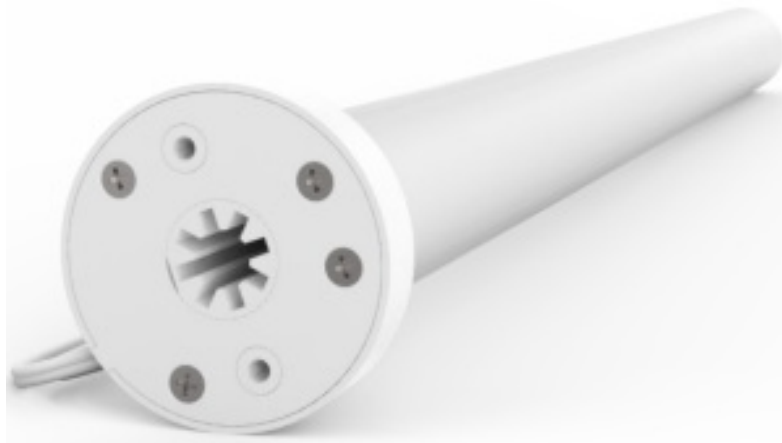


## AUTOMATE WireFree Li-ion Q2.0 User Guide

[Home](#) » [AUTOMATE](#) » AUTOMATE WireFree Li-ion Q2.0 User Guide 

### AUTOMATE WireFree Li-ion Q2.0 User Guide



Rechargeable. Battery-powered. Efficient installation. This wire-free motor's built-in rechargeable lithium-ion battery is perfect for small to medium shade applications.

#### Contents

- [1 Features](#)
- [2 PRODUCT SPECIFICATIONS](#)
- [3 DIMENSIONS](#)
- [4 COMPATIBLE PARTS](#)
- [5 COMPATIBLE SYSTEMS](#)
- [6 COMPATIBLE PRODUCTS](#)
- [7 Warranty](#)
- [8 Documents / Resources](#)
- [9 Related Posts](#)

### Features

#### BI-DIRECTIONAL COMMUNICATION





Automate Radio Communication utilizes two-way communication to provide up-to-date feedback on battery levels and shade positioning via the Automate Pulse 2 app.

## **SIMPLIFIED SETUP**



Whether using a remote control or app for shade setup, Automate programming instructions are streamlined to have your shades moving as quickly as possible.

## **PRECISE LIMIT ADJUSTMENT**



Incremental steps during limit setting allows for precise positioning of the shade.

## **ADJUSTABLE SPEED CONTROL**



Three shade speed settings to suit your needs – faster for larger shades, slower for smaller. Features quiet operation when set to the lowest speed setting.

## **FAVORITE POSITIONING**



Add a programmable shade position in addition to the upper and lower limits that can be defined as your “favorite”.

## **QUIET OPERATION**



Acoustically engineered to insulate sound.



ARC™ (Automate Radio Communication) is Rollease Acmeda's proprietary technology utilizing 433MHz radio communication with bi-directional feedback that brings Automate motorized shading systems together.

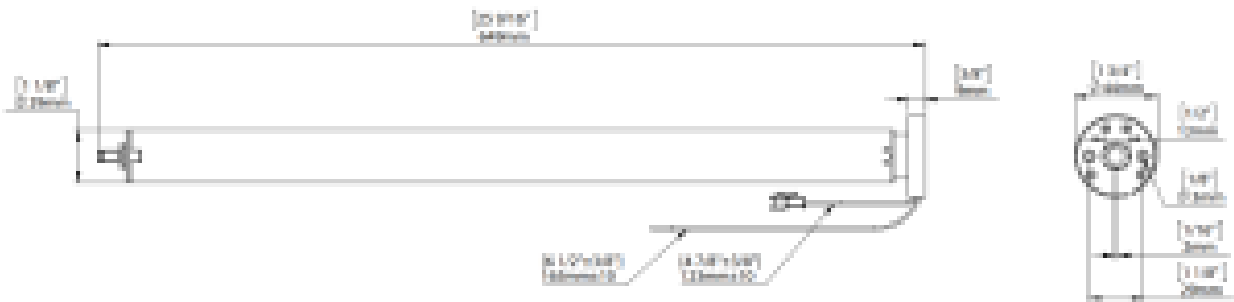
## **PRODUCT SPECIFICATIONS**

**Part #: MTDCBRFQ28-2:** Automate WireFree Li-ion Q2.0



<b>Voltage</b>	12	<b>Limit Switch Type</b>	Electronic
<b>Torque</b>	2Nm	<b>Current</b>	1.16 A
<b>Max Run Time</b>	10 Min	<b>Battery Size/Type</b>	2600mAh
<b>Speed</b>	28 RPM (Adjustable to 24 or 20 )	<b>Temp Working Range</b>	32°F to 140°F (0°C to 60°C)
<b>Radio Frequency</b>	433.92 MHz	<b>Insulation Class</b>	III
<b>RF Modulation</b>	FSK	<b>Sound Level</b>	~44dB
<b>IP Rating</b>	IP44		

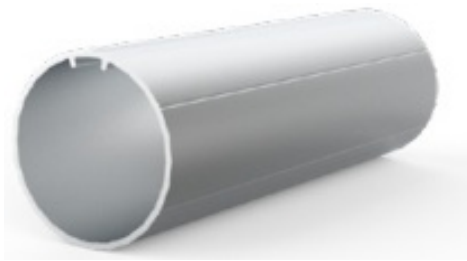
### DIMENSIONS



### COMPATIBLE PARTS

- Tubes





- 1 1/2"
- 2"
- S45 Tube

- **Crown & Drives**



- MTCRDR-28-1.5
- MTCRDR-28-2
- MTCRDR-28-S45

- **Adapters**



- MTAD-25-28-SLV2W
- MTAD-252835-RS
- RB40-1402-069400

## **COMPATIBLE SYSTEMS**

- Skyline Shades
- S45 Shades
- R Series Shades



## COMPATIBLE PRODUCTS

(refer to catalog for full item listings)

### Controllers

- Pulse HUB & App



- Push 5 remotes



- Wall Switch



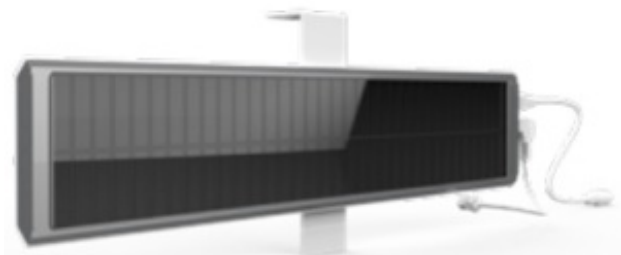
### Charging Options

- 12V Charger





- Solar Pan



## Sensors

- Internal Sun Sensor



## Warranty




MTDCBRFQ28-2\_WireFree Li-ion Q2.0\_v1.7

AUTOMATE™

## Documents / Resources



	<p><a href="#">AUTOMATE AUTOMATE WireFree Li-ion Q2.0</a> [pdf] User Guide</p> <p>AUTOMATE, WireFree, Li-ion, Q2.0</p>
---	--