



# AUTOMATE Rechargeable Battery Pack Instruction Manual

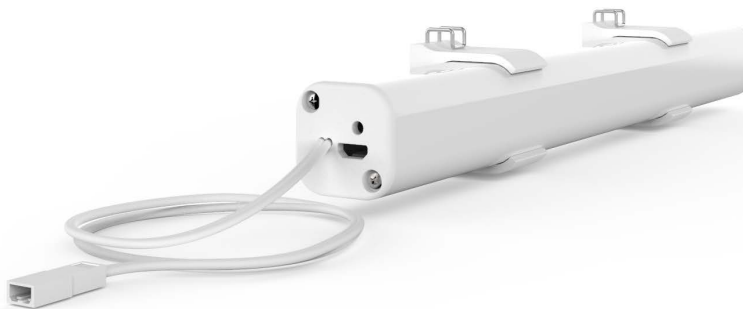
[Home](#) » [AUTOMATE](#) » AUTOMATE Rechargeable Battery Pack Instruction Manual 

## Contents

- [1 AUTOMATE Rechargeable Battery Pack Instruction Manual](#)
- [2 FEATURES:](#)
- [3 SAFETY INSTRUCTIONS](#)
- [4 COMPLIANCE STATEMENT](#)
- [5 INSTALLATION](#)
  - [5.1 Charging](#)
  - [5.2 Attachment Methods](#)
  - [5.3 Motor Connections](#)
- [6 Documents / Resources](#)
- [7 Related Posts](#)

# AUTOMAT

## AUTOMATE Rechargeable Battery Pack Instruction Manual



The rechargeable Lithium-Ion battery pack enables Automate D/C motors to operate wirelessly and without the constraints of traditional battery wands with disposable batteries.

## FEATURES:

- Replacement for Traditional Battery Wands that use disposable batteries
- Provides up to 500 up/down cycles on a single charge(depends on shade size & fabric weight)
- Compatible with Automate Cord Lift, Venetian Tilt, 25 & 28mm tubular DC motors
- Small profile allows for optimal placement in window pocket
- Battery pack fully recharges in ~ 7 hours
- Battery health status reported in Automate Pulse App
- Pairs with optional solar panel for autonomous re-charging

## SAFETY INSTRUCTIONS

**WARNING:** Important safety instructions to be read before installation. Incorrect installation can lead to serious injury and will void manufacturer's liability and warranty.



**WARNING: Important safety instructions to be read before installation and use.**

Incorrect installation or use can lead to serious injury and will void manufacturer's liability and warranty.

It is important for the safety of persons to follow the enclosed instructions. Save these instructions for future reference.

- Do not expose to water, moisture, humid and damp environments or extreme temperatures.
- Persons (including children) with reduced physical, sensory or mental capabilities, or lack of experience and knowledge should not be allowed to use this product.
- Use or modification outside the scope of this instruction manual will void warranty.
- Installation and programming to be performed by a suitably qualified installer.
- Follow installation instructions.
- For use with motorized shading devices.
- Keep away from children.
- Frequently inspect for improper operation. Do not use if repair or adjustment is necessary.
- Keep clear when in operation.
- Replace battery with correctly specified type.

## COMPLIANCE STATEMENT

This device complies with Part 15 of the FCC Rules / Industry Canada licence-exempt RSS standard(s).  
Operation is subject to the following two conditions:

1. this device may not cause harmful interference, and
2. this device must accept any interference received, including interference that may cause undesired operation.

Changes or modifications not expressly approved by the party responsible for compliance could void the user's authority to operate the equipment.

This equipment has been tested and found to comply with the limits for a Class B digital device, pursuant to part 15 of the FCC Rules. These limits are designed to provide reasonable protection against harmful interference in a residential installation.

This equipment generates uses and can radiate radio frequency energy and, if not installed and used in accordance with the instructions, may cause harmful interference to radio communications. However, there is no guarantee that interference will not occur in a particular installation.

If this equipment does cause harmful interference to radio or television reception, which can be determined by turning the equipment off and on, the user is encouraged to try to correct the interference by one or more of the following measures:

- Reorient or relocate the receiving antenna.
- Increase the separation between the equipment and receiver.
- Connect the equipment into an outlet on a circuit different from that to which the receiver is connected.
- Consult the dealer or an experienced radio/TV technician for help.

To satisfy FCC / IC RF exposure requirements, a separation distance of 20 cm or more should be maintained between the antenna of this device and persons during device operation.

To ensure compliance, operations at closer than this distance is not recommended.

## INSTALLATION

### Charging

Charging uses the 2 pin locking "SMR" style connector.

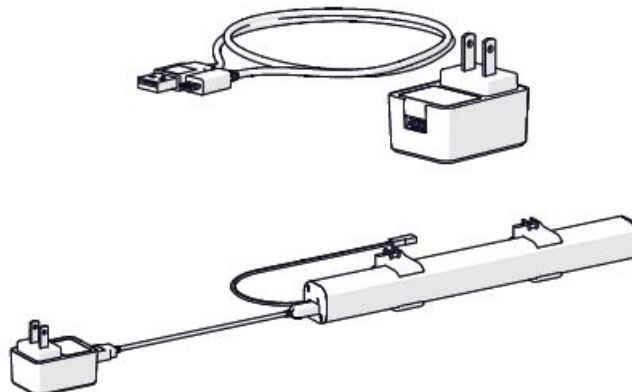
### IMPORTANT

Rechargeable Battery Pack must be fully charged prior to first use to prolong battery lifespan.

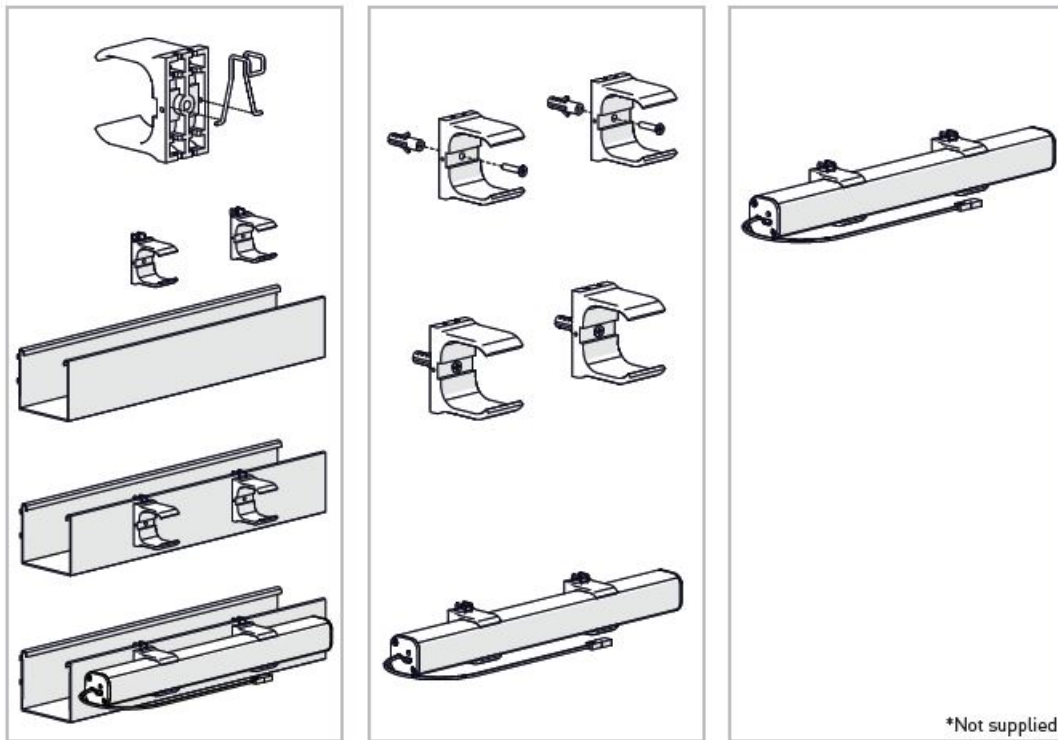
Step 1. Connect the Rechargeable Battery Pack to the Rollease Acmeda charger. MT03-0301-069008 +MT03-0301-069007

Step 2. Charge for 6 hours.

Step 3. Install as required. See Section 1.2 Attachment Methods



### Attachment Methods

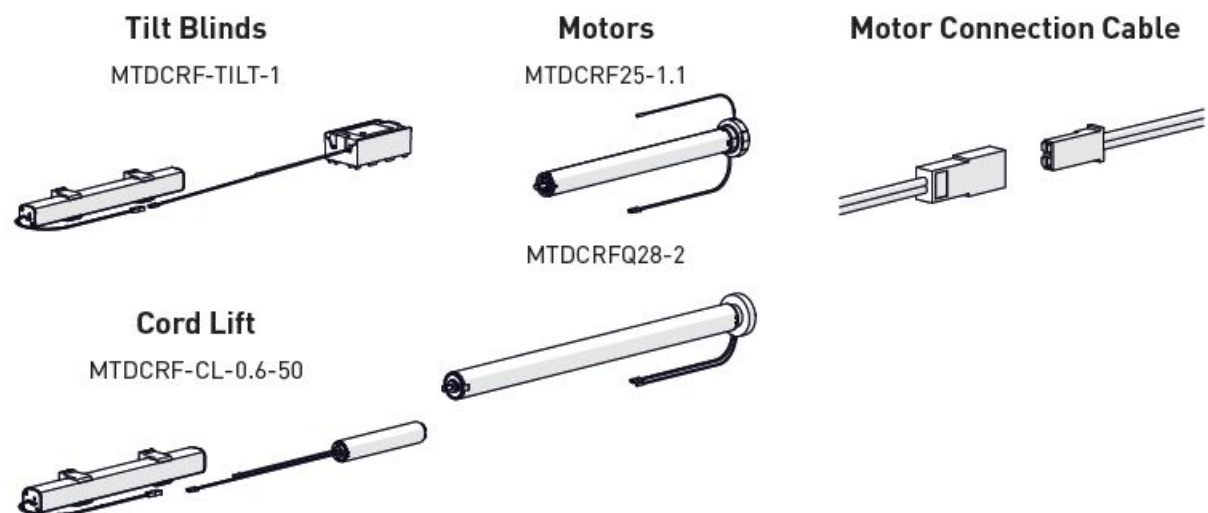


## IMPORTANT

Do not install Rechargeable Battery Pack where it will be exposed to direct sun light.

## Motor Connections

Charging uses the 2 pin, non-locking “JST” style connector.



ROLLEASE ACMEDA | USA  
Level 7 / 750 East Main Street Stamford, CT 06902, USA  
T +1 800 552 5100 | F +1 203 964 0513

## Documents / Resources

