



## AutoFlex KAFXMC-DISPLAY Connect Mini Display Kit Installation Guide

[Home](#) » [AutoFlex](#) » AutoFlex KAFXMC-DISPLAY Connect Mini Display Kit Installation Guide 

### Contents

#### [1 AutoFlex KAFXMC-DISPLAY Connect Mini Display Kit](#)

##### [1.1 Overview](#)

#### [2 Documents / Resources](#)

#### [3 Related Posts](#)



### AutoFlex KAFXMC-DISPLAY Connect Mini Display Kit



This procedure explains how to install Auto Flex Connect Mini display kit model KAFXMC-DISPLAY. Before installing the kit or servicing the control, switch OFF the incoming power at the source. Make sure you label all wires, cables, and modules before disconnecting them.

## Overview

- Create a new database backup
- Shut down Auto Flex Connect
- Verify the database backup
- Remove the old display
- Install the new display controller
- Start Auto Flex and restore from the backup
- Update Auto Flex

## Create a new database backup

### NOTE:

You must create the backup on the new USB drive that DOES NOT have the WARNING label. If your AutoFlex Connect is not functioning, skip to the section Verify the database backup.

1. At the AutoFlex Connect, press the main menu and then Administration.
2. On the Admin Panel, press Diagnostics.
3. Press Eject USB, and then press Yes. Carefully follow the instructions on the screen. If a message displays that it is safe to remove the USB drive, DO NOT press Okay.
4. Remove the four screws fastening the cover in place, and then open the cover.
5. Remove the USB drive that DOES NOT have the WARNING label.



6. On the new display, remove the USB drive that DOES NOT have the WARNING label.
7. Plug the USB drive into the port where you removed the drive from in step 4.
8. On the Diagnostics screen, press Okay.
9. Swipe to the right or left until you see the Backup Database icon.
10. Press Backup Database.
11. Press Yes and then wait for the backup to complete.

## Shut down AutoFlex Connect

1. On the Diagnostics screen, swipe right or left until you see the Shut Down Display icon.

2. Press Shut Down Display.

The control goes through a shutdown process. When the message “It is now safe to turn off the control.” displays, you can go to the next step.

3. Open the cover of the Auto Flex Connect.

4. Switch off or disconnect the power to the control.

5. Wait for the red light on the controller board to go off. This can take from 3 to 5 minutes.



6. If you completed the database backup section, remove the new USB drive that you connected before the backup.

7. Plug the USB drive into the new display controller.

### Verify the database backup

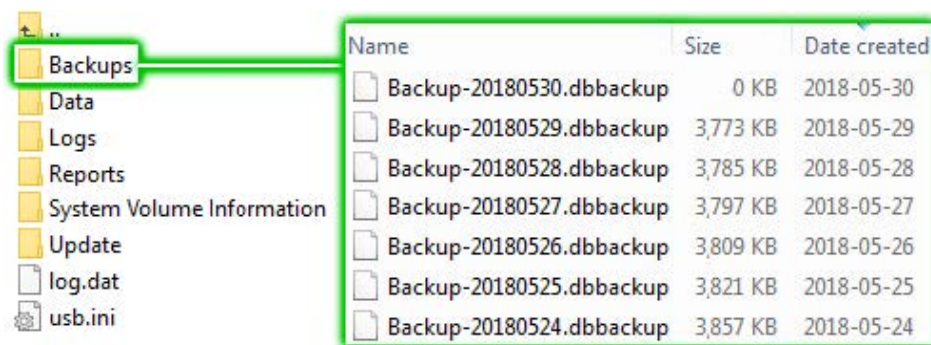
1. Plug the USB drive that has your backup into a USB port on a computer.

2. Find the Backups folder on the USB drive. The folder should have all the backups that have been saved. The file names include the date of the backup.

3. Save a copy of the most recent, valid backup to your computer. The file size must be greater than 0. If you do not have a valid backup, you will need to reprogram the control.

- Right-click the latest backup and then select Copy.
- Right-click the folder on your computer where you would like to save the file and then select Paste.
- A copy of your backup should now be in the folder you selected.

4. Right-click the USB drive and then select Eject.



### File size must be larger, similar to the other ones

5. Unplug the USB drive from your computer.

- If you successfully created a backup in section A, go to section D.
- If you did not create a backup in step A, continue to step 6.

6. Plug the new USB drive into the computer.

7. Find the Backups folder on the USB drive.

8. Locate the backup file that you copied to your computer and then copy it to the new USB drive.

- Right-click the backup file and then select Copy.

- Right-click the Backups folder on the USB drive and then select Paste.
  - A copy of your backup should now be in the folder.
9. Right-click the USB drive and then select Eject.
  10. Unplug the USB drive from your computer.

### **Remove the old display**

1. Make sure the red light in step 5 from the previous section is off.
2. Unplug the ribbon cable connecting the display to the bottom board.
3. Hold onto the display and remove the hinge pin by pulling it upward using a pair of pliers.

### **Install the new display controller and power supply**

1. Lineup the hinges of the display and the bottom of the enclosure and then insert the hinge rod from the top down.
2. Plug the ribbon cable into the connector on the bottom board.
3. Verify all wires and cables are properly connected to their correct locations.

### **Start Auto Flex and restore from the backup**

1. Switch on or connect the power to the Auto Flex.
2. Remove the plastic tab from the power supply. See the power supply note on the last page.
3. When the “ID has changed” message displays, press OK.
4. After Auto Flex has restarted, log in using the sysadmin user with the password 0000.
5. Create a temporary user, called “Temp”, or something similar.
6. Log in as the “Temp” user.
7. Press the main menu and then Administration.
8. On the Admin Panel, press Diagnostics.
9. On the Diagnostics screen, swipe to the right or left until you see the Restore Database icon.
10. Press Restore Database and then press Yes.

**NOTE:** The process takes several seconds to start.

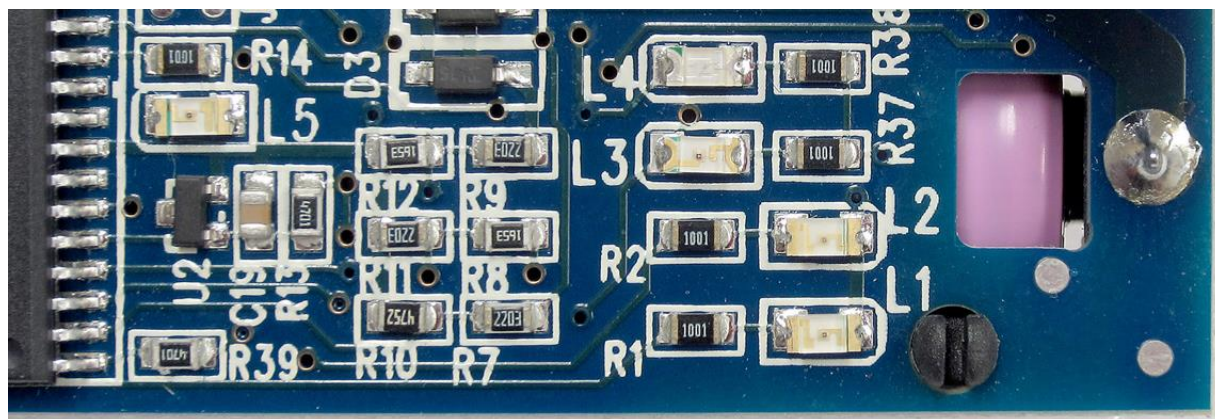
11. Press Select Backup.
12. Select the backup from the list and then press OK.
13. Press Restore Backup.
14. After the backup has been restored, press OK to restart Auto Flex.

### **Update AutoFlex**

1. After AutoFlex has restarted, log in.
2. Press the main menu and then Administration.
3. On the Admin Panel, press Diagnostics.
4. On the Diagnostics screen, press Check Updates and then press Yes.
5. Press Install Updates and then press Yes.

## Important information about the power supply.

After powering up the control, remove the plastic tab (A) from between the battery and contact of the battery holder.

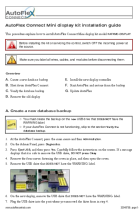


If the control will be powered off for more than 2 days:

1. Shut down the control normally.
2. Wait for L6 (B) to go OFF.
3. Reinsert the tab between the battery and contact. Make sure to insert the tab correctly. L1 and L2 ( will be OFF when it is correctly inserted.

[www.autoflexcontrols.com](http://www.autoflexcontrols.com)

## Documents / Resources

	<p><b><a href="#">AutoFlex KAFXMC-DISPLAY Connect Mini Display Kit</a></b> [pdf] Installation Guide KAFXMC-DISPLAY Connect Mini Display Kit, KAFXMC-DISPLAY, Connect Mini Display Kit, Mini Display Kit, Display Kit</p>
---	--