



# AUTOAUTH X431 PRO3S Plus Elite Bluetooth Bi Directional Scan Tool User Guide

[Home](#) » [AUTOAUTH](#) » AUTOAUTH X431 PRO3S Plus Elite Bluetooth Bi Directional Scan Tool User Guide 

## **AUTOAUTH<sup>®</sup>** **CERTIFIED** **X431 PRO3S Plus Elite Bluetooth Bi Directional Scan Tool** **User Guide**

### Contents

- [1 FCA](#)
- [2 More About AutoAuth](#)
- [3 Documents / Resources](#)
  - [3.1 References](#)

## FCA

### INTRODUCTION OF FCA US SGW

#### What's FCA US SGW?

FCA vehicles (Fiat Chrysler Automobiles) have been protected with an SGW security module (Secure since 2017 Gateway) to prevent unauthorized diagnostics and security attacks.

This module limits diagnostic capabilities without authorized diagnostic tools. This limits functions ranging from Bi-directional testing to DTC clearing. The vehicle's SGW will need to be "unlocked" by the authenticated tester, and the Diagnostic tools.

Now FCA US is using the Automatic Authentication Authority (AutoAuth) to manage user accounts for access to SGW vehicles.

If you are a shop owner, you will first need to register a user account as a technician, then register your shop. (There is an annual \$50 fee per shop).

1. This membership covers up to 6 users (this includes the owner).
2. Each additional user is \$2/year.
3. There is a maximum of 100 users per shop.
4. There is a maximum of 100 scan tools per shop.

**Note:** There are multiple packages on AutoAuth's website, and the shop owner can choose the one that best

suits their needs. The payment is charged by AutoAuth directly. LAUNCH is not involved in any transaction process.

If you are a technician, you can create an account using the AutoAuth software application for free, and then provide your username to the shop you work at, the shop's account owner, and add it to your workplace's membership list. This way, you can use all of the tools registered under your shop's account.

#### **Applicable Area**

The United States, Mexico, and Canada.

Which vehicles equipped with FCA SGW?

<b>Make</b>	<b>Model</b>	<b>Year</b>
Chrysler	300	2018-2022
Chrysler	Pacifica	2018-2022
Dodge	Challenger	2018-2022
Dodge	Charger	2018-2022
Dodge	Durango	2018-2022
Dodge	Journey	2018-2020
Dodge	Ram 1000	2020
Dodge	Ram 1500(DS)	2018-2022
Dodge	Ram 1500(DT)	2019-2022
Dodge	Ram 2500	2018-2022
Dodge	Ram 3500 Cab Chassis	2018-2022
Dodge	Ram 3500 Cab Chassis 10K	2018-2022
Dodge	Ram 3500 Pickup	2018-2022
Dodge	Ram 4500	2018-2022
Dodge	Ram 5500	2018-2022
Dodge	Ram (Mexico)	2018-2022
Dodge	ProMaster City	2018-2022
Jeep	Cherokee	2019-2022
Jeep	Compass (Brazil, China, India, Mexico)	2019-2022
Jeep	Compass (Italy)	2020
Jeep	Gladiator	2020-2022
Jeep	Grand Cherokee (W2, WK)	2018-2020
Jeep	Grand Commander	2018-2020
Jeep	Renegade(B1)	2018-2021
Jeep	Renegade (BQ – China)	2018-2021
Jeep	Renegade (BU)	2018
Jeep	Renegade (BV)	2019-2020

Jeep	Wrangler (JL)	2018-2022
Alfa Romeo	Giulia	2015-2022
Alfa Romeo	Giulietta/Stelvio	2017-2022
Fiat	500X	2018-2022
Fiat	500L	2018-2020
Fiat	500BEV	2021-2022
Fiat	Toro	2021-2022
Fiat	Doblo	2015
Fiat	Ducato	2014-Till now
Fiat	Novo Strada	2021-2022
Fiat	Mobi	2021-2022

**NOTE:** The model coverage list is still being updated. If you have any questions, please feel free to contact us.  
How to Unlock the FCA SGW by LAUNCH Diagnostic Tool?

1. Which TOPON products are certificated with AutoAuth Gateway?

FCA US has

partnered with LAUNCH to certify LAUNCH manufactured diagnostic tools to secure SGW vehicles' access.

Requirements:

Ensure LAUNCH tools have the latest software (valid software subscription required)

Tools need to connect to the Internet Users will enter AutoAuth Credentials when prompted on the tool to unlock SGW vehicles

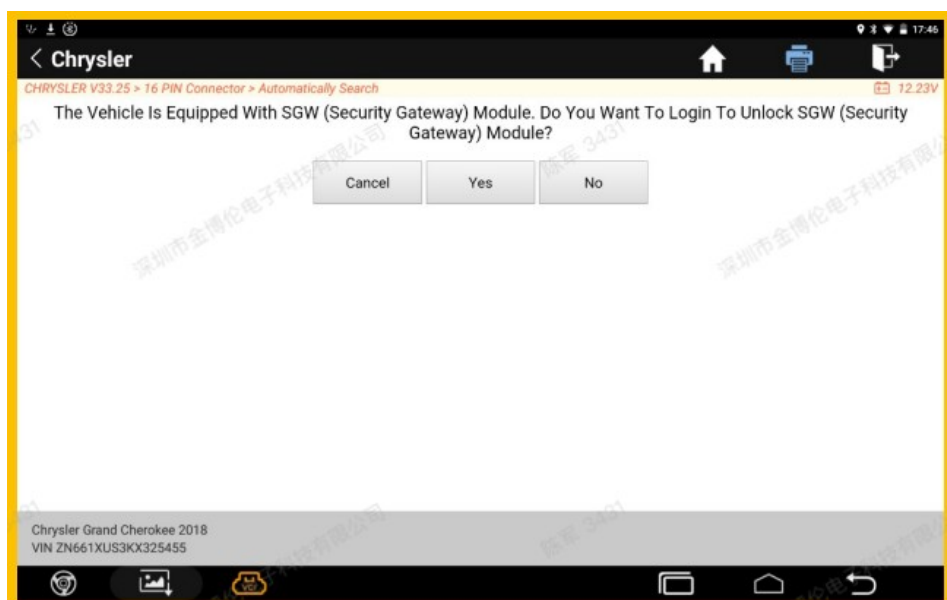
As of August 3, 2022, LAUNCH has 7 devices equipped with the AutoAuth gateway.

Among them are: Phoenix Lite 2, Plus, Elite, Pro, Smart, Remote, Max.

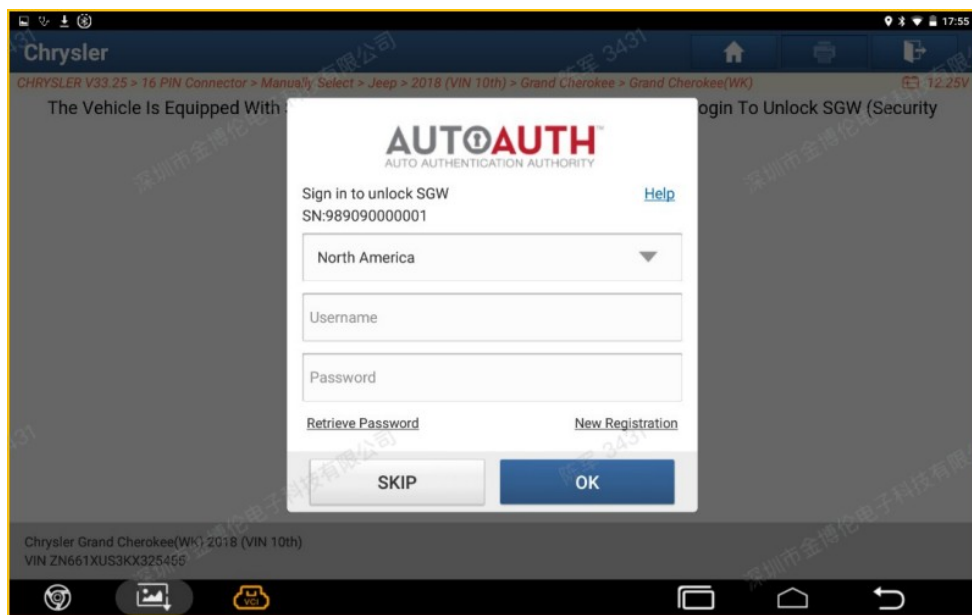
We will also continue configuring the AutoAuth gateway to Unlock FCA SGW in more releases.

2. How to access the AutoAuth on LAUNCH Diagnostic Tool?

**Step 1:** When you diagnose FCA models, the following prompt will pop up, please click Yes.



**Step 2:** Log in to your AutoAuth account to unlock it.



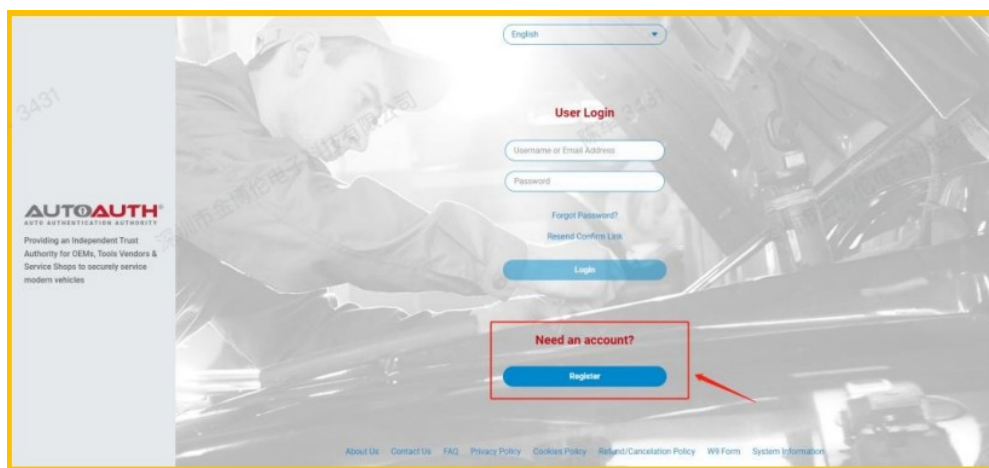
**NOTE:**

\*The actual display of diagnostic tools shall prevail

\*Once you log into AutoAuth on your TOPDOD tools, your Approved Credentials will be Auto Stored in the Software

3. How to register AutoAuth account?

1) Goto <https://webapp.autoauth.com/>



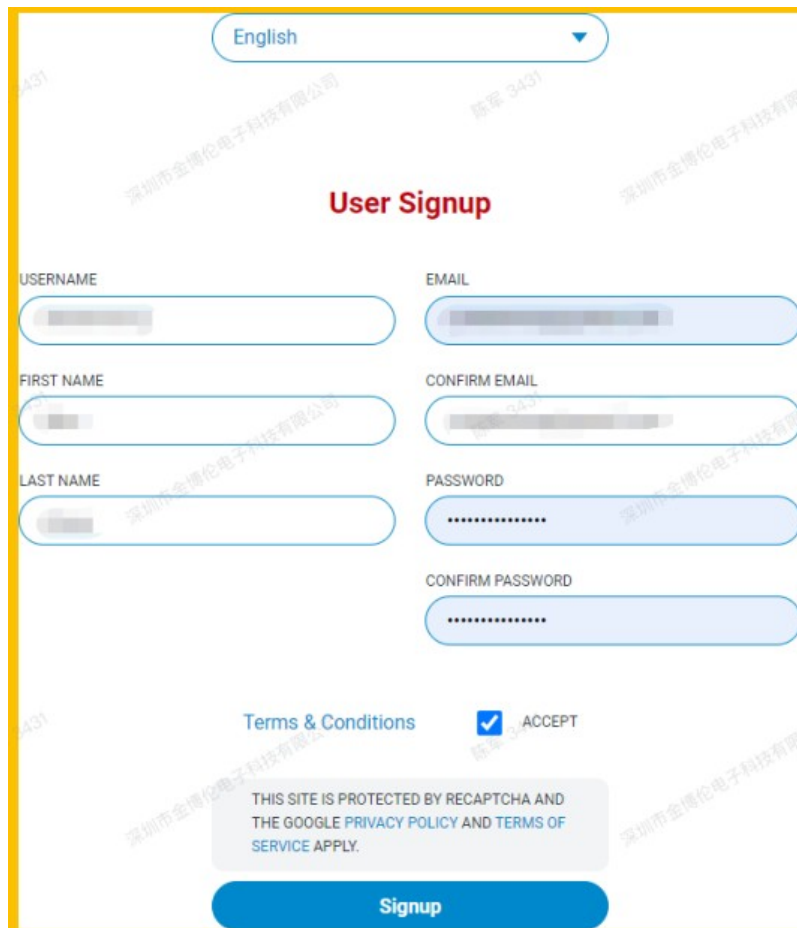
2 Click REGISTER

3 Setup AutoAuth User Account

– There is no payment until a user registers a service center (shop or technician).

You will need to create a unique username. The username must be at least 8 alphanumeric characters starting with a letter. Usernames are lowercase. Once you decide on a username you will enter the other fields including:

- First name
- Last name
- Email address
- Password
- Password confirmation



English

## User Signup

USERNAME

EMAIL

FIRST NAME

CONFIRM EMAIL

LAST NAME

PASSWORD

CONFIRM PASSWORD

[Terms & Conditions](#) ☒ ACCEPT

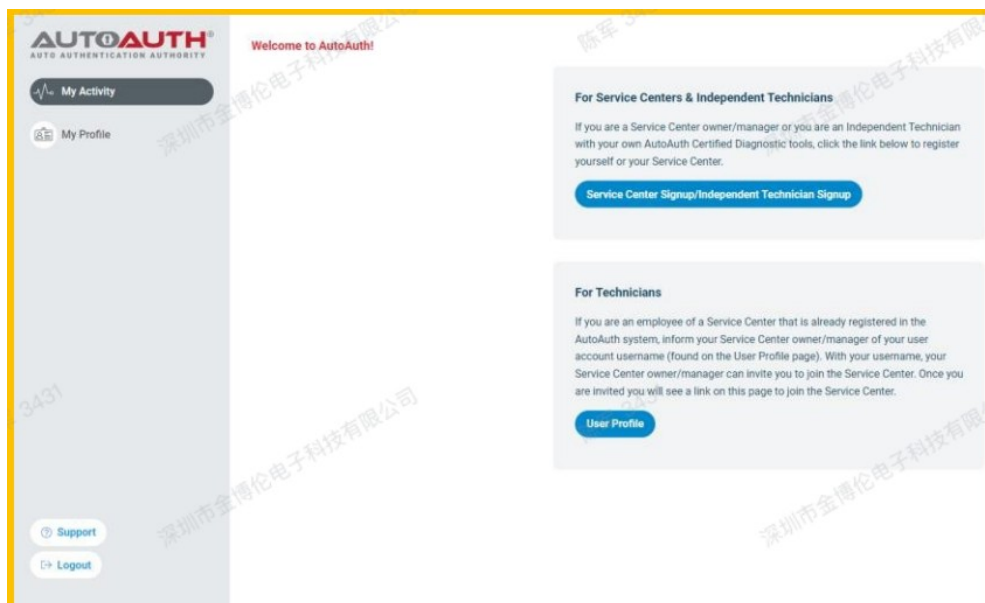
THIS SITE IS PROTECTED BY RECAPTCHA AND THE GOOGLE [PRIVACY POLICY](#) AND [TERMS OF SERVICE](#) APPLY.

**Signup**

Once you accept the terms and conditions, click the “Signup” button. This will create your account and AutoAuth will send you an email to confirm your email address. You are required to click the link sent in email to confirm your email address. Once this is done, you can then log in to the AutoAuth portal to manage your account at the AutoAuth home page.

<https://webapp.autoauth.com>

4 To pay for service, first log in to your account. You will see a welcome to AutoAuth message. Click “Service Center Signup/Independent Technician Signup”



**AUTOAUTH**  
AUTO AUTHENTICATION AUTHORITY

Welcome to AutoAuth!

[My Activity](#)

[My Profile](#)

[Support](#)

[Logout](#)

**For Service Centers & Independent Technicians**

If you are a Service Center owner/manager or you are an Independent Technician with your own AutoAuth Certified Diagnostic tools, click the link below to register yourself or your Service Center.

**Service Center Signup/Independent Technician Signup**

**For Technicians**

If you are an employee of a Service Center that is already registered in the AutoAuth system, inform your Service Center owner/manager of your user account username (found on the User Profile page). With your username, your Service Center owner/manager can invite you to join the Service Center. Once you are invited you will see a link on this page to join the Service Center.

**User Profile**

You'll be taken to the Service Center registration form.

**Service Center or Independent Technician Signup**

**AUTOAUTH**  
AUTO AUTHENTICATION AUTHORITY  
Providing an Independent Trust Authority for OEMs, Tools Vendors & Service Shops to securely service modern vehicles

Service Center Name

Primary Contact  
Enter AutoAuth User Credentials

Username or Email Address

Password

Need an Account?

ADDRESS LINE 1:  
Address Line 1

ADDRESS LINE 2:  
Address Line 2

CITY:  
City

STATE: ZIP:  
State zip

COUNTRY:  
Country

PHONE NUMBER:  
Phone Number

CURRENT PLAN  
AutoAuth Standard  
REGISTRATION FEE  
\$50/Year

Pay with card

Card Number  
\*\*\*\* \* \* \* \*

Expiration Date (MM/YY)  
MM/YY

CVV (3 digits)  
\*\*\*

Postal Code

Terms & Conditions ☐ ACCEPT

Signup

Enter a name for your shop. (This can be changed later.) Enter your username. (This cannot be changed later.)

Enter your password.

Enter your Address, city, state, postal code, and country.

Enter your phone number.

Enter your credit card number.

Enter your expiration date of your card. Enter the CVV number of your card.

After reading the terms and conditions, check the box that you agree to them.

Check the box at the bottom to confirm you are not a robot. Click the “Signup” button at the bottom of the page.

**NOTE:** The payment charge by AutoAuth directly, LAUNCH is not involved in any transaction process.

You will now have “Manage Tools” and “Manage Users” available in your menu at the left of the page as shown below:

**AUTOAUTH**  
STANDARD

My Activity

Manage Tools

Manage Users

View Reports

SpeedyRepairCo

alexsmith76

Compare Plans

Welcome to AutoAuth!

Shop: SpeedyRepairCo My Role: OWNER My Status: ACTIVE

Get Started to register tools for your shop so you can start servicing vehicles.

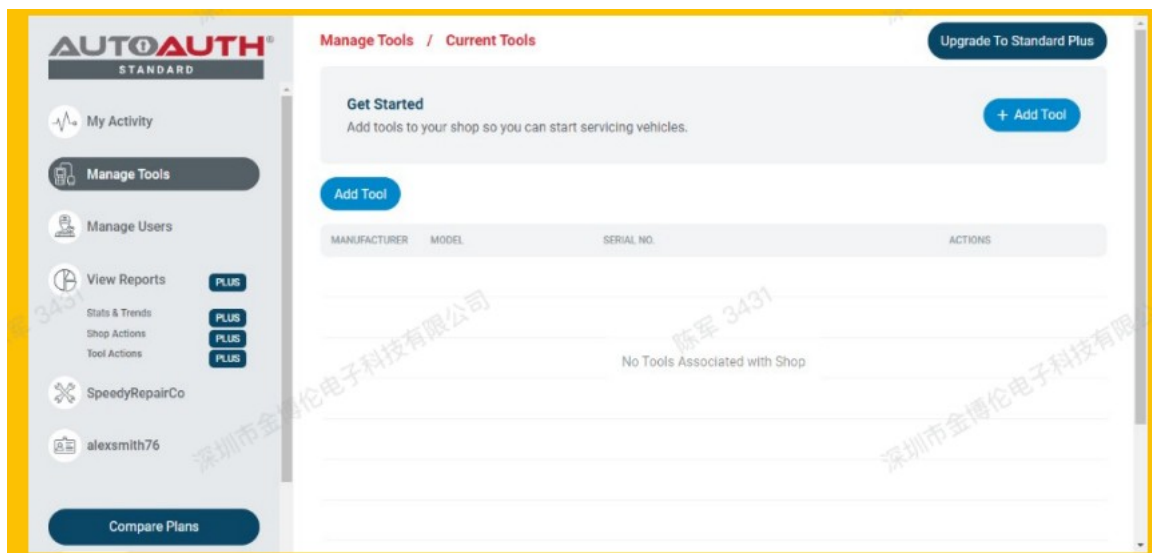
+ Add User + Add Tools

Upgrade To Standard Plus  
Standard Plus will give you, the Owner, a log of all your past shop actions.

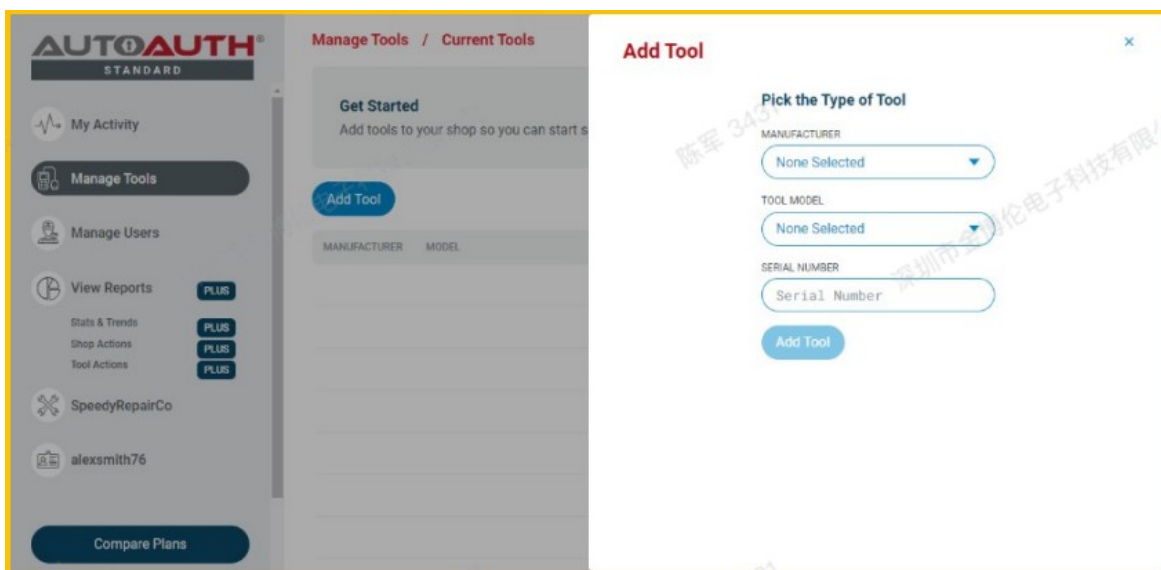
Upgrade Now

The next step is to register your tool serial numbers.

5 After logging in as the shop owner, select “Manage Tools” from the left menu



Click the + Add Tool button.

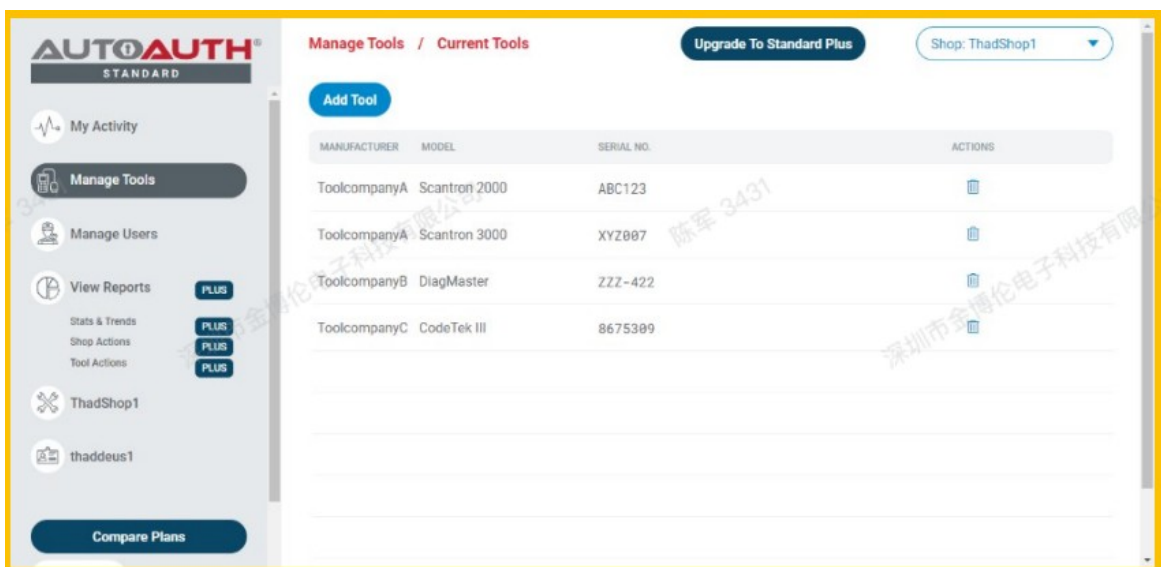


Select the manufacturer of LAUNCH.

Select the model of your tool (All LAUNCH products select Others).

Enter the serial number for your tool.

Click the “Add Tool” button. You may now see the LAUNCH diagnostic tool in your list.



Note that a LAUNCH tool serial registered to a shop can be used by all registered shop users. However, a tool serial cannot be used by more than one shop.

After your LAUNCH tools are added to your shop account, they are authorized by AutoAuth to unlock the

secure gateway on vehicles. There is no delay after registering your serial numbers.

## More About AutoAuth

AutoAuth is an independently owned and operated service working in conjunction with Auto OEMs and independent Tool Vendors.

AutoAuth provides a service for Independent Operators to unlock vehicles to securely provide service to their customers. New vehicles will come enabled with the latest cyber security features to protect vehicle owners from cyber attack. AutoAuth works with independent Tool Vendors to ensure the tools independent operators use to do their jobs are AutoAuth certified tools. This will allow Independent Operators to continue to service cyber enabled vehicles.

AutoAuth provides the registration service and “unlock codes” to Independent Operator’s service tools to unlock vehicle gateways to perform day to day service.

To get to the AutoAuth WEB Portal please visit: <https://webapp.autoauth.com>



---

## Documents / Resources

	<a href="#">AUTOAUTH X431 PRO3S Plus Elite Bluetooth Bi Directional Scan Tool</a> [pdf] User Guide X431 PRO3S Plus, X431 PRO3S Plus Elite Bluetooth Bi Directional Scan Tool, Elite Bluetooth Bi Directional Scan Tool, Bluetooth Bi Directional Scan Tool, Bi Directional Scan Tool, Scan Tool, Tool
--	---

## References

- [🔒 AutoAuth](#)
- [🔒 AutoAuth](#)
- [User Manual](#)