



# Auto-San AE106-APP AS 7.0 Battery Bluetooth Diffuser Instruction Manual

[Home](#) » [Auto-San](#) » Auto-San AE106-APP AS 7.0 Battery Bluetooth Diffuser Instruction Manual 

## Contents

- [1 Auto-San AE106-APP AS 7.0 Battery Bluetooth Diffuser](#)
- [2 Product Information](#)
- [3 Product Usage Instructions](#)
- [4 Specification](#)
- [5 Installation](#)
- [6 Amend password](#)
- [7 Reminding](#)
- [8 Concentration and Consumption](#)
- [9 Troubleshooting](#)
- [10 Documents / Resources](#)
  - [10.1 References](#)



**Auto-San AE106-APP AS 7.0 Battery Bluetooth Diffuser**



## Product Information

- **Name:** AAA
- **Label:** AAAAAA
- **Model:** AE106-APP
- **Bluetooth Indicator:**
  - Catch the signal – Flash
  - Connected – Light on
  - Disconnected – Light off
- **Dimensions:** 159.5\*77.5\*239mm
- **Capacity:** 480ml
- **Weight:** 813g
- **Coverage Area:** 150m3
- **Power Source:** Battery (4\*1.5V) or USB (5V)
- **Additional Features:** USB port, Hanging hole, Bluetooth indicator, Power mode, Battery mode, Reset button, Level detector reset button, Diffuser head, Key, Bottle

## Product Usage Instructions

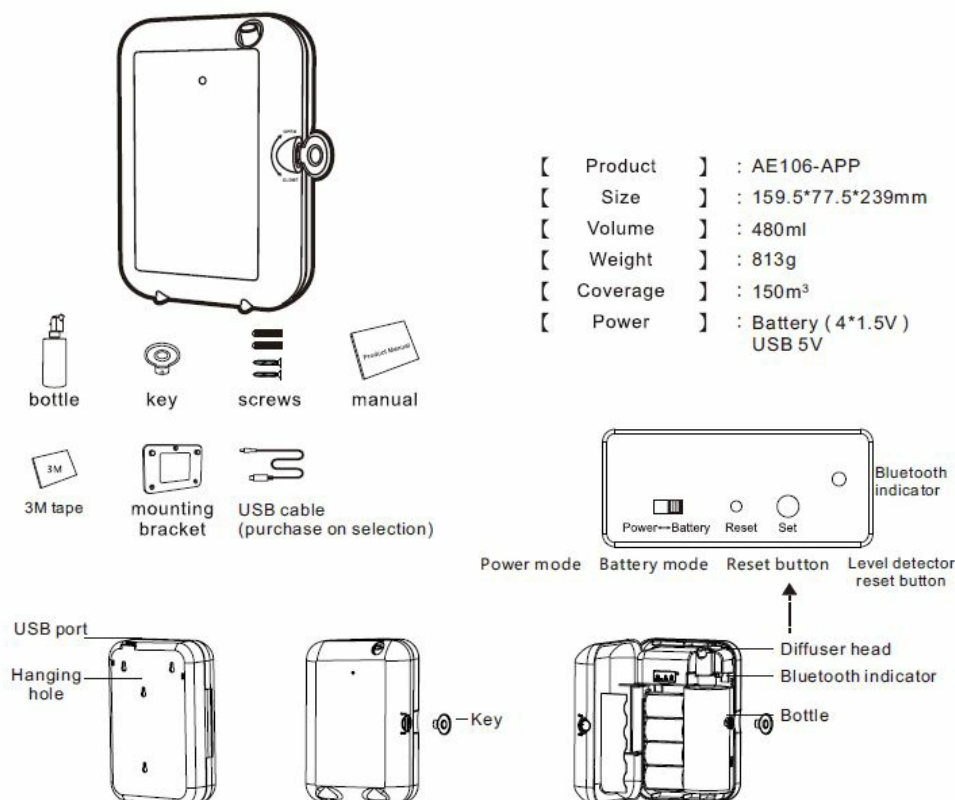
1. To get the app for the product, please search “scent marketing” in Google Play or App Store and download it.
2. If the machine is being used for the first time or hasn't been used for more than 7 days, the controlling board may be out of power. Insert the batteries or plug in the device and wait for 1-2 minutes to allow it to power on automatically.
3. To fill the bottle with fragrance, pour industrial alcohol into the bottle, filling it up to about 15%. This will enable the machine to diffuse the fragrance 5-10 times.
4. To turn on the machine, open the device by following the “OPEN” instructions. Choose the desired power mode (Power mode or Battery mode) and either plug in the device or insert the battery. For the first time connecting with power, please wait for about 12 minutes to let the machine charge.
  - Fix the 3 screws provided to the wall.
  - Hang the machine on the fixing screws. To secure the machine to the wall, follow these steps:

**Note:** If you prefer using 3M tape instead of screws, press the 3M tape against the wall for 1 minute before hanging the machine on it.

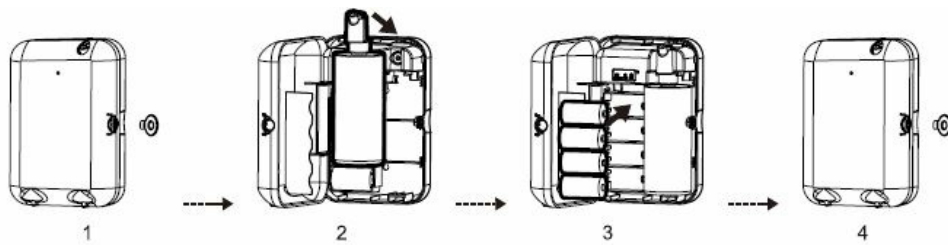
5. If you encounter any issues with the product, refer to the following breakdown and solution guide:

- **Breakdown:** Does not diffuse
- **Solution:** Check whether the mode you choose is correct or not. Check if the machine is during Non-Working period. The air pump may be damaged, consider changing it. Check whether the tube is loose or not.
- **Breakdown:** Low diffuse
- **Solution:** The atomizing core may be blocked, clean it using alcohol or replace it with a new component. Check whether the gasket is damaged/loose or not. Check whether the tube is loose or not.
- **Breakdown:** Oil spill
- **Solution:** Check whether the bottle is loose or not. The gasket in the atomized head may be damaged or loose.
- **Breakdown:** Oil sprinkle
- **Solution:** The atomized head may be damaged, consider changing it. Ensure the machine is kept vertical and not tilted or lying down.
- **Breakdown:** Abnormal noise
- **Solution:** Retighten the air pump if it is loose. If the air pump is damaged, consider replacing it.

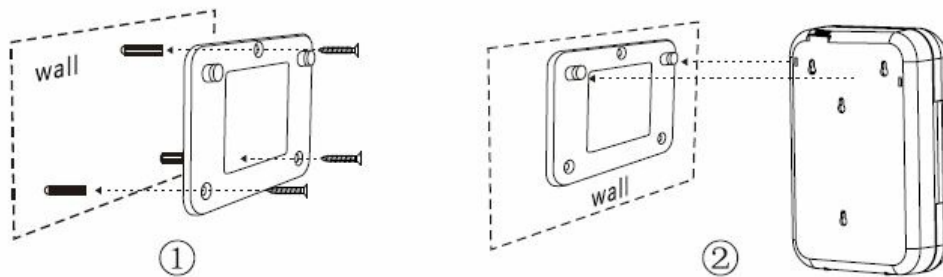
## Specification



## Installation



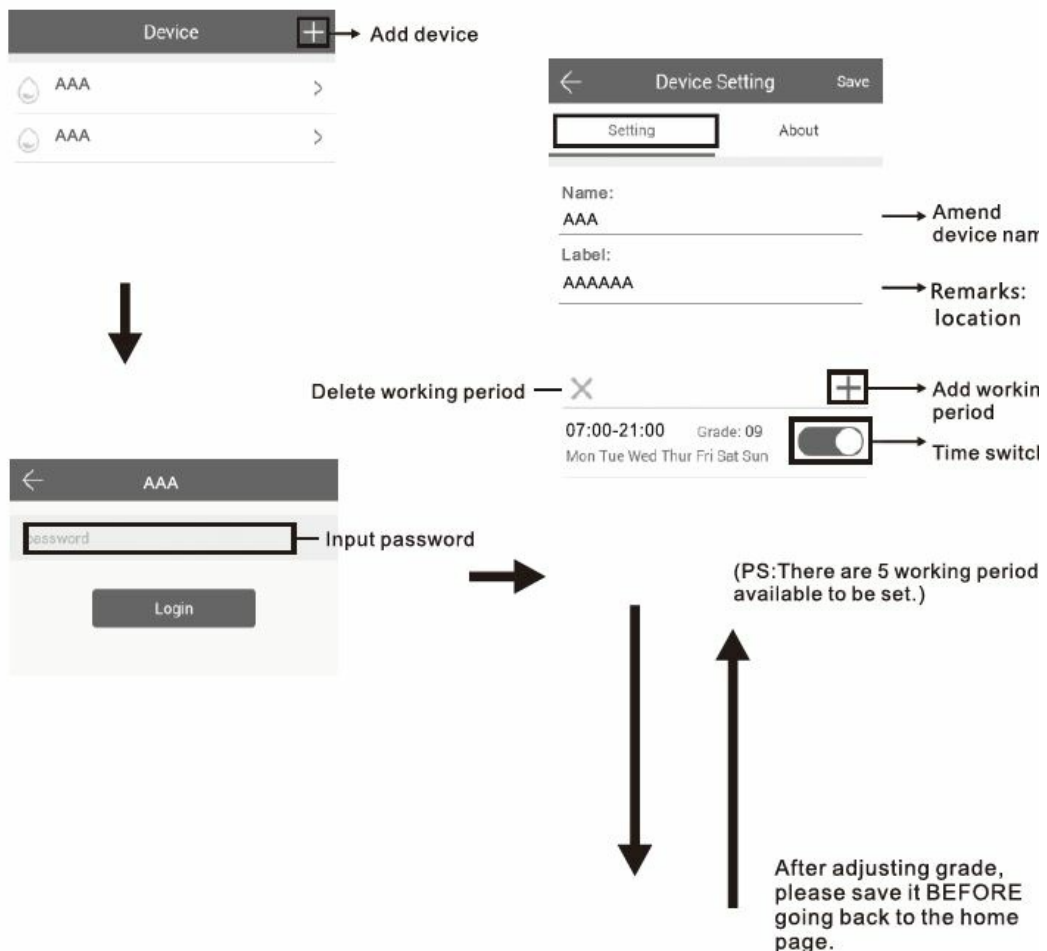
1. Insert the key and the mating part, twirl to "OPEN" and then pull them out. Press the fixed button on the top and push forward.
2. Tightly connect the atomizer head and the fragrance bottle, and install them to the machine.



3. Choose "Power mode" or "Battery mode", plug in or insert the battery. Please wait about 12 minutes to let machine charged on the first time connect with power.)
4. Insert the key to the mating parts, then insert them to the keyhole, twirl to "CLOSE" for locking.

### Where to get the app

Please search "scent marketing" in Google play or App store and you will find it.



## Amend password

← Device control

Set About

PCB Version: AAAA

Equipment version: AAAA

APP version: AAAA

Change password

↓

← Change password

The new password

Confirm password

Change password

← Working period setting Save

Start working time Stop working time

04

05 00

06 : 00 00 : 01 → Slide up and down to adjust

07 01 01 02

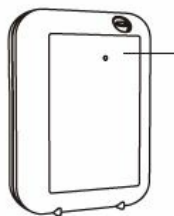
08 02 02 03

Repeat Mon Tue Wed Thur Fri Sat Sun → Select the day

Concentration grade 6 → Select grade

If you forget the password, please press the reset button to restore the factory settings. The factory settings password is 8888.

## Reminding



Bluetooth indicator:  
Catch the signal - Flash  
Connected - Light on  
Disconnected - Light off

## Concentration and Consumption

Grade	G1	G2	G3	G4	G5
Intervals ( min )	15	13.5	12	10.5	9

Grade	G6	G7	G8	G9	G10
Intervals ( min )	7.5	6	4.5	3	1.5

## Notes

1. 480ml oils can diffuse 31000-33000 times under normal circumstances.
2. All of the above grade atomization work time is 5 seconds.
3. Different grade and oil may with different consumption.

### Fix the 3 screws to the wall

Hang the machine on the xing screw

**Warning:** If you use 3M instead of screw to the wall, please press 3M on the wall 1 minute and then hang machine

on

## Warning



1. Please keep the machine vertical. Tilt or lie flatly may cause oil overflow. The machine efficiency may be affected.
2. Shall not modify, disassemble or repair the machine . If any failure happens to the machine, please contact our technical personnel.
3. When the machine is first used or hasn't been used for more than 7 days, the controlling board is out of power. Please insert the batteries/plug in and wait for 1-2 minutes, the machine will be back on automatically.

## Equipment cleaning

The machine needs to be cleaned when below situations happen:

1. You're about to change to another kind of essential oil.
2. The atomization volume becomes weak .

## Cleaning steps

1. Pull out the atomized head, loose the bottle.
2. Refill industrial alcohol into bottle about 15%, make it diffuse 5-10 times.
3. Airing the atomized head and the bottle.

## Troubleshooting

Before asking to have the machine repaired, please try to diagnose the problem first following to bellow instructions.

Breakdown	Solution
Does not diffuse	<ul style="list-style-type: none"> <li>-Check whether the mode you choose is correct or not.</li> <li>-Check if the machine is during "Non-Working period"</li> <li>-Air pump may be damaged, change a new one.</li> <li>-Check whether the tube is loose or not</li> </ul>
Low diffuse	<ul style="list-style-type: none"> <li>-The atomizing core is blocked, clean by alcohol or change a new component.</li> <li>-Check whether the gasket is damage/loose or not.</li> <li>-Check whether the tube is loose or not</li> </ul>
Oil spill	<ul style="list-style-type: none"> <li>-Check whether the bottle is loose or not</li> <li>-The gasket in the atomized head is damaged or loose.</li> </ul>
Oil sprinkle	<ul style="list-style-type: none"> <li>-The atomized head is damaged, change a new one</li> <li>-The machine is tilted or lie down, keep the machine vertical.</li> </ul>
Abnormal noise	<ul style="list-style-type: none"> <li>-The air pump is loose, retighten the pump</li> <li>-The air pump is damaged, change a new one.</li> </ul>

## Documents / Resources



[Auto-San AE106-APP AS 7.0 Battery Bluetooth Diffuser](#) [pdf] Instruction Manual  
 AE106-APP AS 7.0 Battery Bluetooth Diffuser, AE106-APP, AS 7.0 Battery Bluetooth Diffuser, B  
 attery Bluetooth Diffuser, Bluetooth Diffuser, Diffuser

## References

- [User Manual](#)