

Auto Dynasty C-3069 Side Step Nerf Bar Running Boards



Auto Dynasty C-3069 Side Step Nerf Bar Running Boards Installation Guide

[Home](#) » [Auto Dynasty](#) » Auto Dynasty C-3069 Side Step Nerf Bar Running Boards Installation Guide 

Contents

- [1 Auto Dynasty C-3069 Side Step Nerf Bar Running Boards](#)
- [2 Specifications](#)
- [3 Part List](#)
- [4 FAQ](#)
- [5 Documents / Resources](#)
 - [5.1 References](#)
- [6 Related Posts](#)

Auto Dynasty

Auto Dynasty C-3069 Side Step Nerf Bar Running Boards



Installation & CARE

Specifications

Model Number	C-3069
--------------	--------

Tools Required

- 13mm Socket
- Ratchet
- Torque Wrench

Notes

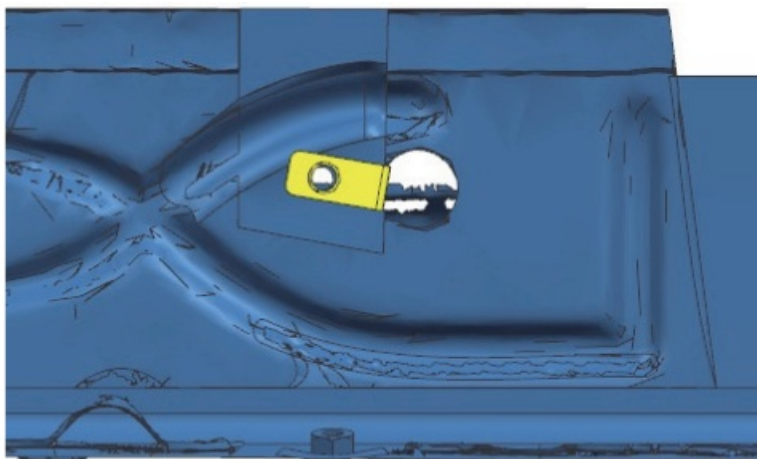
Read this instruction carefully before starting installation. Does NOT compatible with diesel engine vehicle. Proper tools will improve the quality of installation and reduce the time required. If missing parts or any damage found, please take a picture, and contact us.

Step 1:

1. Locate (4) mounting positions each side.
2. There are 5 mounting positions each side, we will use the 1st, 2nd, 4th, 5th.
3. Clean the sealant and dirt around mounting positions.

Step 2:

1. Remove rubber plugs on mounting positions.
2. Insert M8 clip nuts onto existing holes on inner rocker panel. (Insert M8 clip nut onto the large hole and over the smaller hole next to it.)

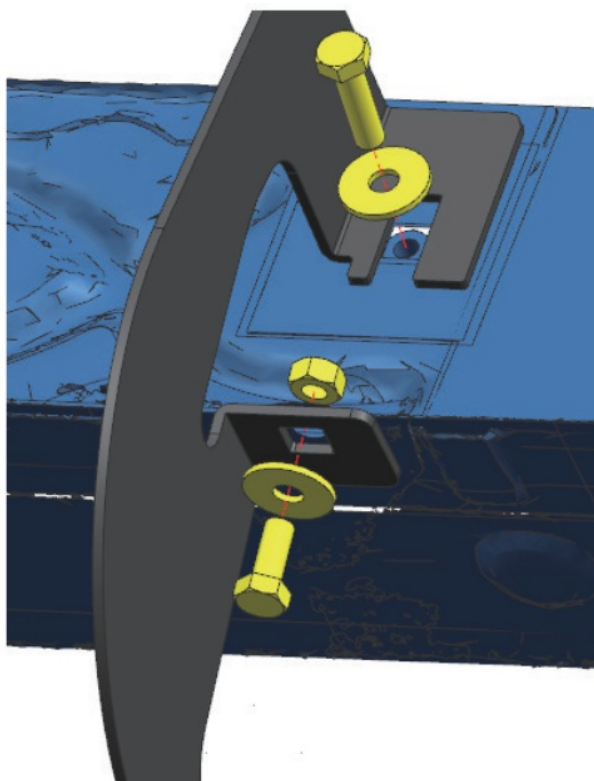


Note: If your vehicle equipped factory threaded inserts on rocker panel, skip to next step.

Secure the bracket to pinch weld with (1) M8 hex bolt, (1) M8 flat washer, (1) M8 hex nut.

Step 3:

1. Attach bracket to inner rocker panel.
2. Secure the bracket to inner rocker panel with (1) M8 hex bolt, (1) M8 flat washer.
3. Secure the bracket to pinch weld with (1) M8 hex bolt, (1) M8 flat washer, (1) M8 hex nut.
4. Repeat to install other brackets, do not fully tighten.

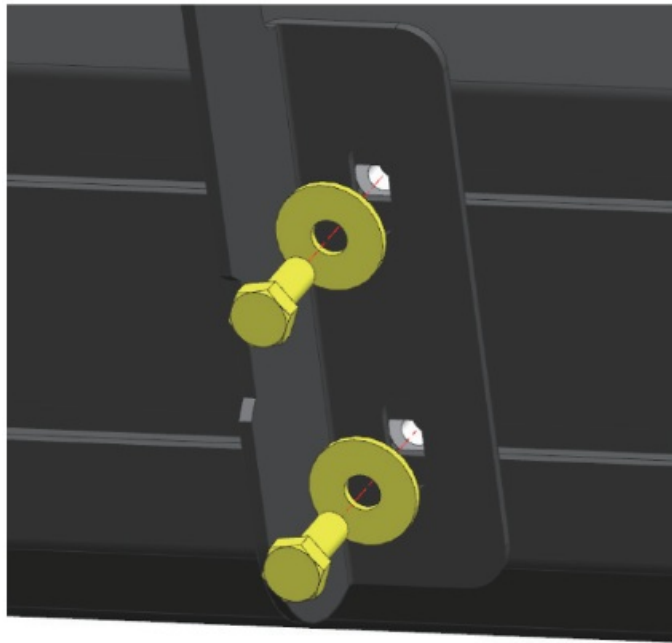


Note: Use the factory nut directly, if your vehicle equipped factory weld nut on pinch weld.

Some models may partially equipped factory thread inserts on inner rocker panel and welded nuts on pinch weld, depending on vehicle's model year and trim level.

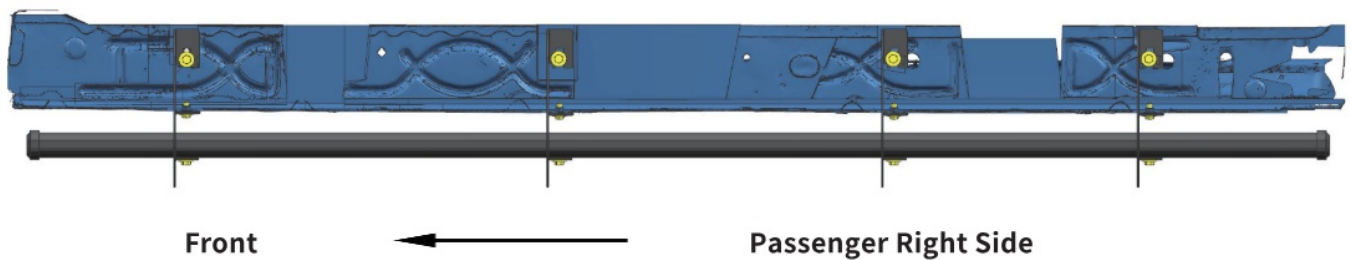
Step 4:

1. Remove (8) M8 hex bolts and (8) M8 flat washers from the back of step bar.
2. Slide mounting tracks to proper positions.
3. With assistance, lift and attach the step bar to brackets. Secure the step bar on brackets with (8) M8 hex bolts and (8) M8 flat washers.
4. Repeat to install the other side step bar, do not fully tighten.



Step 5:


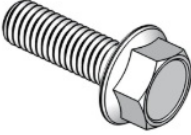



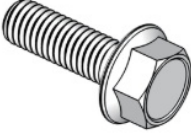

1. Tighten M8 hex bolts and nuts on vehicle with 15 ft. lbs. torque.
2. Adjust the step bar to level and tighten M8 hex bolts with 15 ft. lbs. torque.
3. After the step bar installed, periodic check to ensure all mounting hardware remains secure and tight.



Front – Passenger Right Side

Part List

Part	Quantity
Bracket	8
M8 Hexagon Bolt	16
M8 Flat Washer	32
M8 Hexagon Nut	8
M8 Hexagon Bolt (on step bar)	16
M8 Flat Washer (on step bar)	16
M8 Clip Nut	8

							
Bracket	×8	M8 Hexagon Bolt	×16	M8 Flat Washer	×16	M8 Clip Nut	×8
							
M8 Hexagon Nut	×8	M8 Hexagon Bolt (on step bar)	×16	M8 Flat Washer (on step bar)	×16		

FAQ

What if my vehicle has factory-threaded inserts on the rocker panel?

If your vehicle has factory-threaded inserts on the rocker panel, you can skip the step of inserting M8 clip nuts and move on to the next step.

Is this installation compatible with diesel engine vehicles?

No, this installation is not compatible with diesel-engine vehicles.

What should I do if I find missing parts or damage before installation?

If you find any missing parts or damage, take a picture and contact the manufacturer or supplier for assistance.


How often should I check the mounting hardware after installation?

It is recommended to periodically check to ensure all mounting hardware remains secure and tight after the step bar is installed.

It is recommended to periodically check to ensure all mounting hardware remains secure and tight after the step bar is installed.

The M8 hex bolts and nuts should be tightened with 15 ft. lbs. of torque

Documents / Resources

	<p>Auto Dynasty C-3069 Side Step Nerf Bar Running Boards [pdf] Installation Guide CV-W059 1, C-3069 Side Step Nerf Bar Running Boards, C-3069, Side Step Nerf Bar Running Boards, Step Nerf Bar Running Boards, Nerf Bar Running Boards, Bar Running Boards, Running Boards, Boards</p>
---	---

References

- [User Manual](#)

[Manuals+](#), [Privacy Policy](#)

This website is an independent publication and is neither affiliated with nor endorsed by any of the trademark owners. The "Bluetooth®" word mark and logos are registered trademarks owned by Bluetooth SIG, Inc. The "Wi-Fi®" word mark and logos are registered trademarks owned by the Wi-Fi Alliance. Any use of these marks on this website does not imply any affiliation with or endorsement.