



# Auto Backup Adapter 128GB Auto Photo Backup Cube User Manual

[Home](#) » [Auto Backup Adapter](#) » Auto Backup Adapter 128GB Auto Photo Backup Cube User Manual 

## Contents

- [1 Auto Backup Adapter 128GB Auto Photo Backup Cube](#)
- [2 Product Information](#)
- [3 Product Usage Instructions](#)
- [4 How to View and Operate backup files from external storage](#)
- [5 View Backup Content](#)
- [6 Recover/Restore mobile phone](#)
- [7 Warranty & Contact US](#)
- [8 Documents / Resources](#)
  - [8.1 References](#)
- [9 Related Posts](#)

## Auto Backup Adapter

### Auto Backup Adapter 128GB Auto Photo Backup Cube



## Product Information

### Specifications

- iOS Mobile Phones Supports: iOS 10.0/11.0/12.0/13.0/14.0/15.0/16.0 and later
- Android Mobile Phones Supports: 6.0/7.0/7.1/8.0/8.1/9.0/10.0/11.0/12 and later

### Foreword

Please carefully read this User Manual, which will help you to use the this backup Adapter more easily. If you have any questions, please contact our customer support via: Email: [csplzmpwlq@gmail.com](mailto:csplzmpwlq@gmail.com)

### Thanks for choosing this Auto Backup Adapter

You can Auto Backup your photos, videos, etc. for iPhone/iPad or Android mobile phones while charging it. It is the easiest autobackup device without any extra operation.

### Accessories Included

The product includes the following accessories:

- Backup Adapter \*1
- TF card \*1 (capacity follows purchase)
- User Manual \*1
- Warranty Card \*1

\*The Power Adapter/USB Flash Drive/USB Cable mentioned in this User Manual is not included.\*

### Connection Sequence

#### Product Connection Sequence:

1. Insert TF card or USB flash drive
2. Connect with Power Supply
3. Connect with mobile phone

### **Name and Function of Each Part**

- TF card slot: insert TF Card (contained).
- USB-A interface: connect to USB ports of computer or Power adapter.
- LED: LED light will light up when working.
- Port for smartphone connection (Red) – Dedicated to connect with mobile phones.
- Port for USB memory (black) – Dedicated for USB flash drive.

### **Dedicated App**

This Backup Adapter needs to work with the dedicated APP. Just run the iStore Pro App on your mobile phones without Internet or WiFi. No need to visit any Server or Cloud. It is absolutely safe & reliable without giving any personal information out.

### **Backup Storage**

This Backup Adapter comes with TF card. All the data you back up would be saved in this TF card by default (if no extra USB memory inserted). The Maximum capacity of TF card supports up to 512GB. When you insert the USB-A port into computer, it works as a normal TF card reader, allowing you to transfer the backup data between this Backup Adapter and the computer directly. This Backup Adapter also supports USB flash drive (The Maximum capacity supported up to 512GB) or hard drive at the same time. If both TF card and USB flash drive are inserted in this Backup Adapter, you can set the backup path from the Settings.

### **Product Usage Instructions**

#### **Warm Tips**

1. Do connect the Backup Adapter to power supply first, then it will automatically back up your mobile phone while charging.
2. Please do not remove the Backup Adapter from mobile phones/computer when it's working.
3. When using the Backup Adapter to back up data, please ensure that the Backup Adapter has a stable power source.

### **APP Installation on Mobile Phones**

#### **On iPhone/iPad Side**

To install the APP on your iPhone/iPad:

1. Open the App Store on your iPhone/iPad.
2. Search for "iStore Pro" and tap on the Install button.
3. Wait for the installation to complete.

#### **On Android Mobile Phones Side**

To install the APP on your Android mobile phone:

1. Open the Google Play Store on your Android mobile phone.

2. Search for “iStore Pro” and tap on the Install button.
3. Wait for the installation to complete.

## **The Use on Android Mobile Phones**

### **Auto-Backup Function**

The Auto-Backup function allows you to automatically backup your photos, videos, etc. for Android mobile phones while charging. To enable this function:

1. Ensure that the Backup Adapter is connected to a power supply and your Android mobile phone.
2. Open the iStore Pro App on your Android mobile phone.
3. Go to the Settings menu and enable the Auto-Backup function.

### **If You Don't Want to Auto Back Up**

If you don't want to enable the Auto-Backup function:

1. Ensure that the Backup Adapter is connected to a power supply and your Android mobile phone.
2. Open the iStore Pro App on your Android mobile phone.
3. Go to the Settings menu and disable the Auto-Backup function.

### **No External Memory Situation**

If there is no external memory (TF card or USB flash drive) inserted in the Backup Adapter:

1. Ensure that the Backup Adapter is connected to a power supply and your Android mobile phone.
2. All the data you back up will be saved in the internal storage of your Android mobile phone.

### **Backup Main Menu Introduction**

The Backup Main Menu provides various options for managing your backups. To access the Backup Main Menu:

1. Ensure that the Backup Adapter is connected to a power supply and your Android mobile phone.
2. Open the iStore Pro App on your Android mobile phone.
3. Tap on the Backup Main Menu button to access the different backup options.

## **The Use on iPhone/iPad**

The usage instructions for iPhone/iPad are similar to the instructions for Android mobile phones. Please refer to the previous sections for more details.

## **FAQ**

### **Can I use this Backup Adapter with both iPhone and Android mobile phones?**

Yes, this Backup Adapter is compatible with both iPhone and Android mobile phones.

### **What is the maximum capacity of the TF card supported by this Backup Adapter?**

The maximum capacity of the TF card supported by this Backup Adapter is up to 512GB.

### **Can I use a USB flash drive or hard drive with this Backup Adapter?**

Yes, you can use a USB flash drive or hard drive with this Backup Adapter. The maximum capacity supported is up to 512GB.

### How do I install the iStore Pro App on my mobile phone?

To install the iStore Pro App on your mobile phone, open the App Store (for iPhone/iPad) or Google Play Store (for Android) and search for "iStore Pro". Tap on the Install button and wait for the installation to complete.

### How do I enable/disable the Auto-Backup function?

To enable/disable the Auto-Backup function, open the iStore Pro App on your mobile phone, go to the Settings menu, and toggle the Auto-Backup function on/off.

### Foreword

Please carefully read this User Manual, which will help you to use the this backup Adapter more easily. If any questions, please contact our customer support via Email: [csplzmpwlq@gmail.com](mailto:csplzmpwlq@gmail.com)

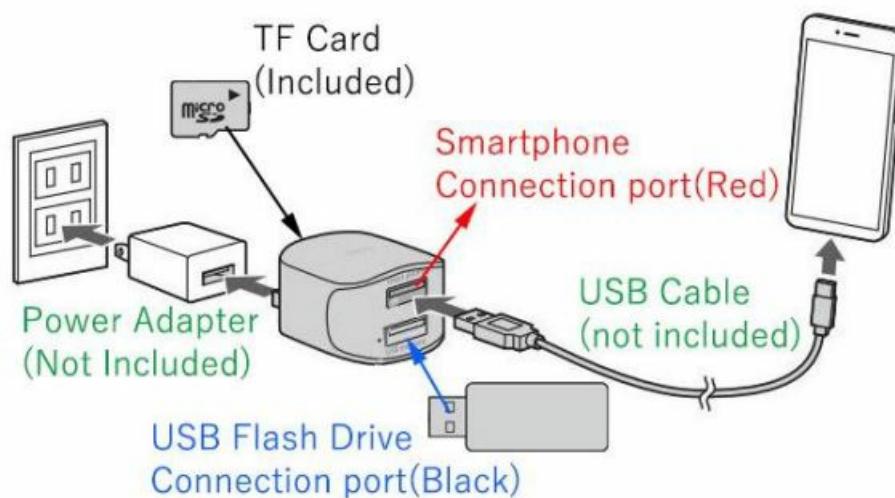
Thanks for choosing this Auto Backup Adapter, you can Auto Backup your photos, videos, etc. for iPhone/iPad or Android mobile phones while charging it. It is the Easiest auto-backup device without any extra operation.

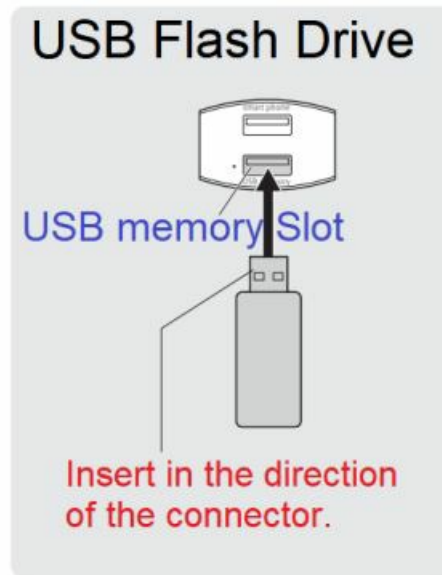
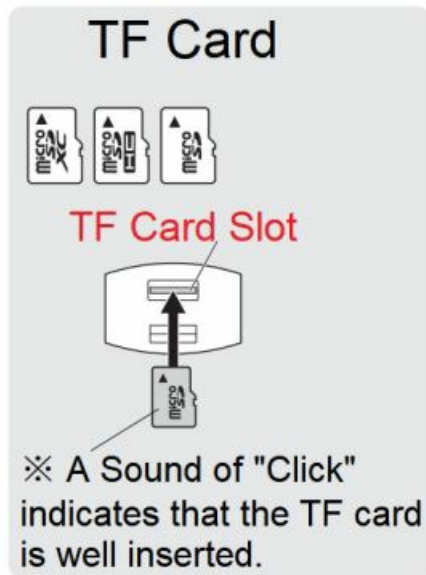
The product includes the following accessories:

- **Backup Adapter \*1,**  
TF card \*1 (capacity follows purchase) User Manual \*1
- **Warranty Card \*1**

\*\*\* The Power Adapter/USB Flash Drive/USB Cable mentioned in this User Manual is not included.\*

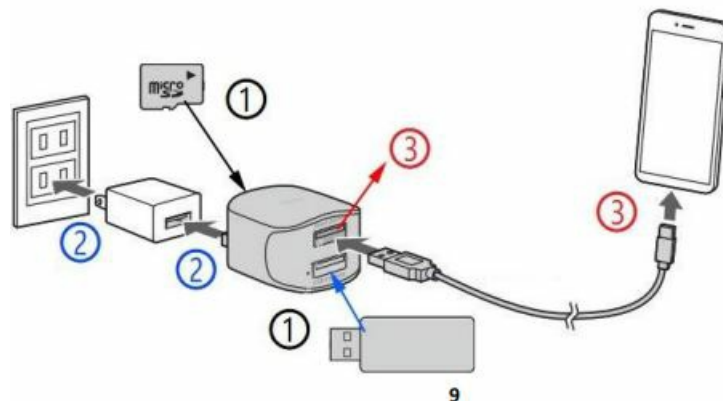
The connection is as follows:



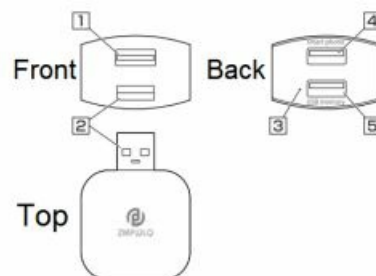


#### Product Connection Sequence:

1. Insert a TF card or USB flash drive
2. Connect with Power Supply.
3. Connect with a mobile phone.



The name and function of each part:



1. TF card slot: insert TF Card (contained).
  2. USB-A interface: connect to the USB ports of the computer or Power adapter.
  3. LED: LED light will light up when working.
  4. Port for smartphone connection (Red)
- Dedicated to connecting with mobile phones. Port for USB memory (black) – Dedicated to USB flash drive.
- This Backup Adapter needs to work with the dedicated APP. Just run the iStore Pro App at your mobile phone

without Internet or WiFi. No need to visit any Server or Cloud. It is absolutely safe & reliable without giving any personal information.

- This Backup Adapter comes with a TF card. All the data you back up would be saved in this TF card by default (if no extra USB memory is inserted). The Maximum capacity of the TF card supports up to 512GB. When you insert the USB-A port into the computer, it works as a normal TF card reader, you can transfer the backup data between this Backup Adapter and the computer directly.
- This Backup Adapter also supports a USB flash drive (The Maximum capacity supported up to 512GB) or a hard drive in the same time. If both the TF card and USB flash drive are inserted in this Backup Adapter, you can set the backup path from Settings.

### Warm Tips

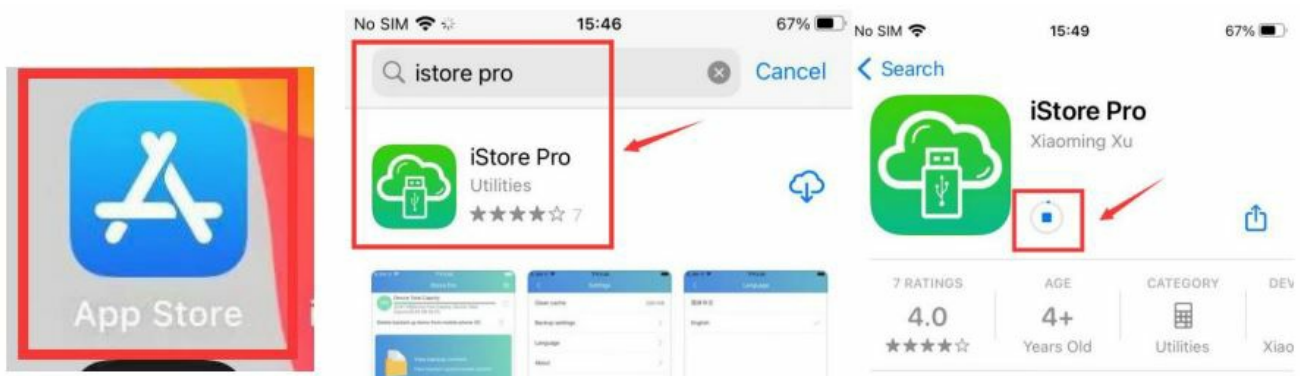
1. Do connect the Backup Adapter to the power supply 1st, then it auto-backs up your mobile phone while charging.
2. Please Do Not Remove the Backup Adapter from mobile phones/computers when it's working.
3. When using the backup Adapter to back up data, please ensure that the backup Adapter has a stable power supply. A power failure or unstable power supply may cause transfer failure or file even USB damage.
4. Not all computers and TF cards can be supported.
5. For the first time, all default selected items will be backed up. After that, it will only back up the newly added items, it will not repeatedly back up the old and already backed-up items.

### APP Installation on Mobile Phones

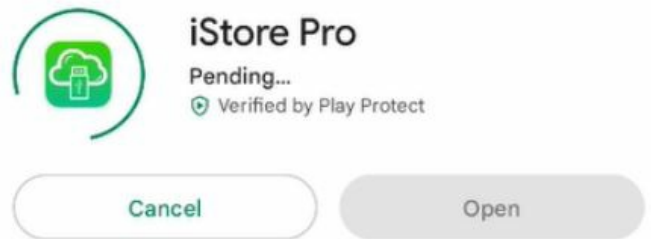
#### On iPhone/iPad Side

There are 2 ways to install the APP:

1. You can download and install the app from the App Store. Search for "iStore Pro ". (Please Note: search from APP store, instead of Apple Store)
2. Scan the QR code on the Giftbox or User Manual to download and install the APP.



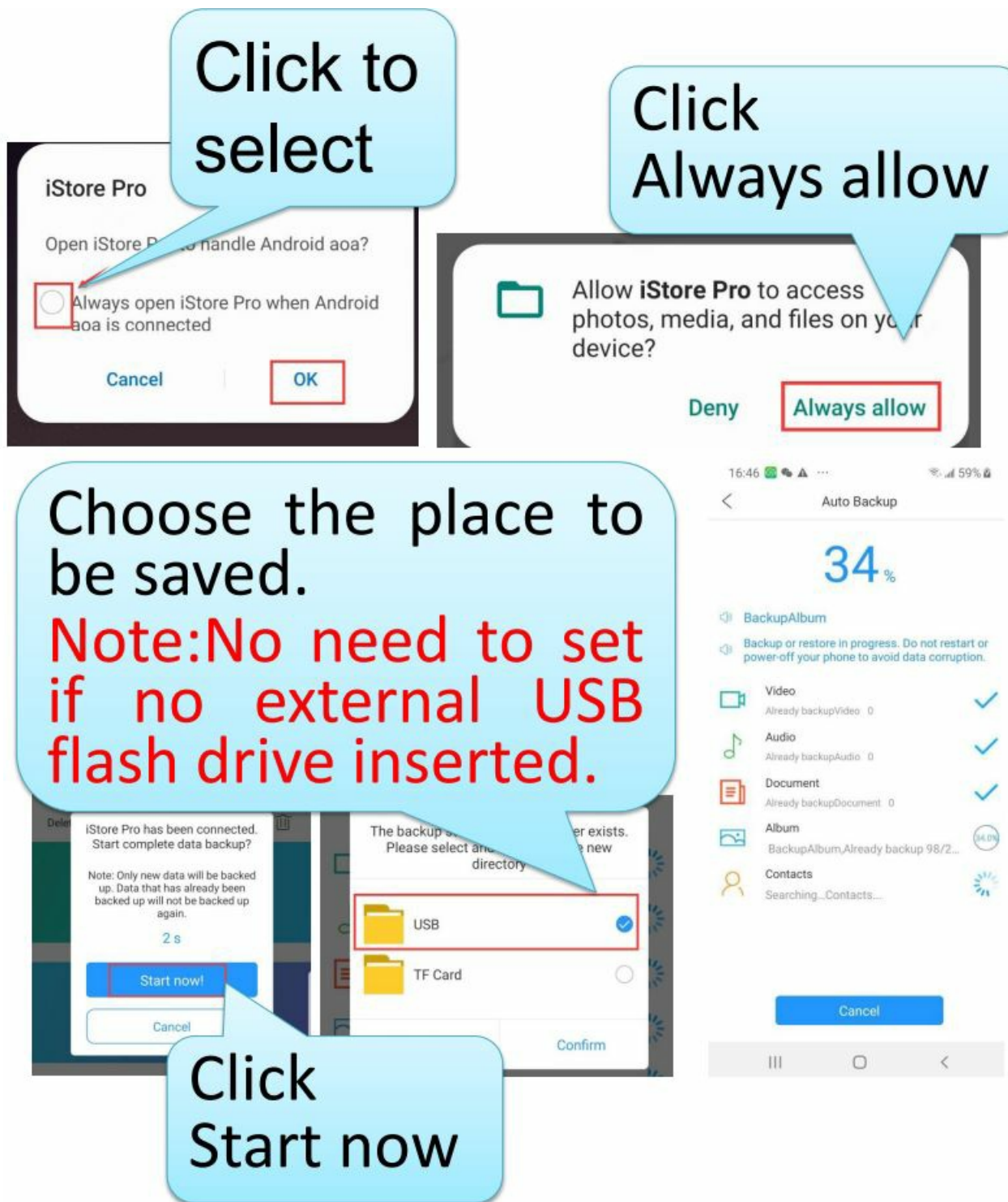
3. On Android Mobile Phones Side There are 2 ways to install the APP
  1. Scan the QR code on the Giftbox or User Manual to download and install.
  2. You also can download and install the app from Google Play. Search for "iStore Pro"



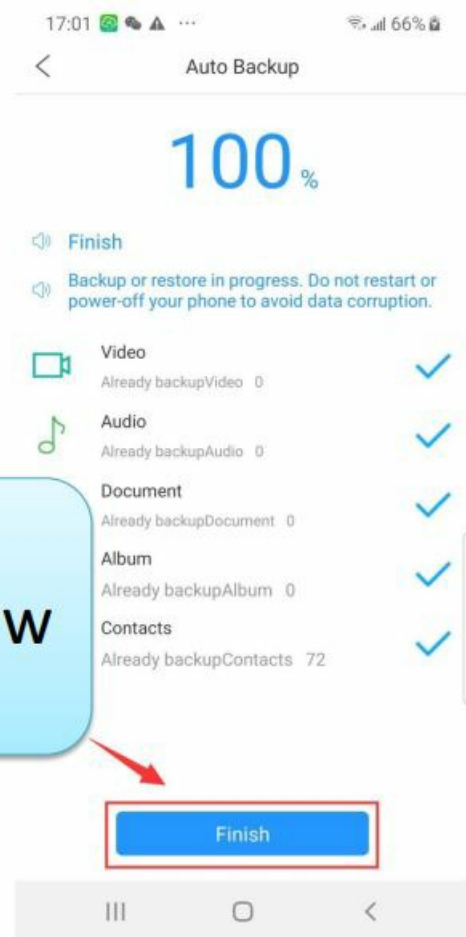
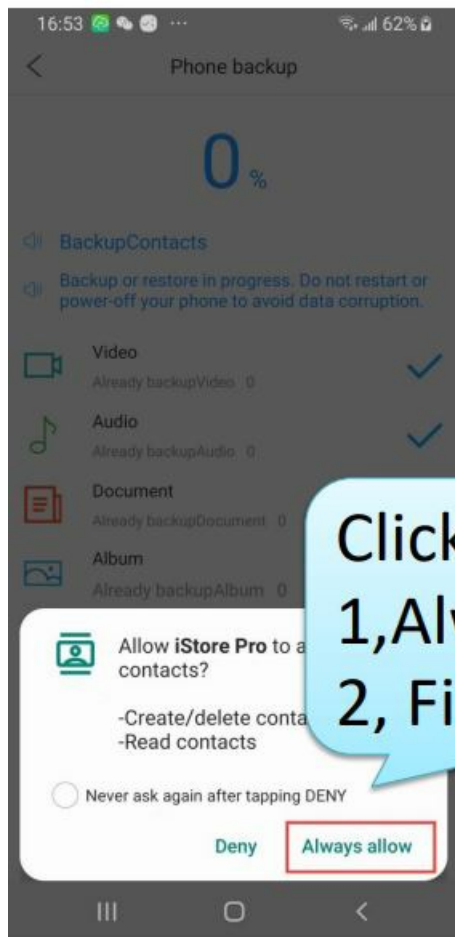
## The use on Android Mobile Phones

### Auto-Backup function:

1. Please remember to download the App first and the following messages will pop up and need to be confirmed.

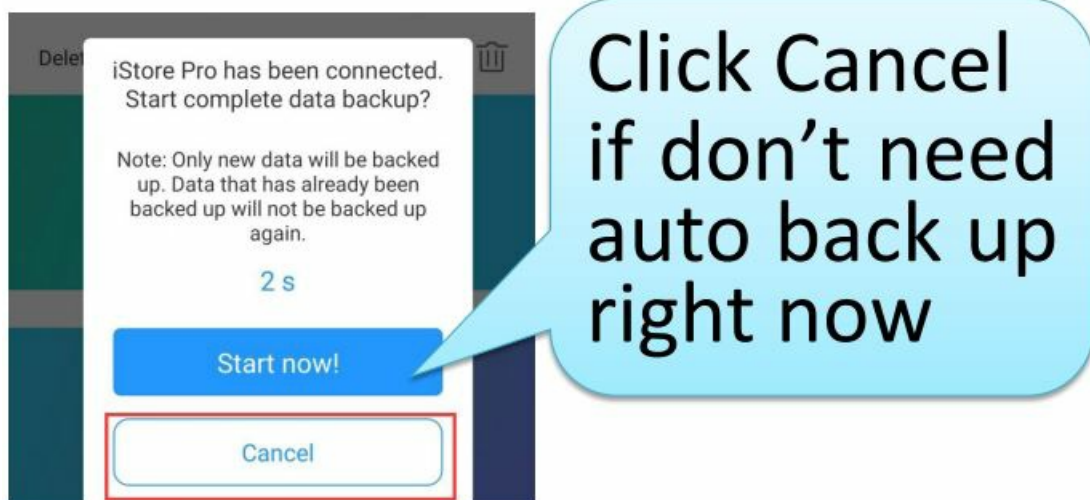






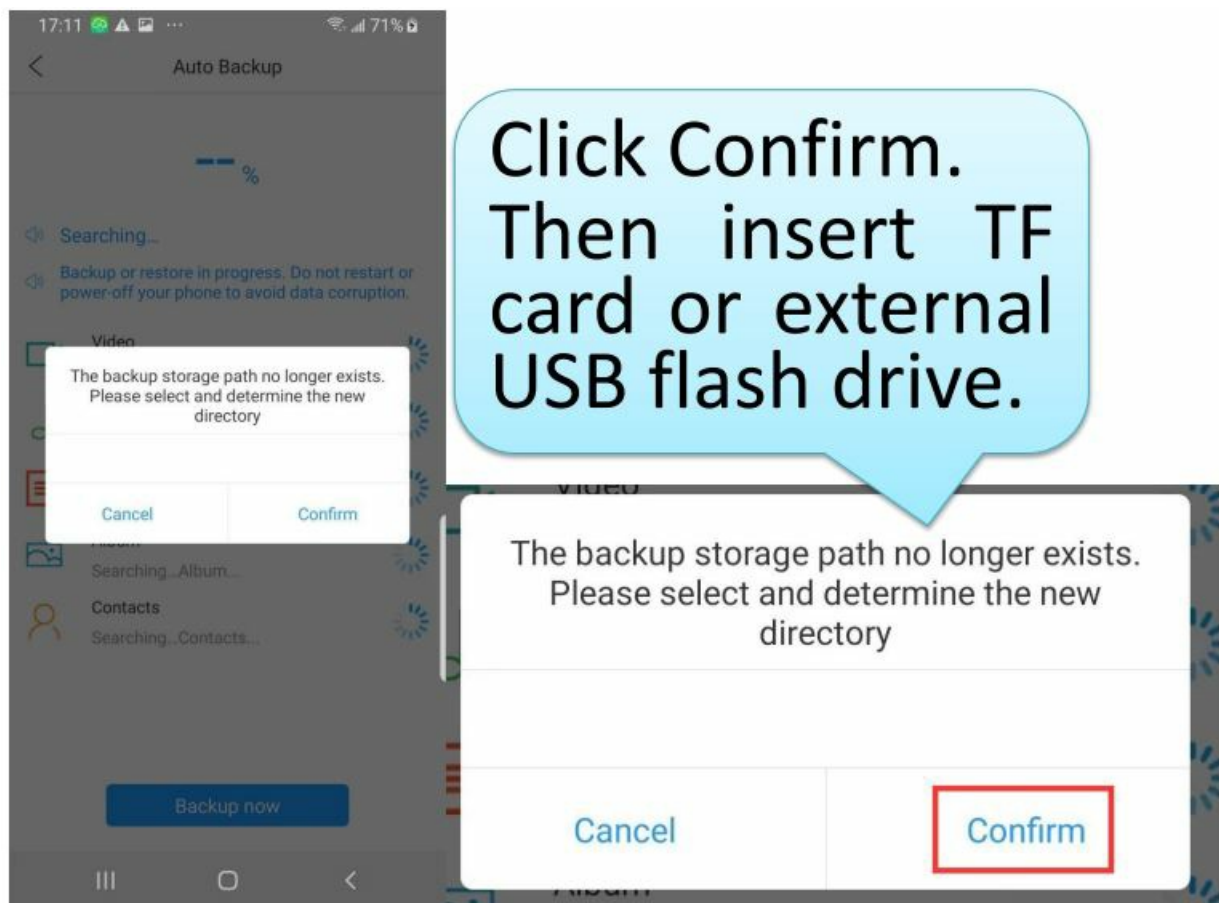
## 2. If don't want to auto back up.

Click Cancel to enter the main interface if don't need auto backup right now. You still can manually back up later if needed.

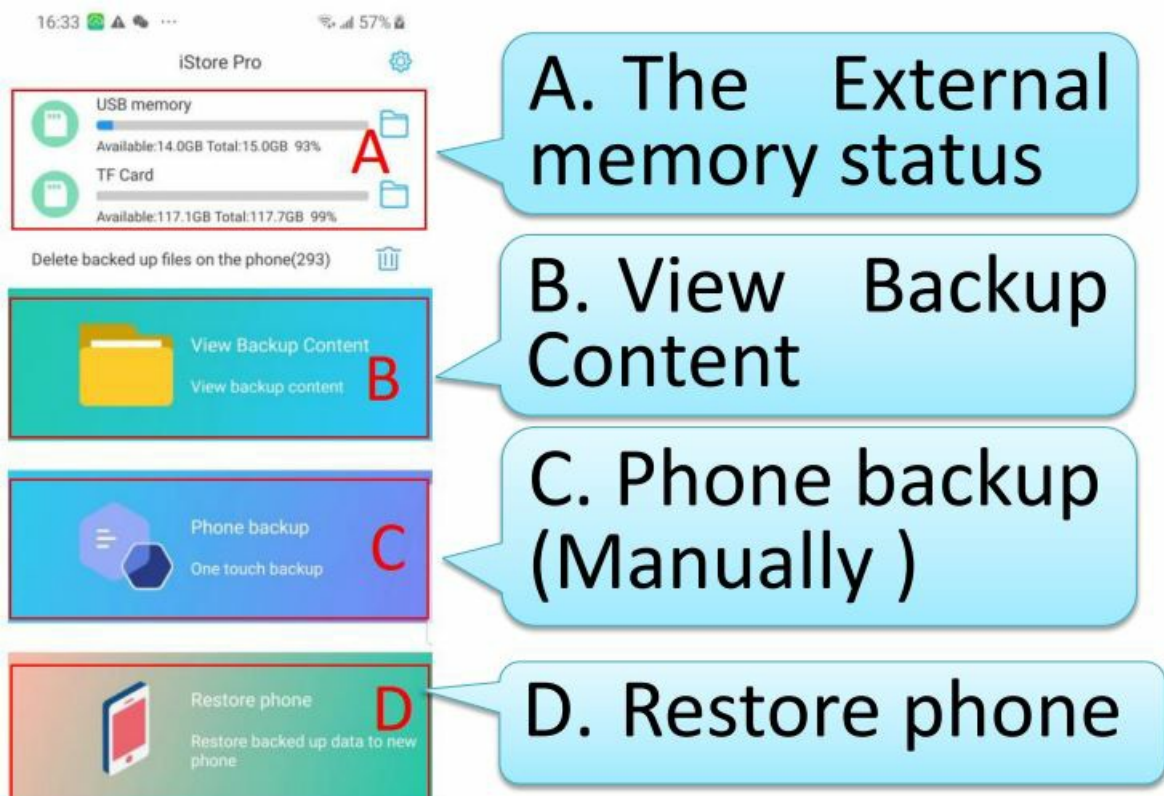


## 3. No External memory situation

If there is no TF card or USB flash drive inserted, it will show as the followings. Please insert external memory (TF card or USB flash drive) first.



#### 4. Backup Main Menu Introduction:



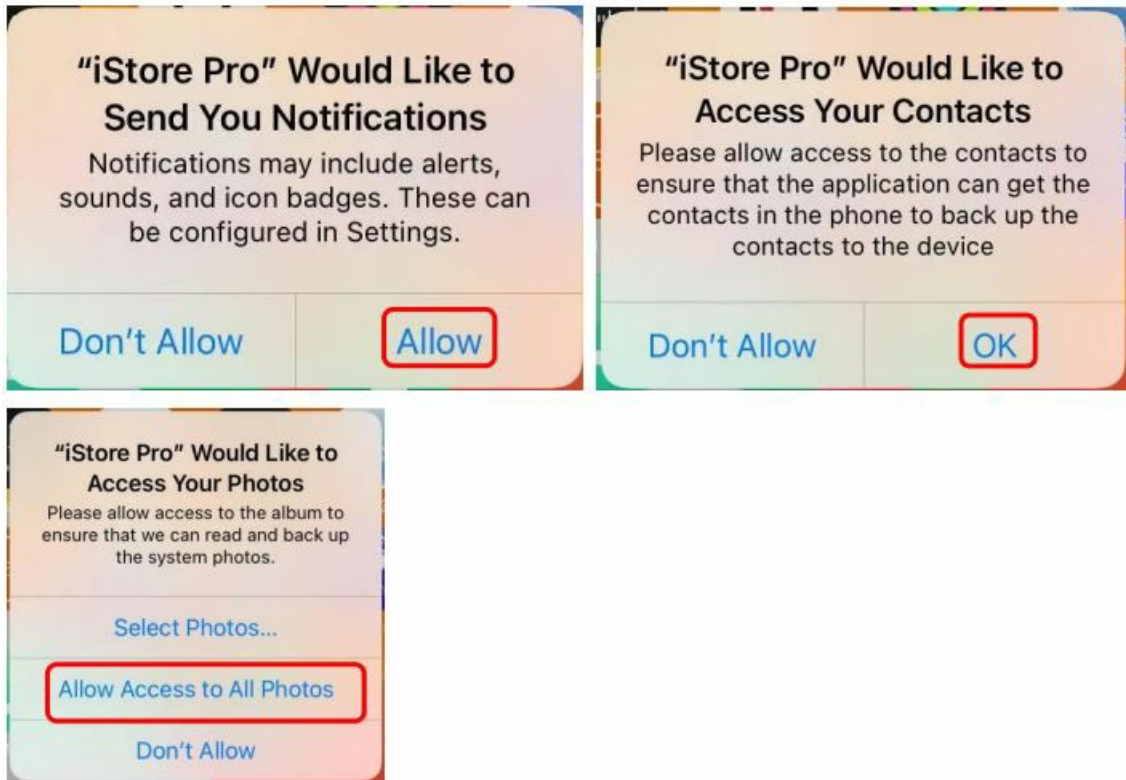
- **A.** Show the data storage location, and capacity usage status, and view the corresponding backup data, as well as do some file management (for detailed operations, please refer to 7.1-7.3 in this manual)
- **B.** View Backup Content: You can view the most recent backup data of the current phone.( for detailed operations, please refer to 8.1-8.4 in this manual)
- **C.** Phone Back up Manually: You can Manually back up through this menu.
- **D.** Restore the data from the USB memory/TF card to a new mobile Phone. ( for detailed operations, please refer to 9.1-9.2 in this manual)

## The use of iPhone/iPad

For iPhone/iPad, it will automatically back up Camera Roll/Album, and Contacts. Please remember to download the App first.

### 1. Auto-back-up for the 1st time.

When the Backup Adapter is connected to the iPhone/iPad for the first time and in charging, the following messages will pop up, which need to be confirmed:



### 2. Auto-back-up after the 1st time.

When the Backup Adapter is used on the iPhone for the second time or later, the main menu will automatically have the following prompts (P1-P3), the APP will automatically run in the background, and new photos and videos will be automatically backed up. At this time, if you click the App to enter the menu, it will display (P4) be backing up.





P1. Device is connected, do not pull out



P2. Device has completed initialization



P3. Starting automatic backup

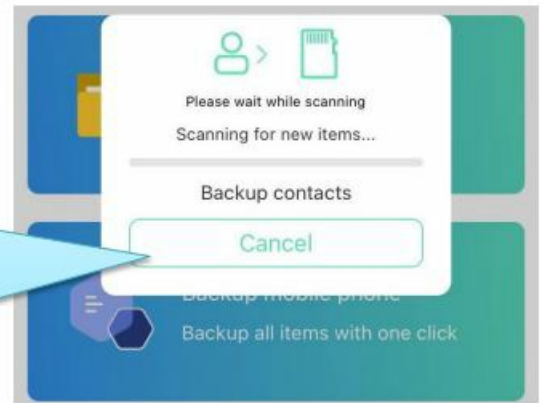


P4. Be backing up

### 3. If don't want to auto-back up

You can click Cancel to enter into the main interface to review the data if don't want to auto-back up now, and manually back up later.

Click Cancel  
if don't need  
backup now



#### 4. Backup Main Menu Introduction:



A. The External  
memory status

B. View Backup  
Content

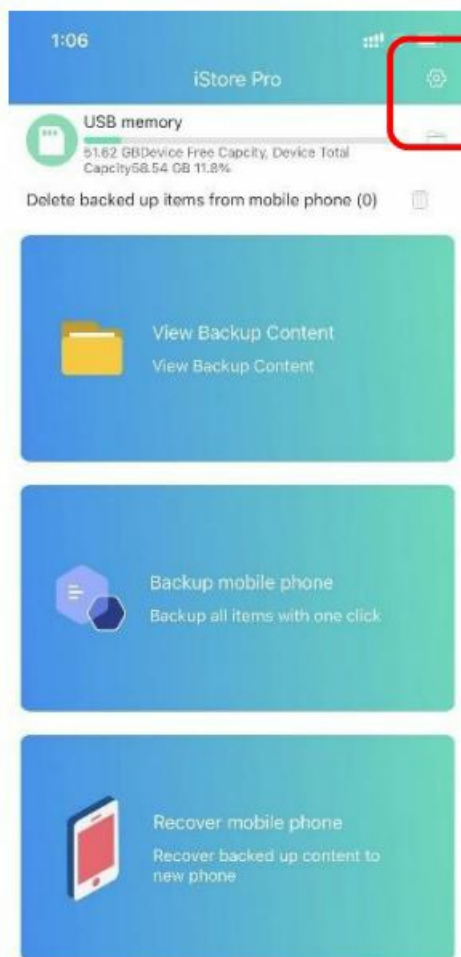
C. Phone backup  
(Manually )

D.Recover phone

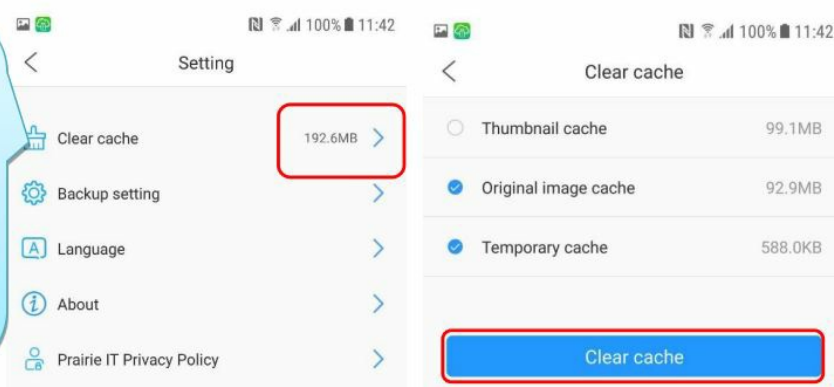
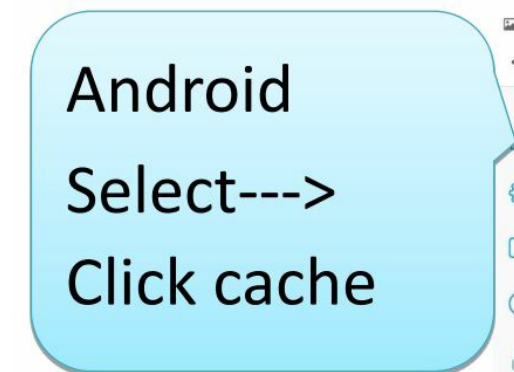
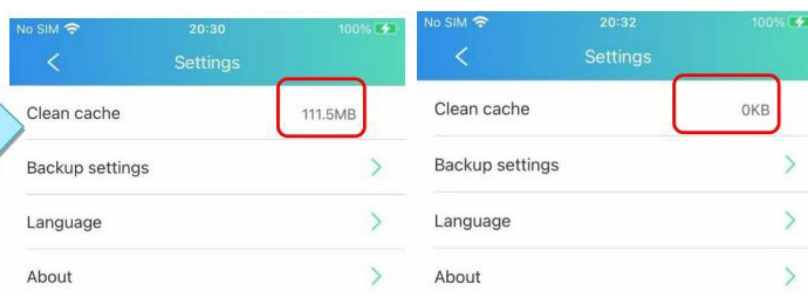
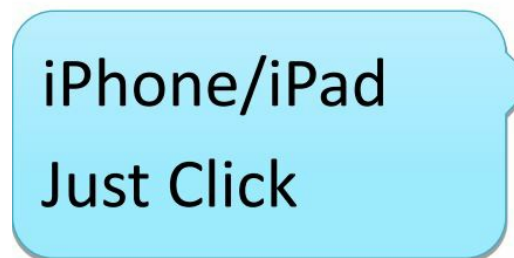
- **A.** Show the data storage location, and capacity usage status, and view the corresponding backup data, as well as do some file management (for detailed operations, please refer to 7.1-7.3 in this manual)
- **B.** View Backup Content: You can view the most recent backup data of the current phone. (for detailed operations, please refer to 8.1-8.4 in this manual)
- **C.** Manually Back up: You can Manually back up through this menu.
- **D.** Recover the data from USB memory/TF card to a new mobile Phone (for detailed operations, please refer to 9.1-9.2 in this manual)

#### About Settings

You can Clear the Cache and set Backup Options, Language, etc. in Settings.



## 1. Clear Cache

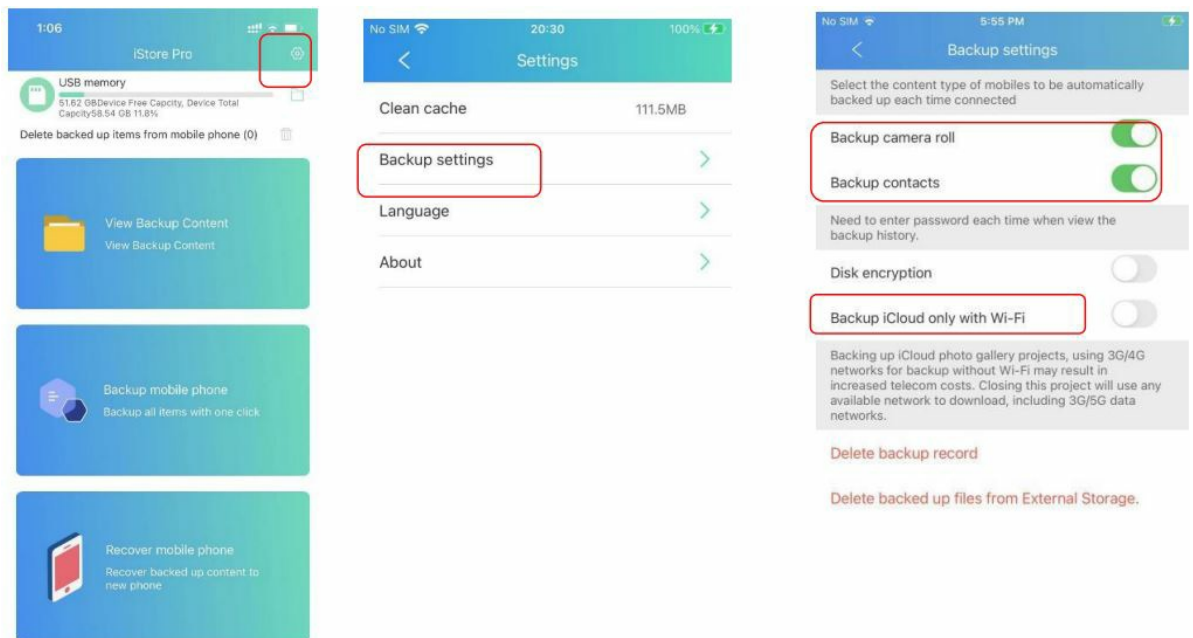


## 2. Backup settings

- For iPhone/iPad

You can select both Camera Roll and Contacts or either. Please click Settings—> Backup Settings —> Select the items that need to be backed up —> Back to the main interface —> Click Phone Backup—>Backup Now—>Backup completed.



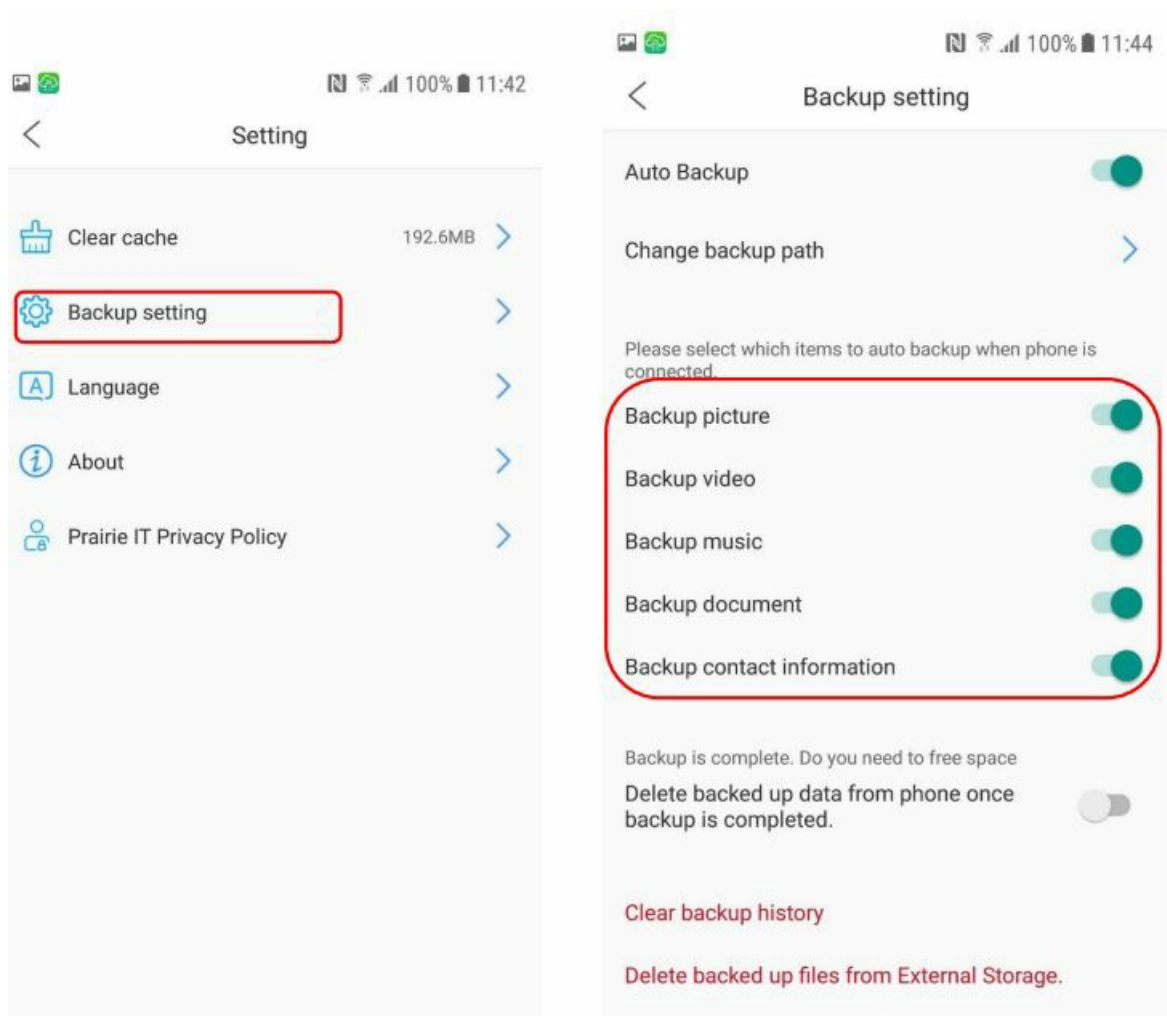


- Backup iCloud only with WiFi:

Turning on this button means this APP only downloads and backs up the photos and videos from iCloud while with WiFi. \*\*\* iCloud photos and videos would be downloaded to iPhone/iPad first, then back up to this Auto Backup Adapter, so please make sure there is enough space in iPhone/iPad to transit iCloud photos or videos.

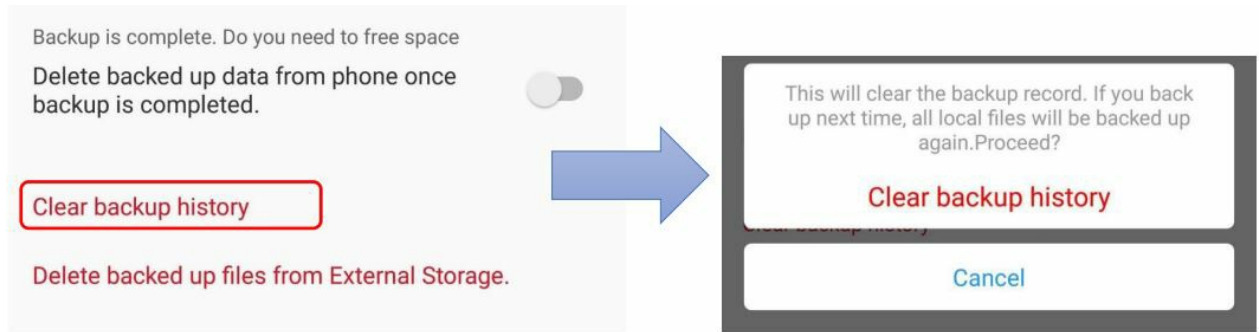
## 2. For Android mobile phones

You can select all or multi-select the picture, video, music, document, and contact.



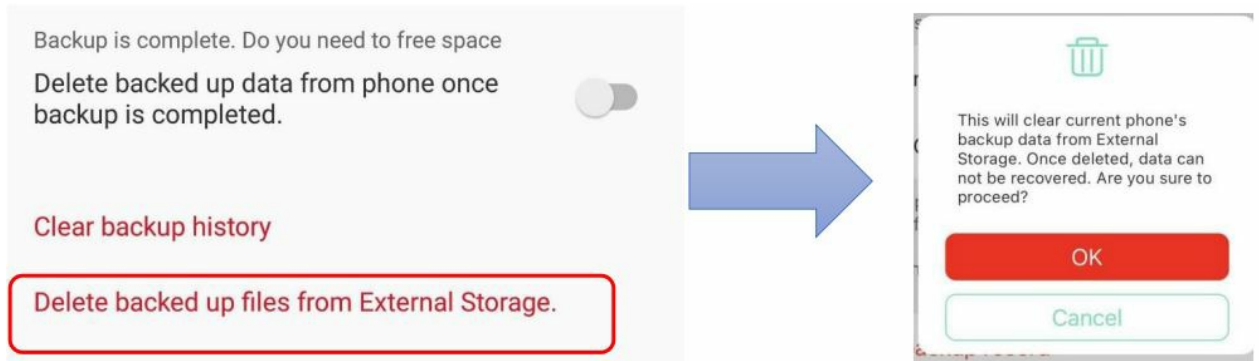
## 3. Delete backup record

This will clear the backup record. If you back up next time, all local files will be backed up again.



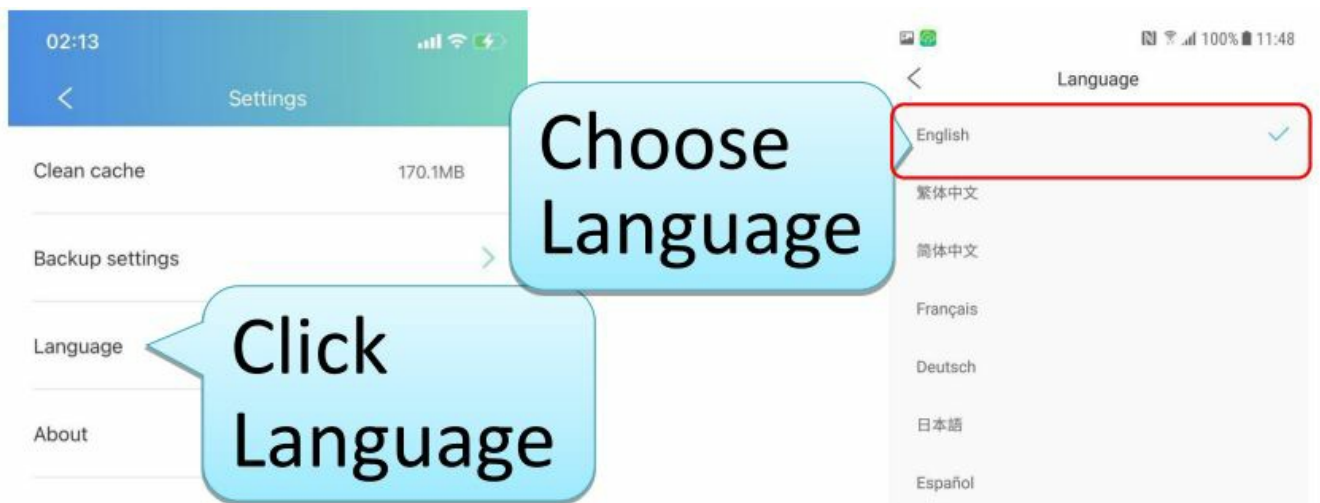
#### 4. Delete backup files from External Storage.

This will clear the current phone's backup data from USB memory. Once deleted, data cannot be recovered from the USB memory.



### 3. Set Language

You can choose a language by this menu.



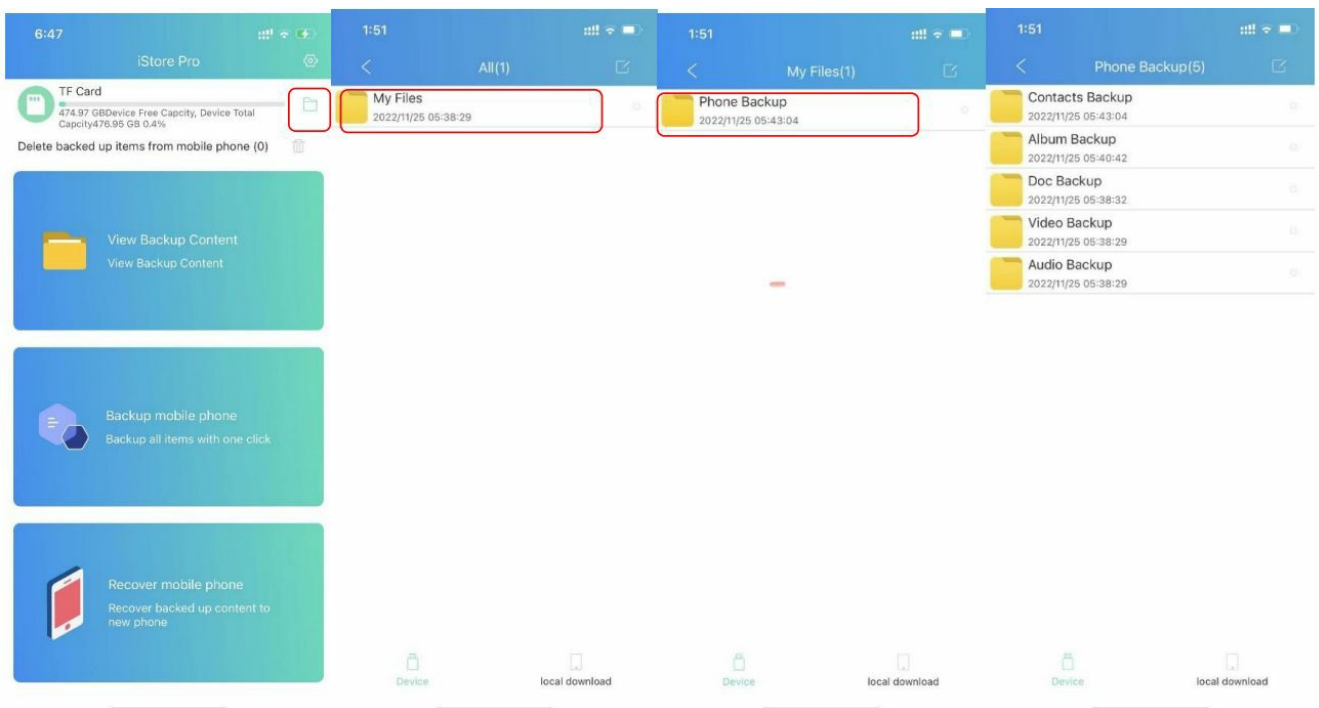
## How to View and Operate backup files from external storage

### (Part A)

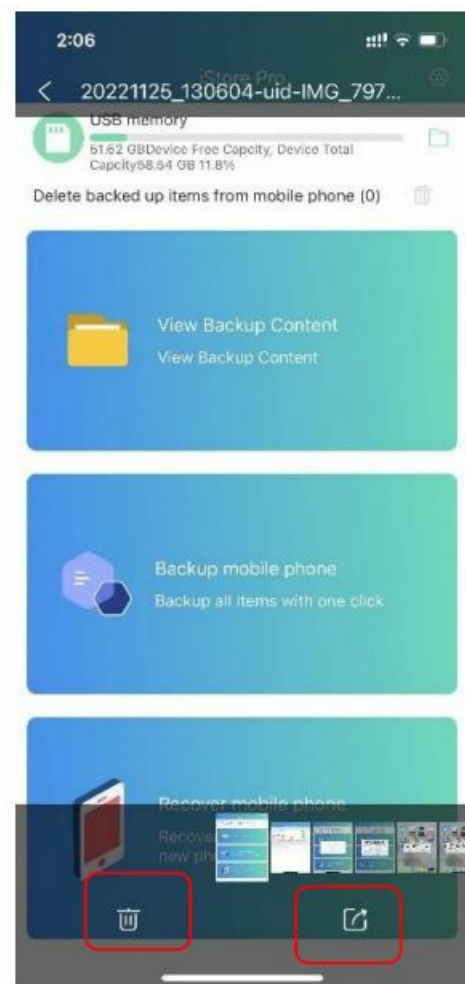
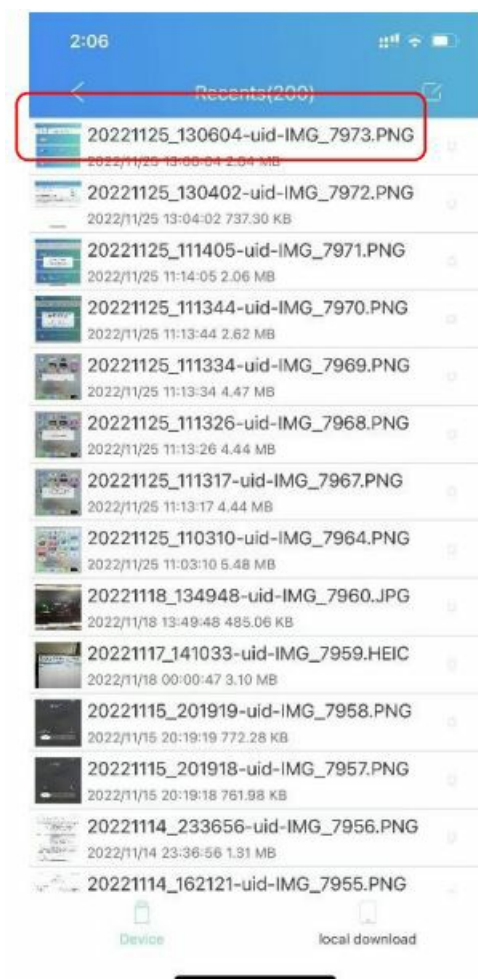




1. Through Part A, select storage, enter My Files, and then can find the backup files.



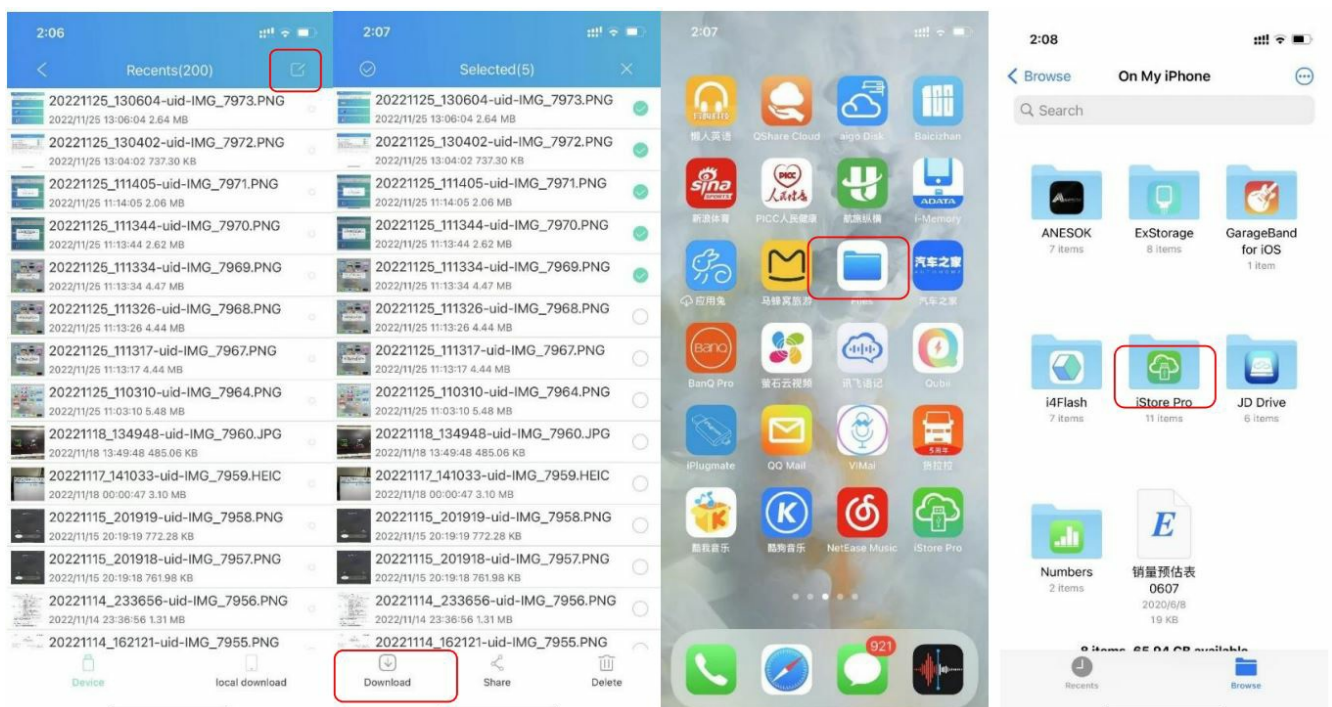
2. For Android or iPhone, select a single file, you can share or delete the file



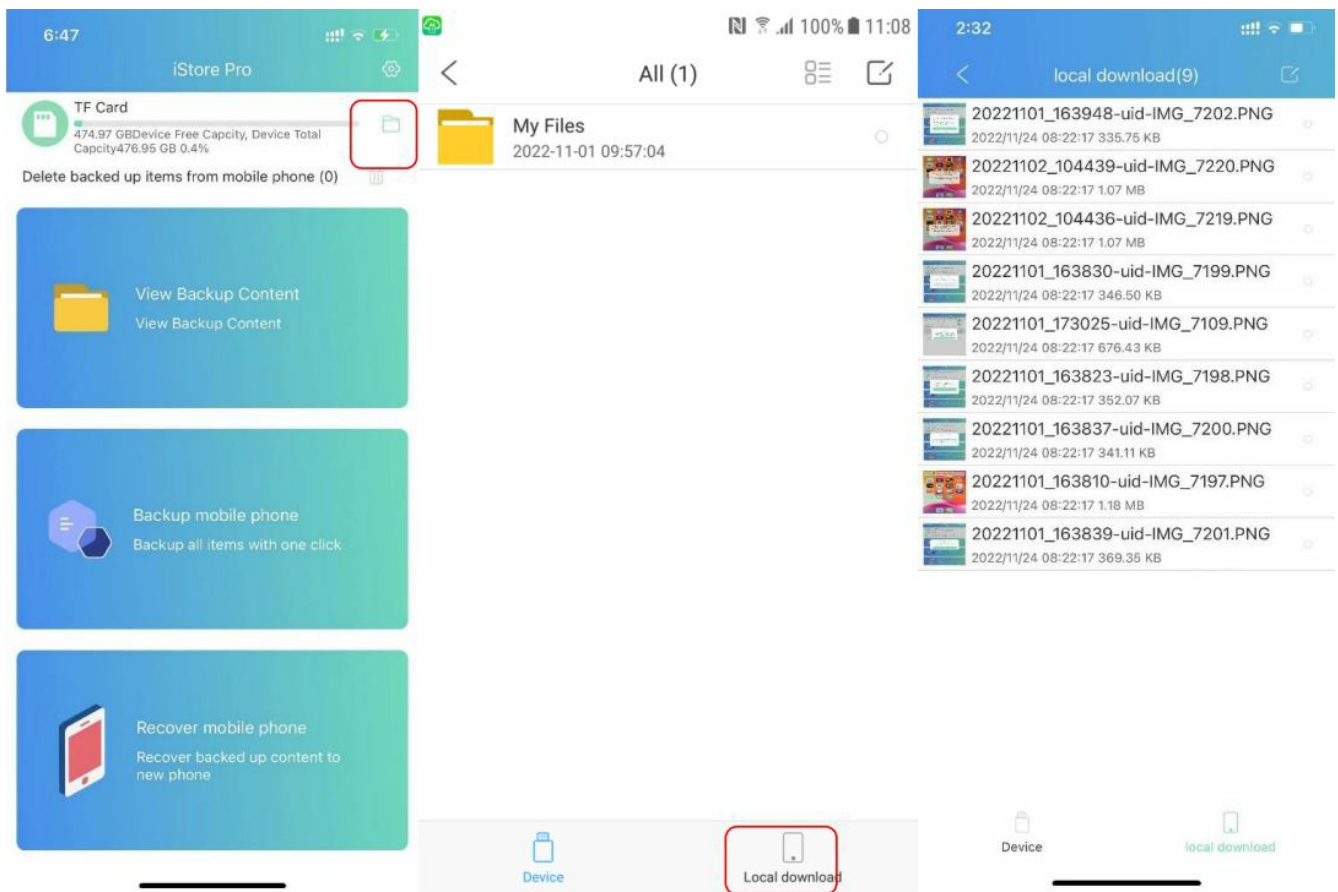
When selecting multiple files, iPhone and Android phones still have the delete and share function (no more than 9 pictures when sharing);

### 3. iPhone download function

You can download the selected photos to the iPhone's Files, you can view them through the following step, or through the Local download menu

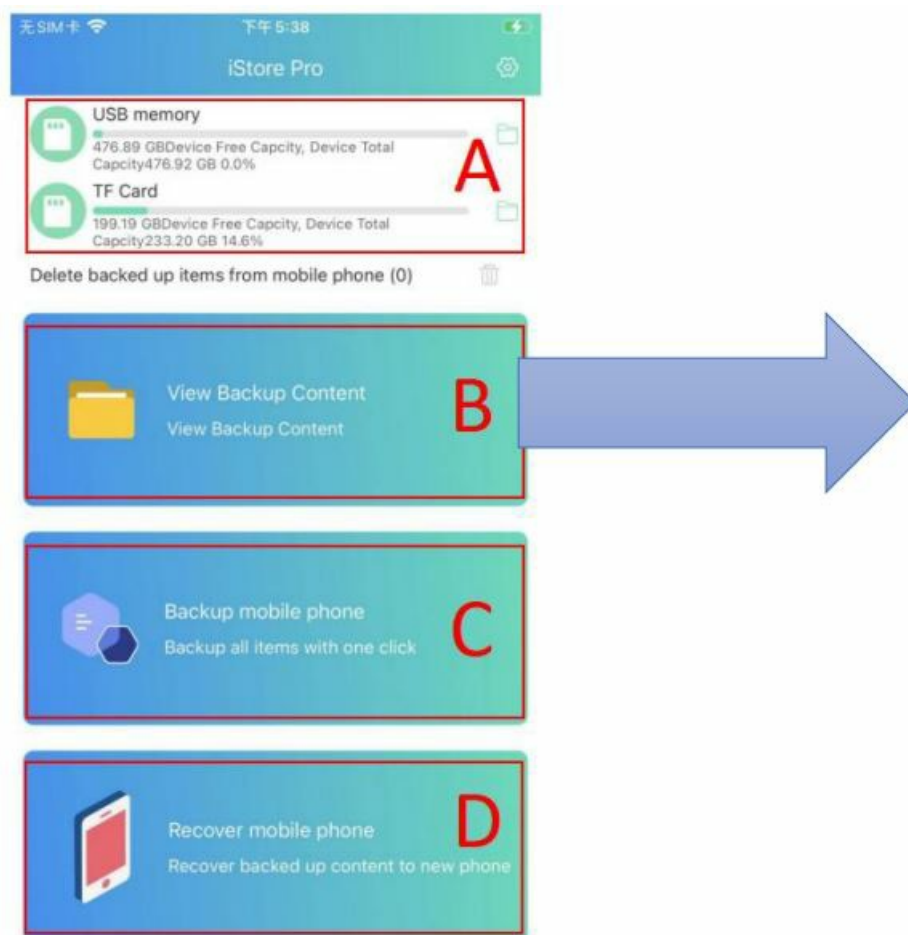


### 4. Through the Local download menu



## View Backup Content

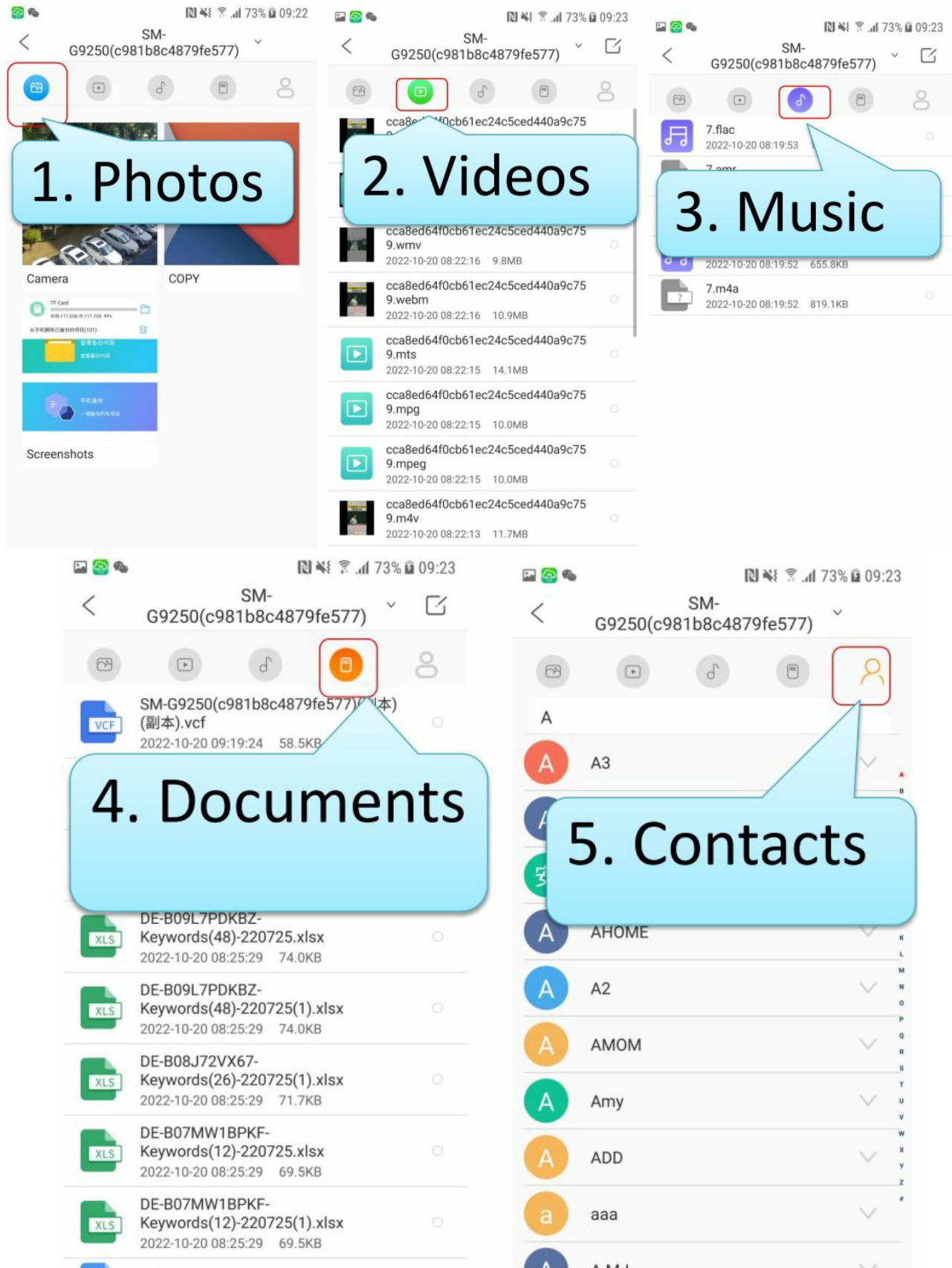
( Part B )





## Android mobile phone side:

1. You can view Photos (which can be sorted and selected by Date), Videos, Music, Documents, and Contacts.



## 2. iPhone side:

You can view Album (photos can be sorted and selected by Date), and Contacts.



3. Also you can Share Delete Photos / Videos / Music / Documents when you selected files. When you share files, the selected files cannot be more than 9 each time.

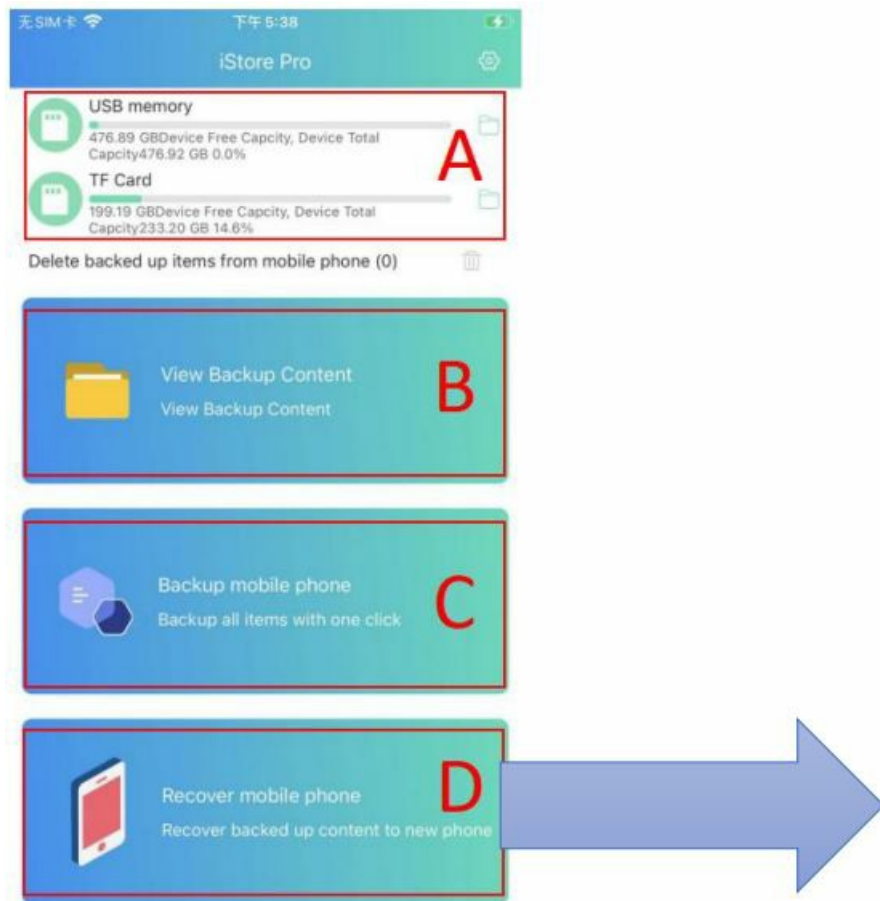


4. Recover/Restore when selecting multiple files:

- **For iPhone:** Recover the photos or videos from USB memory to iPhone/iPad Album
- **For Android:** Restore photos, videos, music, and documents is from USB memory to the Android mobile phone Files.
  - Contacts cannot be recovered in Part B

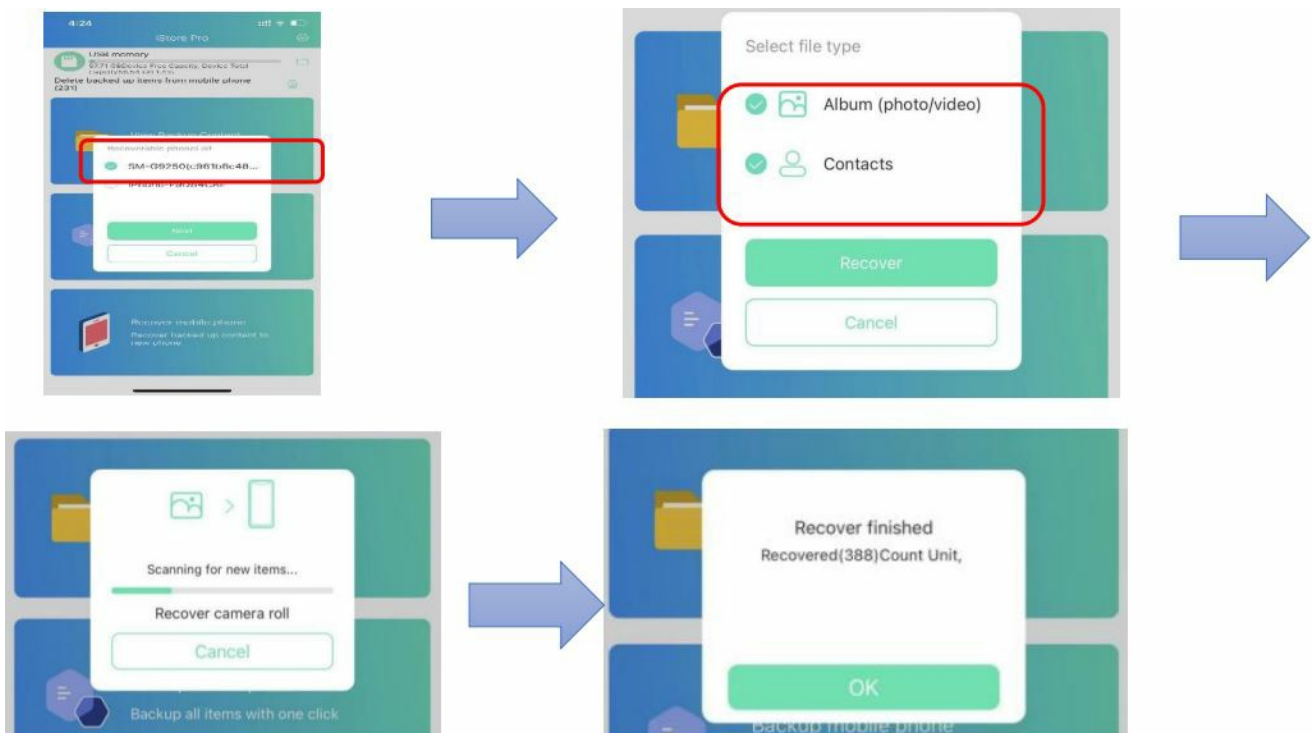
**Recover/Restore mobile phone**

## (Part D)



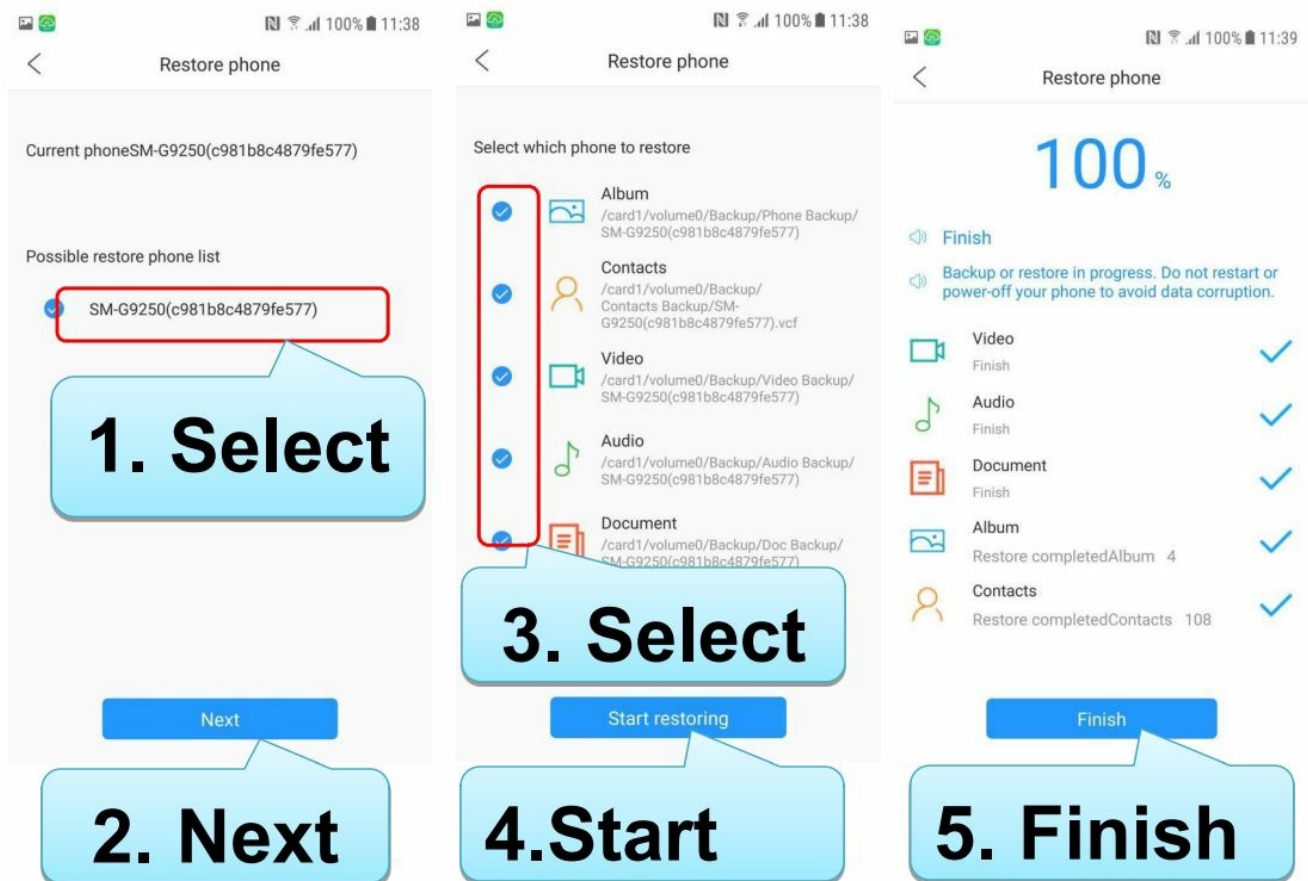
Recover/Restore phone means Recover the data from external storage to Phone. Click Recover/Restore Mobile Phone → select the model number or name of Phone that needs to be recover in the phone list → selected file type, then go ahead as the steps.

### 1. iPhone/iPad



### 2. Android mobile phones





### Delete backup items from a mobile phone:

One-click deletes the backed-up data from the mobile phone.

## Warranty & Contact US

### Warranty

All of our products are covered by an 18-month Limited warranty from the original purchase date. If any questions, please contact our after-sales support team, we always be standing by to help

### Contact US

Email: [csplzmpwlq@gmail.com](mailto:csplzmpwlq@gmail.com)

Website: <http://www.zmpwlq.com>


For operation videos, please visit YouTube:

**Customer** Service ZMPWLQ

Scan to download the APP



## Documents / Resources

 PL Backup Adapter User Manual <small>iOS Mobile Phones Supported: iOS 10.0.1 to 10.1.1 &amp; 10.2.1 to 10.2.2 and later Android Mobile Phones Supported: 4.0.3 to 4.0.4, 4.1.2 to 4.1.3 and later</small>	<a href="#">Auto Backup Adapter 128GB Auto Photo Backup Cube</a> [pdf] User Manual 128GB Auto Photo Backup Cube, 128GB, Auto Photo Backup Cube, Photo Backup Cube, Backup Cube
--	--

## References

-  [SZJDTech.com | Future Network for Today](#)
-  [Shenzhen Pinlian Technology - Powered by Discuz!](#)
- [User Manual](#)