



AUTHENTREND Hello Dongle Touch Base Fingerprint USB Dongle User Guide

[Home](#) » [AUTHENTREND](#) » AUTHENTREND Hello Dongle Touch Base Fingerprint USB Dongle User Guide 

Contents

- [1 AUTHENTREND Hello Dongle Touch Base Fingerprint USB Dongle](#)
- [2 Product Information](#)
- [3 Product Usage Instructions](#)
- [4 Start your Fingerprint to Windows Hello](#)
- [5 LED](#)
- [6 Documents / Resources](#)

AUTHENTREND

AUTHENTREND Hello Dongle Touch Base Fingerprint USB Dongle



Product Information

The AuthenTrend ATKey.Hello (Hello Dongle) is a touch-based fingerprint USB dongle. It is equipped with WBF driver that is WHQL certified and ready on Windows Update. The dongle supports Windows 10 32/64-bit OS.

Product Usage Instructions

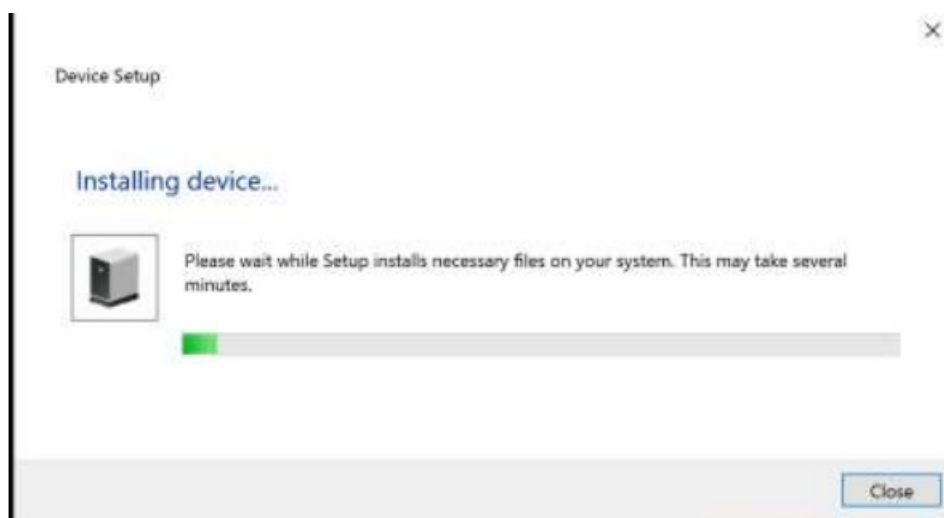
1. If you are a new user, insert the ATKey.Hello dongle into an available USB port. Please note that ATKey.Hello only supports Windows 10 32/64-bit OS.
2. If your OS is Windows 10 RedStone version (upgrade after 2016.08) and connected to the internet, the driver will be installed automatically from Windows update when you insert the dongle. Proceed to the next step.
3. If your OS is not upgraded to Windows 10 RedStone version, you can still find the driver from Windows update by searching automatically for updated driver software.
4. If necessary, manually install the driver by following these steps:
 - Download the driver files from http://authentrend.com/download/ATKey.Hello_WBFDriver3.5.2.2.zip.
 - Unzip the downloaded file.
 - Install the driver from the device manager by browsing your driver folder.
 - In the device manager, find Biometric devices => Egis EH570 sensor with an exclamation mark.
 - Click on the device and from the pop-up dialog, click "Update Driver" or "Install Driver".
 - Browse the target folder to install the driver.
 - If you are using an x64 system, browse the INF folder inside the Win10Release sub-folder.
 - Reboot the system to activate the changes.
5. To start using your fingerprint with Windows Hello, follow these steps:
 - Go to Settings => Accounts.
 - Select "Sign-in Options" and choose "Fingerprint Setup".
 - If you haven't set up a PIN code yet, Windows Hello will guide you through the process.
 - Enroll and register your fingerprint.
 - Pay attention to the LED of the ATKey.Hello dongle:
 - Flashing Blue: Touch your fingerprint.
 - Green: Enroll fingerprint success / Fingerprint matching.
 - Red: Enroll fingerprint fail / Wrong fingerprint.
 - Blue: Dongle is ready.
 - Enroll your fingerprint by following the instructions provided by the dongle LED or the GUI. It is recommended to enroll your finger in different areas for better accuracy.
 - All set! It is recommended to register at least 2 fingers for the account, and you can also register different fingers for different accounts.
6. When the LED on the dongle is flashing blue, it means Windows is requesting fingerprint verification. Simply touch your registered finger to log in. If the LED shows green, it means the fingerprint matched. If the LED shows red, it means the fingerprint did not match, so please try again or touch with the correct finger.
7. If you have previously installed version drivers, follow these steps:
 - Uninstall the driver first.

- Upgrade by INF following Windows Hello Validation requirement.
- Download the driver ZIP and unzip it to the specific folder.
- Browse to the folder.
- If you are using an x64 system, browse the INF folder inside the Win10Release sub-folder.

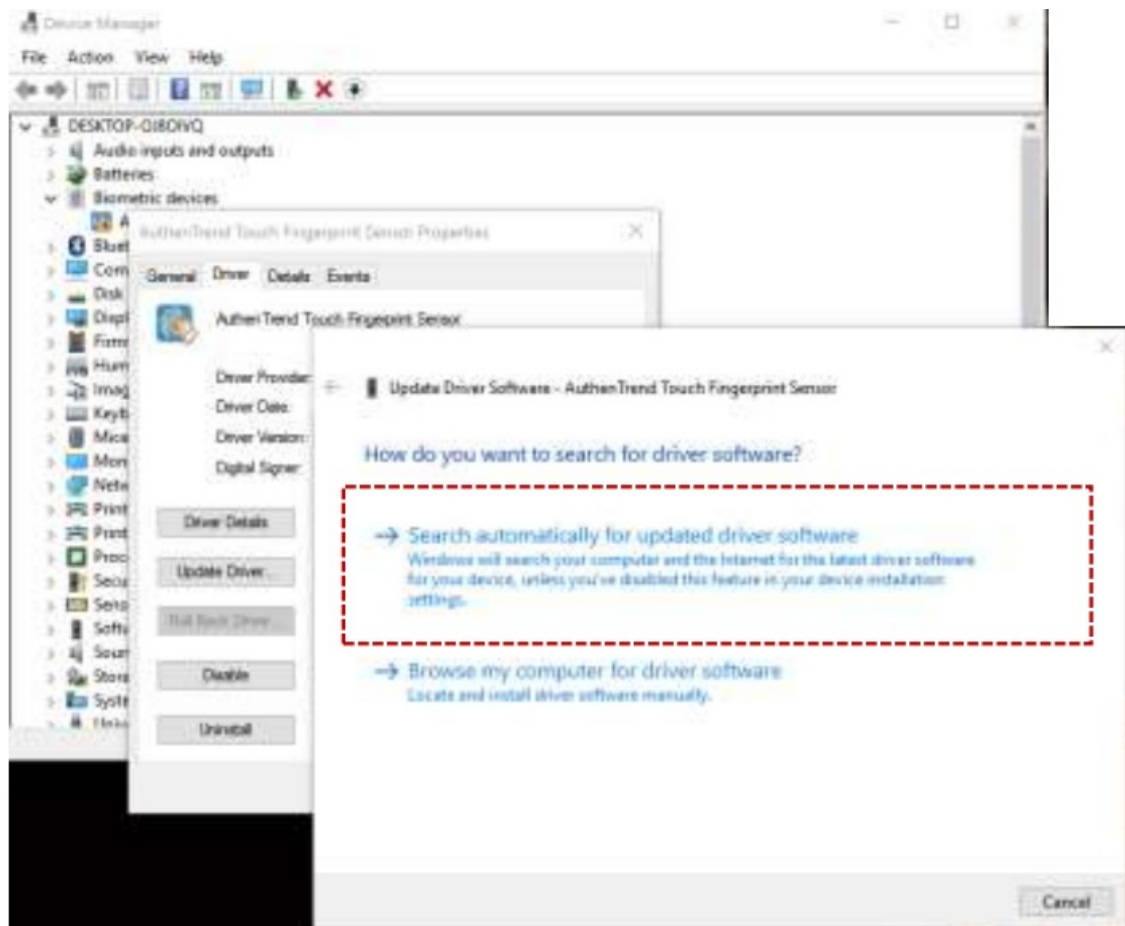
AuthenTrend ATKey.Hello (Hello Dongle), touch base Fingerprint USB dongle
(WBF driver WHQL certified, ready on Windows Update)

If you are a new user (go to next section if you ever installed previous ATKey.Hello driver)

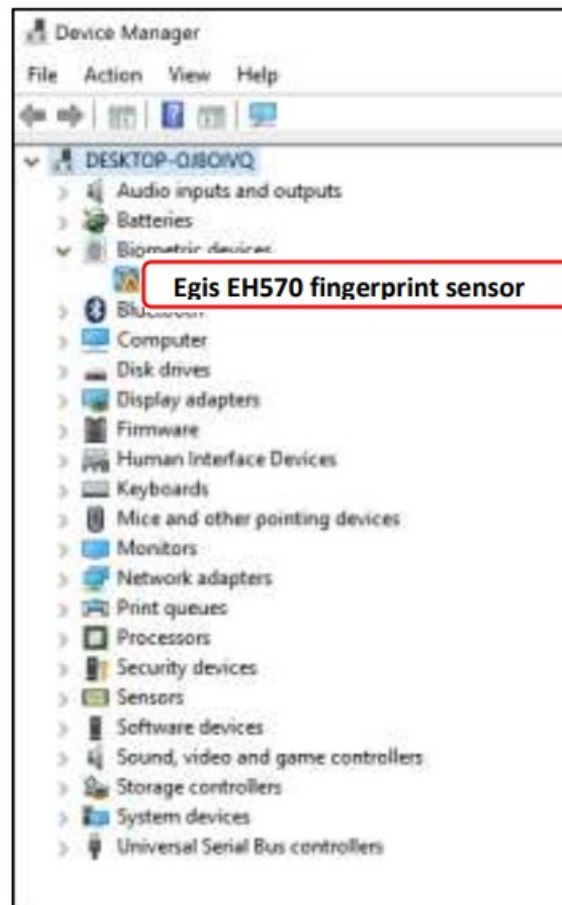
- Insert ATKey.Hello dongle to available USB port
 - Please be noted, ATKey.Hello only supports Windows 10 32/64-bits OS
- If your OS is Windows 10 RedStone version (upgrade after 2016.08) and connect to internet, when you insert your dongle, it will install driver from Windows update automatically.



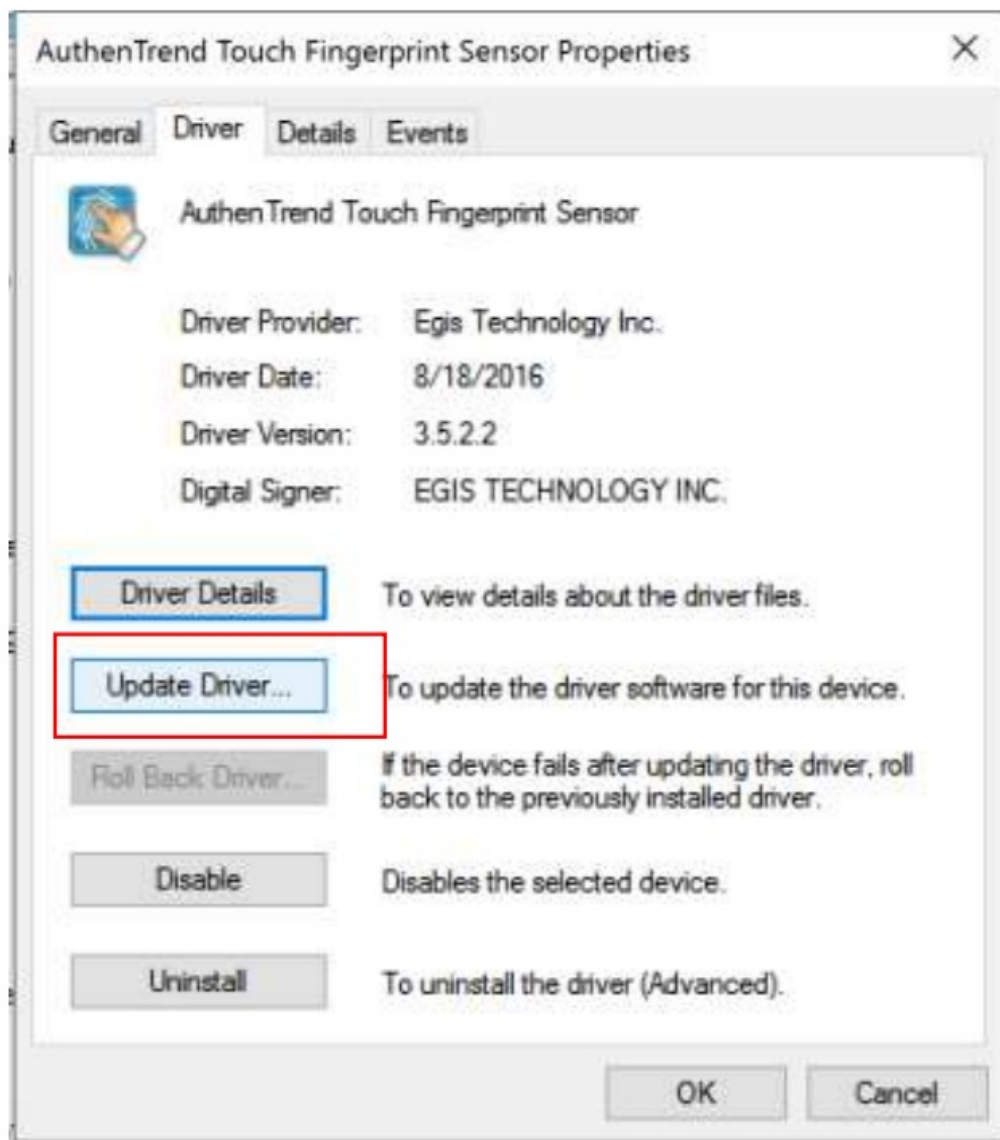
- Then jump to Start your Fingerprint on Windows Hello
- If your OS is NOT upgrade to Windows 10 RedStone version, you can still can find driver from Windows update by "Search automatically for updated driver software":



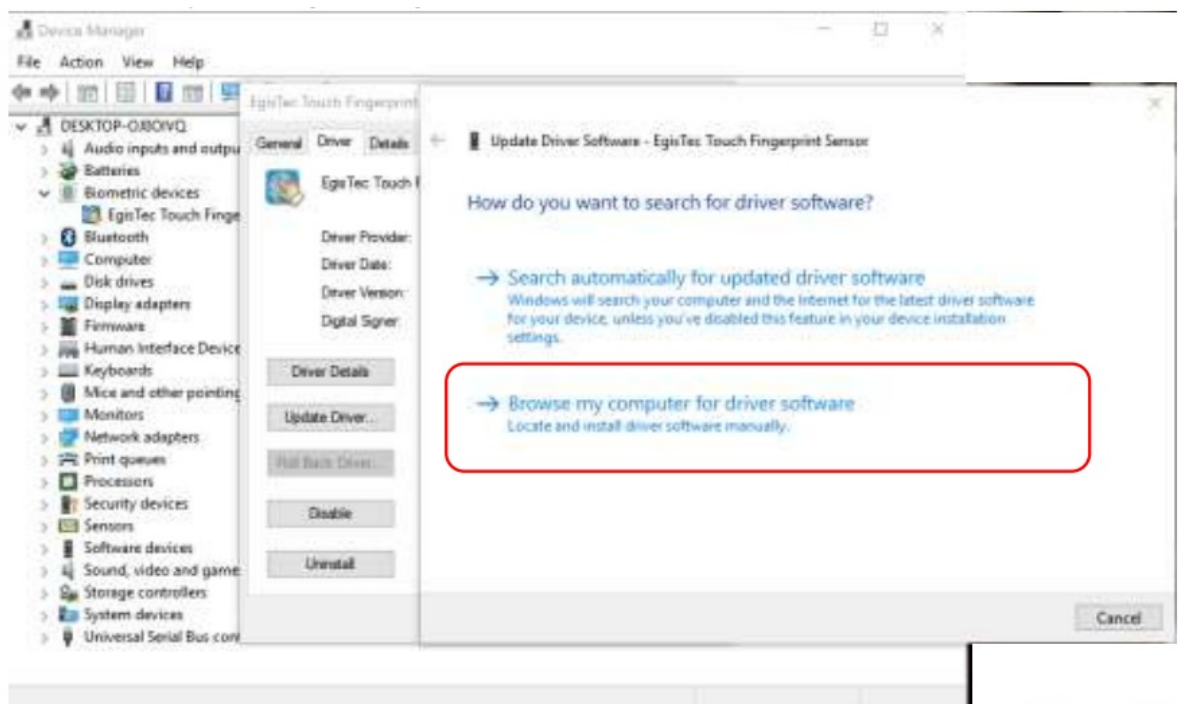
- Manually Driver installation (if it's necessary)
 - Download driver files from: http://authentrend.com/download/ATKey.Hello_WBFDriver3.5.2.2.zip
 - Download the driver and unzip it
 - Driver is INF base (not installation), please "install driver" from "device manager" "Biometric devices" to browser your driver folder to install
 - From device manager, find "Biometric devices" => "Egis EH570 sensor" with "!" mark



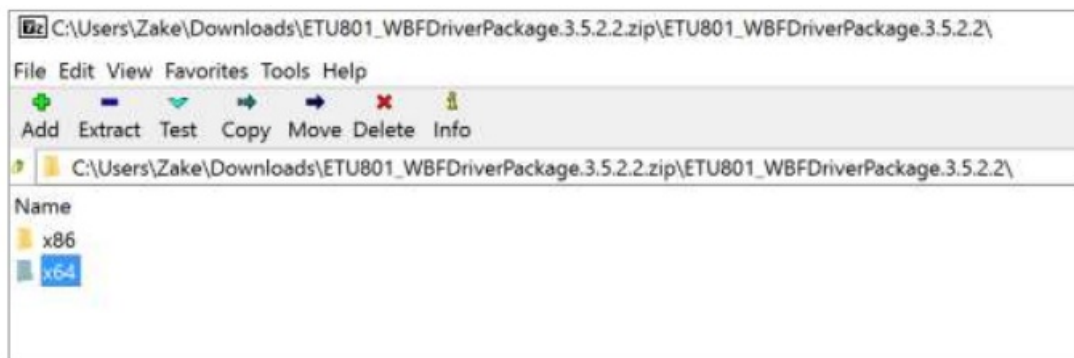
- Click the device, from pop up dialog, click “Update Driver” or “install driver”



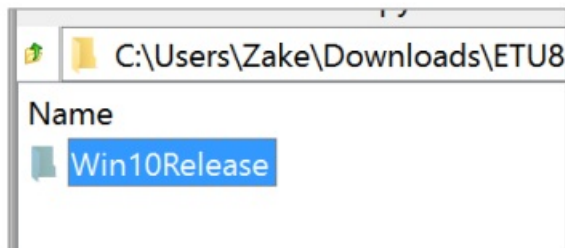
- Install driver by browsing the target folder



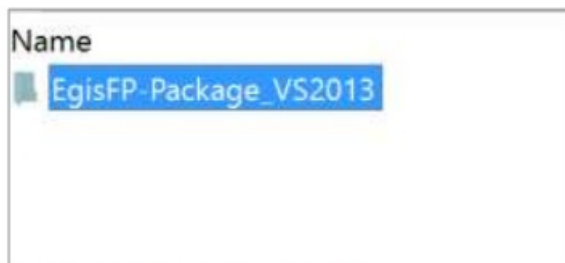
- Browse INF folder as below:



⇒ If you are x64 system



⇒ Win10Release sub-folder



⇒ INF is inside this sub-folder

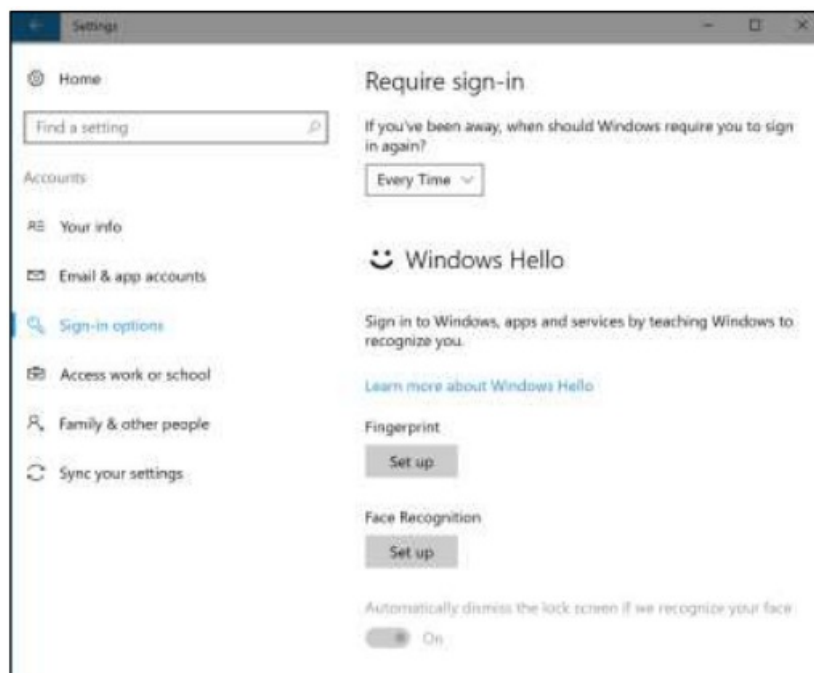
But since we insert “Scheduler” in by registry keys, please “reboot” system to make those “run once” effective!

Start your Fingerprint to Windows Hello

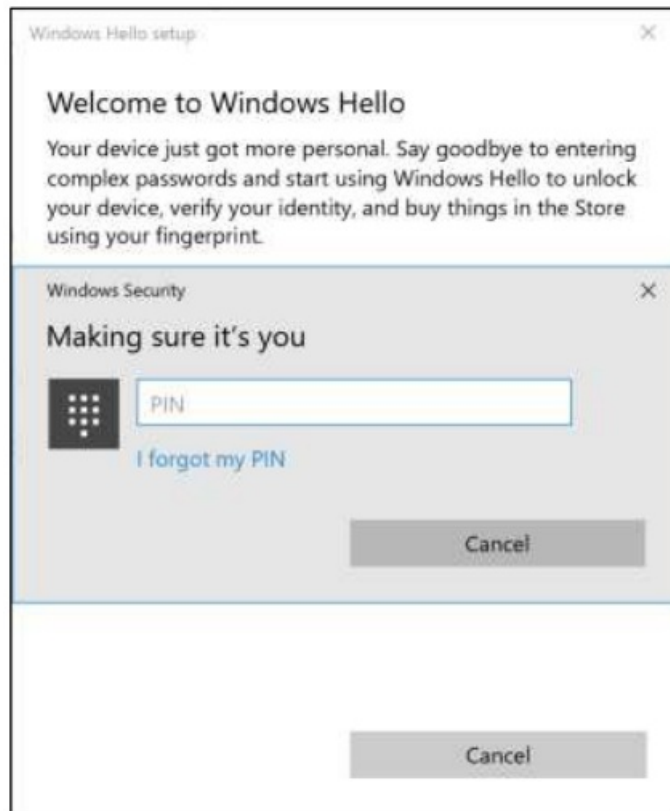
1. Start from “Settings” => “Accounts”



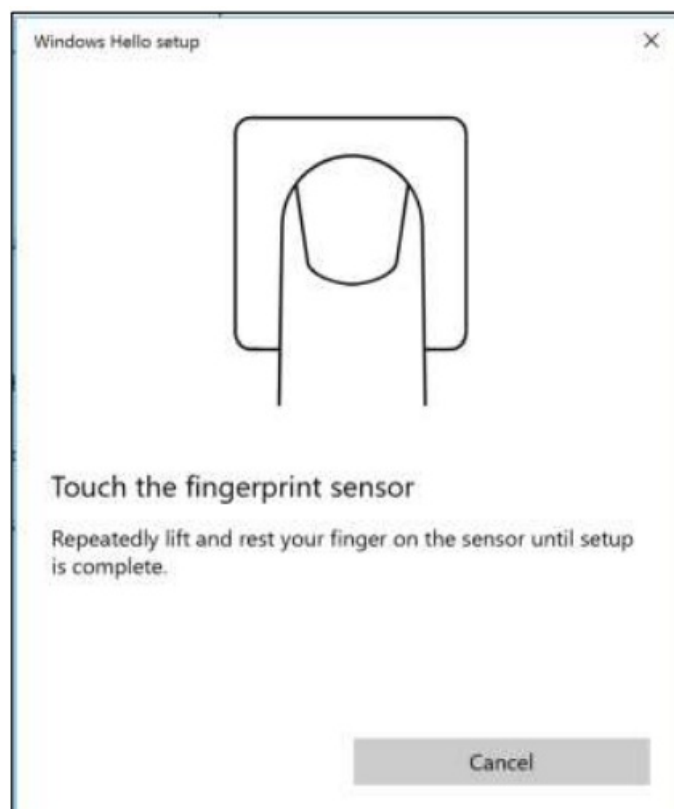
2. "Sign-in Options", Fingerprint "Setup"



3. Need PIN code first; if you did not setup PIN code yet, Windows Hello will guide you to setup it



4. Enroll and Register your fingerprint



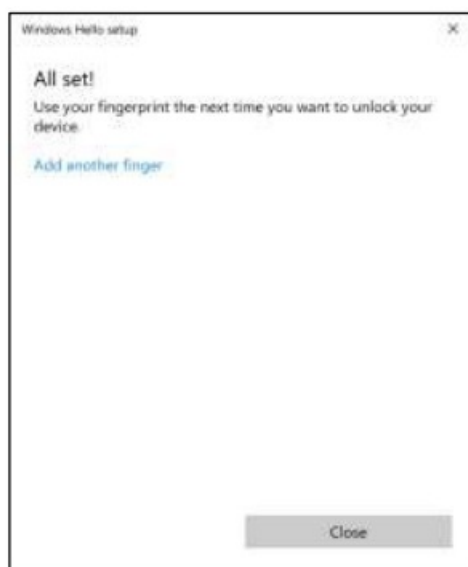
- please pay attention to "LED" of ATKey.Hello dongle
 - **Flashing Blue:** touch your fingerprint
 - **Green:** enroll fingerprint success / fingerprint matching
 - **Red:** enroll fingerprint fail / wrong fingerprint
 - **Blue:** dongle is ready

5. It needs around 10 ~ 12 enrollments, following or dongle LED or the GUI instructions (touch, lift) to enroll.

Tip: try to enroll (touch) your finger by different area, not always touch by same finger area.



6. All Set. We will recommend you to register at least 2 fingers for the account, and you also can register different finger for different account

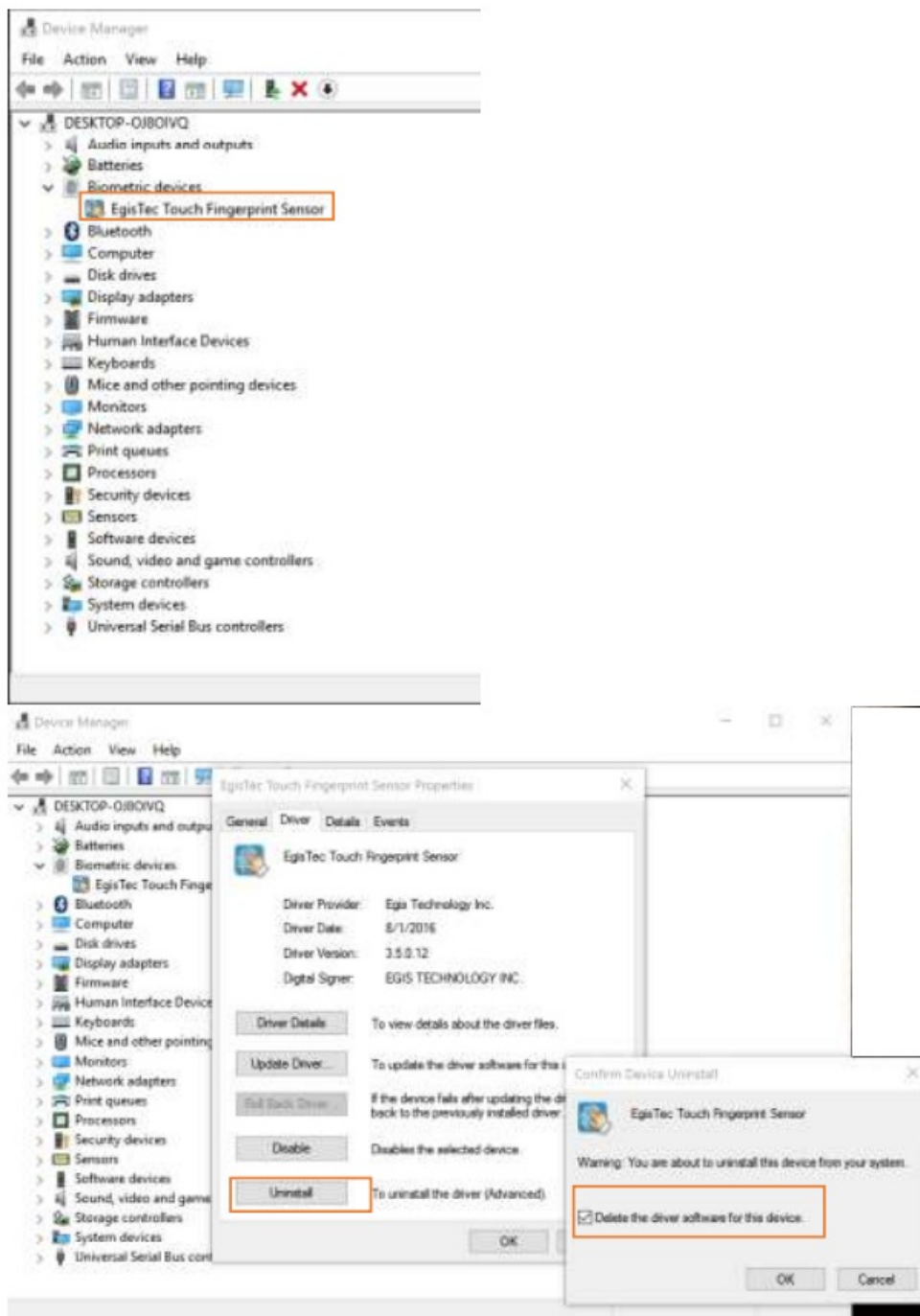


LED

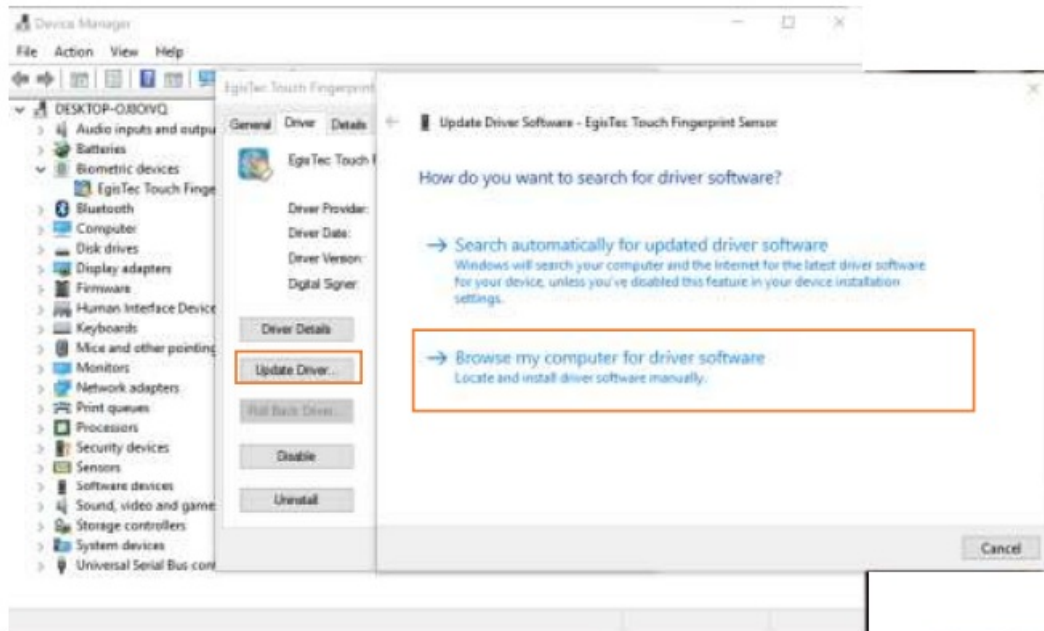
When the LED is flashing blue, that means Windows requests you fingerprint verification, so just touch your registered finger to login; at the touch, if LED shows Green, it matched; if LED shows Red, that means fingerprint not matching, so please try again or touch by right finger.

If you already installed previous version drivers

- a. Uninstall driver first



- b. Upgrade by INF (following Windows Hello Validation requirement)



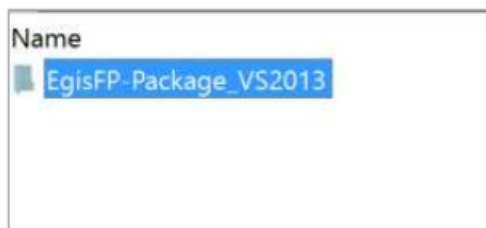
- ⇒ download the driver ZIP and unzip it to the specific folder
- ⇒ Browse to the folder



- ⇒ If you are x64 system



- ⇒ Win10Release sub-folder



- ⇒ INF is inside this sub-folder

- C But since we insert "Scheduler" in by registry keys, please "reboot" system to make those "run once" effective!

Documents / Resources



[AUTHENTREND Hello Dongle Touch Base Fingerprint USB Dongle](#) [pdf] User Guide
Hello Dongle Touch Base Fingerprint USB Dongle, Hello Dongle, Touch Base Fingerprint USB
Dongle, Fingerprint USB Dongle, USB Dongle