




AUTHENTREND BLC-622A1 ATKey.Hello Fingerprint USB Dongle User Guide

[Home](#) » [AUTHENTREND](#) » AUTHENTREND BLC-622A1 ATKey.Hello Fingerprint USB Dongle User Guide 

AUTHENTREND

Authentrend ATKey.Hello (Hello Dongle) and TypeC, touch base Fingerprint USB dongle
(WBF driver WHQL certified, ready on Windows Update)




AUTHENTREND
-The trend of Authentication-

ATKEY.Hello





Windows Hello

Fingerprint USB dongle
Designed for **Windows Hello**



Windows Hello fingerprint sign-in


Fast and password-free.
With Windows Hello, you can sign-in into your Windows devices in less than 2 seconds –that's 3 times faster than a password that you have to remember and type in. Windows Hello uses your fingerprint to recognize you instantly.

 360° Touch	 Multi fingers
 Instant match	 Smart learning

• USB 2.0 interface
• Weight/ 5g

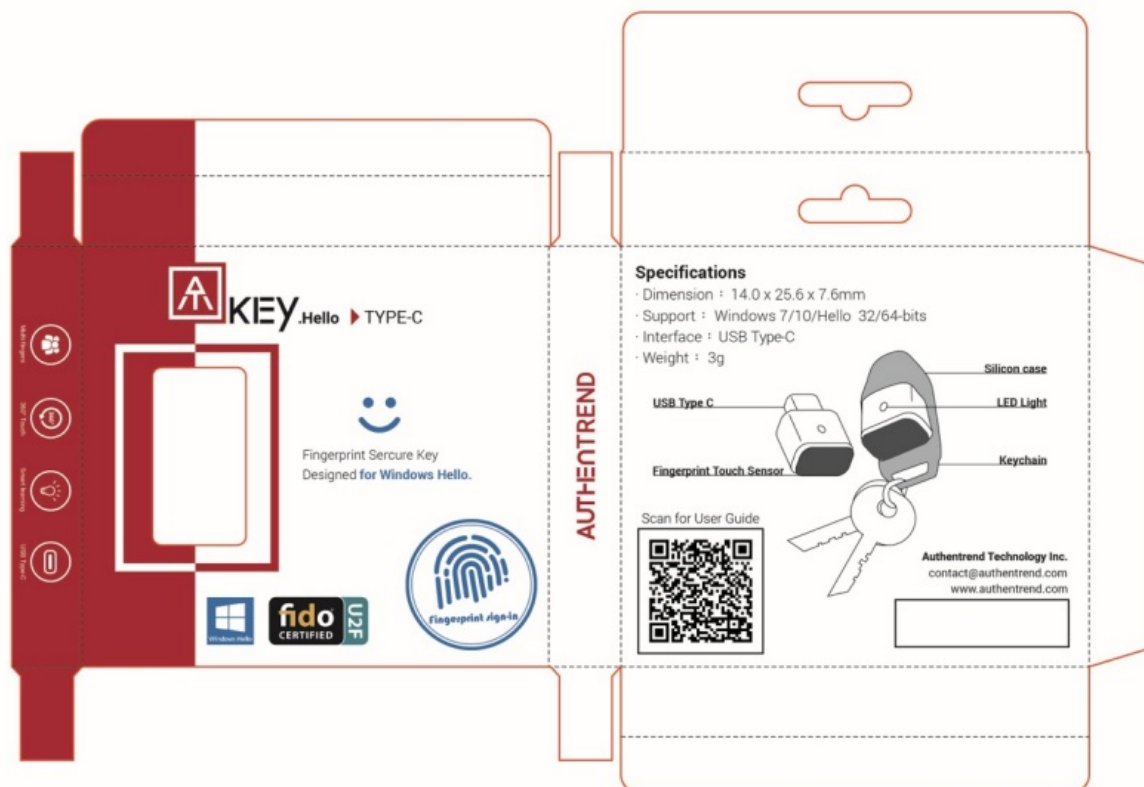
• Dimension/ 20.6 x 14 x 8 mm
• Support Windows 10 32/64-bits

Scan for User Guide



Authentrend Technology Inc.
contact@authentrend.com
www.authentrend.com

ATKey.Hello



key.Hello TypeC



There are some FAKE fingerprint dongles copied our design and even driver, and we won't support those dongles; if you find your dongle has no "AT" logo, or it can't download driver with automatic installation from Windows Update, it should be a fake one; please mail to contact@authentrend.com for more details.



key. Hello only supports Windows 10 32/64-bits OS.

For the first-time user

(go to the next section if you ever installed the previous key.Hello driver)

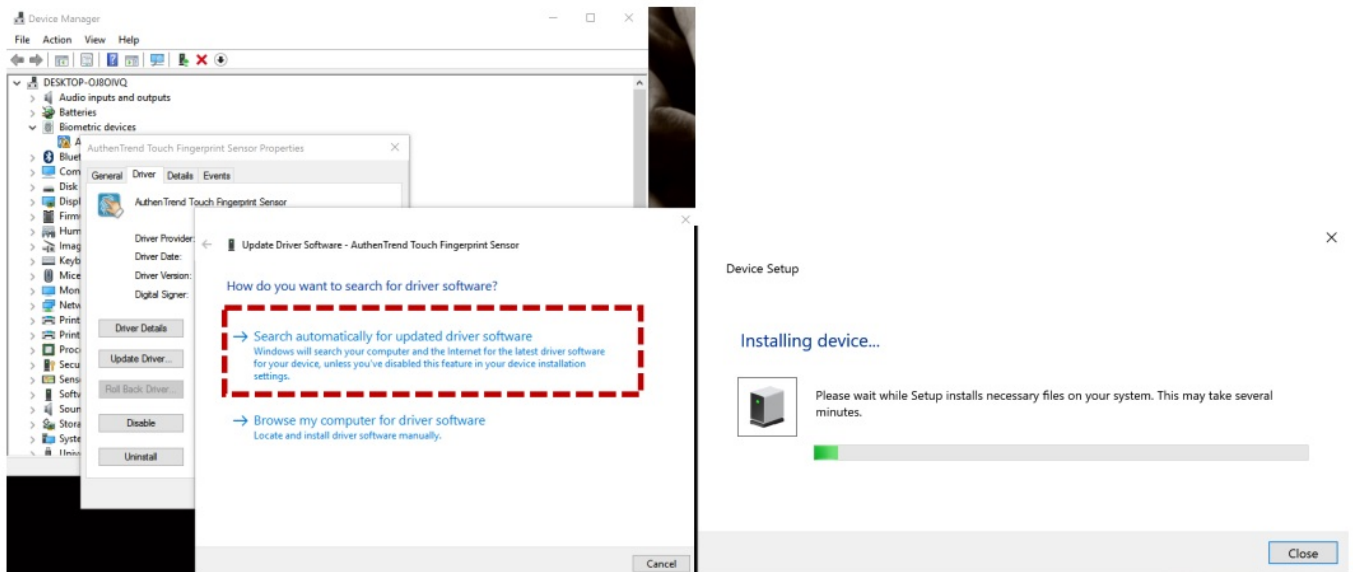
Contents

- 1 Install driver
- 2 Manually Driver installation (if it's necessary)
- 3 Start your Fingerprint to Windows Hello:
- 4 LED
- 5 Already installed any previous version drivers
 - 5.1 Driver update
- 6 Starting U2F by ATKey.Hello or ATKey.Hello TypeC
- 7 Documents / Resources
 - 7.1 References
- 8 Related Posts

Install driver

- Insert key. Hello dongle to available USB port
 - o If your OS is Windows 10 RedStone 1 version (build 1607, upgrade after 2016.08) and connects to the internet, it will install the driver from Windows update automatically when you insert your dongle.

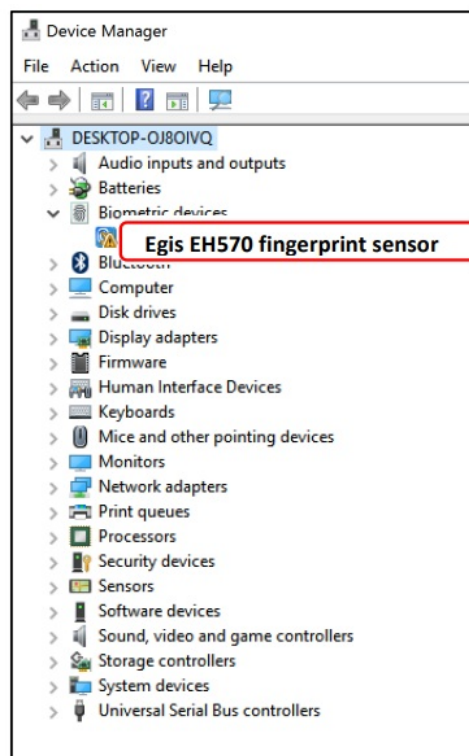
o If your OS is NOT upgraded to Windows 10 RedStone 1 version, you can still find the driver from Windows update by “Search automatically for updated driver software.”



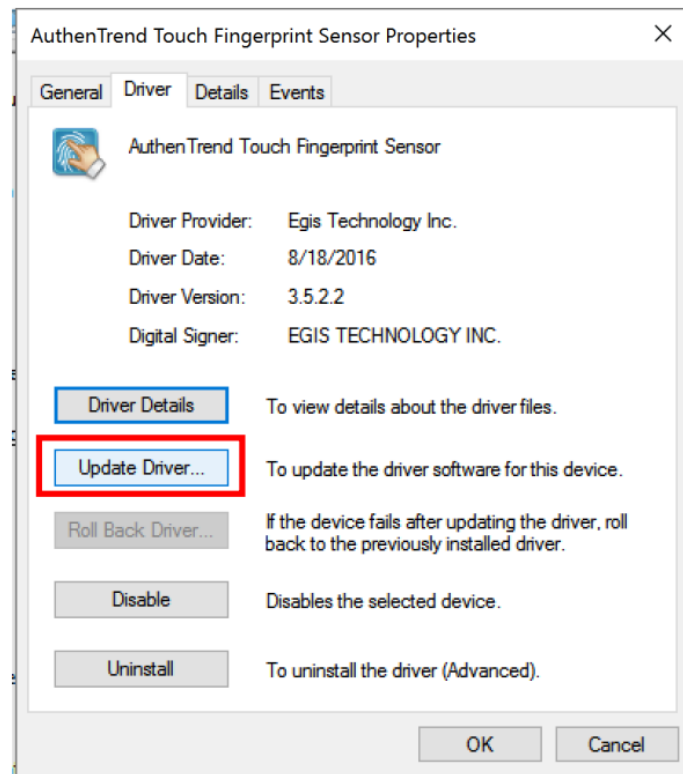
- Jump to 3. Start your Fingerprint on Windows Hello after installation.

Manually Driver installation (if it's necessary)

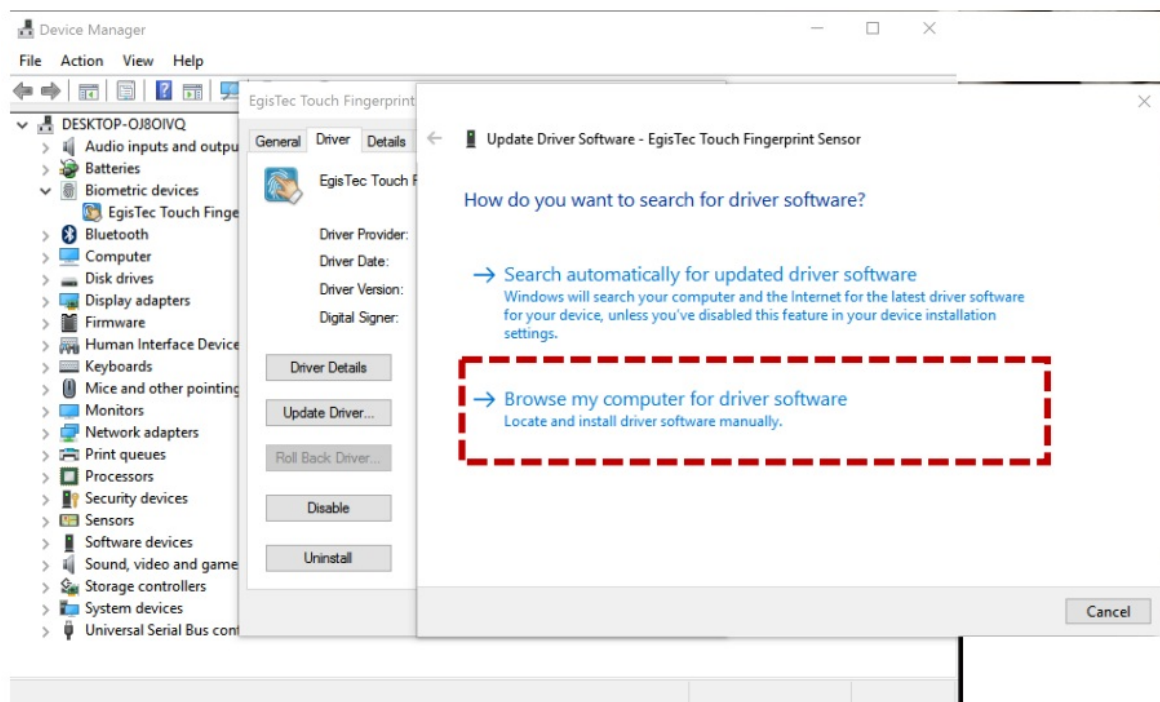
- Download the driver: https://authentrend.com/wp-content/uploads/2016/05/ATKey.Hello_3.5.2.11_win10_rs3_wbf_whql.zip
- The driver is INF base (not installation). Please install the driver from “device manager” > “Biometric devices” to browse your driver folder to install.
- From Device Manager, find “Biometric devices” > “Egis EH570 sensor” and click.



- From the pop-up dialog, click “Update Driver” or “Install Driver”



- Install the driver by browsing the target folder



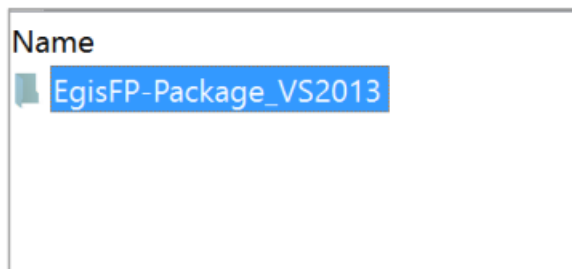
- Browse INF folder as below:



⇒ If you are x64 system



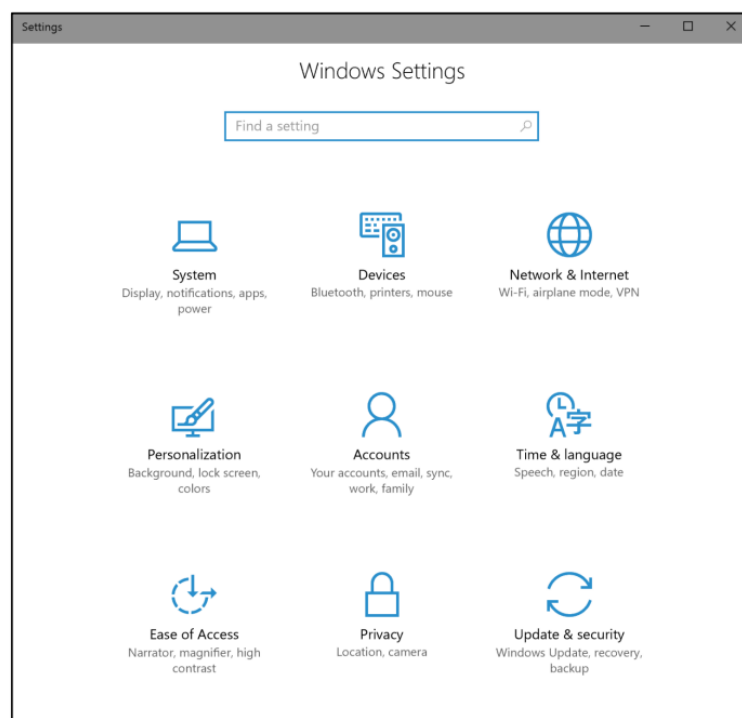
⇒ Win10Release sub-folder



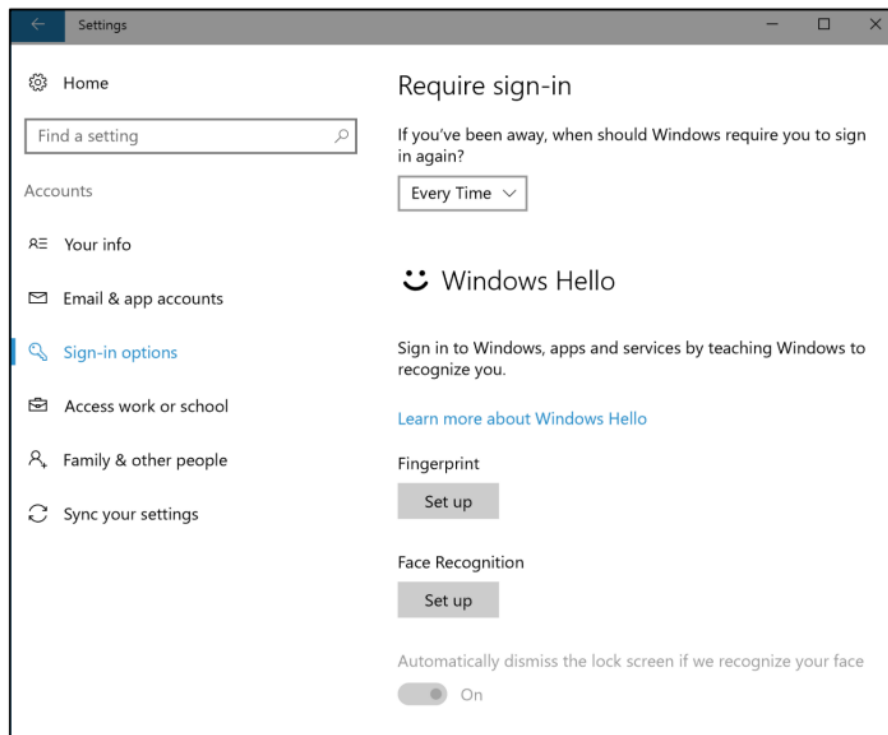
⇒ INF is inside this sub-folder

- Since we insert “Scheduler” in by registry keys, please “reboot” the system to make those “run once” effective!

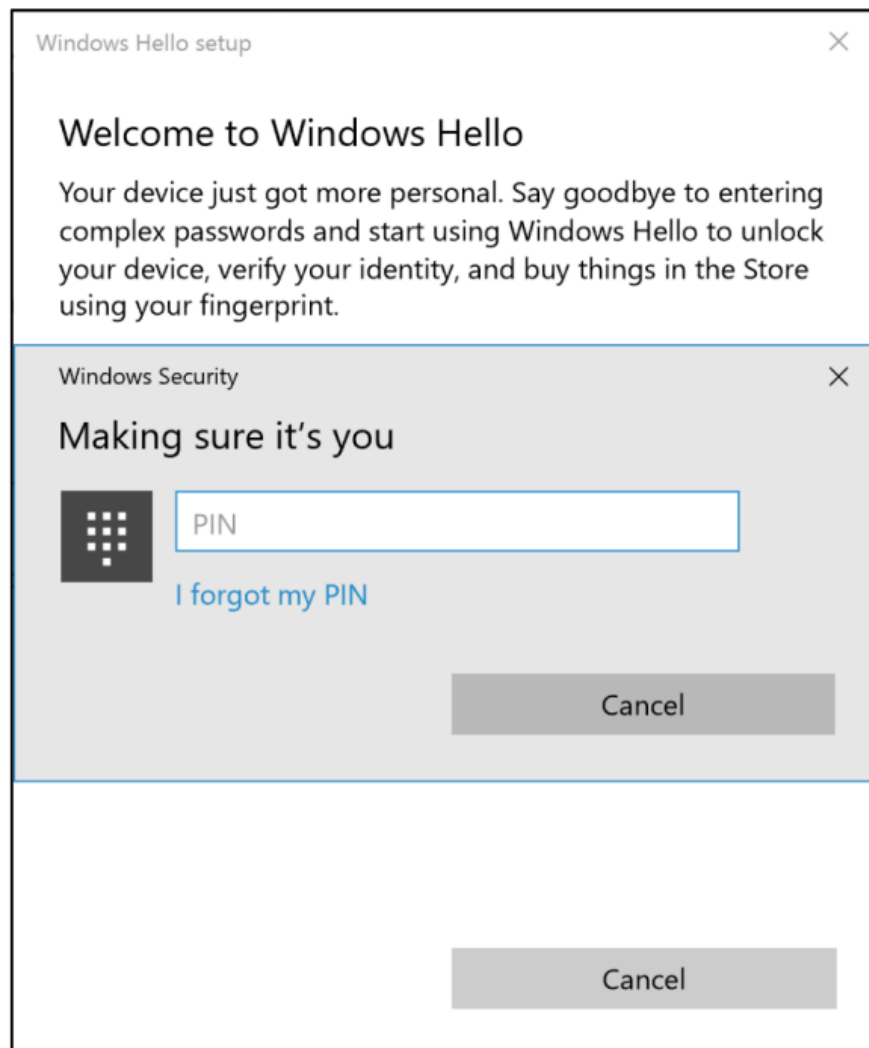
Start your Fingerprint to Windows Hello:



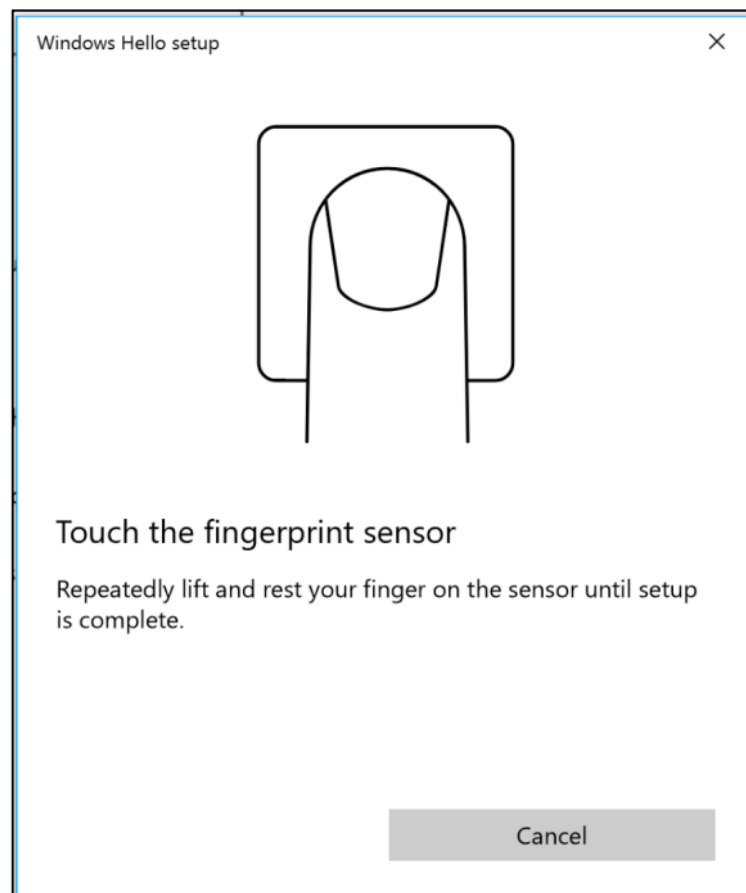
1. Start from “Settings” > “Accounts”



2. “Sign-in Options” > “Fingerprint”: “Setup”



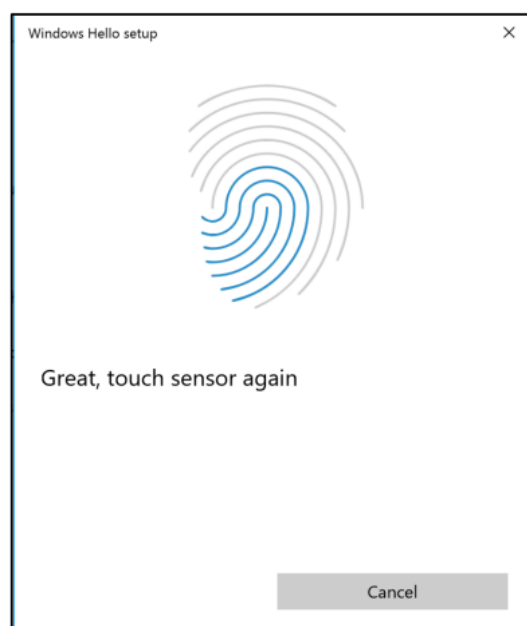
3. Type your PIN code first. If you did not set the PIN code yet, Windows Hello will guide you to set it up.



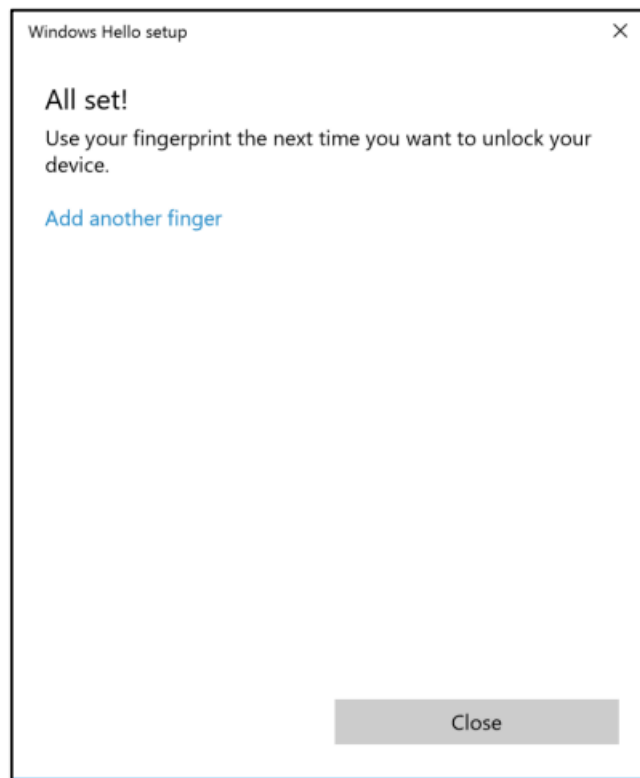
4. Enroll and Register your fingerprint

* Please pay attention to the "LED" of ATKey.Hello dongle

- Flashing Blue: touch your fingerprint, when Green or RED LED shows, lift your finger from the dongle
- Green: enroll fingerprint success, please lift your finger from dongle
- Red: enroll fingerprint fail, or always register same fingerprint area; please lift your finger, touch to register again but by different fingerprint area of the registered finger
- Blue: enroll and register fingerprint done, please also pay attention to Windows GUI to confirm it



5. It needs around 10 ~ 12 enrollments, following or dongle LED or the GUI instructions (touch, lift) to enroll.
Tip: try to enroll (touch) your finger in different areas, not always touched by the same finger area.



6. All Set. We will recommend you to register at least 2 fingers for the account, and you also can register different fingers for different account

LED

	Blue LED ON		Power ON
	Green LED ON		Fingerprint verification success
	Red LED ON		Fingerprint verification fail
	Blue LED flashes		Need to verify fingerprint

- When the LED flashes **BLUE**, that means Windows requests you fingerprint verification. Touch your registered finger to log in.
- Fingerprint verified if LED shows **Green**.
- If LED shows **Red**, that means fingerprint verification fails.

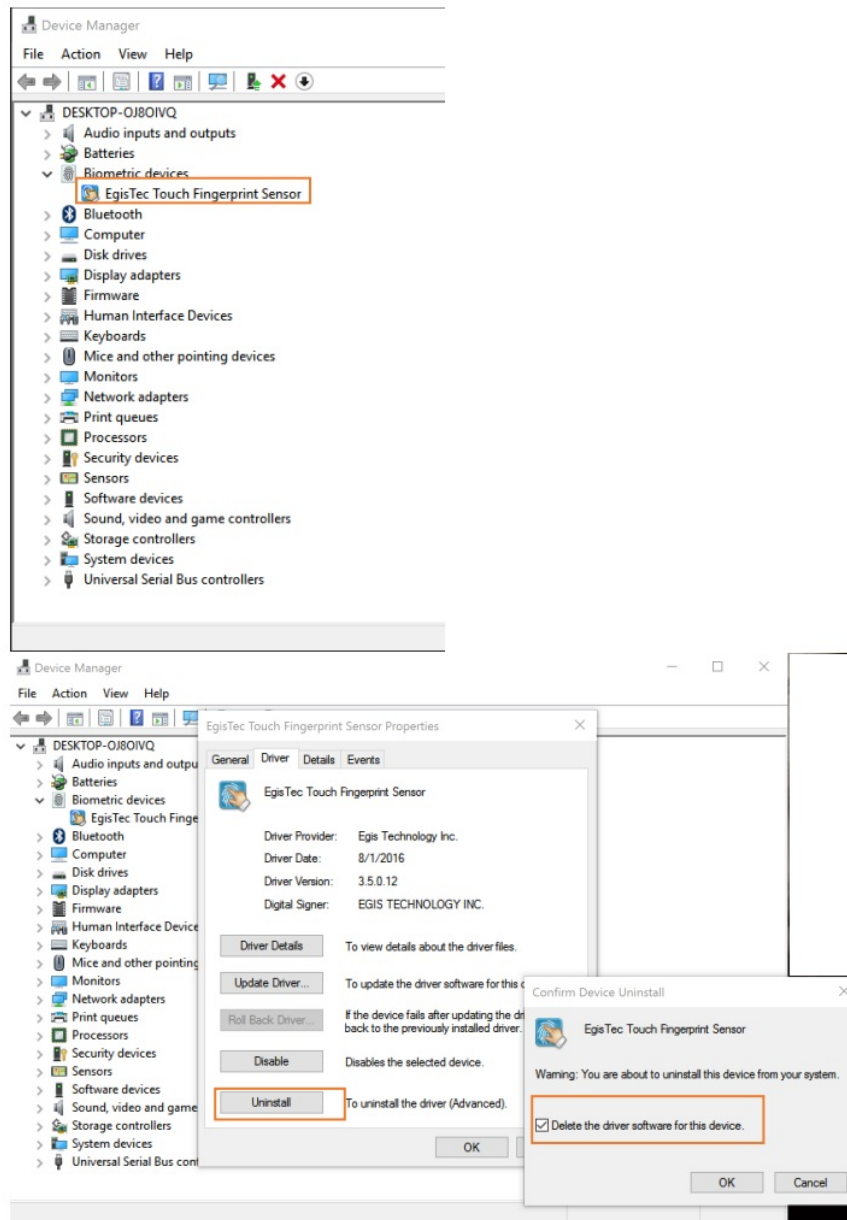
Windows Hello only allows 3 times fingerprint matching, so if you fail fingerprint logon 3 times (RED LED), please switch to PIN code to log in.

*From Driver 3.5.2.6, we implemented "InstantGo" in, fingerprint sensor will get into standby mode after 10 sec without any actions (LED is static blue instead of continuous flashing). However, the user can still touch the sensor to wake up it for Fingerprint authentication to log on.

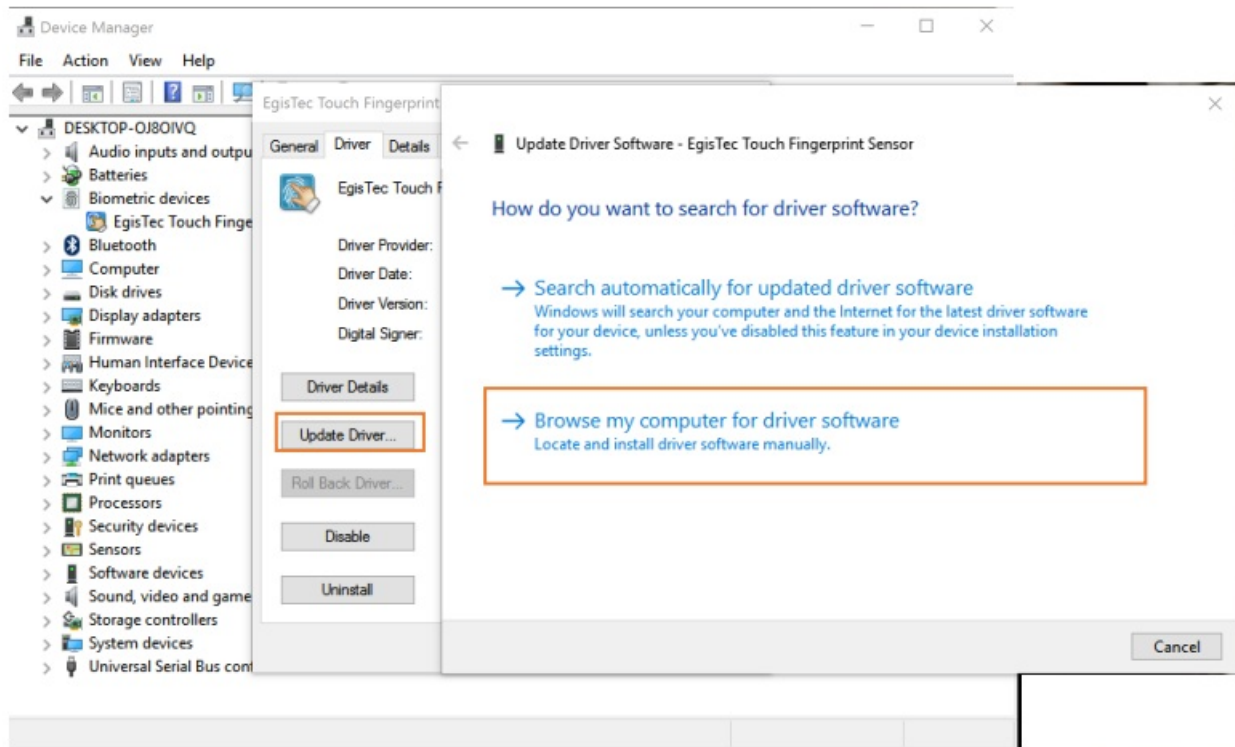
Already installed any previous version drivers

Driver update

1. Uninstall driver first



2. Upgrade by INF (following Windows Hello Validation requirement)

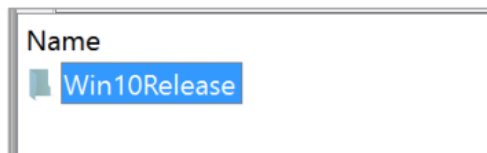


download the driver ZIP and unzip it to the specific folder

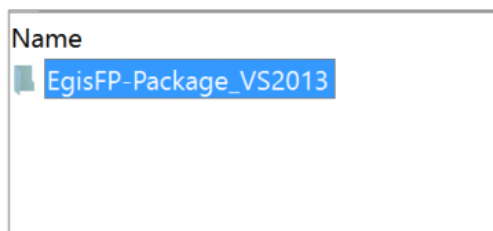
Browse to the folder



⇒ If you are x64 system



⇒ Win10Release sub-folder



⇒ INF is inside this sub-folder

3. But since we insert "Scheduler" in by registry keys, please "reboot" the system to make those "run once" effective!

Starting U2F by ATKey.Hello or ATKey.Hello TypeC

1. Both products are FIDO U2F certified, you can find it from the fido web site:

<https://fidoalliance.org/certification/fido-certified-products/>

2. Please download "U2F Plug-in for Windows" to install it first:

https://authentrend.com/download/ATKeyU2FPlug-in_Setup.zip

You also can learn some ideas for this “U2F Plug-in” from below web site:

<https://authentrend.com/atkeyu2fplugin/>


3. After installation, you can start to enable U2F from the web service and register key.Hello as security key as fingerprint enabled 2 factor
4. Since this is Windows Hello base USB dongle, you need to install U2F Plug-in to nd






Windows Hello Validated
FIDO U2F certified (U2F plug-in)
Support Server Matching SDK for Enterprise 2FA integrations

Fingerprint sensor	Egis ET320 area sensor
Interface	USB 2.0
Dimension	14.2 x 8.0 x 20.4 mm
Weight	3g
O.S.	Windows 10 32/64-bits Windows 7 32/64-bits
FAR/FOR	< 0.002% / < 3%
Fingers	Multiple fingers
Matching response time	< 1 sec
Others	Smart Learning a_ 360 degrees matching

Documents / Resources

	<p>AUTHENTREND BLC-622A1 ATKey.Hello Fingerprint USB Dongle [pdf] User Guide BLC-622A1, ATKey.Hello Fingerprint USB Dongle</p>
---	--

References

-  [Home - AuthenTrend Technology Inc.](#)
-  [ATKey.Card - AuthenTrend Technology Inc.](#)
-  [FIDO® Certified - FIDO Alliance](#)