



# AUTHENTREND ATKeyPro USB Type-A Nano Security Key User Guide

[Home](#) » [AUTHENTREND](#) » [AUTHENTREND ATKeyPro USB Type-A Nano Security Key User Guide](#) 

## Contents

- [1 AUTHENTREND ATKeyPro USB Type-A Nano Security Key](#)
- [2 Already installed any previous version drivers](#)
  - [2.1 Driver update](#)
- [3 Documents / Resources](#)
  - [3.1 References](#)
- [4 Related Posts](#)

# AUTHENTREND

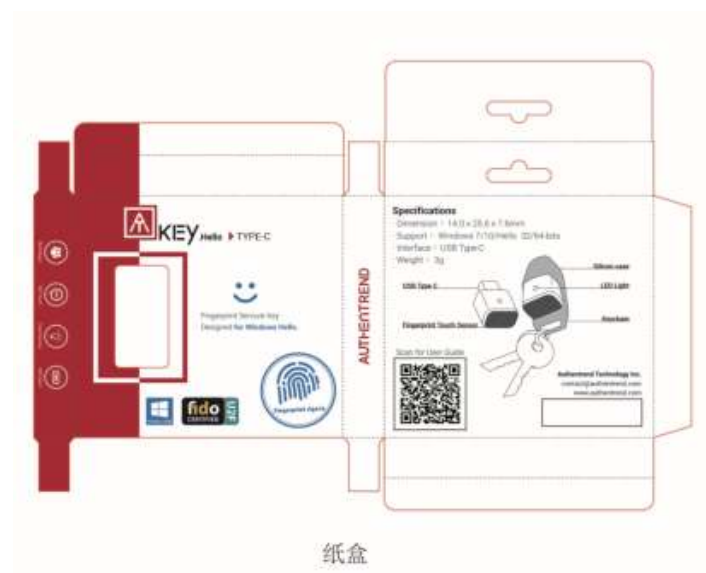
## AUTHENTREND ATKeyPro USB Type-A Nano Security Key



Authen Trend AT Key. Hello (Hello Dongle) and Type, touch base Fingerprint USB dongle (WBF driver WHQL certified, ready on Windows Update)



## AT Key. Hello



## AT Key. Hello Type

There are some FAKE fingerprint dongles copied our design and even driver, and we won't support those dongles; if you find your dongle has no "AT" logo, or it can't download driver with automatic installation from Windows Update, it should be a fake one; please mail to [contact@authentrend.com](mailto:contact@authentrend.com) for more details.

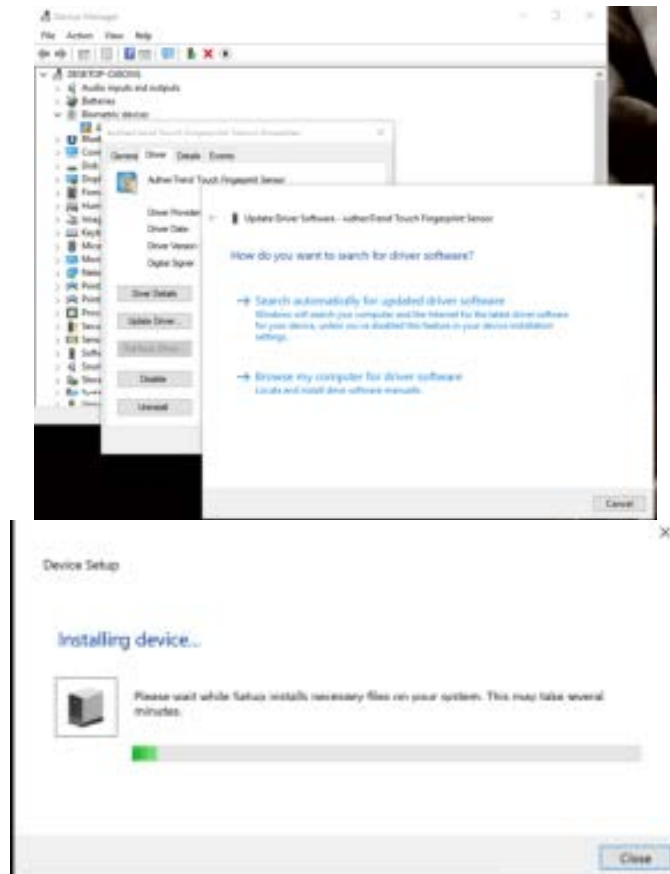
AT Key. Hello only supports Windows 10 32/64-bits OS.

## For the first-time user

(go to the next section if you ever installed previous AT Key. Hello driver)

### 1. Install driver

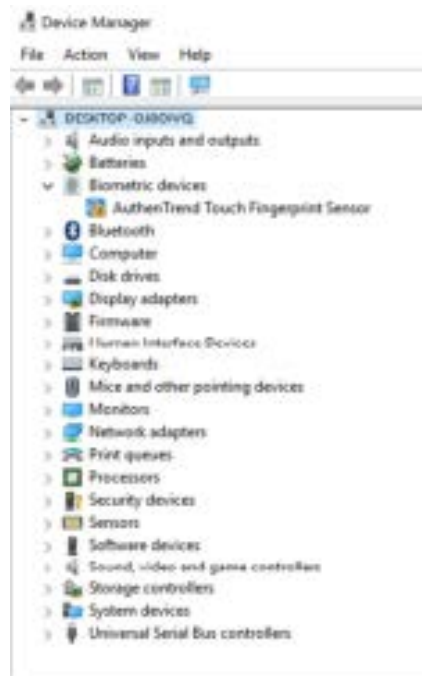
- Insert AT Key. Hello dongle to available USB port
  - If your OS is Windows 10 Redstone 1 version (build 1607, upgrade after 2016.08) and connects to the internet, it will install the driver from Windows update automatically when you insert your dongle.
  - If your OS is NOT upgrade to Windows 10 Redstone 1 version, you can still find the driver from Windows update by “Search automatically for updated driver software.”



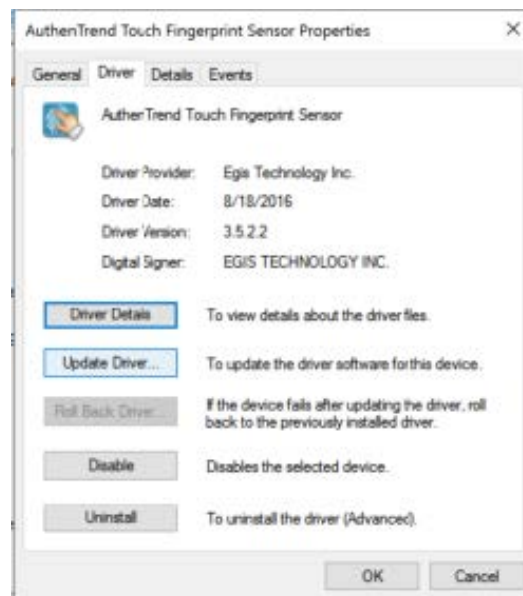
- Jump to 3. Start your Fingerprint on Windows Hello after installation.

### 2. Manually Driver installation (if it's necessary)

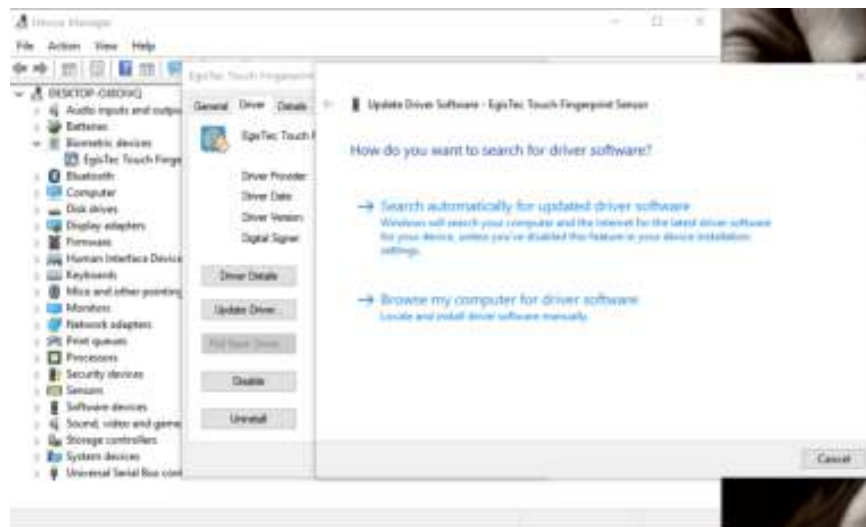
- Download the driver: [https://authentrend.com/wp-content/uploads/2016/05/ATKey.Hello\\_3.5.2.11\\_win10\\_rs3\\_wbf\\_whql.zip](https://authentrend.com/wp-content/uploads/2016/05/ATKey.Hello_3.5.2.11_win10_rs3_wbf_whql.zip)
- Driver is INF base (not installation). Please install driver from “device manager” > “Biometric devices” to browse your driver folder to install.
- From Device Manager, find “Biometric devices” > “Egis EH570 sensor” and click.



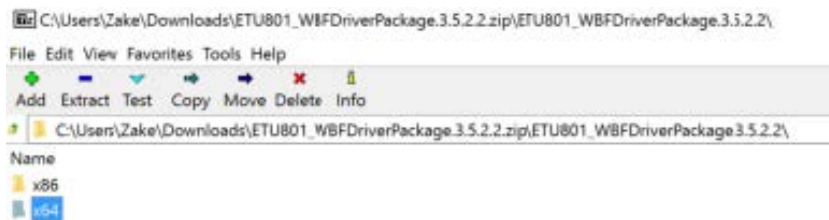
- From the pop-up dialog, click “Update Driver” or “Install Driver”



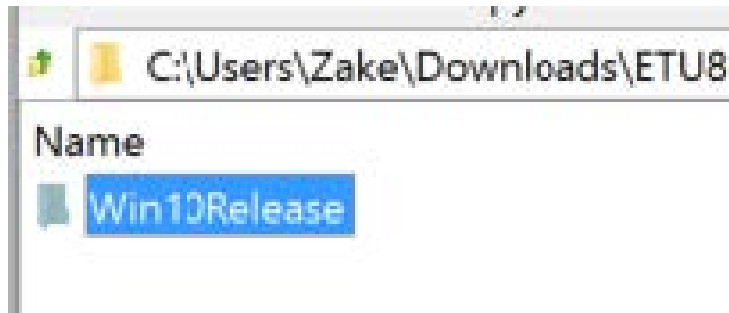
- Install driver by browsing the target folder



- Browse INF folder as below:



- If you are x64 system



- Win10 Release sub-folder



INF is inside this sub-folder

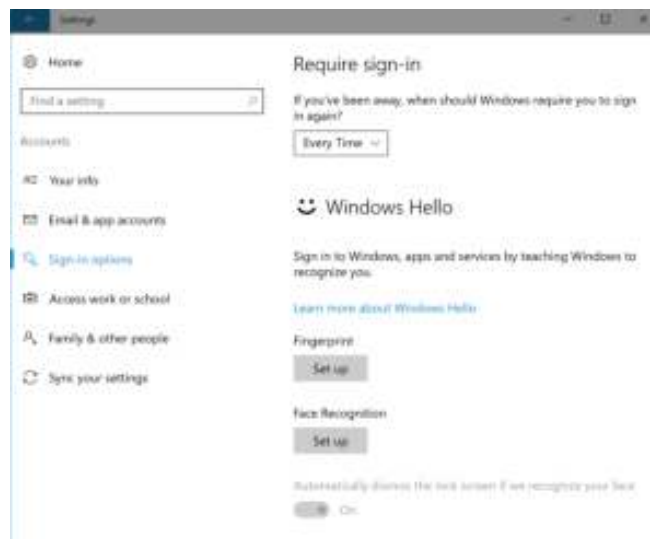
- Since we insert "Scheduler" in by registry keys, please "reboot" system to make those "run once" effective!

### 3. Start your Fingerprint to Windows Hello:

1. Start from "Settings" > "Accounts"



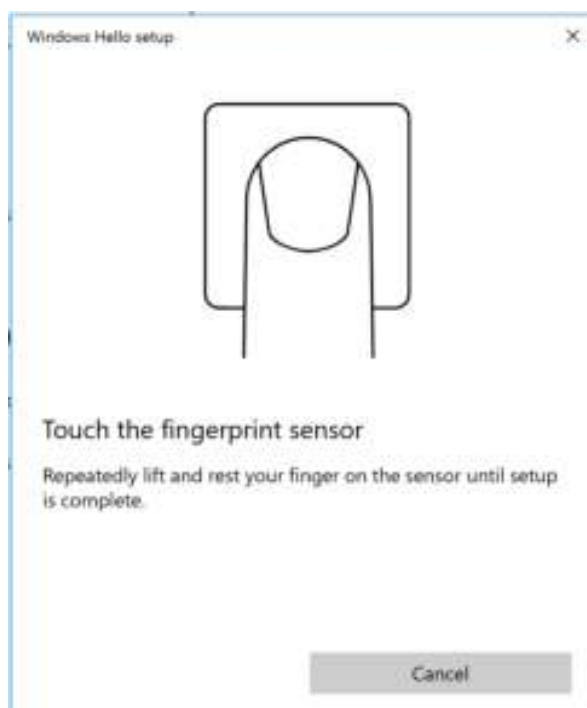
2. "Sign-in Options" > "Fingerprint": "Setup"



3. Type your PIN code first. If you did not set the PIN code yet, Windows Hello will guide you to set it up.



4. Enroll and Register your fingerprint



1. \* please pay attention to "LED" of AT Key. Hello dongle

- **Flashing Blue:** touch your fingerprint, when Green or RED LED shows, lift your finger from dongle
  - **Green:** enroll fingerprint success, please lift your finger from dongle
  - **Red:** enroll fingerprint fail, or always register same fingerprint area; please lift your finger, touch to register again but by different fingerprint area of the register finger
  - **Blue:** enroll and register fingerprint done, please also pay attention to Windows GUI to confirm it
5. It needs around 10 ~ 12 enrollments, following or dongle LED or the GUI instructions (touch, lift) to enroll.  
Tip: try to enroll (touch) your finger by different area, not always touch by same finger area.



6. All Set. We will recommend you to register at least 2 fingers for the account, and you also can register different finger for different account



#### 4. LED



1. When the LED flashes BLUE, that means Windows requests you fingerprint verification. Touch your registered finger to log in.
2. Fingerprint verified if LED shows Green.
3. If LED shows Red, that means fingerprint verification fails.

Windows Hello only allows 3 times fingerprint matching, so if you fail fingerprint login 3 times (RED LED), please switch to PIN code to log in.

\*From Driver 3.5.2.6, we implemented "Instant Go" in, fingerprint sensor will get into standby more after 10 sec without any actions (LED is static blue instead of continuous flashing). However, user can still touch the sensor to wake up it for Fingerprint authentication to login.

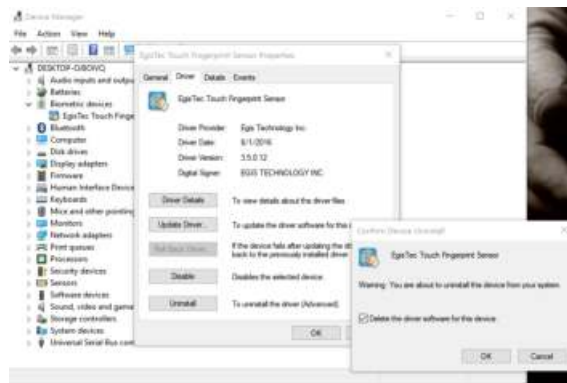
## Already installed any previous version drivers

### Driver update

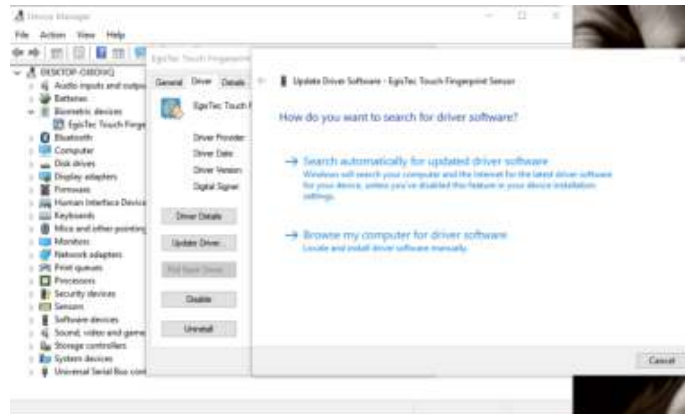
1. Uninstall driver first







## 1. Upgrade by INF (following Windows Hello Validation requirement)



- download the driver ZIP and unzip it to the specific folder
- Browse to the folder



- If you are x64 system



- Win10Release sub-folder



- INF is inside this sub-folder

2. But since we insert "Scheduler" in by registry keys, please "reboot" system to make those "run once" effective!

## 2. Starting U2F by AT Key. Hello or AT Key .Hello Type

- Both products are FIDO U2F certified, you can find it from Fido web site:

<https://fidoalliance.org/certification/fido-certified-products/>

2. Please download “U2F Plug-in for Windows” to install it first:

[https://authentrend.com/download/ATKeyU2FPlug-in\\_Setup.zip](https://authentrend.com/download/ATKeyU2FPlug-in_Setup.zip)


You also can learn some ideas for this “U2F Plug-in” from below web site:

<https://authentrend.com/atkey-u2fplugin/>




3. After installation, you can start to enable U2F from web service and register AT Key. Hello as security key as fingerprint enabled 2nd factor

4. Since this is Windows Hello base USB dongle, you need to install U2F Plug-in to

## Documents / Resources

	<p><a href="#">AUTHENTREND ATKeyPro USB Type-A Nano Security Key</a> [pdf] User Guide ATKeyPro, USB Type-A Nano Security Key, Nano Security Key, USB Type-A Security Key, Security Key, ATKeyPro</p>
---	--

## References

-  [Home - AuthenTrend Technology Inc.](#)
-  [ATKey.Card - AuthenTrend Technology Inc.](#)
-  [FIDO® Certified - FIDO Alliance](#)