



AUTEL TPMS Sensor MX Sensor User Manual

[Home](#) » [AUTEL](#) » AUTEL TPMS Sensor MX Sensor User Manual 

Contents

- [1 AUTEL TPMS Sensor MX Sensor](#)
- [2 Product Information](#)
 - [2.1 SAFETY INSTRUCTIONS](#)
 - [2.2 WARRANTY](#)
 - [2.3 EXPLODED VIEW OF SENSOR](#)
 - [2.4 INSTALLATION GUIDE](#)
- [3 Product Information](#)
 - [3.1 SAFETY INSTRUCTIONS](#)
 - [3.2 WARRANTY](#)
 - [3.3 EXPLODED VIEW OF SENSOR](#)
 - [3.4 INSTALLATION GUIDE](#)
- [4 Product Information](#)
 - [4.1 SAFETY INSTRUCTIONS](#)
 - [4.2 WARRANTY](#)
 - [4.3 EXPLODED VIEW OF SENSOR](#)
 - [4.4 INSTALLATION GUIDE](#)
- [5 Documents / Resources](#)
 - [5.1 References](#)
- [6 Related Posts](#)



AUTEL TPMS Sensor MX Sensor



Product Information



Take 433MHz sensor as an example in this manual

CAUTION:

- Autel MX-Sensors arrive blank and must be programmed with Autel TPMS tool, which recommended to

program prior to installation.

- Do not race with the vehicle on which the Clamp-in MX-Sensor is mounted, and always keep the drive speed under 240km/h.

SAFETY INSTRUCTIONS

Before installing the sensor, read the installation and safety instructions carefully. For reasons of safety and for optimal operation, we recommend that any maintenance and repair work be carried out by trained experts only, in accordance with the guidelines of the vehicle manufacturer. The valves are safety-relevant parts which are intended for professional installation only. Failure to do so may result in the failure of the TPMS sensor. AUTEL does not assume any liability in case of faulty or incorrect installation of the product.

CAUTION

- The TPMS sensor assemblies are replacement or maintenance parts for vehicles with factory installed TPMS.
- Make sure to program the sensors by AUTEL sensor programming tools by the specific vehicle make, model and year before installation.
- Do not install programmed TPMS sensors in damaged wheels.
- In order to guarantee optimal function, the sensors may only be installed with original valves and accessories provided by AUTEL. Upon completing the installation, test the vehicle's TPMS following the procedures described in the original manufacturer's user guide to confirm proper installation.

WARRANTY

AUTEL guarantees that the sensor is free from material and manufacturing defects for a period of twenty-four (24) months or for 25,000 miles, whichever comes first. AUTEL will at its discretion replace any merchandise during the warranty period.

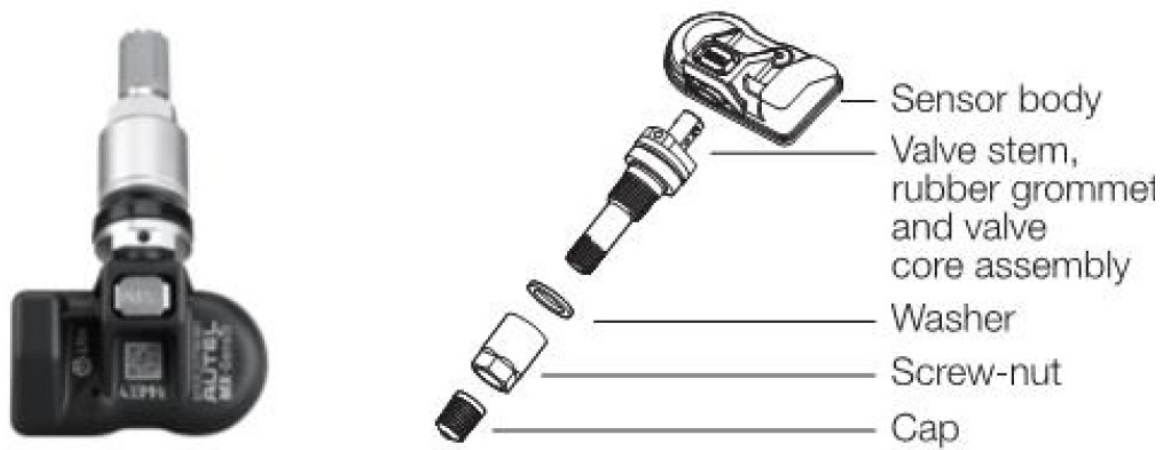
The warranty shall be void if any of the following occurs:

1. Improper installation of products
2. Improper usage
3. Induction of defect by other products
4. Mishandling of products
5. Incorrect application
6. Damage due to collision or tire failure
7. Damage due to racing or competition
8. Exceeding specific limits of the product

EXPLODED VIEW OF SENSOR

CAUTION: Each time a tire is serviced or dismounted, or if the sensor is removed or replaced, it is mandatory to replace the rubber grommet, washer, nut and valve core with our parts to ensure proper sealing. It is mandatory to replace the sensor if it is externally damaged.

Correct sensor nut torque: 4 Newton-meters.



Weight of sensor without valve	12 g
Dimensions	approx. 42.2*27.9*17.4mm
Max. pressure range	800 kPa

INSTALLATION GUIDE

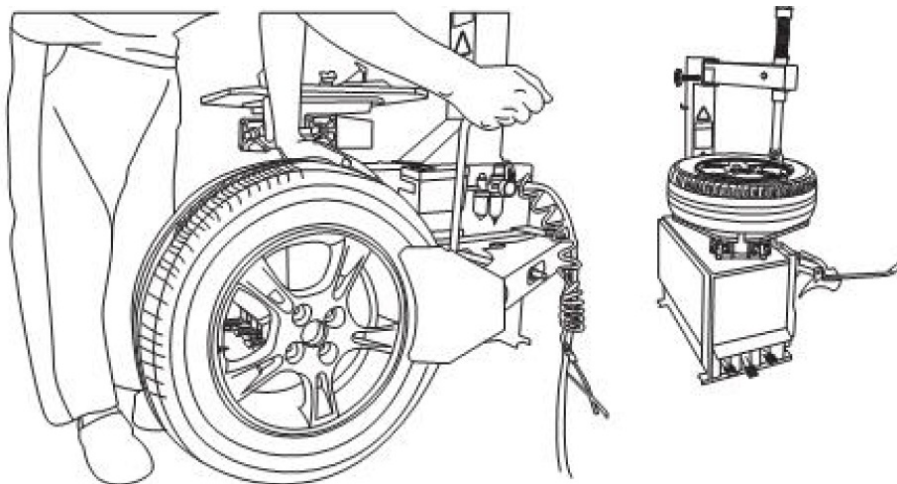
IMPORTANT: Before operating or maintaining this unit, please read these instructions carefully and pay extra attention to the safety warnings and precautions. Use this unit correctly and with care. Failure to do so may cause damage and/or personal injury and will void the warranty.

1. Loosening the tire

Remove the valve cap and core and deflate the tire.

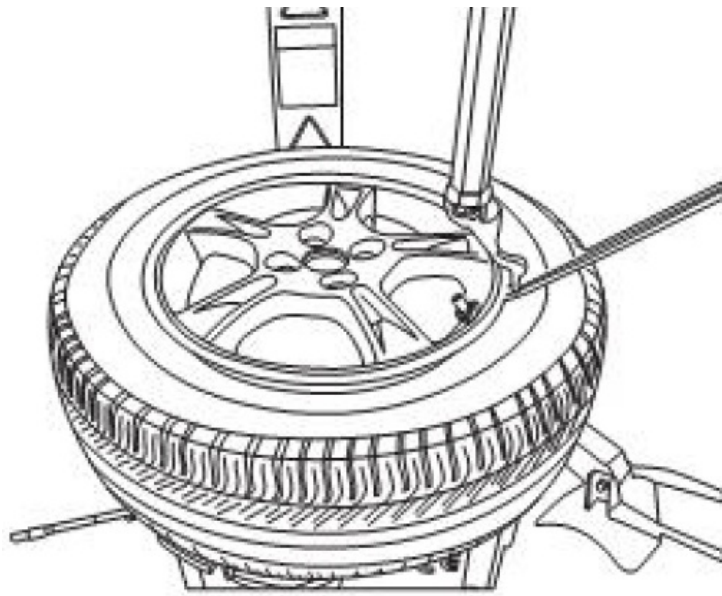
Use the bead loosener to unseat the tire bead.

CAUTION: The bead loosener must be facing the valve.



2. Dismounting the tire

Clamp the tire onto the tire changer, and adjust the valve at 1 o'clock relative to the tire separation head. Insert the tire tool and lift the tire bead onto the mounting head to dismount the bead.



CAUTION:

This starting position must be observed during the whole dismounting process.

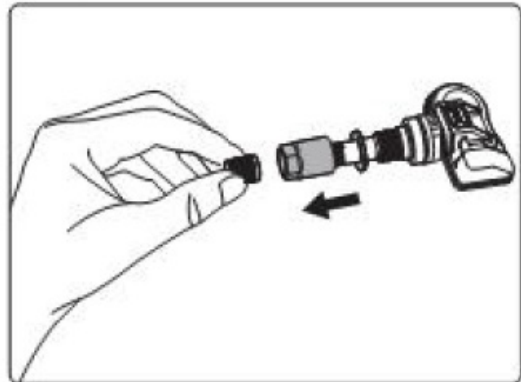
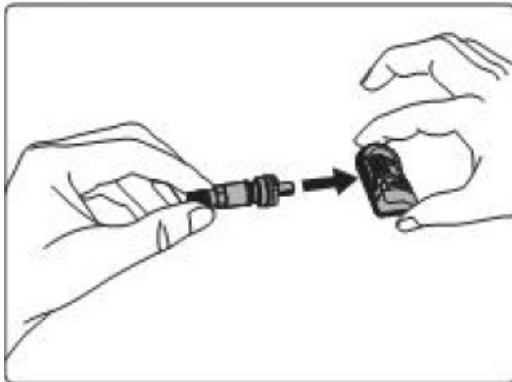
3. Dismounting the sensor

Remove the cap, screw nut, and washer from the valve stem, and then remove the sensor assembly from the rim.



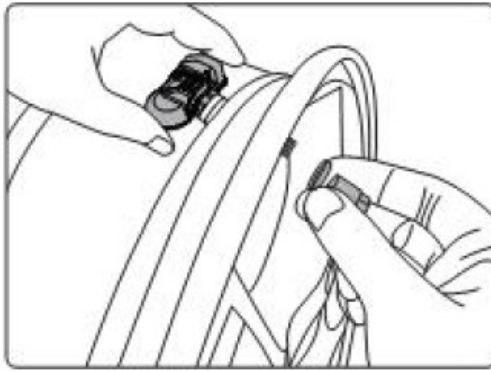
4. Mounting sensor and valve

- Step1. Firmly connect the valve stem and the sensor body. Note: ensure the assembly will not fall apart.
- Step2. Remove the cap, screw nut, and washer from the valve stem one by one.



- Step3. Slide the valve stem through the valve hole of the rim with the sensor on the inside of the rim, assemble the two parts back on the stem in the order of washer, screw nut.
- Step4. Tighten the screw nut with 4.0 N.m with the help of the fixed rod, then assemble the cap back on the stem.

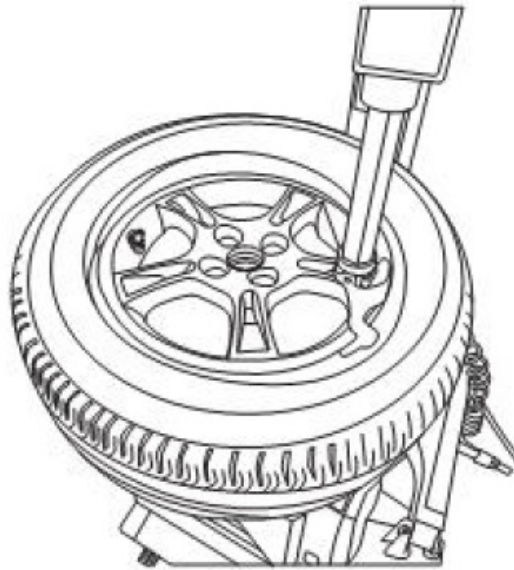
WARNING: It's mandatory to use the fixed rod to install the clamp-in MX-Sensor, else some unknown damages will be caused. The washer, screw nut, and cap should be located outside of the rim.



5. Mounting the tire

Place the tire on the rim, make sure that the valve faces the separation head at an angle of 180°. Mount the tire over the rim.

CAUTION: The tire should be mounted to the wheel using tire changer manufacturer's instructions.



Product Information



Take 433MHz sensor as an example in this manual.

CAUTION:

- Autel MX-Sensors arrive blank and must be programmed with Autel TPMS tool, which recommended to program prior to installation.
- Do not race with the vehicle on which the Clamp-in MX-Sensor is mounted, and always keep the drive speed under 240km/h.

SAFETY INSTRUCTIONS

Before installing the sensor, read the installation and safety instructions carefully. For reasons of safety and for optimal operation, we recommend that any maintenance and repair work be carried out by trained experts only, in accordance with the guidelines of the vehicle manufacturer. The valves are safety-relevant parts which are intended for professional installation only. Failure to do so may result in the failure of the TPMS sensor. AUTEL does not assume any liability in case of faulty or incorrect installation of the product.

CAUTION

- The TPMS sensor assemblies are replacement or maintenance parts for vehicles with factory installed TPMS.
- Make sure to program the sensors by AUTEL sensor programming tools by the specific vehicle make, model and year before installation.
- Do not install programmed TPMS sensors in damaged wheels.
- In order to guarantee optimal function, the sensors may only be installed with original valves and accessories provided by AUTEL. Upon completing the installation, test the vehicle's TPMS following the procedures described in the original manufacturer's user guide to confirm proper installation.

WARRANTY

AUTEL guarantees that the sensor is free from material and manufacturing defects for a period of twenty-four (24) months or for 25,000 miles, whichever comes first. AUTEL will at its discretion replace any merchandise during

the warranty period.

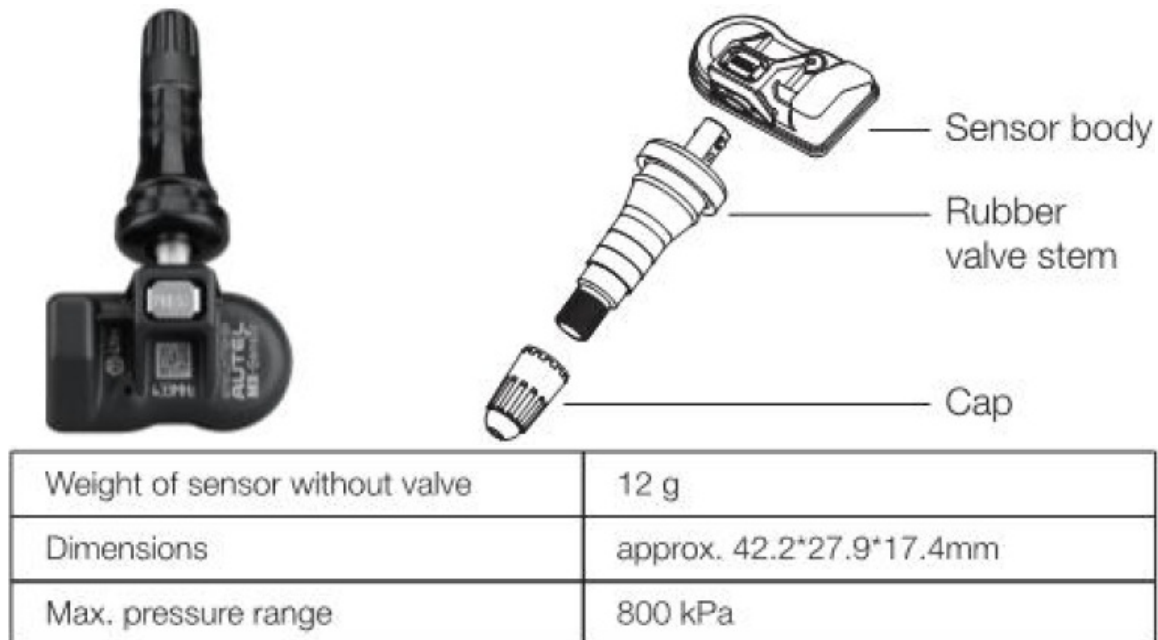
The warranty shall be void if any of the following occurs:

1. Improper installation of products
2. Improper usage
3. Induction of defect by other products
4. Mishandling of products
5. Incorrect application
6. Damage due to collision or tire failure
7. Damage due to racing or competition
8. Exceeding specific limits of the product

EXPLODED VIEW OF SENSOR

CAUTION: Each time a tire is serviced or dismounted, or if the sensor is removed or replaced, it is mandatory to replace the rubber grommet, washer, nut and valve core with our parts to ensure proper sealing. It is mandatory to replace the sensor if it is externally damaged.

Correct sensor nut torque: 4 Newton-meters.



INSTALLATION GUIDE

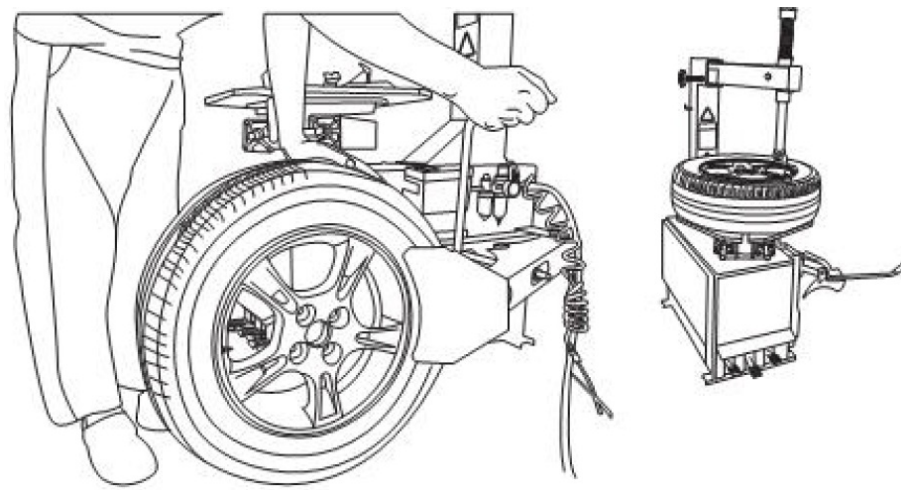
IMPORTANT: Before operating or maintaining this unit, please read these instructions carefully and pay extra attention to the safety warnings and precautions. Use this unit correctly and with care. Failure to do so may cause damage and/or personal injury and will void the warranty.

1. Loosening the tire

Remove the valve cap and core and deflate the tire.

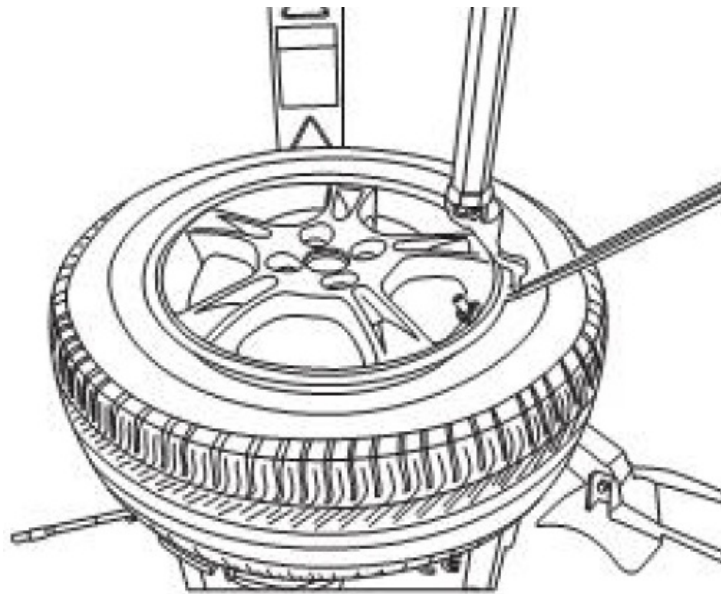
Use the bead loosener to unseat the tire bead.

CAUTION: The bead loosener must be facing the valve.



2. Dismounting the tire

Clamp the tire onto the tire changer, and adjust the valve at 1 o'clock relative to the tire separation head. Insert the tire tool and lift the tire bead onto the mounting head to dismount the bead.

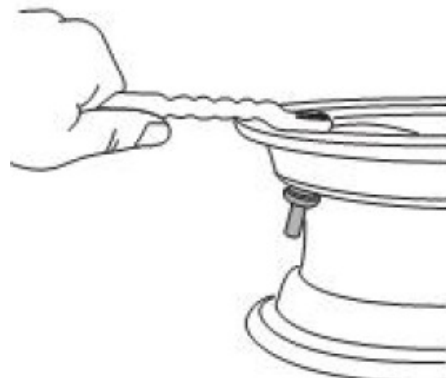


CAUTION:

This starting position must be observed during the whole dismounting process.

3. Dismounting the sensor

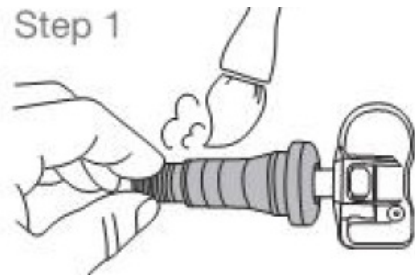
Remove the cap, screw nut, and washer from the valve stem, and then remove the sensor assembly from the rim.



4. Mounting sensor and valve

- Step 1. Apply tire soap or lube solution to the rubber valve stem.

⚠ CAUTION:
and rim hole should be
concentric.



- Step2. Line the sensor up with rim hole and attach a standard TTV pull in tool to the end of the valve.
- Step3. Pull the valve stem straight through the valve hole. Note the rubber bulb of the valve resting against the rim, then assemble the cap back on the stem.

Step 2



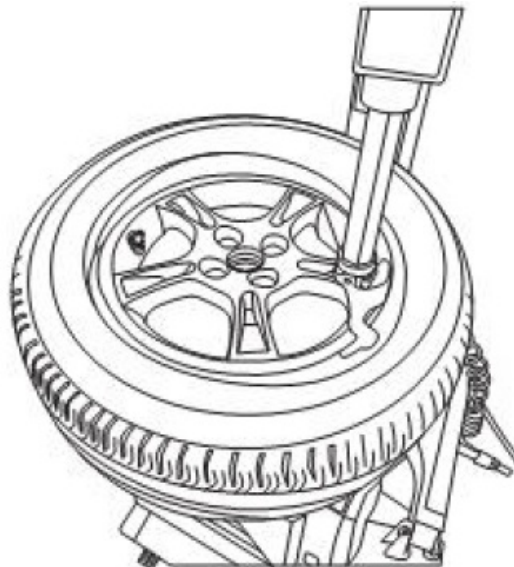
Step 3



5. Mounting the tire

Place the tire on the rim, make sure that the valve faces the separation head at an angle of 180°. Mount the tire over the rim.

CAUTION: The tire should be mounted to the wheel using tire changer manufacturer's instructions.



Product Information



Take 433MHz sensor as an example in this manual.

CAUTION:

- Autel MX-Sensors arrive blank and must be programmed with Autel TPMS tool, which recommended to program prior to installation.
- Do not race with the vehicle on which the Clamp-in MX-Sensor is mounted, and always keep the drive speed under 240km/h.

SAFETY INSTRUCTIONS

Before installing the sensor, read the installation and safety instructions carefully. For reasons of safety and for optimal operation, we recommend that any maintenance and repair work be carried out by trained experts only, in accordance with the guidelines of the vehicle manufacturer. The valves are safety-relevant parts which are intended for professional installation only. Failure to do so may result in the failure of the TPMS sensor. AUTEL does not assume any liability in case of faulty or incorrect installation of the product.

CAUTION

- The TPMS sensor assemblies are replacement or maintenance parts for vehicles with factory installed TPMS.
- Make sure to program the sensors by AUTEL sensor programming tools by the specific vehicle make, model and year before installation.
- Do not install programmed TPMS sensors in damaged wheels.
- In order to guarantee optimal function, the sensors may only be installed with original valves and accessories provided by AUTEL. Upon completing the installation, test the vehicle's TPMS following the procedures described in the original manufacturer's user guide to confirm proper installation.

WARRANTY

AUTEL guarantees that the sensor is free from material and manufacturing defects for a period of twenty-four (24) months or for 25,000 miles, whichever comes first. AUTEL will at its discretion replace any merchandise during the warranty period.

The warranty shall be void if any of the following occurs:

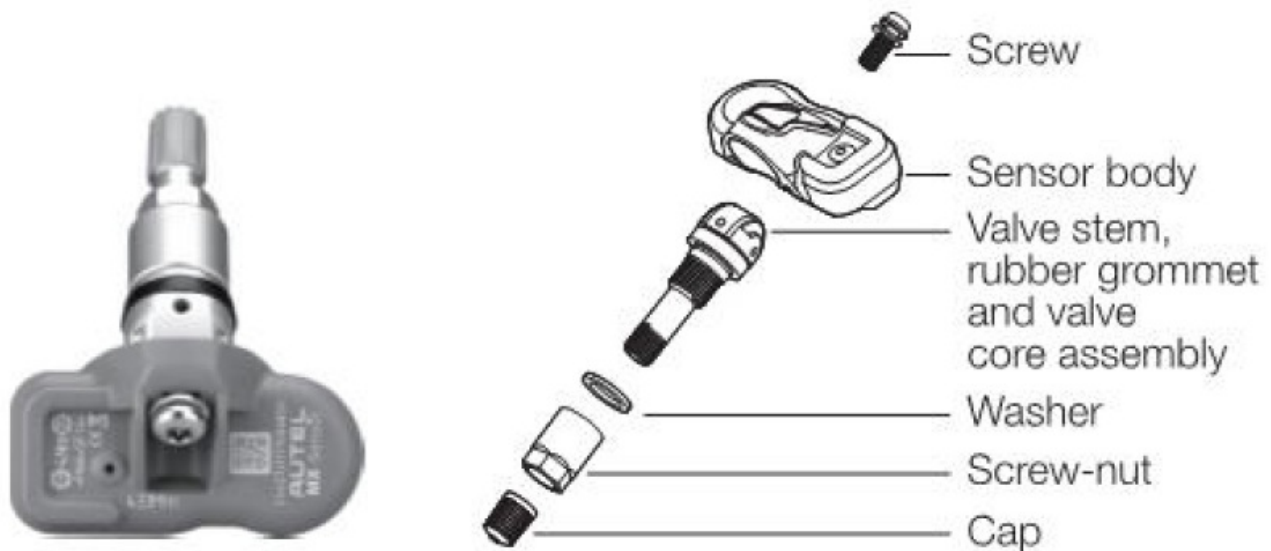
1. Improper installation of products
2. Improper usage

3. Induction of defect by other products
4. Mishandling of products
5. Incorrect application
6. Damage due to collision or tire failure
7. Damage due to racing or competition
8. Exceeding specific limits of the product

EXPLODED VIEW OF SENSOR

CAUTION: Each time a tire is serviced or dismounted, or if the sensor is removed or replaced, it is mandatory to replace the rubber grommet, washer, nut and valve core with our parts to ensure proper sealing. It is mandatory to replace the sensor if it is externally damaged.

Correct sensor nut torque: 4 Newton-meters.



Weight of sensor without valve	18.5 g
Dimensions	approx. 55.1*29.4*21.8 mm
Max. pressure range	800 kPa

INSTALLATION GUIDE

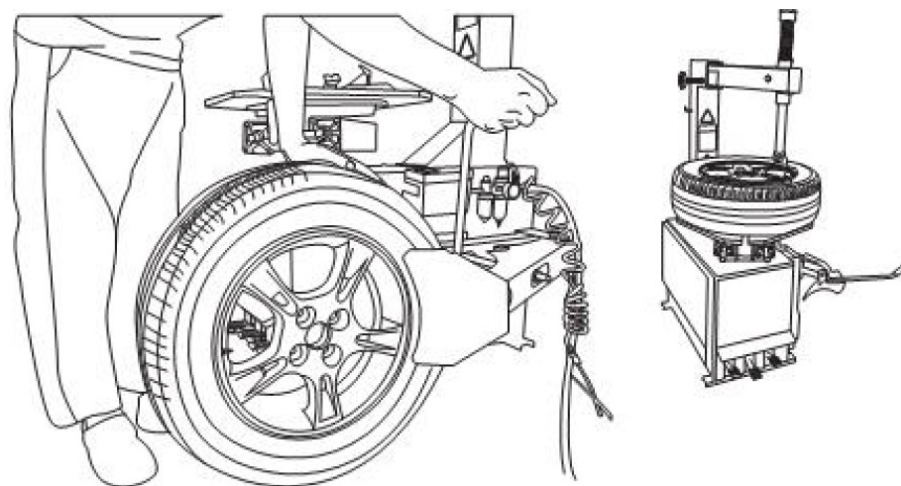
IMPORTANT: Before operating or maintaining this unit, please read these instructions carefully and pay extra attention to the safety warnings and precautions. Use this unit correctly and with care. Failure to do so may cause damage and/or personal injury and will void the warranty.

1. Loosening the tire

Remove the valve cap and core and deflate the tire.

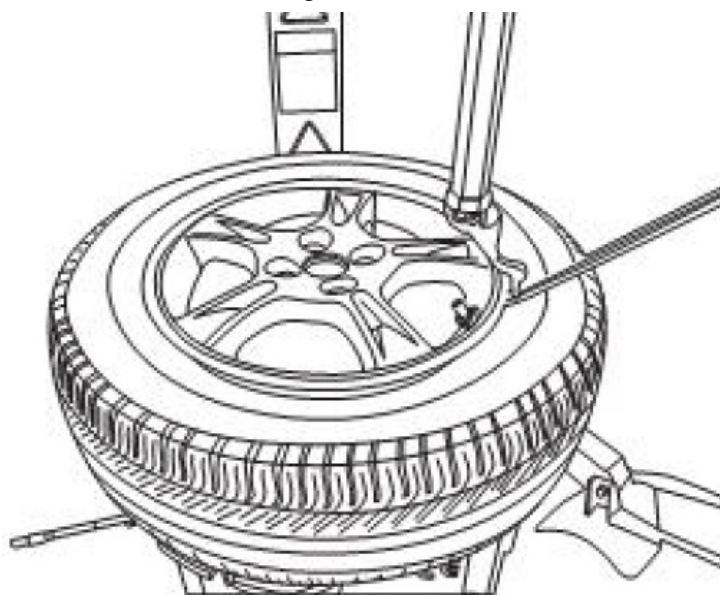
Use the bead loosener to unseat the tire bead.

CAUTION: The bead loosener must be facing the valve.



2. Dismounting the tire

Clamp the tire onto the tire changer, and adjust the valve at 1 o'clock relative to the tire separation head. Insert the tire tool and lift the tire bead onto the mounting head to dismount the bead.

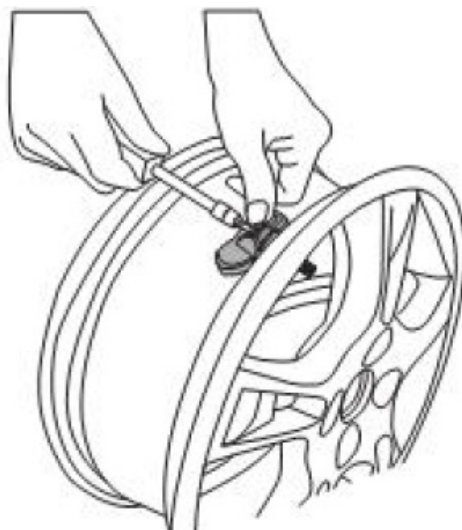


CAUTION:

This starting position must be observed during the whole dismounting process.

3. Dismounting the sensor

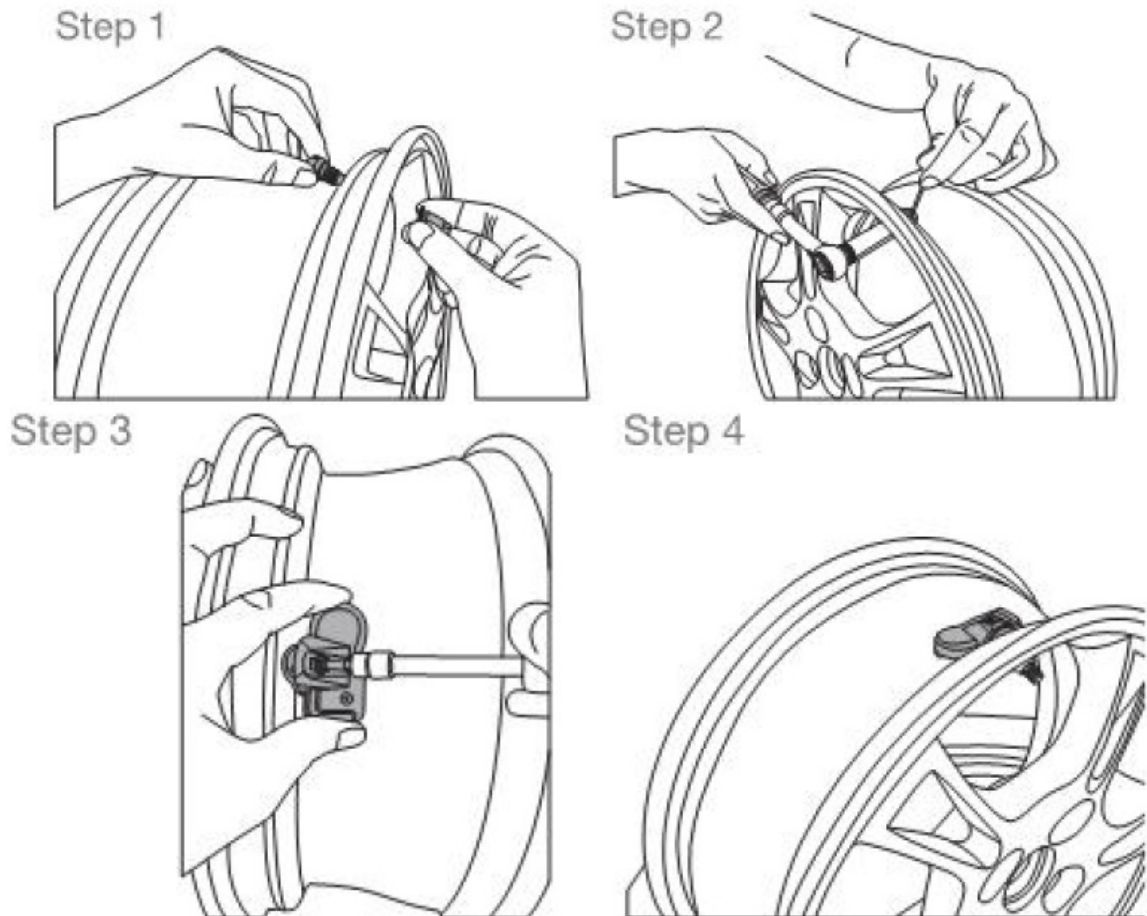
Remove the cap, screw nut, and washer from the valve stem, and then remove the sensor assembly from the rim.



4. Mounting sensor and valve

- Slide the valve stem through the valve hole of the rim. Tighten the screw-nut with 4.0 Nm with the help of

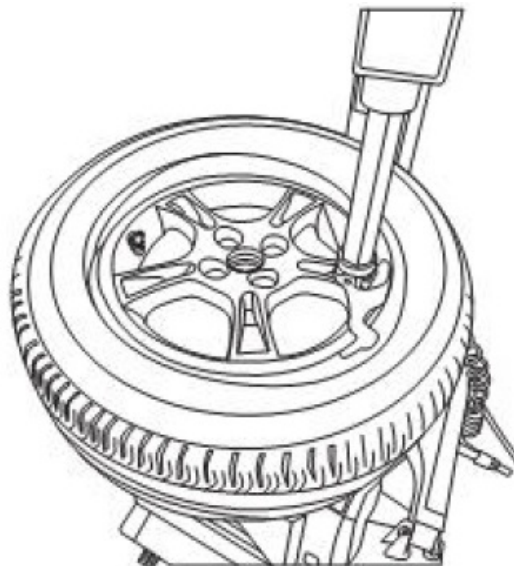
the positioning pin. Assemble the sensor and the valve stem together by screw. Hold the sensor body against the rim and tighten the screw.



5. Mounting the tire

Place the tire on the rim, make sure that the valve faces the separation head at an angle of 180°. Mount the tire over the rim.

CAUTION: The tire should be mounted to the wheel using tire changer manufacturer's instructions.





[AUTEL TPMS Sensor MX Sensor](#) [pdf] User Manual
TPS218, TPMS Sensor MX Sensor, TPMS, Sensor MX Sensor, MX Sensor, Sensor

References

- [User Manual](#)