



# AUTEL MaxiCOM MK808BT Car Diagnostic Scan Tool User Guide

[Home](#) » [AUTEL](#) » AUTEL MaxiCOM MK808BT Car Diagnostic Scan Tool User Guide 

## Contents

- [1 AUTEL MaxiCOM MK808BT Car Diagnostic Scan Tool](#)
- [2 Getting Started](#)
- [3 INSTALLATION INSTRUCTION](#)
- [4 Software Update](#)
- [5 MaxiVCI Mini Firmware Update](#)
- [6 Wireless Data Printing Print via PC](#)
- [7 FCC STATEMENT](#)
- [8 Documents / Resources](#)
- [9 Related Posts](#)

# AUTEL®

**AUTEL MaxiCOM MK808BT Car Diagnostic Scan Tool**



Thank you for purchasing this Autel tool. Our tools are manufactured to a high standard and – when used according to these instructions and properly maintained – will provide years of trouble-free performance

Please scan this QR code to view or download the MKB0BBT User Manual

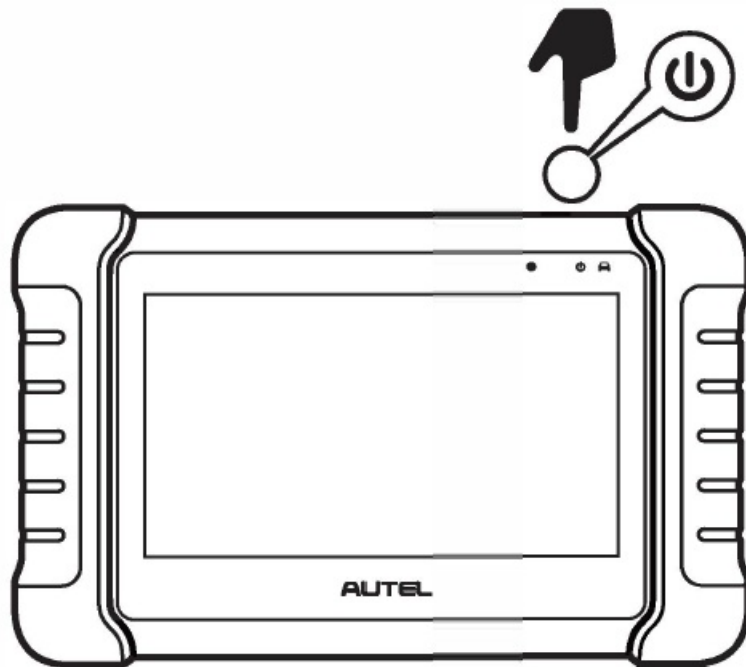


## Getting Started

**IMPORTANT:** Before operating or maintaining this unit, please read these instructions carefully, paying extra attention to the safety warnings and precautions. Failure to use this product properly may cause damage and/or personal injury and will void the product warranty.

## INSTALLATION INSTRUCTION

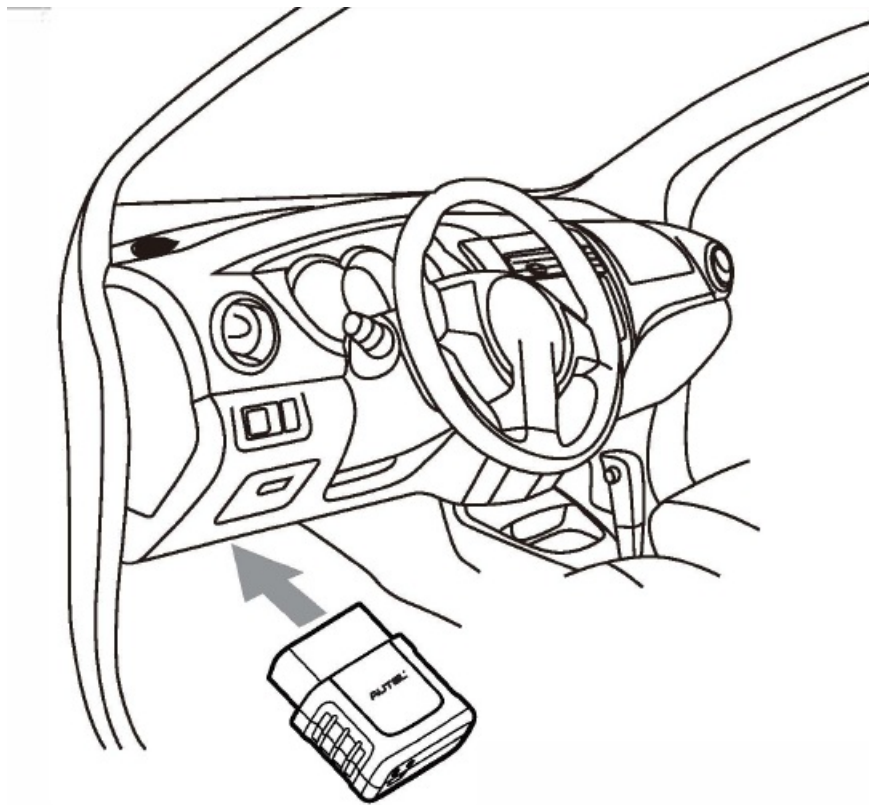
1. Press and hold the Lock/Power button to turn on the tablet.



2. Scan the above QR code to visit our website at [pro.autel.com](https://pro.autel.com).
1. Create an Autel ID and register the product with its serial number and password



3. Insert the MaxiVCI Mini into the vehicle's DLC, which is generally located under the vehicle dashboard.



4. Pair the tablet with the MaxiVCI Mini via Bluetooth to establish the connection.

1. When the MaxiVCI Mini is properly connected to the vehicle and the tablet, the VCI status button on the bottom bar of the screen will display a green badge with a check mark at the corner indicating the tablet is ready to start vehicle diagnosis



## Software Update

**IMPORTANT:** Make sure the tablet is connected to the Internet and has sufficient battery or is connected to a .. power source.

- Tap the Update application button from the Diagnostics Job Menu and the Update screen will display.
- Check for all available updates:
  - if you want to update all the items, tap the Update All button;
  - if you want to update one or some of the items, tap the Update button on the right column of the specific item(s).
- Tap Pause to suspend the updating process. Tap Continue to resume.
- When the updating process is completed, the software will be installed automatically. The previous version will be replaced.

## MaxiVCI Mini Firmware Update

- Connect the MaxiVCI Mini to a computer using a USB cable.
- Run the PC Suite software on the computer. This was installed along with the installation of the Maxi PC Suite software.
- Click the MaxiVCI Mini icon on the Device Selection window.
- The driver will automatically detect available update(s) for the device.
- Click Update to complete the operation if an update is available.
  - Connect the MaxiVCI Mini to the tablet using a USB cable.
- Tap VCI Manager from the Diagnostics Job Menu, and then tap Update to complete the operation if an update for the MaxiVCI Mini is available.

## Wireless Data Printing Print via PC

**IMPORTANT:** Make sure the tablet is connected to the same network as the computer, either via Wi-Fi or LAN, .. and that the computer is connected to a printer.

1. Run the MaxiSys Printer on the computer. This was installed along with the installation of the Maxi PC Suite software.
2. Click Test Print to make sure the printer is working properly.
3. Tap Print on the toolbar of the tablet. A temporary document will be created and sent to the computer.
  1. If the Auto Print option in the MaxiSys Printer is selected, the MaxiSys Printer will print the received document automatically.
  2. If the Auto Print option is not selected, click Open PDF File to view all the temporary files. Select the file(s) you want to print and click Print.

## Print via APP

If a Wi-Fi printer is available, please purchase a Wi-Fi printer APP and install it onto your tablet. To print a file, simply click on the Print button of a saved file on the tablet.

## FCC STATEMENT

This device complies with Part 15 of the FCC Rules. Operation is subject to the following two conditions:

1. This device may not cause harmful interference, and
2. This device must accept any interference received, including interference that may cause undesired operation.

**Warning:** Changes or modifications not expressly approved by the party responsible for compliance could void the user's authority to operate the equipment.

**NOTE:** This equipment has been tested and found to comply with the limits for a Class B digital device, pursuant to Part 15 of the FCC Rules.

These limits are designed to provide reasonable protection against harmful interference in a residential installation. This equipment generates uses and can radiate radio frequency energy and, if not installed and used in accordance with the instructions, may cause harmful interference to radio communications. However, there is no guarantee that interference will not occur in a particular installation. If this equipment does cause harmful

interference to radio or television reception, which can be determined by turning the equipment off and on, the user is encouraged to try to correct the interference by one or more of the following measures:

- Reorient or relocate the receiving antenna.
- Increase the separation between the equipment and receiver.
- Connect the equipment into an outlet on a circuit different from that to which the receiver is connected.
- Consult the dealer or an experienced radio/TV technician for help.

#### RF warning statement:

The device has been evaluated to meet general RF exposure requirement

**MaxiCOM MK808BT**

**For service and support, please contact us**

<http://pro.autel.com>

[www.autel.com](http://www.autel.com)

[www.maxitpms.com](http://www.maxitpms.com)

[support@autel.com](mailto:support@autel.com) / [supportpms@auteltech.com](mailto:supportpms@auteltech.com) 0086-755-2267-2493 (China HQ)/ 1-855-AUTEL-US (288-3587) (North America)/ 0049 (0) 6103-2000520 (Europe)/+045 5948465 (APAC) / +971 585 002709 (IMEA)

© Autel Intelligent Technology Corp., Ltd. All Rights Reserved.

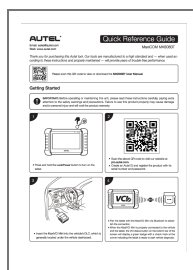
Email: [sales@autel.com](mailto:sales@autel.com)

Web: [www.autel.com](http://www.autel.com)

Please download the Maxi PC Suite software from

[www.autel.com](http://www.autel.com) >Support> Downloads > Autel Update Tools and install it on your computer

#### Documents / Resources



**[AUTEL MaxiCOM MK808BT Car Diagnostic Scan Tool](#)** [pdf] User Guide

MK808BT, WQ8-MK808BT, WQ8MK808BT, MaxiCOM MK808BT Car Diagnostic Scan Tool, MaxiCOM MK808BT, Car Diagnostic Scan Tool, Diagnostic Scan Tool, Scan Tool