

AUTEL MaxiAP AP2500 App Based Diagnostic Tool



AUTEL MaxiAP AP2500 App Based Diagnostic Tool User Guide

[Home](#) » [AUTEL](#) » AUTEL MaxiAP AP2500 App Based Diagnostic Tool User Guide 

Contents

- [1 AUTEL MaxiAP AP2500 App Based Diagnostic Tool](#)
- [2 FAQ](#)
- [3 Getting Started](#)
- [4 App Instructions](#)
- [5 Using Instructions](#)
- [6 UPDATING YOUR VCI FIRMWARE](#)
- [7 FCC STATEMENT](#)
- [8 Documents / Resources](#)
 - [8.1 References](#)
- [9 Related Posts](#)

AUTEL®

AUTEL MaxiAP AP2500 App Based Diagnostic Tool



FAQ

Frequently Asked Questions

- **Q:** How do I change the settings on the device?
 - **A:** To adjust settings, navigate to the settings menu using the navigation buttons and follow the on-screen instructions.
- **Q:** Can I use this product outdoors?
 - **A:** This product is designed for indoor use only and should not be exposed to extreme weather conditions.
- **Q:** How do I contact customer support for further assistance?
 - **A:** For any inquiries or support, please refer to the contact information provided in the user manual or visit our website for online support options.

Thank you for purchasing this AUTEL tool. This tool is manufactured to a high standard and will provide years of trouble-free performance when used in accordance with these instructions and properly maintained.

Getting Started

IMPORTANT

- Before operating this unit, please read these instructions carefully, paying extra attention to the safety warnings and precautions.
- Failure to use this product properly may cause damage and/or personal injury and will void the product

warranty.

NOTE:

- The interfaces and illustrations depicted in this Quick Reference Guide may differ slightly from the actual products.
- The user interfaces for iOS & Android devices might be slightly different. The screenshots in this Quick Reference Guide are based on the iOS app.

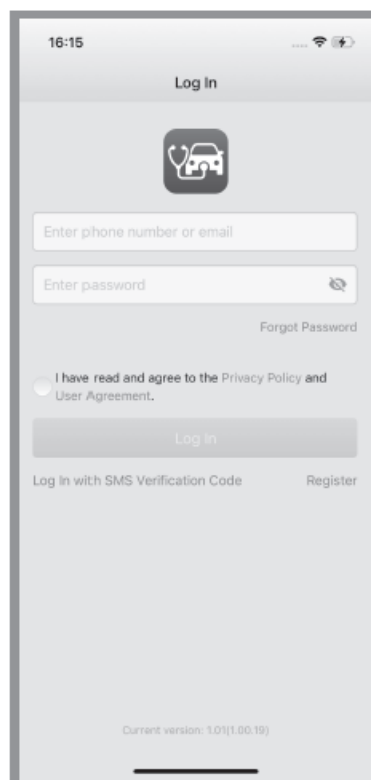
App Instructions

Download & install app



- Scan the QR code or search for the Autel MaxiAP Diag in the Apple App Store or Google Play Store to download and install the app to your device.

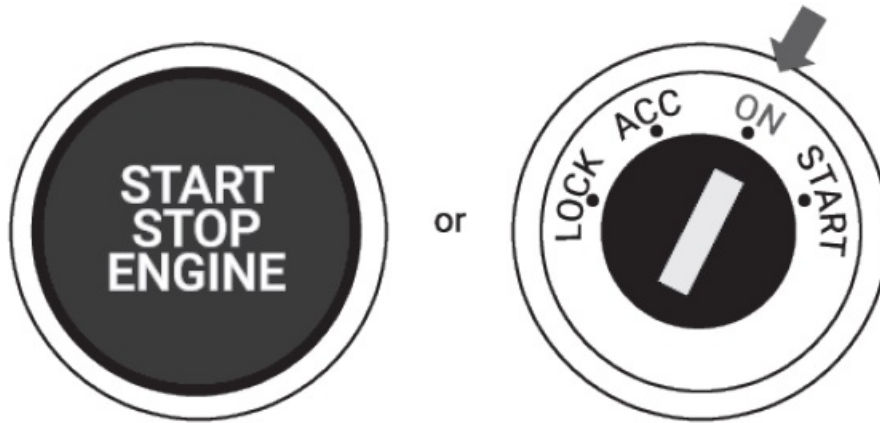
Register & log in



- Open the MaxiAP Diag app and tap Register. Follow the on-screen instructions to complete your registration.
- Log in with your registered phone number/ email and password.

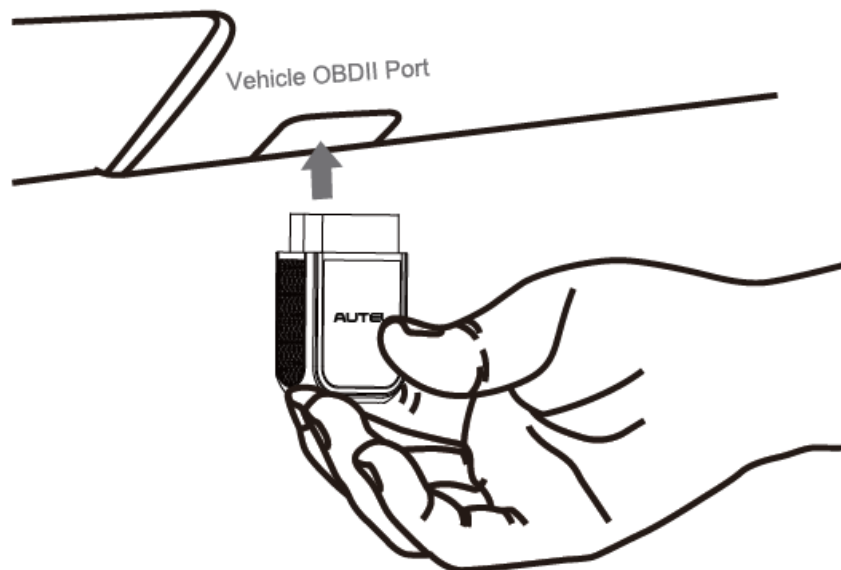
Using Instructions

Key On



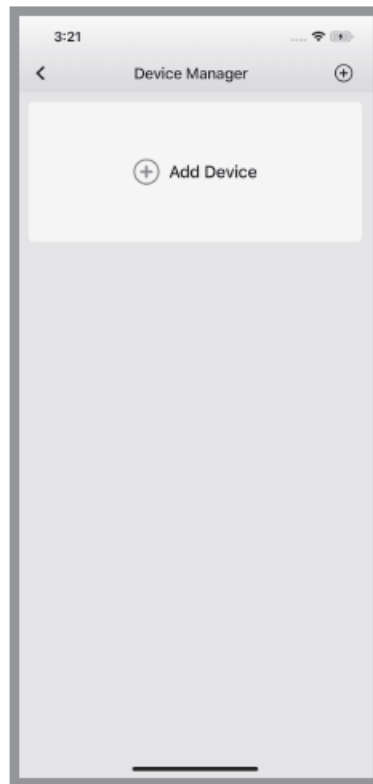
- Turn the vehicle ignition to the On position.

Locate the OBDII port



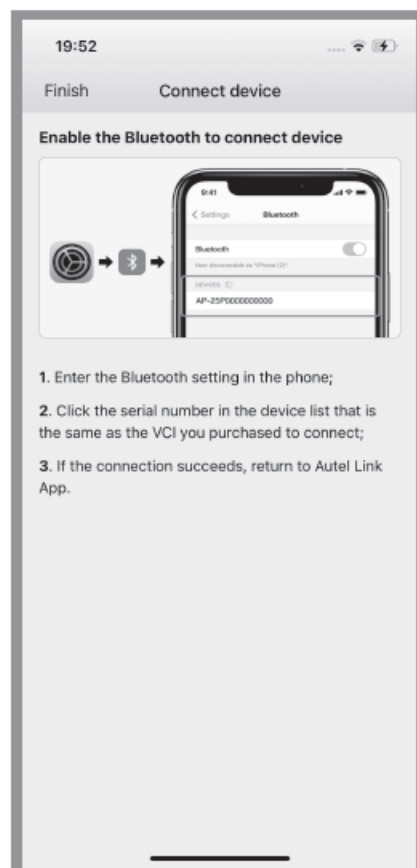
- Plug the Bluetooth dongle into the vehicle OBDII port. The vehicle OBDII port is generally located under the vehicle dashboard. Consult your vehicle use manual for the precise location.

Add the Bluetooth dongle



- On the Main Job, tap Me > Device Manager > Add Device to add the AP2500 dongle to your Device Manager on the MaxiAP Diag app.

Enable Bluetooth to connect your device



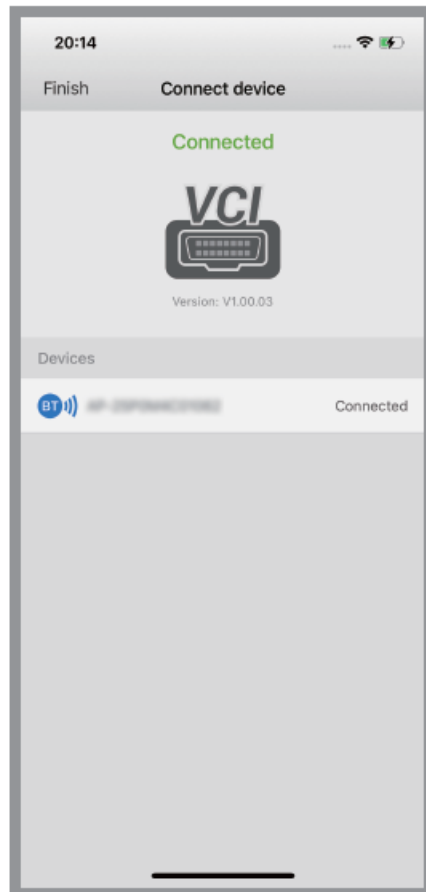
- Launch the Settings on your phone and enable Bluetooth.

- Look for the serial number of your device in the list of available Bluetooth devices. Tap it to connect.
- After connecting, return to the MaxiAP Diag app.

NOTE

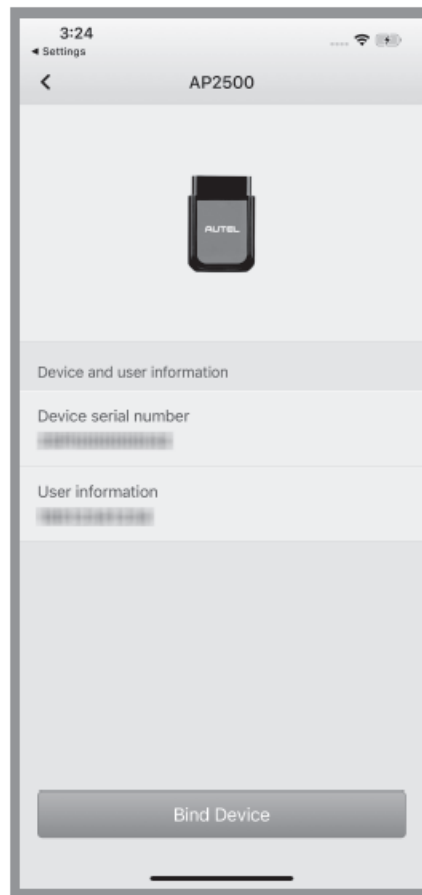
- For Android devices, tap Me > Device Manager > Add Device > AP2500 in the MaxiAP Diag app.
- Tap the device name with its serial number to directly connect the Bluetooth dongle.

Connect device



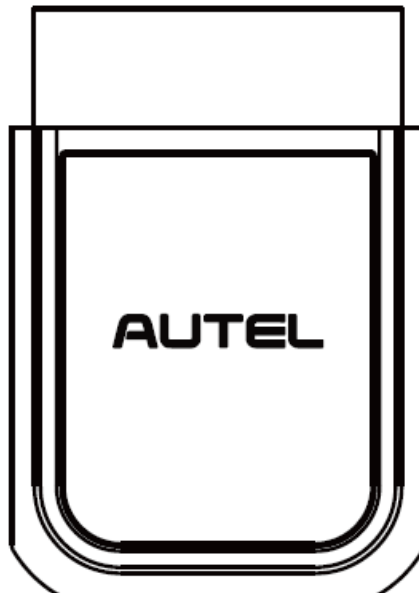
- After the device is connected via Bluetooth, the connection status is shown as “Connected” in the MaxiAP Diag app. Tap Finish on the upper-left corner to proceed.

Bind your VCI with your account



- Tap the Bind Device button on the bottom of the screen to automatically bind the dongle to your account.

Finish Installation



- Your MaxiAP AP2500 dongle is now ready for use.

UPDATING YOUR VCI FIRMWARE

Tap Me > Device Manager in the MaxiAP Diag app. Select AP2500 from the device list and then tap Firmware Upgrade to upgrade the firmware when a new version becomes available.

FCC STATEMENT

This device complies with Part 15 of the FCC Rules. Operation is subject to the following two conditions:

1. This device may not cause harmful interference.
2. This device must accept any interference received, including interference that may cause undesired operation.

Warning: Changes or modifications not expressly approved by the party responsible for compliance could void the user's authority to operate the equipment.

NOTE: This equipment has been tested and found to comply with the limits for a Class B digital device, pursuant to Part 15 of the FCC Rules. These limits are designed to provide reasonable protection against harmful interference in a residential installation. This equipment generates uses and can radiate radio frequency energy and, if not installed and used in accordance with the instructions, may cause harmful interference to radio communications. However, there is no guarantee that interference will not occur in a particular installation. If this equipment does cause harmful interference to radio or television reception, which can be determined by turning the equipment off and on, the user is encouraged to try to correct the interference by one or more of the following measures:

- Reorient or relocate the receiving antenna.
- Increase the separation between the equipment and receiver.
- Connect the equipment into an outlet on a circuit different from that to which the receiver is connected.
- Consult the dealer or an experienced radio/TV technician for help.

RF warning statement:

- The device has been evaluated to meet general RF exposure requirement.
- The device can be used in portable exposure condition without restriction.

ISED Statement

This device complies with Industry Canada licence-exempt RSS standard(s). Operation is subject to the following two conditions:

1. this device may not cause interference.
2. this device must accept any interference, including interference that may cause undesired operation of the device."

Web: www.autel.com

Documents / Resources



MaxiAP AP2500 App Based Diagnostic Tool, MaxiAP AP2500, App Based Diagnostic Tool, Bas ed Diagnostic Tool, Diagnostic Tool, Tool

- User Manual

This website is an independent publication and is neither affiliated with nor endorsed by any of the trademark owners. The "Bluetooth®" word mark and logos are registered trademarks owned by Bluetooth SIG, Inc. The "Wi-Fi®" word mark and logos are registered trademarks owned by the Wi-Fi Alliance. Any use of these marks on this website does not imply any affiliation with or endorsement.