



AUTEL AutoLink AL2500 Professional Scan Tool User Guide

[Home](#) » [AUTEL](#) » AUTEL AutoLink AL2500 Professional Scan Tool User Guide 

AUTEL AutoLink AL2500 Professional Scan Tool



Thank you for purchasing Autel tool. This tool is manufactured to a high standard and will provide years of trouble-free performance when used in accordance to these instructions and properly maintained.

Contents

- 1 Getting Started
- 2 Connect to the Vehicle
- 3 Firmware Update Through the Maxi PC Suite
- 4 FCC STATEMENT
- 5 Documents / Resources
- 6 Related Posts

Getting Started

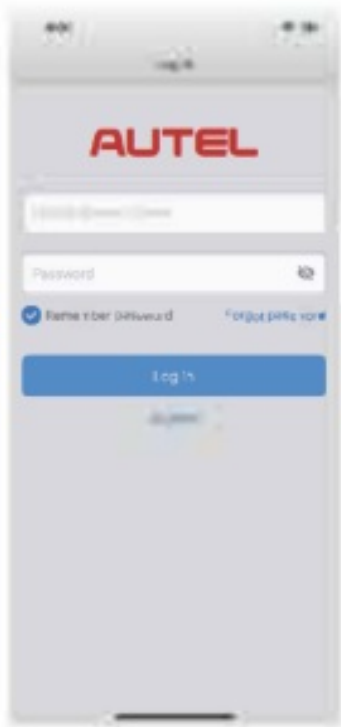


IMPORTANT: Before operating or maintaining this unit, please read these instructions carefully. Failure to use this unit correctly may cause damage and/or personal injury and will void the product warranty.

1. Search for **Autel** Link in the Google Play store or App Store to download and install the app to your device, or scan the above QR code to download the Autel Link app. In Android system, you will be directed to Google Play, while iOS users will be directed to the App Store.



2. Open the Autel Link app and tap **Register** in the middle of the screen. Follow the on-screen instructions to complete the registration. Log in with your registered email address/phone number and password.



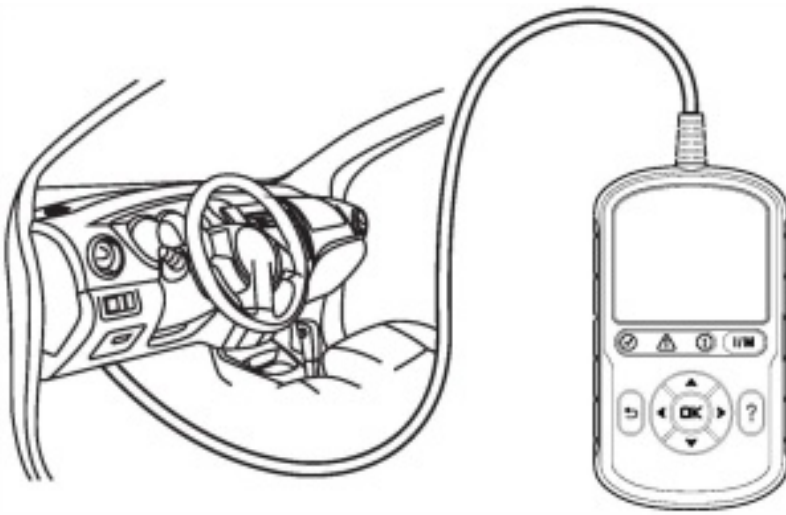
3. On your device, tap **Me> Device Manager> Binding Equipment**, the device will automatically jump to the next screen. Tap to scan the QR code imprinted on the AL2500 tool.



4. After the scanning is complete and the serial number is automatically retrieved, tap the **Bind Equipment** button at the bottom of the screen to proceed. Tap the tool name — AL2500 to enter the next screen



5. Connect the OBDII cable's 16-pin male adapter to the vehicle's Data Link Connector (DLC), which is generally located under the vehicle dashboard. The tool will be automatically powered on Your AL2500 is now ready to use.



6. Tap the **Connect Device** button at the bottom of the screen to connect the device. Once connected successfully, tap the **Firmware Upgrade** button to update the firmware.



Connect to the Vehicle



- Scan QR Code to visit our website at www.autel.com.
- To update the firmware, please create an Autel ID and register the product with device's serial number and password, which can be found by tapping the Setup > About buttons on the tool screen.

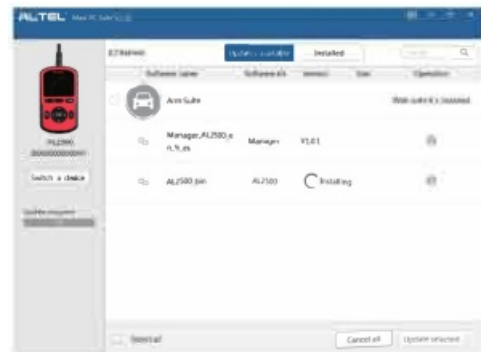
- Connect the 0B011 cable's 16-pin male adapter to the vehicle's Data Link Connector (DLC), which is generally located under the vehicle dashboard.
- The tool will be automatically powered on. Your AL2500 is now ready to use.

Firmware Update Through the Maxi PC Suite

Please download the Maxi PC Suite from www.autel.com > Support > Downloads > Autel Update Tools, and install to your Windows-based computer.



- Connect the device with the computer using the USB cable.
- Run the Maxi PC Suite. Select **Update Mode** in the tool.
Wait for the **Log In** window to display.
- Enter your Autel ID and password, tap **Log In** and wait for the Update window to display. If you forgot your password, click the **Forgot Password?** link to our website and retrieve your password. Or click **Sign Up** to create an Autel ID to continue.



- In the Update window, if update(s) is available, tap Update on the right side of the screen to update the firmware.
- Tap the Installed tag and the list of **installed** programs will display.

NOTE: The interfaces in this quick guide are for reference only.

FCC STATEMENT

This device complies with Part 15 of the FCC Rules. Operation is subject to the following two conditions: (1) This

device may not cause harmful interference, and (2) This device must accept any interference received, including interference that may cause undesired operation.

Warning: Changes or modifications not expressly approved by the party responsible for compliance could void the user's authority to operate the equipment.

NOTE: This equipment has been tested and found to comply with the limits for a Class B digital device, pursuant to Part 15 of the FCC Rules. These limits are designed to provide reasonable protection against harmful interference in a residential installation. This equipment generates uses and can radiate radio frequency energy and, if not installed and used in accordance with the instructions, may cause harmful interference to radio communications. However, there is no guarantee that interference will not occur in a particular installation. If this equipment does cause harmful interference to radio or television reception, which can be determined by turning the equipment off and on, the user is encouraged to try to correct the interference by one or more of the following measures:

- Reorient or relocate the receiving antenna. Increase the separation between the equipment and receiver.
- Connect the equipment into an outlet on a circuit different from that to which the receiver is connected.
- Consult the dealer or an experienced radio/TV technician for help.

FCC Radiation Exposure Statement:

This equipment complies with FCC radiation exposure limits set forth for an uncontrolled environment. This equipment should be installed and operated with minimum distance 20cm between the radiator & your body.


For service and support, please contact us.

<http://pro.autel.com> / www.autel.com / support@autel.com 0086-755-2267-2493 (China HQ) / 1-855-AUTEL-US (288-3587) (North America) 0049 (0) 6103-2000520 (Europe)/ +045 5948465 (APAC)/ +971 585 002709 (IMEA)

©Autel Intelligent Technology Corp., Ltd. All Rights Reserved.



Documents / Resources

	<p>AUTEL AutoLink AL2500 Professional Scan Tool [pdf] User Guide DR2015, WQ8-DR2015, WQ8DR2015, AutoLink AL2500 Professional Scan Tool, AL2500 Professional Scan Tool, Professional Scan Tool, Scan Tool</p>
---	--