



AUTEK Key Programmer Instructions

[Home](#) » [AUTEK](#) » AUTEK Key Programmer Instructions 



Autek Ikey 820 Key Programmer

Contents

- [1 Instruction for Update and Activate AUTEK IKEY820 Key Programmer](#)
 - [1.1 1. What you need](#)
 - [1.2 2. Install update tool on your PC](#)
 - [1.3 3. Update](#)
 - [1.4 4. Activate](#)
 - [1.5 5. Authorize](#)
- [2 Documents / Resources](#)
- [3 Related Posts](#)

Instruction for Update and Activate AUTEK IKEY820 Key Programmer

1. What you need

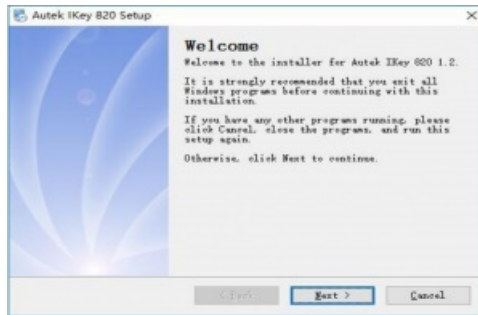
- 1) AUTEK IKEY 820 key programmer
- 2) PC with Win10/Win8/Win7/XP
- 3) USB cable

2. Install update tool on your PC

- 1, Login the website link <http://www.autektools.com/driverUlsetup.html>

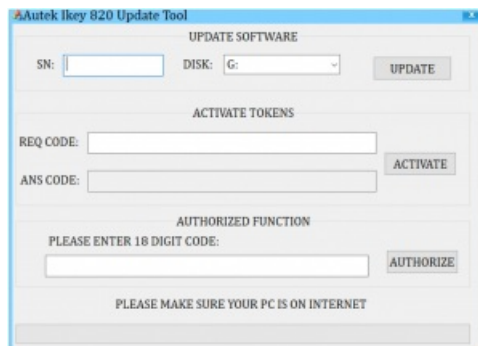


2, Select the item Autek Ikey 820 Update Tool V1.5 Setup from the list and install it to your PC. Double click the setup file to start installing the update tool



Page 1

3. Click „Next? until the finish window, and click finish button to end the install program. There will be a shortcut icon on the desktop. AUTEK IKEY 820 Update Tool contains three parts including UPDATE, ACTIVATE and MESSAGE from top to bottom.



3. Update

Take the following steps to update AUTEK IKEY 820 device:

- 1) Connect device to PC through USB cable;
- 2) Open AUTEK IKEY 820 Update Tool in your PC that needs to be on internet;
- 3) Select the device in list and input the SN (usually completed automatically);
- 4) Click UPDATE button to start updating, wait until the updating completed.

There is something you need to notice in each step.

- 1) The device should display “USB SD DISK MODE” when connected to PC through USB cable, if not, please unplug the USB cable and plug again. Do not unplug the USB cable or exit from USB SD DISK MODE.
- 2) If AUTEK IKEY 820 Update Tool is not installed, please install it first.
- 3) The DISK and SN should display automatically if the device is connected to PC. If the DISK has no device to

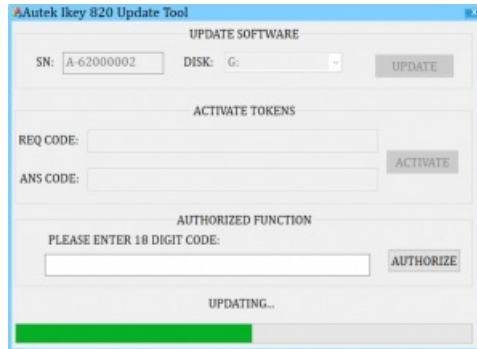
select, please unplug the USB cable and plug again. If the DISK has been selected, but SN is empty, please unplug the USB cable and plug again. If it's still the same, please input SN yourself. The SN should start with "A-".

4) It may take several minutes to update, it depends on the speed of your internet.

If there is any problem, it will display on message area, check according to the message and try again.

Here are the pages for updating. The SN is an example, you should use your own SN.

Page 2



Check SN and DISK before update, Wait until update successfully

4. Activate

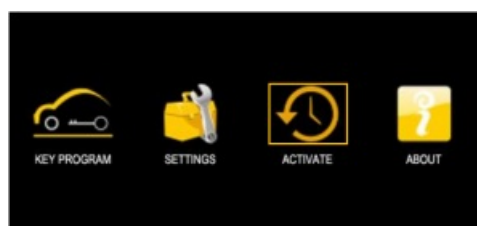
Activation means add tokens to your device. If your device runs out of tokens or you want to increase the number of tokens, you can use AUTEK IKEY 820 Update Tool to increase tokens.

Take the following steps to activate AUTEK IKEY 820 device:

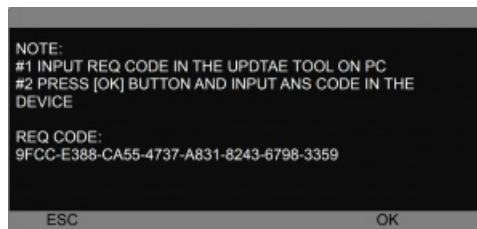
- 1) Supply power to the AUTEK IKEY 820 device through USB/12V DC adapter/OBD.
- 2) Go to the ACTIVATE menu, you will see a page with steps to activate your device and the REQ CODE which is need in AUTEK IKEY 820 Update Tool to get the ANS CODE.
- 3) Open AUTEK IKEY 820 Update Tool in your PC.
- 4) Input the REQ CODE to the AUTEK IKEY 820 Update Tool and click ACTIVATE button, then you will get the ANS CODE
- 5) Press OK button on the device and there display the page to input ANS CODE.
- 6) Input the ANS CODE you get in the AUTEK IKEY 820 Update Tool. There are two different
- 7) Press OK button and the page will show the result, SUCCESS or FAILED.
- 8) You can check your tokens in the ABOUT menu if you activate your device successfully.

Here are the pictures to activate the device. All the SN?REQ CODE and ANS CODE are examples, just ignore them.

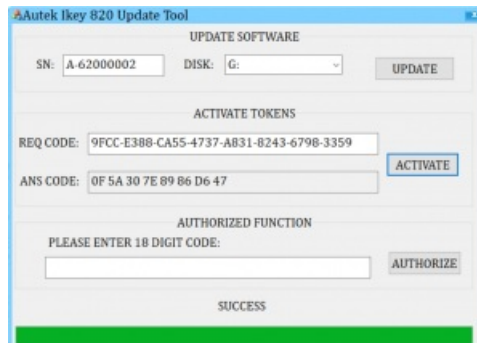
Page 3



Select the ACTIVATE menu

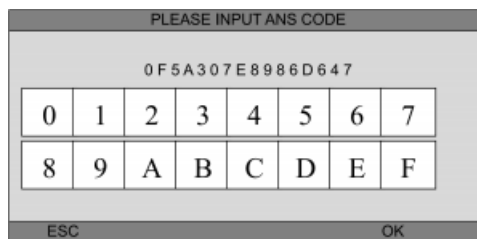


The ACTIVATE page



Open AUTEK IKEY 820 Update Tool and input the REQ CODE Get the ANS CODE

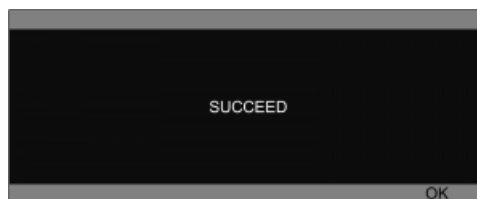
Page 4



Input the ANS CODE



Confirm the ANS CODE you input



SUCCEED means activate successfully



Check the tokens in ABOUT page

Page 5

5. Authorize


Authorize means you need to pay extra for the update for specific car makes including GM, Ford, Toyota, Grand Cherokee etc



Normally, we only provide customer the License number by email for the update in order to save the shipping cost for the real card.

Page 6

Documents / Resources

	<p>AUTEK Key Programmer [pdf] Instructions AUTEK, IKEY820</p>
---	---