



AUSDOM KAM200 Wireless Keyboard and Mouse Combo User Guide

[Home](#) » [AUSDOM](#) » AUSDOM KAM200 Wireless Keyboard and Mouse Combo User Guide 

Contents

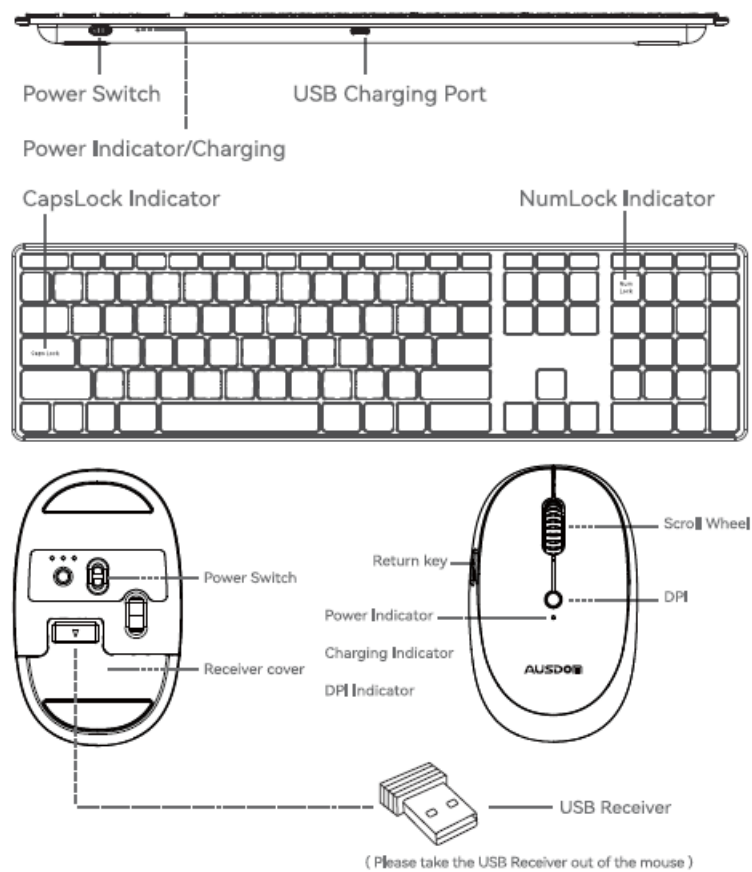
- [1 AUSDOM KAM200 Wireless Keyboard and Mouse Combo](#)
- [2 Product Overview](#)
- [3 Packing list](#)
- [4 Connections](#)
- [5 Function key description](#)
- [6 Indicator](#)
- [7 Charging](#)
- [8 Specifications](#)
- [9 WARRANTY CARD](#)
- [10 FCC](#)
- [11 Documents / Resources](#)
- [12 Related Posts](#)

AUSDOM®

AUSDOM KAM200 Wireless Keyboard and Mouse Combo



Product Overview



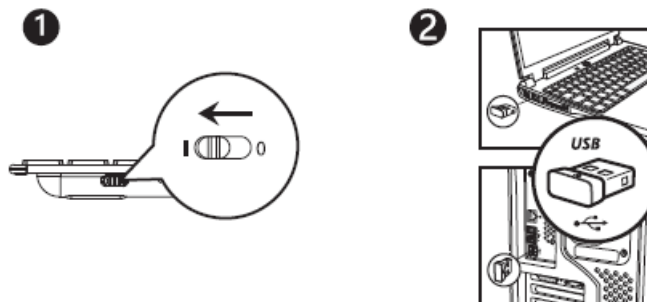
Packing list

- 1 Wireless Keyboard
- 1 Wireless Mouse
- 1 USB Receiver (Keyboard and mouse use the same USB Receiver)
- 1 USB To Type-C charging cable
- 1 User manual

Connections

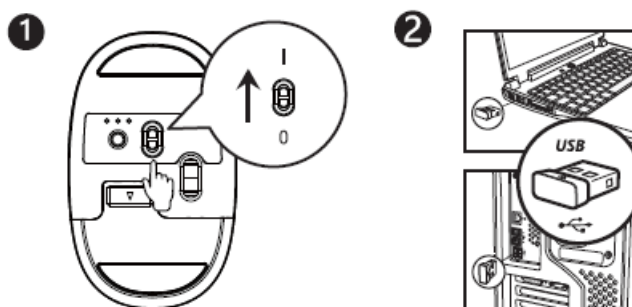
Wireless Keyboard

1. Turn on the keyboard power switch
2. Plug the USB Receiver into your computer device to use



Wireless Mouse

1. Turn on the mouse power switch
2. Plug the USB Receiver into your computer device to use



Function key description

Key	System Functions	Key	System Functions
	Mute		Decrease volume
	Increase volume		Previous track
	Play /Pause		Next track
	Decrease brightness		Increase brightness
	Calculator		Search
	Setting		Turn on Device
	Windows Switch		Open Browser
	Display Desktop		Lock Screen
+	Fn lock,open or close the F1~F12 Fn function		

Indicator

	Indicator	Status	Meaning
Keyboard	Power Indicator/ Charging Indicator	Red light goes off after being on for 2s	Powered on
		Red light flashes	Low battery, please charge it as soon as possible
		Red light is on always	In charging
		Green light is on always	Battery is fully charged
	CapsLock Indicator	White light is on always	Capitalization lock
	NumLock Indicator	White light is on always	NumLock
Mouse	Power Indicator/ Charging Indicator	Red light goes off after being on for 2s	Powered on
		Red light flashes	Low battery, please charge it as soon as possible
		Red light is on always	In charging
		Green light is on always	Battery is fully charged
	DPI Indicator	Light off after red light flashes once	Adjust DPI to one gear
		Light off after red light flashes twice	Adjust DPI to second gear
		Light off after red light flashes three times	Adjust DPI to third gear

Charging

When the power of the keyboard and mouse is too low, the power indicator light will flash red. Please charge in time to ensure normal use.

Note: When the power level is low, the transmission of the keyboard and mouse will be delayed, stuck and unstable.

Specifications

Keyboard	Connections	2.4G wireless Technology (USB Receiver)
	Wireless Range	>8m
	Battery Capacity	280mAh
	Continuously working time	>150 hours
	Standby Time	>150 days
	Charging Time	>1.5 hours
	Keys Life	3 Million times
Mouse	Connections	2.4G wireless Technology (USB Receiver)
	Wireless Range	>8m
	Battery Capacity	300mAh
	Continuously working time	>30 hours
	Standby Time	1 year
	Charging Time	>2.5 hours
	DPI	800-1200-1600

Note: Features and technical specifications are subject to change without notice, we apologize for any inconvenience.

CAUTION

RISK OF EXPLOSION IF BATTERY IS REPLACED BY AN INCORRECT TYPE DISPOSE OF USED BATTERIES ACCORDING TO THE INSTRUCTIONNS

RECYCLING

This product bears the selective sorting symbol for Waste electrical and electronic equipment (WEEE). This means that this product must be handled pursuant to European directive 2012/19/EU in order to be recycled or dismantled to minimize its impact on the environment. User has the choice to give his product to a competent recycling organization or to the retailer when he buys a new electrical electronic equipment.

WARRANTY CARD

ATTENTIONS:

- Please read the return procedures and warranty policy carefully on www.ausdom.com before sending items back to point-of-purchase.
- Please fill the card and send it to your reseller together with the product if your product's warranty is valid.

S.N:	
Date of Purchase:	
Product Model:	
RMA Number:	
Return Reason:	
Customer Name:	
TEL:	
E-mail:	
Address:	

FCC


NOTE: This equipment has been tested and found to comply with the limits for a Class B digital device, pursuant to part 15 of the FCC Rules. These limits are designed to provide reasonable protection against harmful interference in a residential installation. This equipment generates uses and can radiate radio frequency energy and, if not installed and used in accordance with the instructions, may cause harmful interference to radio communications. However, there is no guarantee that interference will not occur in a particular installation. If this equipment does cause harmful interference to radio or television reception, which can be determined by turning the equipment off and on, the user is encouraged to try to correct the interference by one or more of the following measures:

- Reorient or relocate the receiving antenna.
- Increase the separation between the equipment and receiver.
- Connect the equipment into an outlet on a circuit different from that to which the receiver is connected.
- Consult the dealer or an experienced radio/TV technician for help

Changes or modifications not expressly approved by the party responsible for compliance could void the user’s authority to operate the equipment. This device complies with Part 15 of the FCC Rules. Operation is subject to the following two conditions:

1. this device may not cause harmful interference, and
2. this device must accept any interference received, including interference that may cause undesired operation

Documents / Resources

	<p>AUSDOM KAM200 Wireless Keyboard and Mouse Combo [pdf] User Guide HW238-3, HW2383, 2AKHJ-HW238-3, 2AKHJHW2383, KAM200 Wireless Keyboard and Mouse Combo, KAM200, Wireless Keyboard and Mouse Combo, Wireless, Wireless Keyboard, Wireless Mouse, Keyboard and Mouse Combo, Keyboard and Mouse, Keyboard, Mouse</p>
---	---