




AURATON Switch Two 2-Channel Executive Module User Manual

[Home](#) » [AURATON](#) » AURATON Switch Two 2-Channel Executive Module User Manual 

Contents

- [1 AURATON Switch Two 2-Channel Executive Module](#)
- [2 Description of the device](#)
- [3 Connection diagram](#)
- [4 Pairing the AURATON Switch TWO with the AURATON Pulse](#)
- [5 Technical data](#)
- [6 Disposing of the devices](#)
- [7 Manufacturer](#)
- [8 Documents / Resources](#)
 - [8.1 References](#)
- [9 Related Posts](#)

AURATON

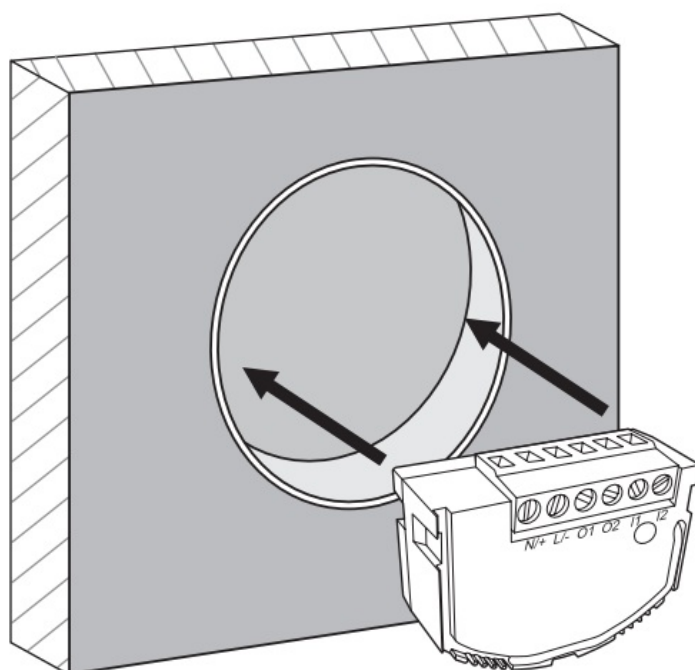
AURATON Switch Two 2-Channel Executive Module



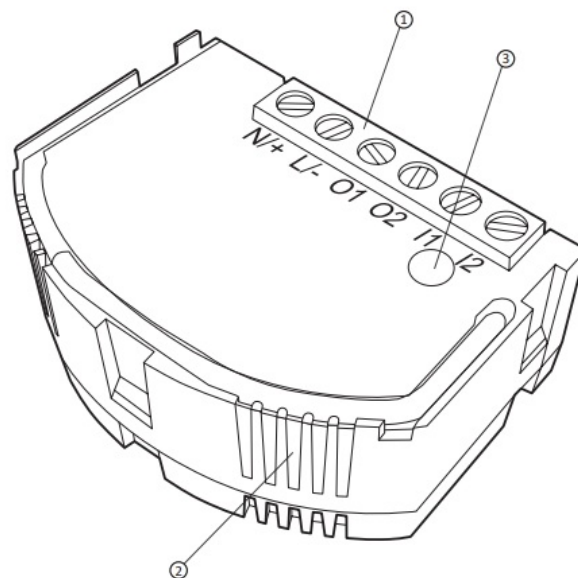
2-channel executive module

AURATON Switch TWO is a 2-channel executive module, designed to control an electrical device.

Installation of the device in installation boxes with a minimum depth of 60 mm.

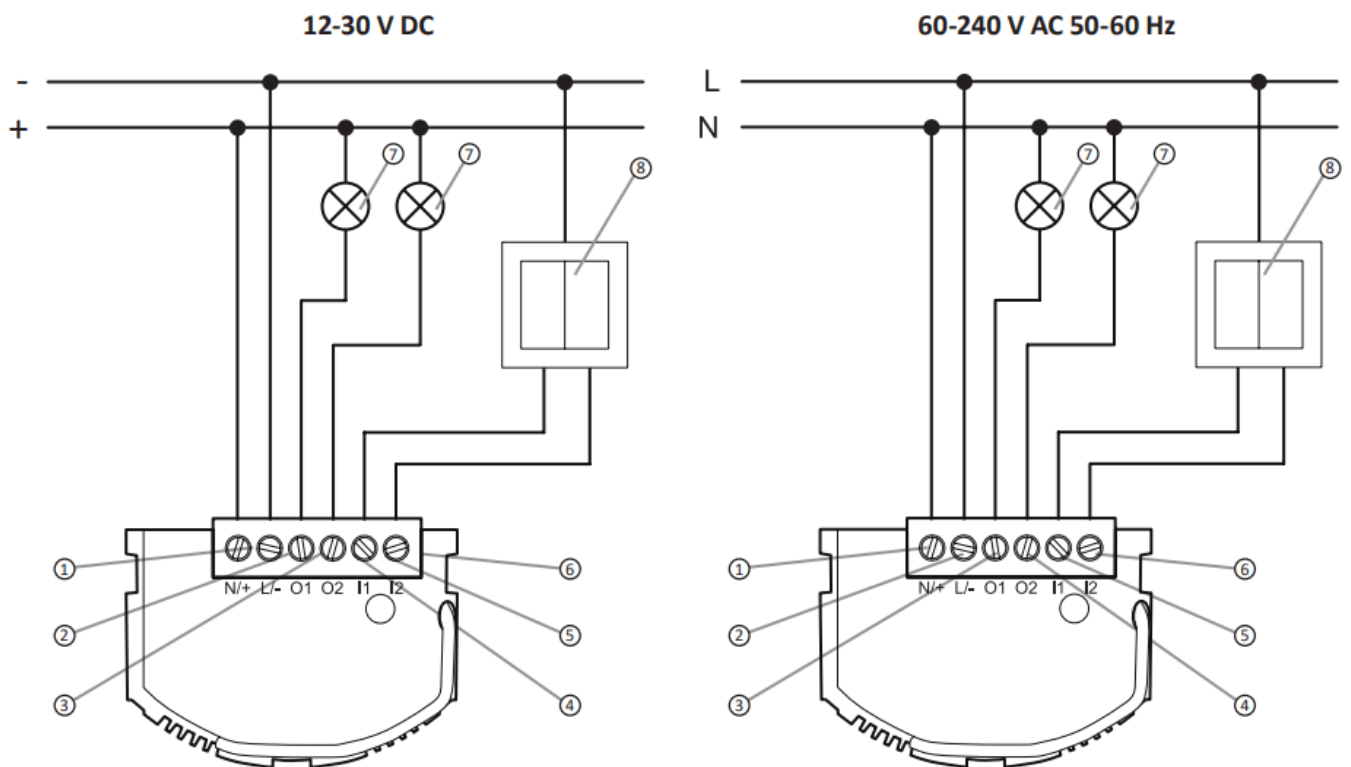


Description of the device



1. Connection terminals
2. Signaling diode
3. Button for pairing/removing the device from the system

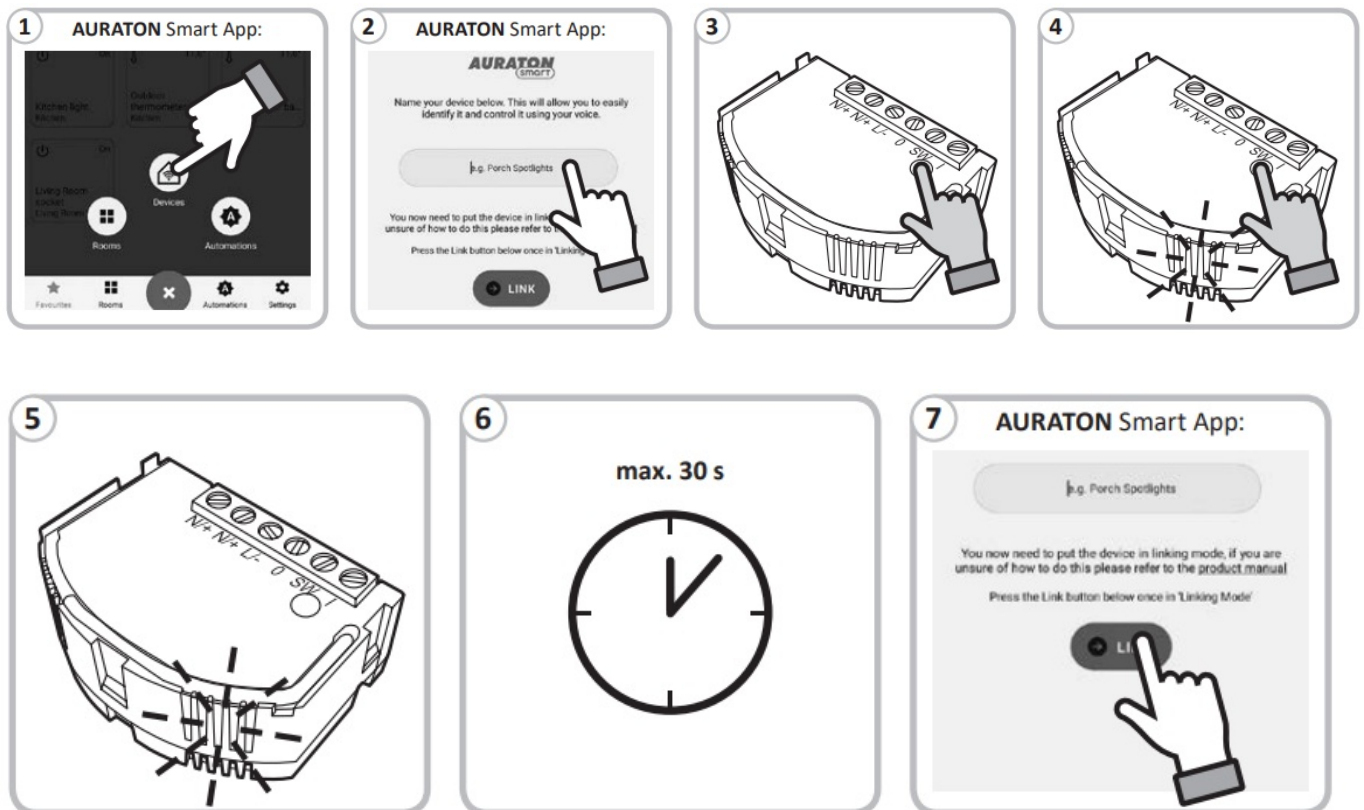
Connection diagram



1. (N/+) neutral terminal or (+) for DC voltage source
2. (L/-) phase conductor terminal or (-) for a DC voltage source
3. (O1) terminal of the receiver 1 output, (phase-L) or “-” (minus) for DC voltage source
4. (O2) terminal of the receiver 2 output, (phase-L) or “-” (minus) for a DC voltage source
5. (I1) switch terminal for receiver 1
6. (I2) switch terminal for receiver 2
7. energy receivers

8. wall switch

Pairing the AURATON Switch TWO with the AURATON Pulse



Technical data

AC supply voltage:	60-240 V AC, 50-60 Hz
DC supply voltage:	12-30 V DC
Maximum power consumption:	≤1 W
Standby power consumption:	≤0,4 W
Operating temperature range:	0 – 35°C
Weight limit:	up to 4.3 A (<1kW) per channel, for resistive load
Security Type:	External miniature circuit breaker with a maximum current of 10 A required
Control element:	Electromagnetic relay with micro break
Control method:	remotely – by radio locally – by pressing the button
Compatible with Internet getaway:	AURATON Pulse
Operation range:	approx. 30 m
Radio frequency:	868.150 MHz; 868.450 MHz
Radio signal strength:	Up to 11 dBm
Radio receiver category:	2
Radio protocol:	AURA
Security level:	IP20
Dimensions [mm]:	48 x 35 x 19

Disposing of the devices

The device is marked with a symbol of a crossed waste bin. Pursuant to European Directive 2012/19/EU and to the Act on waste electrical and electronic equipment, such mark indicates that the device, at the end of its service life, must not be disposed of together with other household waste. The user is responsible for delivering the devices to a reception point for used-up electric and electronic equipment.

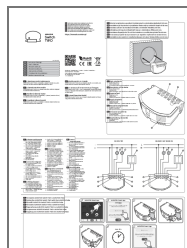
Hereby, LARS Andrzej Szymanski declares that the radio equipment type AURATON Switch TWO is in compliance with Directive 2014/53/EU and 2011/65/EU. The full text of the EU declaration of conformity is available at the following internet address: <https://manuals.auraton.pl>

Manufacturer

LARS Andrzej Szymański, Świerkowa 14, 64-320 Niepruszewo, POLAND
www.auraton.pl



Documents / Resources



[AURATON Switch Two 2-Channel Executive Module](#) [pdf] User Manual
Switch Two, 2-Channel Executive Module, Executive Module, 2-Channel Module, Module

References

- [🌐 AURATON manuals – Instrukcje urządzeń AURATON](#)
- [🔴 AURATON pompy ciepła, termostaty, sterowniki, smart home](#)
- [🌐 AURATON manuals – Instrukcje urządzeń AURATON](#)