

AURA MAIN COMPONENTS Installation Guide

[Home](#) » [Aura](#) » AURA MAIN COMPONENTS Installation Guide 

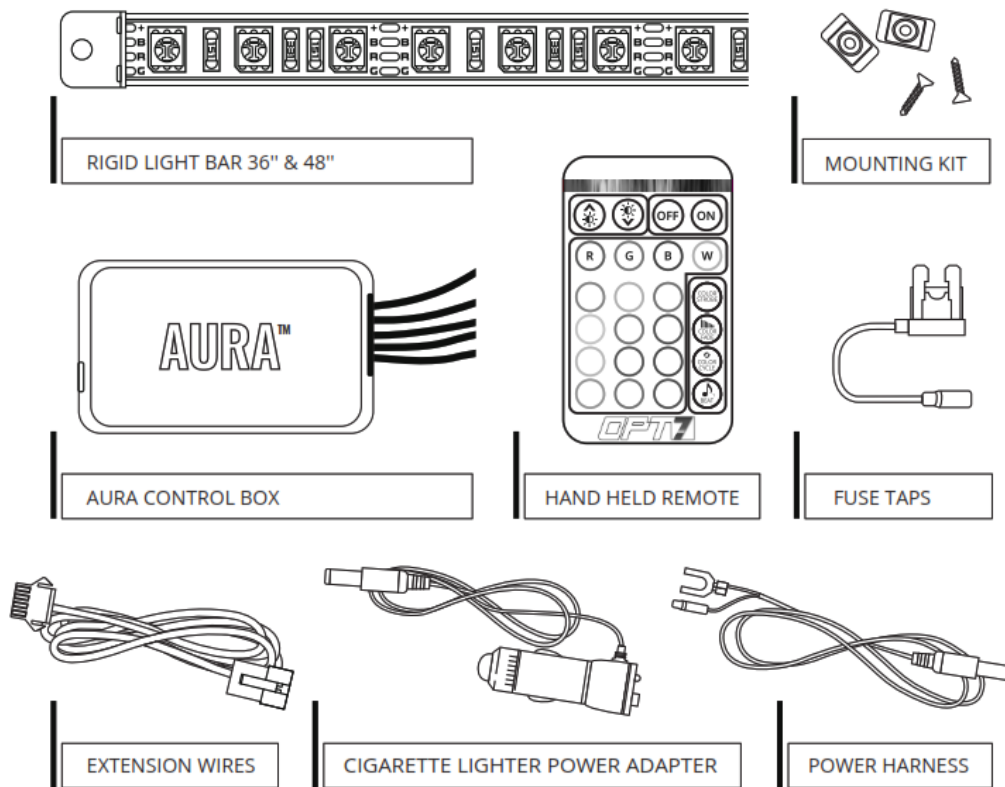
AURA™

UNDERBODY INSTALLATION GUIDE

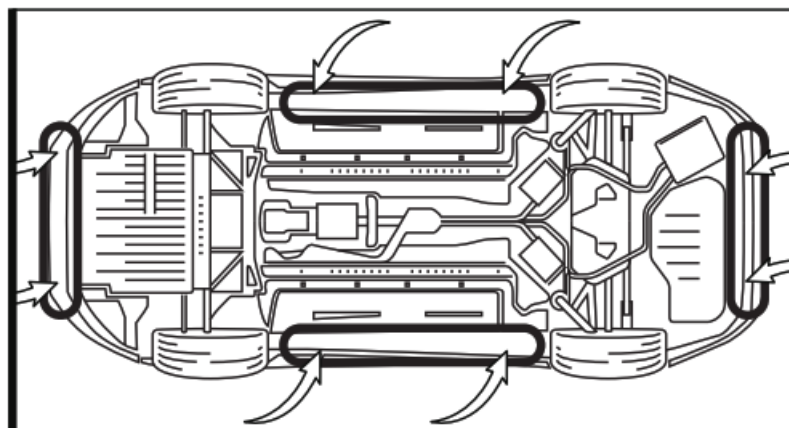
Contents

- [1 MAIN COMPONENTS](#)
- [2 INSTALLATION](#)
- [3 AUX WIRING FOR A DOME/DOOR LIGHT](#)
- [4 OPTIONAL UPGRADE](#)
- [5 DISCLAIMER](#)
- [6 Documents / Resources](#)
 - [6.1 References](#)
- [7 Related Posts](#)

MAIN COMPONENTS



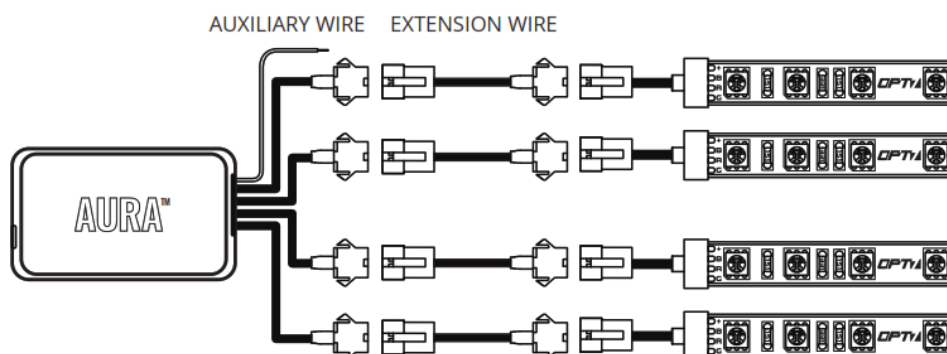
INSTALLATION



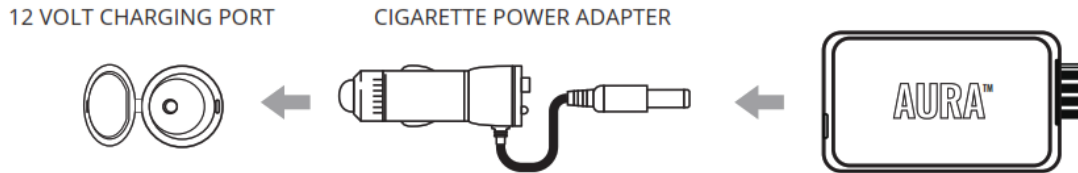
STEP 1

Decide where to locate the light strips and ensure wiring has enough length for the control box to be installed in the desired location.

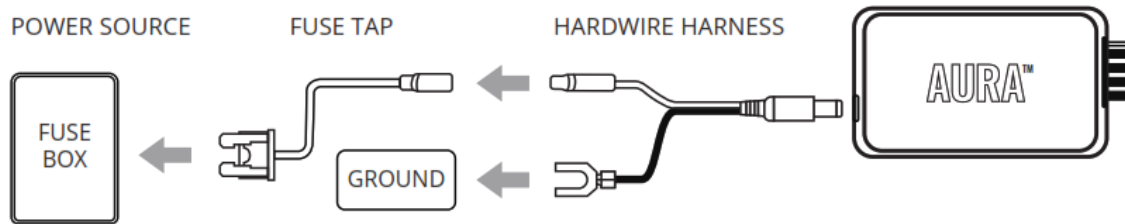
As shown below, connect all light pods to the control box with the included extension cables.



Once connected, plug the control box Cigarette Power Adapter into an available 12 volt charging port.

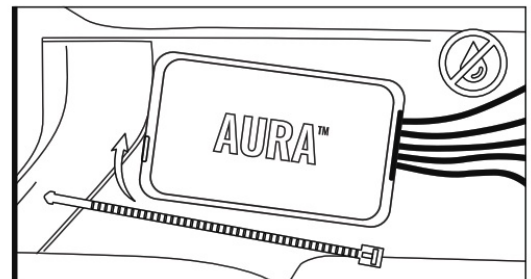


or connect the positive wire to the fuse tap and connector the open negative wire to a ground (any metal surface). Then plug the fuse tap into the 10amp switched fuse.



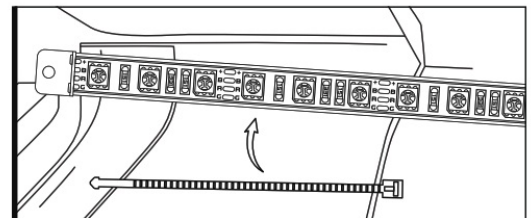
STEP 2

Secure Control box in the desired location with Velcro or zip ties.
 * **CONTROL BOX NOT WATERPROOF** Ensure the control box is safely and securely hidden from exposing elements of moisture.



STEP 3

Secure the light bars using the zip ties to tie all the wiring away from the moving components.



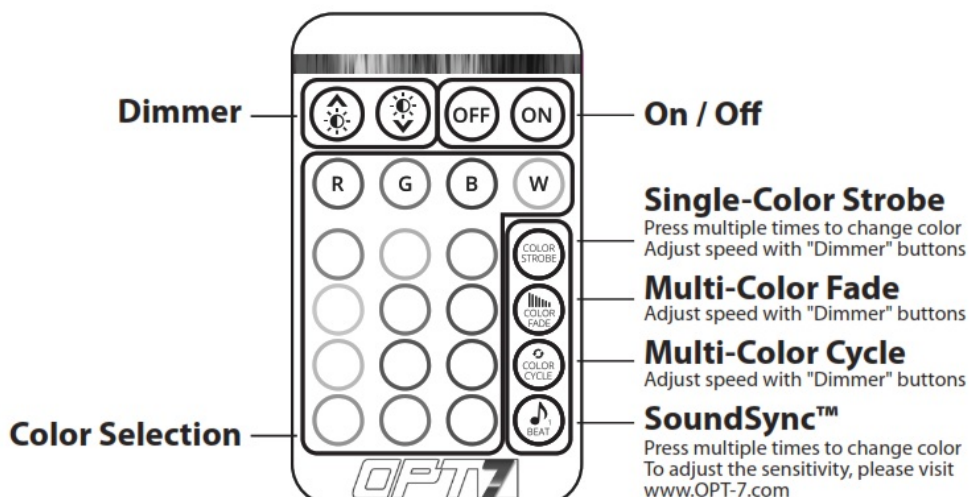
* IMPORTANT:

The LED connectors are not waterproof. You will need to use **HEAT SHRINK TUBE** (not included) or **ELECTRICAL TAPE** around the LED connectors to ensure the longevity of the lighting kit.



STEP 4

Using the included E-Z Remote, select your desired color or pattern.



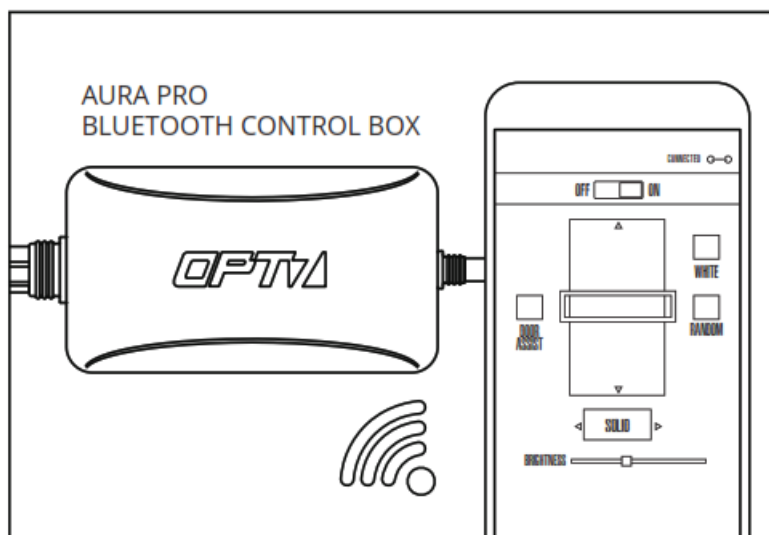
AUX WIRING FOR A DOME/DOOR LIGHT

NOTE: This feature activates white light only.

In order to activate Door Assist Sync, you need to connect the aux wiring of Aura control box to the positive and negative wiring of dome or door light.

OPTIONAL UPGRADE

Upgrade your Aura Original Control Box to the Aura Pro Bluetooth Control Box. All new AURA Pro Bluetooth is App-enabled by a smartphone controller (iOS & Android Compatible).



DISCLAIMER

OPT7 Lighting is not liable for damages or personal injuries while installing this product. The Installation Guide is intended as assistance to reduce setup time. OPT7 Lighting assumes no responsibility for improper installation. If you are unfamiliar with your vehicle or inexperienced with aftermarket upgrades, please seek professional assistance.

NEED SUPPORT?

Scan for tutorial videos, troubleshooting tips, and more.



<http://qr.w69b.com/g/rh6fcCIM0>

OPT7

Documents / Resources

 The diagram is a technical illustration titled 'AURA UNDERBODY INSTALLATION GUIDE' with a sub-header 'MAIN COMPONENTS'. It shows a car's underbody with various components labeled: 'AURA' (the main unit), 'WIRING HARNESS', 'RELAY', 'FUSE', 'GROUNDING POINT', 'WATERPROOFING', and 'MOUNTING BRACKET'. Arrows indicate the placement and connection of these parts. The OPT7 logo is at the bottom.	<p>AURA MAIN COMPONENTS [pdf] Installation Guide MAIN COMPONENTS</p>
---	--

References

- [7 OPT7 - LED & HID Lighting for Cars, Trucks & Motorcycles](#)