

AURA LIGHY Alexa LED
Linear Light



AURA LIGHY Alexa LED Linear Light Installation Guide

[Home](#) » [AURA LIGHY](#) » AURA LIGHY Alexa LED Linear Light Installation Guide 

Contents

- [1 AURA LIGHY Alexa LED Linear Light](#)
- [2 FAQ](#)
- [3 Symbols](#)
- [4 Intended Use And Safety Instructions](#)
- [5 Warranty](#)
- [6 Dimensions](#)
- [7 Installation Instructions](#)
- [8 Contact](#)
- [9 Documents / Resources](#)
 - [9.1 References](#)



AURA LIGHY Alexa LED Linear Light



FAQ

Frequently Asked Questions

- **Can I replace the LED light source myself?**

- Well, the LED light source should only be replaced by the manufacturer or their authorized service agent to maintain product integrity and safety.

- **What is the IP rating of the Alekza luminaire?**

- The Alekza luminaire has an IP66 rating, ensuring protection against dust and high-pressure water jets.

Please read the instruction manual before installation and keep it for future reference.

Symbols



Intended Use And Safety Instructions

Intended Use

- The luminaire is meant for standard use in damp environments and in outdoors areas which are covered by roofs. The luminaire is unsuitable for corrosive atmospheres (e.g. swimming pools, tunnels).

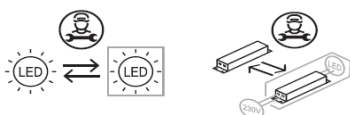
Safety Instructions

- These instructions assume expert knowledge corresponding to a completed professional education as an electrician.
- Never work when voltage is present on the luminaire. Caution – Risk of fatal injury!
- Ensure that the luminaire is undamaged before installation and commissioning!
- The manufacturer is not liable for any damage caused by incorrect or unauthorized use or by non-observance of these instructions.
- Work on the luminaire (installation, maintenance, servicing, troubleshooting) may only be carried out by authorized electrician.

Warranty

5-Year warranty policy

- Aura Light offers a 5-year warranty regarding manufacturing and material defects in products manufactured and/or sold by Aura Light, provided that the product information for the product in question in digital form via www.auralight.com

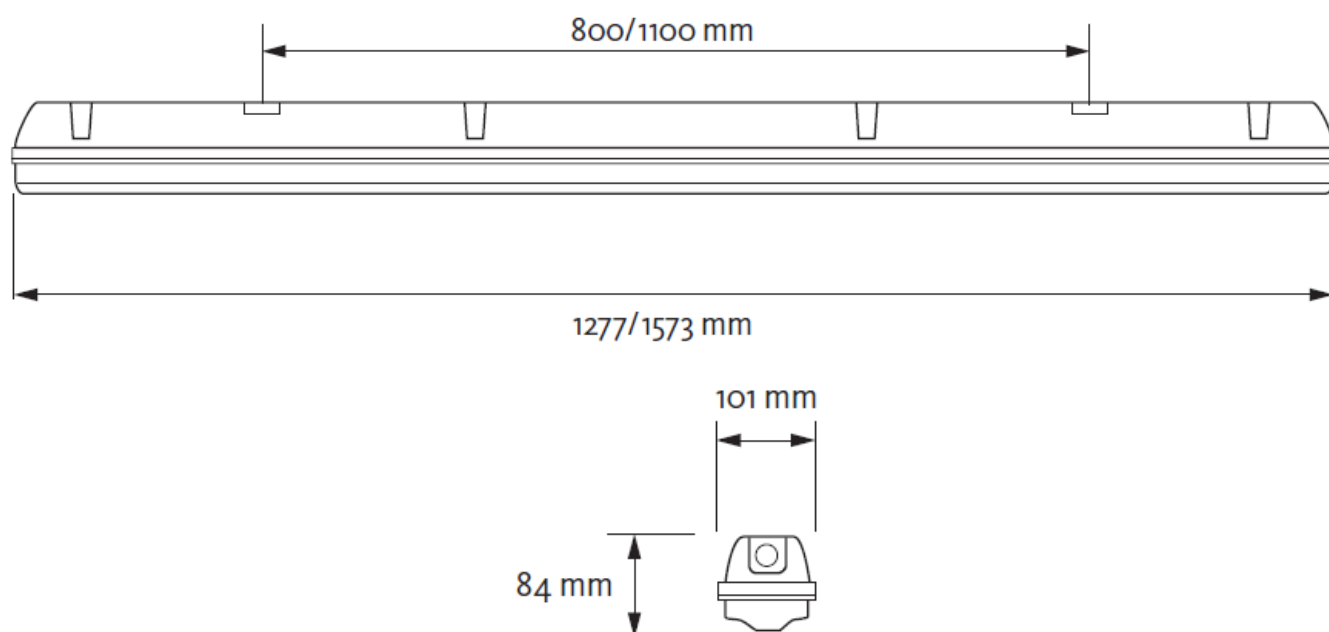


The luminaire contains a control gear and a replaceable LED light source that shall only be replaced by manufacturer or his service agent.



Technical information can be found at www.auralight.com

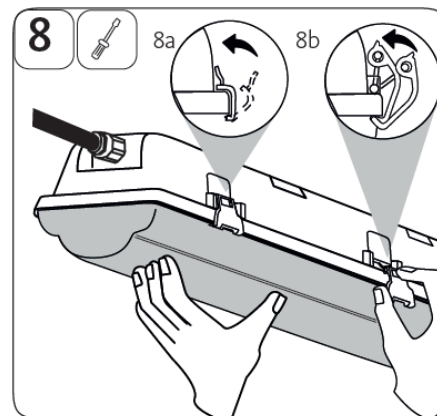
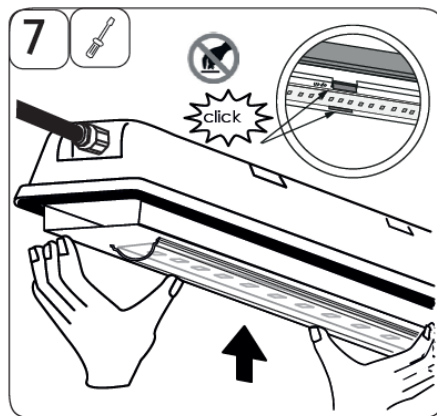
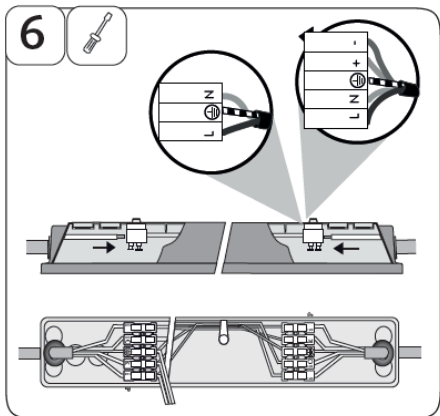
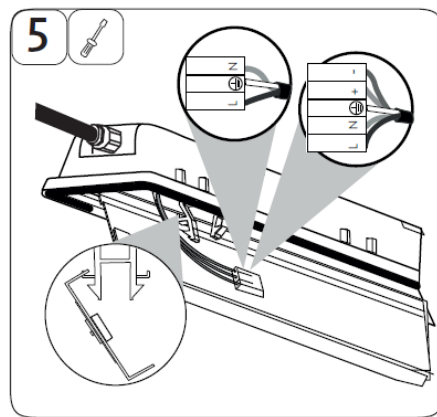
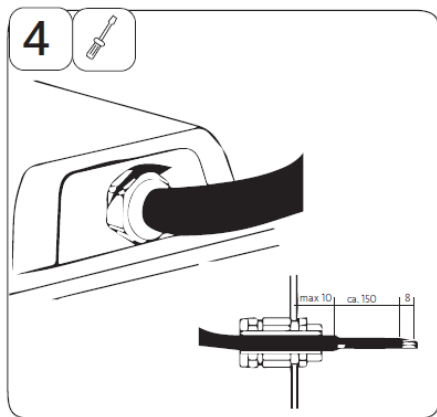
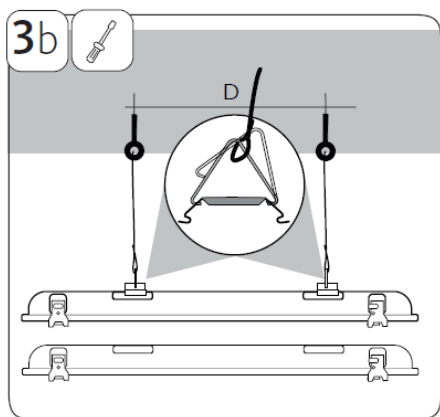
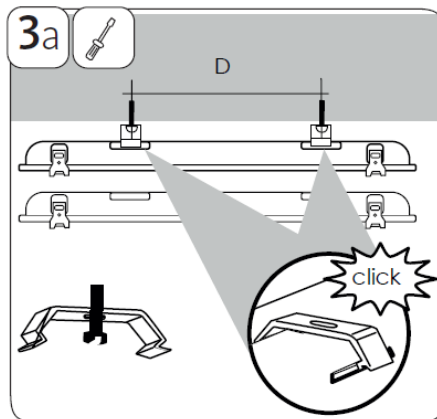
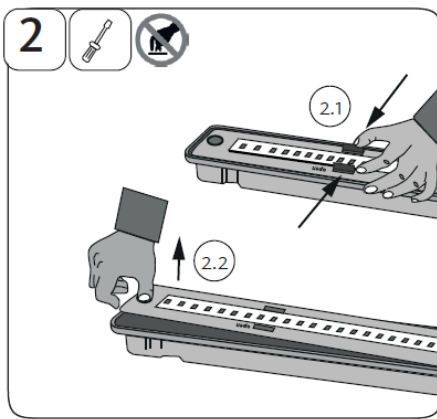
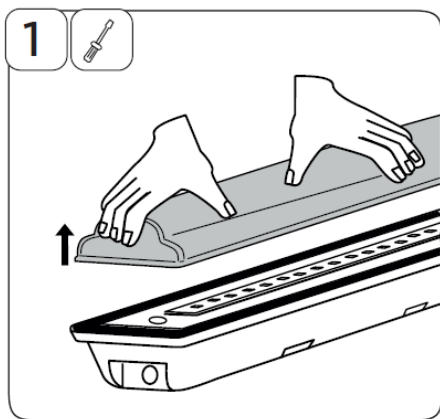
Dimensions



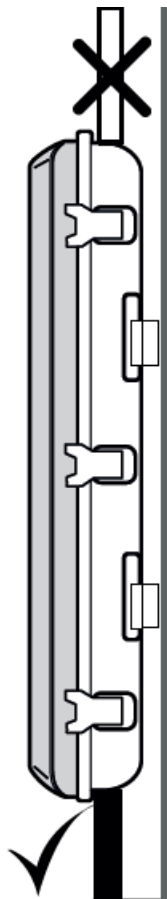
DIMENSIONS	TYPE	L	H	C – C *	kg
	Alekza	1277	84	800	2,0
	Alekza	1573	84	1100	2,4

- +/- 20 mm

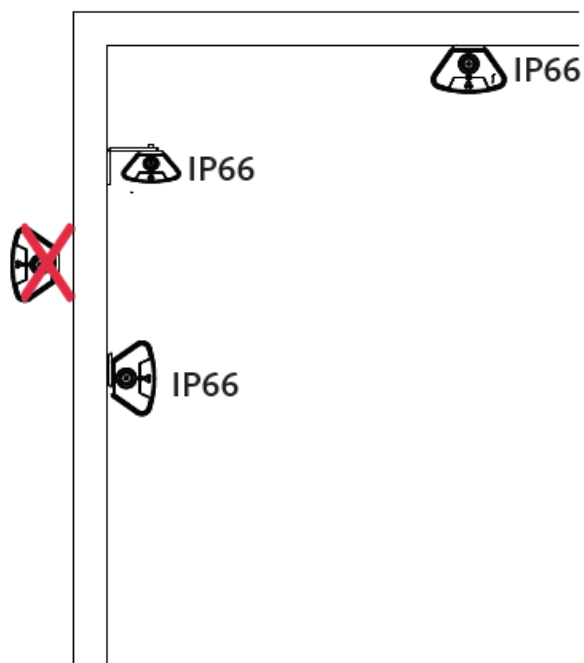
Installation Instructions



Warning: In case of wall mounting, cable entry must be positioned below



IP-rating Alekza




Contact

Aura Light AB, Sweden

- Phone customer service +46 (0)20 32 30 30
- info@auralight.com
- www.auralight.com

Documents / Resources

	<p>AURA LIGHY Alexa LED Linear Light [pdf] Installation Guide</p> <p>18041, 88040, 181400, Alexa LED Linear Light, Alexa, LED Linear Light, Linear Light, Light</p>
---	---

References

- [User Manual](#)

Manuals+. Privacy Policy

This website is an independent publication and is neither affiliated with nor endorsed by any of the trademark owners. The "Bluetooth®" word mark and logos are registered trademarks owned by Bluetooth SIG, Inc. The "Wi-Fi®" word mark and logos are registered trademarks owned by the Wi-Fi Alliance. Any use of these marks on this website does not imply any affiliation with or endorsement.