



# aultop ATMS4002 WiFi Smart Timer and Energy Monitor Instruction Manual

[Home](#) » [aultop](#) » aultop ATMS4002 WiFi Smart Timer and Energy Monitor Instruction Manual 



## WiFi Smart Timer & Energy Monitor Operating Instructions

### Contents

- [1 ATMS4002 WiFi Smart Timer and Energy Monitor](#)
- [2 Register Account](#)
- [3 Add New Device](#)
- [4 Set scheduled programs](#)
- [5 Astronomical Function set Sunrise time](#)
- [6 Astronomical Function set Sunset time](#)
- [7 Share Device](#)
- [8 Create Group](#)
- [9 Count Down Timer](#)
- [10 Relay Status](#)
- [11 Specification](#)
- [12 Connection Diagram and Dimensions](#)
- [13 Documents / Resources](#)
  - [13.1 References](#)

## ATMS4002 WiFi Smart Timer and Energy Monitor

Download and Install Mobile App:

Connect your phone to local Wi-Fi first.

Use your phone to scan the QR code below to Download and install the App.



<https://a.smart321.com/acdcsmartundefined>

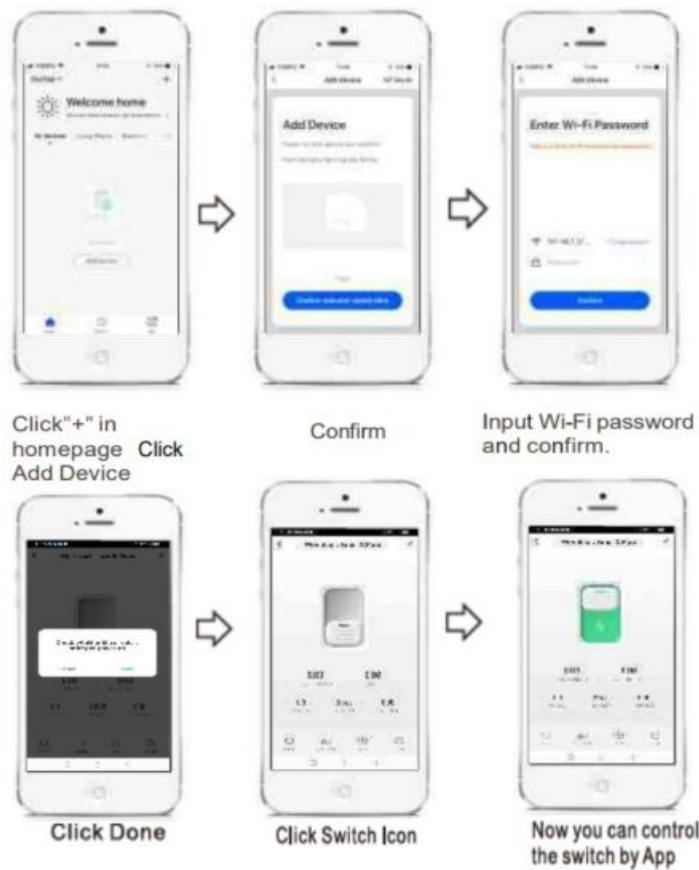
## Register Account



## Add New Device

Connect the Device with the mains supply (100- 250VAC), for the connection diagrams see section 4.  
Press and hold the button for about 5 seconds until the blue Led blinks fast.





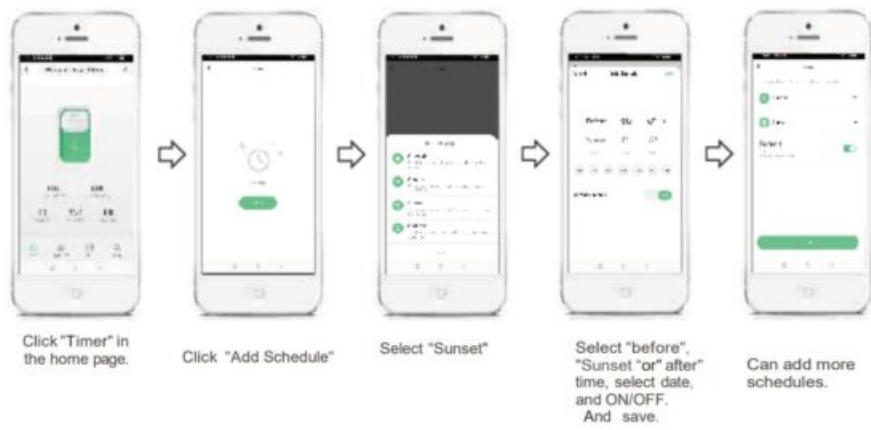
## Set scheduled programs



## Astronomical Function set Sunrise time



## Astronomical Function set Sunset time



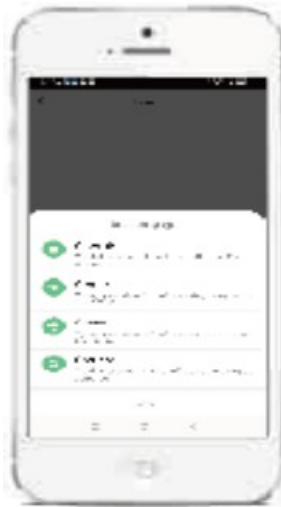
**Circulate Function (Allows user to choose days and times to cycle power on and off, i.e., On for 30 Min and Off for 5min between 6am and 6pm)**



Click Switch Icon Timer” in the home page.



Click Done Click Click Add Scheduler



Select Circulate”



Set the Start Time and End Time, set Hour and Minute



Set Duration and click save” in the upper right corner



Can Add more.

## Meter Function



Click “Electricity” in the home page.

The App can display:

Power (W),

Current (mA),

Voltage (V),

Daily Consumption: (KWh)

Monthly Consumption: (KWh)

Total Consumption: (KWh),

When the measured power is less than 3 W, the App displays Power(W) and Current (mA) as both “0”, but as the consumption accumulates the meter will account and measure.

## 7.2 Modify Device Name



Click this icon. in the upper right corner



Click this icon: L. in he upper



Click "Name"



Change the name, and c

## Share Device



Click "Timer" in. the home page



Click "Share Device"



Click "Add Sharing",



Input the cell phone number and Click.

## Create Group





## Count Down Timer



Click "Setting" in the home page.



Select "Count down" on the home page



Set the Hour and Min click "Confirm", then the timer will be ON or OFF,

## Relay Status



Click this icon: L. in the upper right corner



Click "Relay Status"



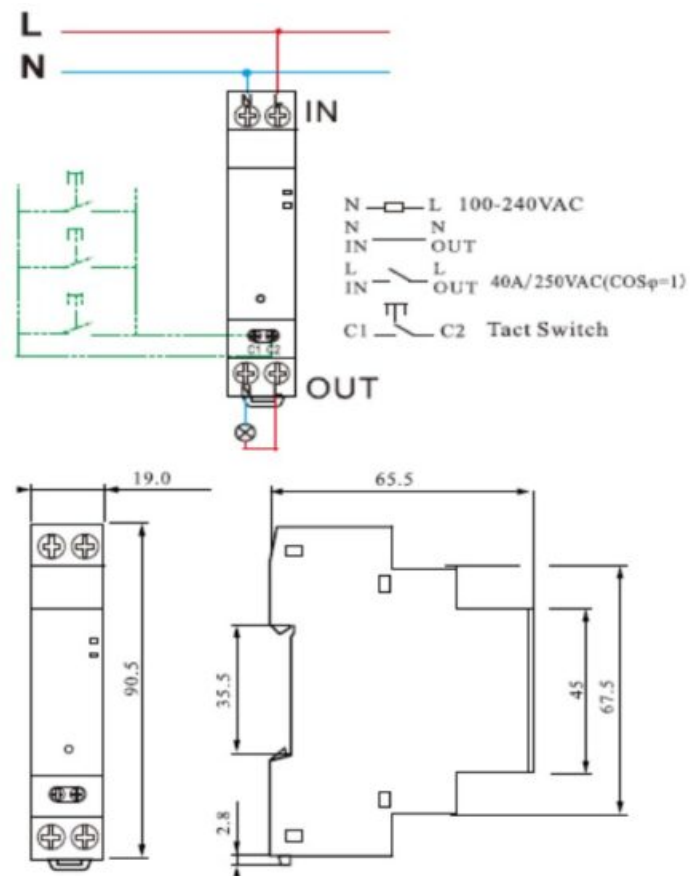
Select the Relay Status

## Specification

- Rated Voltage: 100-240VAC 50-60HZ
- Rated Current: 40A 250VAC(Cos(j) 1)
- Contact Configuration: 1NO(SPST-NO)
- Wi-Fi Frequency: 2.4GHZ
- Mounting: DIN RAIL 35 mm (EN60715)
- Ambient temperature range: (-10°C to 60°C)
- Can set 30 ON/OFF programs per day or per week.
- Countdown time, from 1 Min to 23 hours 59 Mins.
- If the product is disconnected from the network, the timer retains all programs set up by Mobile App and works according to the set programs.
- With memory function, When the product contact is in the close state, after a power failure\ the product contacts keep the close state.
- Can be controlled by tactile switch from terminal C1 & C2.
- Can be shared with 20 users by Mobile App.

- Limit current 40A, if load exceeds 60A, the product will automatically disconnect load circuit.
- With Bluetooth function, when the WIFI signal is disconnected for 5 minutes, you can use the mobile APP to control the on and off the product through Bluetooth.

## Connection Diagram and Dimensions



**Ourtop®**

## Documents / Resources



[a ultop ATMS4002 WiFi Smart Timer and Energy Monitor](#) [pdf] Instruction Manual  
ATMS4002 WiFi Smart Timer and Energy Monitor, ATMS4002, WiFi Smart Timer and Energy Monitor, Timer and Energy Monitor, Energy Monitor

## References

- [User Manual](#)

[Manuals+](#), [Privacy Policy](#)

This website is an independent publication and is neither affiliated with nor endorsed by any of the trademark owners. The "Bluetooth®" word mark and logos are registered trademarks owned by Bluetooth SIG, Inc. The "Wi-Fi®" word mark and logos are registered trademarks owned by the Wi-Fi Alliance. Any use of these marks on this website does not imply any affiliation with or endorsement.