



**F87 3-Mode  
Mechanical  
Keyboard-30s**



# AULA F87 3-Mode Mechanical Keyboard-30s User Guide

[Home](#) » [AULA](#) » AULA F87 3-Mode Mechanical Keyboard-30s User Guide 

## Contents

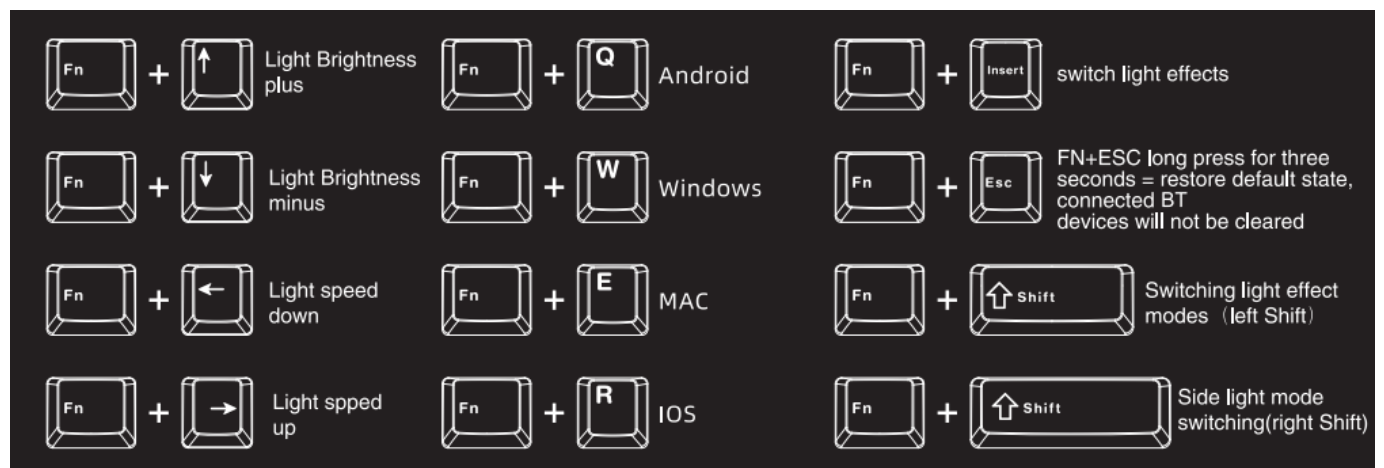
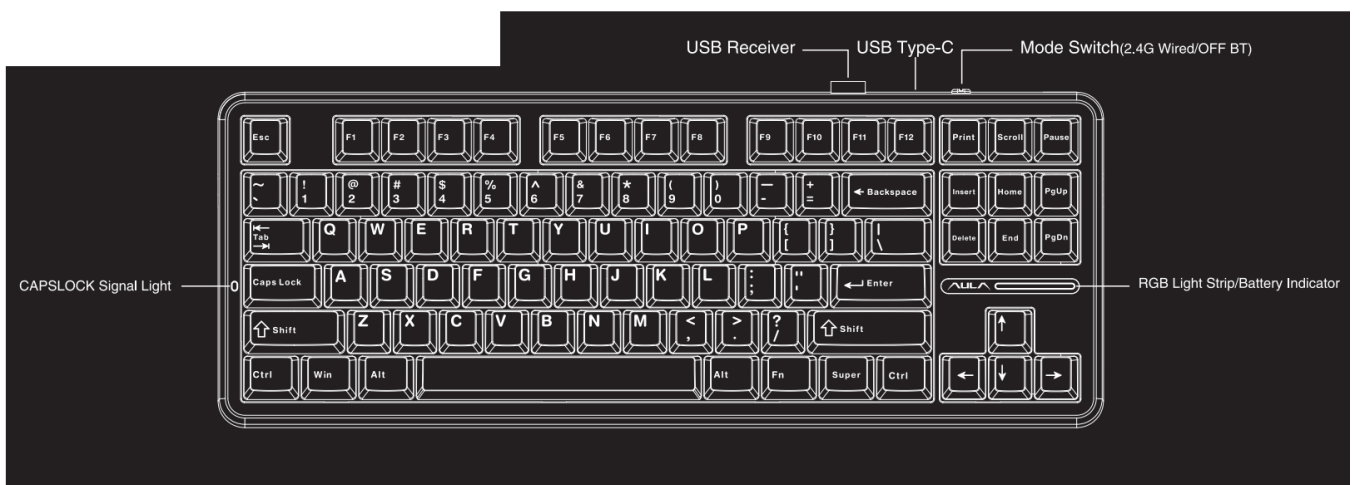
- [1 AULA F87 3-Mode Mechanical Keyboard-30s](#)
- [2 Product Overview](#)
- [3 2.4G Connection 1](#)
- [4 BT Connection](#)
- [5 Wired Connection](#)
- [6 Documents / Resources](#)
  - [6.1 References](#)



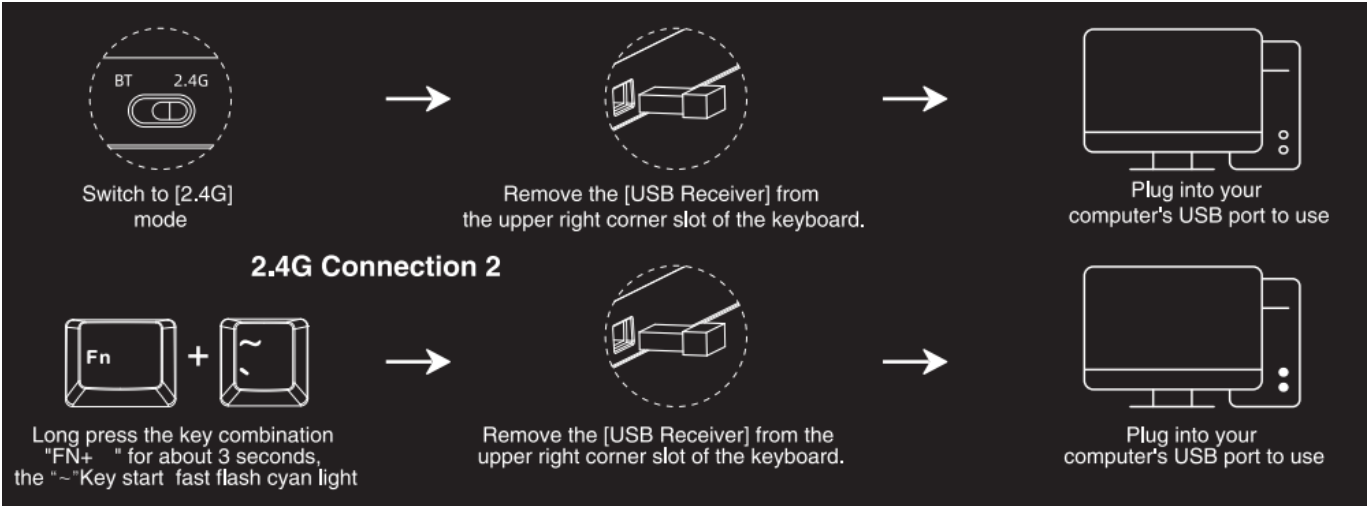
**AULA F87 3-Mode Mechanical Keyboard-30s**



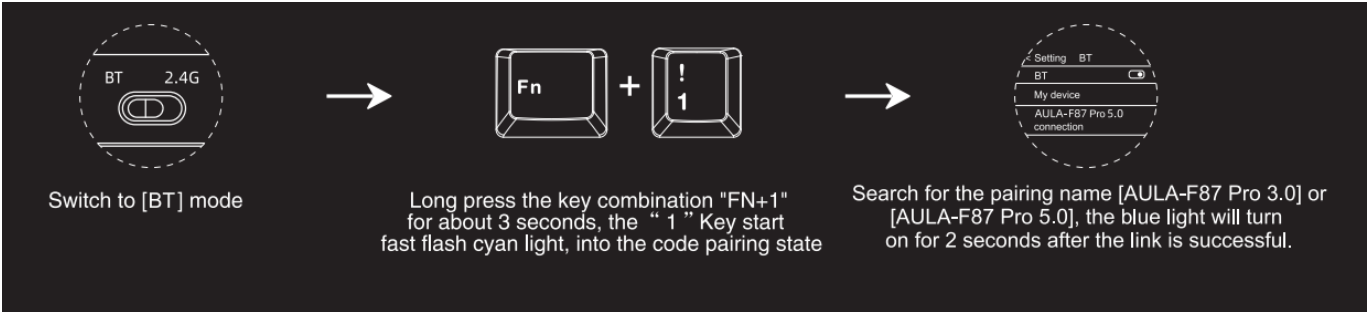
## Product Overview



2.4G Connection 1

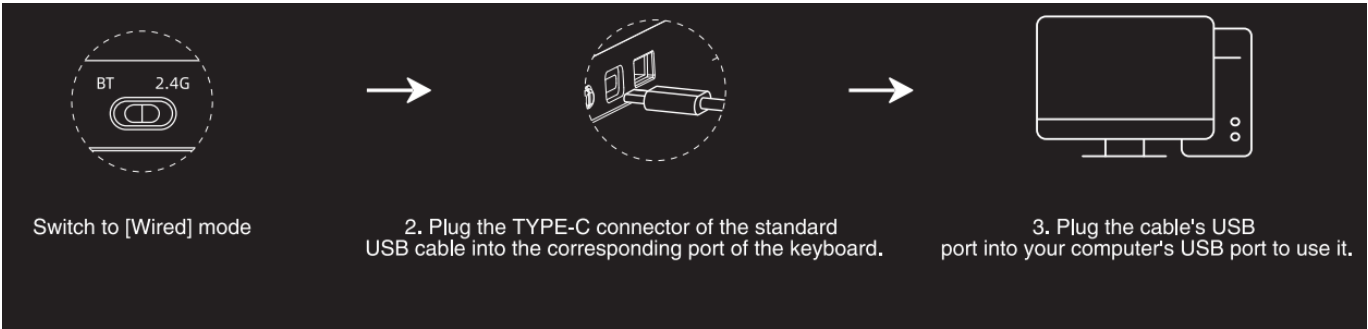


BT Connection



Note: BT2 and BT are connected in the same way as BT1. BT2 can be connected by pressing the combination key [FN+2@], BT 3 can be connected by pressing the combination key [FN+3#; The blue light blinks slowly when BT is connected again.

Wired Connection



For additional features, please refer to the product brochure.

Documents / Resources

	<a href="#">AULA F87 3-Mode Mechanical Keyboard-30s</a> [pdf] User Guide F87, F87 3-Mode Mechanical Keyboard-30s, F87 Mechanical Keyboard, 3-Mode Mechanical Keyboard, 3-Mode Mechanical Keyboard, Mechanical Keyboard-30s, Mechanical Keyboard, Keyboard
--	--

References

- [User Manual](#)

## **Manuals+. Privacy Policy**

This website is an independent publication and is neither affiliated with nor endorsed by any of the trademark owners. The "Bluetooth®" word mark and logos are registered trademarks owned by Bluetooth SIG, Inc. The "Wi-Fi®" word mark and logos are registered trademarks owned by the Wi-Fi Alliance. Any use of these marks on this website does not imply any affiliation with or endorsement.