



## Augmented Vision Labs S5 Inserter User Manual

[Home](#) » [AUGMENTED VISION LABS](#) » Augmented Vision Labs S5 Inserter User Manual 

# AUGMENTED REALITY

S5 Inserter™  
Vision Labs S5 Inserter  
User Manual



## Contents

- [1 SAFETY PRECAUTIONS](#)
- [2 WARRANTY INFORMATION](#)
- [3 A MESSAGE FROM OUR FOUNDER](#)
- [4 DEVICE DESCRIPTION](#)
- [5 DEVICE MAINTENANCE](#)
- [6 INSTRUCTIONS FOR USE](#)
- [7 AFTER LENS INSERTION](#)
- [8 DEMONSTRATION VIDEO](#)
- [9 A SPECIAL OFFER FOR S5 INSERTER™ USERS](#)
- [10 Documents / Resources](#)
  - [10.1 References](#)
- [11 Related Posts](#)



## SAFETY PRECAUTIONS

1. Please consult with your eyecare provider for instructions on how to clean and maintain your lenses. Your doctor will recommend the appropriate lens cleaning and maintenance products that you should use with your lenses.
2. If you experience pain or a decrease in the quality of your vision after using the S5 Inserter™ stop using the device and contact your eyecare provider immediately.
3. Lens Holder:
  - a. Please read the insert for the provided lens holder before using it.
  - b. ALLERGY NOTICE: The lens holder provided with the S5 Inserter™ (known as the DMV® Vented Scleral Cup™ Synergy Eyes® Model) contains latex.
  - c. The lens holder provided with the S5 Inserter™ is only intended for use in lens insertion. Do not use the provided lens holder during lens removal.
  - d. CHOKING HAZARD: Keep the lens holder, its case and the “extra bright” lens holder dock provided with your device out of the reach of children.

## WARRANTY INFORMATION

Your S5 Inserter™ comes with a 1 year warranty which covers the replacement of any device components that fail to operate as expected due to a manufacturer defect. \*Eligibility for this warranty requires registration of your device within 60 days of receiving it. Register your device at <https://augmentedvisionlabs.com/warranty/> or by clicking the button below.

**Submit Warranty Registration**

## A MESSAGE FROM OUR FOUNDER

Thank you for purchasing the S5 Inserter™. I designed this device to eliminate the frustration that my patients had with inserting their scleral and hybrid lenses and I hope that it will do the same for you. Please don't hesitate to reach out to me via phone, text or email if you have any questions or if there is any way that we can be of assistance to you.

My contact information is included below as well as on the business card that was provided with your device. If you're open to sharing any feedback about your experience with your device, or about how we can better support you, I would very much appreciate it.

Best wishes,  
Fayez Mahout, OD  
Founder, Augmented Vision Labs, LLC  
Email: [fayiz@augmentedvisionlabs.com](mailto:fayiz@augmentedvisionlabs.com)  
Cell: 970-402-5789

## DEVICE DESCRIPTION

The S5 Inserter™ was designed to make struggling with scleral and hybrid lens insertion a thing of the past. The device allows for hands free stabilization of your lens which enables you to have two hands available to hold your eyelids open. This will allow you to more effectively counter the human blink reflex which is often triggered when the lens is on or near the eye. Lens stabilization will also help reduce accidental spilling of the saline solution during insertion which will reduce the chance of air bubbles getting trapped under the lens. The device also features a light source to help you align your eye with the center of the lens during insertion.

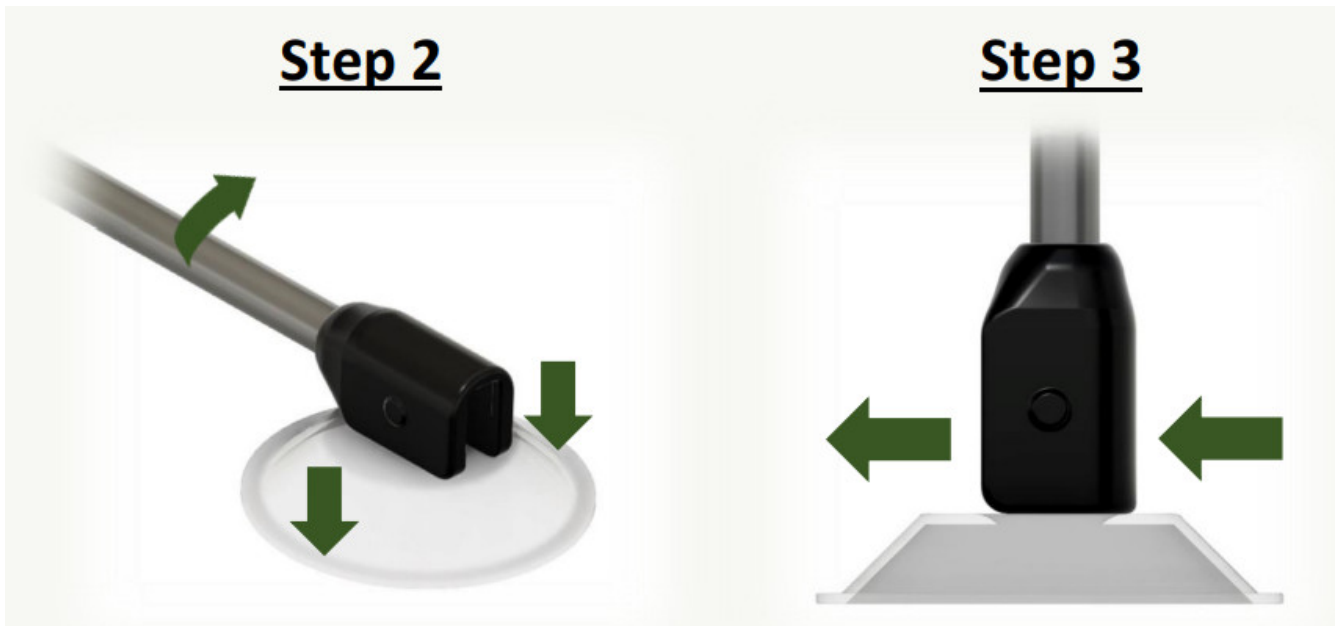
## DEVICE MAINTENANCE

1. Please clean the rubber lens holder with an alcohol wipe before every use and allow it to dry completely before placing a lens on it.
2. Immediately after inserting your lenses, take a moment to remove any liquid that may have spilled onto your device. Do not disconnect the light unit from the telescoping arm until after you have dried the outside of the light unit with a paper towel. This will help prevent water from getting into the electronic components of your device.
3. It's important to make sure that the storage case for your device is completely dry before storing the device in it. If you place containers in the storage case that hold liquids (ex. contact lens cases), please ensure that they are securely closed to prevent liquid damage to your device.
  - a. It's recommended that you use an alcohol wipe to clean the outside of the device as well as the storage case at least once per week. After cleaning, make sure that all parts are completely dry before storing them.
4. The bottom of the suction base should be cleaned periodically with an alcohol wipe to ensure maximum suction.
5. Charging the light unit:
  - a. When you notice the light becoming dim, it's time to charge the light unit.
    - i. Connect the female end of the provided USB extension cable to the bottom of the light unit.
    - ii. Connect the male end of the cable to a desktop or laptop computer.
  - b. The light unit will reach a full charge after 1 hour of being plugged in.
6. Adjusting the light brightness:
  - a. If you notice that the light is dim after a full charge, then it's time to switch the lens holder dock to the "extra bright" lens holder dock that was provided with your device.
    - i. Ensure that your light unit is tuned off.
    - ii. Hold the top half of the light unit in place and twist off the orange lens holder dock by twisting it counterclockwise.
    - iii. Install the "extra bright" lens holder dock that was provided with your device and screw it in place firmly.
    - iv. Turn on the light unit and enjoy the increased brightness.

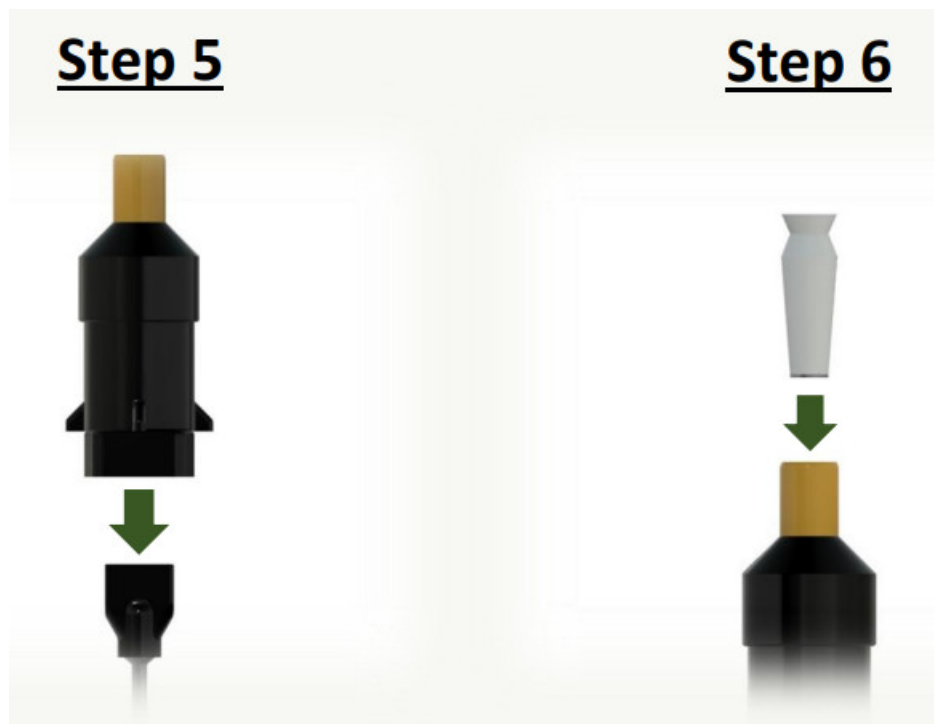
## INSTRUCTIONS FOR USE

### BEFORE LENS INSERTION

1. Place the suction base on a smooth, flat surface. Ensure that both the bottom of the suction base and the surface are clean and dry.
2. Hold down the outer edge of the suction base while pulling metal telescoping arm upward until it locks into place in the vertical position. This will engage the suction of the base.
3. Once the telescoping arm is in the vertical position, slide the base of the arm forward for increased stability (see picture below).



4. Extend the telescoping arm to the desired height.
  - a. \* It's recommended that you keep the height as low as possible when you are first learning to use the device to reduce the chance of your lens being accidentally bumped off the lens holder and falling from a high distance. This could cause the lens to become lost or damaged. When you become confident in your ability to consistently insert the lens without it falling, you can increase the height to your preferred height for lens insertion
5. Connect the light unit to the top of the telescoping arm.
6. Connect the rubber lens holder to the top of the light unit.



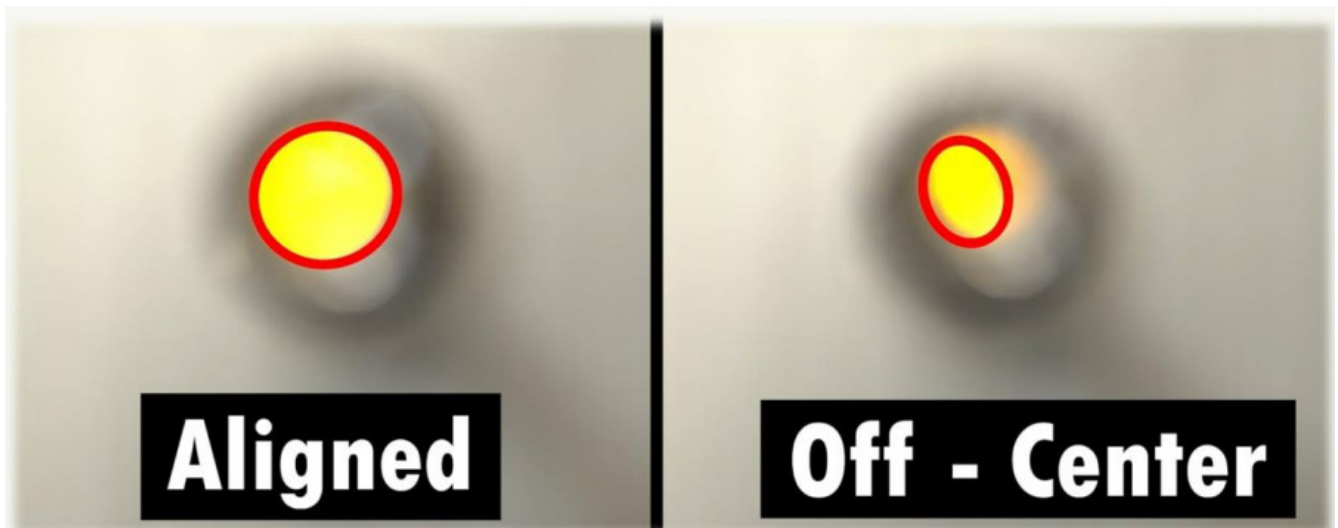
7. Wash your hands with soap for 20 seconds and dry them with a lint-free towel.
8. Clean the rubber lens holder with a disinfecting alcohol wipe.
  - a. \*Allow the lens holder to dry completely before placing your contact lens on it.
9. Clean the upper segment of the light unit (the part that twists) with a disinfecting alcohol wipe.
  - a. You can use the same wipe that you previously used to clean the lens holder.
10. Inspect your lens to make sure it is clean and free of damage then place it on the rubber lens holder.
  - a. It's recommended to rinse your lens with preservative free saline if it was previously stored in a multi-purpose cleaning solution.
11. Fill the lens bowl with a preservative-free saline solution that is approved by your doctor.
  - a. Add saline until the level rises above the edge of the lens.
12. Twist the top half of the light unit counterclockwise to activate the light.

## **LENS INSERTION**

1. Place your head directly over the lens, making sure that it is level with the surface that the base was placed on.  
Your chin should be tucked in toward your chest.
2. Use both hands to firmly hold your upper and lower eyelids open.
  - a. Tip: Placing your finger as close as possible to your eyelashes (without touching your eyelashes) will give you the best grip on your eyelids.



3. Keep both eyes open and slowly move your head down toward the lens until your eye makes contact with the lens.
  - a. **Tip:** Focus on the light as you move closer to the lens. The light will look perfectly round if you are lined up with the center of the lens. If the light does not look round, you will need to adjust the position of your head until it does.



- b. It is normal for saline to spill out of the lens bowl when your eye makes contact with the lens. Once you feel that the lens has made contact with your eye, move your head back up and away from the device and slowly release your eyelids.
4. Once you feel that the lens has made contact with your eye, move your head back up and away from the device and slowly release your eyelids.
5. Twist the top half of the light unit clockwise to turn off the light.
6. For your second eye:
  - a. Repeat steps 10 through 12 in the “Before Lens Insertion” section to prepare your second lens for insertion.
  - b. Repeat steps 1 through 5 in the “Lens Insertion” section to insert your second lens.
7. Cover one eye at a time to see if you can notice any air bubbles that may be trapped under the lens. It may be helpful to use a mirror and a flashlight to check for air bubbles.
  - a. If air bubbles are seen, you must remove the lens and re-insert it.

## **AFTER LENS INSERTION**



Please carefully follow the instructions below to keep liquid away from the electronics of your device. Following these instructions will extend the operational life of your device.

1. Remove the rubber lens holder from the light unit.
2. Keep the light unit connected to the telescoping arm and dry off the outside of the light unit with a paper towel.
3. Disassemble the device:
  - a. Disconnect the light unit from the telescoping arm.
4. Additional drying for the light unit:
  - a. Turn the light unit upside down to get rid of any liquid that has built up inside the orange lens holder dock.
  - b. If you see liquid on or near the USB port of the light unit, soak it up with a paper towel or a q-tip. If there is no liquid on the USB port, then please avoid touching it.
5. Detach the base:
  - a. Collapse the telescoping arm down to its shortest height.
  - b. Push the telescoping arm to the horizontal position to break the suction of the base.
    - i. If the suction doesn't release right away, it may be necessary to use a fingernail or a business card to separate the edge of the base from the surface that it is suctioned to.
6. Drying the telescoping arm and base:
  - a. Turn the telescoping arm upside down and shake well to remove any liquid that is trapped between the segments.
  - b. Extend the telescoping arm to its full length and use a dry paper towel to remove all remaining moisture on the telescoping arm and the suction base.
7. Please ensure that the storage case used to store the device is completely dry before using it to store your device. This is important for reducing the growth of microbes in the storage case as well as reducing the chance of moisture causing damage to the electronics of your device.
  - a. It's recommended that you use alcohol or another disinfecting solution to clean the inside and outside of your storage case at least once per week. After cleaning, make sure that the case dries completely before using it to store your device and lens accessories.

## **DEMONSTRATION VIDEO**

We created this video to give you a visual demonstration of good techniques for lens insertion. Please read the complete set of instructions in the user manual before watching the video as they contain important tips for lens insertion and device maintenance that are not included in the video.



### **A SPECIAL OFFER FOR S5 INSERTER™ USERS**

As a token of our appreciation for your support, we would like to extend you a \$50 credit that can be used towards the purchase of any new device on our website.

To take advantage of this limited time offer, please click the button below to complete our proof of purchase form. We will then send you a custom code to apply your credit to the purchase of a new device through our website.

**Submit Warranty Registration**

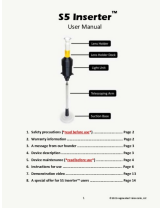
### **3 WAYS TO USE YOUR \$50 CREDIT**

1. Get a second device to help with lens insertion when you are away from home.
2. Try out the S5 Mini™ which is optimized for lens insertion while sitting down and features a compact size that is convenient for traveling.
3. Gift a device to a friend or family member who can benefit from using one.





## Documents / Resources

	<p><a href="#">Augmented Vision Labs S5 Inserter</a> [pdf] User Manual S5 Inserter, Inserter</p>
---	--

## References

- [AVL Proof of Purchase Form - Augmented Vision Labs™](#)
- [AVL Support - Augmented Vision Labs™](#)