



# audizio RP310 Record Player HQ Instruction Manual

[Home](#) » [audizio](#) » audizio RP310 Record Player HQ Instruction Manual 

## Contents

- [1 audizio RP310 Record Player HQ](#)
- [2 UNPACKING INSTRUCTION](#)
- [3 PRODUCT OVERVIEW](#)
- [4 GETTING STARTED](#)
- [5 DRIVE BELT ASSEMBLY](#)
- [6 CONNECTING WITH A COMPUTER](#)
- [7 SOFTWARE CONFIGURATION](#)
- [8 TECHNICAL SPECIFICATION](#)
- [9 Documents / Resources](#)
  - [9.1 References](#)
- [10 Related Posts](#)



**audizio RP310 Record Player HQ**



Congratulations to the purchase of this Audizio product. Please read this manual thoroughly prior to using the unit in order to benefit fully from all features.

Read the manual prior to using the unit. Follow the instructions in order not to invalidate the warranty. Take all precautions to avoid fire and/or electrical shock. Repairs must only be carried out by a qualified technician in order to avoid electrical shock. Keep the manual for future reference.

- Prior to using the unit, please ask advice from a specialist. When the unit is switched on for the first time, some smell may occur. This is normal and will disappear after a while.
- The unit contains voltage carrying parts. Therefore do NOT open the housing.
- Do not place metal objects or pour liquids into the unit. This may cause electrical shock and malfunction.
- Do not place the unit near heat sources such as radiators, etc. Do not place the unit on a vibrating surface. Do not cover the ventilation holes.
- The unit is not suitable for continuous use.
- Be careful with the mains lead and do not damage it. A faulty or damaged mains lead can cause electrical shock and malfunction.
- When unplugging the unit from a mains outlet, always pull the plug, never the lead.
- Do not plug or unplug the unit with wet hands.
- If the plug and/or the mains lead are damaged, they need to be replaced by a qualified technician.
- If the unit is damaged to such an extent that internal parts are visible, do NOT plug the unit into a mains outlet, and DO NOT switch the unit on. Contact your dealer. Do NOT connect the unit to a rheostat or dimmer.
- To avoid fire and shock hazards, do not expose the unit to rain and moisture.
- All repairs should be carried out by a qualified technician only.
- Connect the unit to an earthed mains outlet (220-240Vac/50Hz) protected by a 10-16A fuse.
- During a thunderstorm or if the unit will not be used for a longer period of time, unplug it from the mains. The rule is: Unplug it from the mains when not in use.
- If the unit has not been used for a longer period of time, condensation may occur. Let the unit reach room temperature before you switch it on. Never use the unit in humid rooms or outdoors.

- To prevent accidents in companies, you must follow the applicable guidelines and follow the instructions.
- Do not repeatedly switch the fixture on and off. This shortens the lifetime.
- Keep the unit out of the reach of children. Do not leave the unit unattended.
- Do not use cleaning sprays to clean switches. The residues of these sprays cause deposits of dust and grease. In case of malfunction, always seek advice from a specialist.
- Do not force the controls.
- This unit is with a speaker inside which can cause a magnetic field. Keep this unit at least 60cm away from the computer or TV.
- If this product has a built-in lead-acid rechargeable battery. Please recharge the battery every 3 months if you are not going to use the product for a long period of time. Otherwise the battery may be permanently damaged.
- If the battery is damaged please replace with same specifications battery. And dispose the damaged battery environment friendly.
- If the unit has fallen, always have it checked by a qualified technician before you switch the unit on again.
- Do not use chemicals to clean the unit. They damage the varnish. Only clean the unit with a dry cloth.
- Keep away from electronic equipment that may cause interference.
- Only use original spares for repairs, otherwise serious damage and/or dangerous radiation may occur.
- Switch the unit off prior to unplugging it from the mains and/or other equipment. Unplug all leads and cables prior to moving the unit.
- Make sure that the mains lead cannot be damaged when people walk on it. Check the mains lead before every use for damages and faults!
- The mains voltage is 220-240Vac/50Hz. Check if power outlet match. If you travel, make sure that the mains voltage of the country is suitable for this unit.
- Keep the original packing material so that you can transport the unit in safe conditions.

## CAUTION

- This mark attracts the attention of the user to high voltages that are present inside the housing and that are of sufficient magnitude to cause a shock hazard.
- This mark attracts the attention of the user to important instructions that are contained in the manual and that he should read and adhere to.

The unit has been certified CE. It is prohibited to make any changes to the unit. They would invalidate the CE certificate and their guarantee!

**NOTE:** To make sure that the unit will function normally, it must be used in rooms with a temperature between 5°C/41°F and 35°C/95°F.

Electric products must not be put into household waste. Please bring them to a recycling centre. Ask your local authorities or your dealer about the way to proceed. The specifications are typical. The actual values can slightly change from one unit to the other. Specifications can be changed without prior notice.

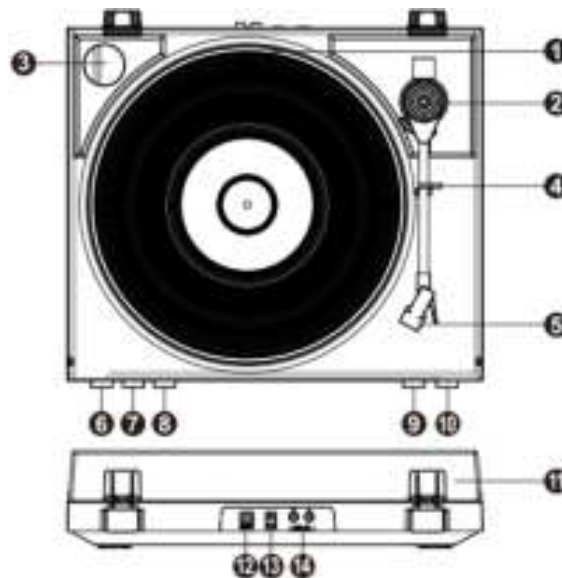
Do not attempt to make any repairs yourself. This would invalid your warranty. Do not make any changes to the unit. This would also invalid your warranty. The warranty is not applicable in case of accidents or damages caused by inappropriate use or disrespect of the warnings contained in this manual. Audizio cannot be held responsible for personal injuries caused by disrespect of the safety recommendations and warnings. This is also applicable to all damages in whatever form.

## UNPACKING INSTRUCTION

**CAUTION!** Immediately upon receiving the product, carefully unpack the carton, check the contents to ensure that all parts are present, and have been received in good condition. Notify the shipper immediately and retain the packing material for inspection if any parts appear damage from shipping or the package itself shows signs of mishandling. Save the package and all packing materials. In the event that the product must be returned to the factory, it is important that the product be returned in the original factory box and packing.

If the device has been exposed to drastic temperature fluctuation (e.g. after transportation), do not switch it on immediately. The arising condensation water might damage your device. Leave the device switched off until it has reached room temperature.

## PRODUCT OVERVIEW



### 1. Platter

Place your record here.

### 2. Tonearm

### 3. 45 RPM adapter

This adaptor allows you to play 45RPM records.

### 4. Tonearm clip

This specially designed arm clip secures the tonearm while at rest or when not in use. The arm clip has been designed to remain in the up position while unlocked.

### 5. Cartridge with needle

When the turntable is not in use, it is recommendable to place the removable protection cover over the stylus.

### 6. Power ON/OFF button

Push the Power On/Off button on the unit to turn on/off the turntable.

### 7. Speed button

This switch controls the RPM of the turntable platter.

### 8. Start/Stop button

Press the START/STOP button to start the turntable ; push it again to stop it.

### 9. Return

Press to force the tonearm to return to the arm-rest position.

### 10. Lift

Press to lift the tonearm. Move the tonearm gently to the desired position above the vinyl record. Push the lift button again to lower the tonearm slowly onto the record to begin playback.

#### 11. **Dust cover**

#### 12. **USB port**

Use the included USB cable to connect your turntable to your computer. The USB connection will send audio from the turntable to your computer.

#### 13. **DC input**

Connect the power adapter.

#### 14. **RCA line output**

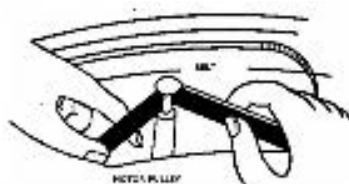
Line signal RCA connectors to connect the record player to a mixer or an amplifier.

### **GETTING STARTED**

1. Connect an external amplifier or speaker system via the RCA output connector. NOTE: the RCA cables are color-coded. The red plug cable must be plugged into the red connector on both the record player and external amplifier or speaker system. The white plug cable must be plugged into the white connector on both the record player and external amplifier or speaker system.
2. Insert the DC plug of the adapter firmly and securely in the DC IN connector on the back of the unit. Connect the other end of the adapter cable to a power outlet.
3. Before use: remove the needle protection cover.

### **DRIVE BELT ASSEMBLY**

Although the best care has been put into the production of this record player and its mechanical components, the situation can occur that the drive belt could come loose (for example during transport). If so, please follow the below steps to put the belt back onto the motor pulley.



- **A.** Remove the rubber mat from the turntable platter and the E ring from the turntable shaft. Release the turntable platter from the shaft.
  - **B.** Put the drive belt on the inner rim of the turntable platter and put the platter back over the shaft.
  - **C.** Hold the belt with your fingers and place the belt onto the motor pulley as shown in the drawing.
  - **D.** Clip the E ring back on the shaft and place the rubber mat onto the turntable platter.
- Note:** avoid oil on the belt as the oil will make the belt slippery. Please make sure that the belt is not distorted or twisted.

### **CONNECTING WITH A COMPUTER**

Before you connect the turntable to a computer, unplug it from your mixer or Hi-Fi system. The included software is a third-party application and therefore Audizio does not handle any questions or problems regarding the software.

1. Turn the computer on
2. If the computer is booted, connect the turntable. The computer will now install the drivers.

3. After the drivers are installed, you must now install the Audacity software.

Windows users: insert the CD or download the newest software via <http://audacity.sourceforge.net> MAC users: download the newest software via <http://audacity.sourceforge.net>

### To Install Software (PC)

1. Plug in your turntable to an power supply and connect the USB port on the Turntable to the USB port of your computer.
2. Turn on the power switch to your turntable.
3. The Windows system will detect a new device and indicate that it is available to use.
4. Insert the CD that came with your USB turntable.
5. Run the file to install the Audacity software. Once installed, run the Audacity program.

### To Install Software (MAC)

1. Insert the included CD.
2. Open the CD icon on the desktop.
3. Drag the installation folder for audacity to your hard drive. We recommend that you move the folder to your "Applications" folder.
4. A window will come up which shows the files copying.
5. EJECT the CD.
6. Open "Audacity" from where you moved it to on your hard drive.

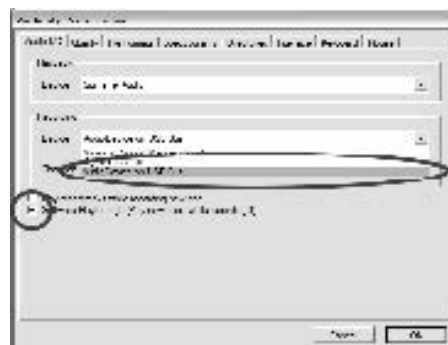
## SOFTWARE CONFIGURATION

1. Click on Microphone in the drop down menu and select "Stereo Mix".



2. Select the "Edit" menu and then "Preferences"

Select the USB audio device under the "Recording" selection as shown. Select "Software Playthrough" to hear the audio while recording.



3. After the above settings are completed, you are ready for recording. If you are still having difficulties in finding the USB Turntable, try to check your system settings or control panel to adjust the audio input settings from the

sound control panel.

**Note:** The attached Audacity software is for reference only. For more information and latest software version, please check the website: <http://www.audacity.com>

## TECHNICAL SPECIFICATION

- **Output Connections:** RCA, USB
- **Speed Settings:** 33, 45
- **Power Supply:** 100-240VAC 50/60Hz (12V Adapter)
- **Dimensions (L x W x H) :** 398 x 359 x 91mm
- **Weight (per unit):** 2,70 kg

The specifications are typical. The actual values can slightly change from one unit to the other. Specifications can be changed without prior notice.

The products referred to in this manual conform to the European Community Directives to which they are subject:


- Low Voltage (LVD) 2014/35/EU
- Electromagnetic Compatibility (EMC) 2014/30/EU
- Restriction of Hazardous Substances (RoHS) 2011/65/EU

Specifications and design are subject to change without prior notice.




[www.tronios.com](http://www.tronios.com)

Copyright © 2020 by Tronios The Netherlands

## Documents / Resources

 <p><b>audizio</b> RP310 Record Player HQ Black RP310 Record Player HQ Silver RP310 Record Player HQ Silver</p> <p>INSTRUCTION MANUAL GEBRUIKSAANWIJZING BEDIJNINGSAANWIJZING MANUAL DE INSTRUCCIONES MANUEL D'INSTRUCTIONS</p>	<p><a href="#">audizio RP310 Record Player HQ</a> [pdf] Instruction Manual RP310, 102.170, Record Player HQ</p>
--	---

## References

-  [Audacity download | SourceForge.net](#)
-  [Audacity, Inc](#)
-  [Stibat](#)
-  [Sound & Light distributor - Tronios.com](#)
-  [Inleveren is terugkrijgen - Wecycle](#)