



audison B-CON Bluetooth Hi-Res Receiver User Manual

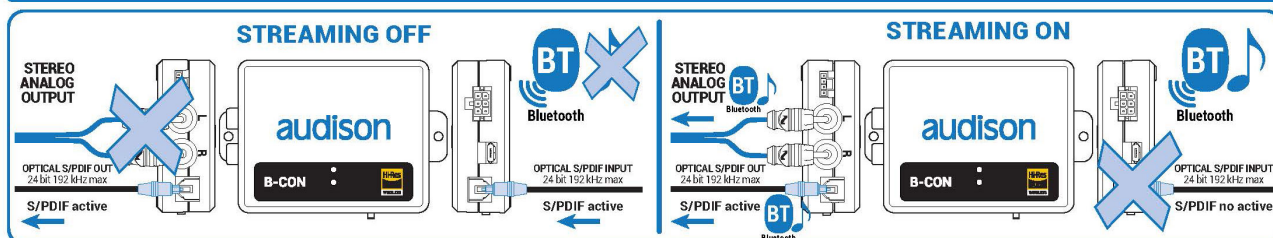
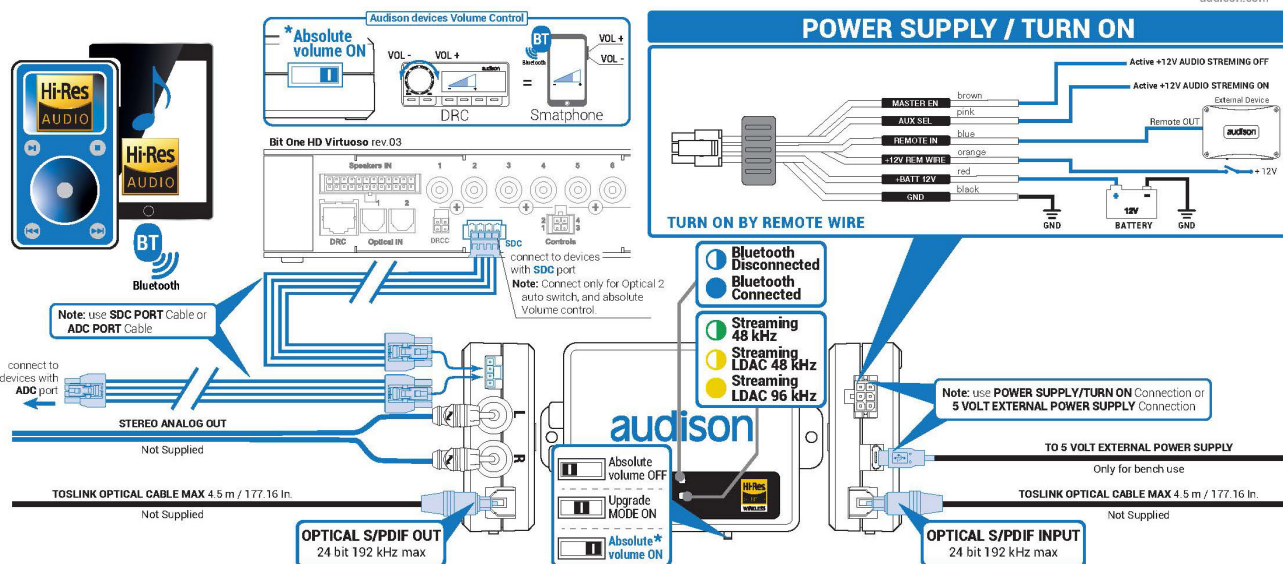
[Home](#) » [audison](#) » audison B-CON Bluetooth Hi-Res Receiver User Manual 

Contents

- [1 B-CON Bluetooth Hi-Res Receiver](#)
- [2 PRODUCT FEATURES](#)
- [3 Android](#)
- [4 FCC:](#)
- [5 Technical Specifications:](#)
- [6 Documents / Resources](#)
- [7 Related Posts](#)

B-CON Bluetooth Hi-Res Receiver

ACCESSORIES
USER'S MANUAL



POWER SUPPLY	
Voltage:	6 ~ 24 VDC
Idling current:	70 mA @ 12 V
Remote IN voltage:	3 + 12 VDC (0.5 mA)
+ 12 Remote IN voltage:	6 + 12 VDC (70 mA)
USB Micro:	5 V (500 mA)
BLUETOOTH	
Type:	Bluetooth 5.0 + EDR
Codec:	Ldac, AAC, SBC
Profile:	Bluetooth A2DP 1.3, AVRCP 1.6
INPUTS	
Optical digital:	S/PDIF Optical (Max 24 bit/102KHz)
INPUT / OUTPUT MANAGEMENT	
Digital IN delay switch:	1 sec.
SDC Connector:	Optical 2 Select and Absolute Volume Control
ADC:	Serial RS232 to control other audison devices that support this stand
Mode Switch:	Absolute volume ON/OFF, upgrade mode
OUTPUT	
Optical digital:	From Optical input: 24 bit 192 KHz From Streaming Bluetooth: 24 bit 96 KHz max.
Analogue:	Bandwidth (MAX) 20 + 48K Hz Output Level 2 VRMS Distortion - THD @1 KHz, 1 VRMS 0.0035 S/N RATIO (A weighted) 100 dB
SIZE	
W x H x D mm / in.	90 x 60,4 x 23 / 3,54 x 2,38 x 0,91
Weight kg / lbs:	0,054 / 0,119



Bluetooth Hi-Res Receiver rev. 1

audison.com

audison
ISTINTO
INNOVATIVO

PART OF ELETTROMEDIA
G2018 Potenza Picena (MC) Italy
T +39 0733 870 870 - F +39 0733 870 880
www.elettromedia.it

audison
ISTINTO
INNOVATIVO

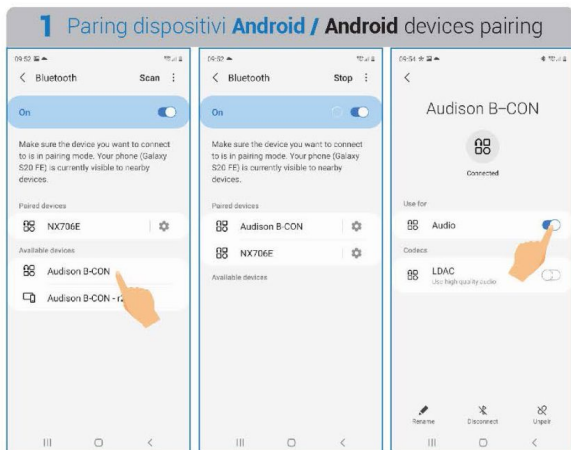
In the case of a voice call, the DSP automatically switches to the processor's Master input * (by associating the mobile device with the B-CON and the car). At the end of the call it reverts back to playing the song previously paused, managing the car speakerphone without limitations.

Audison B-CON has a “pass-through” digital optical input (max 192kHz / 24bit) which provides a second auxiliary input to the active DSP when there is no BT streaming.

The digital output (max 96kHz / 24bit) and the analog output (max 2 VRMS, S/N RATIO 100 dBA) allow the user to connect the B-CON to any audio device.

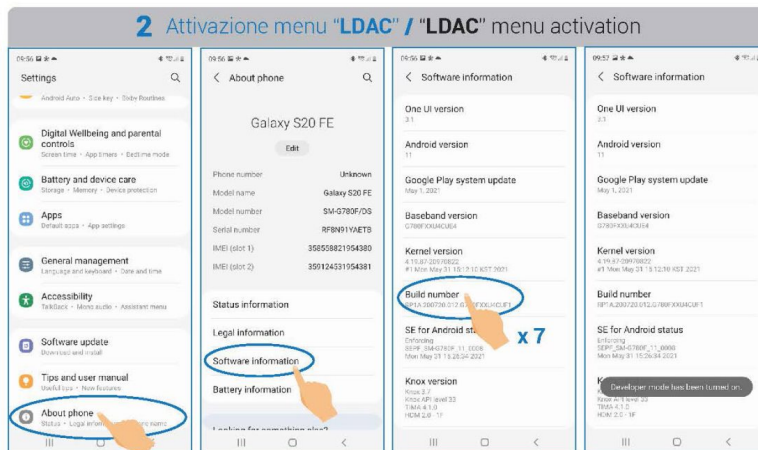
*available on the new Forza line or on the bit One HD Virtuoso by connecting the ADC port

Android



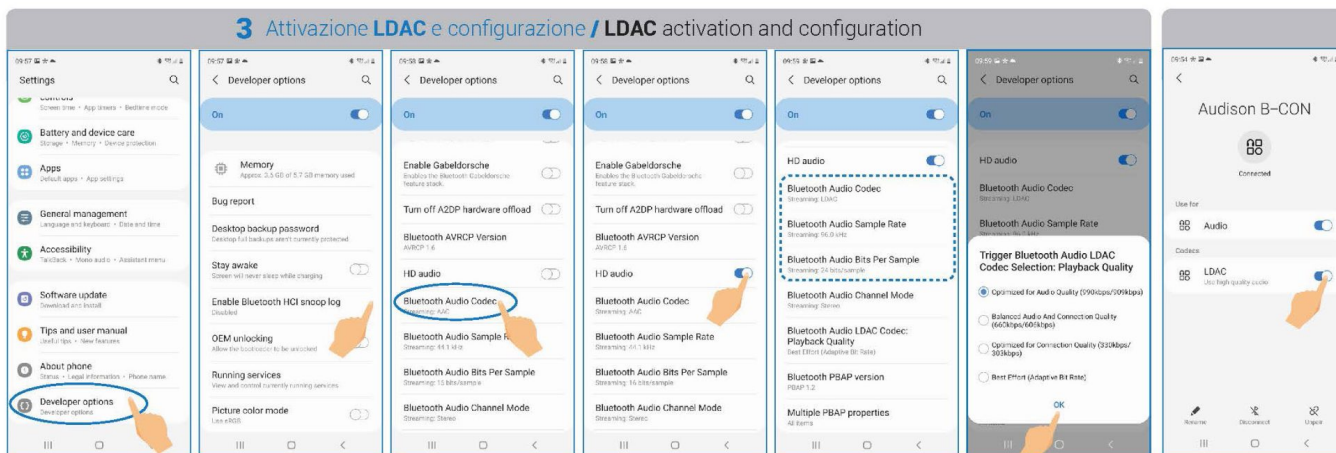
Attiva la modalità Bluetooth del tuo telefono, subito inizierà la ricerca di tutti i dispositivi BT. Seleziona **Audison B-CON**. Una volta accoppiato la scritta verrà evidenziata. **Cliccare sopra la scritta Audison B-CON evidenziata** x entrare nelle impostazioni del dispositivo, attivare la voce audio **Audio**.

Enable your phone's Bluetooth mode, it will immediately start searching for all BT devices. Select **Audison B-CON**. Once paired, the name will be highlighted. **Click on the Audison B-CON highlighted name** to enter the device settings, enable the **Audio** item.



Apri il menu principale e seleziona **"Impostazioni"**. Scorrere e selezionare **"Info sul telefono"** e seleziona **"Informazioni software"**. Scorri verso il basso e tocca sette volte in rapida successione **"Versione build"**. Il menu **"opzioni sviluppatore"** risulta attivato.

Open the main menu and select **"Settings"**. Scroll and select **"About phone"** and select **"Software information"**. Scroll down and tap **"Build version"** seven times in quick succession. The **"developer options"** menu is activated.



Entra nel menù "opzioni sviluppatore" e scorri fino al menù **"Codec Audio Bluetooth"**. Enter the "developer options" menu and scroll down to the menu **"Codec Audio Bluetooth"**.

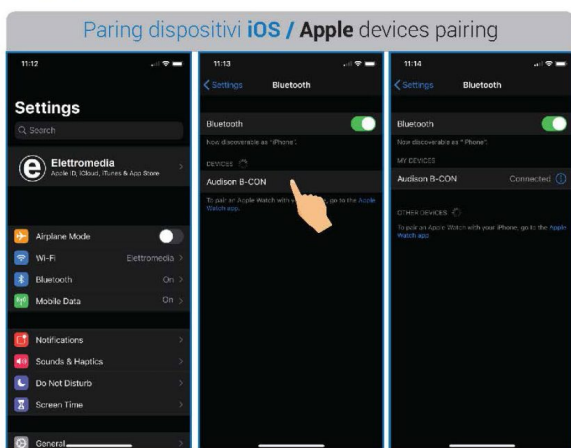
Selezionare il codec **LDAC**, e successivamente ottimizzare le opzioni audio come riportato. Il dispositivo Android è pronto per lo streaming Audio Hi-Res.

Select the **LDAC** codec, and then optimize the audio options as shown. The Android device is ready for Hi-Res Audio streaming.

Dal menu principale dei dispositivi Bluetooth è possibile attivare/disattivare la modalità LDAC.

From the main menu of the Bluetooth devices it is possible to enable/disable the LDAC mode

Apple



Sequiere le fasi sopra riportate per accoppiare il B-CON con il vostro dispositivo IOS. Follow the steps above to pair the B-CON with your IOS device

ABSOLUTE VOLUME SETUP

Per passare dalla modalità Absolute Volume On/Off e viceversa, seguire la procedura.

- 1) Rimuovere la connessione Bluetooth dal proprio dispositivo mobile, dissociando il dispositivo B-Con.
- 2) Scollegare il connettore di alimentazione, del B-Con.
- 3) Posizionare lo Switch nella posizione "Absolute Volume On o OFF", e ricollegare il connettore di alimentazione.
- 4) Eseguire un nuovo Pairing del B-Con con il proprio dispositivo mobile.

Each mode switch from "Absolute Volume On" to "Absolute Volume Off" and viceversa requires the following procedure:

- 1) Remove the Bluetooth connection from the mobile phone, thus unpairing the B-Con device
- 2) Remove the B-CON supply connection
- 3) Set the switch on "Absolute Volume On" or "Absolute Volume Off" mode Connect the B-CON supply
- 4) Execute a new pairing between B-CON and the mobile phone.

Important remark:

To ensure maximum dynamics of the music signal, it is recommended to disable the equalizer of the mobile device connected in Bluetooth.

Certificato di garanzia: Per maggiori informazioni visitare il sito Audison
Warranty certificate: For more information visit the Audison website.

Informazioni per lo smaltimento di apparecchiature elettroniche ed elettiche (per i paesi europei che dispongono di sistemi di raccolta separata)
I prodotti contrassegnati con il simbolo del riciclaggio per rifiuti sono destinati a essere smaltiti separatamente dai rifiuti domestici. Questi prodotti elettronici devono essere smaltiti presso una struttura adeguata in grado di trattare i prodotti elettronici e i loro componenti. Per conoscere dove e come smaltire tali prodotti e componenti, contattare l'agente pubblico competente. Il riciclaggio e lo smaltimento corretto contribuisce a tutelare l'ambiente e ad evitare effetti dannosi alla salute.

Information on electrical and electronic equipment waste (for those European countries which organize the separate collection of waste)
Products which are marked with a wheeled bin with an 'x' through it can not be disposed of together with ordinary domestic waste. These electrical and electronic products must be recycled in proper facilities, capable of managing the disposal of those products and components. In order to know where and how to deliver those products to the nearest recycling disposal site please contact your local municipal office. Recycling and disposing of waste in a proper way contributes to the protection of the environment and to prevent harmful effects on health.

FCC:

This device complies with Part 15 of the FCC Rules. Operation is subject to the following two conditions:

- (1) This device may not cause harmful interference.

(2) This device must accept any interference received, including interference that may cause undesired operation.

NOTE: This equipment has been tested and found to comply with the limits for a Class B digital device, pursuant to Part 15 of the FCC Rules. These limits are designed to provide reasonable protection against harmful interference in a residential installation. This equipment generates uses and can radiate radio frequency energy and, if not installed and used in accordance with the instructions, may cause harmful interference to radio communications. However, there is no guarantee that interference will not occur in a particular installation. If this equipment does cause harmful interference to radio or television reception, which can be determined by turning the equipment off and on, the user is encouraged to try to correct the interference by one or more of the following measures:

- Reorient or relocate the receiving antenna.
- Increase the separation between the equipment and receiver.
- Connect the equipment into an outlet on a circuit different from that to which the receiver is connected.
- Consult the dealer or an experienced radio/TV technician for help.

WARNING: Changes or modifications not expressly approved by the party responsible for compliance could void the user's authority to operate the equipment.

Radiation Exposure Statement:

This equipment complies with FCC radiation exposure limits set forth for an uncontrolled environment. This equipment should be installed and operated with minimum distance 20cm between the radiator & your body.

IC:

This device complies with Industry Canada licence-exempt RSS standard(s). Operation is subject to the following two conditions:

- (1) this device may not cause interference, and
- (2) this device must accept any interference, including interference that may cause undesired operation of the device.

RF Exposure

This device has been evaluated and shown compliant with the RF exposure requirements listed in RSS-102 – Radio Frequency (RF) Exposure Compliance of Radio communication Apparatus limits under fixed exposure conditions (antennas are greater than 20cm from a person's body) when installed in certain specific OEM configurations.

CE:

EU Regulatory Conformance

We, Elettromedia s.r.l., hereby declare that this device is in compliance with the essential requirements and other relevant provisions of Directive 2014/53/EU.

Technical Specifications:

- Operating temperature: 0 ÷ 55 °C
- Frequency range: 2402-2480MHz
- Max. RF Output Power: < 10dBm
- Hardware version: R01
- Software version: R1.0

RF Exposure:

This equipment complies with radiation exposure limits set forth for an uncontrolled environment.

Note: This product can be used in EU countries without any restrictions.

Manufacturer information:

Company name: ELETTROMEDIA Address: 62018 Potenza Picena (MC) Italy

Strada Regina km 3,500

Tel: T +39 0733 870 870

Web: www.elettromedia.it

Documents / Resources

	<p>audison B-CON Bluetooth Hi-Res Receiver [pdf] User Manual BCON, 2ASUD-BCON, 2ASUDBCON, B-CON Bluetooth Hi-Res Receiver</p>
---	---

[Manuals+.](#)