

audiolab
audiolab USB and
DSD



audiolab USB and DSD Setup Guide User Guide

[Home](#) » [audiolab](#) » audiolab USB and DSD Setup Guide User Guide 

audiolab

Contents

- 1 [audiolab USB and DSD Setup Guide](#)
- 2 [Product Specifications](#)
- 3 [Product Usage Instructions](#)
- 4 [System Requirements](#)
- 5 [Adjusting the sample rate](#)
- 6 [Install and set Foobar2000 in Windows OS to Run PCM and DSD Audio](#)
- 7 [Install and Set iTunes in Mac OS X to play PCM audio](#)
- 8 [Install and set Audirvana Plus in Mac OS X to play PCM or DSD audio.](#)
- 9 [Attention Before Service](#)
- 10 [FAQS](#)
- 11 [Documents / Resources](#)
 - 11.1 [References](#)
- 12 [Related Posts](#)

audiolab USB and DSD Setup Guide



Product Specifications

- Model: 64#@BOE@%4%@TFUVQ@HVJEF@@3@*QEG
- Color: N/A
- Material: N/A
- Dimensions: N/A
- Weight: N/A

Product Usage Instructions

Unboxing

Open the package and carefully remove the product.

Assembly

Follow the included assembly instructions to put together the product.

Power On

Connect the product to a power source and turn it on using the power button.

Operation

Refer to the user manual for specific instructions on how to operate the product.

Maintenance

Regularly clean and maintain the product as per the maintenance guidelines provided.

System Requirements

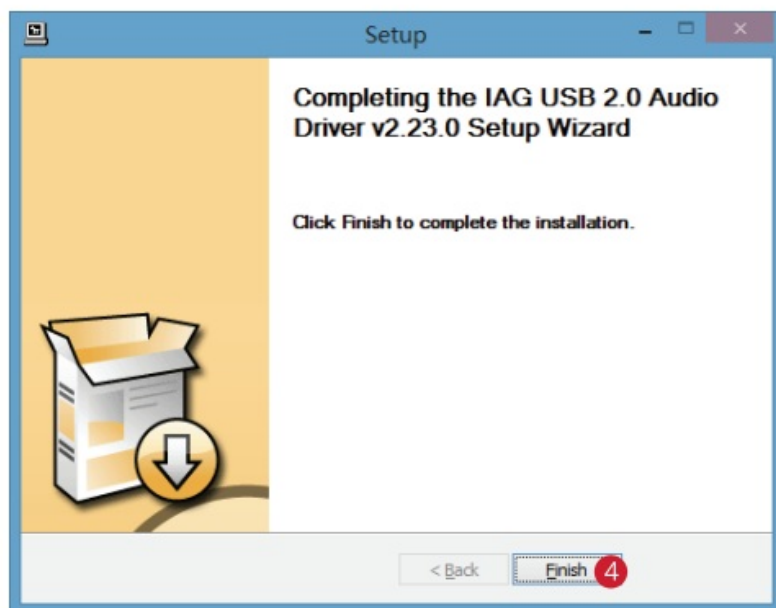
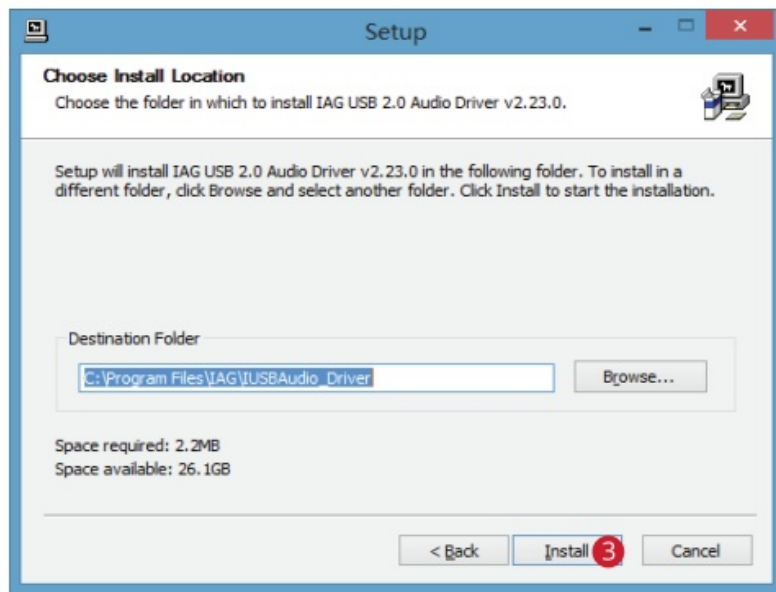
- Intel Core 2@ 1.6GHz or similar AMD processor

- 1GB RAM
- USB 2.0 Interface
- Microsoft Windows Vista 32/64 Bit incl. SP2 | Windows 7 32/64Bit | Windows XP SP3 (not recommended)
Apple Mac OS from 10.6.4

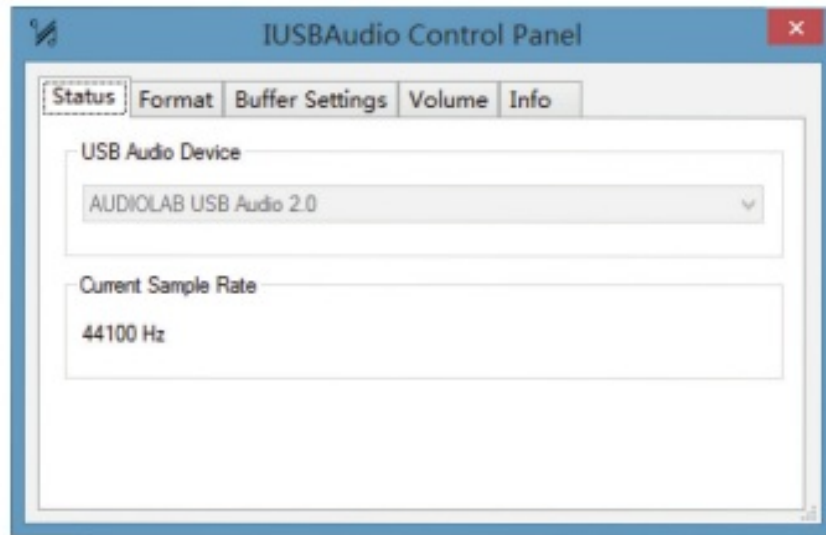
Windows B / Windows7 / Windows 10 / Vista/ XP Installation

- To use the USB input for the first time, the device requires the installation of the USB driver.
- Follow the instructions of the setup program to install the driver.
- Complete the installation by clicking 'Finish'.

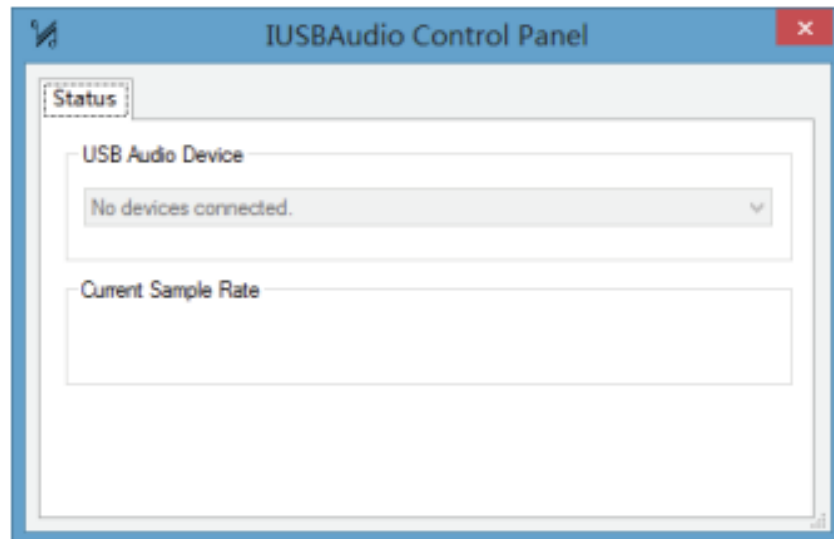




To confirm the connection of the Audiolab product to the PC, double-click on the  tab.



If this window appears then the connection has been established between the Audiolab product and the PC, and the device is now ready to use.



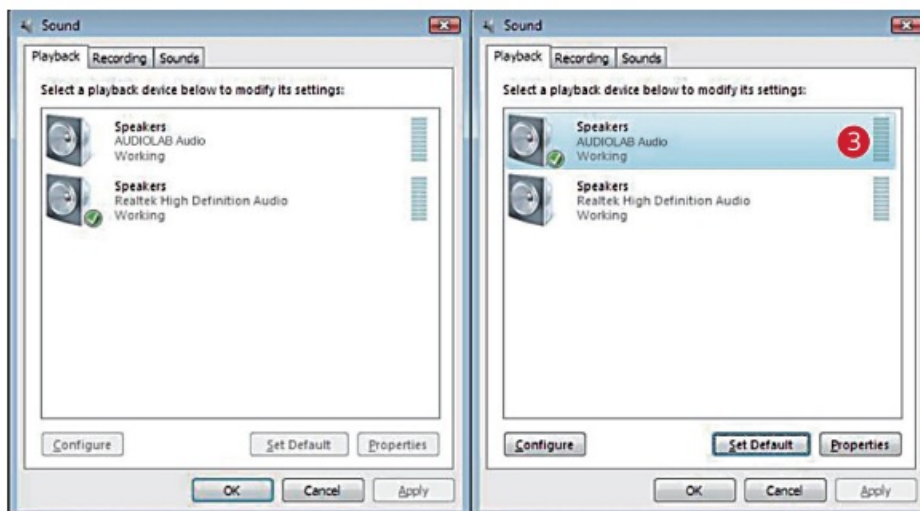
If this window appears then the connection has not been established, please reconnect the Audiolab product.

Windows 8 / Windows7 / Windows 10/ Vista/ XPSystem Setup

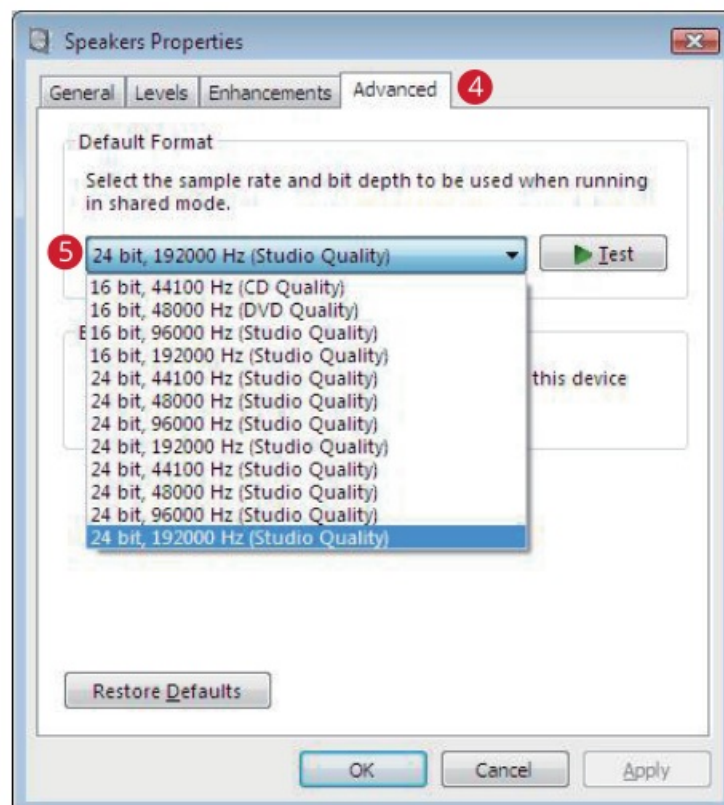
After the successful installation of the driver, please connect the Audiolab USB audio device to a free USB port. We recommend that you do not use a USB-hub, to ensure the best performance of your Audiolab device. When listening to music from your computer, we recommend that you close all other USB applications. When connected, installed, and selected accordingly, theAudiolabb USB Audio Driver replaces the internal sound card of your computer.

Adjusting the sample rate

1. Open the control panel of your computer.
2. Open Sound.
3. If the Audiolab USB Audio is not set to do to default, please set it to default as shown.



4. Under properties select Advanced and adjust the output format as required.

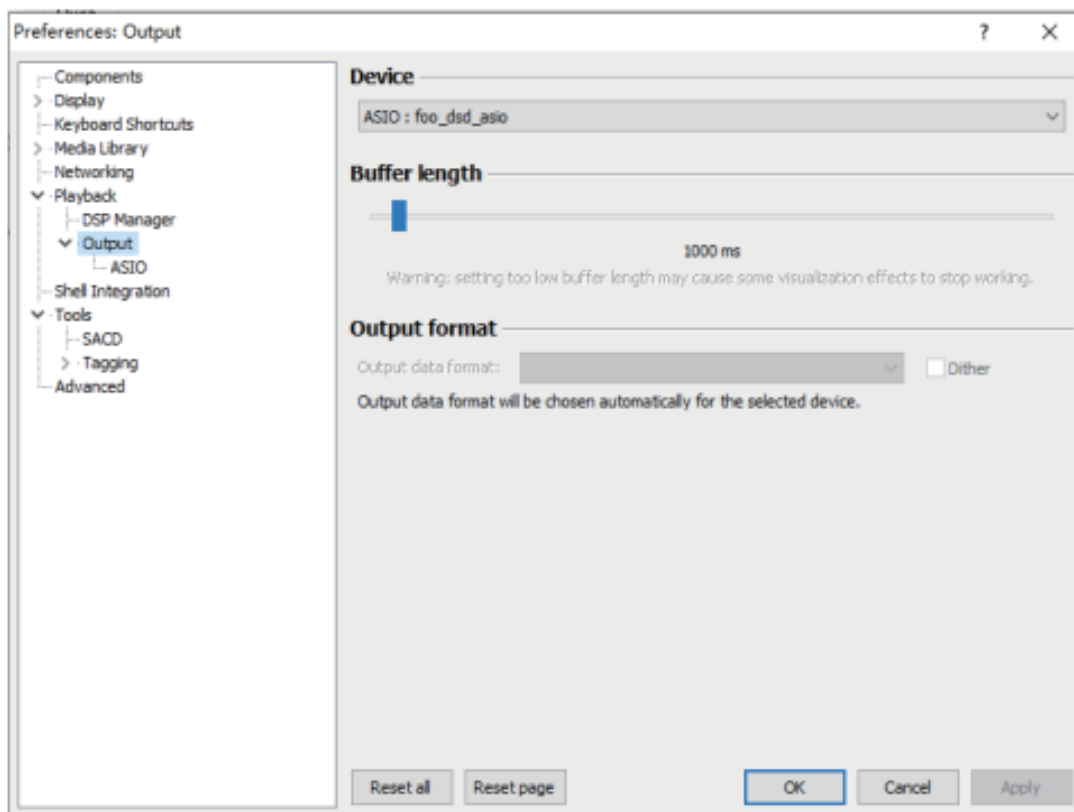


Note

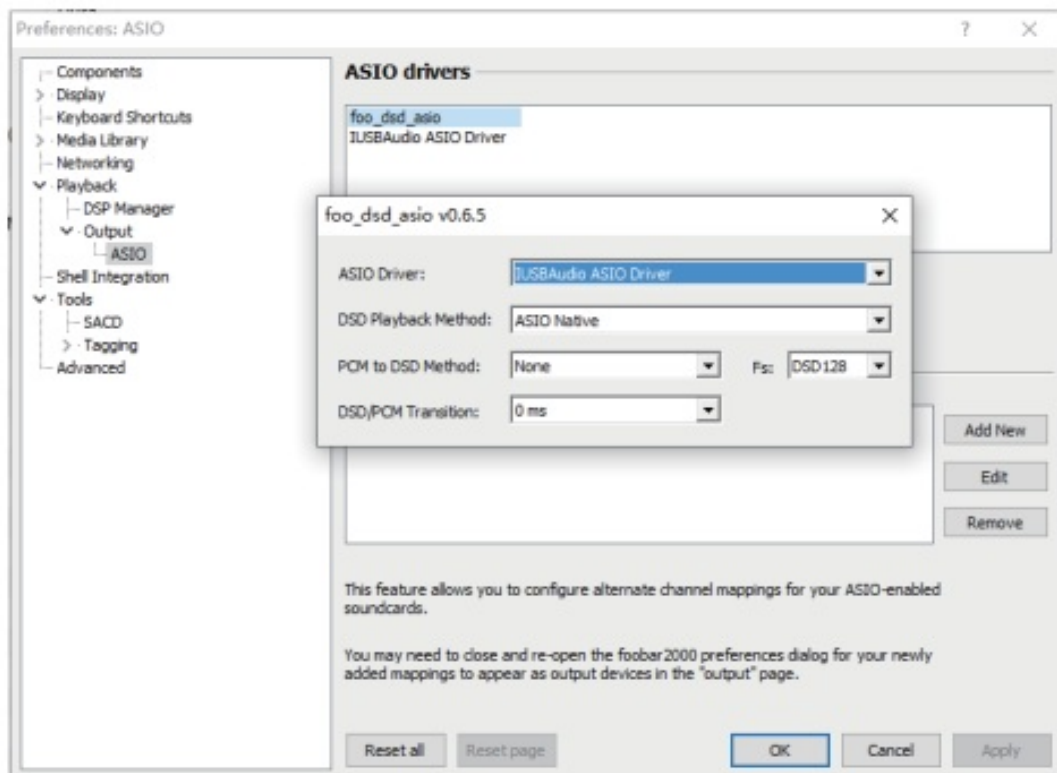
Windows Vista does not support the sample rate of 176.4kHz/24-bit. If you want to playback this sample rate, a music player supporting this feature is required. You can use J. River Media Center or Foobar for example. Windows XP does not support sample rates of more than 48 kHz. You need a special music player to play back other sample rates, for example, J. RiverMediaa Center or Foobar.

Install and set Foobar2000 in Windows OS to Run PCM and DSD Audio

1. Download Foobar2000 from the official website, and install Foobar2000 on Windows.
2. Download the SACD plugin from the official website.
 - Unzip SACD plugin,
 - Click the .exe file to install,
 - Foobar will pop up a window, please click “Apply” to restart Foobar.
3. Download the ASIO plugin from the official website.
 - Unzip ASIO plugin,
 - Click the .exe file to install,
 - Foobar will pop up a window, please click “Apply” to restart Foobar.
4. Configure the Output Device
 - Go to Playback->Output
 - Select the Device: ASIO foo_dsd_asio



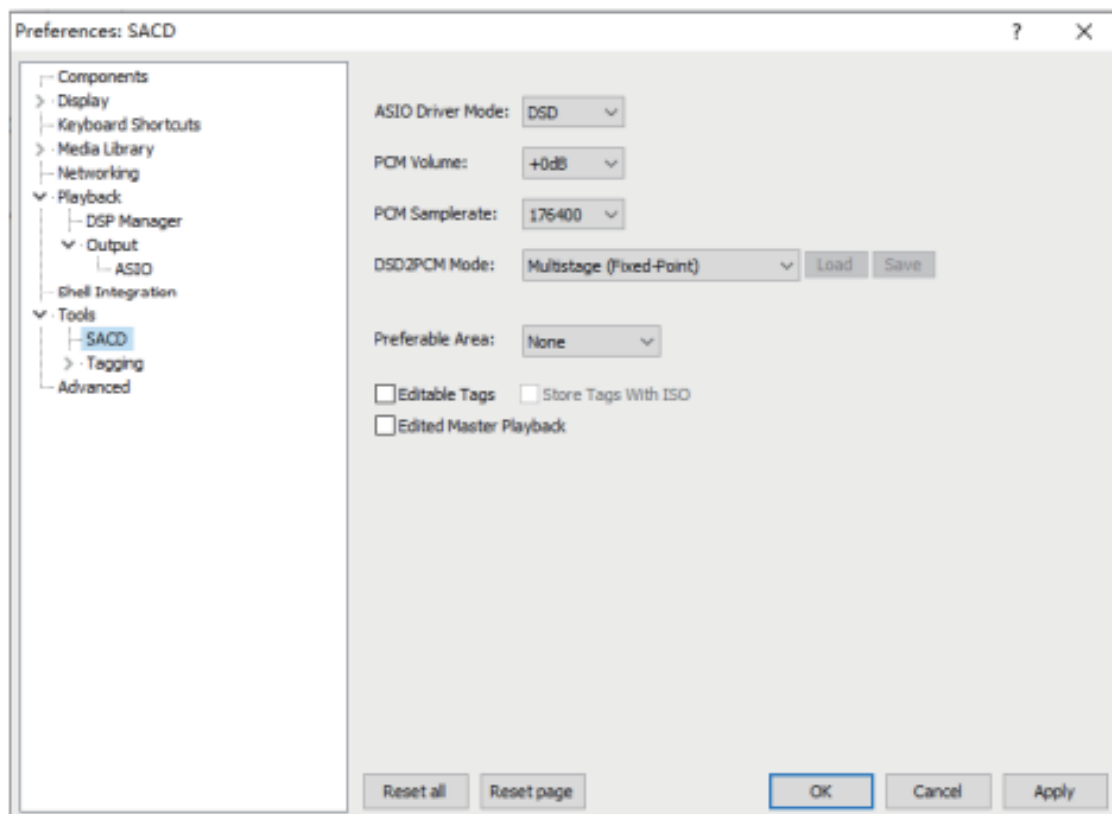
5. Configure the ASIO output
 - Goto Playback->Output->ASIO, double-click on foo_dsd_asio
 - Select the IUSBAudio ASIO Driver
 - Select the ASIO Native
 - Select PCM to DSD Method:N one
 - Select Fs: DSD128



6. Configure the SACD plugin to play DSD (and not convert from DSD to PCM)

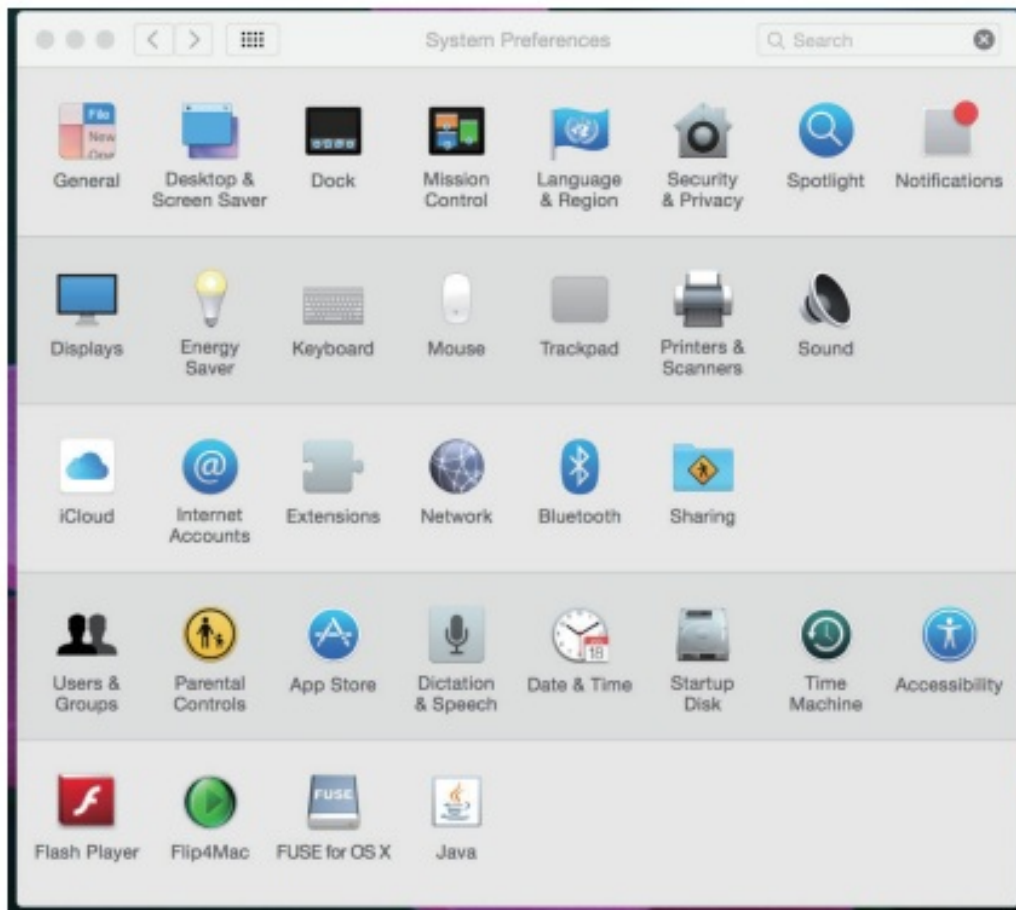
- GotoTools->SACD
- Set ASIO Driver Mode to DSD
- Set PCM Sample Rate to 176400

7. Load some PCM or DSD audio into Foobar2000 and

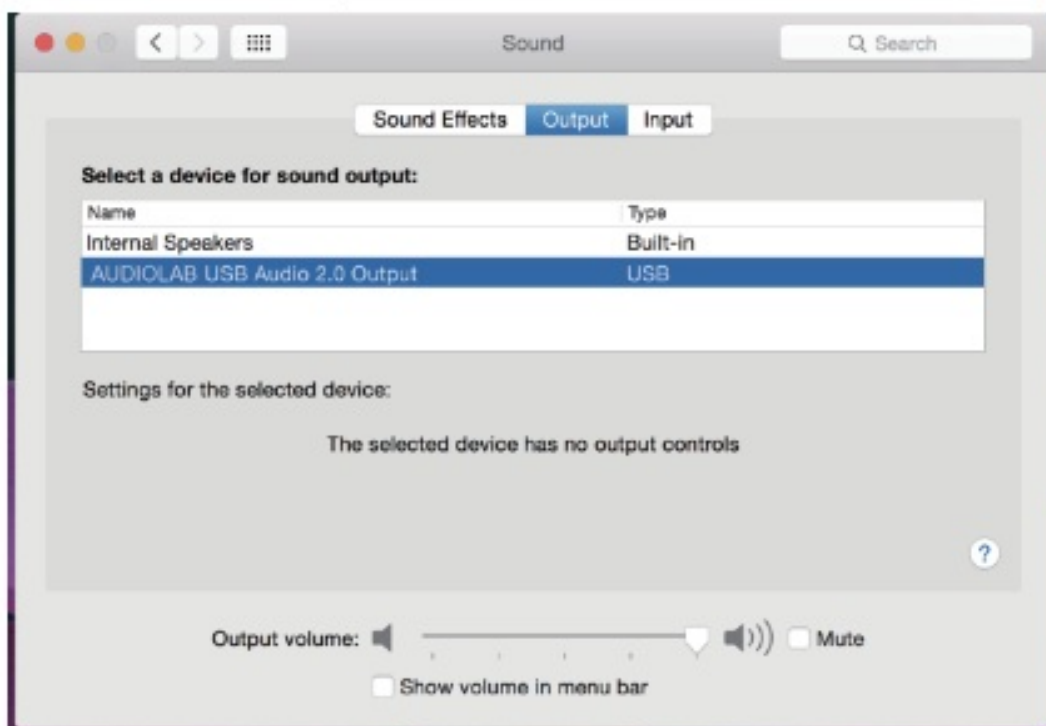


Install and Set iTunes in Mac OS X to play PCM audio

1. Click the “Sound” icon In “System Preferences



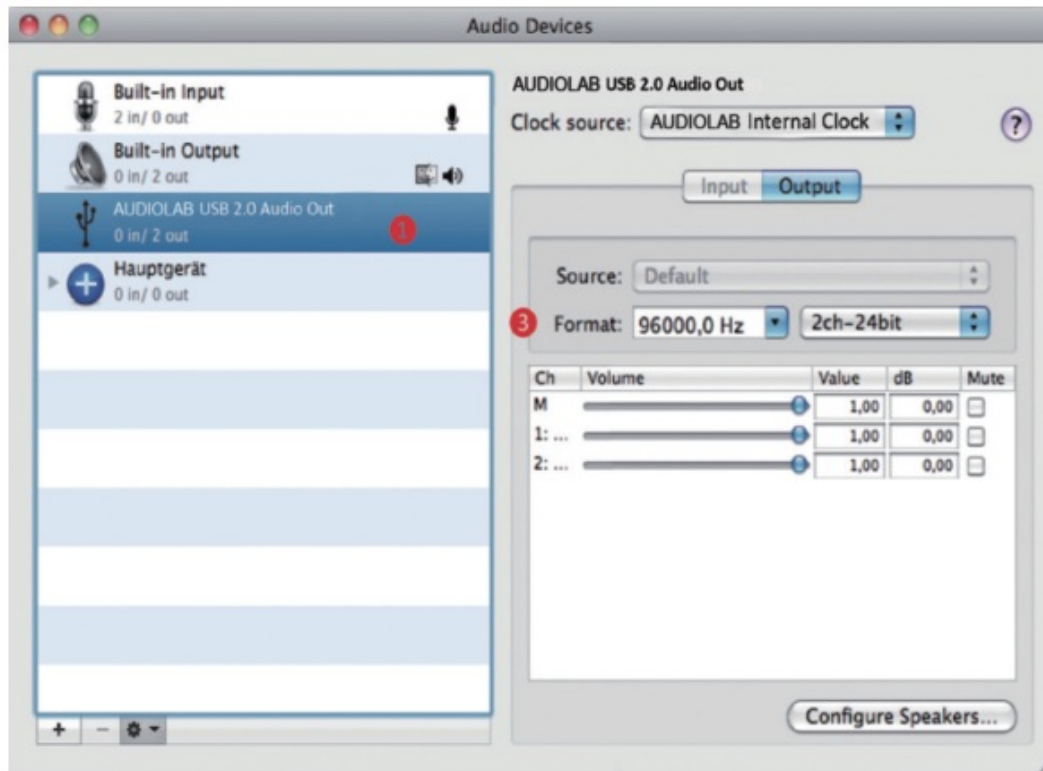
2. Click the “Output” tab in “Sound”, and select the “AUDIOLAB USB Audio 2.0 Output” as the device for sound output.



3. Click “Audio MIDI Setup” in the Utilities Screen to open “Audio Devices”.
- Click “AUDIOLAB USB Audio 2.0 Output” in the main menu.
 - In the pop-up menu, select “Use this device for sound output”. Music from iTunes will be directed to the Audiolab products, but the alert sounds will be sent to your secondary speakers.
 - Set the format to “44100.0Hz-24bit”, the default sampling rate should be selected as 44100.0Hz-24bit, if

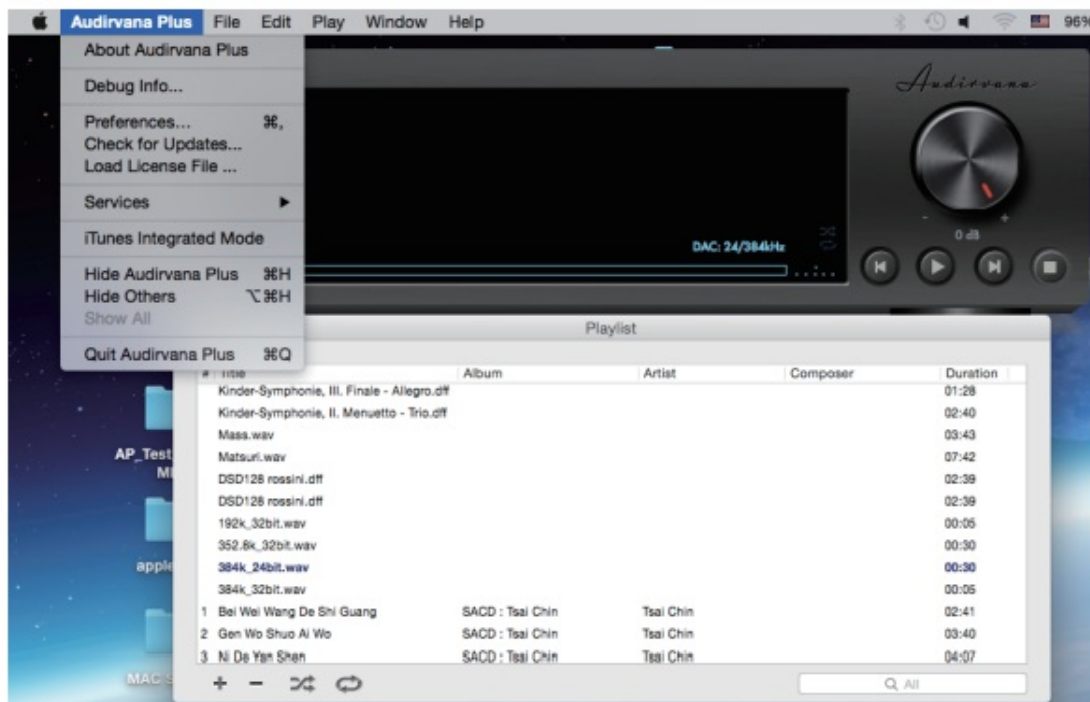
you are playing music at other sampling frequencies, you should set the sampling rate to match that rate.

- Load some PCM audio into iTunes and play.

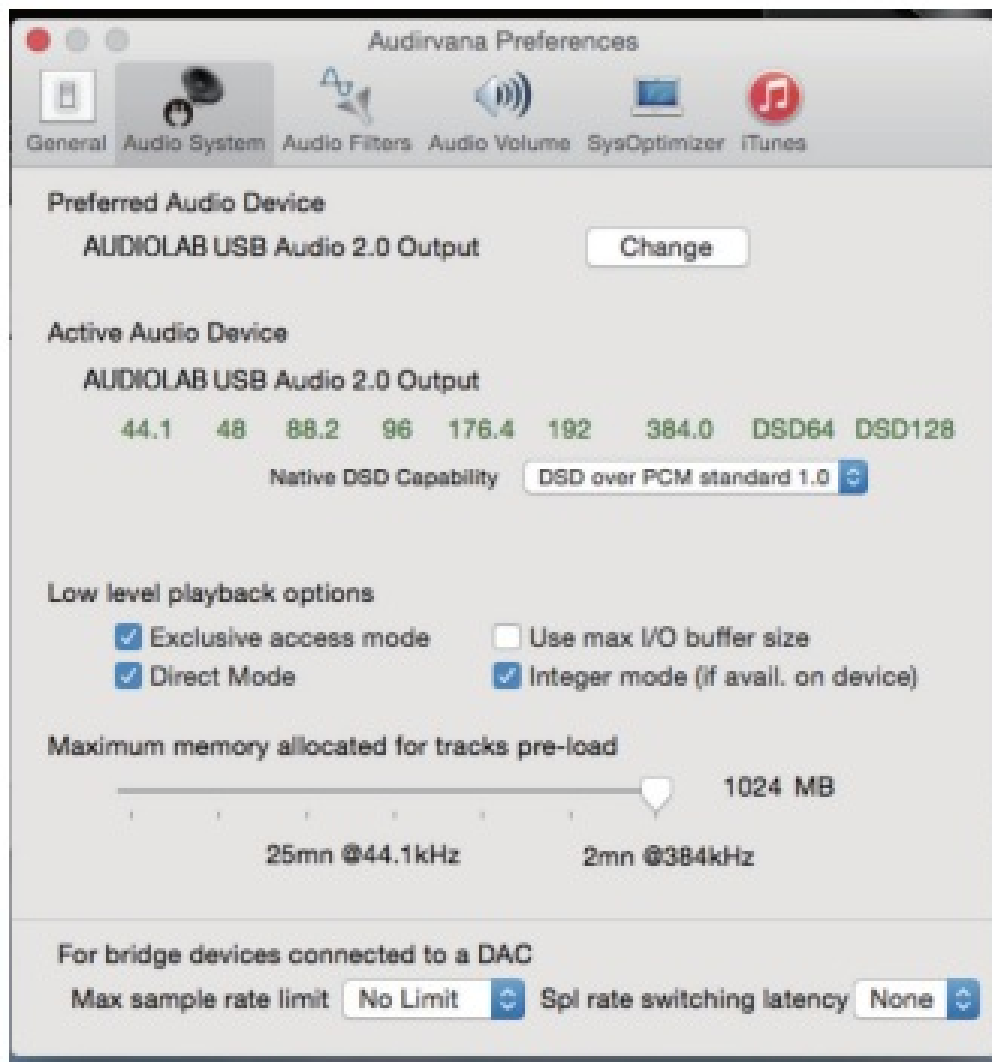


Install and set Audirvana Plus in Mac OS X to play PCM or DSD audio.

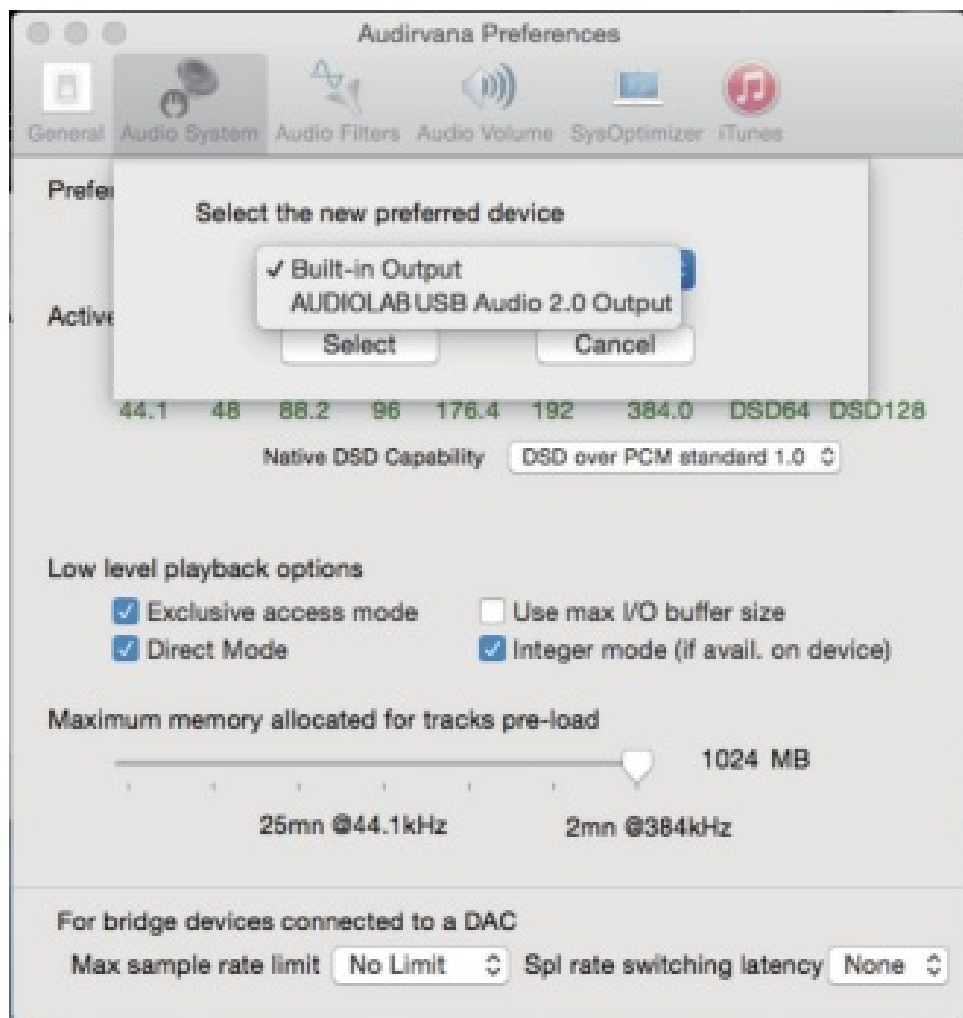
1. Open Audirvana Plus, Click “Preferences ” fromthe “Audirvana Plus” drop-down menu.



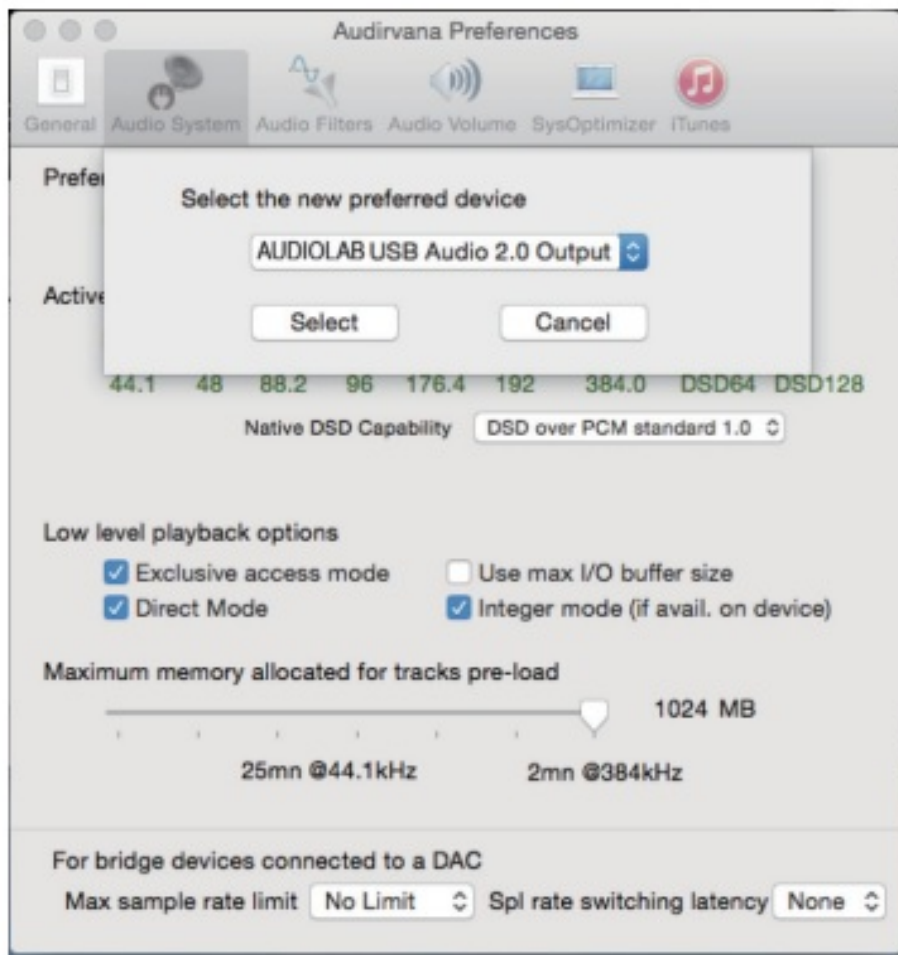
2. Open the “Audirvana Preferences” dialog box, and click “Change” in the “Audirvana Preferences” dialog box.



3. Select the “AUDIOLAB USB Audio 2.0 Output” icon as the device for sound output.



4. Load PCM or DSD audio into Audirvana Plus and play.



Attention Before Service

If the above operations fail to work, please try the following steps:

1. Please connect the power cable before plugging the USB cable into your PC.
2. Please unplug and reconnect the power cable or USB cable when the PC does not recognize the device / when it works abnormally.
3. Please disconnect the power cable and USB cable when unused for a long time.

Should the above symptoms persist with all instructions observed, your product may require servicing.

www.audiolab.co.uk

TAG House, 13/14 Glebe Road, Huntingdon,
Cambridgeshire, PE29 7DL, UK

FAQS

Q: What should I do if the product doesn't turn on?




Check the power source and ensure it is properly connected. If the issue persists, contact customer support.

Q: How often should I clean the product?

It is recommended to clean the product at least once a week to maintain optimal performance.

Q: Can I use the product outdoors?

This product is designed for indoor use only. Using it outdoors may damage the product.

-  www.audiolab.co.uk
-  audiolabiag
-  audiolabhifi
- TAG House, 13/14 Glebe Road, Huntingdon, Cambridgeshire, PE29 7DL, UK

Documents / Resources

	audiolab USB and DSD Setup Guide [pdf] User Guide USB and DSD Setup Guide, DSD Setup Guide, Setup Guide, Guide
---	---

References

- [User Manual](#)

Manuals+, Privacy Policy

This website is an independent publication and is neither affiliated with nor endorsed by any of the trademark owners. The "Bluetooth®" word mark and logos are registered trademarks owned by Bluetooth SIG, Inc. The "Wi-Fi®" word mark and logos are registered trademarks owned by the Wi-Fi Alliance. Any use of these marks on this website does not imply any affiliation with or endorsement.