



# audiolab 9000N Getting Started Instructions

[Home](#) » [audiolab](#) » audiolab 9000N Getting Started Instructions 

Contents

1 audiolab 9000N Getting Started

2 USING INSTRUCTION

3 Documents / Resources

3.1 References

4 Related Posts

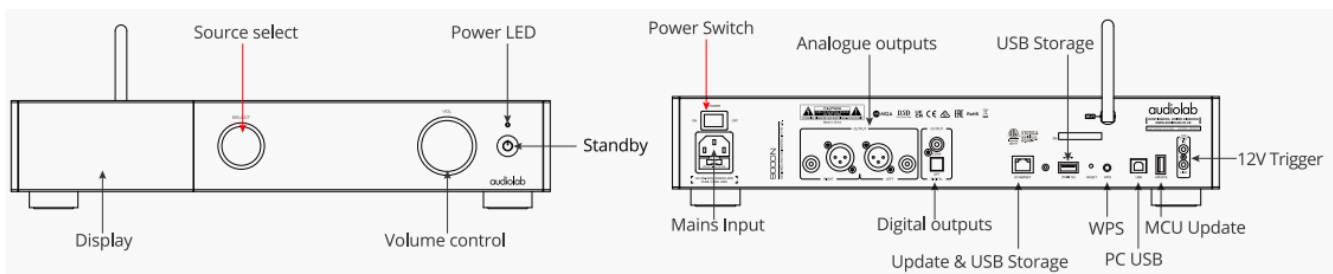


## audiolab 9000N Getting Started



### USING INSTRUCTION

1. Plug in the mains lead and switch on the mains power. Press the Standby button. Ensure that the 9000N source is set to “Streaming”.



2. Please download and install the Audiolab 9000N app from the Apple App Store or Google Play Store by scanning the QR code.



### 3. Network Connection

- **Wired Network Setup:**

- If you're using a wired network, simply connect the 9000N to a router with an Ethernet cable directly.

- **Wi-Fi Setup:**

- Follow one of the below two steps for setting up a Wi-Fi connection.

- **WPS Mode:** Short press the WPS button on the 9000N rear panel and then press the WPS button on your router. Wait for a few seconds. The network connection will auto-configure.

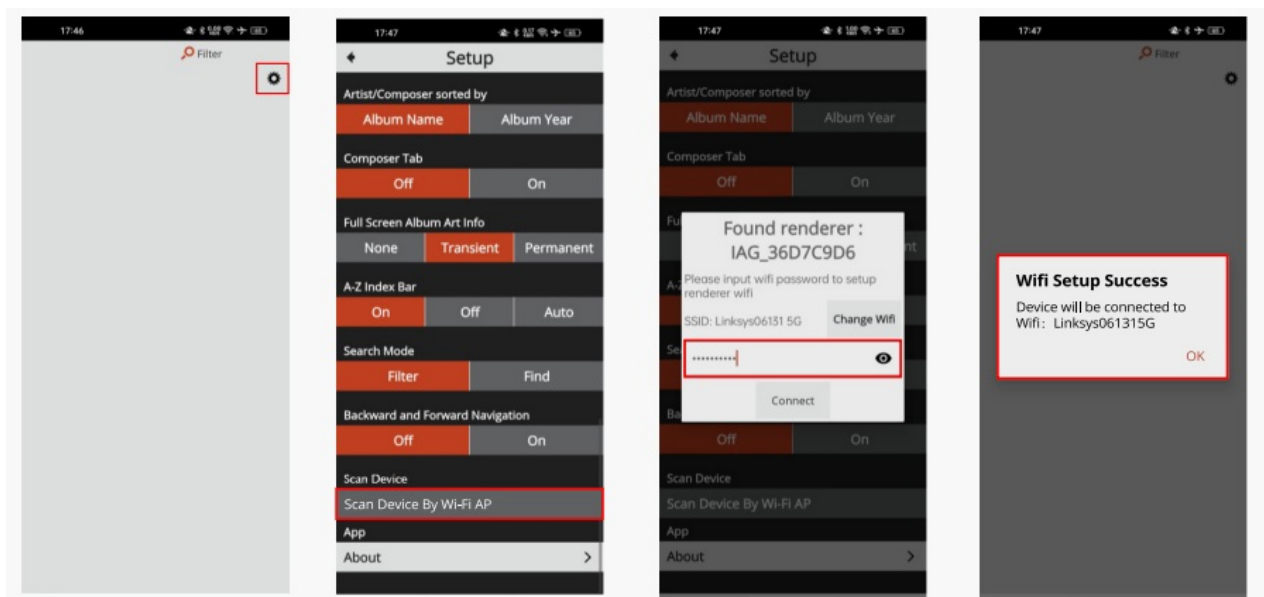
- A successful connection will be indicated by a red Wi-Fi icon on the 9000N display.

- If this does not work, repeat the process, but press the WPS button on your router first. Those familiar with their router's admin page can also add a WPS client there.

- **AP Mode:** Long press the WPS button on the 9000N rear panel for 6s. After a few seconds, the 9000N will display "Entering AP Mode". After a few more seconds, the display will change to "AP Mode".

- In the Audiolab 9000N app settings, go to "Wi-Fi Setup" (second option from the bottom). The app will find your 9000N and prompt you to enter the password for your Wi-Fi connection. Type in your Wi-Fi password and then press "Connect". A successful connection will be indicated by a red Wi-Fi icon on the 9000N display.

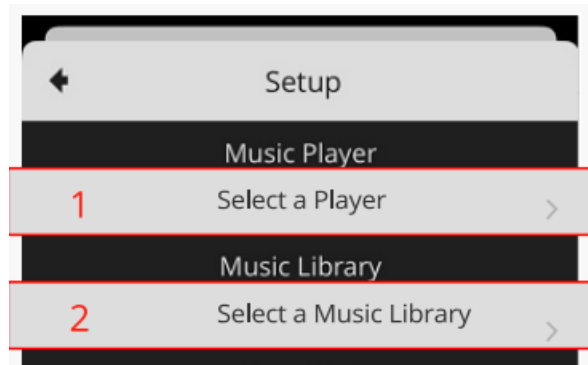
- If the 9000N Wi-Fi logo turns red, but the app still shows "connecting", please check that your smart device has not connected to a different Wi-Fi Spot to the 9000N.



4. Once a network connection is established, you can select the 9000N as your Music Player in the Audiolab 9000N app – see "Setup 1".

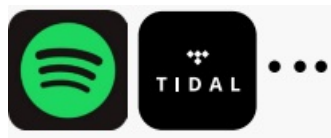
- If you have connected a USB storage device or have connected a NAS drive to your router, you can

select the appropriate music library in “Setup 2”. (USB storage will be named with whatever name you decide to choose for your 9000N. A NAS drive name can be read directly)

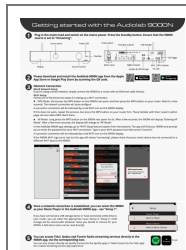


5. You can access Tidal, Qobuz, and TuneIn Radio streaming services directly in the 9000N app, via the corresponding icon.

- You can also stream directly via Spotify Connect (in the Spotify app) or Tidal Connect (in the Tidal app) for a native streaming service app experience.



## Documents / Resources



[audiolab 9000N Getting Started](#) [pdf] Instructions  
9000N Getting Started, 9000N, Getting Started, Started

## References

- [User Manual](#)

[Manuals+](#), [Privacy Policy](#)

This website is an independent publication and is neither affiliated with nor endorsed by any of the trademark owners. The "Bluetooth®" word mark and logos are registered trademarks owned by Bluetooth SIG, Inc. The "Wi-Fi®" word mark and logos are registered trademarks owned by the Wi-Fi Alliance. Any use of these marks on this website does not imply any affiliation with or endorsement.