



audioengine S8 Wireless Subwoofer User Guide

[Home](#) » [audioengine](#) » audioengine S8 Wireless Subwoofer User Guide

Contents [[hide](#)]

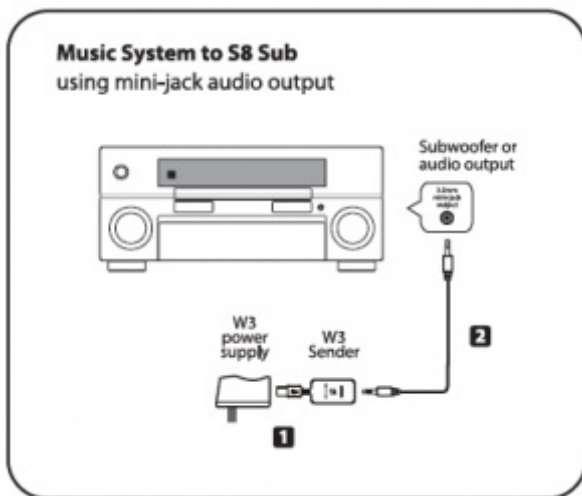
- [1 audioengine S8 Wireless Subwoofer User Guide](#)
- [2 S8 Wireless Subwoofer Setup](#)
- [3 Need Help?](#)
- [4 S8 Subwoofer Setup](#)
- [5 Read More About This Manual & Download PDF:](#)
- [6 Documents / Resources](#)
- [7 Related Posts](#)

audioengine S8 Wireless Subwoofer User Guide

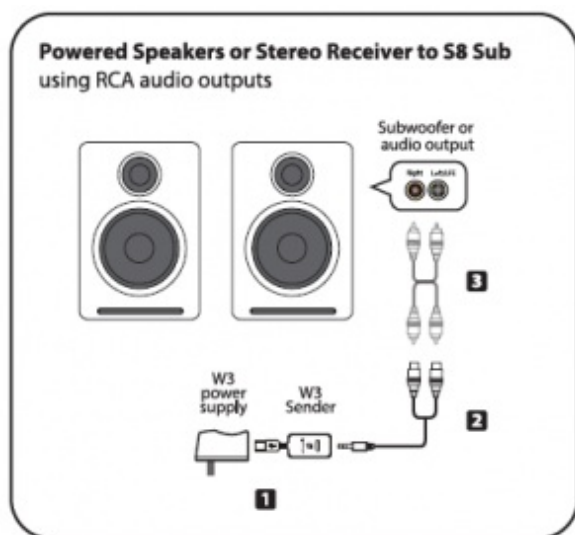


S8 Wireless Subwoofer Setup

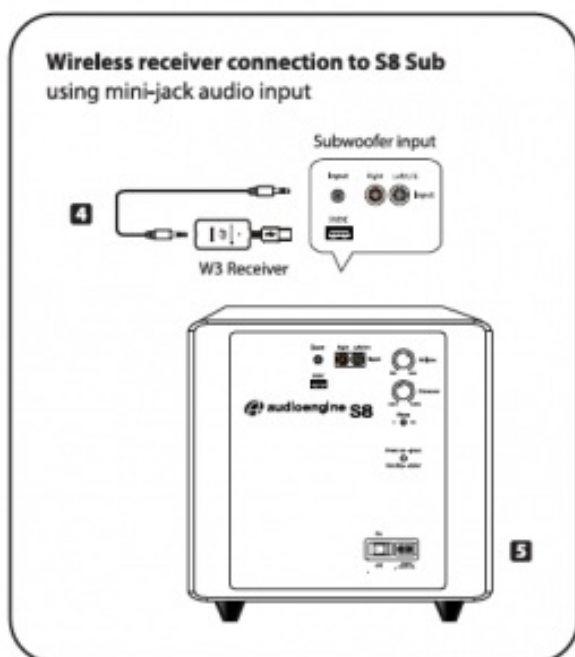
The W3 Wireless Audio Adapter, which is part of the S8 Wireless Subwoofer system, will allow you to send music wirelessly from any music system with an audio output to the S8 Subwoofer. Here are the two most common setups to make your S8 subwoofer wireless using the Audioengine W3 wireless adapter kit.



1. Connect the W3 power supply to the W3 Sender and plug the W3 power supply into a functioning AC power outlet.
2. Connect a mini-jack audio cable from the W3 Wireless Sender to your music system audio out or subwoofer output.



1. Connect the W3 power supply to the W3 Sender and plug the W3 power supply into a functioning AC power outlet.
2. If your powered speakers or AV receiver has RCA-style audio outputs or sub outputs, connect the included RCA adapter “Y” cable to the W3 Sender.
3. Connect an RCA cable (included with your powered speakers or AV receiver) between the RCA “Y” adapter cable and your music source subwoofer out.



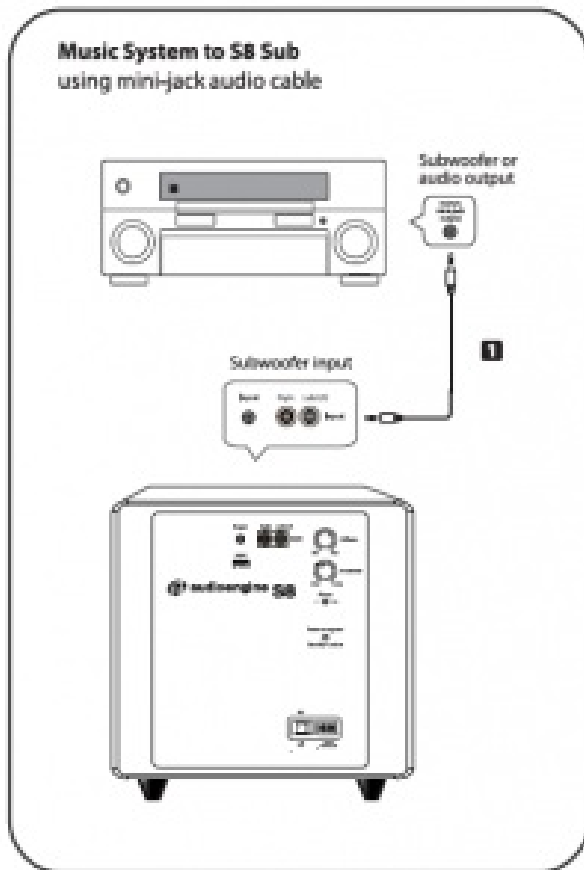
4. Connect the included mini-jack cable from the W3 Receiver to audio input on the rear panel of the 58 subwoofer.
5. Power on the 58 subwoofer. The status indicators on the W3 Sender and Receiver will both blink briefly and will then go solid, indicating they are paired and ready to play your music. For instructions on setting up the 58 Subwoofer, refer to the 58 Quick start Guide.

Need Help?

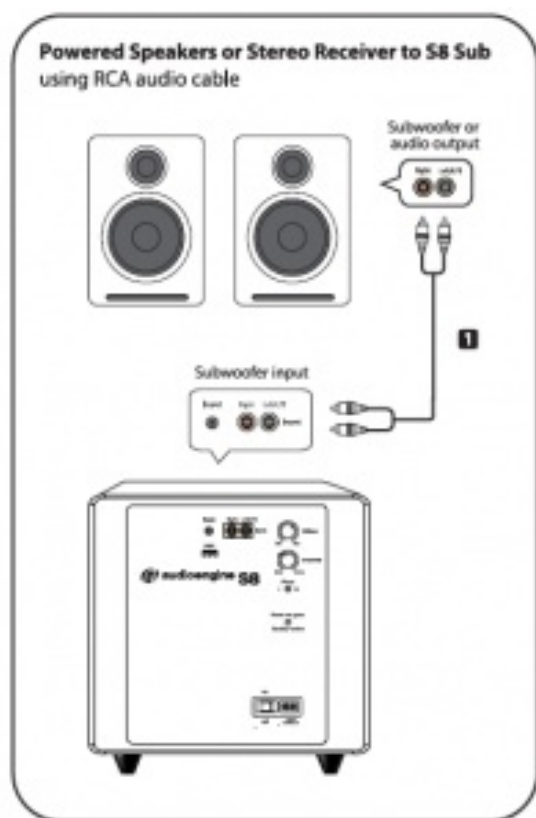
Visit: audioengine.com/support
Email us: support@audioengineusa.com
Call us: 855-845-5525

S8 Subwoofer Setup

Here are two of the most common connection options to connect the S8 subwoofer to your music system, stereo receiver, or powered speakers.



1. Connect a 3.5mm mini-jack audio cable from an output of your stereo receiver, powered speakers, or any music system with an output, to the S8 subwoofer input.



1. Connect an RCA stereo cable from an output of your stereo receiver, powered speakers, or any music system with an output, to the S8 subwoofer input.

If your stereo receiver or music system has a single RCA sub out or LFE output, connect an RCA cable from this output to the S8 sub RCA left (L) input.

Read More About This Manual & Download PDF:

Documents / Resources

	<p>audioengine S8 Wireless Subwoofer [pdf] User Guide S8 Wireless Subwoofer</p>
--	---