



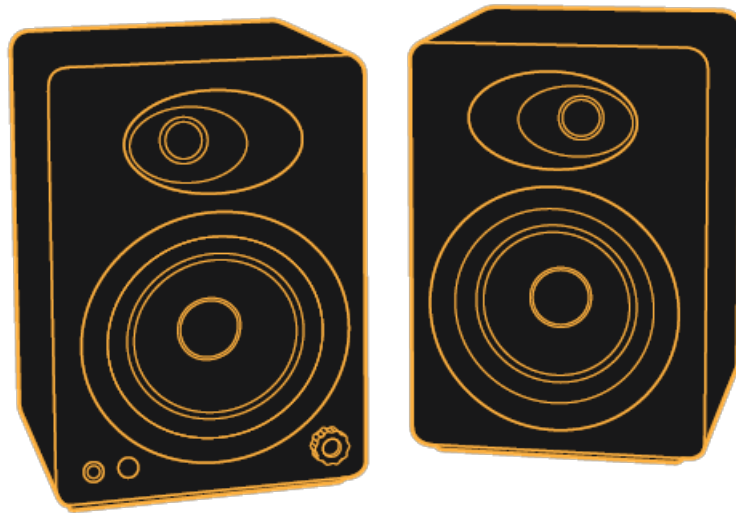
Audioengine A5+ Speaker System Manual

[Home](#) » [audioengine](#) » Audioengine A5+ Speaker System Manual 

Contents

- 1 Audioengine A5+
- 2 Premium Powered Book shelf Speakers
- 3 Basic Safety Instructions
- 4 Introduction
- 5 Features
- 6 Works With
- 7 What's in the Box
- 8 Unpacking
- 9 A5+ Front Left (Active/Powered)
- 10 A5+ Front Right (Passive)
- 11 A5+ Back Left
- 12 A5+ Back Right
- 13 Setup and Operation
 - 13.1 Step 1 – Speaker Placement
 - 13.2 Step 2 – Connecting the Speaker Wire
 - 13.3 Step 3 – Connecting the Power Cord
 - 13.4 Step 4 – Connecting Audio Cables
 - 13.5 Step 5 – Operation
 - 13.6 Break-in Period
 - 13.7 Cleaning
- 14 Other Features
 - 14.1 Variable Output
 - 14.2 USB Power
 - 14.3 Stand Mounting
- 15 Troubleshooting
 - 15.1 Front panel power indicator is not illuminated
 - 15.2 Front panel indicator light is on solid, but no sound
 - 15.3 Sound through one speaker only
 - 15.4 Lack of bass or poor imaging
 - 15.5 If sound is distorted
 - 15.6 Remote is not working or remote range is reduced
 - 15.7 Hum
 - 15.8 General Specifications
 - 15.9 Contact Us
 - 15.10 About Audioengine
- 16 Warranty
 - 16.1 Period
 - 16.2 What is covered
 - 16.3 What is not covered
 - 16.4 What we will do
 - 16.5 What we ask from you
 - 16.6 How to obtain Audioengine Warranty service
 - 16.7 Exclusive Remedy
 - 16.8 Product Returns and Refunds
- 17 A5+ Classic Quick Setup
 - 17.1 Step 1 – Speaker Placement
 - 17.2 Step 2 – Connecting the Speaker Wire
 - 17.3 Step 3 – Connecting the Power Cord
 - 17.4 Step 4 – Connecting Audio Cables
 - 17.5 Step 5 – Operation
 - 17.6 A5+ CLASSIC SETUP VIDEO
- 18 A5+ Classic Troubleshooting Tips
 - 18.1 A5+ troubleshooting tips – remote control
 - 18.2 Downloads
 - 18.3 Related Posts

Audioengine A5+



Premium Powered Book shelf Speakers

Audioengine, Ltd. +
support@audioengineusa.com
www.audioengineusa.com

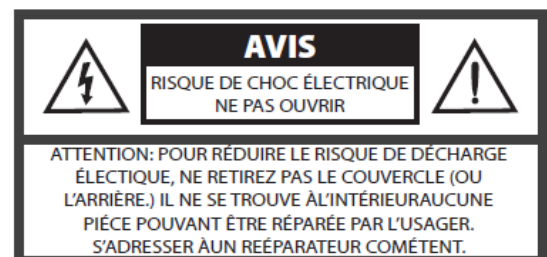
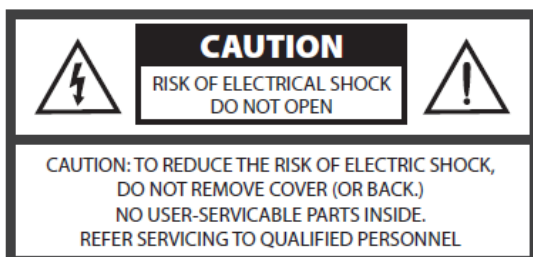
Basic Safety Instructions

- Read these instructions for all components before using this product.
- Keep these instructions for future reference.
- Heed all warnings on the product and in the owner's guide.
- Follow all instructions.
- Do not use this apparatus near water or moisture. Do not use this product near a bathtub, washbowl, kitchen sink, laundry tub, in a wet basement, near a swimming pool, or anywhere else that water or moisture are present.
- Clean only with a dry cloth and as directed by the manufacturer. Unplug this product from the wall outlet before cleaning.
- Do not block any ventilation openings. Install in accordance with the manufacturer's instructions. To ensure reliable operation of the product and to protect it from overheating, put the product in a position and location that will not interfere with its proper ventilation. For example, do not place the product on a bed, sofa, or similar surface that may block the ventilation openings. Do not put it in a built-in system, such as a bookcase or a cabinet that may keep air
- Do not install near any heat sources, such as radiators, heat registers, stoves or other apparatus that produce heat.
- Do not defeat the safety purpose of the polarized or grounding-type plug. A polarized plug has two blades with one wider than the other. A grounding-type plug has two blades and a third grounding prong. The wider blade or third prong are provided for your safety. If the provided plug does the obsolete outlet.
- Protect the power cord from being walked on or pinched, particularly at plugs, convenience receptacles, and the point where they exit from the apparatus.

- Only use attachment or accessories specified by the manufacturer.
- Use only with the cart, stand, tripod, bracket or table. When a cart is used, use caution when moving the cart/apparatus combination to avoid injury from tip-over.
- Unplug this apparatus during lightning storms or when unused for long periods of time to prevent damage to this product.
- Refer all servicing to qualified service personnel.
- Servicing is required when the apparatus has been damaged in any way such as power supply cord or plug is damaged, liquid has been spilled or objects have fallen into the apparatus, the apparatus has been exposed to rain or moisture, does not operate normally, or has been dropped. Do not attempt to service this product yourself. Opening or removing covers may expose you to dangerous voltages or other hazards. Please contact the manufacturer to be referred to an authorized service center near you.
- • To prevent fire or electric shock, avoid wall outlets, extension cords, or integral convenience receptacles.
- Do not let objects or liquids enter the product as they may touch dangerous voltage points or short out parts that could
- See product enclosure bottom for safety related markings.
- Use Proper Power Sources. Plug the product into a proper power source, as described in the operating instructions or as marked on the product.
- Avoid power lines— Use extreme care when installing an outside antenna system to keep from touching power lines or circuits, as contact with them may be fatal. Do not install external antennas near overhead power lines or other electric light or power circuits, nor where an antenna can fall into such circuits or power lines.

This device complies with part 15 of the FCC Rules.

Operation is subject to the following two conditions: This device may not cause harmful interference and this device must accept any interference received, including interference that may cause undesired operation.



Introduction

Welcome to the Audioengine family and congratulations on your purchase of the Audioengine 5+ Premium Powered Speakers!

The Audioengine team is dedicated to bringing you the highest-quality listening experience possible and the Audioengine 5+ (A5+) speakers were designed with the same attention to detail and operational simplicity as all other Audioengine products. As with our other past efforts we thank our customers, distributors and resellers for the inspiration to create another great Audioengine product.

Features

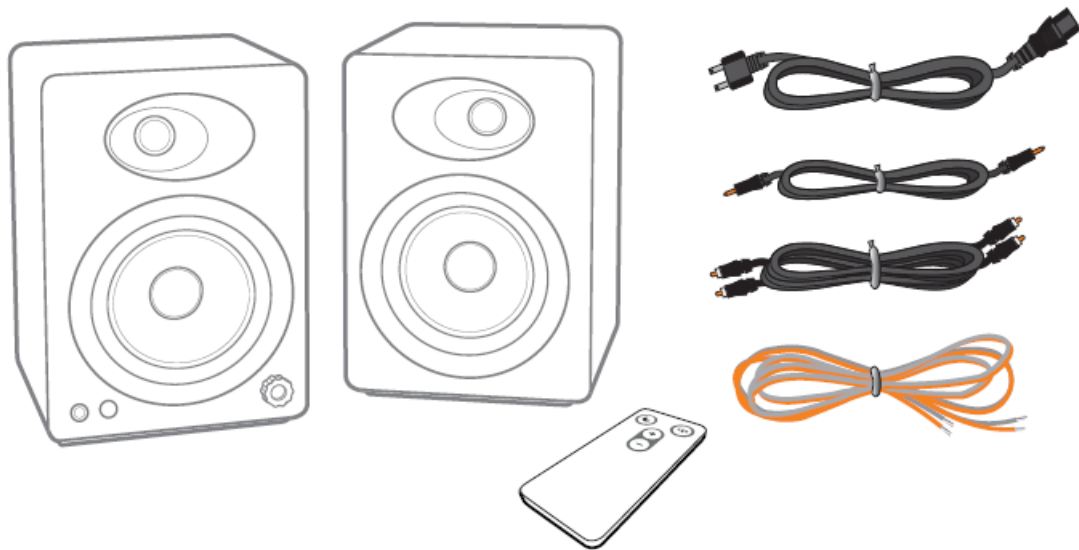
- Built-in power amplifiers
- Dual RCA and mini-jack audio inputs
- USB power charge port
- Remote control
- Front panel volume control
- Variable preamp audio output
- Gold-plated connectors
- Full-size 5-way speaker binding posts
- Custom Kevlar woofers and silk tweeters
- Hand-built MDF wood cabinets
- Magnetically-shielded
- Cables included

Works With

- Any computer (Mac or PC)
- iPod, iPhone, and iPad (all iDevices)
- Audioengine wireless audio adapters
- Apple Airport Express + Airplay
- Any product with mini-jack or RCA audio outputs

What's in the Box

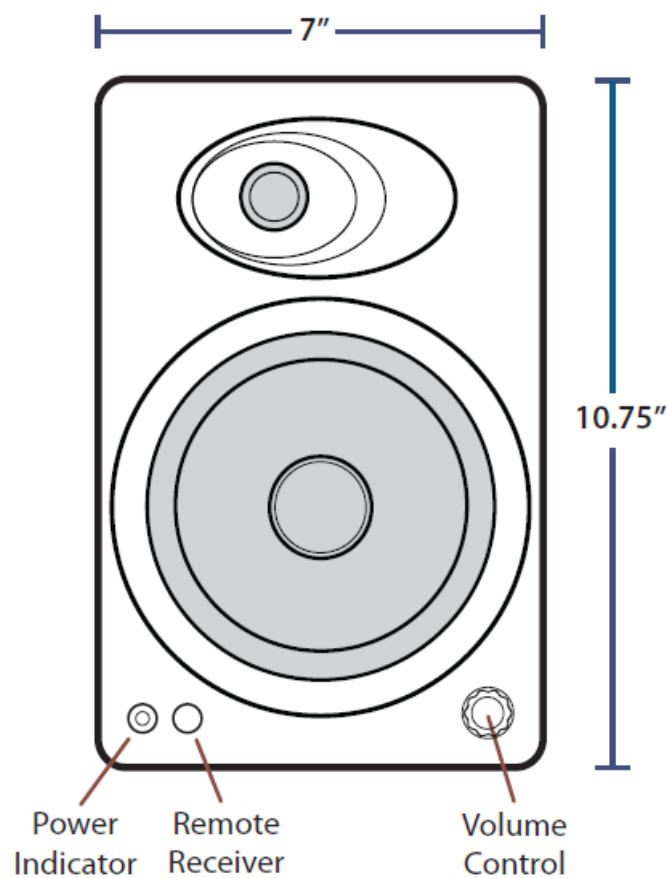
1. A5+ powered (left) speaker
2. A5+ passive (right) speaker
3. Remote control
4. Speaker wire (16AWG), 3.75 meters (~12.3ft)
5. Detachable AC power cord
6. 3.5mm mini-jack to mini-jack audio cable, 2 meters (~6.5ft)
7. RCA to RCA audio cable, 2 meters (~6.5ft)
8. Cloth speaker bag
9. Cloth cable bag
10. Setup guide
11. Product line brochure



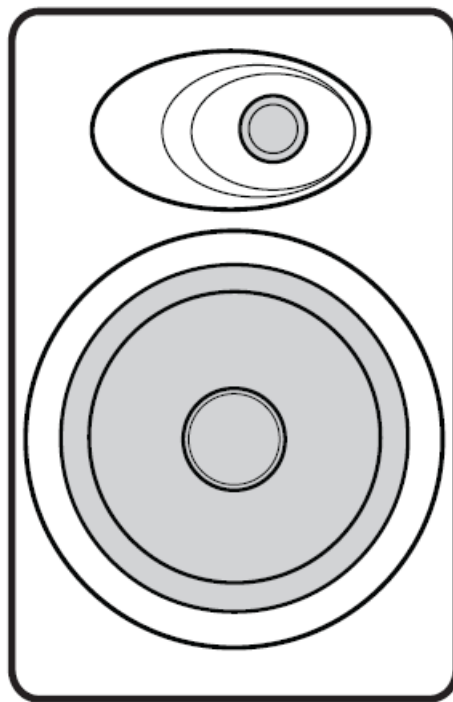
Unpacking

Your Audioengine 5+ speakers were carefully tested and inspected before packaging and shipping. After unpacking please check for any damage. It is rare that any damage occurs during shipping, but if this does happen contact the shipping company immediately. We also recommend that you keep the original carton and packing material.

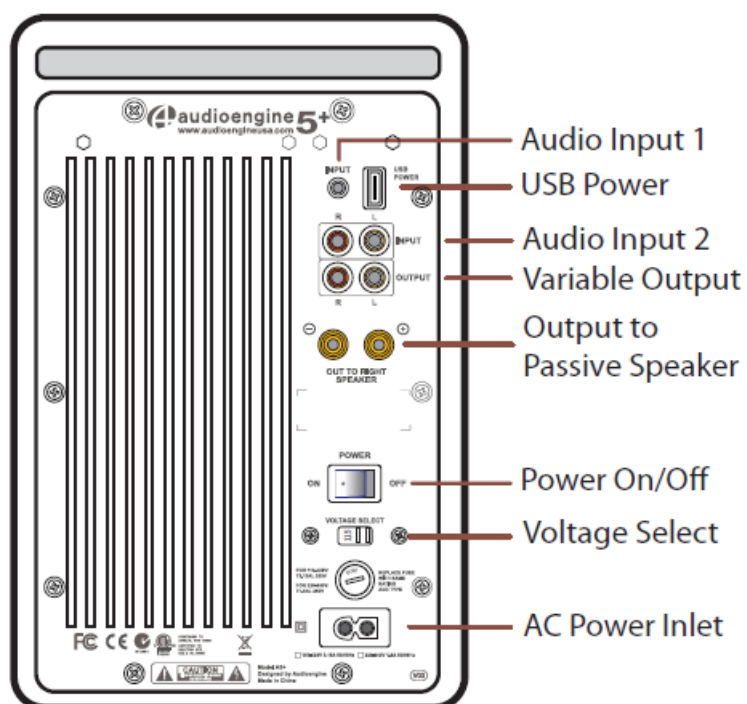
A5+ Front Left (Active/Powered)



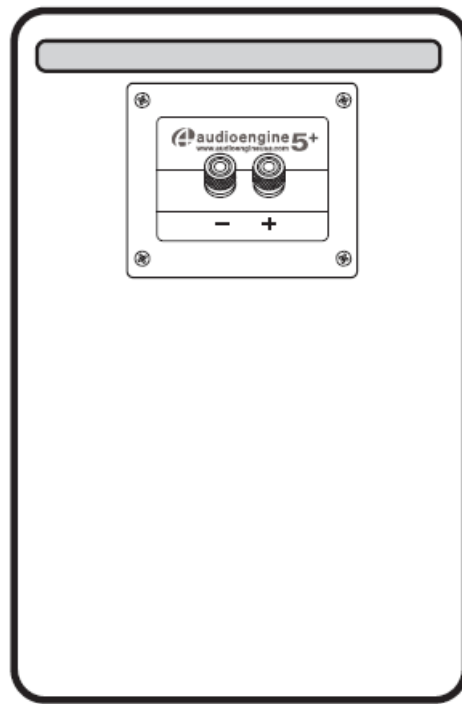
A5+ Front Right (Passive)



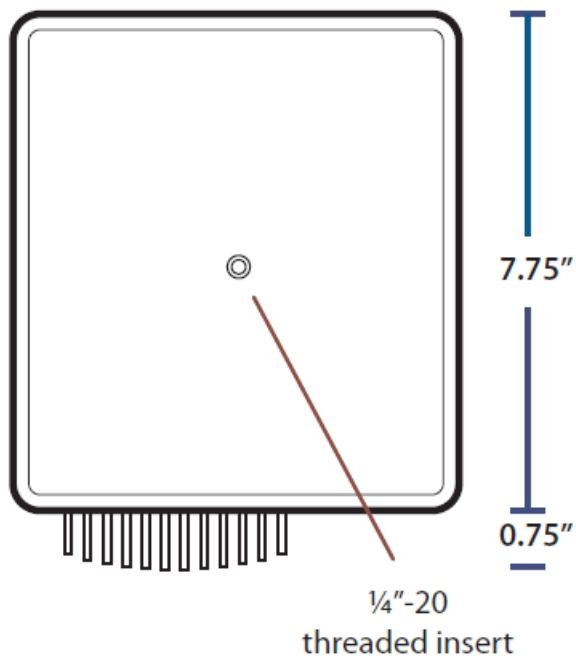
A5+ Back Left



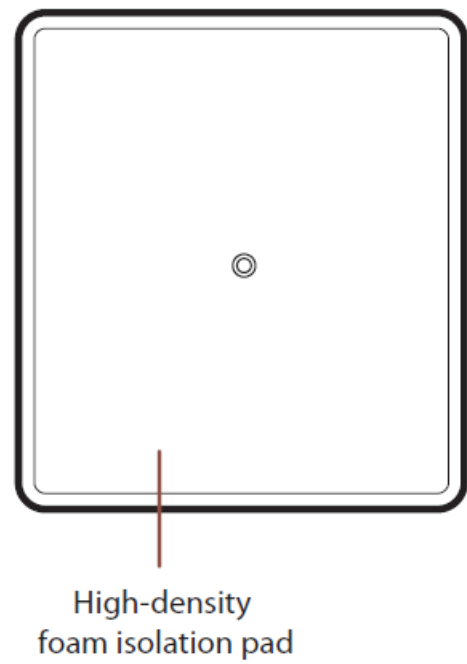
A5+ Back Right



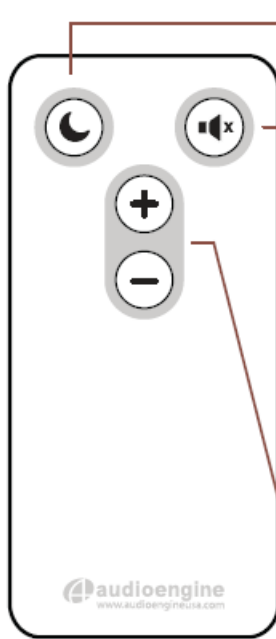
A5+ Bottom Left



A5+ Bottom Right



Remote Control



Sleep

This button puts A5+ into a power-saving Sleep Mode, shown by the front panel power indicator as a slow pulse. To exit Sleep press the Sleep button again.

Note that you can also put the A5+ into and out of Sleep Mode by pressing the front panel volume knob.

Mute

Press the Mute button to silence the A5+. The front panel indicator will blink showing that the speaker is muted. Press Mute again to unmute the volume.

Note that you can also bring the A5+ out of mute by pressing Volume (+) or (-) or turn the front panel volume knob.

Volume

Press Volume (+) or (-) to adjust the A5+ volume level.

Setup and Operation

Step 1 – Speaker Placement

Although your Audioengine 5+ speakers are very forgiving with regards to placement, it's true that proper speaker placement can have an impact on sound quality. There seem to be different theories on correct speaker placement but rooms and tastes are different so it's difficult to recommend a perfect setup. We do suggest you feel free to experiment to see what works for you.

As a general rule of thumb for the best soundstage and imaging, the speakers should be equidistant from side walls and a different distance from rear walls. Tweeters should be at about eye-level in your most frequent listening location and for the best bass response we recommend at least 6 inches of clearance between the rear of the speakers and the wall behind them.

Here are a few more suggestions, assuming you have some edibility regarding where you place your speakers. No need for concern if your situation and listening environment dictate the speakers' position.

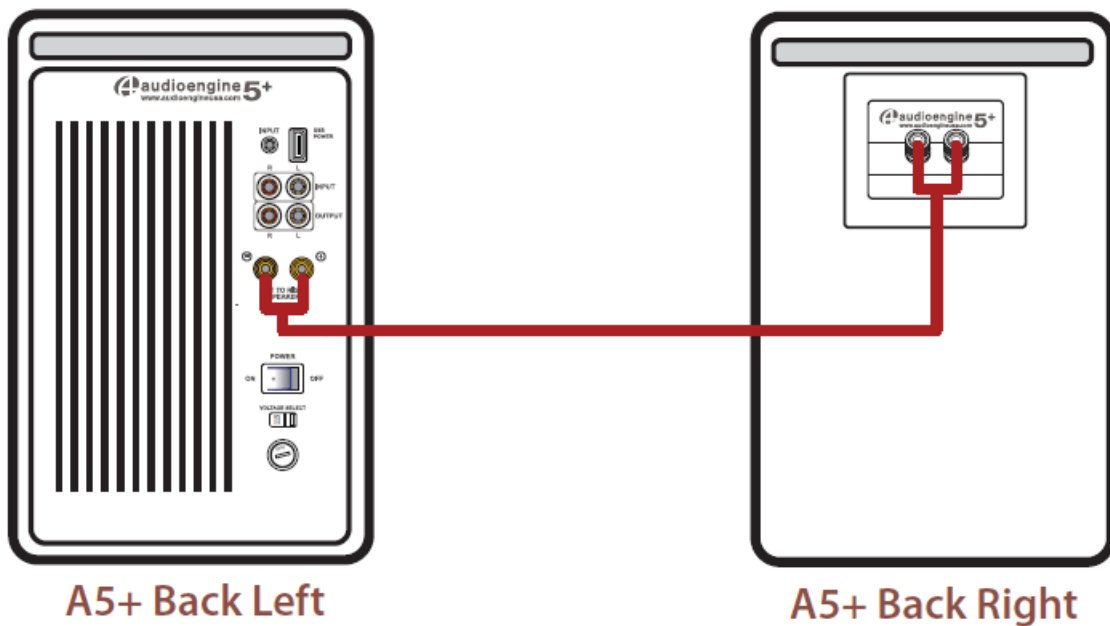
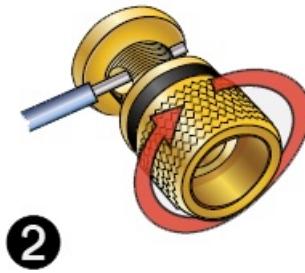
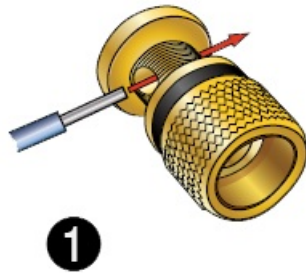
- Both speakers should be equidistant from your primary listening position.
- Placing the speakers at least 6 feet (1.8m) apart usually provides the best imaging.
- Try to keep the speakers near the front edge of shelves or cabinets.
- Allow at least 6 inches of clearance between the rear of the speakers and the wall or surface behind them.
- If you need to turn the speakers on their sides, position the tweeters toward the outside.
- If used on a desktop for computer speakers, it's best if they are placed on a solid surface

Step 2 – Connecting the Speaker Wire

The Audioengine 5+ speakers have amplifiers built into the left cabinet and the included speaker wire is used to connect both speakers to each other. The A5+ uses high quality, five-way gold plated binding posts that will

accept heavy gauge bare wire, banana plugs, spade lugs, or pin terminators.

1. Use your thumb and finger to unscrew the binding post connectors on the back of each speaker.
2. Insert each speaker wire into the holes on the side of binding post connectors, making sure to connect the positive (+) terminal on the left speaker to the positive (+) terminal on the right speaker.
3. Retighten the binding posts with your fingers.
4. Verify that only the exposed portion of the speaker wire is secured only in each connector.
5. Make sure that none of the speaker wire strands have come in contact with an adjoining terminal.

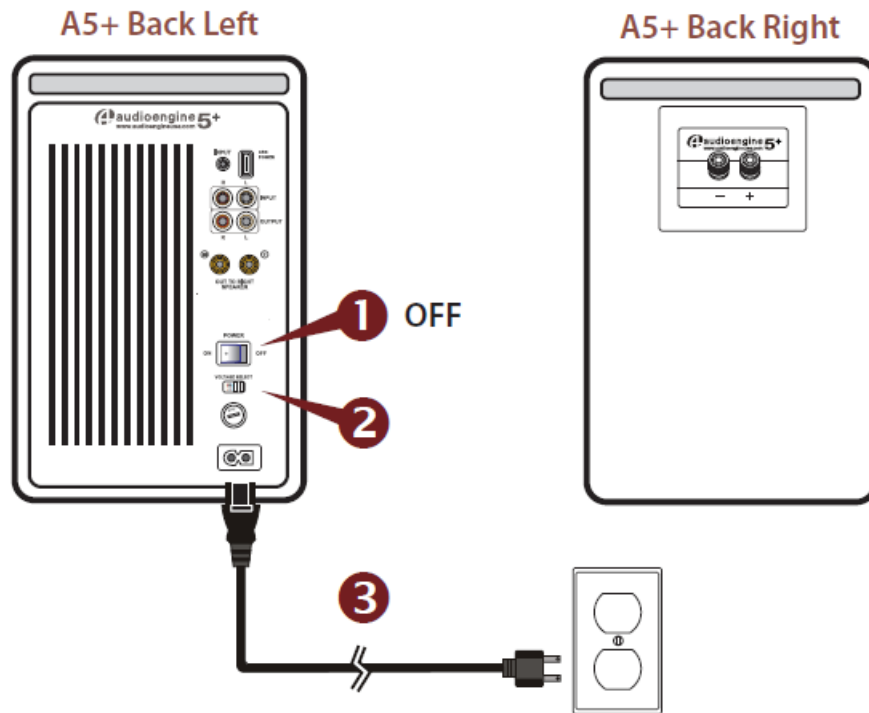


Note:

As the Audioengine 5+ speaker system includes built-in power amplifiers, do not connect the speaker terminals to the speaker outputs of a stereo receiver or amplifier.

Step 3 – Connecting the Power Cord

1. Verify that the power switch on the left speaker rear panel is in the OFF position.
2. Confirm that the rear panel voltage selector switch is set to the proper voltage for your area.
3. Connect the power cord into the left speaker and the other end into an AC power outlet.



Note:

We recommend using a high-quality surge suppressor and/or AC line filter on all electronics equipment.

Step 4 – Connecting Audio Cables

Using the appropriate audio cable (3.5" mini-jack and/or RCA cable), connect your audio source (computer, iPod, etc.) to the A5+ audio inputs. One of each cable type is included.

Note:

Both audio inputs on the A5+ are active so two audio sources may be connected to the speakers at the same time without the need for an input switch.

Step 5 – Operation

1. Move the A5+ rear panel power switch to the ON position. The left speaker front panel power indicator should flash a few times then go solid.
2. Turn on your audio input source and adjust the volume to the desired listening level.
3. Adjust the A5+ speaker volume level with the volume knob on the front panel or with the included remote control.

Break-in Period

Your speakers will sound great out of the box and will get better over time. No need to do anything else but listen to them, but give them at least 30 to 50 hours break-in time before doing any critical listening.

Cleaning

We don't recommend using any solvents or cleaners on Audioengine cabinets or speakers. Just wipe down with a soft, dry cloth.

Other Features

Variable Output

The A5+ includes a variable preamp audio output so you can connect a subwoofer, other Audioengine powered speakers, or an Audioengine wireless adapter to daisy-chain music to other systems around the house. This output is variable (adjustable) so the volume level can be controlled from the A5+ front panel or remote control.

USB Power

The USB port allows you to power and charge your iDevice (iPod, iPhone, iPad, etc.), Audioengine wireless adapters, or any USB powered product through the USB connector on the rear panel.

Note that this is for power only, not USB audio or data transfer.

Stand Mounting

Threaded 1/4"-20 brass inserts are included on the bottom of each speaker cabinet to provide the ability to attach the speakers to freestanding floor stands. These inserts, however, are not designed to support the full weight of the speakers and therefore should not be used with single-point wall or ceiling mounts.

Important Safety Note: It is the customer's responsibility to check with the stand manufacturer to determine whether that specific stand is capable of handling the weight and proportions of these speakers in a safe and stable manner. The customer is also responsible for proper selection of mounting hardware not included with the speaker and for proper assembly. Audioengine disclaims any liability for the selection of suitable floor stands and/or correct hardware between the selected stand and these speakers.

For a complete list of product features and specifications, go to:

www.audioengineusa.com

Troubleshooting

Front panel power indicator is not illuminated

- Verify that the AC power cord is firmly connected to the A5+ rear panel and to an AC power outlet.
- Check that the AC power outlet is supplying power.
- Verify that the rear panel power switch is in the ON position.
- Be sure the rear panel voltage selector matches the operating voltage in your area.
- Check the fuse in the rear panel. If the fuse needs to be replaced it is important to replace with same fuse type and value.
- Verify that the A5+ and your source components are all powered on and the volume levels are not set to minimum.

Front panel indicator light is on solid, but no sound

- Be sure the A5+ is not in MUTE or SLEEP mode (front panel indicator light flashing)
- Check cables to and from your audio sources to make sure they are working and firmly connected at both ends.

Sound through one speaker only

- Check speaker wire connections from the left (powered) speaker to the right (passive) speaker. Confirm by removing the speaker wire from one speaker and reconnecting.
- Check that the cables from your audio sources to the A5+ are properly connected. Confirm by unplugging the audio cables and reconnecting.
- If using a computer, verify that the audio output balance setting is centered.

Lack of bass or poor imaging

- Check speaker wire polarity by verifying that the wires are going to same terminals on both speakers.
- Make sure the speakers are not too close to a wall or other obstruction, which could limit bass output.
- Check the EQ or sound settings on your audio source.

If sound is distorted

- Decrease the volume level of the audio input source and increase the volume of the speakers.

Remote is not working or remote range is reduced

Make sure nothing is blocking the remote receiver, which is in the left speaker.

- Check the remote battery to be sure it is installed correctly.
- Replace the battery (see back of remote control for battery type and replacement instructions)

Hum

Adding a new component could bring out hum or buzz that may not have existed before. Your first assumption may be that something may be wrong with your new gear but this is generally caused by a “ground-loop” in your system. Consider these tips for possible solutions:

- First try moving all components to the same electrical circuit or AC power outlet.
- If the hum or buzz is still present, power off all gear and remove the mini-jack and/or RCA audio cables to and from the A5+.
- Turn the A5+ back on and check for hum. If the noise is still audible try plugging the A5+ AC power cord into a different AC outlet.
- If the hum goes away while the audio cables are still disconnected, the noise is likely coming from another component in your system. Connect each component back one at a time and the one that causes the system to hum is likely the culprit.
- A common ground-loop source is from cable TV or satellite cables. If the hum or buzz persists after trying the previous tips, disconnect the coaxial cable from your cable box, TV, or DVR and if the hum goes away the cable is the cause. In this case you can get a ground-loop isolator from your local electronics store. These are inexpensive and easy to connect inline with your video cable.
- Sometimes something as simple as a portable heater or dehumidifier will add noise into your wall wiring that could be picked up by your audio gear. A dimmer switch on a halogen lamp, a wireless internet router, or

cordless phone near the amplifier, for example, could also all be culprits.

- The best overall solutions are to use an AC line filter, plug the unit into a different AC circuit, or in the case of noise introduced by a wireless router, for example, move it further away from your audio gear.

General Specifications

- Type: 2.0 powered (active) speaker system
- Power output: 150W peak power total
: (50W RMS, 75W peak per channel), AES
- Amplifier type: Dual Class AB monolithic
- Drivers: 5" Kevlar woofers, 20mm silk dome tweeters
- Inputs: 3.5mm stereo mini-jack, RCA L/R
- Outputs: RCA L/R audio (full-range, adjustable); USB Type A (power/charge)
- Voltages: 115/240V, 50/60Hz manually-switchable
- Signal-to-noise: >95dB (typical A-weighted)
- THD: <0.05% at all power settings
- Crosstalk: <50db
- Frequency response: 50Hz-22kHz ± 1.5 dB
- Input impedance: 10K ohms unbalanced
- Protection: Output current limiting, thermal over-temperature, power on/off transient protection, replaceable external main fuse
- Power Consumption Idle, Mute, Sleep: 10W • 6W • 4W
- Dimensions (HWD): 10.75" (27 cm) x 7" (18 cm) x 7.75" (20 cm) each
- Weight (Left): 15.4 lbs (7 kg)
- Weight (Right): 9.6 lbs (4.4 kg)
- Shipping weight: 31 lbs (14 kg)
- Shipping box dims: 11.5" (W) x 14.5" (H) x 21.75" (L)

Environmental Requirements:

- Operating temperature: 32° to 88°F (0° to 31°C)
- Non-operating temperature: -4° to 113°F (-20° to 45°C)
- Relative humidity: 5% to 95% non-condensing

Contact Us

If you have any questions or feel you may need service, contact the reseller where you purchased your product or feel free to email us directly at: support@audioengineusa.com or call toll-free in the United States: (877) 853-4447

About Audioengine

Audioengine designs and builds innovative audio products with all your music in mind. Great sound, simple but elegant designs, high-quality materials, and truly useful features are what Audioengine is about. We sincerely hope you get as much enjoyment from our products as we've had creating them! For information about our other products go to: www.audioengineusa.com

Information for Users on Disposal of Old Equipment [European Union]



This symbol indicates that the electrical and electronic equipment should not be disposed as general household waste at its end-of-life. Instead, the product should be handed over to the applicable collection point for the recycling in accordance with your national legislation. By disposing of this product correctly, you will help to conserve the environment and human health that could otherwise be caused by inappropriate waste handling of this product. For more information about collection point and recycling of this product, please contact your household waste disposal service or the shop where you purchased the product. Penalties may be applicable for incorrect disposal of this waste, in accordance with national legislation.

[Other Countries outside the European Union]

If you wish to dispose of this product, please do so in accordance with applicable national legislation or other rules in your country for the treatment of old electrical and electronic equipment.

Warranty

Period

All Audioengine products have a 3-year Limited Warranty on parts and labor from date of purchase. Your warranty is automatic so there is no need to register. This Limited Warranty applies only to Audioengine products purchased in the contiguous United States. For Limited Warranty coverage elsewhere please contact your Audioengine dealer, reseller, or distributor.

What is covered

All defective parts or faulty workmanship.

What is not covered

The Audioengine Limited Warranty does not cover damage caused by accident, misuse, abuse, neglect, excessive moisture, lightning, power surges, other acts of nature, unauthorized product modification or repairs, or failure to follow the instructions outlined in this Setup Guide.

What we will do

We will repair or replace any defective parts, at our option, within a reasonable amount of time and free of charge any time during the warranty period. After service, we will ship the product to an address in the contiguous United States at our expense by the shipping method of our choice.

What we ask from you

You will be responsible for shipping or transportation charges directly to Audioengine or to an authorized dealer. We recommend you keep the original shipping materials, as it is important that you package the product so that it will not be damaged during shipping. Audioengine cannot be responsible for any damages incurred during shipping due to poor packing, so please pack well and insure your shipment.

How to obtain Audioengine Warranty service

If you have any questions about your warranty coverage or you think you may need service, email the

Audioengine Authorized Service Center at: support@audioengineusa.com or call toll-free in the United States: (877) 853-4447. We will do everything we can to answer your questions and resolve any issues as quickly as possible.

Exclusive Remedy

This Limited Warranty is fully transferable provided that the current owner furnishes the original proof of purchase and that the serial number on the product is intact. THE MAXIMUM LIABILITY OF AUDIOENGINE SHALL NOT EXCEED THE ACTUAL PURCHASE PRICE PAID BY YOU FOR THE PRODUCT. IN NO EVENT SHALL AUDIOENGINE BE LIABLE FOR SPECIAL, INCIDENTAL, CONSEQUENTIAL OR INDIRECT DAMAGES.

Product Returns and Refunds

Your satisfaction is guaranteed! Should you have a problem or are not satisfied with any Audioengine product, send us an email at: support@audioengineusa.com or call toll-free in the United States: (877) 853-4447.

A5+ Classic Quick Setup

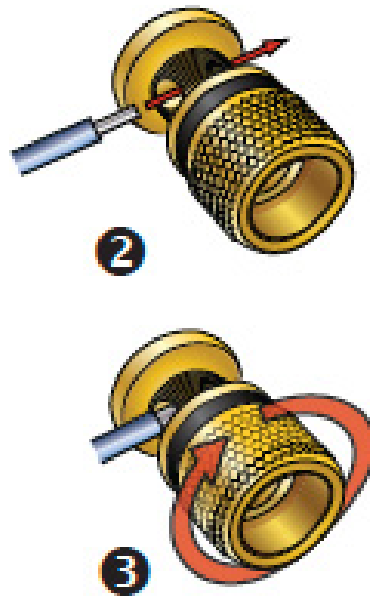
Step 1 – Speaker Placement

Although your Audioengine 5+ speakers are very forgiving with regards to placement, it's true that proper speaker placement can have an impact on sound quality. There seem to be different theories on correct speaker placement but rooms and tastes are different so it's difficult to recommend a perfect setup. We do suggest you feel free to experiment to see what works for you. As a general rule of thumb for the best soundstage and imaging, the speakers should be equidistant from side walls and a different distance from rear walls. Tweeters should be at about eye-level in your most frequent listening location and for the best bass response we recommend at least 6 inches of clearance between the rear of the speakers and the wall behind them. Here are a few more suggestions, assuming you have some exibility regarding where you place your speakers. No need for concern if your situation and listening environment dictate the speakers' position.

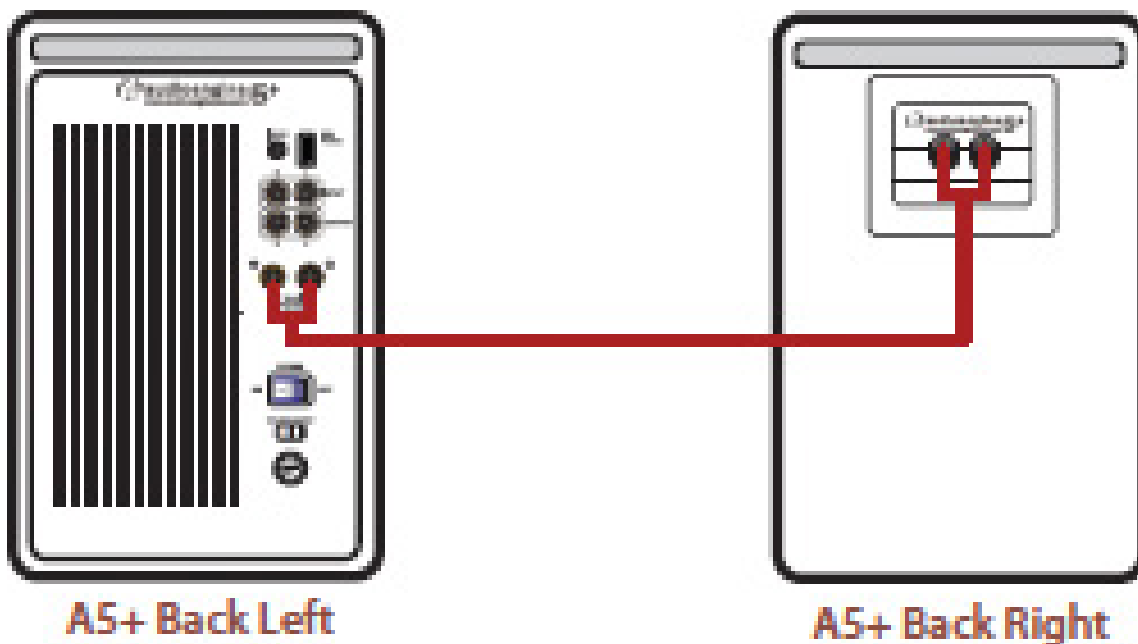
- Both speakers should be equidistant from your primary listening position.
- Placing the speakers at least 6 feet (1.8m) apart usually provides the best imaging.
- Try to keep the speakers near the front edge of shelves or cabinets.
- Allow at least 6 inches of clearance between the rear of the speakers and the wall or surface behind them.
- If you need to turn the speakers on their sides, position the tweeters toward the outside.
- If used on a desktop for computer speakers, it's best if they are placed on a solid surface

Step 2 – Connecting the Speaker Wire

The Audioengine 5+ speakers have amplifiers built into the left cabinet and the included speaker wire is used to connect both speakers to each other. The A5+ uses high quality, ve-way gold plated binding posts that will accept heavy gauge bare wire, banana plugs, spade lugs, or pin terminators.



1. Use your thumb and finger to unscrew the binding post connectors on the back of each speaker.
2. Insert each speaker wire into the holes on the side of binding post connectors, making sure to connect the positive (+) terminal on the left speaker to the positive (+) terminal on the right speaker.
3. Retighten the binding posts with your fingers.
4. Verify that only the exposed portion of the speaker wire is secured firmly in each connector.
5. Make sure that none of the speaker wire strands have come in contact with an adjoining terminal.



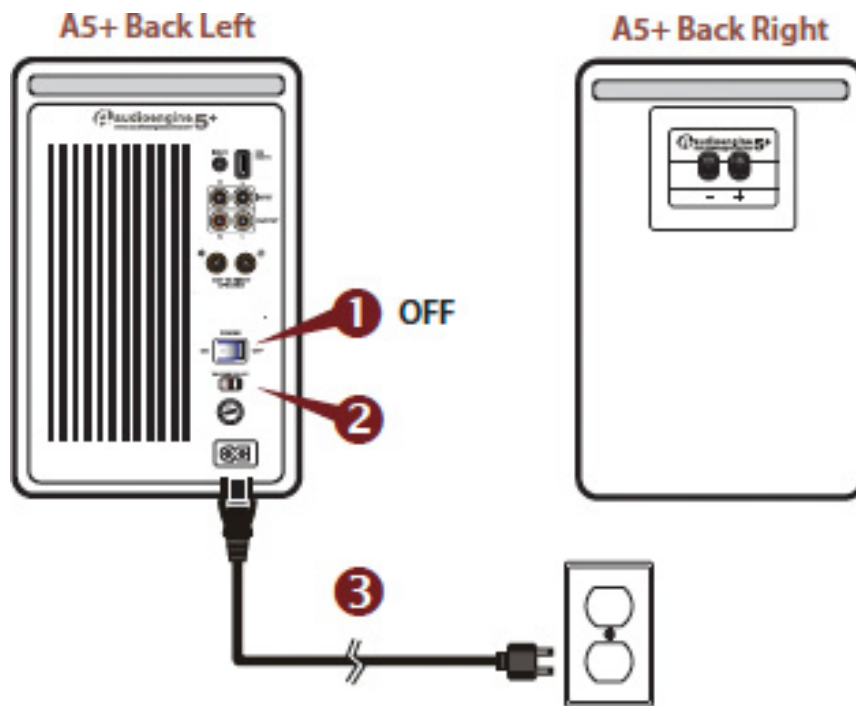
Note:

As the Audioengine 5+ speaker system includes built-in power amplifiers, do not connect the speaker terminals to the speaker outputs of a stereo receiver or amplifier.

Step 3 – Connecting the Power Cord

1. Verify that the power switch on the left speaker rear panel is in the OFF position.
2. Connect that the rear panel voltage selector switch is set to the proper voltage for your area.

3. Connect the power cord into the left speaker and the other end into an AC power outlet.



Note:

We recommend using a high-quality surge suppressor and/or AC line filter on all electronics equipment.

Step 4 – Connecting Audio Cables

Using the appropriate audio cable (3.5" mini-jack and/or RCA cable), connect your audio source (computer, iPod, etc.) to the A5+ audio inputs. One of each cable type is included.

Note:

Both audio inputs on the A5+ are active so two audio sources may be connected to the speakers at the same time without the need for an input switch.

Step 5 – Operation

1. Move the A5+ rear panel power switch to the ON position. The left speaker front panel power indicator should flash a few times then go solid.
2. Turn on your audio input source and adjust the volume to the desired listening level.
3. Adjust the A5+ speaker volume level with the volume knob on the front panel or with the included remote control.

A5+ CLASSIC SETUP VIDEO



https://manuals.plus/wp-content/uploads/2021/05/A5_How_To.mp4

A5+ Classic Troubleshooting Tips

The following troubleshooting tips can help diagnose and correct most concerns with the A5+ Classic. We have attempted to make this list as comprehensive as possible, so some of these may not apply to your issue, but please go through each tip.

If the power indicator on the A5+ front panel is not illuminated, then try these tips:

1. Verify that the AC power cord is connected to the speaker rear panel and to a working AC power outlet.
2. Check that the speaker's power switch is in the ON position.
3. Check that the rear panel voltage selector matches the operating voltage in your country or region.
4. If there is still no power, check the fuse in the rear panel. If the fuse is blown and needs to be replaced it is important to replace with same fuse type and value.

If the front panel indicator light is on but you are experiencing an audio-related or other issue, try these tips:

1. Power-cycle the speakers by switching them off and back on using the power switch on the rear panel.
2. Be sure the speakers are not in MUTE or SLEEP mode (if so, the front panel indicator light will be flashing).
3. Check that the cables from your audio sources to the speaker are properly connected. Confirm by unplugging the audio cables and then reconnecting. Try using as many different inputs and input sources as possible to see if the problem follows.
4. Check speaker wire connections from the left (powered) speaker to the right (passive) speaker. Confirm by removing the speaker wire from on each speaker and reconnecting. Also check speaker wire polarity by verifying that the wires are going to same terminals on both speakers.
5. Verify that your audio input source components or devices are all powered on and the volume levels are turned up.
6. If using a computer, verify that the audio output balance setting is centered for the OS and all apps.
7. Make sure the speakers are not too close to a wall or other obstruction, which could limit bass output.
8. Decrease the volume level of the audio input source and increase the volume of the speakers.
9. If you are using a wireless adapter, preamp, or external DAC with these speakers, remove these (temporarily) and connect the audio source directly to the speakers.
10. If your input source has its own EQ or other sound settings, make sure they are all temporarily turned off.
11. Also try moving the speakers to a different location to see if something is causing interference in the current location. Something as simple as a wireless internet router, cordless or mobile phone, or halogen lamp near the speakers can all cause interference.

A5+ troubleshooting tips – remote control

Remote control is not working or remote range is reduced.

1. Make sure nothing is blocking the remote control receiver, which is in the left powered speaker.
2. Check the remote battery to be sure it is installed correctly.
3. Replace the battery with another CR2025 battery

Downloads

Audioengine A5+ Speaker System Manual – [Download](#)