

[Skip to content](#)

Manuals+

User Manuals Simplified.



Audioengine A2+ Speaker System Manual

[Home](#) » [audioengine](#) » Audioengine A2+ Speaker System Manual

Contents [hide](#)

[1 Audioengine A2+ Setup Guide](#)

[2 www.audioengineusa.com](#)

[3 Premium Powered Desktop Speakers](#)

[4 Basic Safety Instructions](#)

[5 Introduction](#)

[6 Unpacking](#)

[7 Whats in the box](#)

[8 Cleaning](#)

[9 Placement](#)

[10 Features](#)

[11 Setup and Operation](#)

[12 Speaker wire connection](#)

[13 Basic Troubleshooting](#)

[14 Warranty](#)

[15 What is covered](#)

[16 What is not covered](#)

[17 What we will do](#)

[18 What we ask from you](#)

[19 How to obtain Audioengine Warranty service](#)

[20 Exclusive Remedy](#)

[21 Product Returns and Refunds](#)

[22 General Specifications](#)

[23 About Audioengine](#)

[24 Support](#)

[25 A2+ Classic Quick Setup](#)

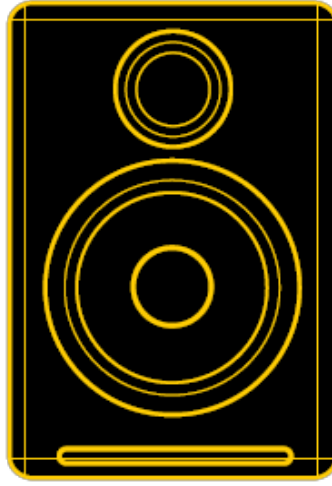
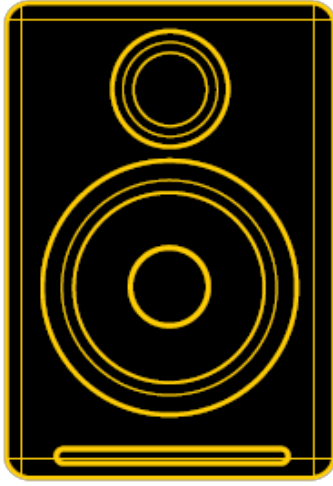
[25.1 A2+ SETUP VIDEO](#)

[26 A2+ Classic Troubleshooting Tips](#)

[26.1 Downloads](#)

[26.2 Related Posts](#)

Audioengine A2+ Setup Guide



www.audioengineusa.com

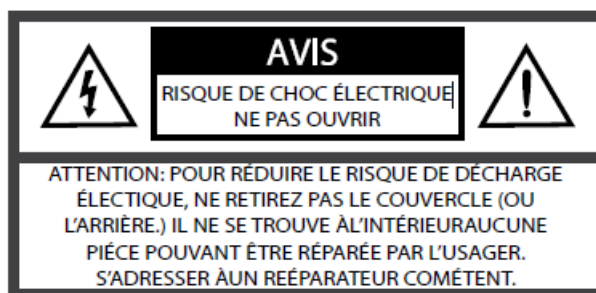
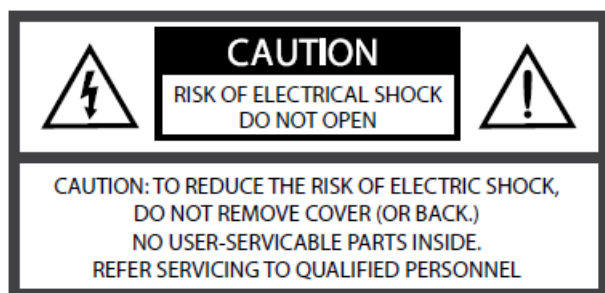
Premium Powered Desktop Speakers

Basic Safety Instructions

- Read these instructions for all components before using this product.
- Keep these instructions for future reference. Heed all warnings on the product and in the owner's guide. Follow all instructions.
- Do not use this apparatus near water or moisture. Do not use this product near a bathtub, washbowl, kitchen sink, laundry tub, in a wet basement, near a swimming pool, or anywhere else that water or moisture are present.
 - Clean only with a dry cloth and as directed by the manufacturer. Unplug this product from the wall outlet before cleaning.
- Do not block any ventilation openings. Install in accordance with the manufacturer's instructions. To ensure reliable operation of the product and to protect it from overheating, put the product in a position and location that will not interfere with its proper ventilation. For example, do not place the product on a bed, sofa, or similar surface that may block the ventilation openings. Do not put it in a built-in system, such as a bookcase or a cabinet that may keep air from flowing through its ventilation openings.
- Do not install near any heat sources, such as radiators, heat registers, stoves or other apparatus that produce heat.
- Do not defeat the safety purpose of the polarized or grounding-type plug. A polarized plug has two blades with one wider than the other. A grounding-type plug has two blades and a third grounding prong. The wider blade or third prong are provided for your safety. If the provided plug does not fit in your outlet, consult an electrician for replacement of the obsolete outlet.
- Protect the power cord from being walked on or pinched, particularly at plugs, convenience receptacles, and the point where they exit from the apparatus.
- Only use attachments or accessories specified by the manufacturer.
- Use only with the cart, stand, tripod, bracket or table. When a cart is used, use caution when moving the cart/apparatus combination to avoid injury from tip-over.
- Unplug this apparatus during lightning storms or when unused for long periods of time to prevent damage to this product.
- Refer all servicing to qualified service personnel.
- Servicing is required when the apparatus has been damaged in any way such as power supply cord or plug is damaged, liquid has been spilled or objects have fallen into the apparatus, the apparatus has been exposed to rain or moisture, does not operate normally, or has been dropped.
- Do not attempt to service this product yourself. Opening or removing covers may expose you to dangerous voltages or other hazards. Please contact the manufacturer to be referred to an authorized service center near you.
- To prevent risk of fire or electric shock, avoid over loading wall outlets, extension cords, or integral convenience receptacles.

- Do not let objects or liquids enter the product as they may touch dangerous voltage points or short out parts that could result in a fire or electrical shock.
- See product enclosure bottom for safety related markings.
- Use Proper Power Sources. Plug the product into a proper power source, as described in the operating instructions or as marked on the product.
- Avoid power lines— Use extreme care when installing an outside antenna system to keep from touching power lines or circuits, as contact with them may be fatal. Do not install external antennas near overhead power lines or other electric light or power circuits, nor where an antenna can fall into such circuits or power lines.

This device complies with part 15 of the FCC Rules. Operation is subject to the following two conditions: This device may not cause harmful interference and this device must accept any interference received, including interference that may cause undesired operation.



Introduction

Welcome to the Audioengine family and congratulations on your purchase of the A2+ Premium Powered Desktop Speakers. The Audioengine team is dedicated to bringing you the highest quality listening experience possible and the A2+ is designed with the same attention to detail and operational simplicity as other Audioengine products. Our goal is to get you to your music as simply as possible without all the “gadget tinkering” that other products generally require. As with our other past efforts, we thank all our customers and resellers for helping us create another great Audioengine product!

Unpacking

Your Audioengine speakers were carefully tested and inspected before packaging and shipping. After unpacking please check for any damage. It is rare that a unit is damaged during shipping, but if this does happen contact the shipping company immediately. We recommend that you keep the original carton and packing material for any possible future shipping.

Whats in the box

1. A2+ powered (left) speaker
2. A2+ passive (right) speaker
3. Speaker wire, 2 meters (~6.5 feet)
4. Power supply
5. Power cord
6. Mini-jack audio cable, 1.5 meters (~5 feet)
7. USB cable, 1.5 meters (~5 feet)
8. Microfiber speaker bag
9. Microfiber power supply bag
10. Microfiber cable bag
11. Setup guide
12. Product line brochure

Cleaning

Your A2+ speakers are designed for years of use with no maintenance as long as you avoid exposure of the speakers to moisture or high temperatures. The hand-finished MDF wood cabinets are very durable and are easily cleaned by wiping down with a soft, dry cloth. We do not recommend using cleaners or solvents.

Placement

Place your Audioengine 2+ speakers at a comfortable listening location with no obstructions at the front or back. If you find that raising them to an angle produces the best sound, this is easily achieved by adding the DS1 Desktop Stands (available separately).

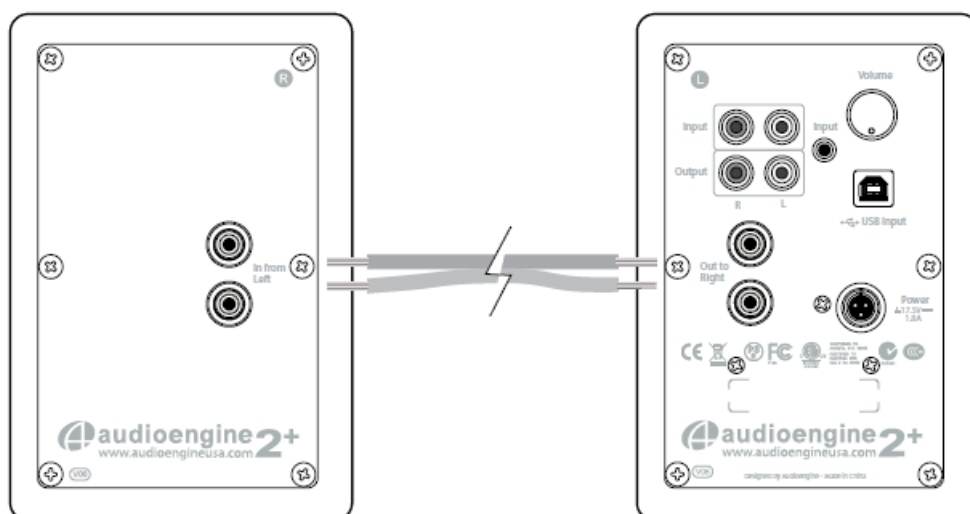
We recommend at least 3 inches of clearance around the back of the cabinet for good air circulation.

Features

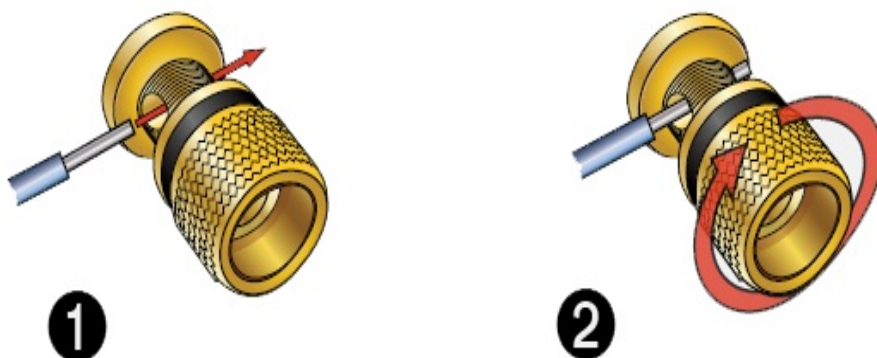
- Built-in power amplifiers
- Dual audio inputs
- USB computer audio input
- Variable audio output
- High-quality connectors
- Custom Kevlar woofers and silk dome tweeters
- Power-saving idle mode
- Hand-built cabinets
- Magnetically shielded
- Cables included

Setup and Operation

Step 1 – Connecting the speaker wire



Speaker wire connection



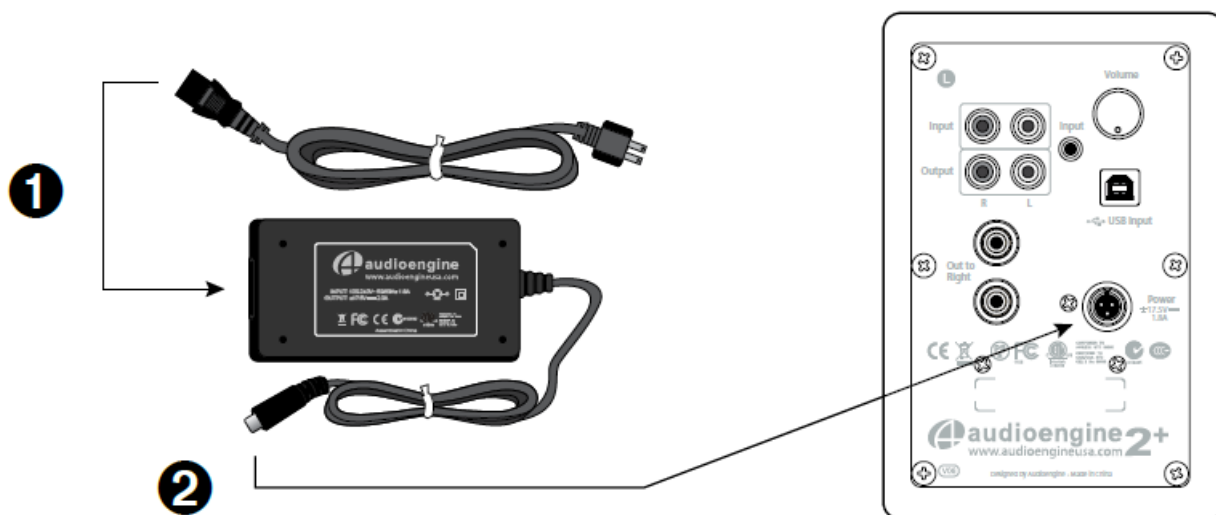
1. Use your thumb and finger to unscrew the connectors.
2. Insert each speaker wire into the holes on the side of connectors.
3. Retighten the connectors with your fingers.

4. The bare portion of the wire should be secured firmly in each connector.

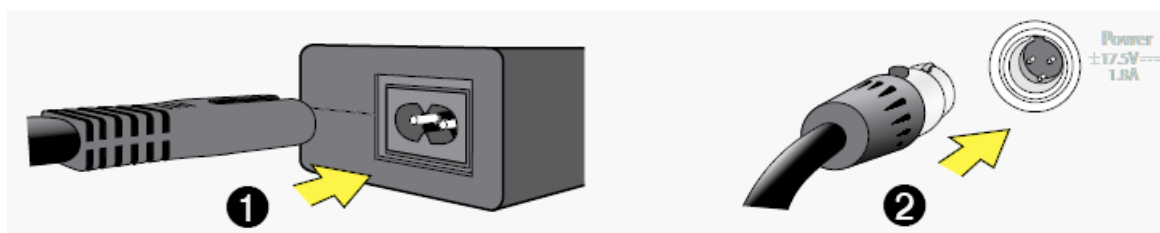
Repeat the procedure to connect the other end of the speaker wire to the other speaker. Check to make sure none of the speaker wire strands have come in contact with a nearby connector.

As the A2+ speakers have the power amplifiers built inside, do not connect the speaker terminals to the speaker outputs of a stereo receiver.

Step 2 – Connecting the Power Supply



Power cord connection



Verify that the volume/power switch on the rear panel of the left speaker is in the OFF position by rotating it counterclockwise until it clicks off.

1. Connect the cable from the power supply to the left speaker rear panel.
2. Connect the power cable to the other end of the power supply.
3. Connect the power cable to an AC power outlet.
4. Verify that the LED indicator on the power supply is illuminated.

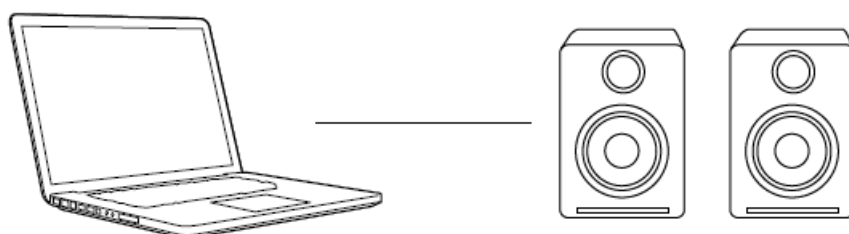
Use only the power supply provided with the speakers.

Step 3 – Connecting an Audio Source

Using the appropriate audio cable, connect the speaker inputs to your audio source (computer, iPhone, iPad, etc.). One example is shown in the diagram.



Another option for connecting a computer to A2+ is via USB audio. Using the included USB cable, connect as shown in the diagram.



For PC, the A2+ should be recognized automatically.

For Mac, under System Preferences/Sound/Output, select "Audioengine 2+."

For advanced setup tips visit: audioengineusa.com

Step 4 – Enjoying your Speakers

1. Turn on the rear panel volume/power knob and set the volume control to about 3 o'clock.
2. Turn on your audio source and adjust the volume to your desired listening level.

Two audio sources may be connected to the speakers at the same time. To adjust the volume, we recommend using the individual volume controls on each source.

We recommend using a high-quality surge suppressor and/or AC line filter on all electronics equipment.

Basic Troubleshooting

If the LED indicator on the power supply is not illuminated:

- Check to see that the power cord is securely connected to the power supply and to an AC power outlet.
- Check that the AC power outlet is supplying power.

If the speakers do not produce sound:

- Check that the cable from the power supply is connected to the rear panel, and that the LED indicator on the power supply is illuminated.
- Check that the volume/power knob on the rear panel is not set to minimum volume or powered off (we recommend at least a 10 o'clock position).
- Check that the volume level of your audio source is not set to minimum or powered off.
- Check that the wire from your audio source to your speakers is properly connected (occasionally the 1/8" cable feels as if it is inserted all the way, but is not).

If the speakers produce sound from the left speaker but not the right:

- Check that the speaker wires are correctly connected between the left and right speaker connectors.
- Check that the cable from your audio source to the speakers is properly connected.

If the sound is distorted:

- Decrease the volume of the input audio source and increase the volume of the speakers.

Warranty**Period**

All Audioengine products have a 3-year Limited Warranty on parts and labor from date of purchase. Your warranty is automatic, so there is no need to register. This Limited Warranty applies only to Audioengine products purchased in the Continental United States. For Limited Warranty coverage elsewhere, please contact your Audioengine dealer, reseller, or distributor.

What is covered

All defective parts or faulty workmanship.

What is not covered

The Audioengine Limited Warranty does not cover damage caused by accident, misuse, abuse, neglect, excessive moisture, lightning, power surges, other acts of nature, unauthorized product modification or repairs, or failure to follow the instructions outlined in the Setup Guide.

What we will do

We will repair or replace any defective parts, at our option, within a reasonable amount of time and free of charge any time during the warranty period. After service, we will be responsible for shipping the product back to you at our expense.

What we ask from you

You will be responsible for shipping or transportation charges directly to Audioengine or to an authorized dealer. We recommend that you keep the original shipping materials, as it is important that you package the product so that it will not be damaged during shipping. Audioengine cannot be responsible for any damages incurred during shipping due to poor packing,

so please pack well and make sure to insure your shipment.

How to obtain Audioengine Warranty service

If you have any questions about your warranty coverage or you think you may need service, email the Audioengine Authorized Service Center at: support@audioengineusa.com or call toll-free in the United States at: (877) 853-4447. We will do everything we can to answer your questions and resolve any issues as quickly as possible.

Exclusive Remedy

This Limited Warranty is fully transferable provided that the current owner furnishes the original proof of purchase and that furnishes the original proof of purchase and that the serial number on the product is intact. THE MAXIMUM LIABILITY OF AUDIOENGINE SHALL NOT EXCEED THE ACTUAL PURCHASE PRICE PAID BY YOU FOR THE PRODUCT. IN NO EVENT SHALL AUDIOENGINE BE LIABLE FOR SPECIAL, INCIDENTAL, CONSEQUENTIAL OR INDIRECT DAMAGES.

Product Returns and Refunds

Your satisfaction is guaranteed! Should you have a problem or are not satisfied with any Audioengine product, send us an email at: **support@audioengineusa.com**

or call toll-free in the United States at: **(877) 853-4447**.

General Specifications

- Type: 2.0 powered multimedia speaker system
- Power output: 60W peak power total (15W RMS / 30W peak per channel), AES
- Inputs: 1/8" stereo mini-jack, RCA, USB
- Voltages: 110-240V, 50/60Hz auto-switching
- Amplifier type: Dual Class AB monolithic
- Drivers: 2.75" Kevlar woofers, 20mm silk dome tweeters
- Signal-to-noise: >95dB (typical A-weighted)
- THD: <0.05% at all power settings
- Crosstalk: <50db
- Frequency response: 65Hz-22kHz +/-2.0dB
- Sensitivity: 88db SPL (1w@1m)
- Input impedance: 10K ohms unbalanced
- Protection: Output current limiting, thermal over-temperature, power on/off transient protection
- Dimensions (each): 6"(H) x 4"(W) x 5.25"(D)
- Weight (LEFT): 4lbs
- Weight (RIGHT): 3lbs
- Shipping weight: 4.6kg (~10lbs) per pair
- Shipping box dims: 10.5" (H) x 15" (L) x 7" (W)

Materials and Construction:

18mm thick MDF cabinets

20mm silk dome tweeters with neodymium magnets

2.75" Kevlar woofers with advanced voice coils

About Audioengine

Audioengine designs and builds innovative audio products with all your music in mind. Great sound, simple but elegant designs, high-quality materials, and truly useful features are what Audioengine is all about. We sincerely hope you get as much enjoyment from our products as we've had creating them! For information about our other products go to:

www.audioengineusa.com

Support

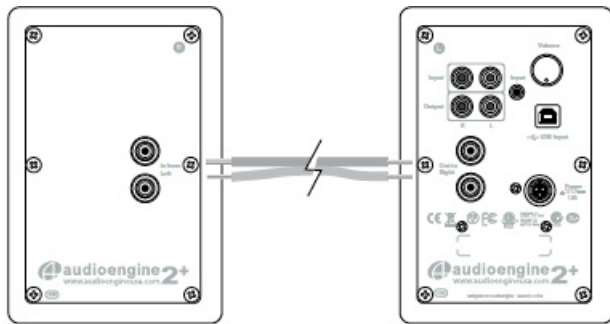
If you have any questions or feel you may need service contact the reseller where you purchased your A2+ or feel free to email us directly at:

support@audioengineusa.com

or call toll-free in the United States: **(877) 853-4447**

A2+ Classic Quick Setup

Step 1 – Connecting the speaker wire



Speaker wire connection



1. Use your thumb and finger to unscrew the connectors.
2. Insert each speaker wire into the holes on the side of connectors.
3. Retighten the connectors with your fingers.
4. The bare portion of the wire should be secured firmly in each connector.

Repeat the procedure to connect the other end of the speaker wire to the other speaker. Check to make sure none of the speaker wire strands have come in contact with a nearby connector.

As the A2+ speakers have the power amplifiers built inside, do not connect the speaker terminals to the speaker outputs of a stereo receiver.

Step 2 – Connecting the Power Supply



Power cord connection



Verify that the volume/power switch on the rear panel of the left speaker is in the OFF position by rotating it counterclockwise until it clicks off.

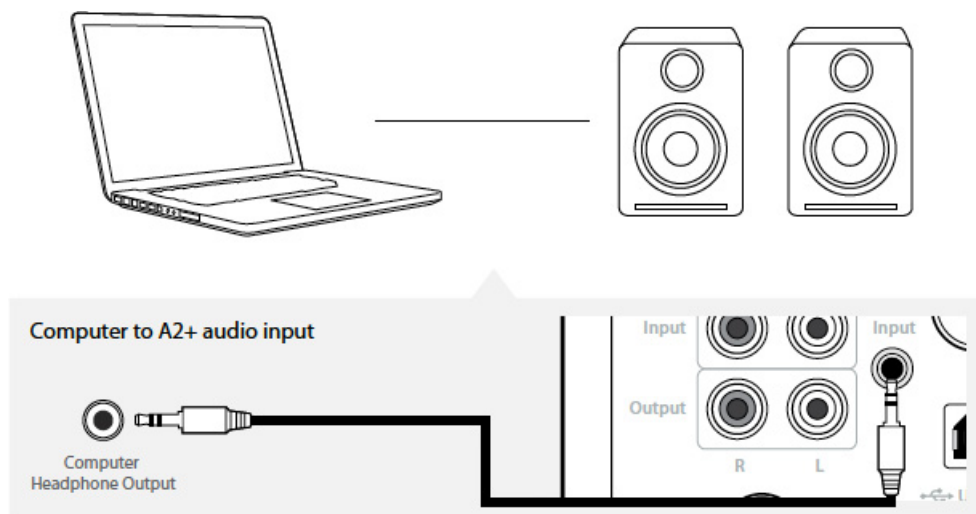
1. Connect the cable from the power supply to the left speaker rear panel.
2. Connect the power cable to the other end of the power supply.
3. Connect the power cable to an AC power outlet.

4. Verify that the LED indicator on the power supply is illuminated.

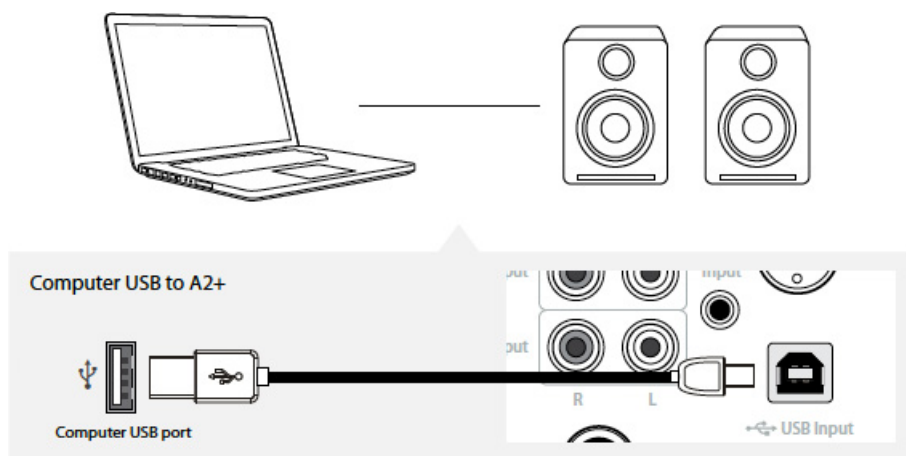
Use only the power supply provided with the speakers.

Step 3 – Connecting an Audio Source

Using the appropriate audio cable, connect the speaker inputs to your audio source (computer, iPhone, iPad, etc.). One example is shown in the diagram.



Another option for connecting a computer to A2+ is via USB audio. Using the included USB cable, connect as shown in the diagram.



For PC, the A2+ should be recognized automatically. For Mac, under System Preferences/Sound/Output, select "Audioengine 2+"



https://manuals.plus/wp-content/uploads/2021/05/A2_How_To.mp4

A2+ Classic Troubleshooting Tips

The following troubleshooting tips can help diagnose and correct most concerns with the A2+ Classic. We have attempted to make this list as comprehensive as possible, so some of these may not apply to your issue, but please go through each tip.

If the power indicator on the A2+ external power supply unit is not illuminated, try these tips:

1. Make sure the AC power cord is connected to the power supply unit and to a working AC power outlet.
2. Check that the cable at the other end of the power supply is correctly connected to the rear panel of the left speaker.

If the power supply light is on but you are experiencing an audio-related issue, try these tips:

1. Verify that the volume/power control on the rear panel is not turned all the way down or powered off (we recommend setting the volume to at least the 10 o'clock position).
2. Check that the volume level of your audio source components or devices is not set to minimum volume or powered off.
3. Check speaker wire connections from the left (powered) speaker to the right (passive) speaker. Confirm this by removing the speaker wire from on each speaker and reconnecting. Also check the speaker wire polarity by verifying that the wires are going to same terminals on both speakers.
4. Check that the cables from your audio sources to the speakers are properly connected. Confirm this by unplugging the audio cables and then reconnecting.
5. Decrease the volume of the input audio source and increase the volume of the speakers.
6. Try using different audio input sources and/or devices to see if the problem follows.
7. Try swapping your left and right speaker via the RCA left and right inputs to see if the issue remains in the same channel or follows the speaker.
8. If you are using a computer with your A2+, make sure the volume is up on your media players, internet radio, master control, device volume, etc. and the balance control is centered.
9. If your input source has its own EQ, please make sure the low end is at a moderate level, as having too much bass can cause distortion.
10. If you are using a wireless adapter, preamp, or external DAC with these speakers, remove them (temporarily) and connect the audio input source directly to the speakers.
11. Move your speakers to a different location to see if something is causing interference in the current setup. Something as simple as a wireless internet router, cordless or mobile phone, or halogen lamp near the speakers can cause interference.

A2+ troubleshooting tips – internal USB digital-to-analog converter

Try these tips if your computer is not recognizing the speaker through your computer's USB input or the sound through USB isn't functioning correctly.

If you are using a Windows computer, uninstall the USB driver from your computer. Then disconnect the USB cable to remove the A2+ from your computer and plug it back in to allow the USB driver to re-install automatically. You can find complete instructions from Microsoft on how to reinstall a plug-and-play device under Windows [here](#).

If you are using a Mac, try a NVRAM/PRAM reset. This resets the system configurations for some audio and video related items and can many times help clear up problems related to audio. See [Apple's support page](#) for information on how to do this.

Downloads

Audioengine A2+ Speaker System Manual – [Download](#)

[Manuals+](#),

- [home](#)
- [privacy](#)