

## Audioengine A2 Woofer Replacement



# Audioengine A2 Woofer Replacement Instruction Manual

[Home](#) » [audioengine](#) » Audioengine A2 Woofer Replacement Instruction Manual 

### Contents

- [1 Audioengine A2 Woofer Replacement](#)
- [2 Product Specifications](#)
- [3 Product Usage Instructions](#)
- [4 INSTALLATION AND USING INSTRUCTION](#)
- [5 Frequently Asked Questions](#)
- [6 Documents / Resources](#)
  - [6.1 References](#)



**Audioengine A2 Woofer Replacement**



## Product Specifications

- **Model:** A2 Woofer
- **Power Output:** [Insert power output here]
- **Frequency Response:** [Insert frequency response here]
- **Impedance:** [Insert impedance here]
- **Dimensions:** [Insert dimensions here]

## Product Usage Instructions

### Woofer Replacement Instructions

1. Remove the 6 Screws on the Rear of the A2.
2. Remove Amplifier(active)/Backplate(passive).
3. Disconnect the white connector from the amplifier(active) and quickly connect from the backplate(Passive).
4. Remove White cabinet foam.
5. Remove screws (2) from crossover holding crossover to cabinet.
6. Carefully remove the crossover, ensuring the tweeter and woofer quick connects are not disconnected.
7. Remove 4 Screws from the woofer bracket holding the woofer in place.
8. Remove Bracket.
9. Lift the woofer out of its mold in the cabinet front, and rotate the woofer until the cone and magnet are parallel to

the cabinet sides.

10. Disconnect wires from the woofer carefully.

## INSTALLATION AND USING INSTRUCTION

### Woofer Removal

1. Remove the 6 Screws on the Rear of the A2

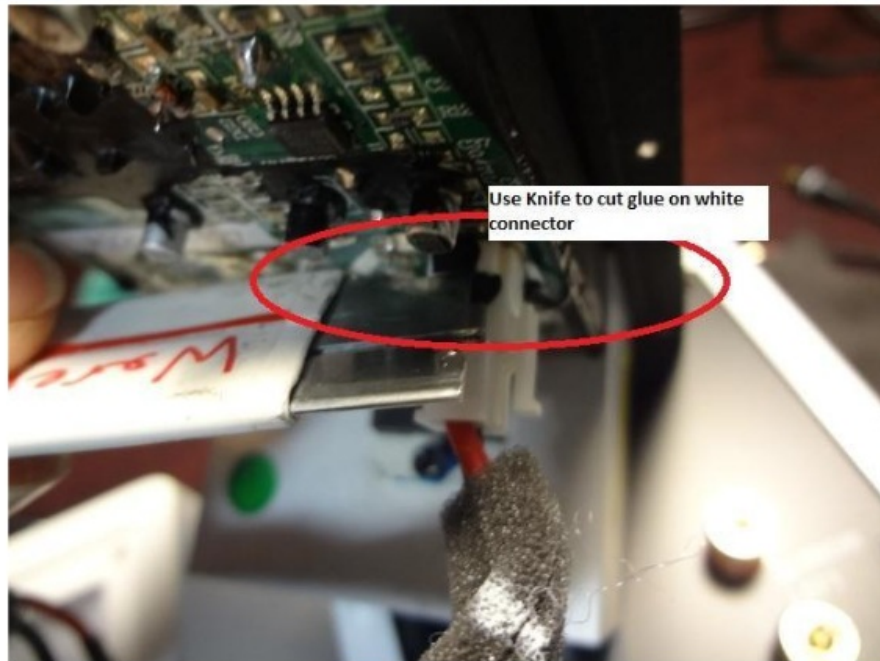
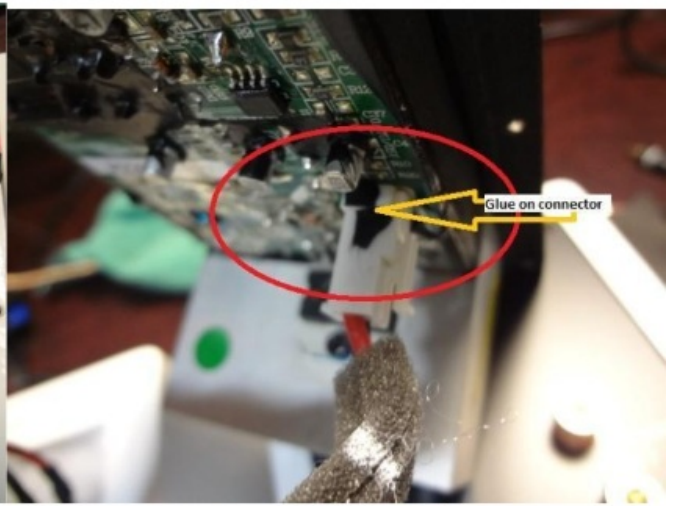
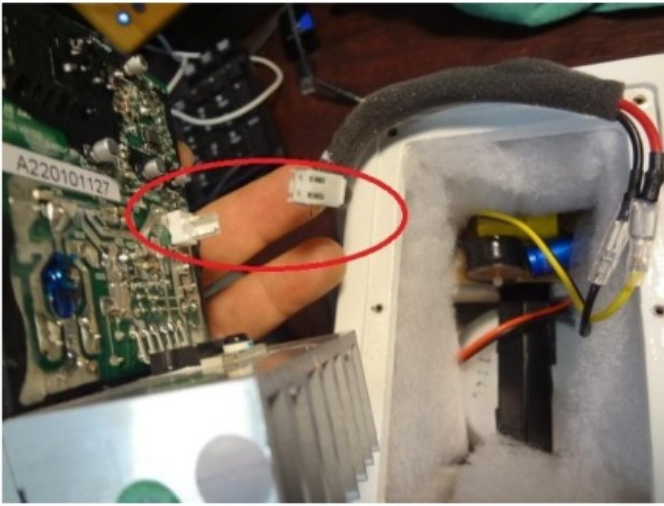


2. Remove Amplifier(active)/Backplate(passive)

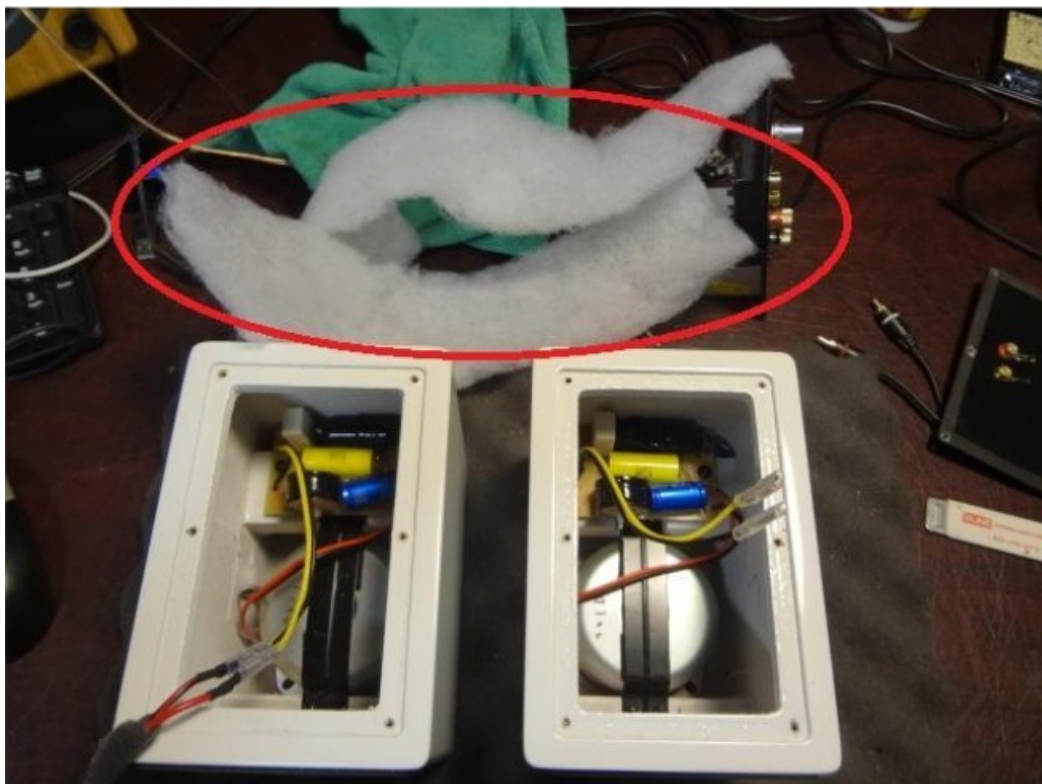
3. Disconnect the white connector from the amplifier(active), Disconnect Quick connects from the backplate(Passive). There may be some black glue on the connector, if you have trouble getting the connector off a small knife or razor may b used to cut the glue seal to the connector







4. Remove White cabinet foam



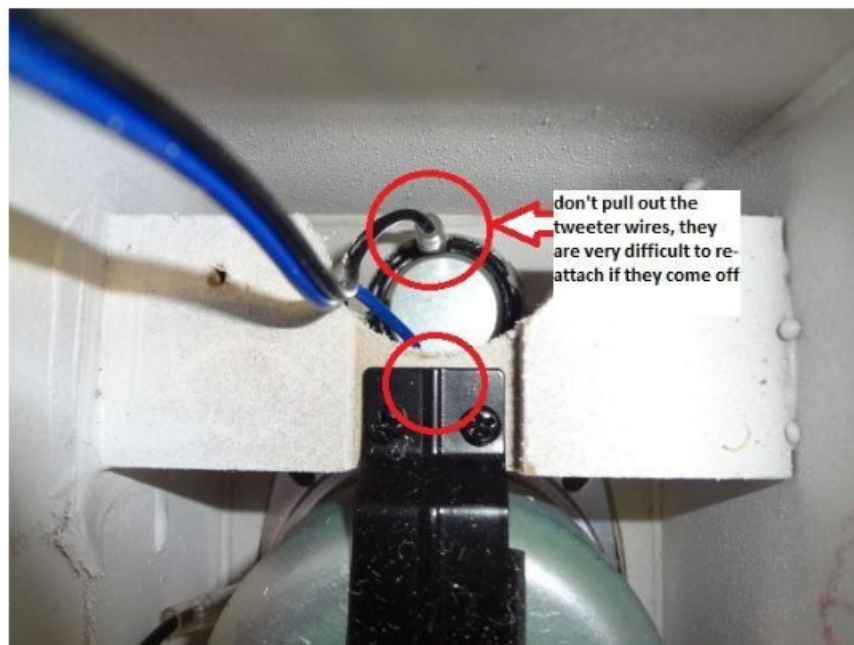
5. Remove screws (2) from crossover holding crossover to cabinet.



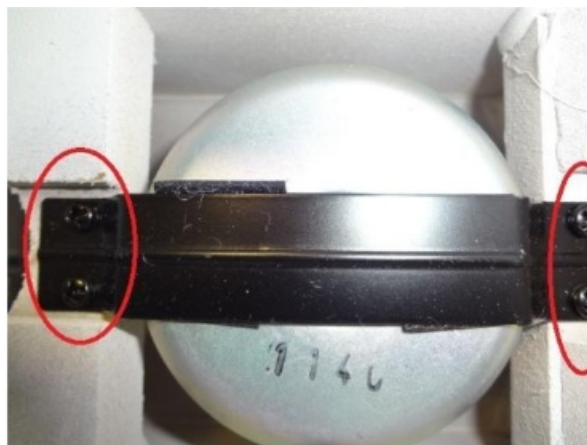
6. Carefully remove the crossover being sure not to disconnect the tweeter and woofer from their respective quick connects. Use a small cloth to drape over the cabinet then set the crossover on top of the cloth on the cabinet.







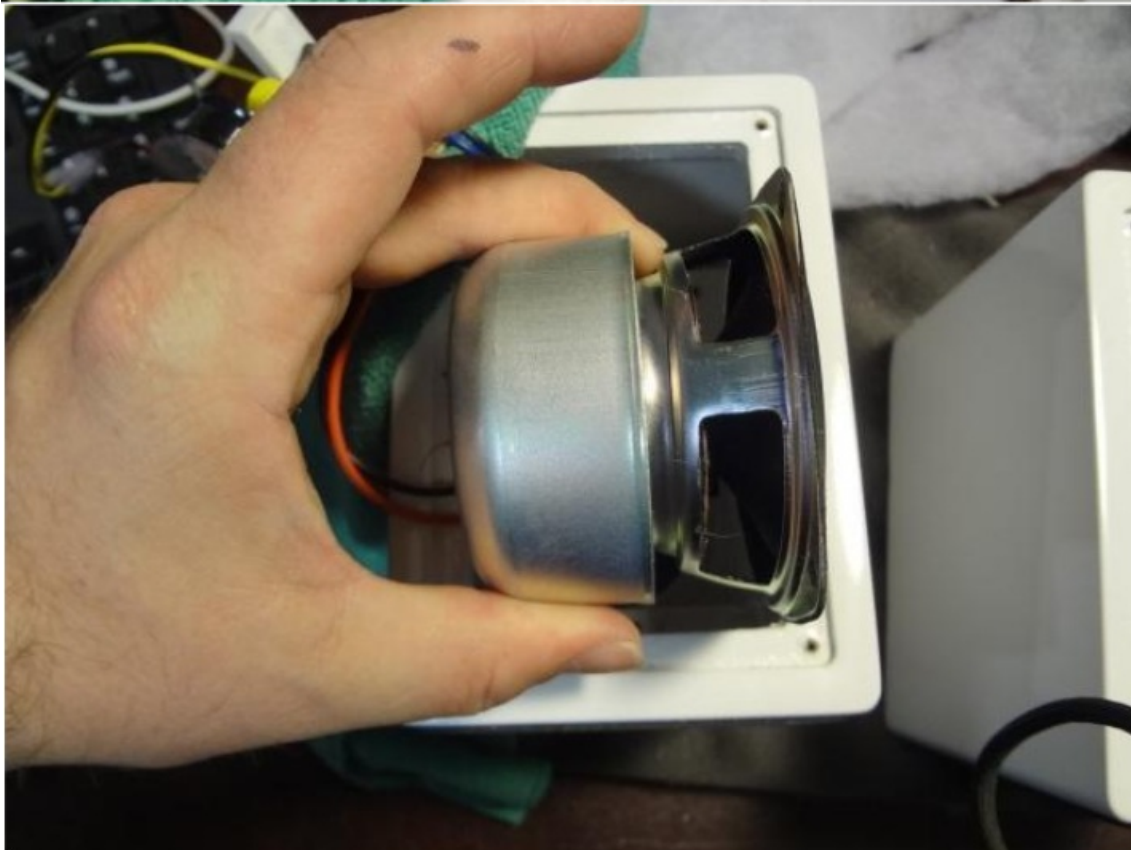
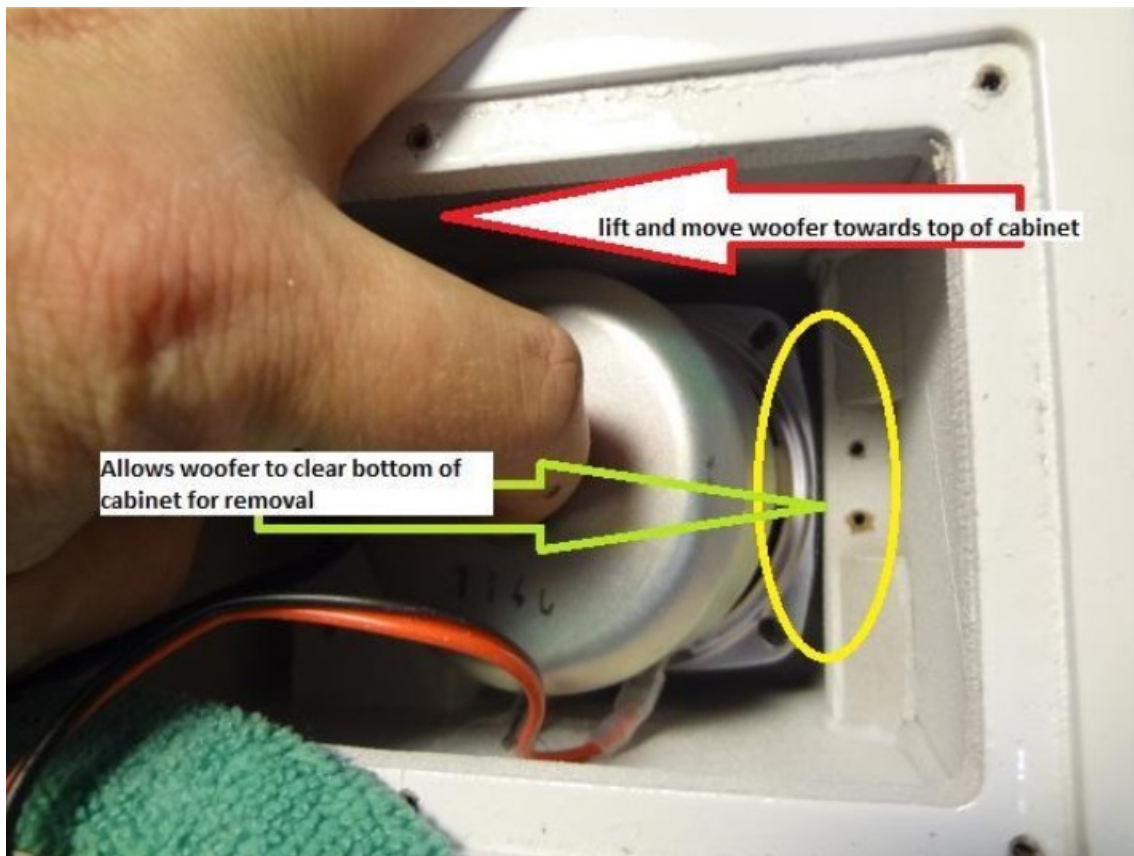
7. Remove 4 Screws from the woofer bracket that is holding the woofer in place.



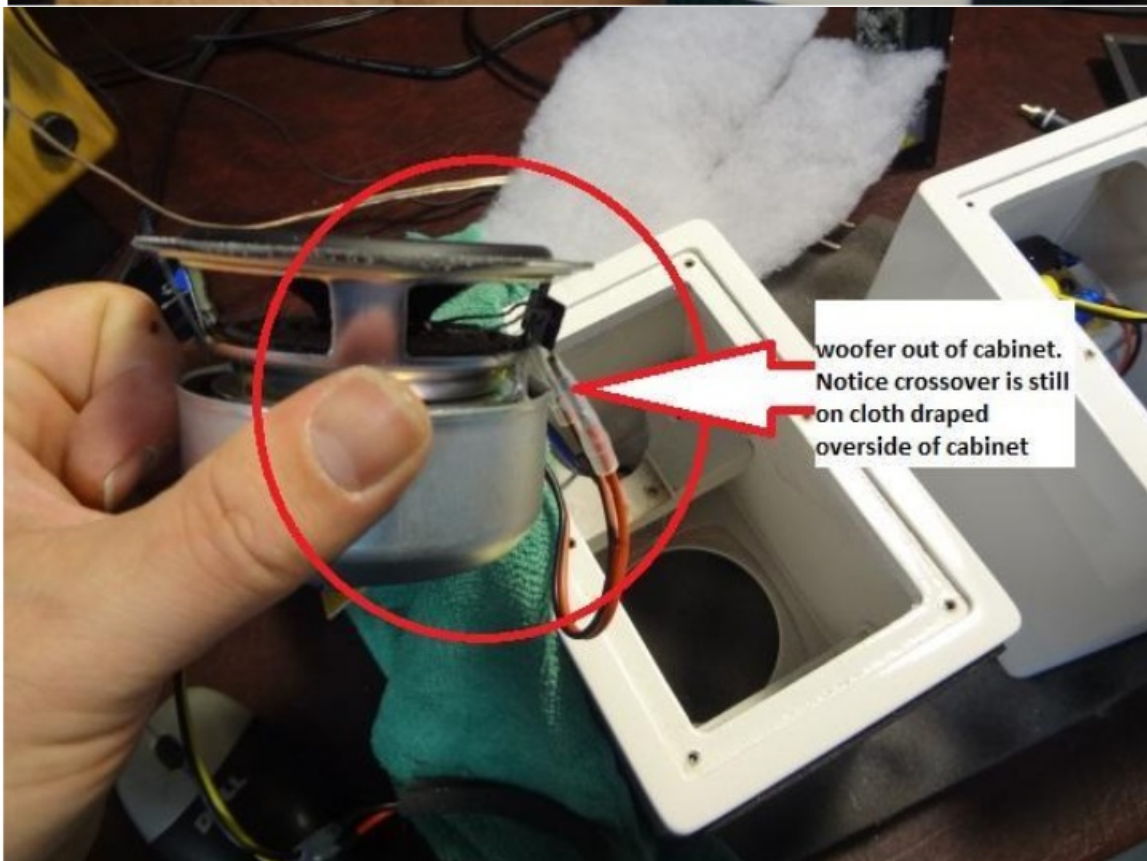
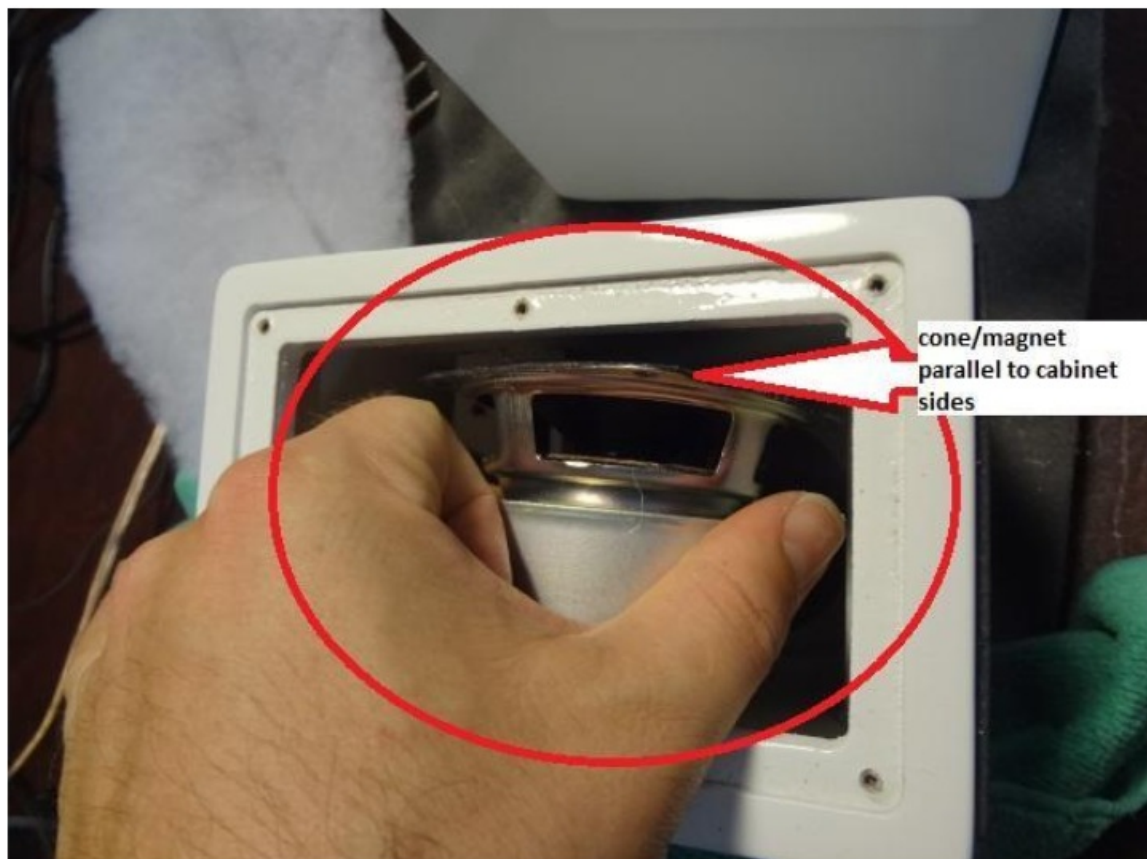
8. Remove Bracket

9. Carefully lift the woofer out of its mold in the cabinet front, moving the woofer towards the top of the cabinet exposing the bottom of the woofer.

10. Lift the bottom of the woofer out first and the woofer should clear the bottom of the cabinet, rotate the woofer until the cone and magnet are parallel to the cabinet sides, and now the woofer should be easily removed from the cabinet.



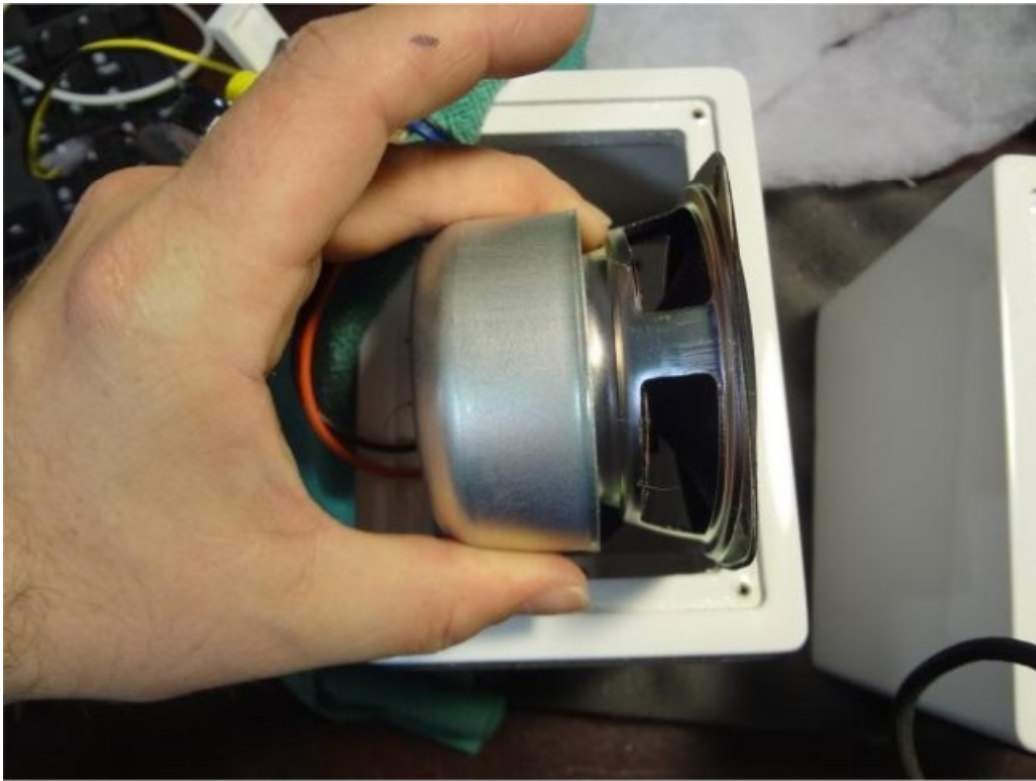




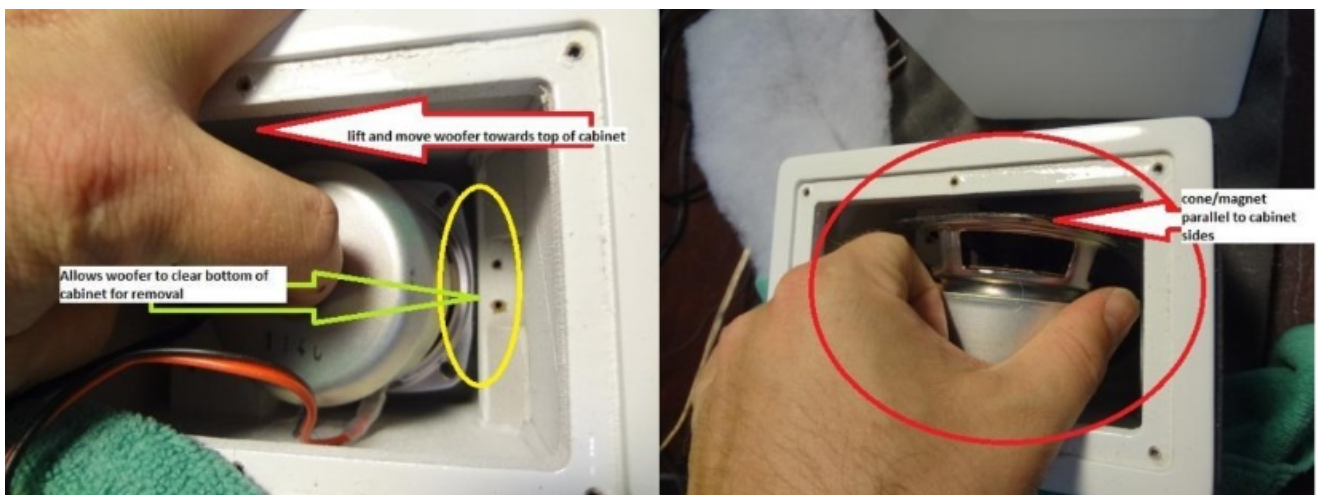
## Woofer Installation

1. Connect wires to new woofer Red(+), Black(-)
2. Turn the woofer so the wires will be on the side of the woofer after installation

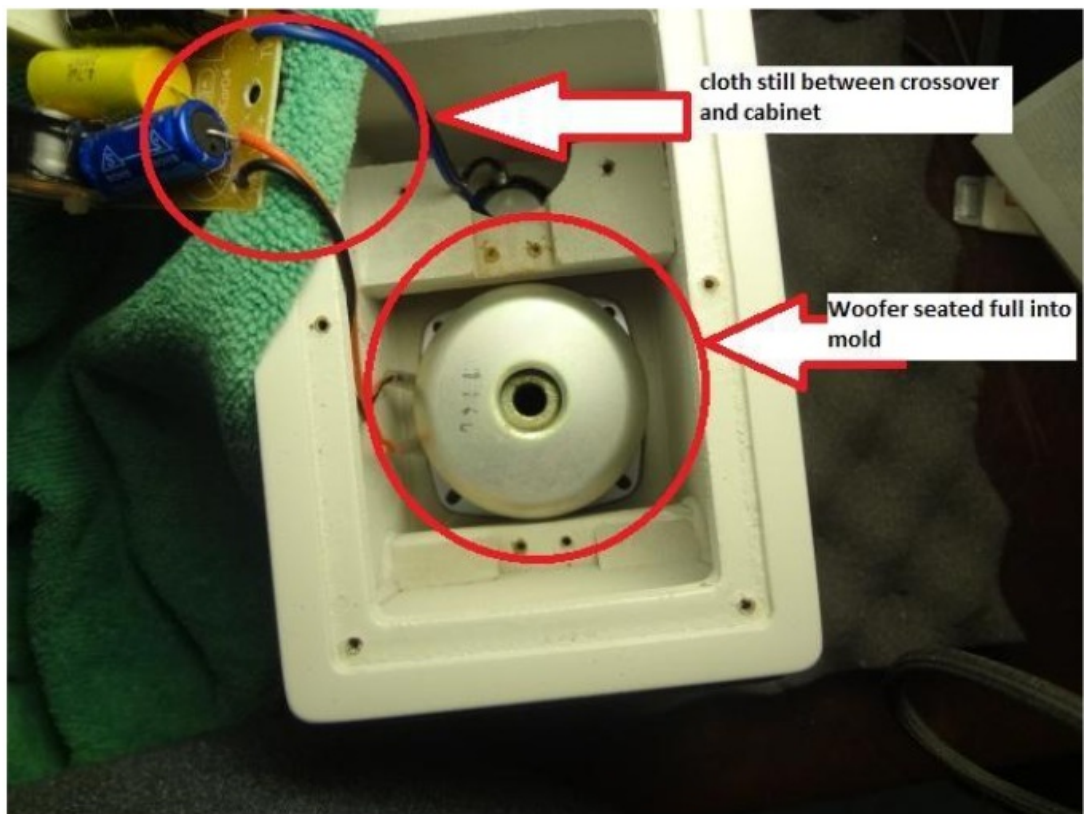




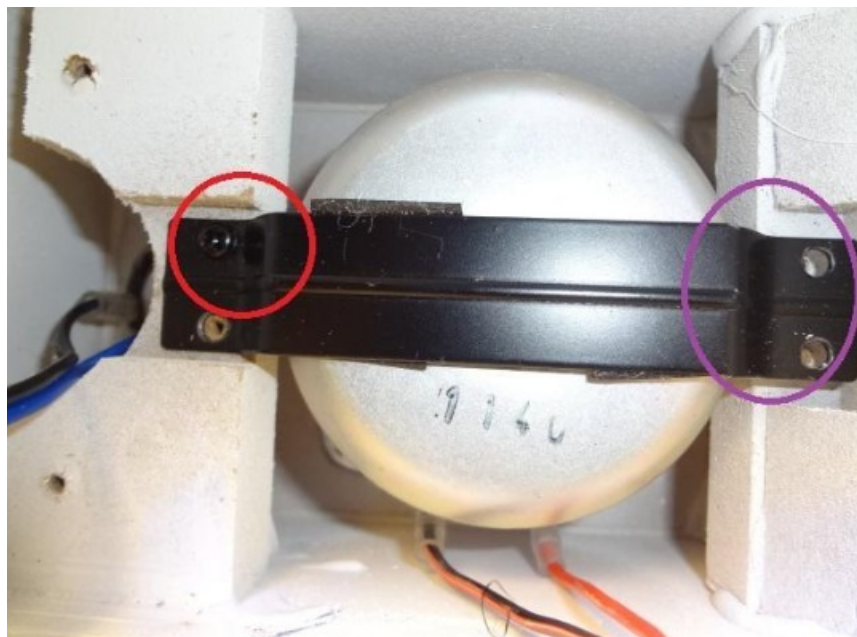
3. Slowly lower the woofer into the cabinet moving slightly towards the top of the cabinet making sure the bottom of the woofer will clear bottom of the cabinet and allow for installation to the front of the Cabinet



4. Set the woofer inside its molded area on the cabinet front, making sure the woofer is seated into the molded area. This will make the woofer-centered



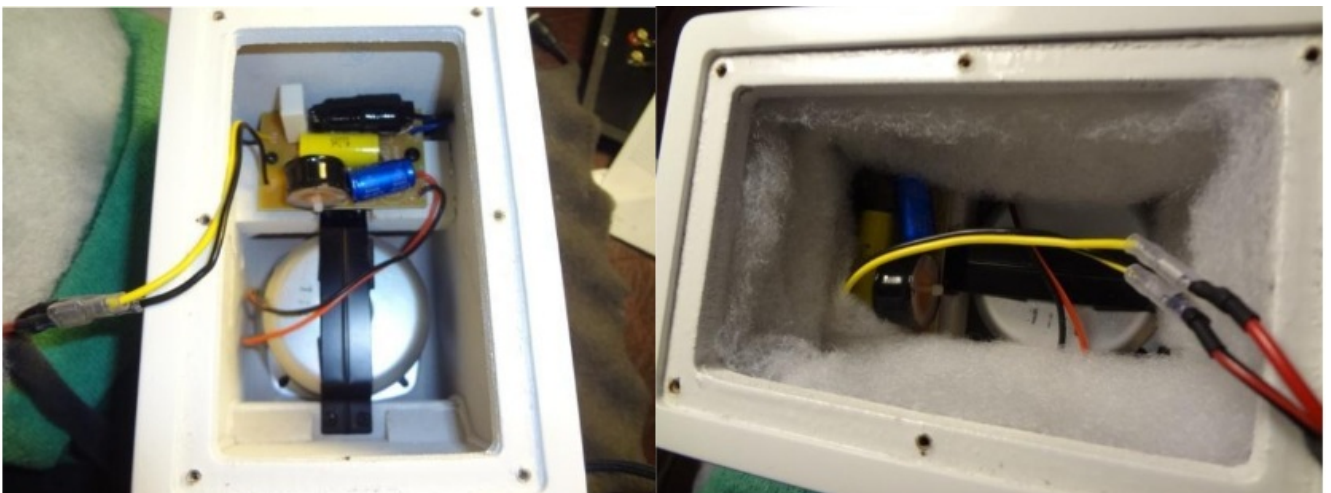
5. While holding the woofer in the mold inside the cabinet, it may be good to check the front/surround alignment before reinstalling the woofer bracket.
6. Once the woofer is seated snugly in the mold place the bracket across the woofer and screw the 4 bracket screws in 1 on one end at a time and on opposite sides from the last.







7. Next Carefully replace the crossover to its original position and add both of its screws. Be careful not to screw too tight, you may damage the crossover. Next, reinstall the white cabinet foam.



8. Finally, connect White Connector to the amplifier (Active), the Wires (Red/Black) to the Back panel and seat the amp/backplate on the back of the cabinet and install the last 6 screws






9. All Done. Ready to Rock!

## Frequently Asked Questions

- **Q: Can I use any other brand's woofer as a replacement for A2 Woofer?**
  - A: It is recommended to use the specified replacement woofer for optimal performance and compatibility.
- **Q: Is professional help required to replace the woofer?**
  - A: While it can be done following the provided instructions, seeking professional help is recommended if unsure about the process.

---

## Documents / Resources

	<p><a href="#">Audioengine A2 Woofer Replacement</a> [pdf] Instruction Manual A2 Woofer Replacement, A2, Woofer Replacement, Replacement</p>
---	--

## References

- [User Manual](#)

[Manuals+.](#) [Privacy Policy](#)

This website is an independent publication and is neither affiliated with nor endorsed by any of the trademark owners. The "Bluetooth®" word mark and logos are registered trademarks owned by Bluetooth SIG, Inc. The "Wi-Fi®" word mark and logos are registered trademarks owned by the Wi-Fi Alliance. Any use of these marks on this website does not imply any affiliation with or endorsement.