



audiocom BP-1002 Beltpacks Audicom Intercom Systems Instruction Manual

[Home](#) » [audiocom](#) » audiocom BP-1002 Beltpacks Audicom Intercom Systems Instruction Manual 



Innovative solutions for today's communications™
Operating Instructions



BP-1002/BP-2002 Beltpacks
Audicom Intercom Systems
9350-7740-000 Rev K

Contents

- 1 BP-1002 Beltpacks Audicom Intercom Systems
- 2 Introduction
 - 2.1 External Connections and Controls
- 3 Operation
 - 3.1 System Power
- 4 Operating Modes
 - 4.1 Changing Modes of Operation
 - 4.2 Internal Switches, Jumpers and Adjustments
 - 4.3 Connector Pin Configurations
 - 4.4 Specifications
 - 4.5 Optional Football Modifications
- 5 Documents / Resources
 - 5.1 References
- 6 Related Posts

BP-1002 Beltpacks Audicom Intercom Systems

Proprietary Notice

The product information and design disclosed herein were originative by and are the property of Telex Communications, Inc. Telex reserves all patent, proprietary design, manufacturing, reproduction, use and sales rights thereto, and to any article disclosed therein, except to the extent rights are expressly granted to others.

Copyright Notice

Copyright 2008 by Telex Communications, Inc. All rights reserved. Reproduction, in whole or in part, without prior written permission from Telex is prohibited.

Warranty Notice

See the enclosed warranty card for further details.

Customer Support

Technical questions should be directed to:
Customer Service Department RTS/Telex Communications, Inc.
12000 Portland Avenue South
Burnsville, MN 55337 U.S.A.
Telephone: 1-800-392-3497
Fax: 1-800-323-0498
Factory Service: 1-800-553-5992

Return Shipping Instructions

Customer Service Department
Telex Communications, Inc. (Lincoln, NE)
Telephone 1-402-467-5321
Fax: 1-402-467-3279
Factory Service: 1-800-553-5992

Please include a note in the box which supplies the company name, address, phone number, a person to contact regarding the repair, the type and quantity of equipment, a description of the problem and the serial number(s).

Shipping to the Manufacturer

All shipments of product should be made via UPS Ground, prepaid (you may request from Factory Service a different shipment method). Any shipment upgrades will be paid by the customer. The equipment should be shipped in the original packing carton. If the original carton is not available, use any suitable container that is rigid

and adequate sized. If a substitute container is used, the equipment should be wrapped in paper and surrounded with at least four(4) inches of excelsior or similar shock-absorbing material. All shipments must be sent to the following address and must include the Proof of Purchase for warranty repair. Upon completion of any repair the equipment will be returned via United Parcel Service or specified shipper, collect.

Factory Service Department

Telex Communications, Inc.
8601 East Cornhusker Hwy.
Lincoln, NE 68507 U.S.A.
Attn: Service

FCC Statement

This equipment uses, and can radiate radio frequency energy that may cause interference to radio communication if not installed in accordance with this manual. The equipment has been tested and found to comply with the limits of a Class A computing device pursuant to Subpart J, Part 15 of FCC Rules which are designed to provide reasonable protection against such interference when operated in a commercial environment. Operation of this equipment in a residential area may cause interference which the user (at his own expense) will be required to correct.



This product meets Electromagnetic Compatibility Directive 89/ 336/EEC

Introduction

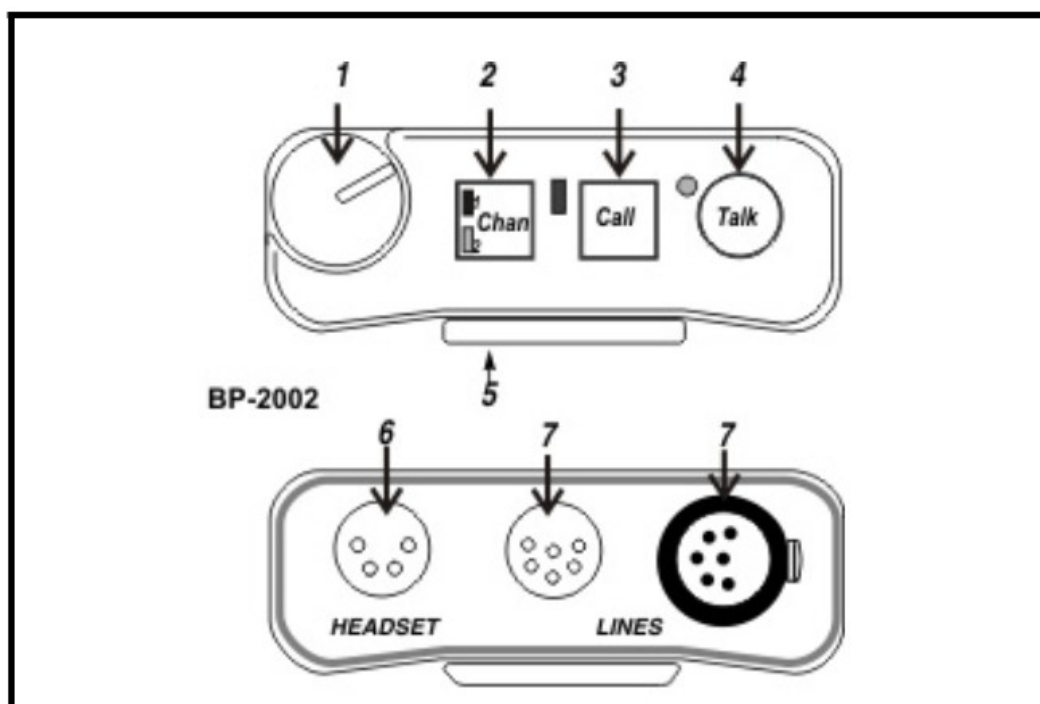
WARNING:

If you have a BP-1002/2002 with a 9030-7740-XXX circuit board, you will need to obtain Revision H of this user manual.

The Audiocom®1 BP-1002 and BP-2002 are microprocessor controlled one- and two-channel intercom beltpacks. An internal switch and jumper setting allows the units to be used with Clear-Com®2 components, if desired. Other internal switch and jumper settings allow the unit to be uniquely configured to the operator's requirements.

1. Audiocom® is a registered trademark of Telex Communications, Inc., Burnsville, MN 55337.

2. Clear-Com® is a registered trademark of Clear-Com Intercom Systems.



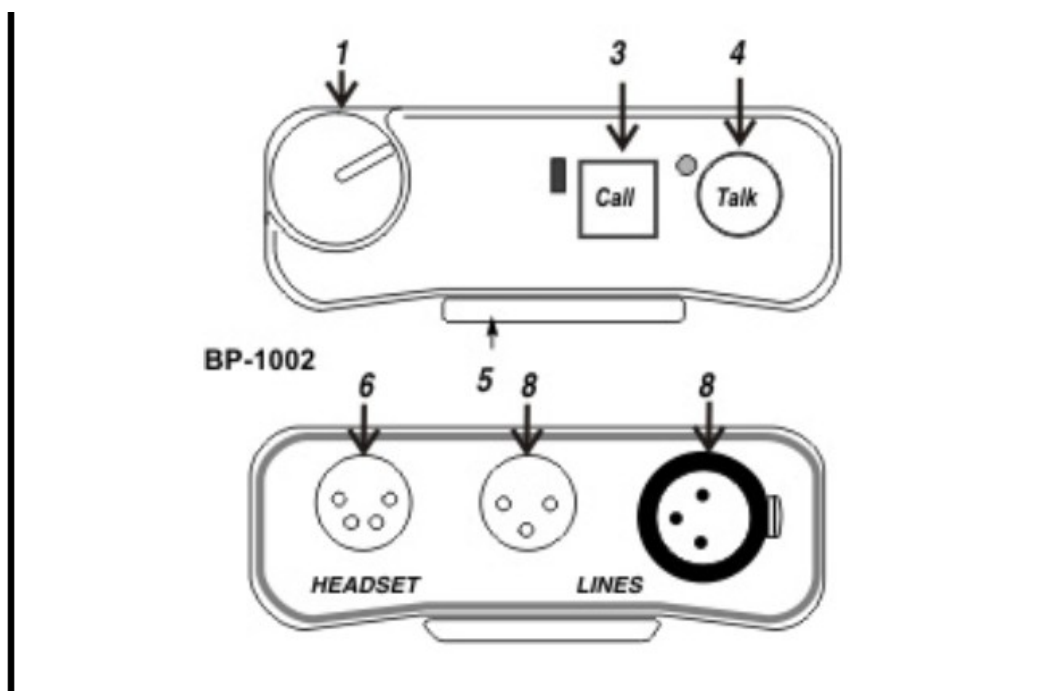


FIGURE 1. *BP-2002 & BP-1002 Connections and Controls*

External Connections and Controls

NOTE: The numbers refer to the callouts in Figure 1.

1	Volume Control –	Use this control to adjust the headset listen level.
2	Chan Button and Indicators –	The Chan button (only on the BP-2002) allows the user to select which intercom channel is active. Press the Chan button to change the channel selection. The yellow indicator next to the channel number lights to show the active channel.
3	Call Button and Indicator –	<p>The Call function allow the user to send or receive signals to other devices on the intercom channel selected. The call button operates in two ways:</p> <ul style="list-style-type: none"> • Call Receive: When there is an incoming call signal, the indicator is red. (If Audible Call Alert is enabled, incoming calls will cause beeps in the headset.) ON the BP-2002, call can be sent on the selected channel only. • Call Send: To send a call signal to all stations on a channel, press and hold the Call button until a verbal response is received. The indicator will glow red. On the BP-2002, calls can be sent on the selected channel only.
4	Talk Button and Indicator –	<p>The Talk button activates the headset microphone and operates in two ways:</p> <ul style="list-style-type: none"> • Latched Mode: Tap the button once to talk. The indicator will glow green. Tap the button again when finished with a conversation. • Momentary Mode: Press and hold the button to talk momentarily. Release the button when finished talking.
5	Sidetone Control –	When using a headset, this control adjusts your own voice level heard in the headphones. To adjust the level, tap the Talk button once to turn ON the headset microphone. Then, use a small Phillips head screwdriver to increase or decrease your voice level while talking into the microphone. (This control is accessible by removing one screw in the belt clip.)
6	Headset Connector –	This connector accepts a four-wire Telex® boom-microphone headset.
7	Intercom Channel Connectors –	<p>On the BP-2002, intercom channels are connected via a pair of 6-pin connectors (one male and one female). The male and female connectors are wired together in parallel, providing a “loop-through” at each connector pin. Use one connector to connect to the intercom channel. Use the other connector to “daisy chain” a cable to the next beltpack or other station on the channel.</p> <p>Local Power Input – Normally the BP-2002 is powered from the intercom system and will turn ON with the intercom system. The BP-2002 beltpack may also be powered from an optional power supply (21-30 VDC) connected between pin 2(+) and pin 1 (-) of the intercom channel connector.</p>
8	Intercom Channel Connectors –	On the BP-1002, the intercom channel is connected via a pair of 3-pin connectors (one male and one female). The male and female connectors are wired together in parallel, providing a “loop through” at each connector pin. Use one connector to connect to the intercom channel. Use the other connector to “daisy chain” a cable to the next beltpack or other station on the channel.

NOTE:

On the BP-2002, if no headset is connected, when the Talk button is pressed, the Talk button will have the same function as the Chan button.

Operation

System Power

The BP-1002/2002 beltpack receives power externally in one of two ways:

- The intercom channel

- The local power (pin 2) of the intercom channel connector (BP-2002 only)

Both the BP-1002 and BP-2002 will pass system power through to subsequent beltpacks that are “daisy chained” together.

Initial BP-1002/2002 Setup

The channel termination is initially set for balanced operation, which is compatible with other Audiocom® equipment. If the unit is going to be connected to Clear-Com equipment, one switch must be changed as described in the section on Clear-Com setup in this manual.

The headset microphone type is auto-sensing, which means it automatically determines if an Electret or Dynamic headset is attached to the unit.

Operating Modes

The microprocessor within the BP-1002/2002 controls four (4) modes of operation that affect the Microphone Kill and Audible Call Alert features. These modes can be seen in Table 1 on page 6.

Changing Modes of Operation

Perform the following steps to change the mode of operation.

NOTE: Both the Talk and Call indicators should be OFF and the headset should be connected.

9. Press and hold the Talk key, and then press and hold the Call key.

10. Release both keys.

The Call indicator should now glow red. (The number of beeps heard in the headset indicates the current mode of operation.)

11. Press the Call key to change to the next mode of operation.

Each press of the Call key will cause the BP-1002/2002 to change to the next mode of operation.

12. When the desired mode is reached, press the Talk key to select that mode and exit the mode changing function.

Beeps will be heard in the headset when the mode changing function is exited. The number of beeps heard indicates the selected mode of operation.

NOTE:

Each time the intercom system power is turned ON, the beltpack will reset to the default mode of operation (mode 2).

TABLE 1. Modes of Operation

Mode (beeps)	Mic Kill	Audible Call Alert
1	Disabled	Disabled
2 (default)	Enabled	Disabled
3	Disabled	Enabled
4	Enabled	Enabled

Internal Switches, Jumpers and Adjustments

There are several internal switches, jumpers, and adjustments that affect operation.

These are described below. To gain access to the switches, jumpers and adjustments, disconnect all power and line connections. Remove two screws from the top of each side and two screws from the bottom of each side. Switch, jumper and adjustment locations are shown in Figure 2.

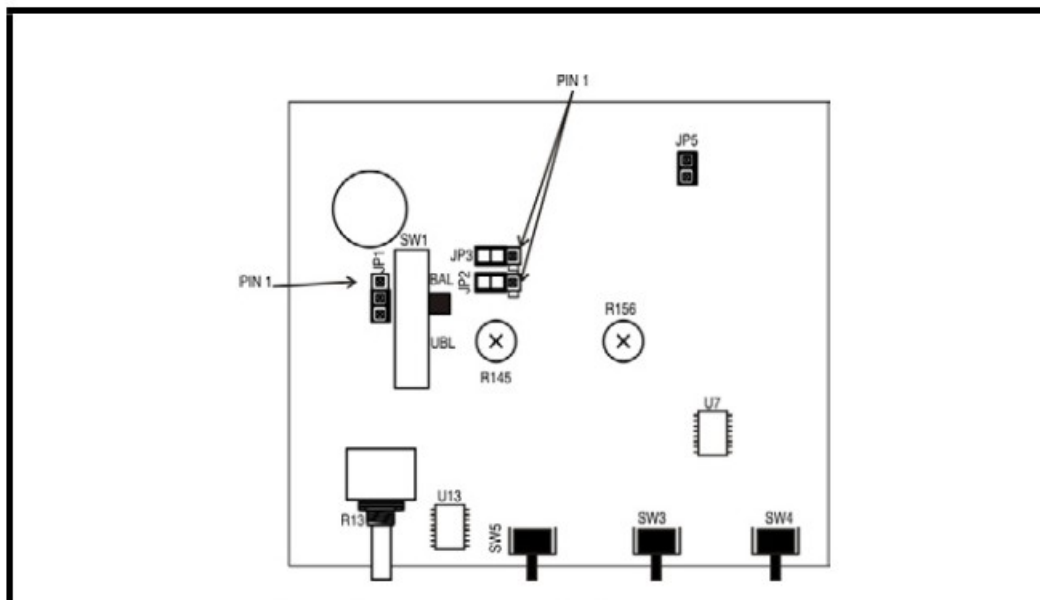


FIGURE 2. *Internal Switches, Jumpers, and Adjustments*

NOTE:

Figure 2 shows a BP-2002 with the switches and jumpers in their factory default positions. SW5 does not exist on the BP-1002 board.

The Sidetone and Mic Gain adjustment are also accessible behind the screw that holds the belt clip (callout 5 in Figure 1)

The functions of the internal switches and jumpers are described in Table 2 on page 8.

Sidetone Adjustment (R145)

The sidetone adjustment is accessible either internally (refer to Figure 3) or by removing the belt clip mounting screw (callout 5 in Figure 1 on page 2).

To adjust the level of your own voice heard in the headphones, tap the Talk button once to turn ON the headset microphone. Then, use a small Phillips head screwdriver to increase or decrease your voice level while talking into the microphone.

Mic Gain Adjustment (R156)

The Mic Gain Adjustment is accessible internally on the board (R156) (refer to Figure 3) or by removing the belt clip mounting screw (callout 5 in Figure 1 on page 2).

To adjust mic gain, do the following:

> Using a Phillips head screw driver, turn the Mic Gain pot clockwise to increase the gain (or counter-clockwise to decrease the gain).

Clear-Com Setup

Make the following switch and jumper changes when the beltpack is used with Clear-Com equipment.

BP-1002/2002

> SW1 must be placed in the UNBAL position.

TABLE 2. Internal Switches and Jumpers

Jumper/Switch Number	Jumper or Switch Function	Default Setting
JP1 and JP2	Power Select	Pins 2 & 3 are shorted
	Channel One Power: pins 2 & 3 shorted (On BP-1002, pins 2 & 3 are always shorted)	
	Channel Two Power: pins 1 & 2 are shorted	
SW1	Clear-Com/Audiocom®	BAL
	Unbalanced/Balanced Line	
JP3	Must be left on default	Pins 2 & 3 shorted
JP5	Pins 1 & 2 Shorted	Pins 1 & 2 shorted

Connector Pin Configurations

Headset Connector

Type: XLR-4M (callout in Figure 1)

Pin 1 Headset Microphone Low

Pin 2 Headset Microphone High

Pin 3 Headphone High

Pin 4 Headphone Low

Intercom Channel Connectors

BP-1002

Type: One XLR-3M and XLR-3F pair (callout 8 in Figure 1)

Audiocom® Mode (Internal switch SW1 set to BAL position)

Pin 1 Common

Pin 2 Intercom audio/call low and +24VDC input

Pin 3 Intercom audio/call high and +24VDC input

Clear-Com® Mode (Internal switch SW1 set to UNBAL position)

Pin 1 Common

Pin 2 +30VDC input

Pin 3 Intercom audio/call signal

BP-2002

Type: One XLR-6M and XLR-6F pair (callout 7 in Figure 1)

Audiocom® Mode (Internal switch SW1 set to BAL position)

Pin 1 Common

Pin 2 Local Power (21-30VDC)

Pin 3 Channel A intercom audio/call low and +24VDC input

Pin 4 Channel A intercom audio/call high and +24VDC input

Pin 5 Channel B intercom audio/call low and +24VDC input

Pin 6 Channel B intercom audio/call high and +24VDC input

Clear-Com® Mode (Internal switch SW1 set to UNBAL position)

Pin 1 Common

Pin 2 Local Power (21-30VDC)

Pin 3 Channel A +30 VDC input

Pin 4 Channel A intercom audio/call signal

Pin 5 Channel B +30VDC input

Pin 6 Channel B intercom audio/call signal

Specifications

General

Power Requirements:

Channel Supplied: 24VDC nominal, 40 to 100mA

Local Power: 24VDC nominal (21 to 30VDC), 40 to 100mA

Environmental Requirements:

Storage: -20°C to 80°C; 0% to 95% humidity, non-condensing

Operating: -15°C to 60°C; 0% to 95% humidity, non-condensing

Dimensions: 5.0" (127mm) H x 3.5" (88.9mm) W x 1.8" (45.7mm) D

Weight: 13oz. (0.4kg)

Interface Requirements

Headset:

1000-3000 Ohm electret microphone

50-200 Ohm dynamic microphone

150-600 Ohm headphones

Input Level:

4mVRMS (nominal)

Balanced Intercom Channel:

Output Level: 1 VRMS nominal

Terminating Impedance: 300 Ohm $\pm 10\%$

Bridging Impedance: greater than 10,000 Ohm

Call Signaling

Send: 20kHz $\pm 100\text{Hz}$, 500mVRMS $\pm 10\%$

Receive: 20kHz $\pm 800\text{Hz}$, 100mVRMS

Mic-Off Frequency

Detect: 24kHz $\pm 800\text{Hz}$, 100mVRMS

Noise Contribution: less than -60dBu on the line

Total Harmonic Distortion: less than 1% at channel output for normal input

Unbalanced Intercom Channel:

Output Level: 775mVRMS $\pm 10\%$

Terminating Impedance: 200 Ohm $\pm 10\%$

Bridging Impedance: greater than 10,000 Ohm

Call Signaling

Send: 12 $\pm 3\text{VDC}$ on the line

Receive: 4 -15VDC from the line

Total Harmonic Distortion: less than 1% at channel output for normal input

Headphone Amplifier

Maximum Output:

4.5 $\pm 10\%$ Vrms into 150 Ω headset

Frequency Response:

200Hz to 8kHz $\pm 2\text{dB}$

Audible Alert:

1kHz, at the headset

Total Harmonic Distortion:

Less than 1% at less than 3.5VRMS into 150 Ω headset

Sidetone:

17dB minimum range, adjustable

Optional Football Modifications

General Description

In Audiocom® Intercom Systems, the Mic-Kill feature is used to turn OFF any activated microphones on a selected channel. The Mic-Kill feature is activated when the beltpack receives a 24kHz signal from the channel. In some application the MicKill and Call Signal features are not desired and need to be disabled.

Eliminating Mic-Kill and Call Signal

CAUTION: To prevent damage to the equipment, these modifications should only be made by qualified

technicians.

If desired, the Mic-Kill and Call Signal features can be disabled in the BP-2002/1002 by removing a surface mounted capacitor from the printed circuit board.

To remove the capacitor, do the following:

1. Before making changes to the printed circuit board, disconnect all power and line connections from the beltpack.
2. Refer to Figure 3 and locate C61 on the underside of the printed circuit board.
3. Remove capacitor C61 from the printed circuit board.

Restoring Mic-Kill and Call Signal

To restore the Mic-Kill and Call Signal features, replace C61 with Telex part® number 102881-140, 1500pF, 50V capacitor.

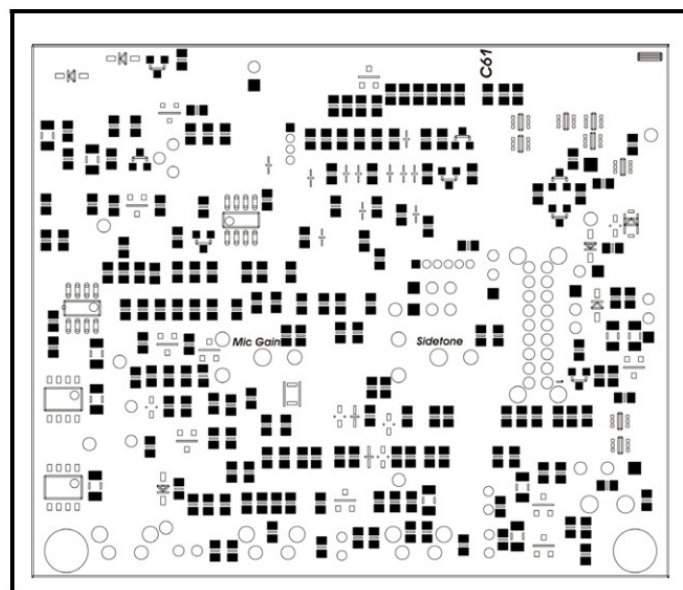



FIGURE 3. Printed Circuit Board

Notes

<https://manual-hub.com/>

Documents / Resources

	<p>audiocom BP-1002 Beltpacks Audiocom Intercom Systems [pdf] Instruction Manual BP-1002, BP-2002, BP-1002 Beltpacks Audiocom Intercom Systems, Beltpacks Audiocom Intercom Systems, Audiocom Intercom Systems, Intercom Systems</p>
---	--

References

- ^{MH} [Search - Manual-Hub.com](#)

Manuals+.