



## AudioCodes C470HD Zoom Android IP Phone User Guide

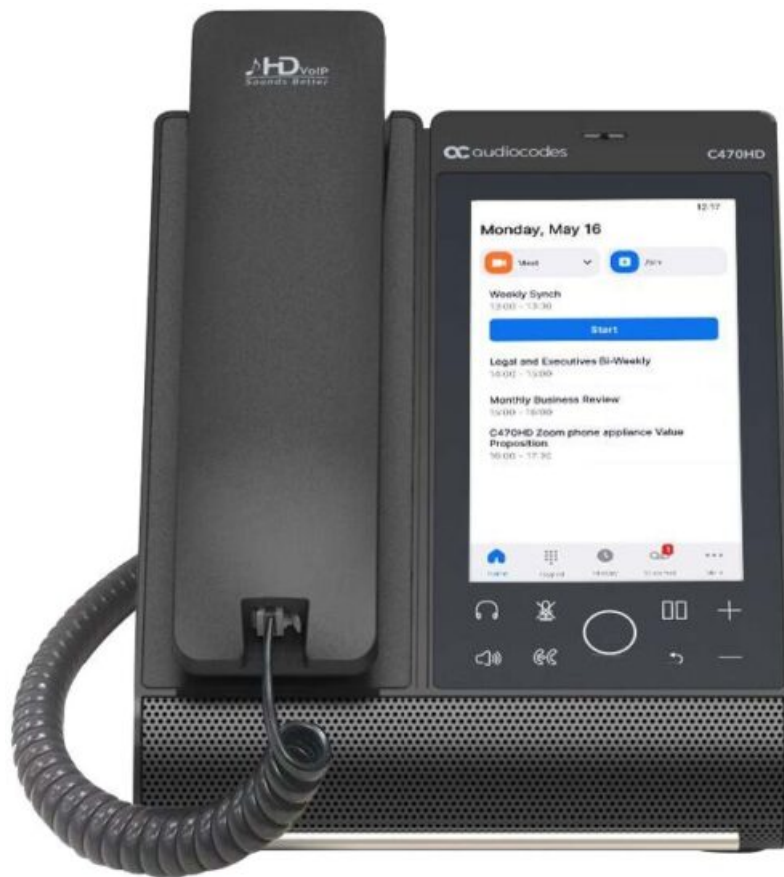
[Home](#) » [AudioCodes](#) » AudioCodes C470HD Zoom Android IP Phone User Guide 



### Contents

- 1 AudioCodes C470HD Zoom Android IP Phone User Guide
- 2 1. Before Installing
- 3 2. Physical Description
- 4 3. Cabling the Phone
- 5 4. Signing in
- 6 5. Zoom Phone Appliances
- 7 6. Connecting to Wi-Fi
- 8 7. Configuring Bluetooth
- 9 Documents / Resources
  - 9.1 References
- 10 Related Posts

**AudioCodes C470HD Zoom Android IP Phone User Guide**



## 1. Before Installing

Congratulations on purchasing your AudioCodes C470HD Zoom Android IP Phone! Before installing your phone, make sure the following items are included in the shipped box:

- C470HD IP Phone
- AC power adapter (optional)
- Cat 5e Ethernet cable
- Handset
- Handset cord

## 2. Physical Description



### 3. Cabling the Phone



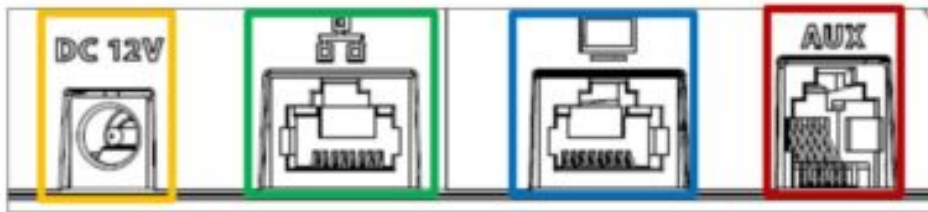
**Warning:** Prior to connecting power, refer to the Compliance and Regulatory Information document at <https://www.audiocodes.com/library/technical-documents>.

#### To cable the phone:

1. [See figure below] Connect one end of the coiled handset cord to the phone's side and the other to the handset.



2. Optionally connect a headset to either
- the **RJ-9 port** on the phone's rear (see figure below) or
  - the USB port on the phone's side (see figure above)

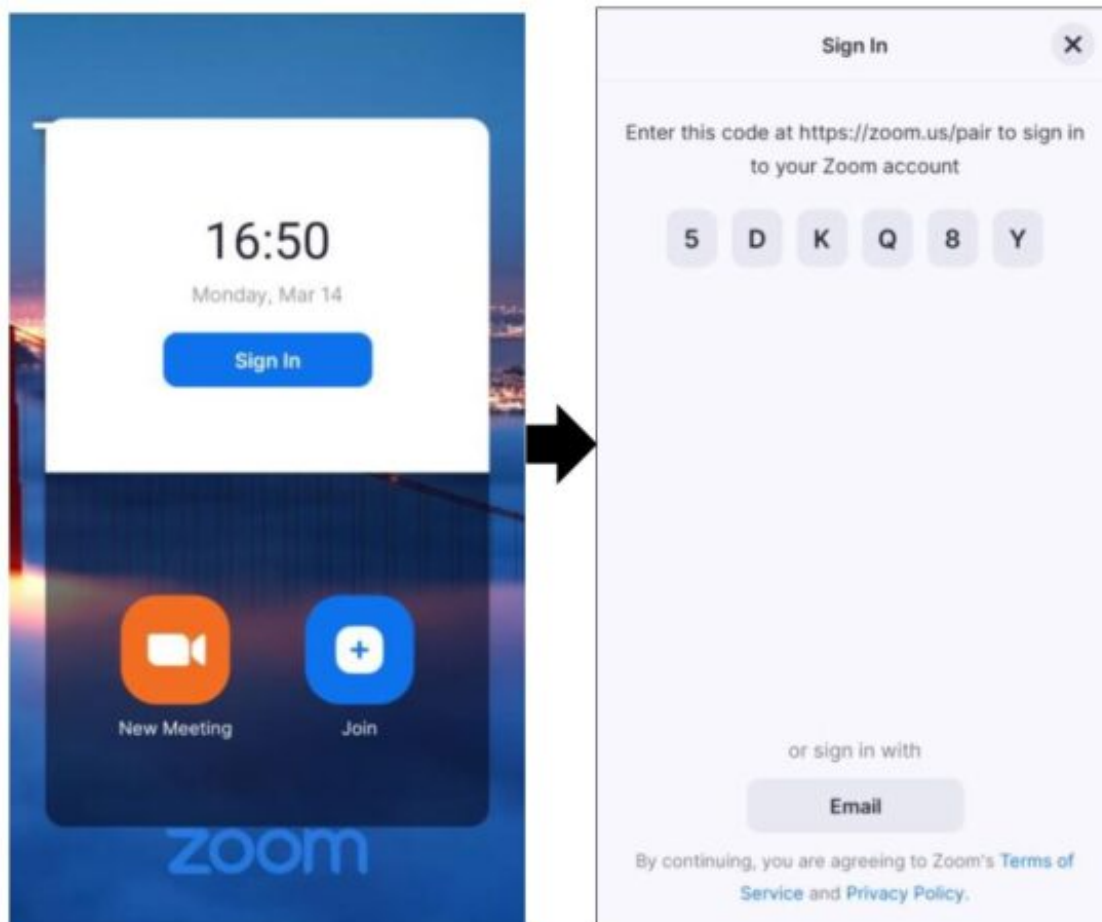


3. Connect the DC connector of the AC power adapter to the phone's **DC 12V power socket** and connect the AC power plug directly to the electrical wall outlet (see figure above). When the phone powers up, all the LEDs momentarily light up.
4. Connect the **RJ-45 LAN port** to your LAN network (LAN port or LAN switch/router) with a CAT5 / 5e Ethernet cable.
5. Optionally connect the **RJ-45 PC port** to a computer with a CAT5 / 5e straight-through Ethernet cable.

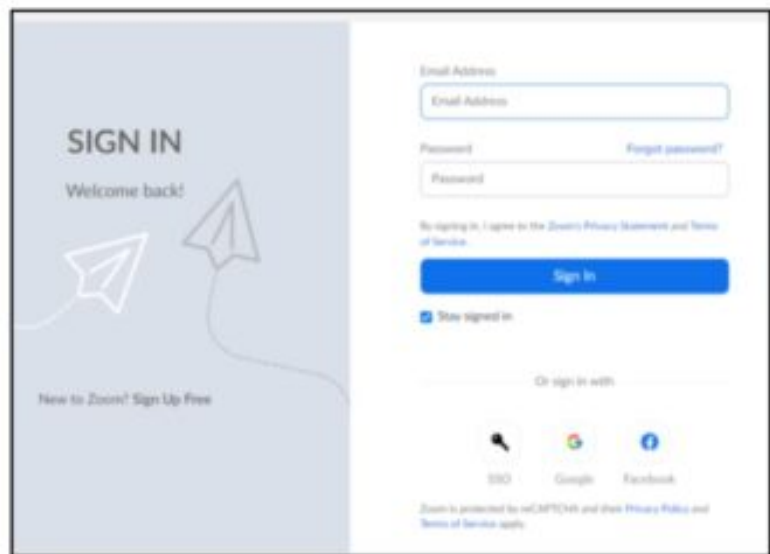
## 4. Signing in

### To sign in:

1. In the Zoom Sign-In screen, touch the Sign In button.



- To sign in from another device (Two Factor Authentication), navigate in your browser on the other device to <https://zoom.us/pair> and then in the web page that opens, enter the code shown above.
- To sign in via email, click Email and then in the 'Sign In' screen displayed, enter your email (e.g., john.brown@company.com) and your password provided to you by your IT manager.



- **To sign out:** In the phone's home screen, touch your picture, touch Settings and then Sign Out.

## 5. Zoom Phone Appliances

See here for details about Zoom Phone Appliances, including Getting started with Zoom Device Management (ZDM).

## 6. Connecting to Wi-Fi



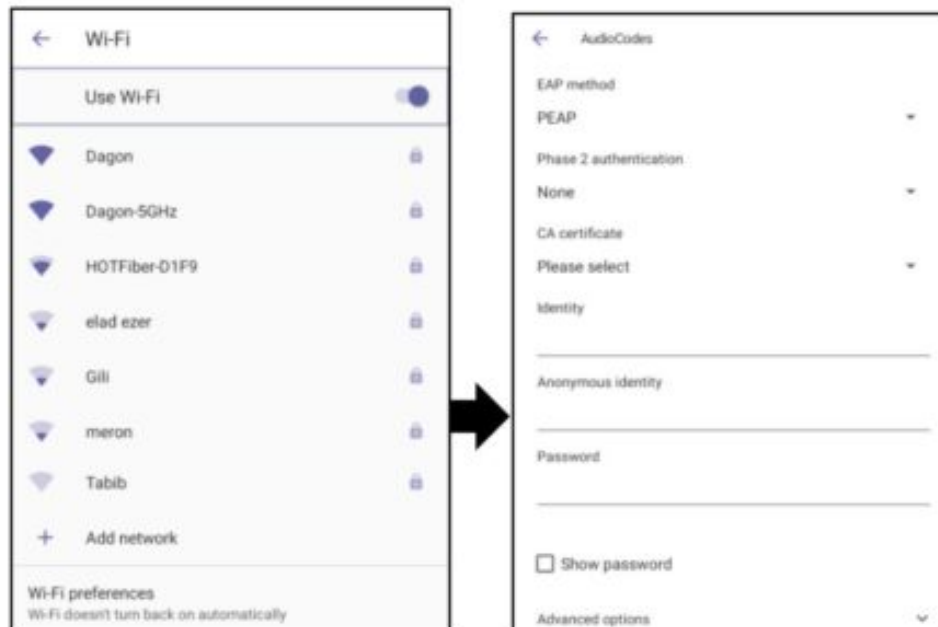
Note: Contact your local AudioCodes representative for more information about regional availability of Wi-Fi. Wi-Fi requires a specific CPN with a 'DBW' suffix.

**To connect to Wi-Fi:**

1. Open the Wi-Fi screen (in the phone's home screen, touch your picture > **Settings** > **Device Settings** > **Wi-Fi**).



2. Slide the 'Use Wi-Fi' on/off switch to the on position (by default it's off).



3. From the available Wi-Fi Access Points displayed (see figure above left), touch the network you want, enter the network credentials and then touch **Connect**.



4. When connected to the Access Point, the Wi-Fi screen displays 'Connected' under it.



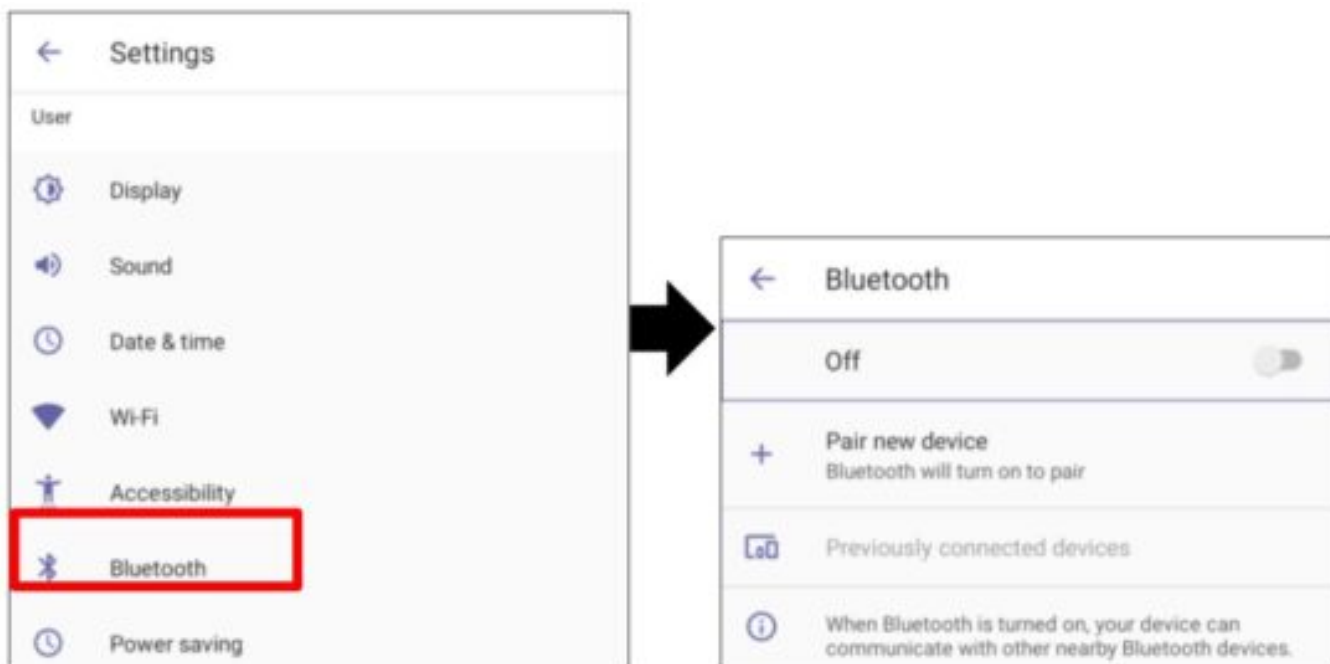
## 7. Configuring Bluetooth



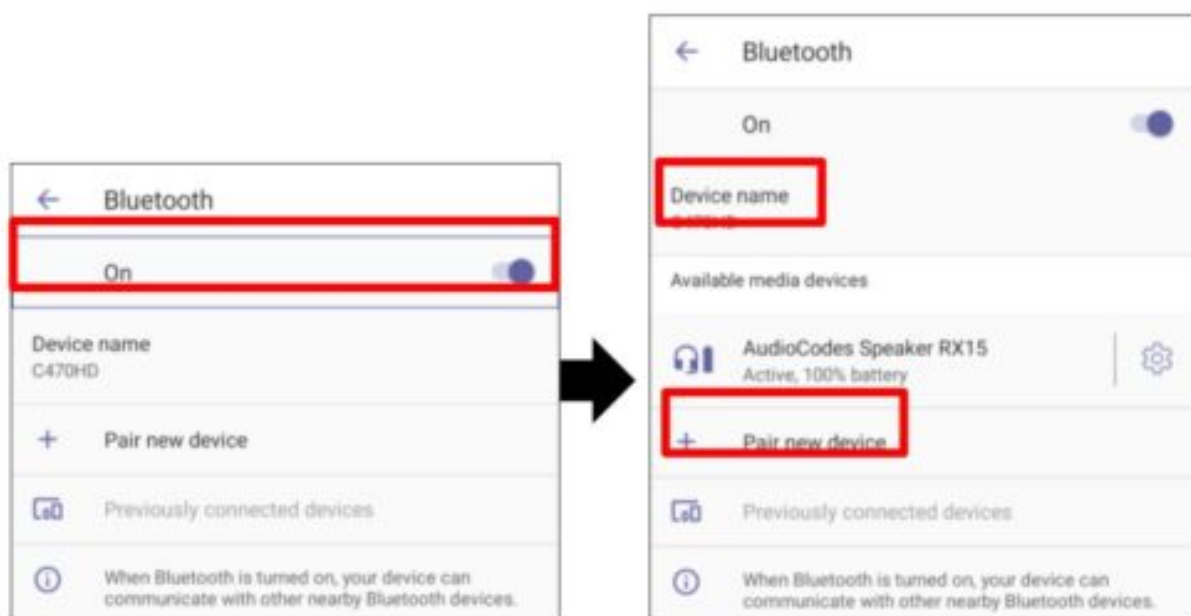
**Note:** You can use Bluetooth to connect the phone to a wireless headset or speaker.


**To configure Bluetooth:**

1. Open the Bluetooth screen (in the phone's home screen touch your picture > Settings > Device Settings > Bluetooth).



2. Touch Off (by default the feature is switched off).



3. Touch + Pair new device and under 'Available media devices', touch the device to pair with.
4. To unpair a device, open the Bluetooth screen (Settings > Bluetooth) and touch  adjacent to the device.
5. In the 'Device details' screen, touch FORGET.
6. Touch FORGET DEVICE; the C470HD is no longer paired with the Bluetooth device.



**FCC WARNING** Prior to operating this device, refer to the device's Regulatory Information and FCC warnings.

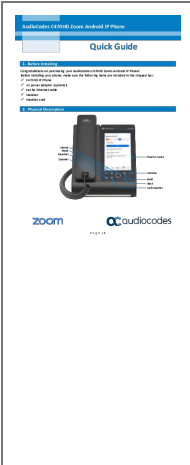


Notice Information Information contained in this document is believed to be accurate and reliable at the time of printing. However, due to ongoing product improvements and revisions, AudioCodes cannot guarantee accuracy of printed material after the Date Published nor can it accept responsibility for errors or omissions. Updates to this document can be downloaded from <https://www.audiocodes.com/library/technical-documents>. This document is subject to change without notice. Date Published: Aug-10-2022 Document #: LTRT-13378



Read More About This Manual & Download PDF:

Documents / Resources

|  |   |
|--|---|
|  | <p><a href="#">AudioCodes C470HD Zoom Android IP Phone [pdf] User Guide</a><br/>C470HD Zoom Android IP Phone, C470HD, Zoom Android IP Phone, Android IP Phone, IP Phone</p> |
|--|---|

References

- [CC Technical Documents](#)
- [CC Technical Documents](#)
- [Z Sign In - Zoom](#)