



# audio-technica WLM 20 Pro Digital Wireless System User Manual

[Home](#) » [Audio-Technica](#) » audio-technica WLM 20 Pro Digital Wireless System User Manual

Contents

1 audio-technica WLM 20 Pro Digital Wireless System

2 Usage environments

3 Launching Wireless Manager

4 Adding devices

5 Tools menu

6 Tab menus

7 Documents / Resources

7.1 References

8 Related Posts



## audio-technica WLM 20 Pro Digital Wireless System



## Specifications

- Product: Wireless Manager (System 20 PRO)
- Language: English

## Usage Instructions

### Launching Wireless Manager

Launch the Wireless Manager on your computer. The Device List screen will be displayed.

### Adding Devices

#### When offline

1. Click Edit -> Device -> Add or click the + button to access the Add Device screen.
2. Select the 2.4GHz tab, choose the device, and click Add to add it to the Device List.

#### When online

1. The Unsynced Devices screen will show online devices not synced with connected devices. Select a connected device and drag it to the Device List to sync.

## FAQ

### Q: Can I configure settings offline with Wireless Manager?

A: Yes, you can create new projects, configure devices, and save project data to your computer offline. The data can be synced with a connected receiver when online.

Wireless Manager (System 20 PRO)

Wireless Manager (for System 20 PRO)

## User Manual

### About this user manual

This user manual describes Wireless Manager functions specifically for "System 20 PRO".

For basic installation instructions and tool usage information, see the Wireless Manager user manual.

## Usage environments

### Offline environment

Communication between the receiver and software is not possible when offline. However, in an offline environment, new projects can be created, devices and parameters configured, and project data saved to your computer. Once online, the created data can be transferred to a connected receiver and synchronized for use. This enables users to configure settings in advance, even without the equipment on hand.

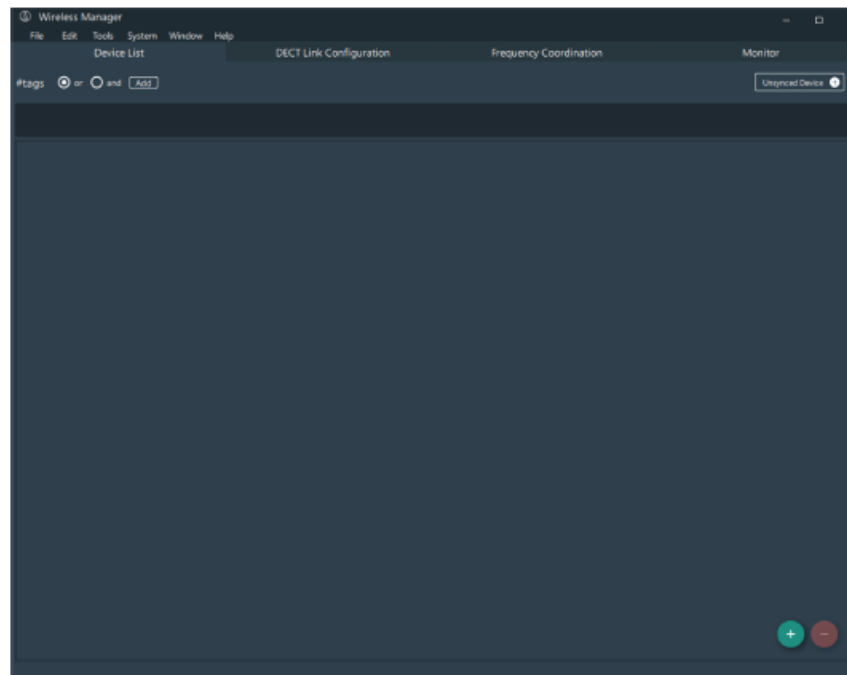
### Online environment

Communication between the receiver and software is possible when online. Device parameters can be edited in real time by syncing with the receiver in an online environment.

## Launching Wireless Manager

1. Launch the Wireless Manager on your computer.

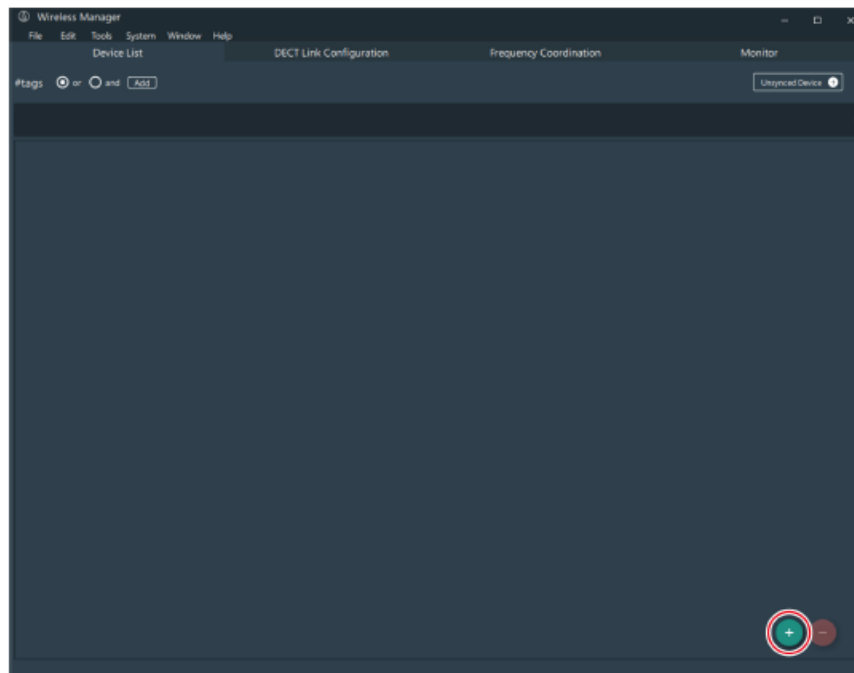
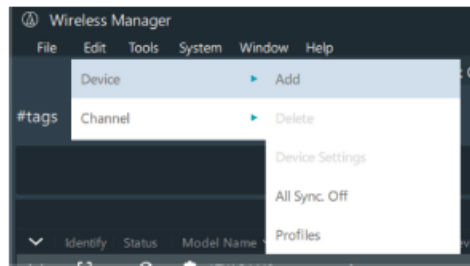
The Device List screen is displayed.



## Adding devices

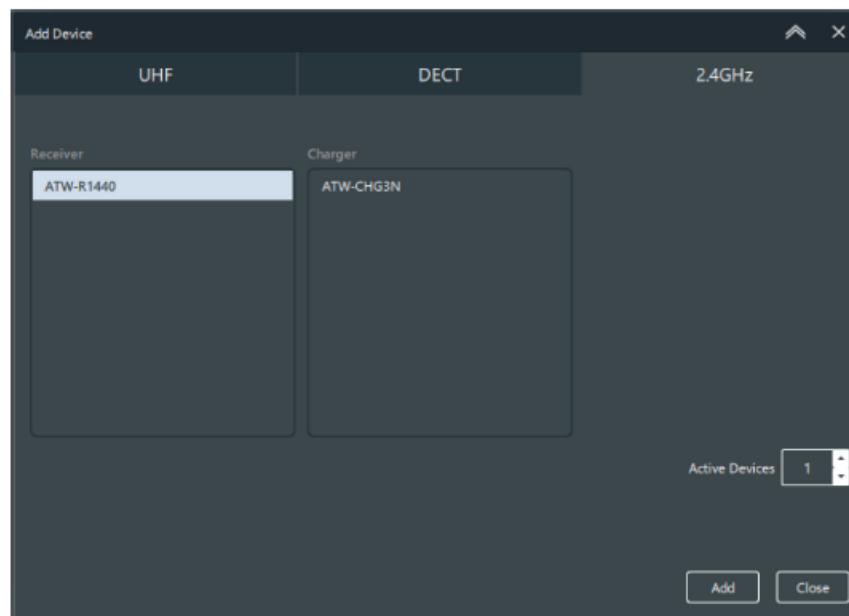
### When offline

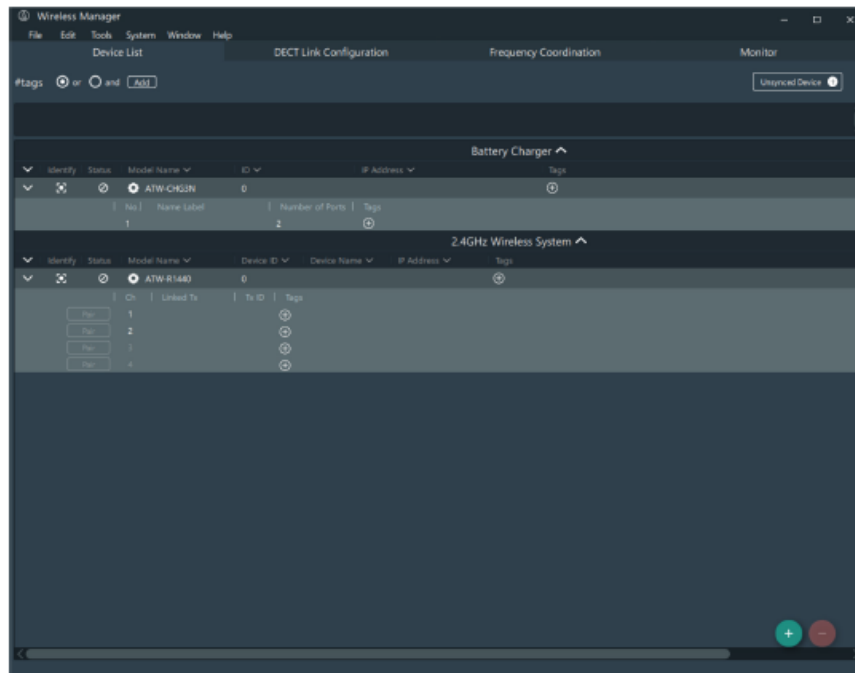
1. Click "Edit" -> "Device" -> "Add" or click the "+" button.



>> The Add Device screen is displayed.

2. First, select the “2.4GHz” tab and then select the receiver or charger device. Then click “Add”.



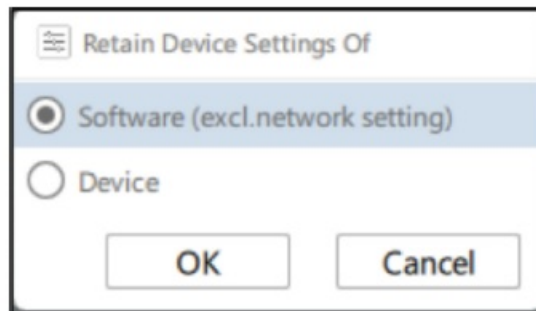


#### Additional information

- Devices must be synced when online.

### Device syncing

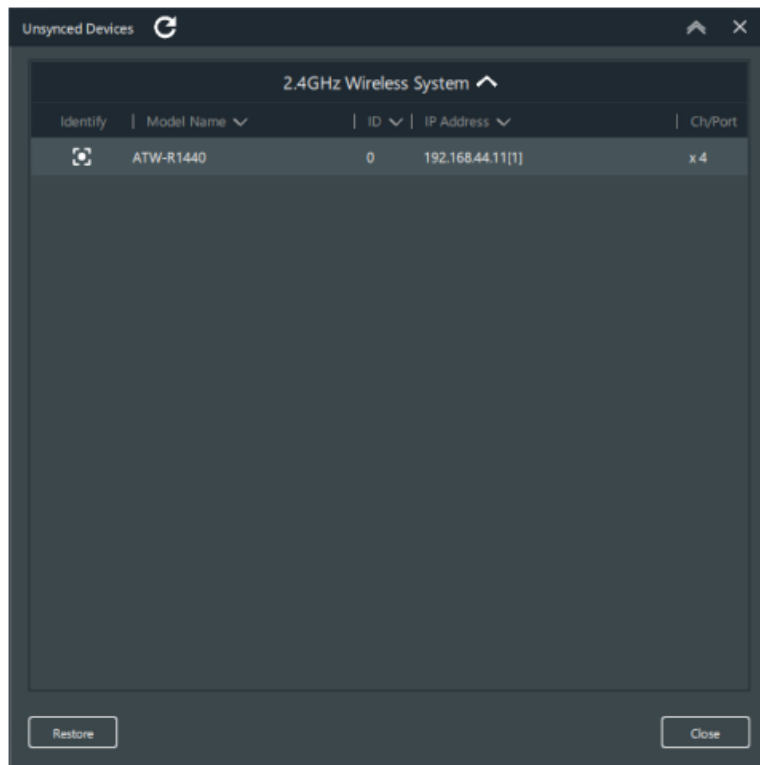
A screen is displayed prompting you to select which syncing method to use when syncing devices after settings have been configured offline. Make a selection and press “OK”.



Syncing method	Settings
Software (excl. network settings)	Settings for device lists created in advance are retained. However, network settings are not applied. To change network settings, you have to do so from the Device Settings screen.
Connected device	The settings of an online connected device will be applied.

### When online

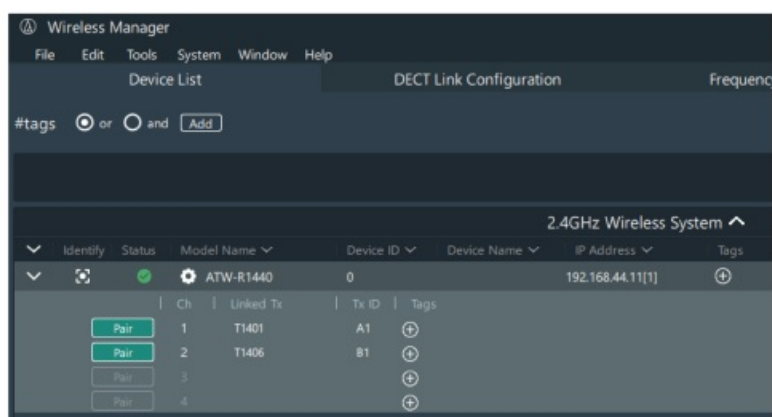
The “Unsynced Devices” screen is displayed when a device is detected while online. The screen shows all online devices that are not synched with connected devices in the Device List.



1. Select a connected device from the list and drag it to the “Device List”.



The device is added and synched.

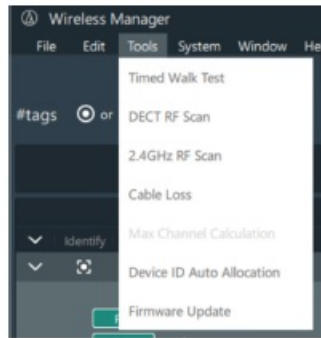


### Note

If operating the receiver unit, it cannot be added to the Device List.

### Tools menu

See the following table for functions in the Tools menu that are available for System 20 PRO.

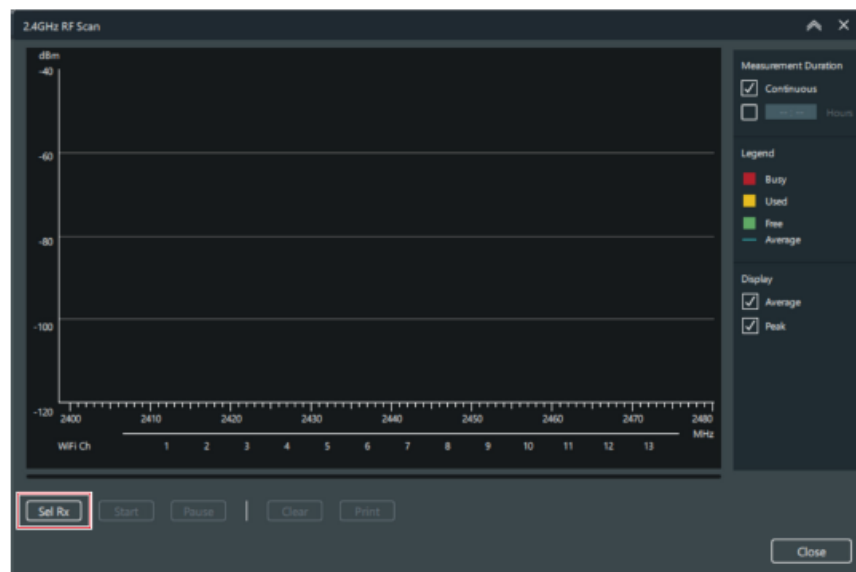


Tools menu function	Availability
Timed Walk Test	Available
DECT RF Scan	Function for other models
2.4GHz RF Scan	Available
Cable Loss	Function for other models
Max Channel Calculation	Function for other models
Device ID Auto Allocation	Available
Firmware Update	Available

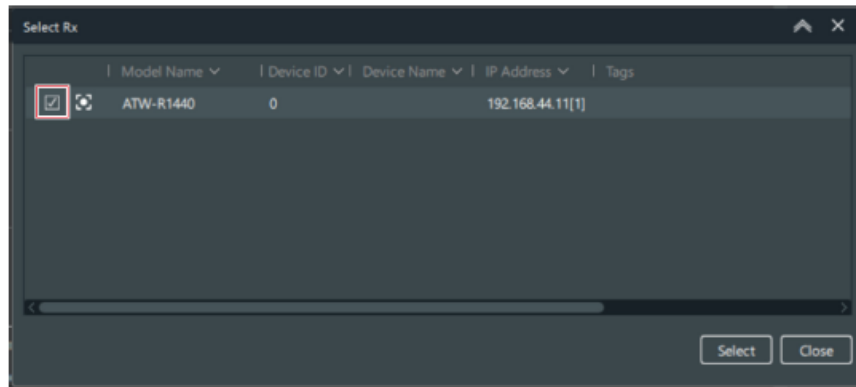
### 2.4GHz RF Scan

2.4GHz RF Scan scans the reception conditions around the selected device. Once known, reception conditions can be used in installing the receiver unit.

1. On the menu, click “Tools” -> “2.4GHz RF Scan”.
2. Click “Sel RX”.



3. Select the device to use in the 2.4GHz RF scan.



4. Click "Select".
5. Set the "Time".
  - If you do not want to set a time duration for the scan, select the "Continuous" checkbox.
  - If you will want to set a time duration for the scan, select the "Hours" checkbox and enter the time. You can set a time of up to 99 hours.



6. Click "Start" once all the settings are complete.



>> The 2.4GHz RF scan starts.

## Firmware update

Use this procedure to update the firmware of the receiver, transmitter, and charging station to the latest version.



1. On the menu, click “Tools” -> “Firmware Update”.

The Wireless Firmware Update Tool will launch.

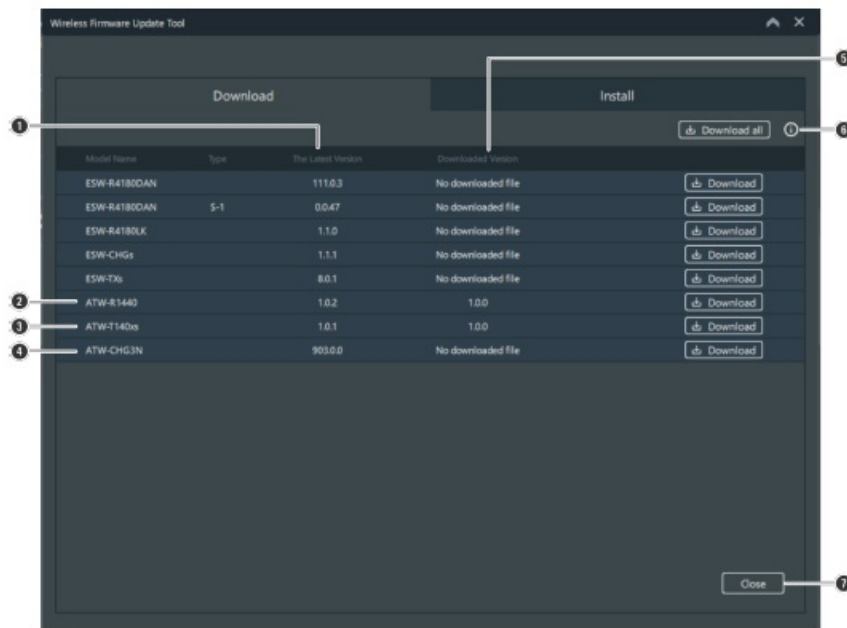
Note • An internet connection is necessary to download the firmware.

## Downloading the firmware

Find and download available firmware updates for each device.

1. Current download statuses are displayed.

- Click “Download” or “Install” to switch between the two tabs.
- The latest firmware version for each device is displayed.



- Displays the latest firmware version.
- ② This is firmware for receivers.
- ③ This is common firmware for transmitters.
- ④ This is firmware for charging stations.
- ⑤ Displays previously downloaded firmware versions.
- ⑥ Click the icon to connect to our company website and display information about the latest firmware.
- ⑦ Click the button to close the “Wireless Firmware Update Tool” screen.

2. Click “Download all” or “Download”.

- These can be clicked if an updated version is available.
- Click “Download all” to download firmware for all devices at once.
- Click “Download” to download firmware for individual devices.

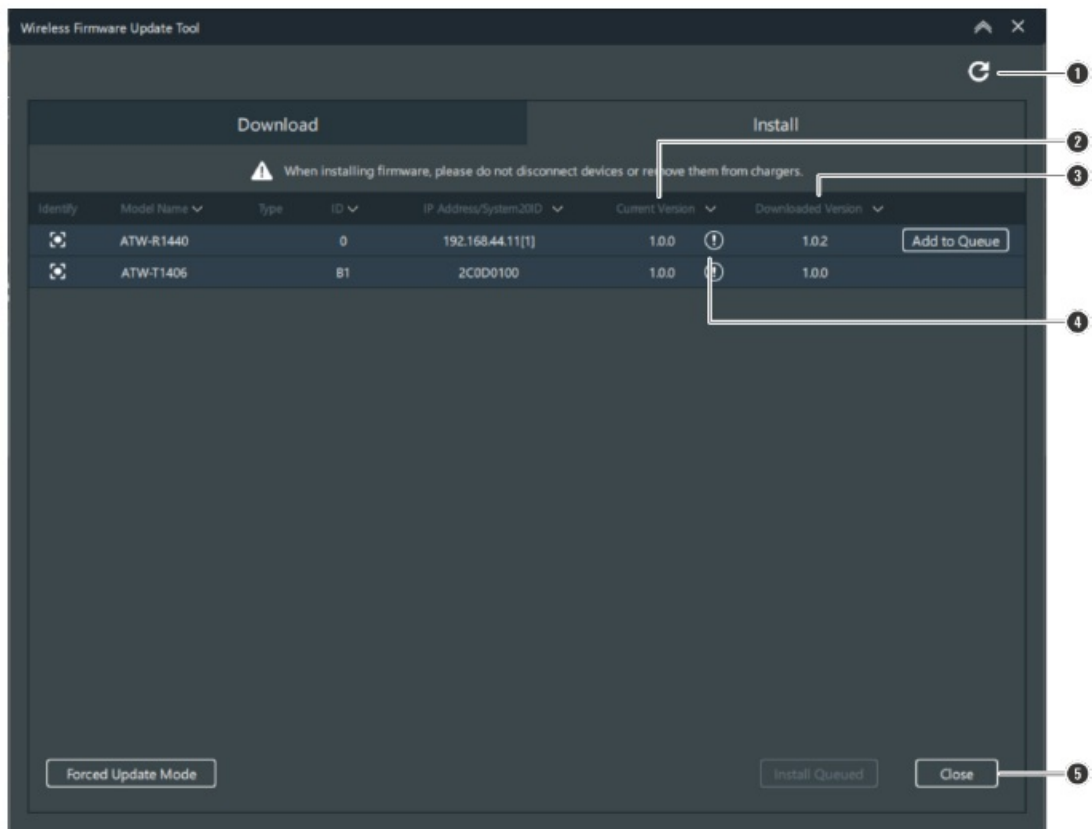
Download				Install
				<a href="#">Download all</a> ⓘ
Model Name	Type	The Latest Version	Downloaded Version	
ESW-R4180DAN		111.0.3	No downloaded file	<a href="#">Download</a>
ESW-R4180DAN	S-1	0.0.47	No downloaded file	<a href="#">Download</a>
ESW-R4180LK		1.1.0	No downloaded file	<a href="#">Download</a>
ESW-CHGs		1.1.1	No downloaded file	<a href="#">Download</a>
ESW-TXs		8.0.1	No downloaded file	<a href="#">Download</a>
ATW-R1440		1.0.2	1.0.0	<a href="#">Download</a>
ATW-T140xs		1.0.1	1.0.0	<a href="#">Download</a>
ATW-CHG3N		903.0.0	No downloaded file	<a href="#">Download</a>

## Installing the firmware

Install the downloaded firmware to the device.

1. Current installation statuses are displayed.

Click “Download” or “Install” to switch between the two tabs.



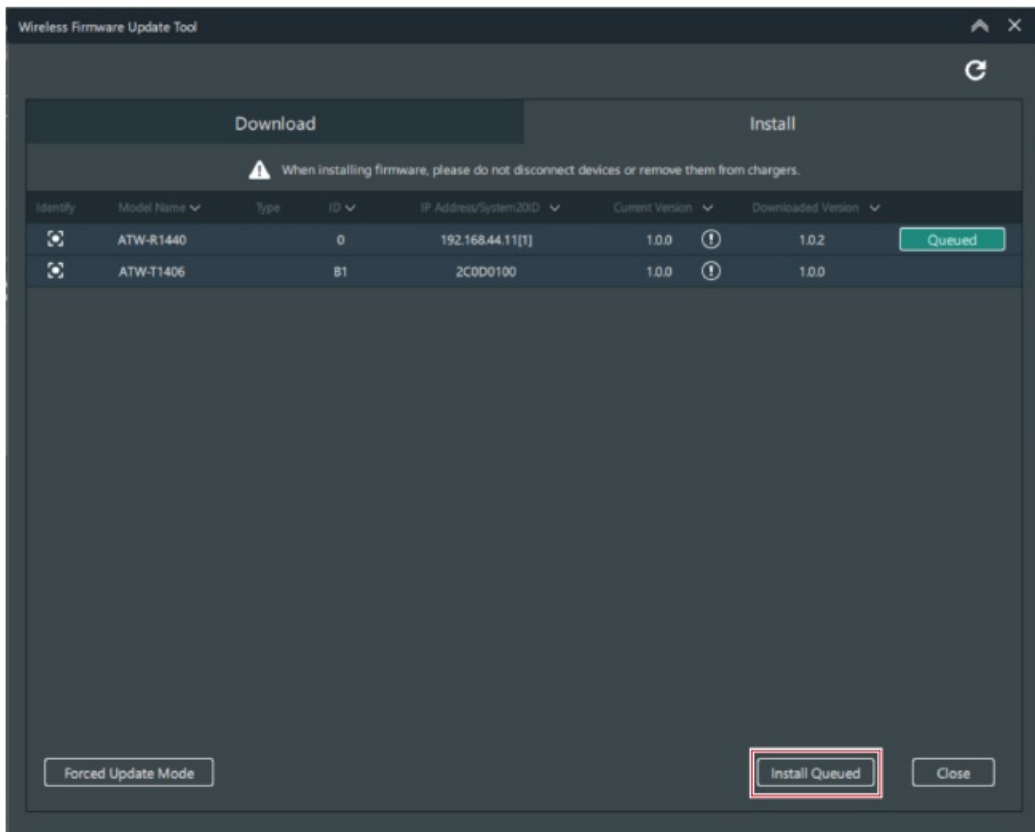
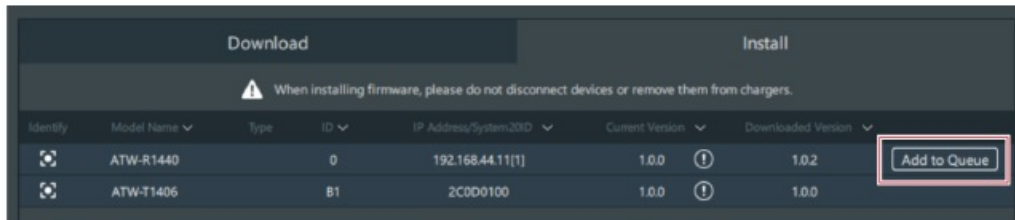
- ❶ Click to refresh the display.
- ❷ Displays the current firmware version of the device.
- ❸ Displays downloaded firmware versions.
- ❹ Displays devices for which an update is available.
- ❺ Click to close the “Wireless Firmware Update Tool” screen.

2. Select devices to install the firmware by clicking “Add to Queue”.

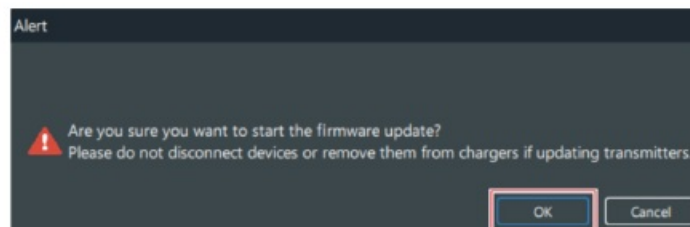
If no devices are displayed, try reconnecting the device and clicking the Update button.

3. Click “Install Queued”.

4.



Click "OK".



Firmware installation will start. Perform the installation by following the on-screen instructions.

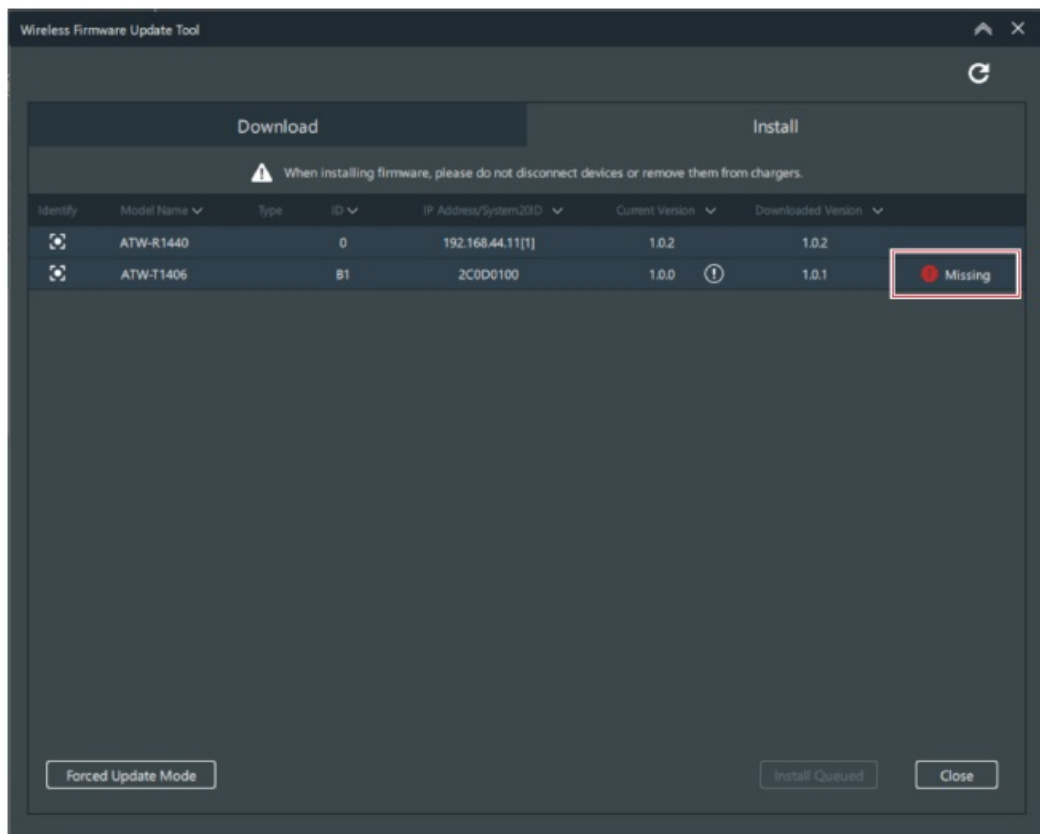
5. Installation results will be displayed once installation is complete.

- If "Complete" is displayed, the installation is complete.
- If "Missing" or "Error" is displayed, the installation has failed. Restart the firmware installation by referring to "When firmware installation fails" (p.19).
- Note • When installing, do not remove any LAN cables or USB cables from the device.

### When firmware installation fails

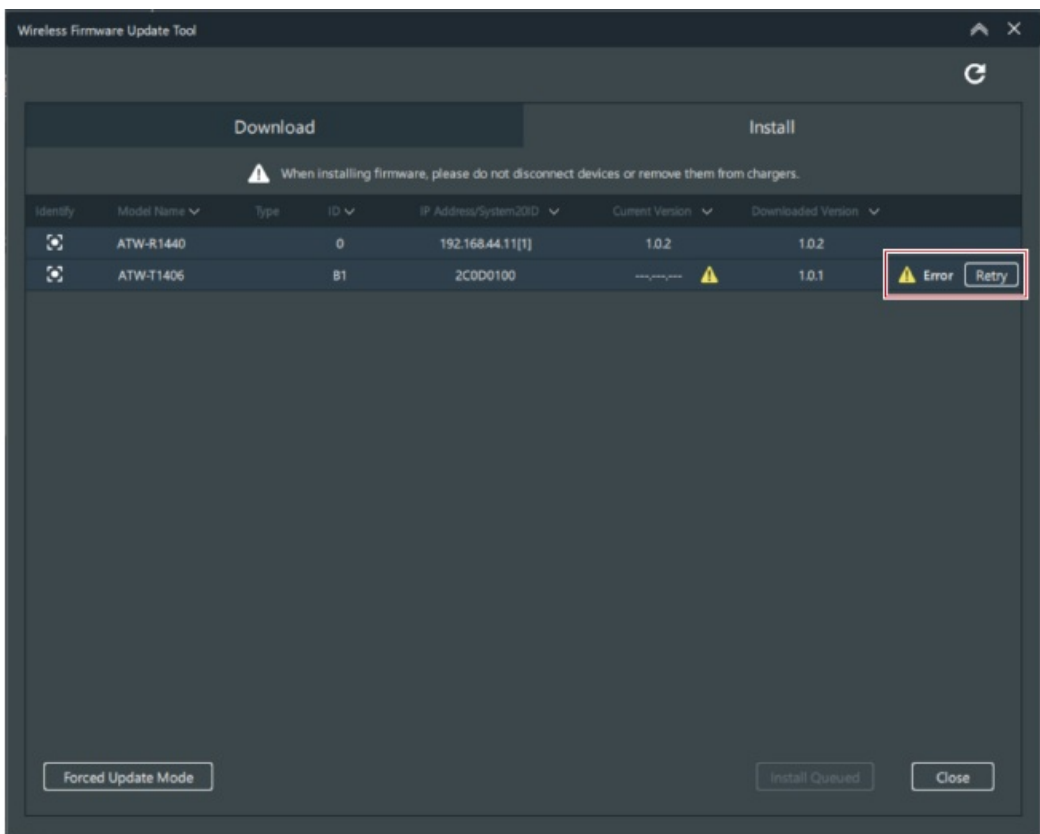
If connection with the device is lost during firmware installation, the installation will fail. In this case, you can install the firmware again by following the steps below.

1. If "Missing" is shown for any device on the "Wireless Firmware Update Tool" screen, try removing and reconnecting the USB cable or LAN cable.
  - Make sure that the receiver is on when performing the receiver update.



2. If "Retry" is displayed, click it.

- The receiver will automatically reboot if the receiver update fails. Wait until the receiver has finished rebooting and the message "Ready for firmware update" appears on the receiver display.
- If "Retry" cannot be clicked when updating the transmitter, try reconnecting the USB cable and waiting until "Retry" can be clicked.



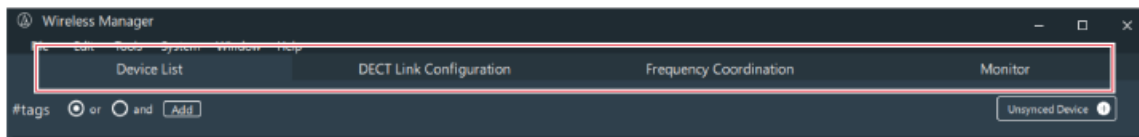
3. Try installing again.

- Perform the installation procedure again by referring to "Installing the firmware" (p.16). Additional information

- “Forced Update Mode” is not available for System 20 PRO.

## Tab menus

See the following table for tab menus available for System 20 PRO.



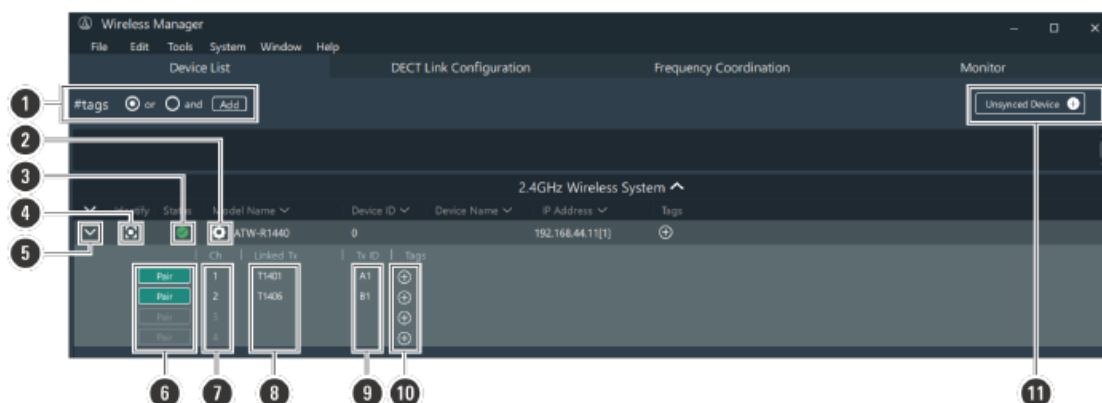
Tab menu	Availability
Device List	Available
DECT Link Configuration	Function for other models
Frequency Coordination	Function for other models
Monitor	Available

### Additional information

You can hide the DECT Link Configuration tab and Frequency Coordination tab in “System” -> “Preferences” -> “Main Tab Preference”.

### How to view the Device List screen

- You can use up to two channels when the reception mode is “Standard” and up to four channels when the reception mode is “HD mode”.
- Unavailable channels will be greyed out.



#### 1. Tags

You can create tags.

Tags can be added to devices and channels and used to filter device lists.

When “and” is selected: The list is filtered to include devices and channels with all of the selected tags.

When “or” is selected: The list is filtered to include devices and channels with any of the selected tags.

#### 2. Device Setting

The Device Setting screen is displayed.

### 3. Sync

Lights when the connected device is synched. Right-click and select “Unsync” to unsync the device.

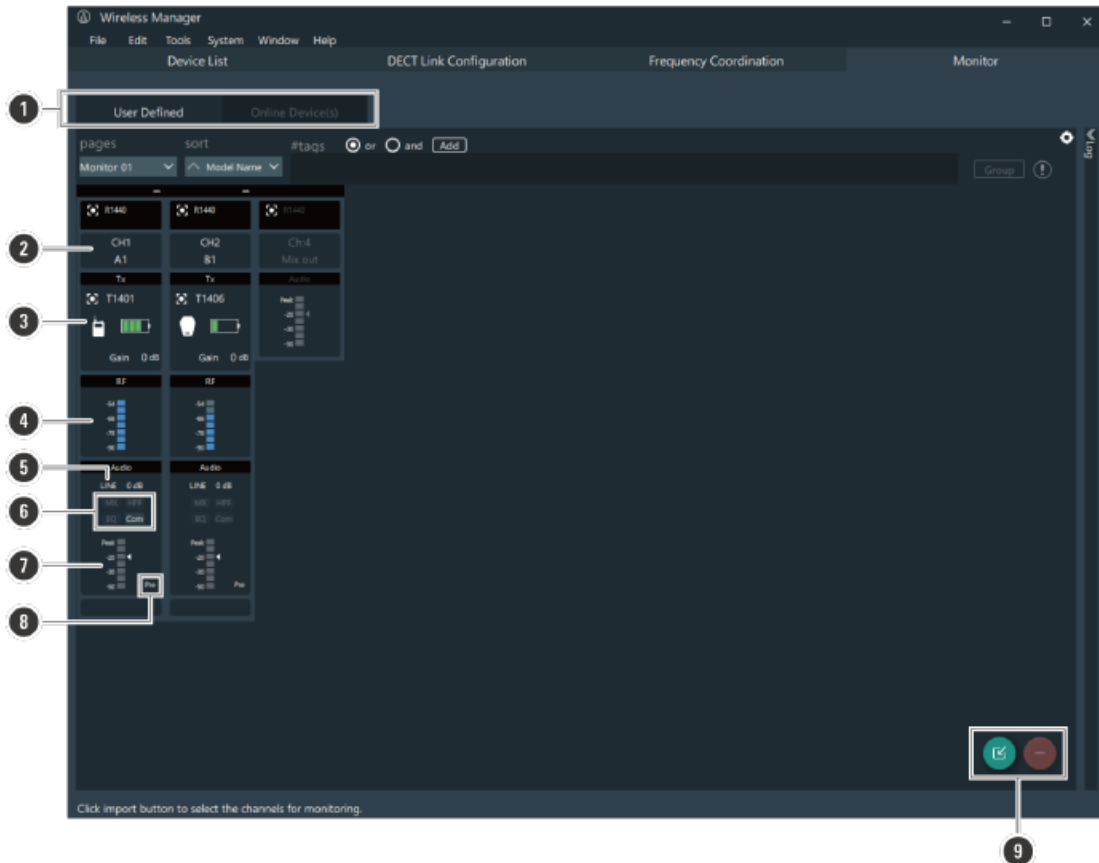
1. Synced
2. Unsynced
3. The receiver unit is not connected.

### 4. Identify

Identify devices. Click to make the display of the corresponding receiver flash.

### 5. Connected Device Information

Click to open and close information on the connected devices.



### 6. Pair

Put the receiver in pairing mode.

### 7. Channel Number

Displays the channel number.

### 8. Model Name

Displays the transmitter model name.

### 9. Transmitter ID

Displays the transmitter ID.

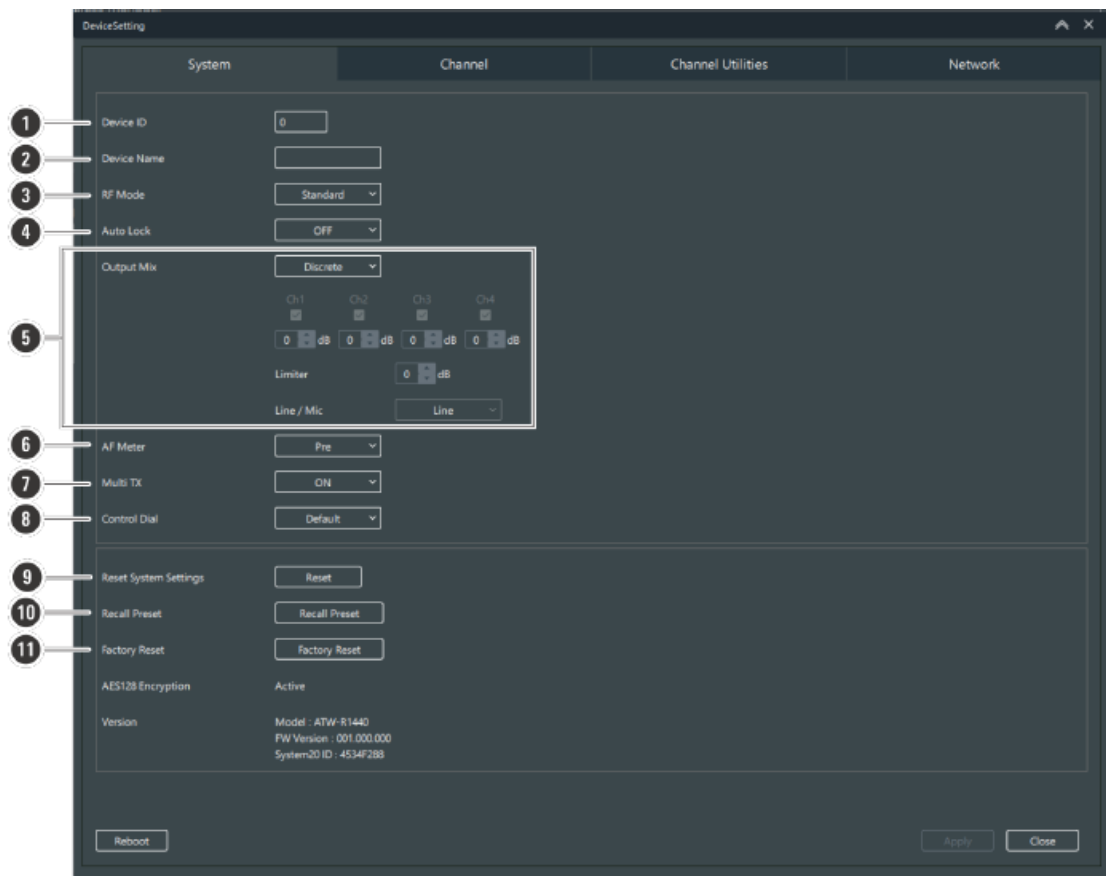
### 10. Add Tags

You can add tags to channels and display them.

### 11. Unsynced Device List

Displays a screen showing a list of unsynched devices.

## How to view the User Defined screen



## 1. Switching Tab

Switches between the “User Defined” and “Online Device(s)” screens.

“User Defined”: Monitors connected devices selected from the Device List.

“Online Device(s)”: Monitors only online devices from the Device List.

## 2. CH/ID

Displays the channel number and transmitter ID.

## 3. Tx

Displays the transmitter information.

## 4. RF

Displays the RF level.

## 5. Output Level Settings

Displays LINE/MIC settings and output level settings.

## 6. MX/EQ/COMP/HPF

The corresponding letters light up whenever the mix output, equalizer, compressor, or high-pass filter is turned on.

## 7. AF Meter

## 8. AF Meter Setting

Displayed when the AF meter is set to “Pre”.

## 9. Add/Delete

Add/delete devices shown on the User Defined screen.

## Device Setting screen

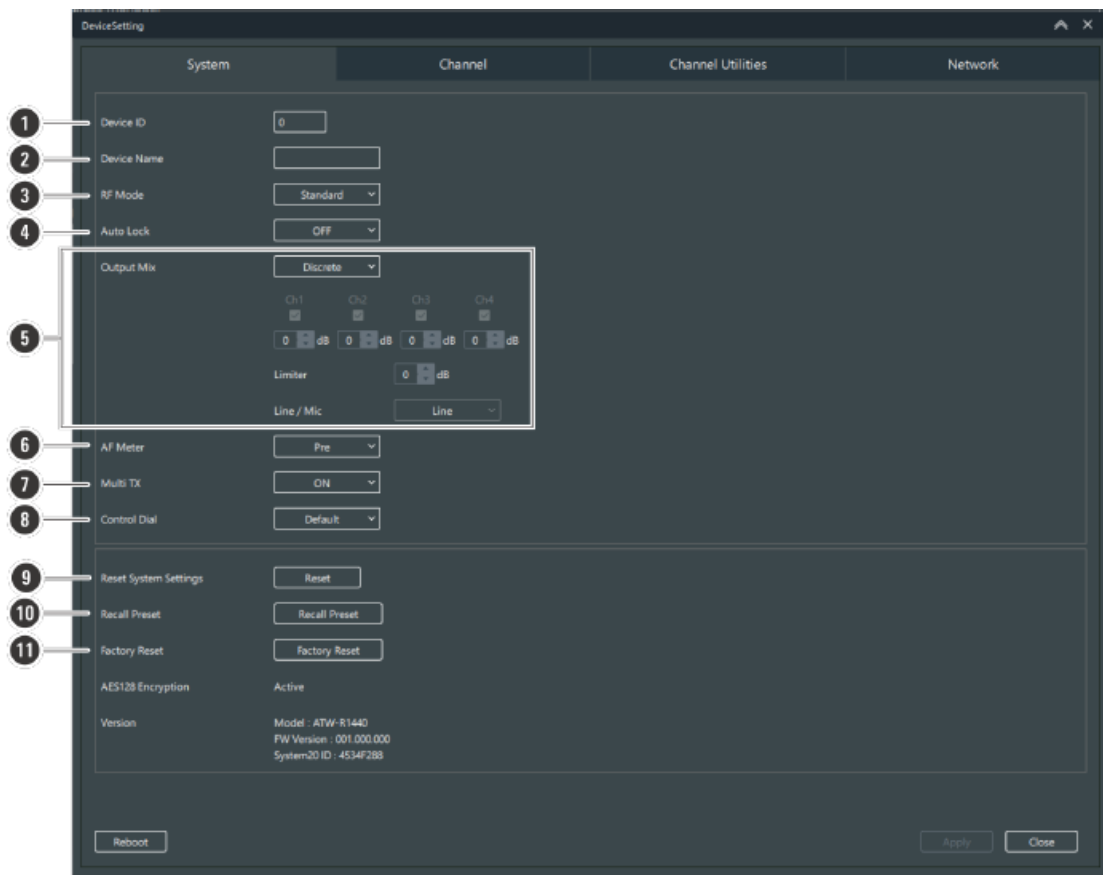
You can configure advanced device settings.

Select a device from the Device List screen and click “Edit” -> “Device” -> “Device Setting”.  
Or click the gear icon on the Device List screen to display the Device Setting.

### System screen

You can change the receiver settings.

1. Device ID  
Set the device ID.
2. Device Name  
Set the device name.
3. RF Mode  
Set the reception mode.



4. Auto Lock  
Turn the lock ON/OFF.
5. Output Mix  
Set the mix output. Selecting “Mix” causes audio from the selected channels to be mixed and output from the AF balanced output connector 4/MIX.
6. AF Meter  
Set the level meter display.
  - Pre (level of the received audio signal)
  - Post (output level of the receiver)
7. Multi TX  
Turn multipairing ON/OFF.
8. Control Dial  
Set the direction of movement when the control dial is turned.



## 9. Reset System Settings

Reset settings to default values.

## 10. Recall Preset

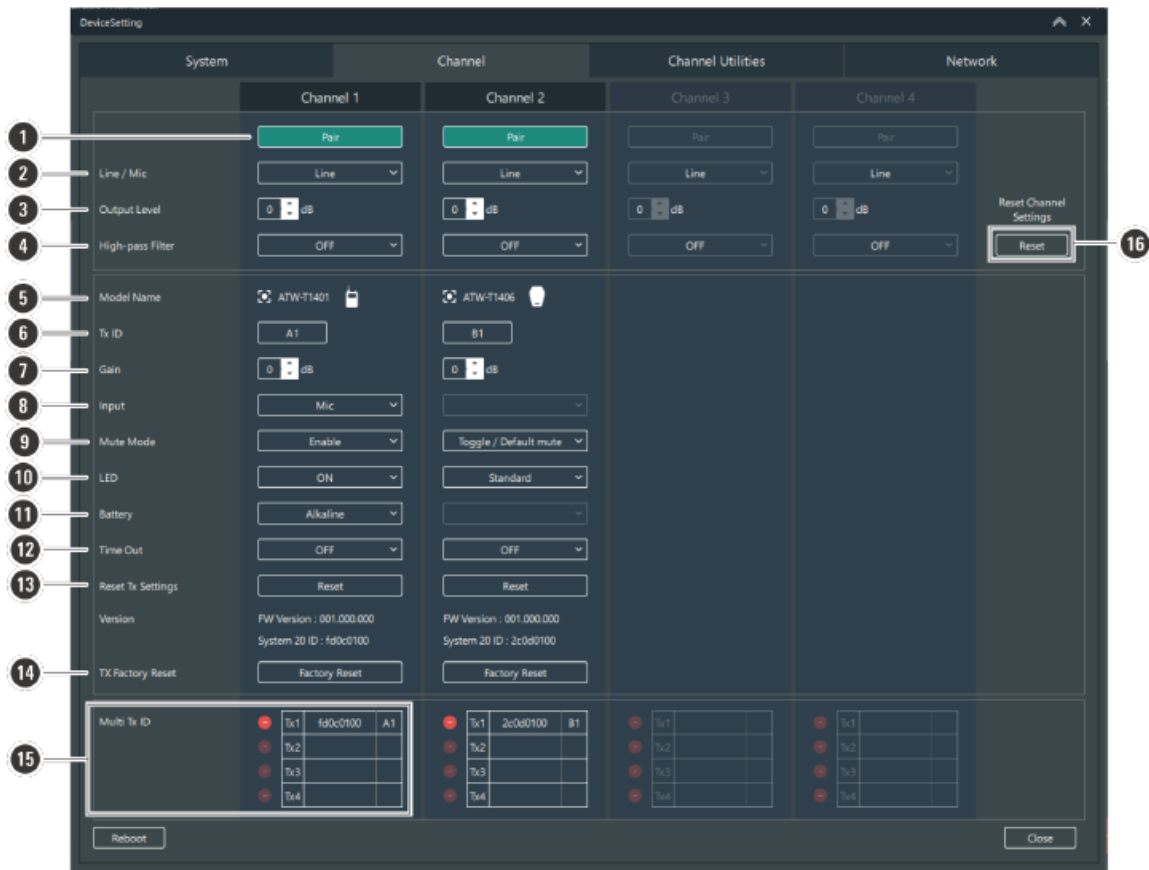
Load preset settings.

## 11. Factory Reset

Reset to original factory settings.

### Channel screen

You can change settings for each channel of the receiver/transmitter.



### 1. Pair

Put the receiver in pairing mode.

### 2. Line/Mic

Select Line or Mic as the output.

### 3. Output Level

Set the output level.

### 4. High-Pass Filter

Turn the HPF (High-Pass Filter) ON/OFF.

### 5. Model Name

Displays the transmitter model name. Click the Identify icon to make the indicator lamp of the corresponding transmitter flash.

### 6. Tx ID

Set the transmitter ID.

### 7. Gain

Set the input gain.

8. Input

Set the connection destination of the input connector to “Mic” (microphone) or “Inst” (guitar cable, etc.) (ATW-T1401 only).

9. Mute Mode

Set the mute mode.

10. LED

Set the indicator display.

11. Battery

Set the type of batteries used (ATW-T1401/ATW-T1402 only).

12. Time Out

Set the time-out time when searching for the receiver to communicate with. If a time-out occurs, the transmitter turns off.

13. Reset Tx Settings

Reset settings for ⑥ through ⑩ to default values.

14. TX Factory Reset

Reset to original factory settings.

15. Multi Tx ID

This can be set when multipairing is set to “On”. You can delete the registration of the paired transmitter.

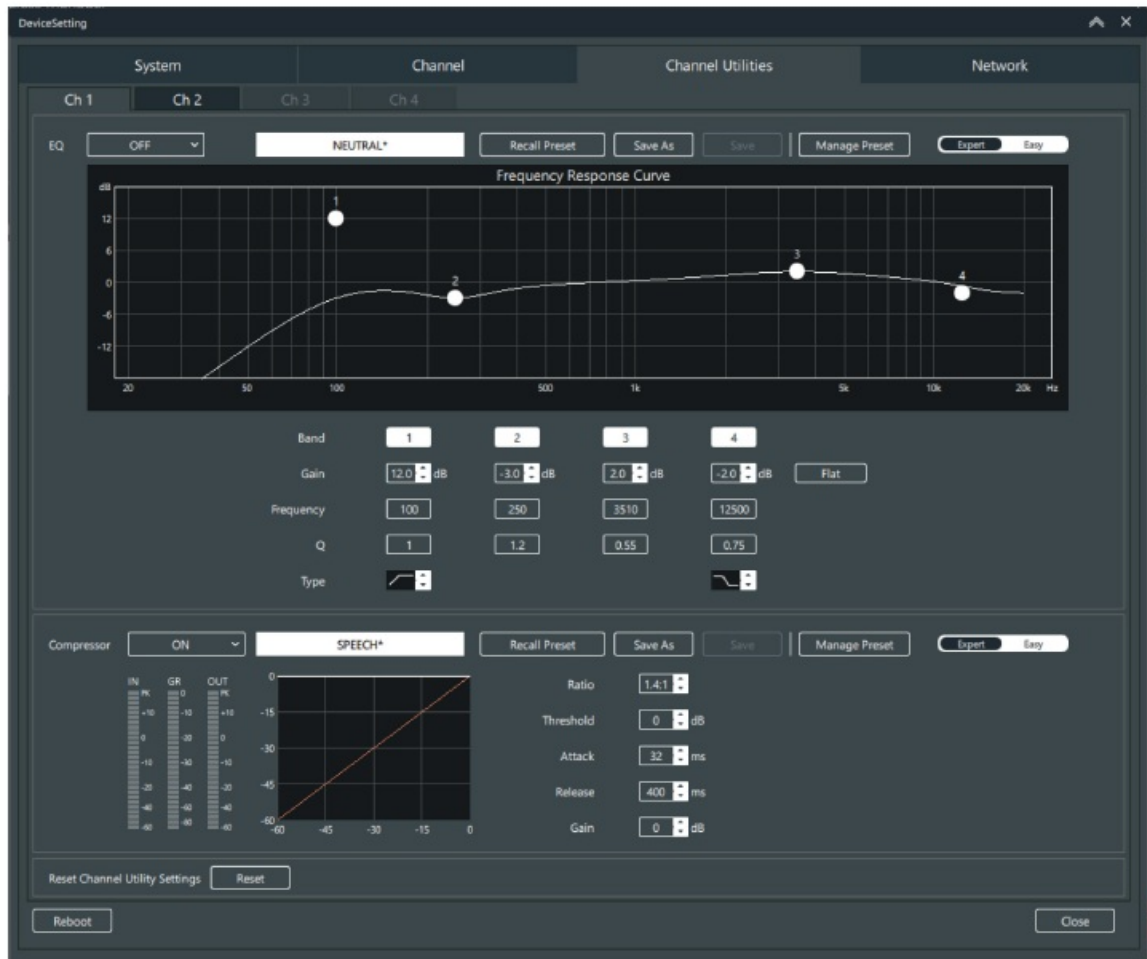
16. Reset Channel Settings

Reset settings for ② through ④ to default values.

**Channel Utilities screen**

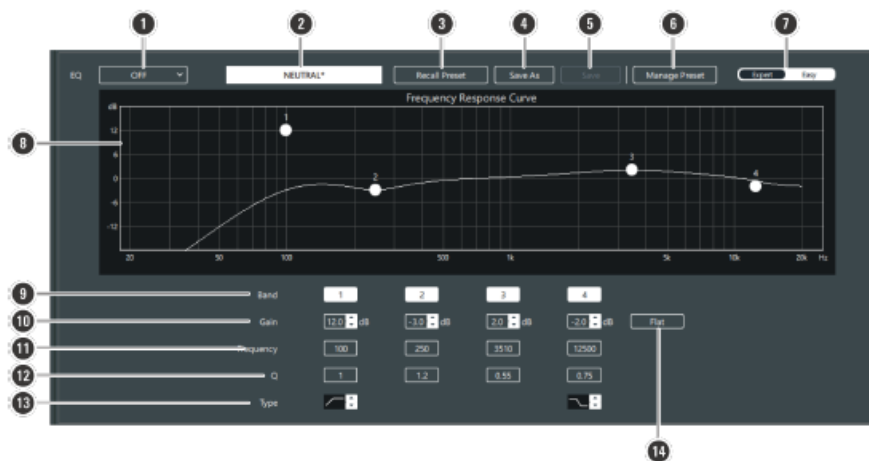
You can configure advanced EQ (equalizer) and compressor settings.

- Settings can be configured for Ch1 to Ch4 by switching tabs.



1. Turn the setting to "ON".
2. Change values or use the mouse to adjust the graph on the screen.

## EQ (equalizer) settings



1. EQ Setting  
Turn the setting ON/OFF.
2. Preset Name  
Displays the currently selected preset name.
3. Recall Preset  
Select a preset.
4. Save As

You can overwrite your own settings with a different name and save them to any location, from USER1 to USER4.

#### 5. Save

Save the edited presets.

#### 6. Manage Preset

You can export, import, or rename set presets.

Presets created with Smart Mixer Manager can also be used interchangeably.

#### 7. Setting Screen Switch

Switch the setting screen between “Expert” (advanced settings) and “Easy” (simple settings).

#### 8. Frequency Response Curve

Display and edit the EQ frequency response curve. Pointers for each band indicate frequency and gain position.

You can edit the frequency and gain by dragging the pointers.

#### 9. Band

Press to enable/disable each band.

#### 10. Gain

Adjust the gain of each band.

#### 11. Frequency

Adjust the frequency of each band.

#### 12. Q

Adjust the Q value of each band.

#### 13. Type

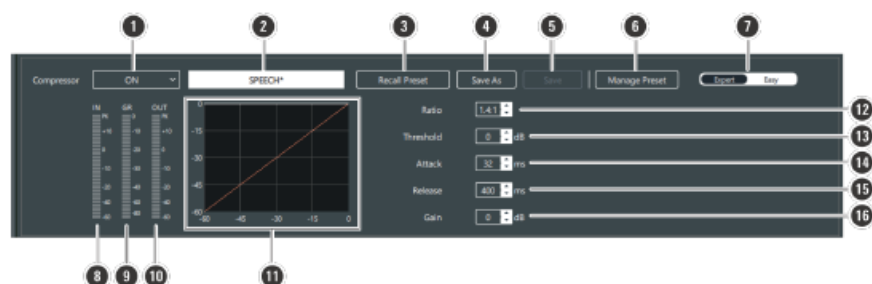
Change the filter type.

#### 14. Flat

For all bands, leave the frequency unchanged and set the gain to 0.

## Compressor settings

#### 1.



#### Compressor Setting

Turn the setting ON/OFF.

#### 2. Preset Name

Displays the currently selected preset name.

#### 3. Recall Preset

Select a preset.

#### 4. Save As

You can overwrite settings for USER1 to USER4 and save using the desired name.

#### 5. Save

Save the edited presets.

## 6. Manage Preset

You can export, import, or rename set presets.

Presets created with Smart Mixer Manager can also be used interchangeably.

## 7. Setting Screen Switch

Switch the setting screen between “Expert” (advanced settings) and “Easy” (simple settings).

## 8. Dynamics IN

Indicates the level of audio input to the dynamics.

## 9. GR (Gain Reduction)

Indicates the degree to which the compressor reduces the gain of the audio.

## 10. Dynamics OUT

Indicates the level of audio output from the dynamics.

## 11. Dynamics Graph

Shows dynamics characteristics.

## 12. Ratio

Set the compressor ratio.

## 13. Threshold

Set the compressor threshold.

## 14. Attack

Set the compressor attack time.

## 15. Release

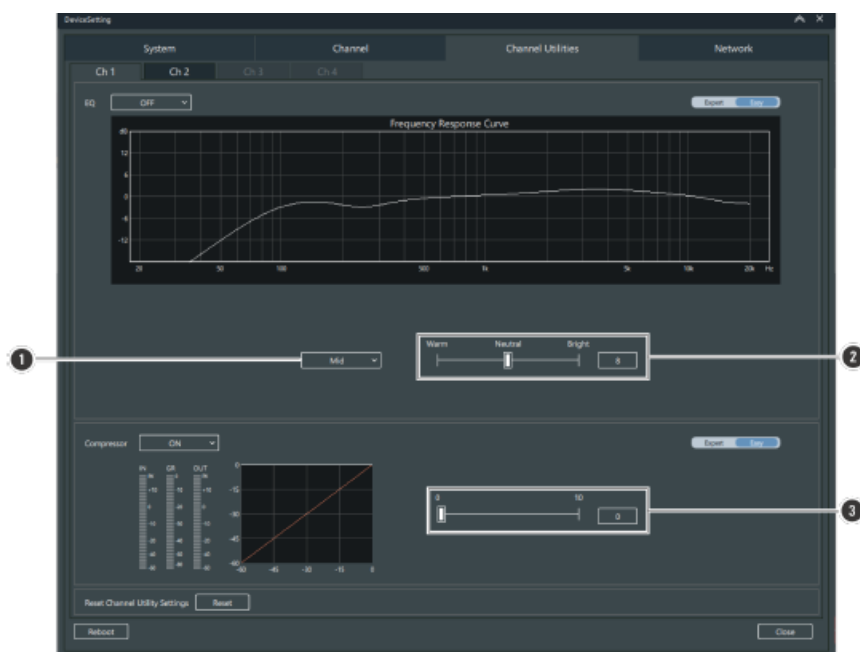
Set the compressor release time.

## 16. Gain

Set the output gain of the dynamics.

## Simple settings screen (Easy)

This screen is shown when “Easy” is selected using the Setting Screen Switch.



## 1. Audio Type

Select Low, Mid, or High.

## 2. Tone Slider

Adjust the tone by sliding the bar. Numbers between 1 and 15 can also be entered.

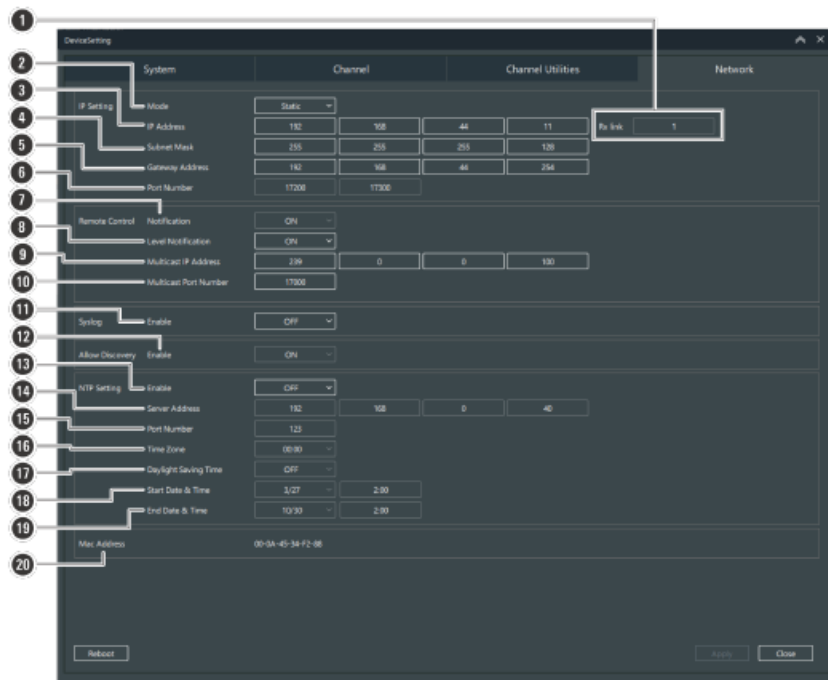
## 3. Strength Slider

Adjust the strength by sliding the bar. Numbers between 0 and 10 can also be entered.

## Network screen

Make changes to network settings.

1.



Rx link

Shows the connection order in the Rx link.

## 2. Mode

Set how to obtain IP addresses.

“Auto”: IP addresses are automatically assigned.

“Static”: The specified static IP addresses are used.

## 3. IP Address

Specify or display the static IP address.

## 4. Subnet Mask

Set the subnet mask.

## 5. Gateway Address

Set the gateway address.

## 6. Port Number

Displays the port number.

Notification

Set to receive notifications from the receiver during remote control.

## 7. Level Notification

Set whether to include AF and RF levels in notifications from the receiver during remote control.

Although communication will be reduced if turned OFF, the Wireless Manager meter will no longer be visible.

## 8. Multicast IP Address

Set the address for multicast.

9. Multicast Port Number

Set the port number for multicast.

10. Syslog

Set whether to send the log message to the Syslog server.

11. Allow Discovery

Set automatic detection by the software.

Do not turn this off if using the software.

12. NTP Setting

Set whether to enable or disable the NTP.

13. Server Address

Set the NTP server address.

14. Port Number

Set the NTP port number.

15. Time Zone

Set the time difference from the UTC (Coordinated Universal Time).

16. Daylight Saving Time

Turn on/off the daylight saving time.

17. Start Date & Time

Set the start date and time of daylight saving time.


18. End Date & Time

Set the end date and time of daylight saving time.

19. Mac Address

Displays the Mac Address.

## Documents / Resources

  Wireless Manager (System 20 PRO) User Manual  02421	<a href="#">audio-technica WLM 20 Pro Digital Wireless System</a> [pdf] User Manual WLM 20 Pro Digital Wireless System, WLM 20 Pro, Digital Wireless System, Wireless System
---	---

## References

- [User Manual](#)

[Manuals+.](#) [Privacy Policy](#)

This website is an independent publication and is neither affiliated with nor endorsed by any of the trademark owners. The "Bluetooth®" word mark and logos are registered trademarks owned by Bluetooth SIG, Inc. The "Wi-Fi®" word mark and logos are registered trademarks owned by the Wi-Fi Alliance. Any use of these marks on this website does not imply any affiliation with or endorsement.