



audio pro A28 Wi-Fi Multiroom Bookshelf Speaker User Manual

[Home](#) » [audio pro](#) » audio pro A28 Wi-Fi Multiroom Bookshelf Speaker User Manual 



Contents

- 1 [audio pro A28 Wi-Fi Multiroom Bookshelf Speaker User Manual](#)
- 2 [REAR VIEW](#)
- 3 [CONTROLS](#)
- 4 [LED INDICATOR](#)
- 5 [CONNECTING TO THE NETWORK](#)
- 6 [CONNECT TO POWER](#)
- 7 [DOWNLOAD THE APP](#)
- 8 [SETUP](#)
- 9 [MAKING A PRESET](#)
- 10 [RESTREAMING](#)
- 11 [PLAYING FROM SPOTIFY](#)
- 12 [AIRPLAY](#)
- 13 [BLUETOOTH](#)
- 14 [PLAYING FROM CONNECTED DEVICES](#)
- 15 [SPECIFICATIONS](#)
- 16 [IMPORTANT SAFETY INSTRUCTIONS](#)
- 17 [Documents / Resources](#)
 - 17.1 [References](#)

audio pro A28 Wi-Fi Multiroom Bookshelf Speaker User Manual



WELCOME TO WIRELESS HIFI.

The Audio Pro wireless HiFi products lets you enjoy your favourite audio in a multiroom setup everywhere around your home.

Our new generation of products uses Audio Pro wireless technology, Google Cast, AirPlay 2, Spotify Connect and Tidal Connect.

By utilizing your WiFi network & smartphone apps you can explore and play audio from streaming services and your own music library.

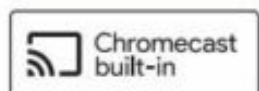
If you don't have a WiFi network, you can use Bluetooth or connect your audio equipment via cable. The legendary Audio Pro sound quality is included.



The Spotify Software is subject to third party licenses found here:
www.spotify.com/connect/third-party-licenses.



The Wi-Fi CERTIFIED Logo is a certification mark of the Wi-Fi Alliance.



Google Home

Google, Google Play, Chromecast and other related marks are trademarks of Google LLC. Chromecast built-in may require subscription(s). The Google Assistant requires an internet connection and is not available in certain countries and languages. Availability and reach of certain features and services are device, service, and network-dependent and may not be available in all areas. Controlling certain devices in your home requires compatible smart devices. Subscriptions for services and applications may be required and additional terms, conditions and/or charges may apply. The Android robot is created and shared by Google and used according to the Creative Commons 3.0 Attribution License.



The Bluetooth® word mark and logos are registered trademarks owned by Bluetooth SIG, Inc. and any use of such marks by AUDIO PRO AB, is under license. Other trademarks and trade names are those of their respective owners.



Apple Home

© Apple, the Apple logo, AirPlay, iPad, iPhone, and iPod touch are trademarks of Apple Inc., registered in the U.S. and other countries. App Store is a service mark of Apple Inc.



© AUDIO PRO AB, SWEDEN. ALL RIGHTS RESERVED.
TRADEMARKS ARE THE PROPERTY OF AUDIO PRO AB, SWEDEN.
Audio Pro AB, Garnisonsgatan 52 SE-254 66 Helsingborg, Sweden
©1978-2020 Audio Pro AB Sweden.

Audio Pro®, the Audio Pro logotype, the 'a' symbol, and ace-bass® are all registered trademarks of Audio Pro AB, Sweden.

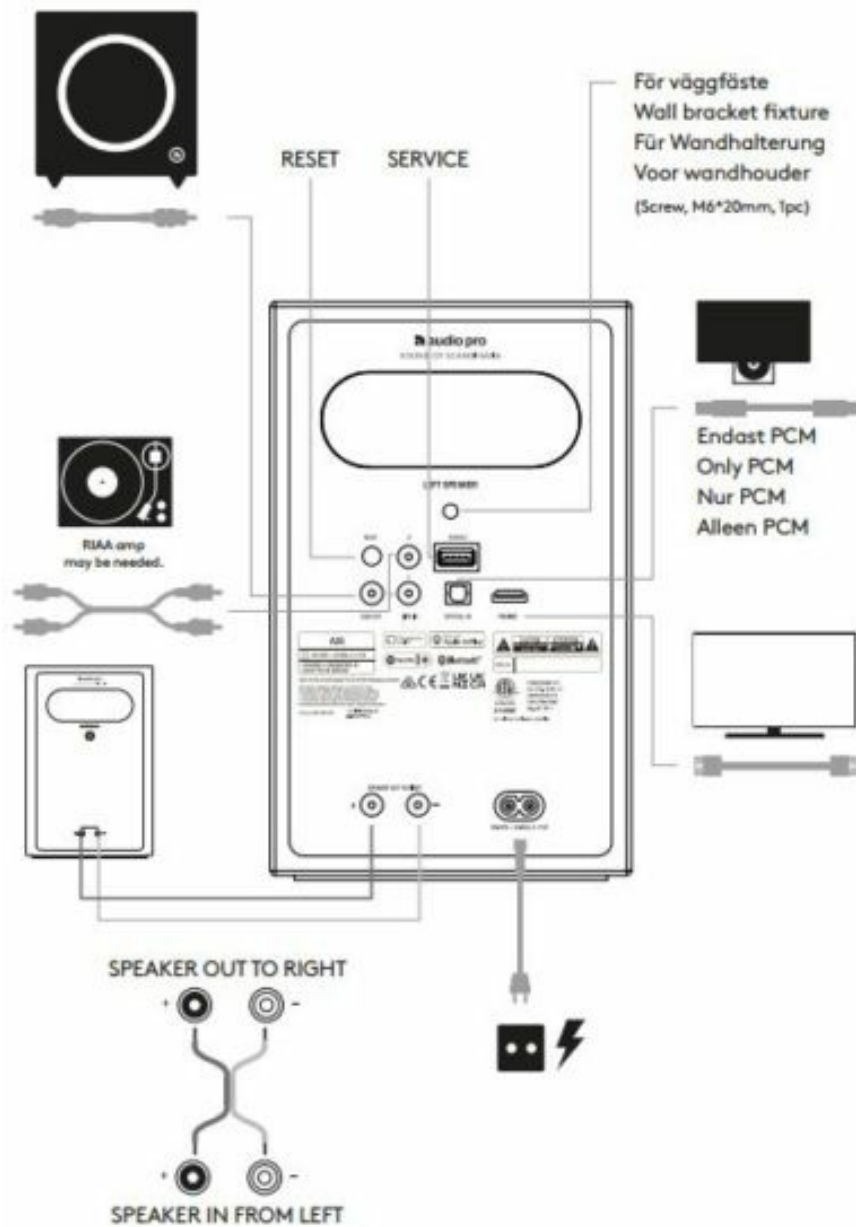
All rights reserved. Audio Pro follows a policy of continuous advancement in development.

Specifications may be changed without notice.

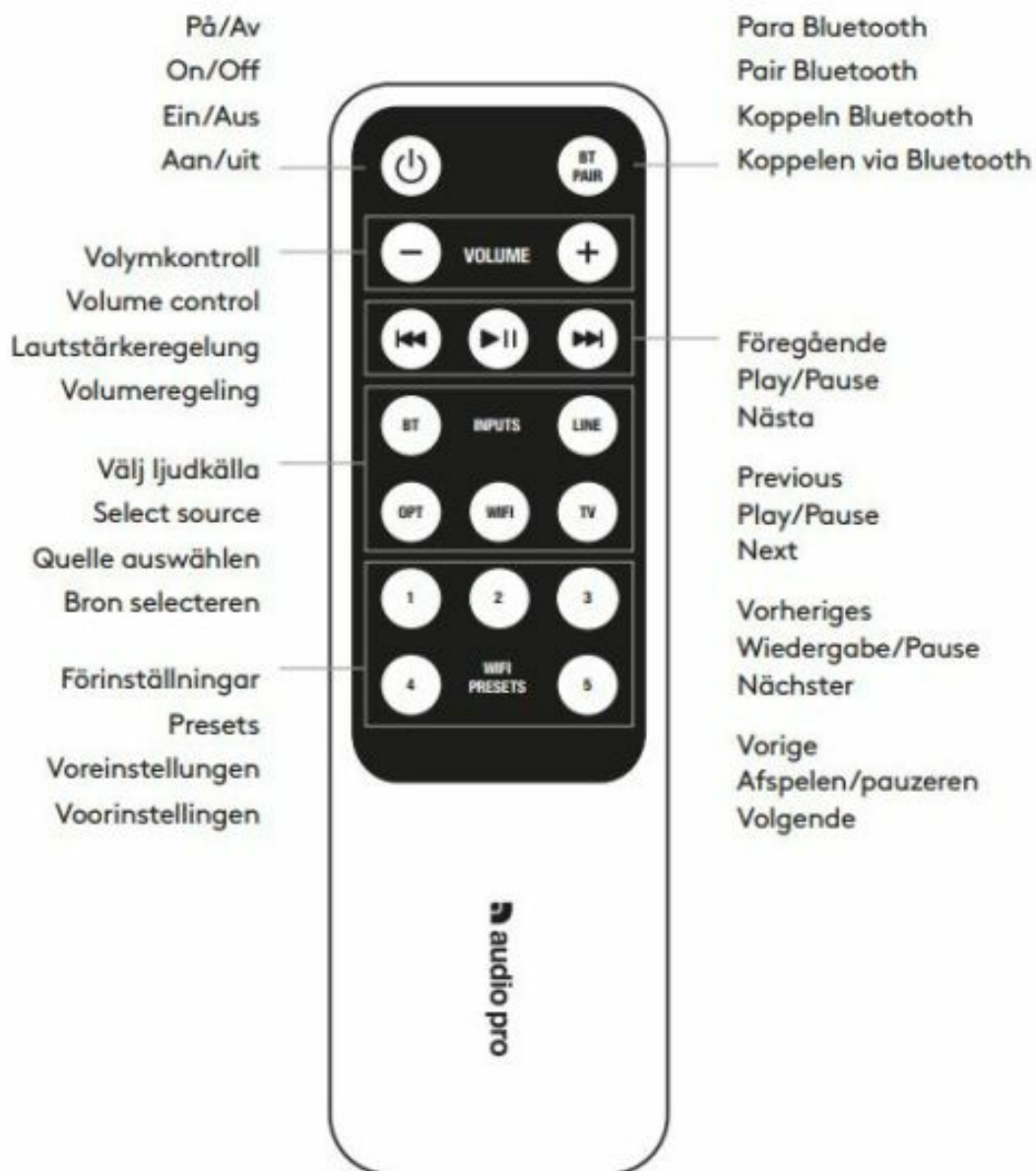
All other products and services mentioned may be trademarks or service marks of their respective owners.

THIS DOCUMENT CONTAINS INFORMATION THAT IS SUBJECT TO CHANGE WITHOUT NOTICE.

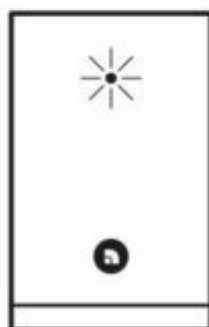
REAR VIEW



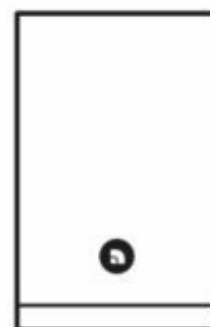
CONTROLS



LED INDICATOR

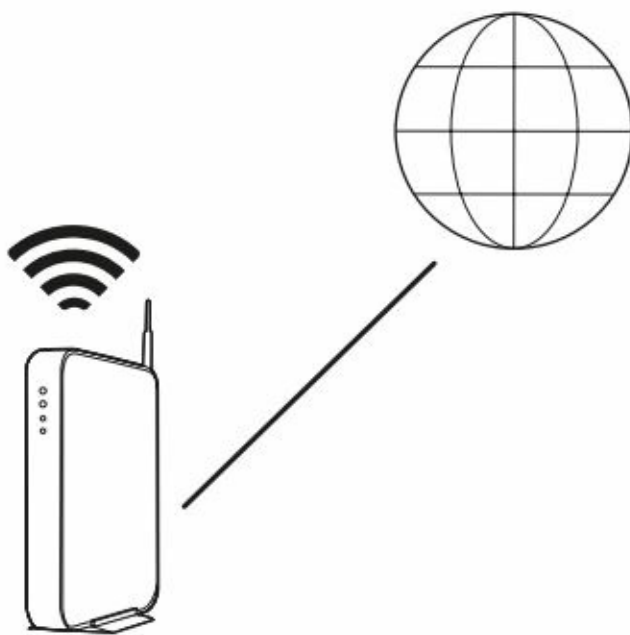


Vit/White/Weiss/Wit	WiFi
Röd/Red/Rot/Rood	Optical
Blå/Blue/Blau/Blauw	Bluetooth
Grön/Green/Grün/Groen	LINE
Lila/Purple/Lila/Purper	ARC (TV)



CONNECTING TO THE NETWORK

YOU NEED THIS



Trådlös router med internetanslutning.

Wireless router with internet connection.

WLAN-Router mit Internetverbindung.

Draadloze router met internetverbinding.



iOS eller Android enhet ansluten till ditt nätverk.

iOS or Android device connected to your network.

iOS- oder Android-Gerät, verbunden mit Ihrem Netzwerk.

iOS- of Android-apparaat dat met uw netwerk is verbonden.



Ditt nätverkslösenord

Your wifi password

Ihr WLAN-Passwort

Je wifi-wachtwoord

Character set UTF-8 for password is supported.

KEY REQUIREMENTS

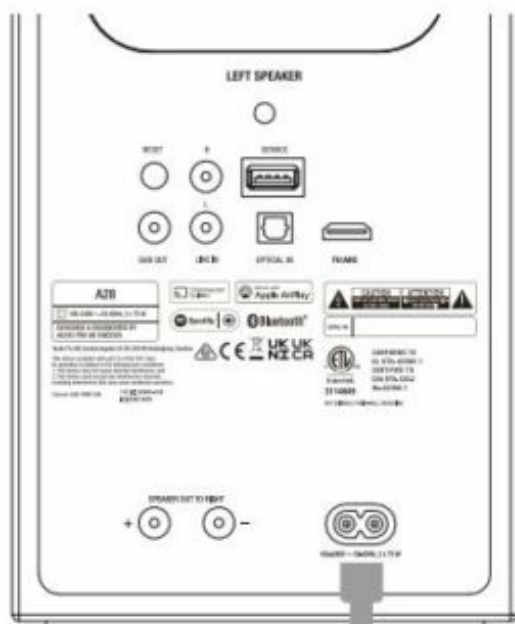
NETWORK

- Your network must have a high-speed internet connection, as the Audio Pro system is designed to utilise free, online software updates.
- Audio Pro speakers communicate via a 2.4 GHz / 5 GHz home network with support for 802.11 b/g/n/ac/ wireless technology.

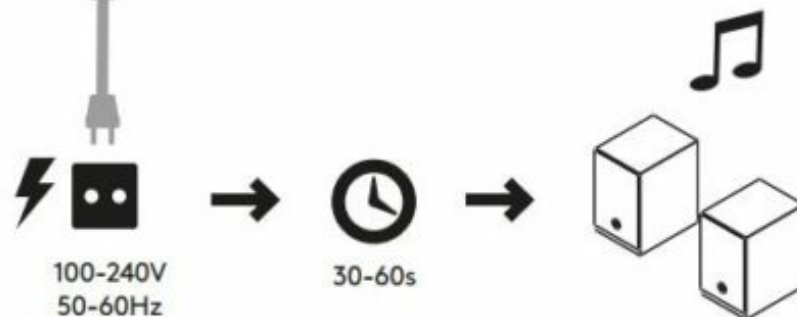
ROUTER

- High-speed DSL/cable modem, or fibre-to-the-home broadband connection for proper playback of internet-based music services.
- Different routers provide different levels of performance. Please use a good wireless router to achieve the best possible performance.

CONNECT TO POWER



Efter en ton är högtalaren klar för setup.
 After a sound, the speaker is ready for setup.
 Nach dem Ton, bereit für die Einrichtung.
 Na het afspelen van een signaal is de
 luidspreker klaar voor configuratie.



Place the speaker close to the router when carrying out the setup. You can subsequently view the signal strength in the app in order to test other positions.

DOWNLOAD THE APP



Sök efter / Search for / Suchen Sie nach / Zoek naar



Audio Pro Control



Apple Home



Google Home

SETUP

Launch the app and follow the instructions.



app.audiopro.com



apple.com/ios/home



bit.ly/google--home



MAKING A PRESET

CONTROLS

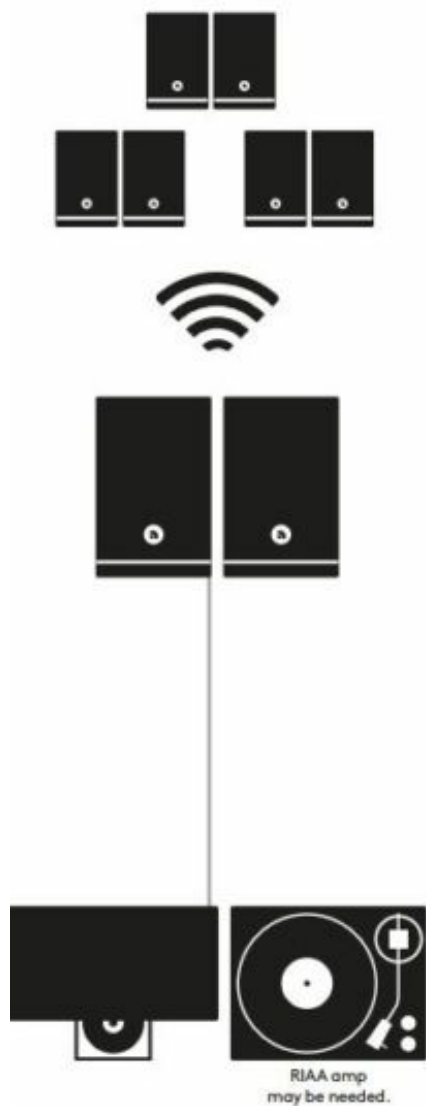


IN THE APP

app.audiopro.com

RESTREAMING

Connected devices sound can be played to more speakers wirelessly. Choose master speaker in group to play.



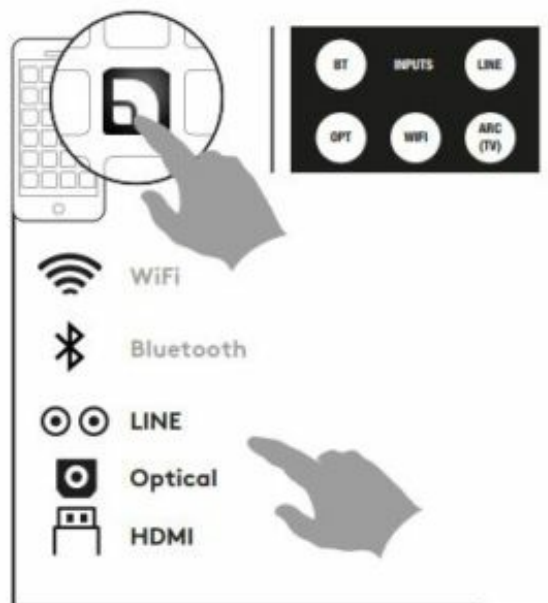
Välj ansluten källa.

Choose the connected input source.

Wählen Sie die angeschlossene Quelle.

Kies de verbonden bron.

SELECT SOURCE IN APP / ON REMOTE



PLAYING FROM SPOTIFY

Use your phone, tablet or computer as a remote control for Spotify.
Go to spotify.com/connect to learn how.

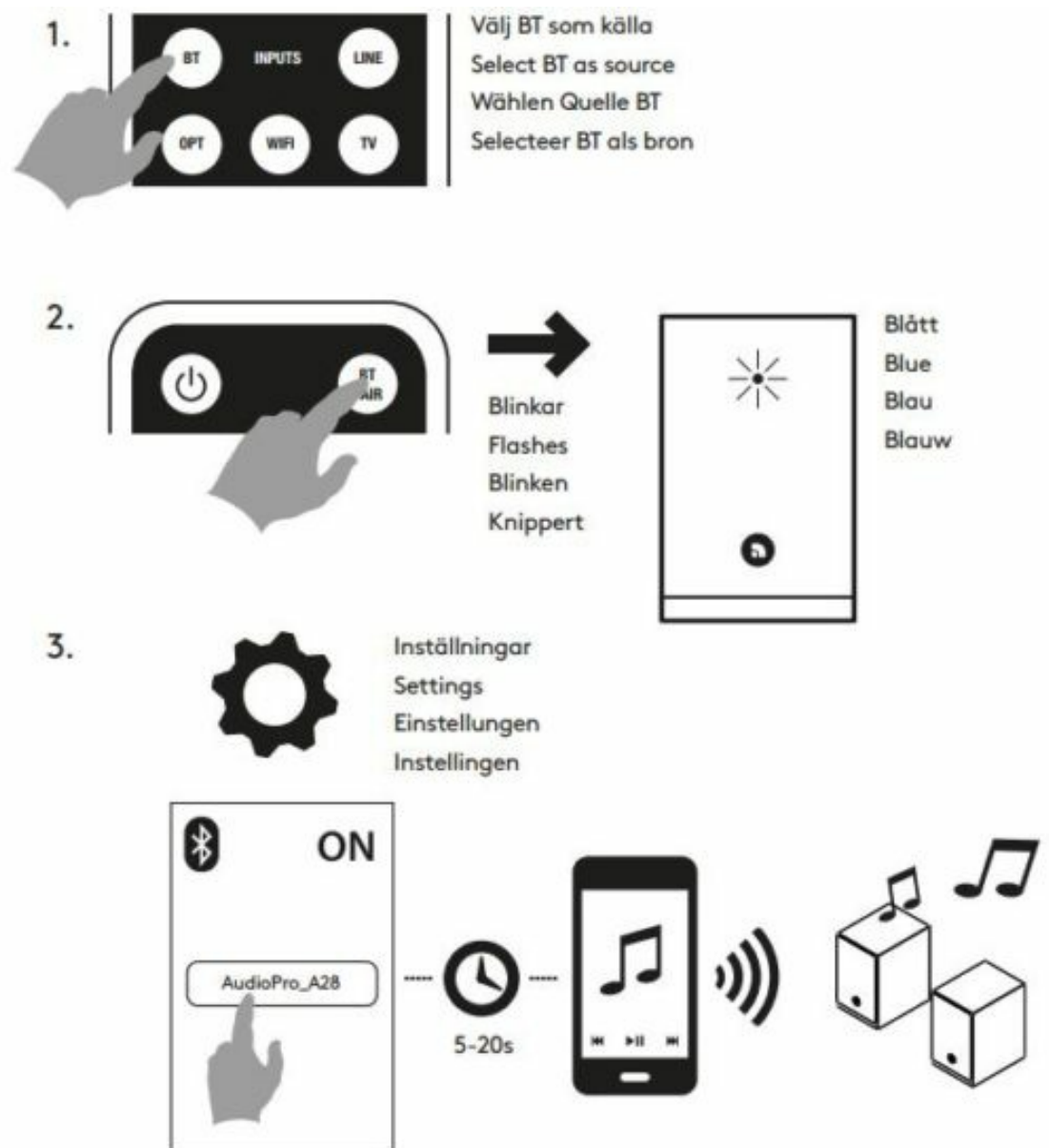
AIRPLAY

Tap AirPlay, and choose a speaker.



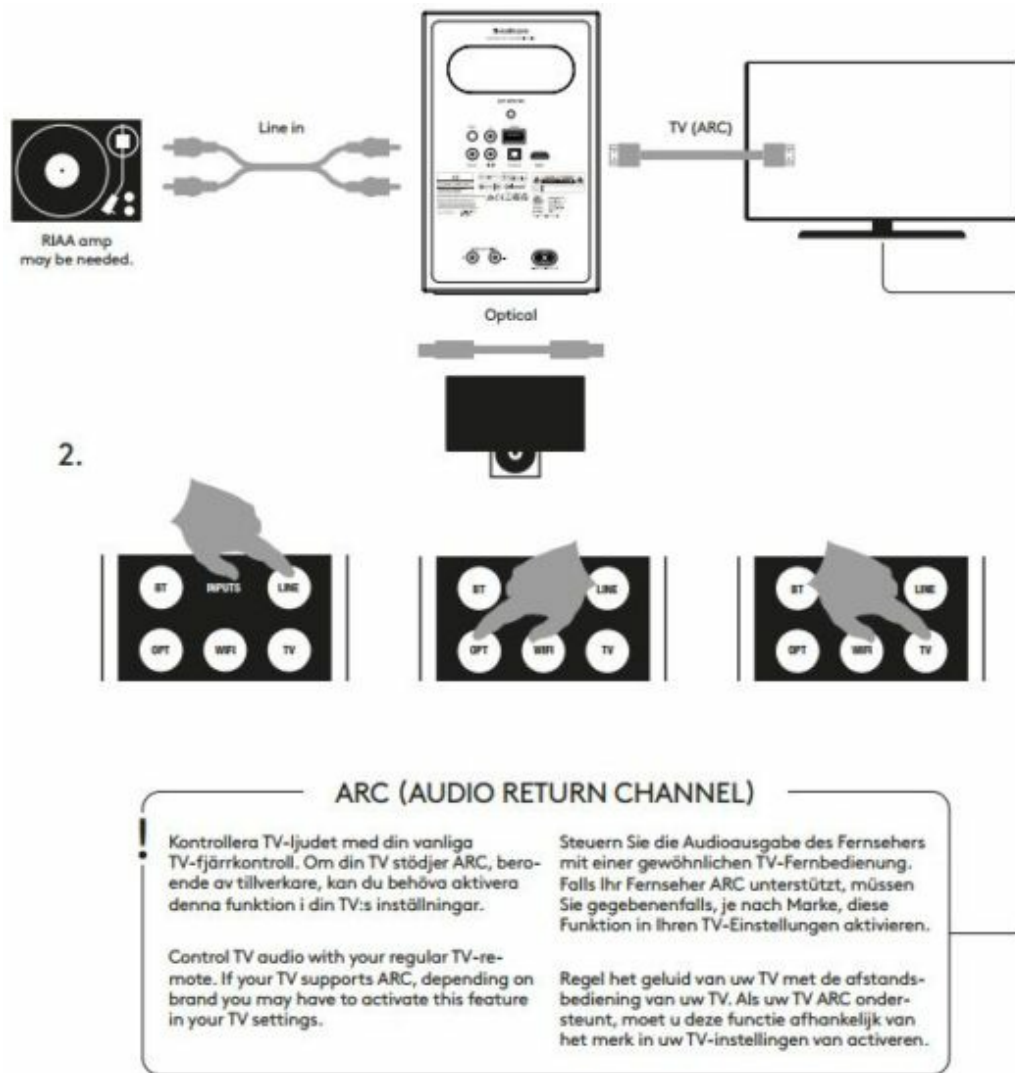
BLUETOOTH

PAIR



PLAYING FROM CONNECTED DEVICES

1. Connect using a cable.



WIFI FAQ

EN: PROBLEMS? TRY THIS FIRST:

- Make sure your mobile device is connected to your wireless network before you try to connect your speaker.
- Restart your router and speakers, (unplug the power cord, plug it in and restart it)
- Place the speaker close to the router when carrying out the setup. You can subsequently view the signal strength for other positions in the app.

SPECIFICATIONS

Type: Powered stereo speaker system with bass reflex
Amplifier: Digital Class D amplifier, 2x75W
Tweeter: 1" textile dome tweeter
Woofer: 4.5"
Frequency range: 45-20 000Hz
Crossover frequency: 2800Hz
Dimensions HxWxD: 238x150x200 mm
Inputs: WiFi, Bluetooth 4.2, 1 x Line in
1 x TOSLINK optical digital (only PCM), 1 x ARC/TV.
Outputs: 1 x Sub Out
Power consumption STB(WiFi)/ON: 1,85 W / 5,20 W
Wireless network compatibility: 802.11 b/g/n/ac, 2.4GHz/5GHz
Supported audio formats: MP3, WMA, AAC, FLAC, Apple Lossless.



The lightning flash with arrowhead symbol, within an equilateral triangle, is intended to alert the user to the presence of uninsulated “dangerous voltage” within the product’s enclosure that may be of sufficient magnitude to constitute a risk of electric shock to persons.

IMPORTANT SAFETY INSTRUCTIONS

1. Read these instructions.
2. Keep these instructions.
3. Heed all warnings.
4. Follow all instructions.
5. Do not use this product near water.
6. Clean only with dry cloth.
7. Operating temperature (°C) 5–40 Humidity (%) no condensation 30–90
8. Do not block any ventilation openings. Install in accordance with the manufacturer’s instructions.
9. Minimum distances around the product for sufficient ventilation, 10 cm.
10. The ventilation should not be impeded by covering the ventilation openings with items, such as newspapers, table-cloths, curtains, etc.
11. Do not install near any heat sources such as radiators, heat registers, stoves, or other product (including amplifiers) that produce heat.
12. Protect the power cord from being walked on or pinched particularly at plugs, convenience receptacles, and the point where they exit from the product.
13. Only use attachments/accessories specified by the manufacturer.
14. Unplug this product during lightning storms or when unused for long periods of time.
15. Refer all servicing to qualified service personnel. Servicing is required when the product has been damaged in

- any way, such as power-supply cord or plug is damaged, liquid has been spilled or objects have fallen into the product, the product has been exposed to rain or moisture, does not operate normally, or has been dropped.
16. Damage Requiring Service Unplug the product from the wall outlet and refer servicing to qualified service personnel under the following conditions:
- A. When the power-supply cord or plug is damaged,
 - B. If liquid has been spilled, or objects have fallen into the product,
 - C. If the product has been exposed to rain or water,
 - D. If the product does not operate normally by following the operating instructions. Adjust only those controls that are covered by the operating instructions as an improper adjustment of other controls may result in damage and will often require extensive work by a qualified technician to restore the product to its normal operation,
 - E. If the product has been dropped or damaged in any way, and
 - F. When the product exhibits a distinct change in performance this indicates a need for service.
17. Object and Liquid Entry Never push objects of any kind into the product through openings as they may touch dangerous voltage points or short-out parts that could result in a fire or electric shock. The product shall not be exposed to dripping or splashing and no objects filled with liquids, such as vases shall be placed on the product. No naked flame sources such as lighted candles etc., should never be placed on the product.
18. Make sure that there is adequate ventilation if you install the product in confined spaces, such as bookshelves or racks. Leave a distance of 20 cm above and on both sides of the product and 10 cm behind it. The back end of a shelf or board closest to the top of the product should be pushed forward to give a gap of about 10 cm behind. In this way an exuding channel is formed where heated air can flow up.
19. The power supply and power cord for this product is intended for indoor use only.
20. Use only the supplied power cord/adaptor.

(AC symbol, Alternating current)



(Class II product – Double Insulated)

The mains plug is used as the disconnect device, the disconnect device shall remain readily operable. The socket-outlet shall be installed near the equipment and shall be easily accessible.

REMOTE CONTROL BATTERY INFORMATION

Do not ingest battery, Chemical Burn Hazard.

This product contains a coin / button cell battery. If the coin / button cell battery is swallowed, it can cause severe internal burns in just 2 hours and can lead to death.

Keep new and used batteries away from children.

If the battery compartment does not close securely, stop using the product and keep it away from children.

If you think batteries might have been swallowed or placed inside any part of the body, seek immediate medical attention.



CAUTION!

Risk of fire or explosion if the battery is replaced by an incorrect type.



MODEL: A28. FCC ID: 2AGNC-A38

FCC STATEMENT

1. This device complies with Part 15 of the FCC Rules. Operation is subject to the following two conditions:
 - (1) This device may not cause harmful interference, and
 - (2) This device must accept any interference received, including interference that may cause undesired operation.
2. any Changes or modifications not expressly approved by the party responsible for compliance could void the user's authority to operate the equipment.

NOTE: This equipment has been tested and found to comply with the limits for a Class B digital device, pursuant to Part 15 of the FCC Rules. These limits are designed to provide reasonable protection against harmful interference in a residential installation. This equipment generates uses and can radiate radio frequency energy and, if not installed and used in accordance with the instructions, may cause harmful interference to radio communications.

However, there is no guarantee that interference will not occur in a particular installation. If this equipment does cause harmful interference to radio or television reception, which can be determined by turning the equipment off and on, the user is encouraged to try to correct the interference by one or more of the following measures:

- Reorient or relocate the receiving antenna.
- Increase the separation between the equipment and receiver.

- Connect the equipment into an outlet on a circuit different from that to which the receiver is connected.
- Consult the dealer or an experienced radio/TV technician for help.

IC WARNING

This device contains licence-exempt transmitter(s)/receiver(s) that comply with Innovation, Science and Economic Development

Canada's licence-exempt RSS(s). Operation is subject to the following two conditions:

- (1) This device may not cause interference; and
- (2) This device must accept any interference, including interference that may cause undesired operation of the device.

FCC/ IC Radiation Exposure Statement

This equipment complies with FCC and IC radiation exposure limits set forth for an uncontrolled environment. This equipment should be installed and operated with minimum distance 20 cm between the radiator & your body.

5150-5250 Mhz is restricted to indoor use only.



www.audiopro.com

Read More About This Manual & Download PDF:

Documents / Resources

A black and white product image of the Audio Pro A28 Wi-Fi Multiroom Bookshelf Speaker. The image shows the front of the speaker with two circular drivers and the Audio Pro logo at the bottom.	<p>audio pro A28 Wi-Fi Multiroom Bookshelf Speaker [pdf] User Manual A28 Wi-Fi Multiroom Bookshelf Speaker, A28, Wi-Fi Multiroom Bookshelf Speaker, Multiroom B ookshelf Speaker, Bookshelf Speaker, Speaker</p>
--	--

References

- [Audio Pro Control App - Audio Pro - Play Nice](#)
- [Home app - Apple](#)
- [Meet the Google Home app - Android - Chromecast Help](#)
- [Spotify - Connect](#)

- [**S** tify.com - This website is for sale! - tify Resources and Information.](#)
- [!\[\]\(54980f468084d4c3dd796db8f104e98e_img.jpg\) Play Nice - Audio Pro - Excellent Speakers and Sub Woofers](#)
- [!\[\]\(3b8ec94dac0690a0e69dec8bb0aaac08_img.jpg\) Service and Support - Audio Pro - Play Nice](#)
- [!\[\]\(d3c16304619ad6516d4f35dd0c325d20_img.jpg\) Third Party Licenses | Spotify for Developers](#)
- [User Manual](#)

[Manuals+](#), [Privacy Policy](#)

This website is an independent publication and is neither affiliated with nor endorsed by any of the trademark owners. The "Bluetooth®" word mark and logos are registered trademarks owned by Bluetooth SIG, Inc. The "Wi-Fi®" word mark and logos are registered trademarks owned by the Wi-Fi Alliance. Any use of these marks on this website does not imply any affiliation with or endorsement.