



AUDIO ENHANCEMENT DC-40928.01 CLAUDIA Device User Guide

[Home](#) » [AUDIO ENHANCEMENT](#) » AUDIO ENHANCEMENT DC-40928.01 CLAUDIA Device User Guide 

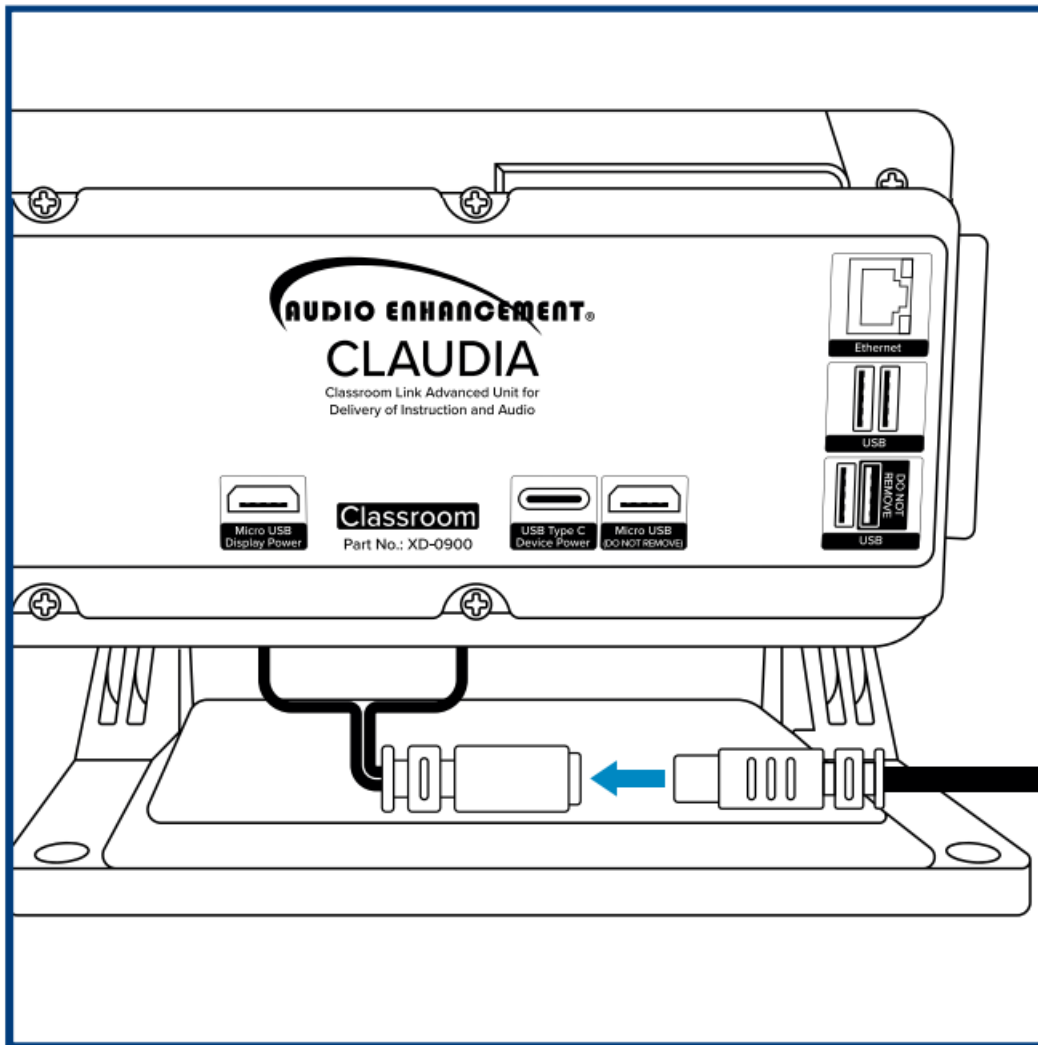


CLAUDIA Quick Start Guide

Contents

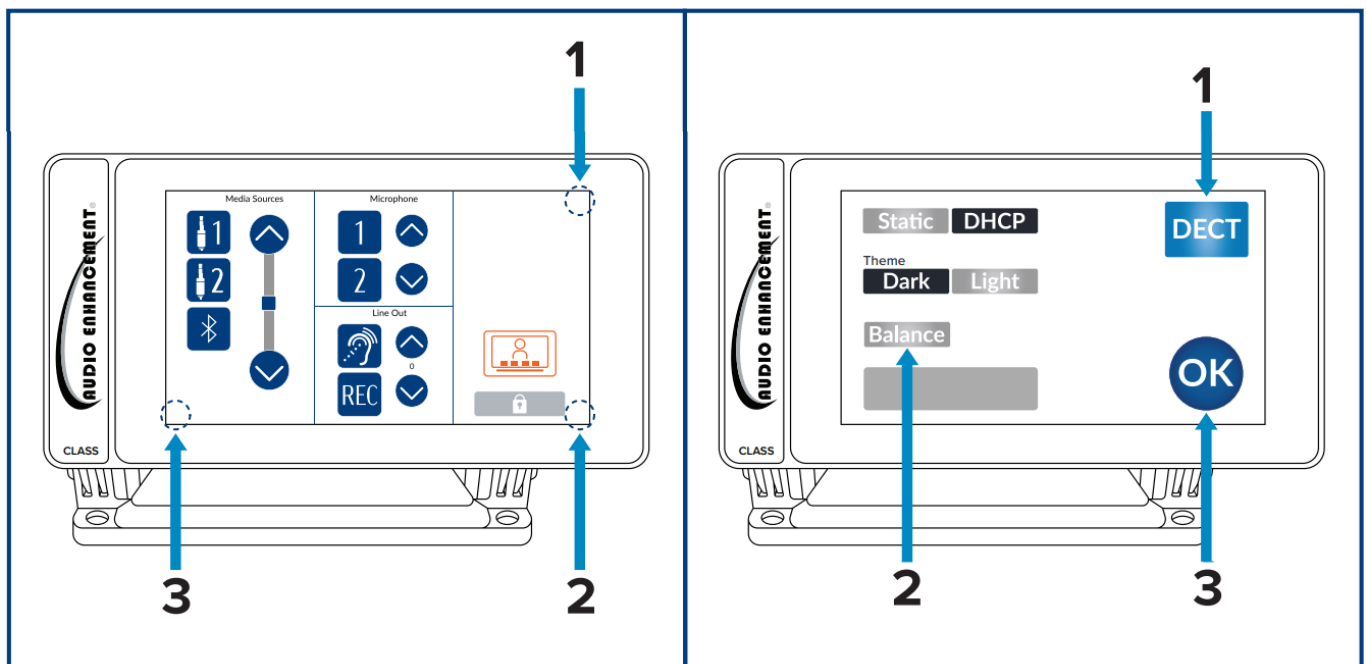
- [1 Connecting Power](#)
- [2 Pairing Instructions](#)
- [3 Documents / Resources](#)
 - [3.1 References](#)
- [4 Related Posts](#)

Connecting Power



Locate the USB-C input on the back of the CLAUDIA device and plug in the supplied USB-C Power Supply.

Pairing Instructions



The pairing process is done through the configuration screen. To access the configuration screen, press the corners of the screen in the order shown above.

Start the pairing process by ensuring 2 microphones are paired to the XD Receiver and powered on. Once channels 1 and 2 are in use, press the "DECT" button. The CLAUDIA device will pair and an audible beep will be heard. To complete the pairing process, press the "Balance" button. Audible beeps will be heard during the

balancing process. Note: This process can take several minutes. Once the beeps are no longer heard, the balance process has completed.

Press “OK” to return to the main screen.


**QR CODE GOES
HERE**

**CLAUDIA Manual
DC-40928.01**

www.AudioEnhancement.com

800.383.9362

Documents / Resources

	AUDIO ENHANCEMENT DC-40928.01 CLAUDIA Device [pdf] User Guide Quick Start Guide 5x7, Quick Start Guide, DC-40928.01, DC-40928.01 CLAUDIA Device, CLAUDIA Device, Device
---	--

References

- [Home - Audio Enhancement](#)