

BEAM All-In-One Classroom Audio Enhancement System User Guide

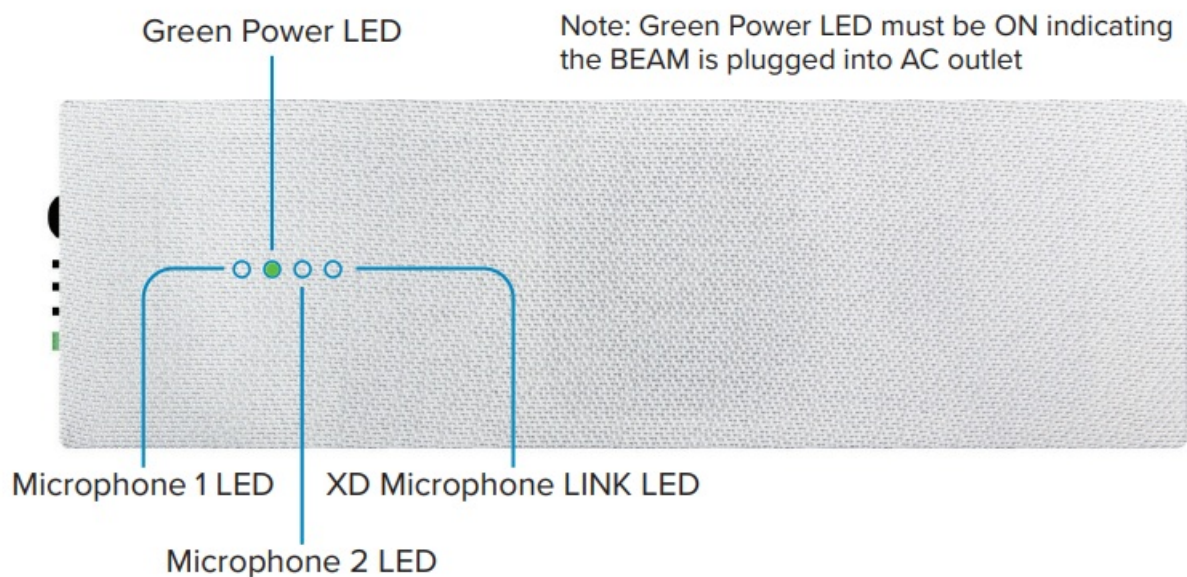
[Home](#) » [AUDIO ENHANCEMENT](#) » BEAM All-In-One Classroom Audio Enhancement System User Guide 



BEAM Quick Start Guide

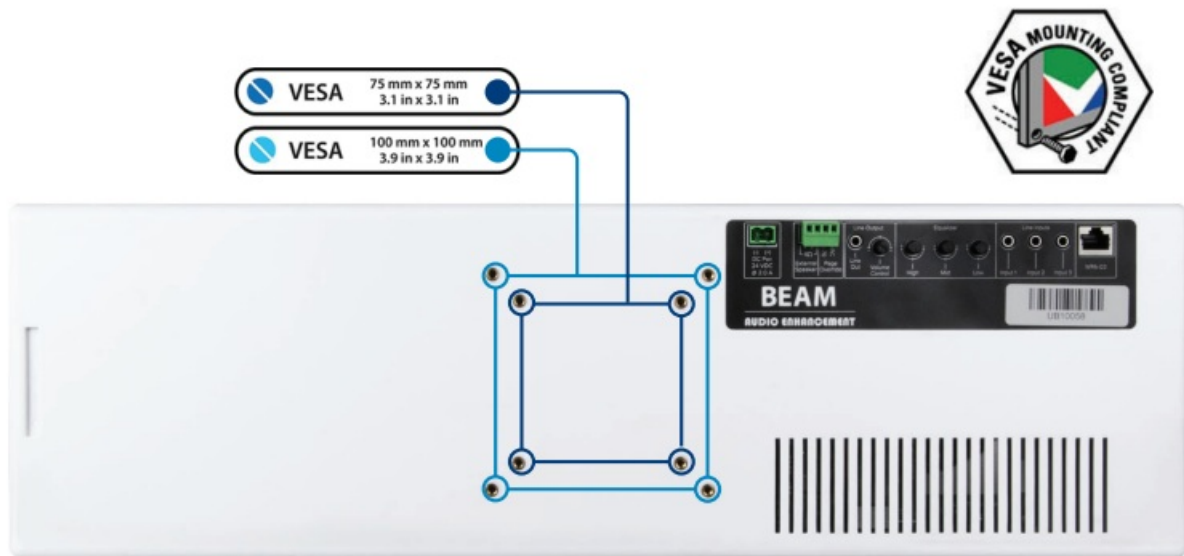
BEAM Front

BEAM LED Status Indicators visible through the front grille



BEAM Rear

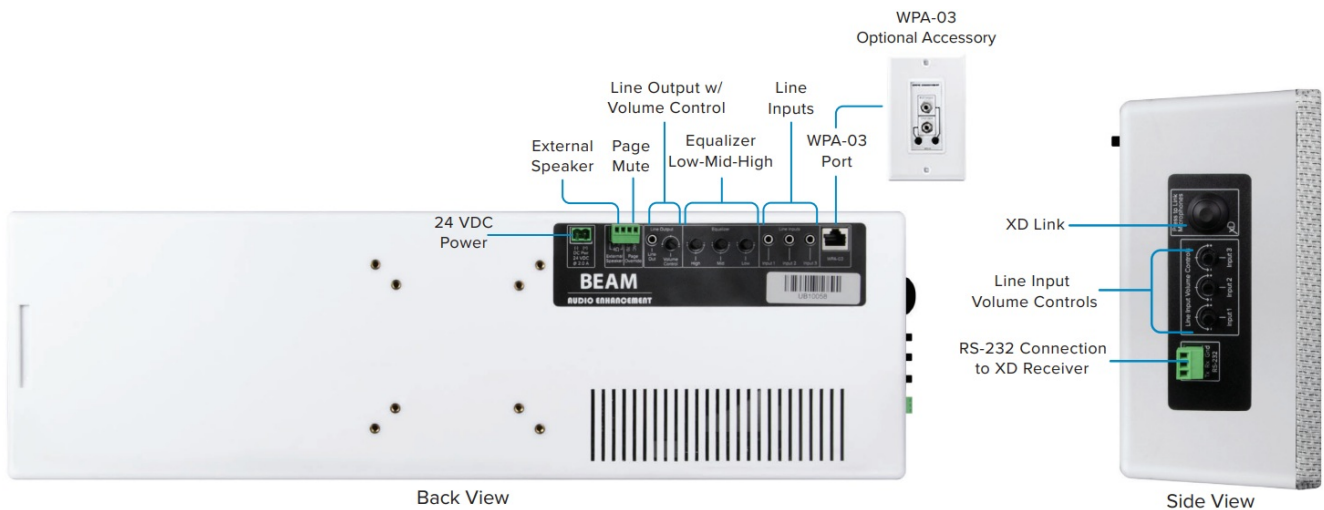
Optional Wall Mount Attachment Points



Contents

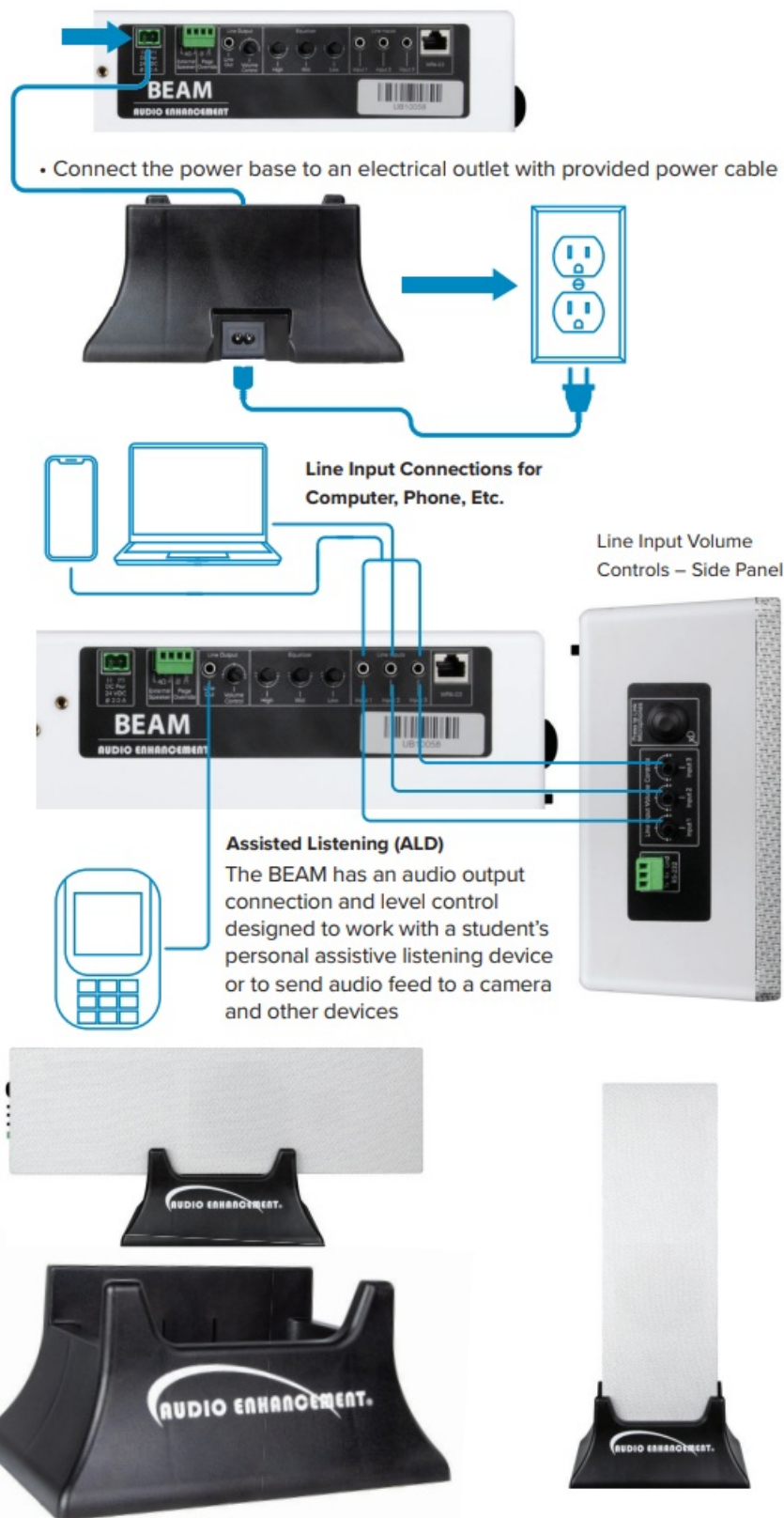
- 1 Inputs and Controls
- 2 Documents / Resources
 - 2.1 References
- 3 Related Posts

Inputs and Controls



Install BEAM into Power Base

- The BEAM Can be used vertically or horizontally in the power base
- Insert the BEAM
- Plug the power connection from the base into the back of the BEAM



Pairing Microphones to the BEAM

Check to see if your microphone is paired by turning on your Teacher/Lanyard and Handheld Microphones (Teacher/Lanyard Mic: press PWR for 1 second; Handheld Mic: flip TALK switch up). If the LED under the BATT indicator turns green, the mic is paired. If the LED blinks another color (orange), then turn off your microphones and use the following instructions to pair them to the BEAM.

Teacher/Lanyard Microphone Pairing

Turn mic off: press and hold PWR/MUTE until the green BATT light turns off.

Press and release the XD LINK button on the side of the BEAM.

Press and hold the PWR/MUTE and REC buttons simultaneously on the Teacher/ Lanyard Microphone until a

beep is heard from the BEAM.

Handheld Microphone Pairing

Turn mic off: flip the TALK switch down. The green BATT light will turn off.

Press and release the XD LINK button on the side of the BEAM.

Press and hold the PWR/LINK button and TALK pushbuttons simultaneously on the Handheld Microphone until a beep is heard from the BEAM.

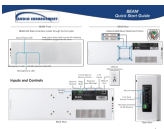


www.AudioEnhancement.com

800.383.9362

DC-40884.01

Documents / Resources

	<p>AUDIO ENHANCEMENT BEAM All-In-One Classroom Audio Enhancement System [pdf] User Guide</p> <p>BEAM, All-In-One Classroom Audio Enhancement System, BEAM All-In-One Classroom Audio Enhancement System</p>
-------------------------------------------------------------------------------------	-----------------------------------------------------------------------------------------------------------------------------------------------------------------------------------------------------------------------------

References

- [Audio Enhancement – More Effective Classrooms](#)