



Auckly AX 2BELV-AX Indicator Light User Guide

[Home](#) » [Auckly](#) » Auckly AX 2BELV-AX Indicator Light User Guide 

Contents

- [1 Auckly AX 2BELV-AX Indicator Light](#)
- [2 How to charge Properly?](#)
- [3 Guide](#)
- [4 Indicator Light Guide](#)
- [5 Documents / Resources](#)
 - [5.1 References](#)

Auckly

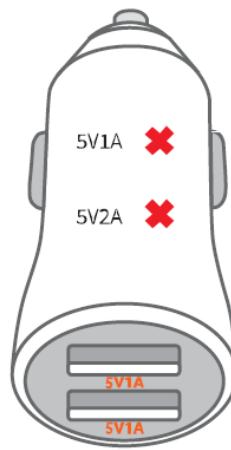
Auckly AX 2BELV-AX Indicator Light



How to charge Properly?

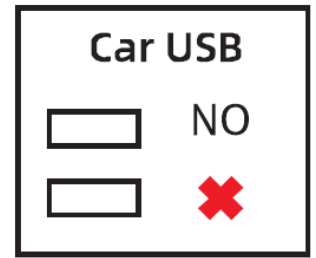


Fast charging



Unable to charge or slow to charge

or



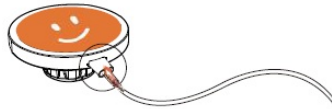
Guide

SCAN TO GET
SCAN TO GEHEN

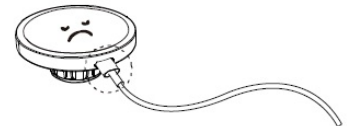
Lifetime Replacement
lebenslangen Ersatz und
Rückersatzung
AND
Mystery prize
Mystery-Preis



1. Always use the included USB cable



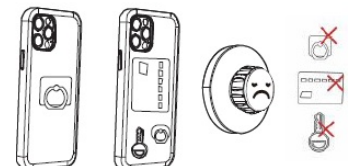
2. Other cables won't work well with me



1. MagSafe Case or Caseless



2. I can't charge properly
Ring Holder / Cards / Metal

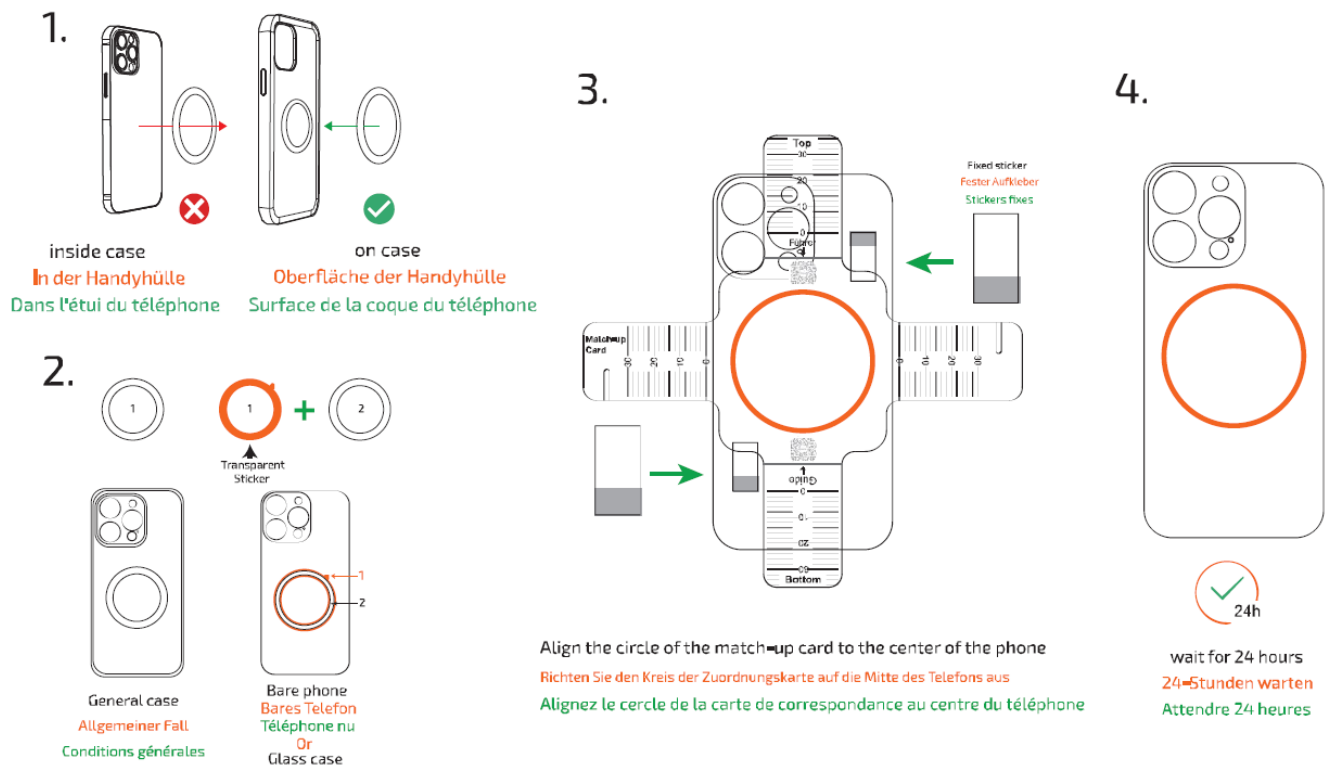


1. No problem with fast charging



2. it's too hot and won't charge well





Indicator Light Guide

| Charger Status | Plugged In | Standby | Charging/ Fully Charged | Error Detected |
|-----------------|------------|---------|----------------------------|----------------|
| Indicator Light | Breathing | On | Off | Flashing |

If an error is detected:

1. Check that your phone supports wireless charging and does not have any credit cards, stands, or other metal attachments on the back (other than the magnetic ring).
2. After checking the above, unplug and plug in the charging cable again to resume normal charging.

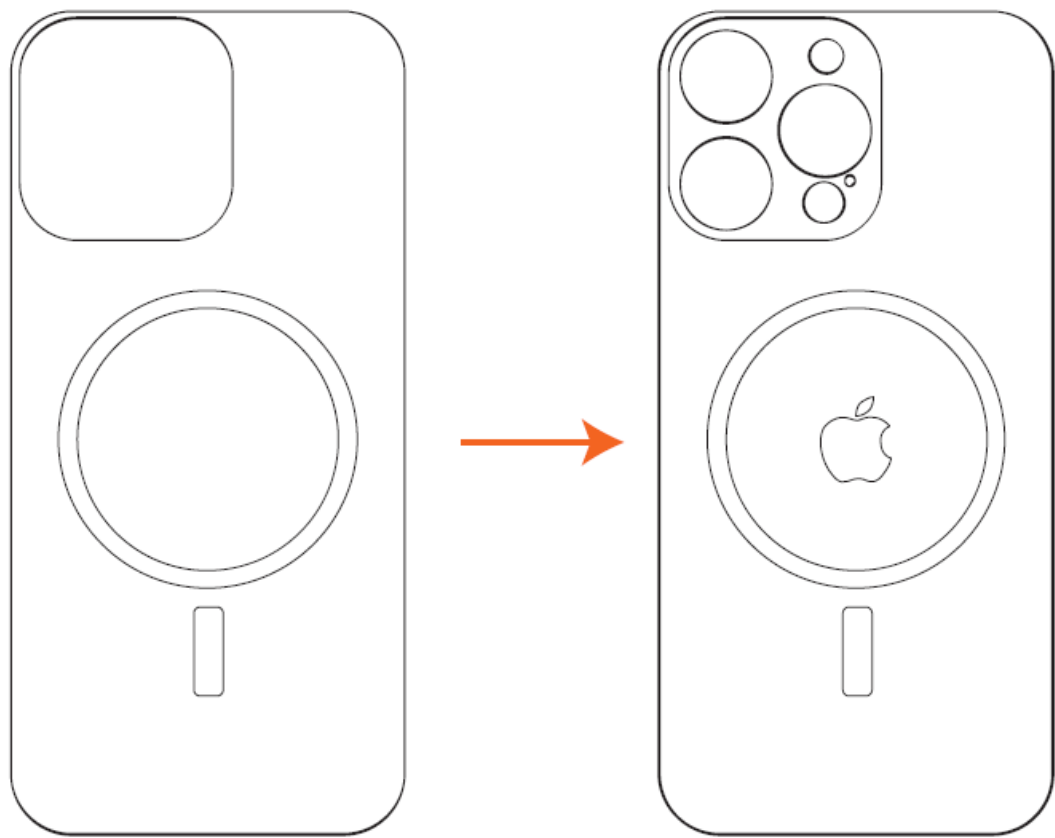
Important Reminders

1. Compatible with MagSafe-enabled iPhones and cases.
2. This charger supports an input of 9V=2A and outputs a maximum of 15W.
3. Only use the cable provided with the charger. An Apple cable or other third-party cable may interfere with charging.
4. This charger requires a charging adapter that supports OC or PD fast charging and an output of at least 18W.
5. Charger must be plugged into power supply to charge devices.

Safety Warnings


1. Do not place the device in temperatures below 0°C (32°F) or above 60°C (140°F).
2. Do not attempt to disassemble the device, expose it to an open flame, or submerge it in water to avoid damaging the device.

- 3. Always check for damage to the device, cables, or other accessories before using the device. If damaged, do not use the device.
- 4. Do not attempt to disassemble or modify the device in any way, as it may cause serious damage and void the warranty.
- 5. Do not expose the device to extremely hot, humid, or corrosive environments to avoid damaging the device.



The best experience is the Magsafe phone case

Documents / Resources

| | |
|---|---|
|  | Auckly AX 2BELV-AX Indicator Light [pdf] User Guide AX 2BELV, AX 2BELV-AX, AX 2BELV-AX Indicator Light, Indicator Light, Light |
|---|---|

References

- [User Manual](#)