



aube RC840T ON/OFF Switching Electric Heating Relay with Built In 24V Transformer Installation Guide

[Home](#) » [aube](#) » aube RC840T ON/OFF Switching Electric Heating Relay with Built In 24V Transformer Installation Guide 

Contents

- [1 aube RC840T ON/OFF Switching Electric Heating Relay with Built In 24V Transformer](#)
- [2 Application](#)
- [3 Installation](#)
- [4 Typical Wiring Diagrams](#)
- [5 Electrical Specifications](#)
- [6 RC840T Dimensions](#)
- [7 Warranty](#)
- [8 Documents / Resources](#)
 - [8.1 References](#)
- [9 Related Posts](#)



aube RC840T ON/OFF Switching Electric Heating Relay with Built In 24V Transformer



Application

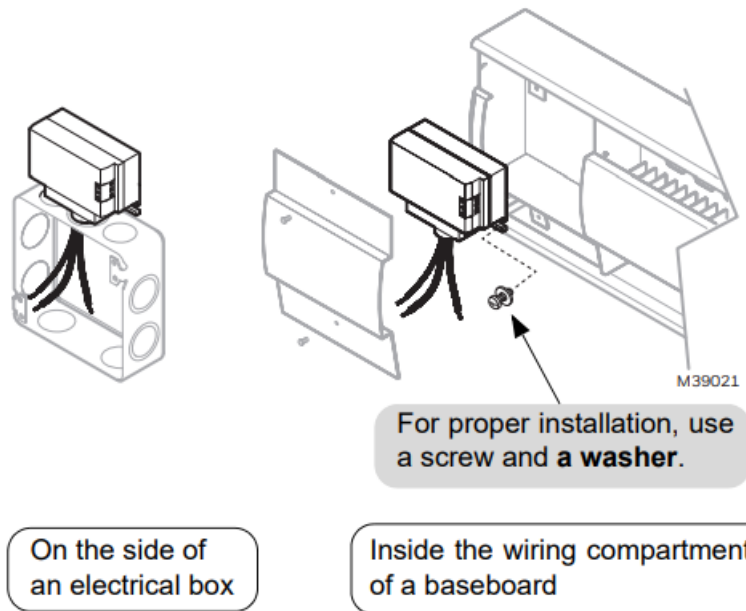
The RC840T Electric Heating Relay is designed to control a line voltage resistive load from a low voltage thermostat. The RC840T relay has a built-in 24 V transformer and is compatible with 3-wire (R,C,W) thermostats as well as 2-wire mechanical and battery-operated thermostats.

The RC840T operates silently and can be installed in bedrooms, living rooms, or any other occupied area without disturbing occupants. On a call for heat, the relay is immediately activated; there is no delay. This increases temperature control and comfort.

NOTE: Not recommended for fast-cycling modulated regulation. For fast-cycling heating equipment, It is recommended to use the RT850 or RT850T (integrated 24 V transformer) Solid State Relay.

Installation

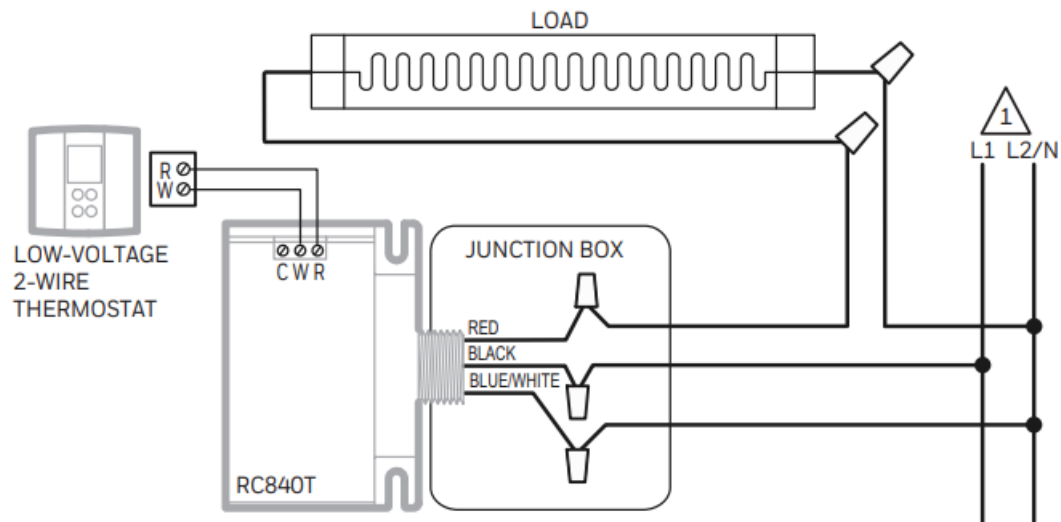
The RC840T must be installed in an area where the temperature is between -4°F and 140°F (-20°C and 60°C). The RC840T can be installed on the side of an electrical box or a distribution panel or inside the wiring compartment of an electric baseboard.



All wiring must comply with national and local electrical code regulations.
Installation should be carried out by an electrician.
Disconnect power supply before installing the relay to prevent electrical shock.

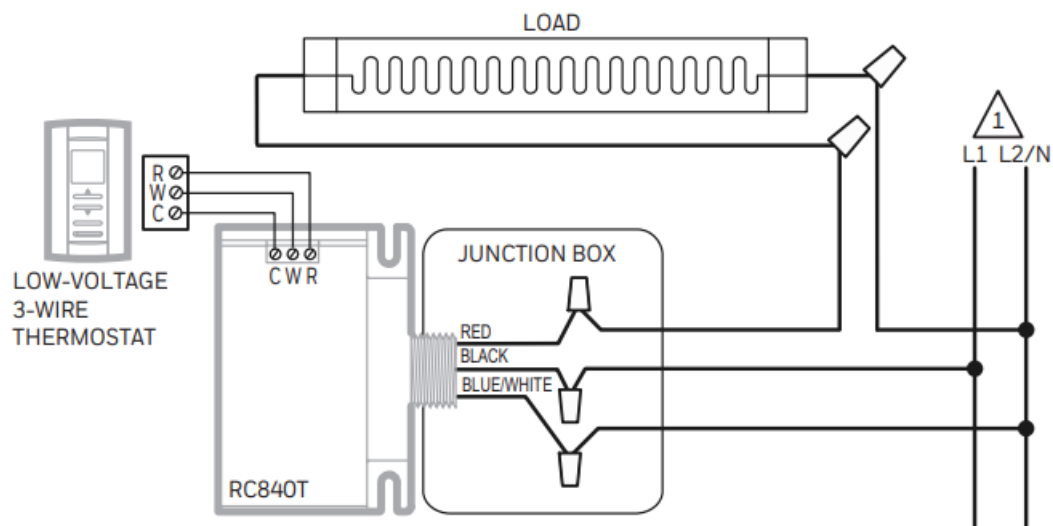
1. Secure relay to the mounting surface using the two mounting brackets. Use the supplied lock nut to secure the relay to the junction box.
2. Wire the relay and connect according to typical wiring diagrams (refer to figures 1 & 2).
3. Once mounting and wiring have been completed, return power to the heating system and test the installation.
4. Increase the thermostat temperature to activate the relay. Allow system operation long enough to proof installation. Once installation has been proofed, set temperature to normal setpoint.

Typical Wiring Diagrams



1 YOU MUST PROVIDE AN OVERLOAD PROTECTION AND DISCONNECT AS REQUIRED.

Figure 1 : Connection to a 2-wire low voltage thermostat



1 YOU MUST PROVIDE AN OVERLOAD PROTECTION AND DISCONNECT AS REQUIRED. M39023

Figure 2 : Connection to a 3-wire low voltage thermostat

Electrical Specifications

Ensure ratings are suitable for your application.

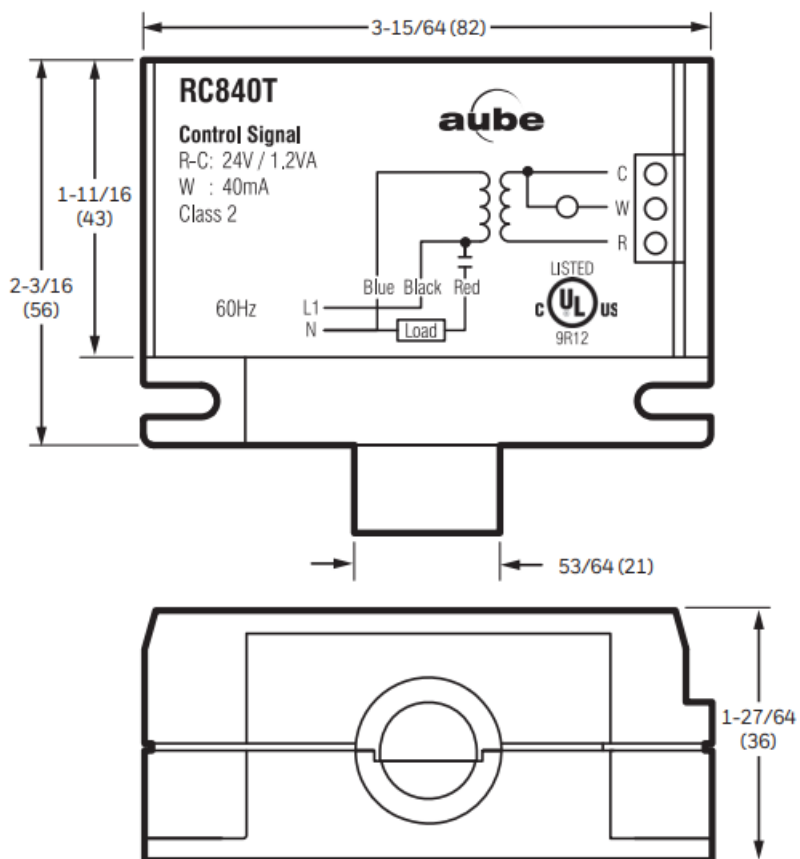
Models	RC840T-1 20	RC840T-240		RC840T-2 77	RC840T-3 47
Voltage (VAC)	120	208	240	277	347
Resistive load (A)	22	22	22	19	18
Inductive load (HP)	0.8	1.0	1.5		
FLA	16	13	12		
LRA	42				
Control signal	24 VAC / 40 mA / 1.2 VA				

- **Transformer ratings:** 24 VAC / 1.2 VA / Class 2
- **Ambient operating temperature:** -4°F to 140°F (-20°C to 60°C)
- **Ambient storage:** -40°F to 175°F (-40°C to 80°C)
- **Humidity limits:** 0 to 95% non-condensing
- **Net weight:** 11.5 oz. (326 g)
- **Terminal wire size:** 12 AWG



- **Certification:**

RC840T Dimensions



M39024

Dimensions are expressed in INCHES [MM]

Warranty

Resideo warrants this product, excluding battery, to be free from defects in workmanship or materials, under normal use and service, for a period of three (3) years from the date of first purchase by the original purchaser. If at any time during the warranty period the product is determined to be defective due to workmanship or materials, Resideo shall repair or replace it (at Resideo's option). If the product is defective,

1. return it, with a bill of sale or other dated proof of purchase, to the place from which you purchased it; or
2. call Resideo Customer Care at 1-800-468-1502. Customer Care will make the determination whether the product should be returned to the following address: Resideo Return Goods, 1985 Douglas Dr. N., Golden Valley, MN 55422, or whether a replacement product can be sent to you.

This warranty does not cover removal or reinstallation costs. This warranty shall not apply if it is shown by Resideo that the defect was caused by damage which occurred while the product was in the possession of a consumer.

Resideo's sole responsibility shall be to repair or replace the product within the terms stated above. RESIDEO SHALL NOT BE LIABLE FOR ANY LOSS OR DAMAGE OF ANY KIND, INCLUDING ANY INCIDENTAL OR CONSEQUENTIAL DAMAGES RESULTING, DIRECTLY OR INDIRECTLY, FROM ANY BREACH OF ANY WARRANTY, EXPRESS OR IMPLIED, OR ANY OTHER FAILURE OF THIS PRODUCT.

Some states do not allow the exclusion or limitation of incidental or consequential damages, so this limitation may not apply to you. THIS WARRANTY IS THE ONLY EXPRESS WARRANTY RESIDEO MAKES ON THIS PRODUCT. THE DURATION OF ANY IMPLIED WARRANTIES, INCLUDING THE WARRANTIES OF MERCHANTABILITY AND FITNESS FOR A PARTICULAR PURPOSE, IS HEREBY LIMITED TO THE ONE/THREE/FIVE YEAR DURATION OF THIS WARRANTY. Some states do not allow limitations on how long an implied warranty lasts, so the above limitation may not apply to you.

This warranty gives you specific legal rights, and you may have other rights which vary from state to state. If you have any questions concerning this warranty, please write Resideo Customer Care, 1985 Douglas Dr, Golden Valley, MN 55422 or call 1-800-468-1502.

Customer Assistance

1985 Douglas Dr,
Golden Valley, MN 55422 or call 1-800-468-1502.

Resideo Technologies, Inc.

1985 Douglas Drive North, Golden Valley, MN 55422

www.resideo.com

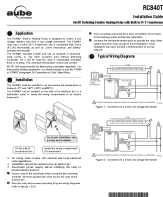
1-800-468-1502

69-2562EF—05 M.S. Rev. 08-22 | Printed in United States

© 2022 Resideo Technologies, Inc. All rights reserved.

This product is manufactured by Resideo Technologies, Inc. and its affiliates.

Documents / Resources

	<p>aube RC840T ON/OFF Switching Electric Heating Relay with Built In 24V Transformer [pdf]</p> <p>f] Installation Guide</p> <p>RC840T ON OFF Switching Electric Heating Relay with Built In 24V Transformer, RC840T, ON OFF Switching Electric Heating Relay, ON OFF Switching Electric Heating Relay with Built In 24V Transformer, ON OFF Switching Heating Relay, Electric Heating Relay, Heating Relay, Relay</p>
---	---

References

-  [Smart Home Products and Systems | Resideo](#)

Manuals+.