



## aube technologies AC146-410 Temperature Sensor User Manual

[Home](#) » [aube technologies](#) » aube technologies AC146-410 Temperature Sensor User Manual 

aube technologies AC146-410 Temperature Sensor User Manual



### Contents

- [1 Introduction](#)
- [2 Installation](#)
- [3 Warranty](#)
- [4 Resistance Curve](#)
- [5 Documents / Resources](#)
  - [5.1 References](#)
- [6 Related Posts](#)

## Introduction

The AC146-410 sensor is designed to be used with Aube thermostats and controllers to measure the temperature inside an air duct or air chamber. It can be also used in various other applications.

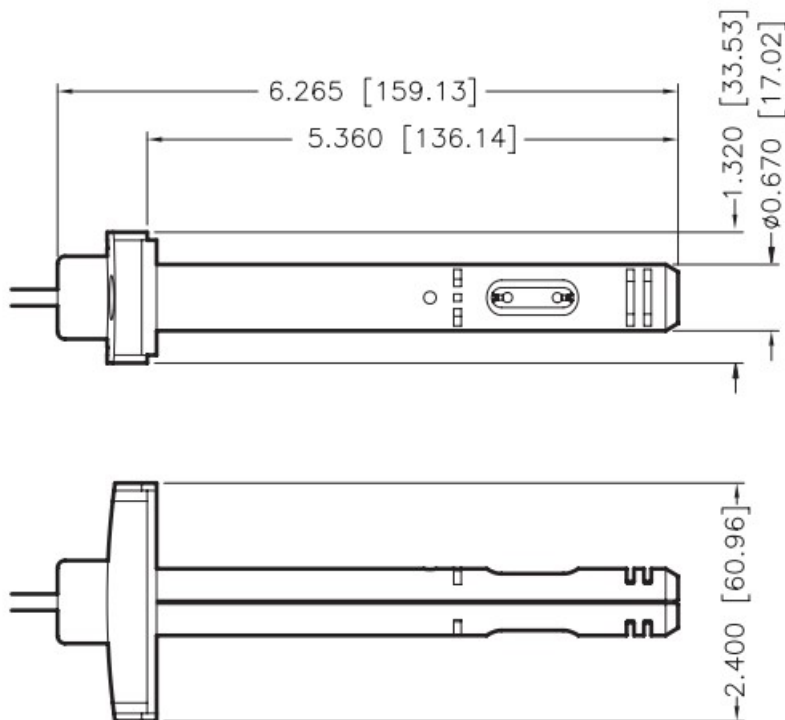
## Technical Specifications

Temperature range: -70 to 120°C (-94 to 248°F) Output signal: resistive Sensing device: thermistor (10 kΩ @ 25°C or 77°F) Cable length: 3 m (10 ft)

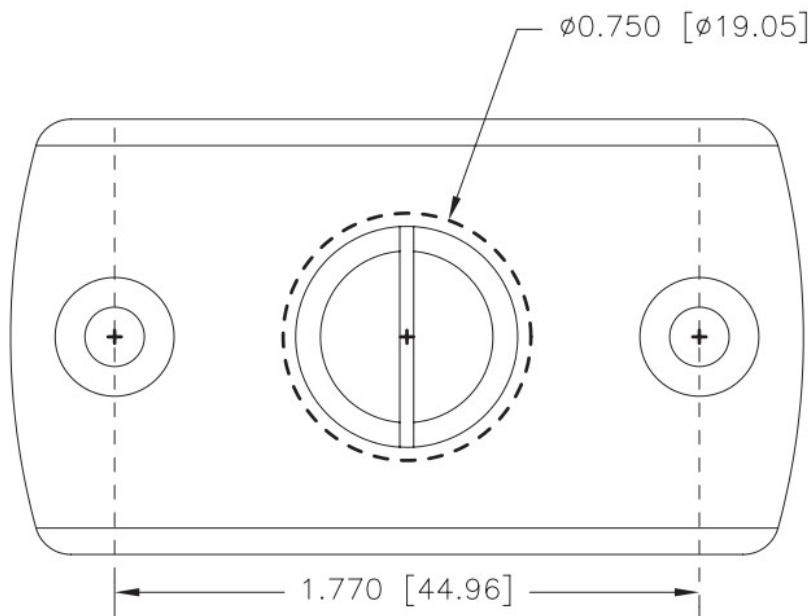
## Installation

- Use twisted pair cable for the sensor connection.
  - The maximum allowable distance between the sensor and Aube's controller is 50 feet (15 m).
  - The sensor must be installed so the reading hole is facing the air flow direction.
1. Drill a 19-mm (0.75-in.) hole for inserting the sensor.
  2. Install the sensor using # 12 self-tapping screws.
  3. Wire the sensor to the controller (no polarity).

**NOTE:** Do not submerge in liquid.



**NOTE:** Dimensions are expressed in INCHES [MM]



## Warranty

AUBE TECHNOLOGIES INC. ONE (1) YEAR LIMITED WARRANTY This product is guaranteed against workmanship defects for a one-year period following the initial date of purchase. During this period, AUBE Technologies Inc. will repair or replace, at our option and without charge, any defective product which has been used under normal conditions.

The warranty does not cover delivery costs and does not apply to products poorly installed or randomly damaged following installation. This warranty cancels and replaces any other manufacturer's express or implied warranty as well as any other company commitment.

AUBE Technologies Inc. cannot be held liable for related or random damages following the installation of this product.

The defective product as well as the purchase invoice must be returned to the place of purchase or mailed, prepaid and insured, to the following address:



705 Montrichard  
Saint-Jean-sur-Richelieu, Quebec  
J2X 5K8

Canada  
**Tel.:** (450) 358-4600  
1-800-831-AUBE (2823)  
**Fax:** (450) 358-4650  
[service@aubetech.com](mailto:service@aubetech.com)



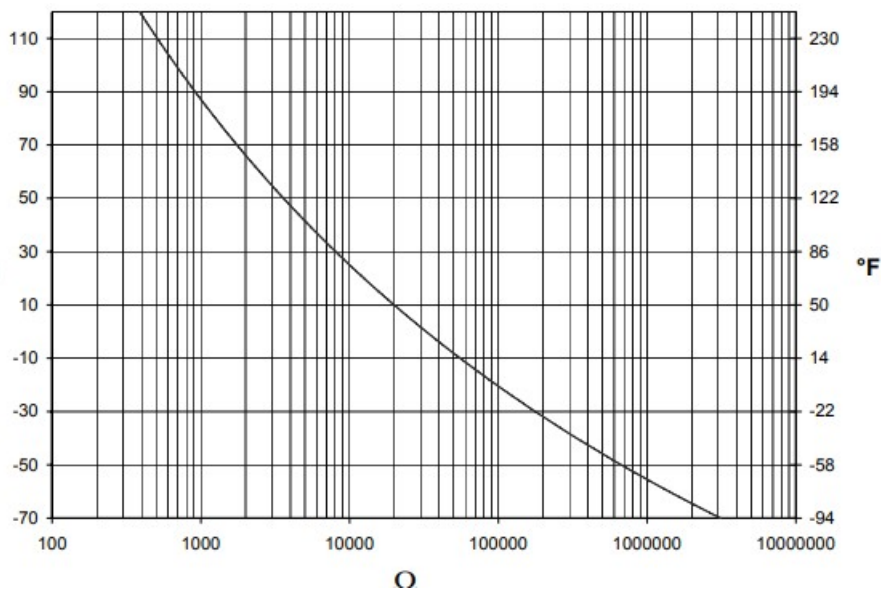
10 rue Ampère  
95500 Gonesse  
France

Tel. : 33 (0) 1 34 07 99 00  
Fax : 33 (0) 1 34 07 99 19  
[advaube@comintes.com](mailto:advaube@comintes.com)

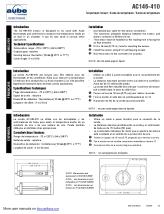
For more information on our products, visit us at: [www.aubetech.com](http://www.aubetech.com)

## Resistance Curve

°C	W	°F	°C	W	°F
120	388	248	20	12 493	68
115	444	239	15	15 714	59
110	510	230	10	19 903	50
105	587	221	5	25 395	41
100	678	212	0	32 651	32
95	787	203	-5	42 317	23
90	916	194	-10	55 304	14
85	1 070	185	-15	72 911	5
80	1 256	176	-20	97 007	-4
75	1 480	167	-25	130 308	-13
70	1 752	158	-30	176 805	-22
65	2 082	149	-35	242 430	-31
60	2 487	140	-40	336 103	-40
55	2 985	131	-45	471 401	-49
50	3 601	122	-50	669 262	-58
45	4 367	113	-55	962 410	-67
40	5 325	104	-60	1 402 728	-76
35	6 530	95	-65	2 073 705	-85
30	8 056	86	-70	3 111 810	-94
25	10 000	77			



Documents / Resources



[aube technologies AC146-410 Temperature Sensor \[pdf\] User Manual](#)  
AC146-410 Temperature Sensor, AC146-410, Temperature Sensor, Sensor

References

- [User manuals for your devices. - ManualsBase.com - Solve your problem](#)
- [User manuals for your devices. - ManualsBase.com - Solve your problem](#)