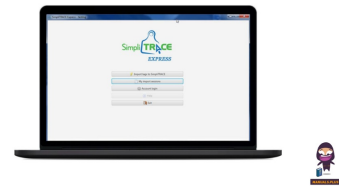


Attestra
SimpliTRACE Express
Tutorial Software



Attestra SimpliTRACE Express Tutorial Software User Guide

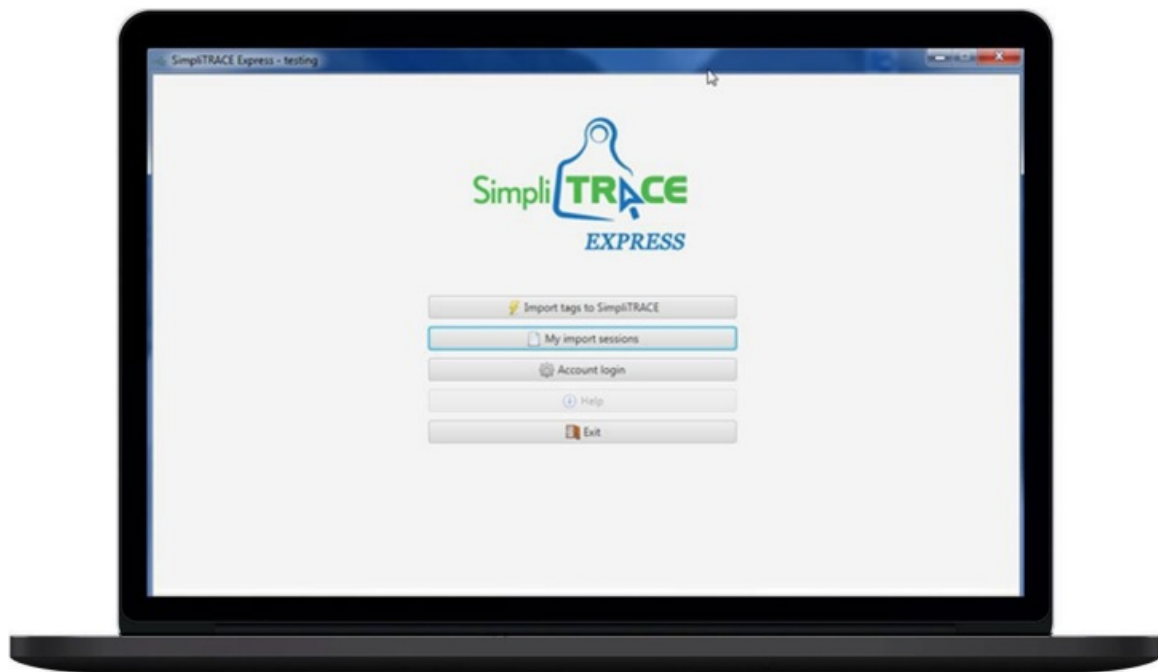
[Home](#) » [Attestra](#) » Attestra SimpliTRACE Express Tutorial Software User Guide 

Contents

- [1 Attestra SimpliTRACE Express Tutorial Software](#)
- [2 Product Information](#)
- [3 Product Usage Instructions](#)
- [4 FAQ](#)
- [5 User Guide Content](#)
- [6 Using SimpliTRACE Express](#)
- [7 Downloading and Installing SimpliTRACE Express](#)
- [8 First log in to SimpliTRACE Express](#)
- [9 Using the Data from the Stick Reader in your SimpliTRACE Account](#)
- [10 CONTACT](#)
- [11 Documents / Resources](#)
 - [11.1 References](#)



Attestra SimpliTRACE Express Tutorial Software



Product Information

Specifications

- **Product Name:** SimpliTRACE Express
- **Function:** Free application for importing data to your computer (PC)
- **Release Date:** April 25, 2024

Product Usage Instructions

To use the SimpliTRACE Express application, follow these steps:

- Ensure you have internet access and are registered with SimpliTRACE.
- Contact Attestra's Customer Service if you are not registered to obtain access codes.
- During registration, use a valid email address.
- Download the application from the Attestra website.
- Follow the installation procedure provided on the website.
- If the downloaded file is compressed, ensure you have decompression software installed.
- After installation, log in using your Username and Password. Follow these steps:

You can access your account settings at any time by clicking on the My Import Sessions menu.

FAQ

- **Q:** What should I do if I forget my SimpliTRACE account credentials?
- **A:** If you forget your Username or Password, contact Attestra's Customer Service for assistance.
- **Q:** Can multiple users access the SimpliTRACE Express account?
- **A:** Yes, other users can access the account by clicking on the My Import Sessions menu.

User Guide Content

- This user guide explains the various features of the SimpliTRACE Express application. This data import application is a complementary tool that works with SimpliTRACE and is compatible with the RFID electronic stick readers supported by Attestra.
- The SimpliTRACE Express application was designed by Attestra to permanently replace the FormCLIC software. With this application, users can import data recorded with a stick reader into
- SimpliTRACE and therefore produce their declarations more easily.
- Information is provided throughout the guide to help you use the SimpliTRACE Express application. We strongly suggest that you refer to the guide when needed. The two following pictograms will draw your attention to important advice and information.
 - The “electric lightbulb” indicates that a tip is available at this point in the guide;
 - The “exclamation mark” indicates that the information is important.
- For technical assistance, please contact Attestra’s Customer Service at:

Attestra’s Technical Support

- Monday to Friday
- From 8:30 a.m. to 12:00 p.m. and 1:00 p.m. to 4:30 p.m. (except public holidays)
- Tel: [450-677-1757](tel:450-677-1757)
- Toll-free tel.: 1-[866-270-4319](tel:866-270-4319) Email: sac@attestra.com

Using SimpliTRACE Express

- To use the SimpliTRACE Express application, you must have access to the Internet and be registered with
- SimpliTRACE. You must also have on hand your username and password for your SimpliTRACE account.
- If you are not yet registered with SimpliTRACE, contact Attestra’s Customer Service and an agent will help you with the required access codes. During registration, it is recommended that you use a valid email address.

Attestra’s Customer Service

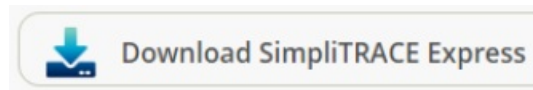
- Monday to Friday
- From 8:30 a.m. to 12:00 p.m. and 1:00 p.m. to 4:30 p.m. (except public holidays)
- Tel: [450-677-1757](tel:450-677-1757) #1
- Toll-free tel.: 1-[866-270-4319](tel:866-270-4319) #1 Email: sac@attestra.com

Please note that a valid email address is recommended to obtain a username and password for your SimpliTRACE account. In addition, this information is confidential so we suggest that you do not reveal it to anyone else.

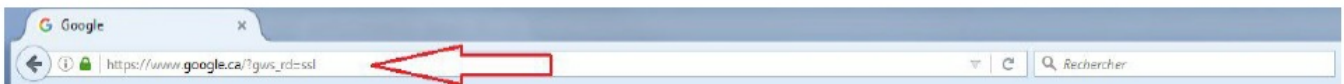
Downloading and Installing SimpliTRACE Express

- The SimpliTRACE Express application must be downloaded from the Attestra website. After downloading, a short installation procedure must be followed.
- To download the SimpliTRACE Express application and consult the installation procedure, go to the following

address, <https://attestra.com/en/traceability/livestock/technological-tools/> and click on the download button.



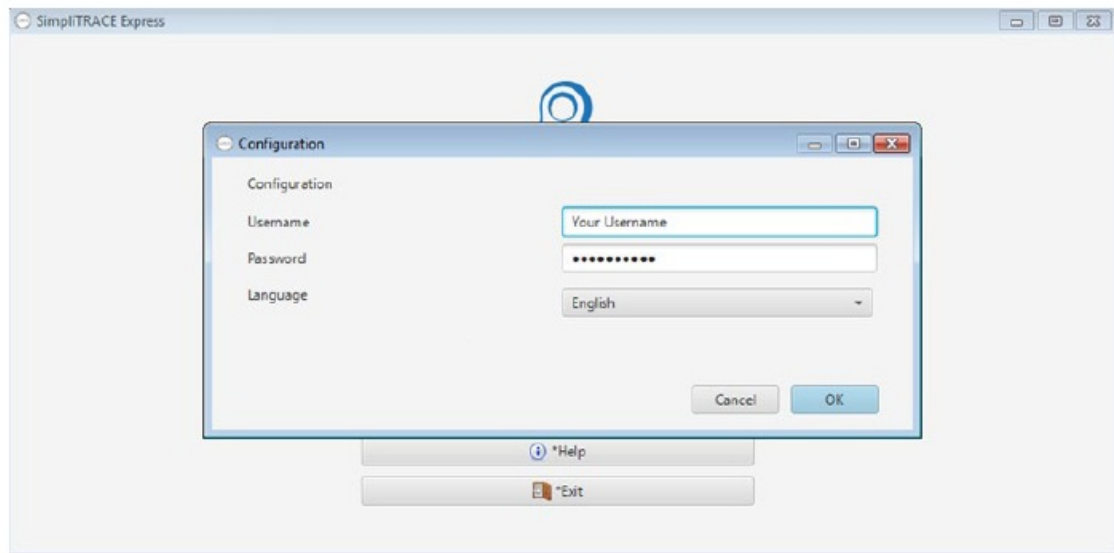
- The downloaded file will be compressed. If your computer doesn't have decompression software, we advise you to download one from the Internet and install it on your computer.
- You can enter the above URL in the web browser of your choice (Internet Explorer, Firefox, Google Chrome, etc.).




First log in to SimpliTRACE Express

- Following the installation of SimpliTRACE Express, you must enter your "Username" and "Password", which you chose when creating your account with SimpliTRACE, in the appropriate fields in the following dialog box.
- This page will also enable you to select the display language for the software. Note that there will be no need to enter this information again the next time you access your account.

Figure 1: Access Page

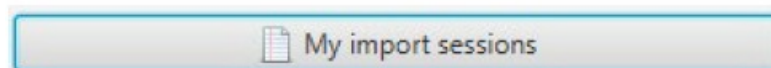


Information Fields in the Form:

- **Username:** Enter your username for the SimpliTRACE application.
- **Password:** Enter your password for the SimpliTRACE application.
- **Language:** The software's display language will appear. To select another language, click on the language of your choice in the drop-down menu.
- **Click** on the  button.

Note that you can view your account settings at any time by clicking on the My Import Sessions menu. This link also enables other users to access their accounts.

Figure 2: Accessing Your Account Settings

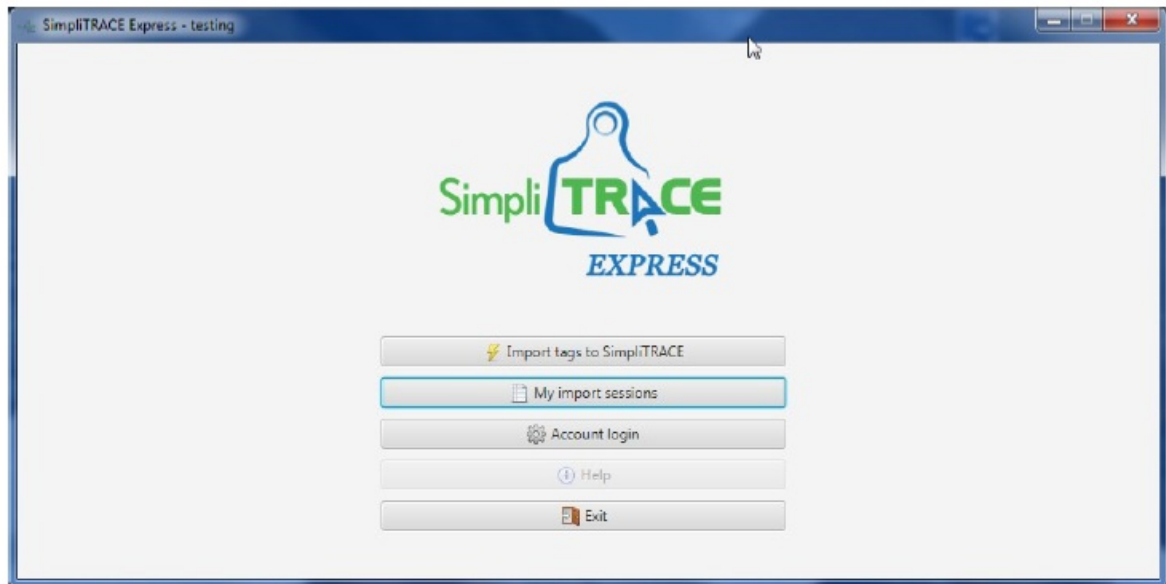


- To ensure confidentiality and secure access to SimpliTRACE, the information fields for the username and password are case-sensitive, which means that these fields are programmed to distinguish between the different characters that you enter.
- If you do not enter the correct username or password, an error message will appear on the screen. If you receive this error message after several attempts, ensure that the Caps Lock key is not activated or contact Attestra's Customer Service.

SimpliTRACE Express Home Page

The SimpliTRACE Express home page is comprised of 5 menus. These menus give access to the software's specific features. The function of each menu is explained in detail in the following sections of the user guide.

Figure 3: Homepage

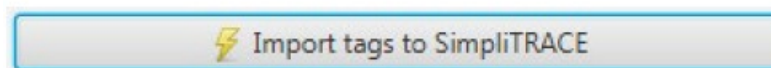


- Import tags to SimpliTRACE | Section 5.1 Section 5.1
- My import sessions | Section 5.2
- Account login | Section 5.3
- Help | Section 5.4
- Exit | Section 5.5

Importing Tags to SimpliTRACE

Import tags to SimpliTRACE allow you to import the tags you have read with your stick reader.

Figure 4: Import tags to *SimpliTRACE* menu



- When you choose OK in the SimpliTRACE and SimpliTRACE Express applications, this confirms your choice and takes you to the next step. If you choose Cancel, you will be directed to the previous window.

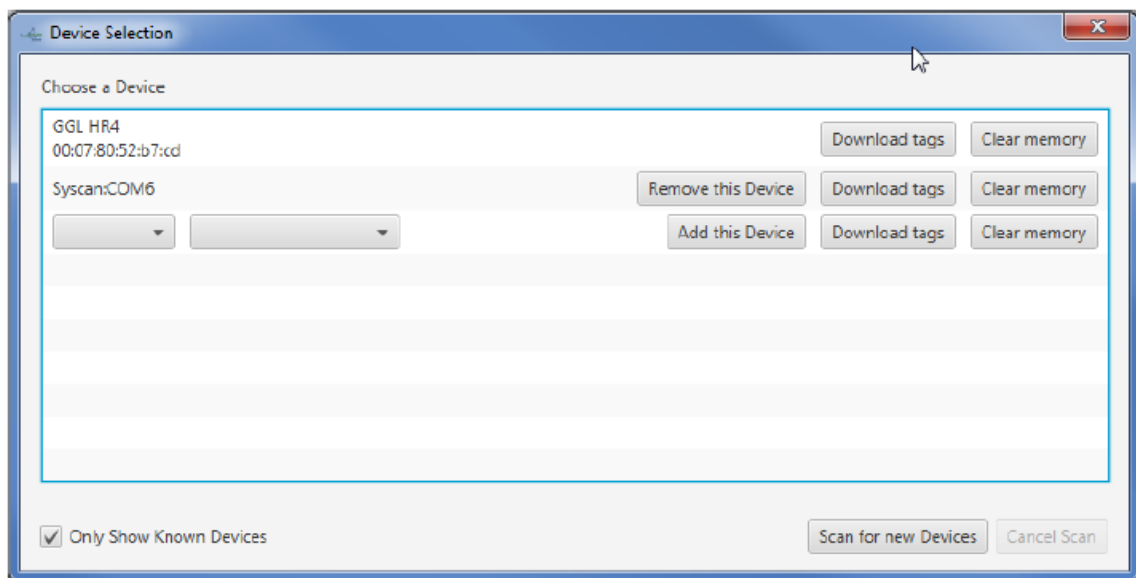
Stick Reader Selection

- This interface provides you access to various features and allows you to establish a connection between the SimpliTRACE Express application and your stick reader.

Bluetooth (wireless)

If your stick reader can connect to your computer via Bluetooth, you must click on Search for New Stick Readers. It will appear in the list, and you must select the Download tags button to capture the identifier numbers that are recorded in the reader.

Figure 5: Stick reader selection (Bluetooth)

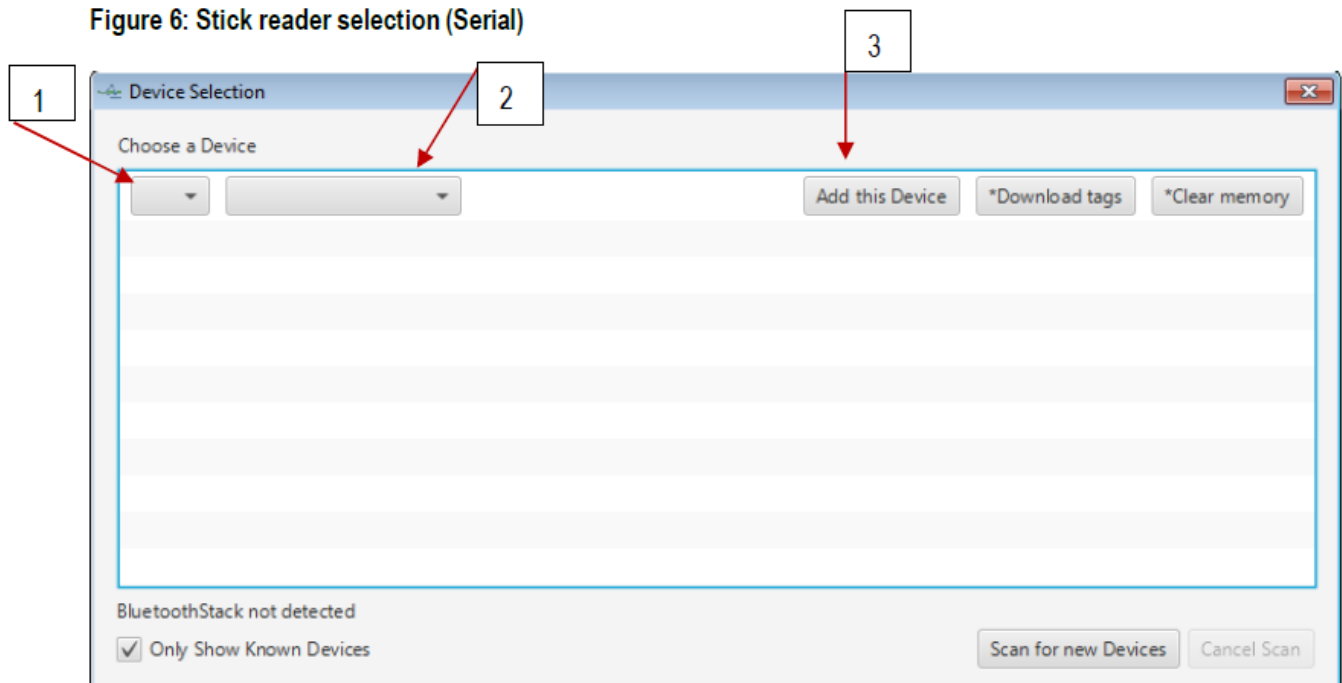


Serial connector (wired)

If your stick reader connects to your computer using a data transfer cable, you must complete the following three steps:

1. In the 1st drop-down list, select the connection port;
2. In the 2nd drop-down list, select the make of your stick reader;
3. Click on Add this device.

Figure 6: Stick reader selection (Serial)



Downloading the Numbers from the Stick Reader to SimpliTRACE

- When you click on the Download tags button, several message windows will appear. You must read each message and indicate your choice.
- You can download the numbers and either delete or keep the contents on the sticker reader.

Figure 7: Downloading the numbers from the stick reader

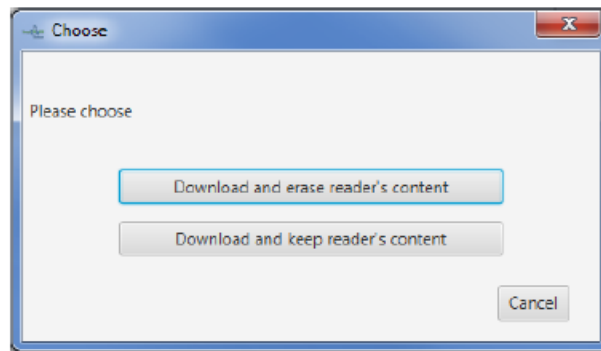


Figure 8: Select your "Stakeholder number"

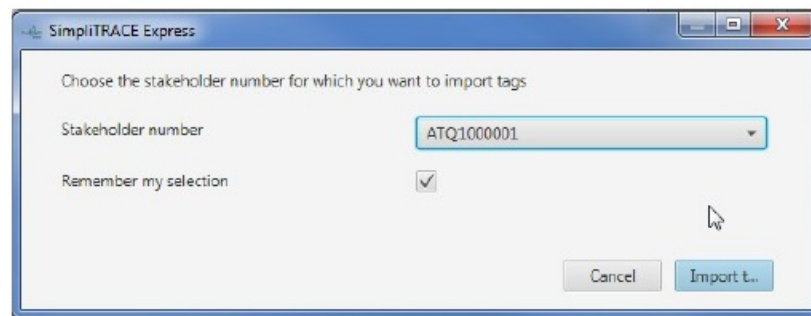


Figure 9: Ensure that the reader is on

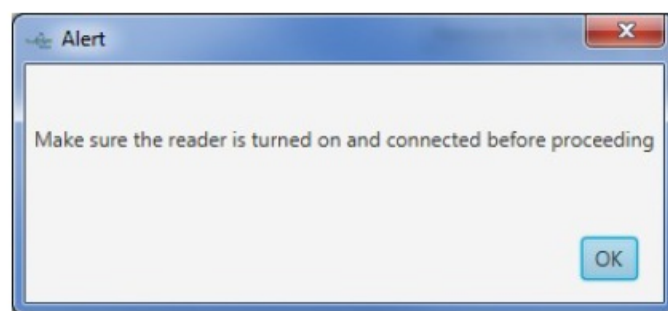


Figure 10: The number of identifiers transferred to SimpliTRACE will appear on the screen

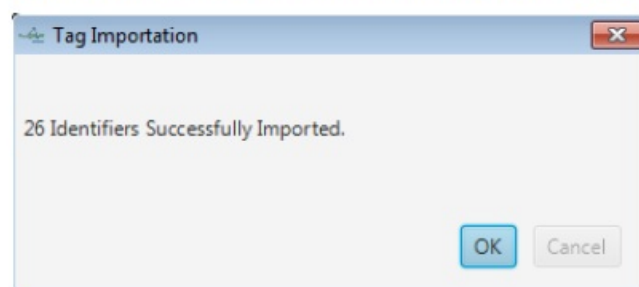
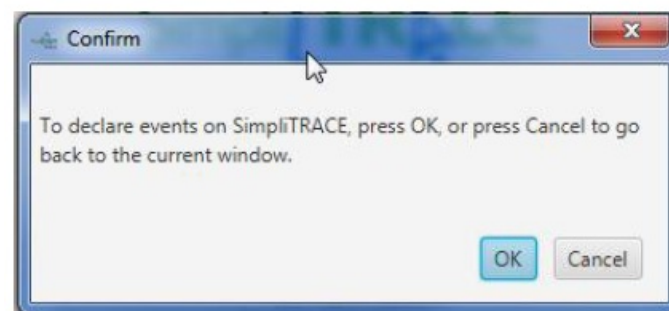


Figure 11: Confirmation of event declarations in SimpliTRACE

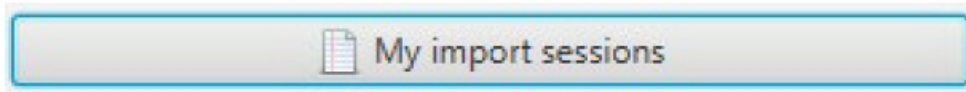


If you choose OK, you will be directed automatically to the SimpliTRACE application. If you click on Cancel, you will come back to the Home Page menu without the transfer being made.

Accessing My Import Sessions in SimpliTRACE

The My import sessions button provides you direct access to the data import sessions in your SimpliTRACE account and allows you to make declarations if required.

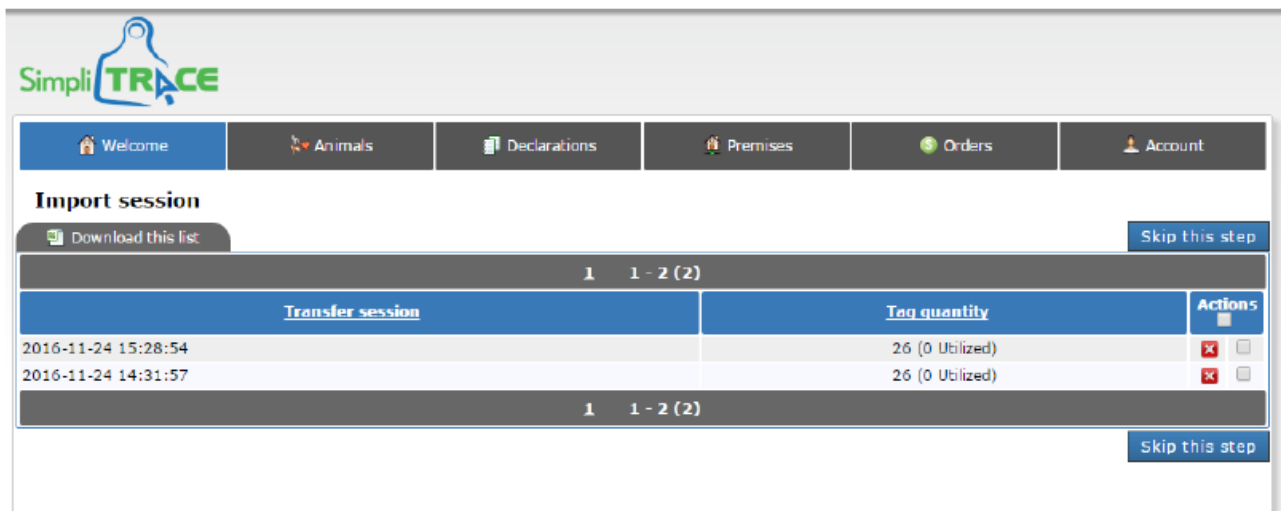
Figure 12: Accessing My import sessions in the *SimpliTRACE* menu



Note: You can access your import sessions at any time by logging in to your account in SimpliTRACE and by clicking on Tags imported from SimpliTRACE Express.

- <https://simplitrace.attestra.com/login?language=en>

Figure 13: *SimpliTRACE* login

The screenshot shows the SimpliTRACE web application interface. At the top is the SimpliTRACE logo. Below it is a navigation bar with buttons for 'Welcome', 'Animals', 'Declarations', 'Premises', 'Orders', and 'Account'. The 'Import session' section is active, showing a 'Download this list' button and a 'Skip this step' button. Below these is a table with two columns: 'Transfer session' and 'Tag quantity'. The table contains two rows of data. The first row shows a timestamp '2016-11-24 15:28:54' and a tag quantity of '26 (0 Utilized)'. The second row shows a timestamp '2016-11-24 14:31:57' and a tag quantity of '26 (0 Utilized)'. Each row has an 'Actions' column with a red 'X' icon and a checkbox. The table is paginated, showing '1' of '1 - 2 (2)' items. A 'Skip this step' button is also present at the bottom right of the table area.

Transfer session	Tag quantity	Actions
2016-11-24 15:28:54	26 (0 Utilized)	<input checked="" type="checkbox"/>
2016-11-24 14:31:57	26 (0 Utilized)	<input checked="" type="checkbox"/>

My Login Settings

The Account login button enables you to determine or modify your login settings for the application.

Figure 14: Account login menu

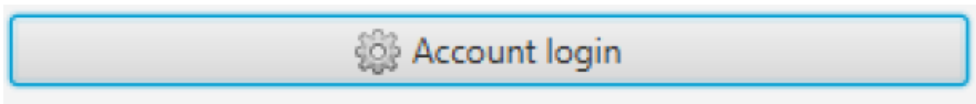
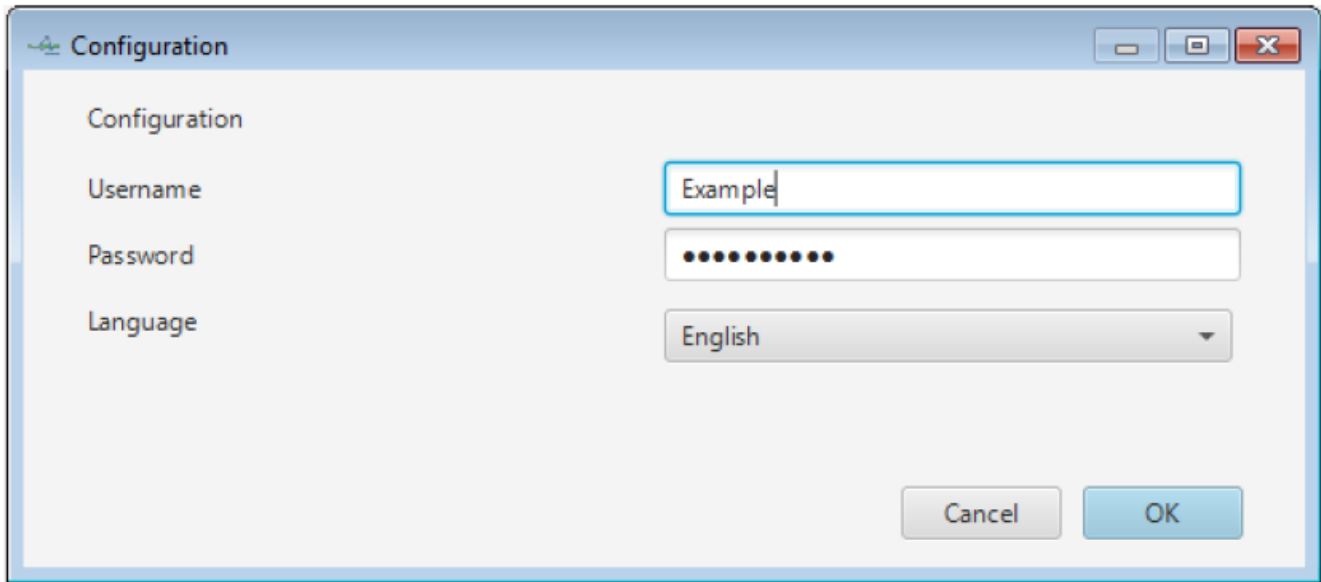


Figure 15: Login settings



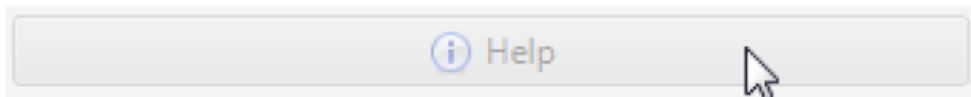
Help

The Help button in the SimpliTRACE Express application’s main menu is temporarily deactivated. For assistance, please contact a technical support agent:

Attestra’s Technical Support

- Monday to Friday
- From 8:30 a.m. to 12:00 p.m. and 1:00 p.m. to 4:30 p.m. (except public holidays)
- Tel: [450-677-1757](tel:450-677-1757)
- Toll-free tel.: 1-[866-270-4319](tel:866-270-4319) Email: sac@attestra.com

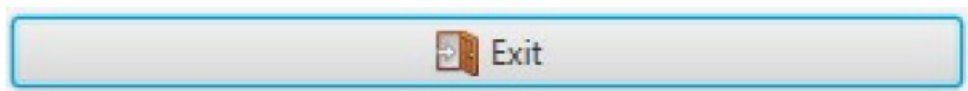
Figure 16: Help menu



Exiting the SimpliTRACE Express application

The Exit button enables you to safely exit the application. It is strongly recommended that you use this procedure.

Figure 17: Exit menu



Using the Data from the Stick Reader in your SimpliTRACE Account

Account Settings

To complete your declarations with the data downloaded from your stick reader, you have two options:

1. Standard declaration form;
2. Batch declaration form.

To select the type of declaration form you wish to use, please complete the following steps:

1. Go to the Account tab;
2. Select Standard or Batch in the Declaration Form Type drop-down menu;
3. Click on Save.

Figure 18 : Editing your preferences

1

2

3

Note that the application will register your choice for future logins. If you wish to modify the type of declaration form, you must change your settings again.

Accessing Tags Imported from SimpliTRACE Express to Make Declarations

To access your tags imported from SimpliTRACE Express, there are two possible options:

- On the Home Page of your account, click on the link Tags imported from SimpliTRACE Express;
- During a declaration, the Search my importation sessions link provides access to your imported tags.

Overview of the Standard Declaration Form

Note: The image may differ according to the type of event being recorded.


CONTACT

Attestra

- 555 Roland-Therrien Boulevard, Suite 050 Longueuil (Québec) J4H 4E8
- Telephone: [450-677-1757](tel:450-677-1757) – Toll free: 1-[866-270-4319](tel:866-270-4319)
- Fax: [450-679-6547](tel:450-679-6547) – Toll-free fax: 1-[866-473-4033](tel:866-473-4033)
- Website: www.attestra.com

Attestra reserves all property rights. Any full or partial reproduction, transmission by electronic or by any other means, modification, use for commercial purposes or public release are prohibited without the prior written consent of Attestra.

Documents / Resources

	<p>Attestra SimpliTRACE Express Tutorial Software [pdf] User Guide SimpliTRACE Express Tutorial Software, Express Tutorial Software, Tutorial Software, Software</p>
---	--

References

- [🔗 Log in - SimpliTrace](#)
- [User Manual](#)

Manuals+, Privacy Policy

This website is an independent publication and is neither affiliated with nor endorsed by any of the trademark owners. The "Bluetooth®" word mark and logos are registered trademarks owned by Bluetooth SIG, Inc. The "Wi-Fi®" word mark and logos are registered trademarks owned by the Wi-Fi Alliance. Any use of these marks on this website does not imply any affiliation with or endorsement.