

Attestra Simplitrace Express On Your Computer User Guide

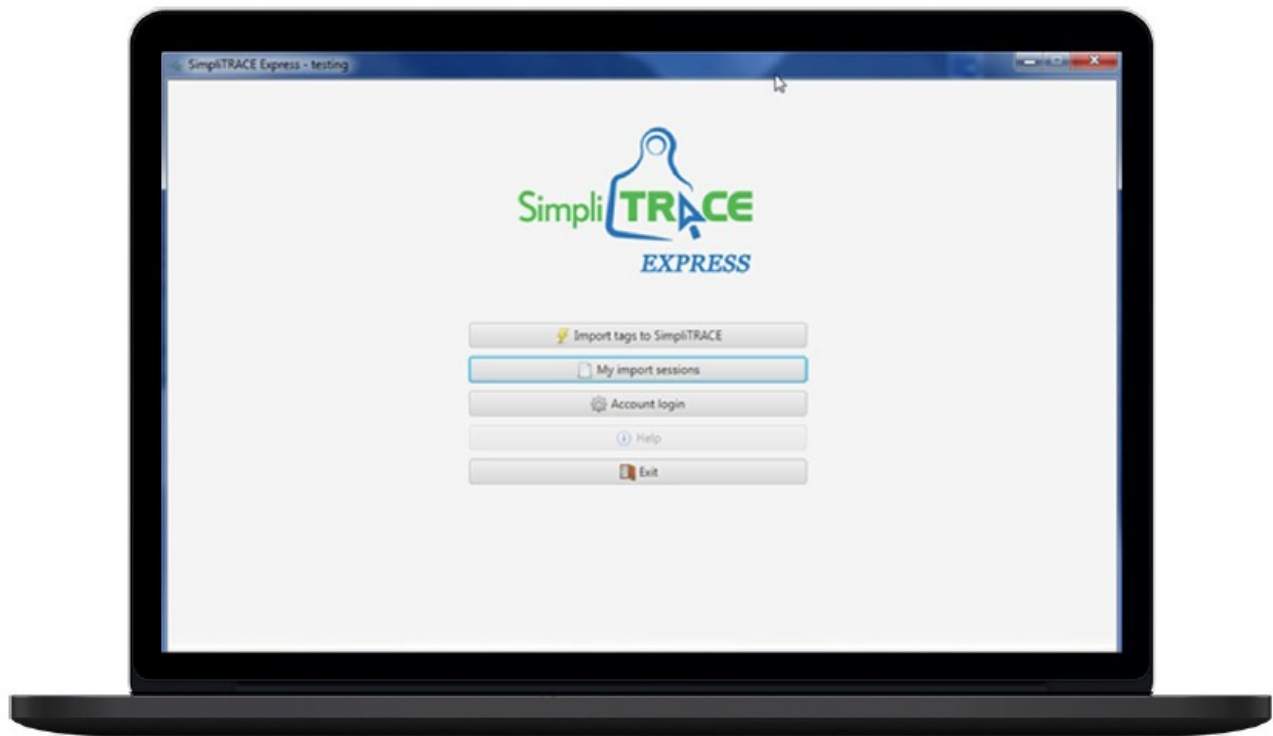
[Home](#) » [Attestra](#) » Attestra Simplitrace Express On Your Computer User Guide 

Contents

- [1 Attestra Simplitrace Express On Your Computer](#)
- [2 Product Information](#)
- [3 Product Usage Instructions](#)
- [4 Downloading and Installing SimpliTRACE Express](#)
- [5 SimpliTRACE Express welcome page](#)
- [6 Application Menu](#)
- [7 Documents / Resources](#)
 - [7.1 References](#)
- [8 Related Posts](#)



Attestra Simplitrace Express On Your Computer



Product Information

SimpliTRACE Express is a software application developed by Attestra that provides traceability information for livestock. It helps to manage and track the movement of animals from farm to fork, ensuring food safety and quality. To use SimpliTRACE Express, users must be registered with the SimpliTRACE application and have a username and password.

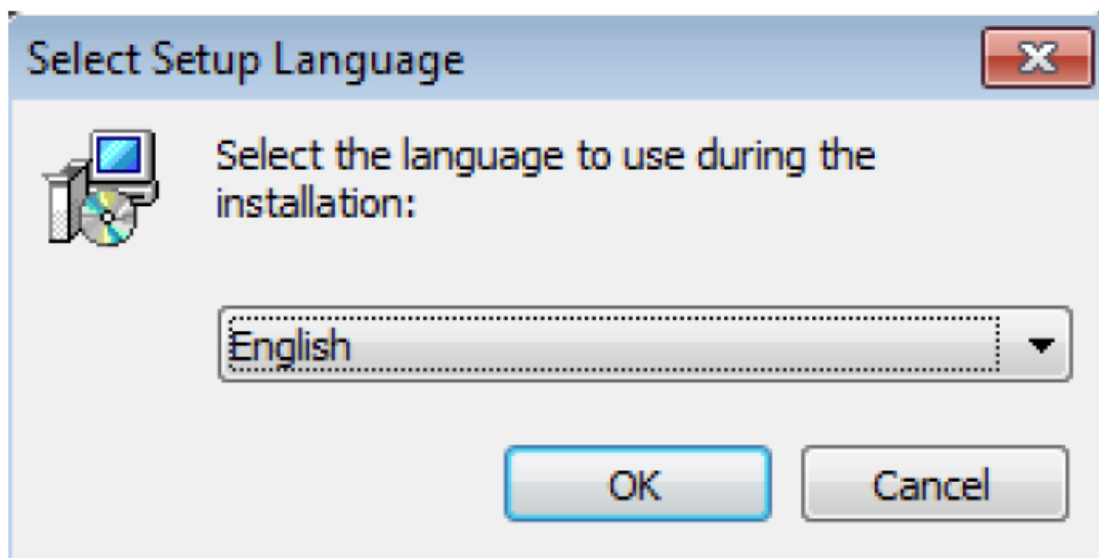
Product Usage Instructions

Before downloading and installing SimpliTRACE Express, ensure that your computer meets the following technical requirements:

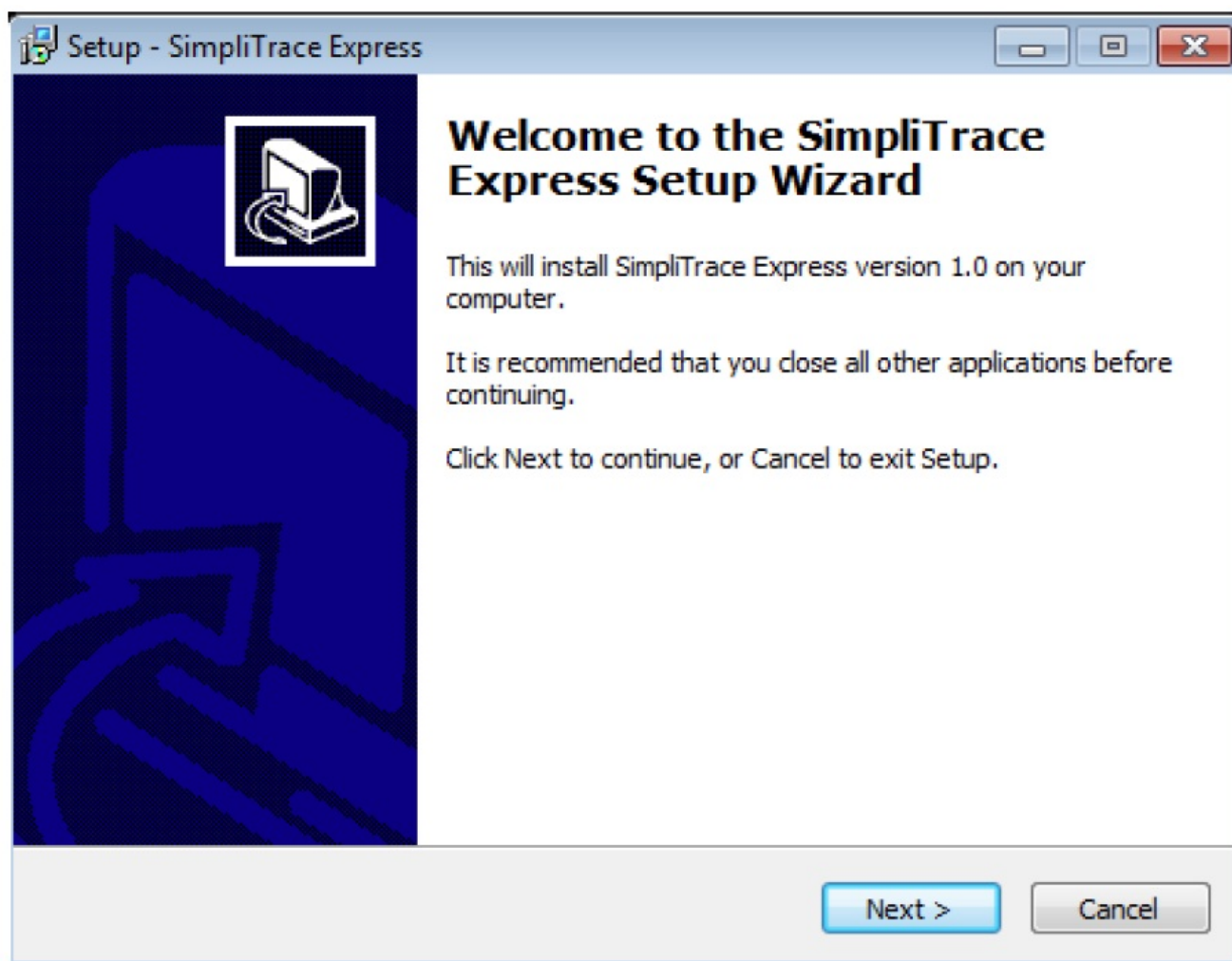
- Internet connection
- Windows 7 or higher operating system
- 1GB of available hard disk space
- 2GB of RAM
- Intel Core i3 processor or higher

To download and install SimpliTRACE Express, follow these steps:

1. Access the Attestra website at <https://attestra.com/en/traceability/livestock/technological-tools/>
2. Click on the Download link and save the .zip file.
3. Open the .zip file and double-click on SimpliTraceExpressInstall.exe to initiate the installation.
4. Select the language for the setup wizard.



5. Read the welcome message and click the Next button.



6. Select the destination folder (we recommend using the default C:\Program Files folder).
7. Create a desktop icon by clicking on the box and then click Next.
8. Click Install to begin the installation.
9. Click Yes in the Windows security dialogue box.
10. Click Finish to exit the setup wizard.

Please note that if you cancel the setup procedure, you will not be able to complete the installation of SimpliTRACE Express and will have to restart the setup wizard. You can start the application before exiting the setup wizard by clicking the Launch SimpliTRACE Express box once the installation is finished. For technical

support during installation or when using SimpliTRACE Express, contact Attestra's Customer Service at 450-677-1757

(toll-free: 1-866-270-4319) or via email at sac@attestra.com.

Downloading and Installing SimpliTRACE Express on your computer

To install the SimpliTRACE Express application, your computer must meet the following technical requirements:

- Type of equipment: Installation must take place on a personal computer (also referred to as an office computer). SimpliTRACE Express cannot be installed on a mobile device such as a smartphone or a tablet.
- Operating System: Windows Vista, Windows 7, Windows 8, Windows 8.1 and Windows 10. SimpliTRACE Express has not been configured for Mac computers (Apple).
- Other technical requirements: Operating the SimpliTRACE Express application requires the use of the Java software platform. The most recent version of Java can be downloaded here:

<https://www.java.com/en/download/>.

IMPORTANT NOTE: To use SimpliTRACE Express you must be registered with the SimpliTRACE application, which means you must have a username and password. If you are not yet registered with SimpliTRACE, contact Attestra's Customer Service by telephone at 1-866-270-4319.

Installation Steps

To start installing SimpliTRACE Express on your computer, you must first download the application from the Attestra website at <https://attestra.com/en/traceability/livestock/technological-tools/>. Once downloaded, the installation procedure can be completed in a few quick steps.

To receive technical support during installation or when using SimpliTRACE Express, contact Attestra's Customer Service at: Attestra technical support

Monday to Friday

From 8:30am to 12:00pm and 1:00pm to 4:30pm (except public holidays)

Tel: 450-677-1757

Toll-free tel: 1-866-270-4319

Email: sac@attestra.com

Downloading and Installing SimpliTRACE Express

In order to be able to use SimpliTRACE Express, you have to follow the eight-step procedure described below:

1. Access <https://attestra.com/en/traceability/livestock/technological-tools/>

2. Click on the Download link

Save the.zip file. Open it once it is downloaded and then double click on: SimpliTraceExpressInstall.exe.

Following this step, a dialogue box will appear on the screen. This dialogue box will allow you to initiate the installation of the application onto your computer with the help of a setup wizard.

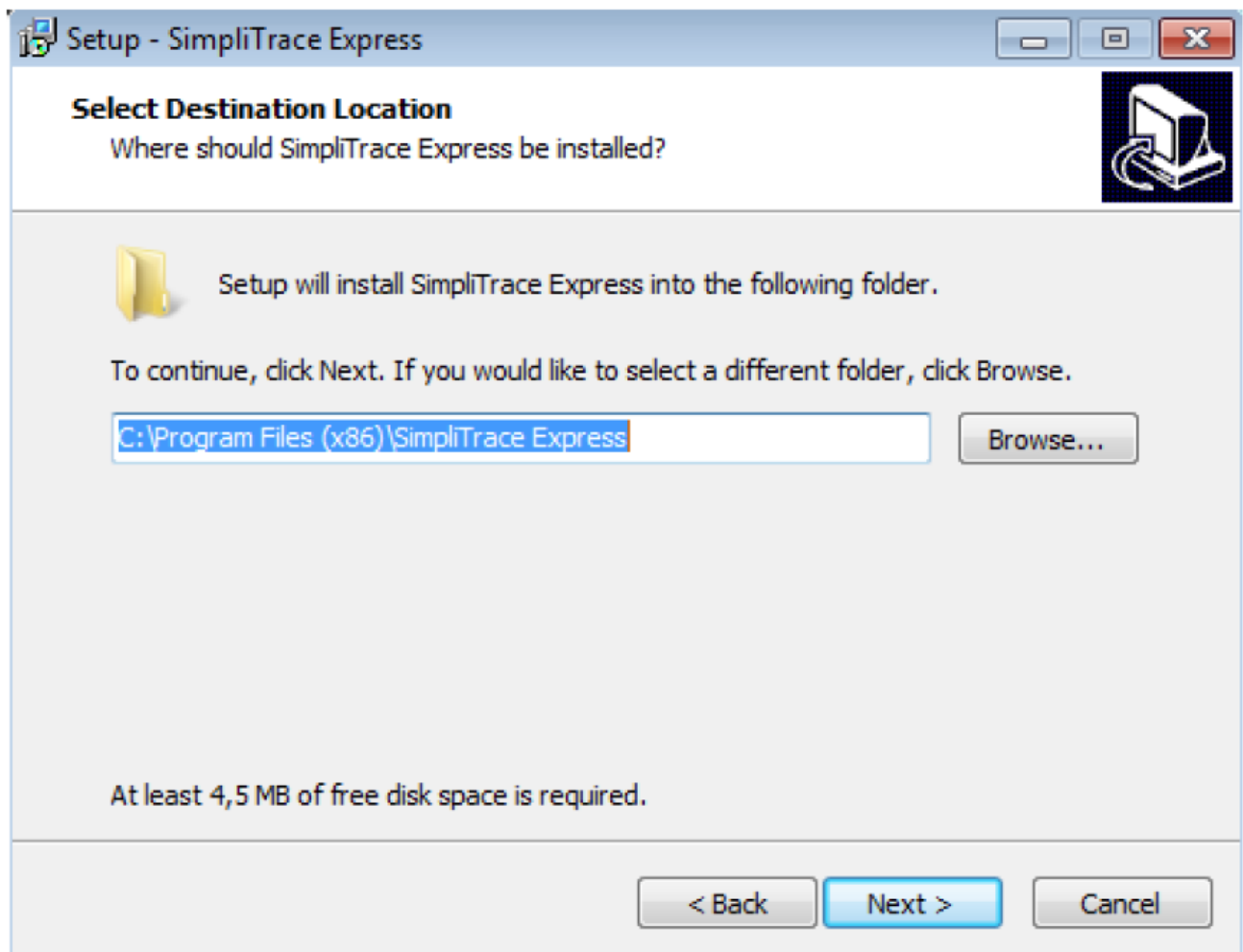
3. Select the language for the setup wizard

4. Read the welcome message from the setup wizard and then click the Next button

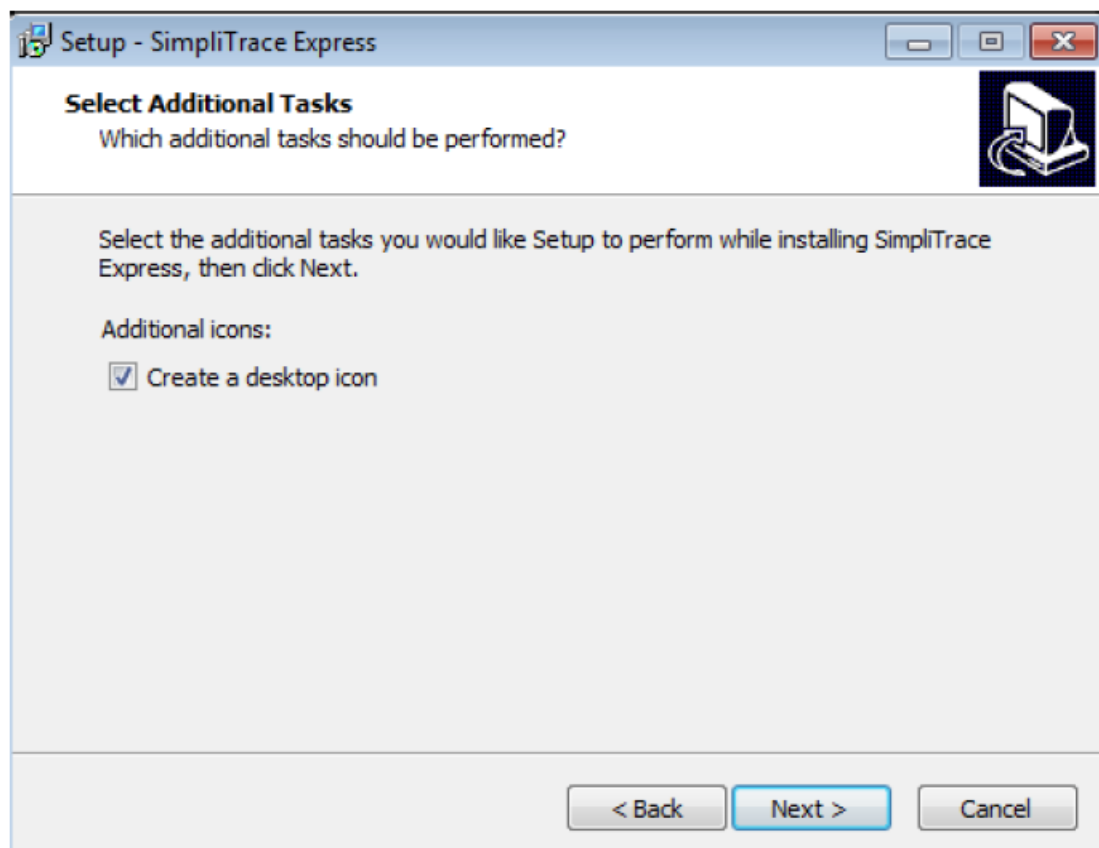
Please note that you can exit the setup wizard at any time by clicking on the Cancel button. However, if you cancel the setup procedure, you will not be able to complete the installation of SimpliTRACE Express and you will have to restart the setup wizard.

5. Destination folder: it is preferable to save in the folder suggested by the installation wizard. Click on the Next button to continue.

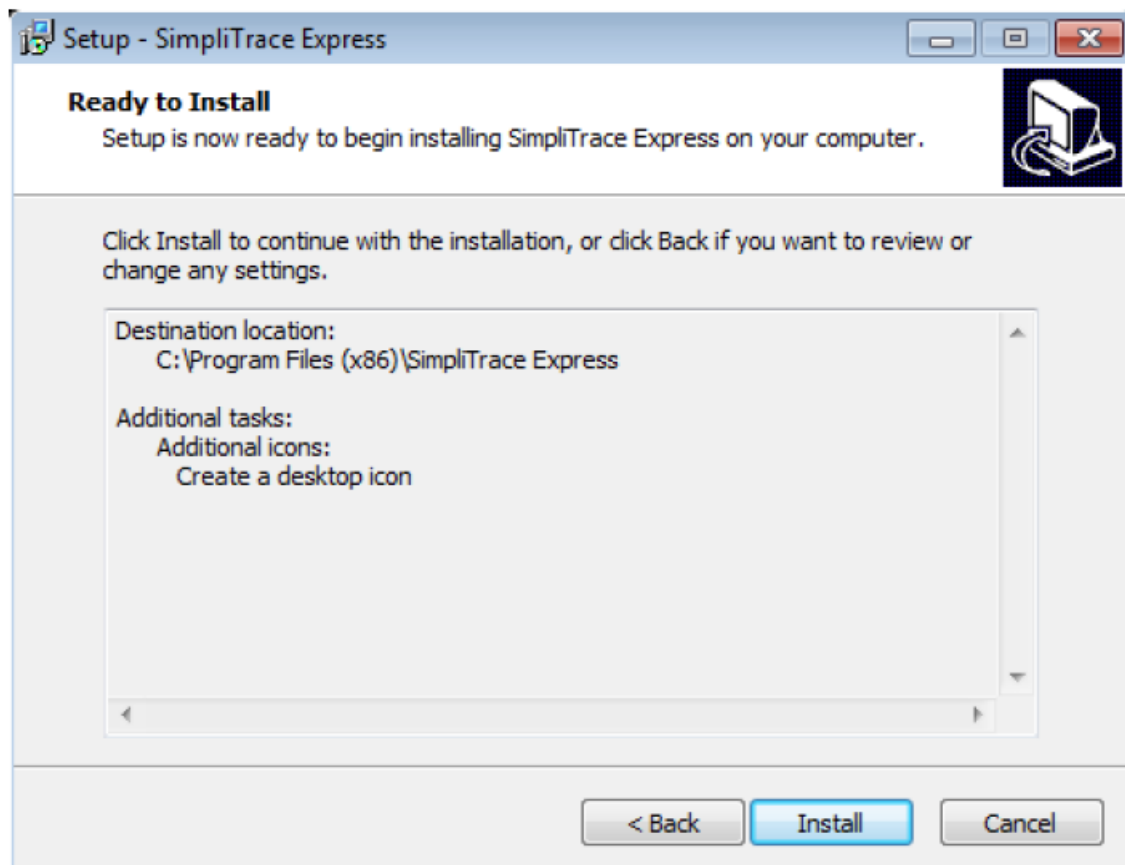
By default, the installation wizard will suggest that you save SimpliTRACE Express in the folder titled C:\Program Files. We strongly recommend that you do not change the suggested choice.



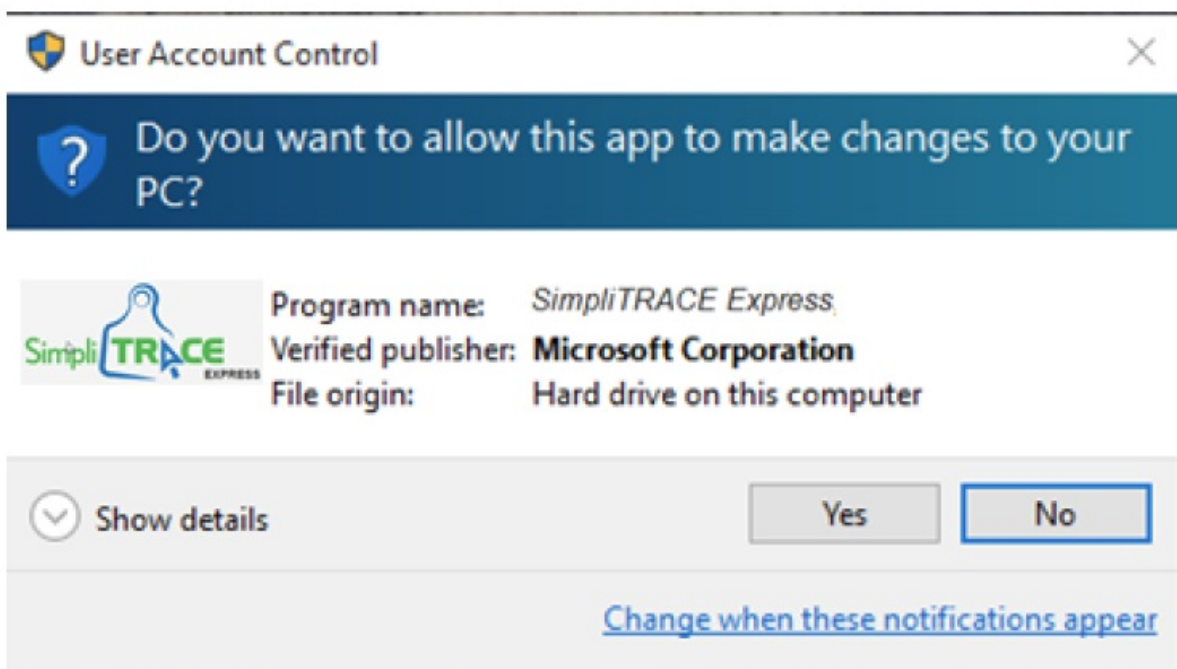
6. Click on the box "Create a desktop icon" in order to add a shortcut to the computer's home screen. Click on Next.



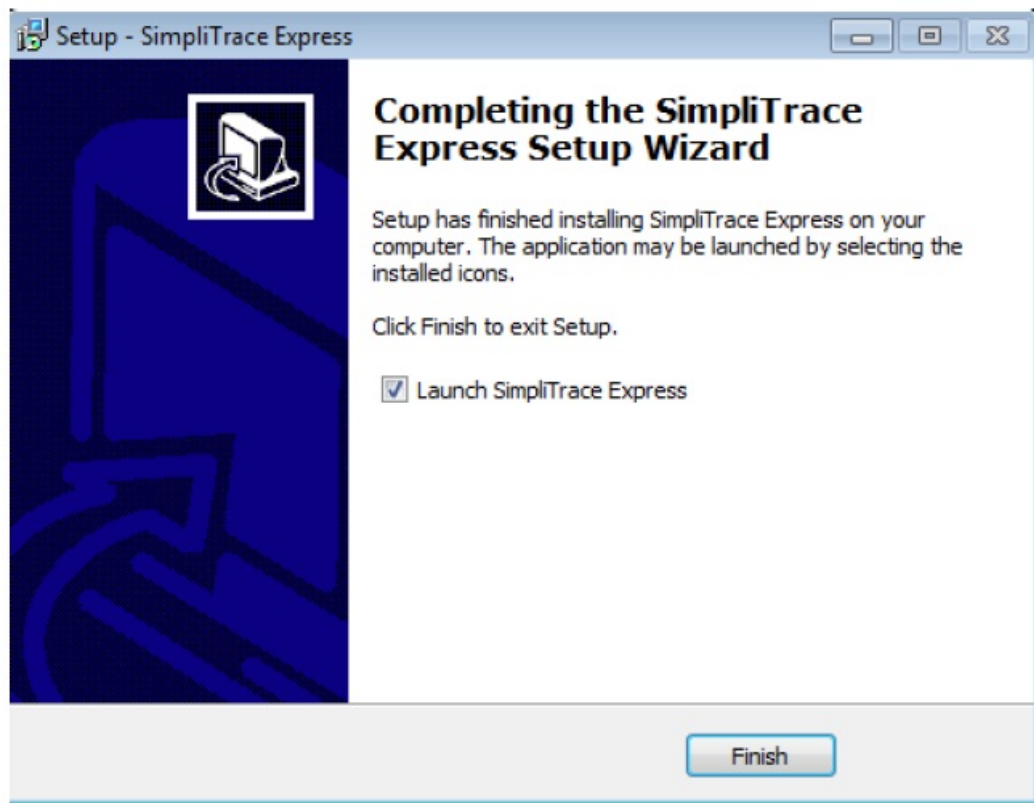
7. The wizard is now ready to install the application. Click on the Install button.



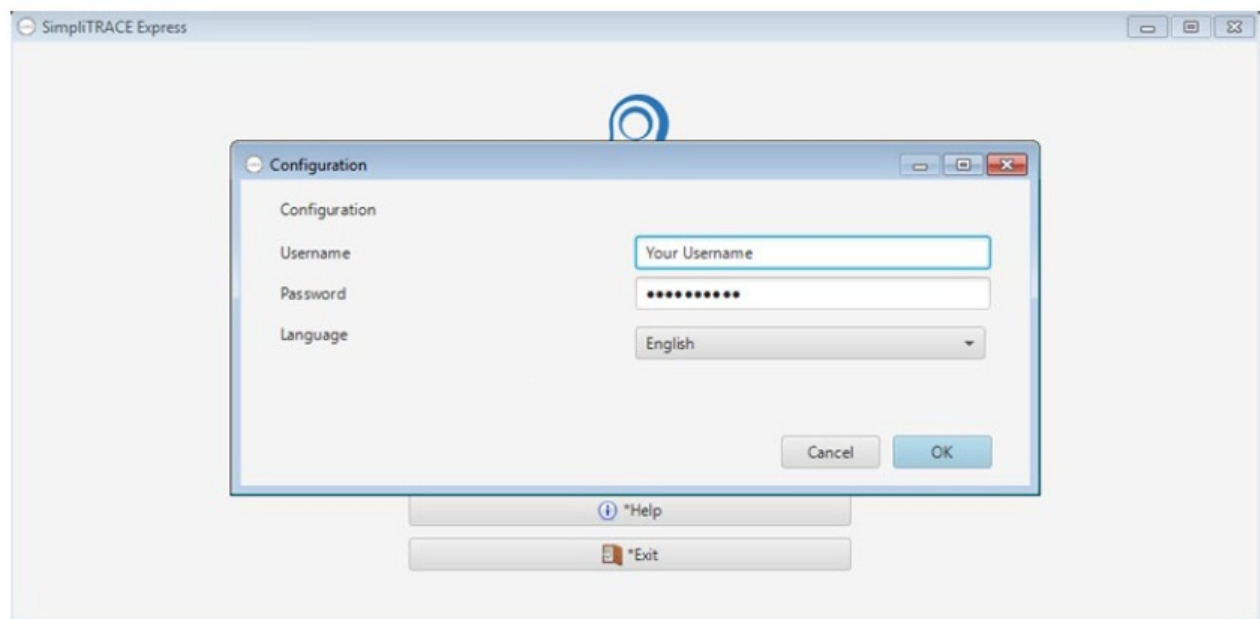
1. The Windows security features will make this dialogue box appear; you should click on the Yes button in order to start the installation.



8. Click on the Finish button to exit from the setup wizard.
 1. Please note that you can start the application before exiting the setup wizard by clicking the "Launch SimpliTRACE Express" box once the installation is finished.

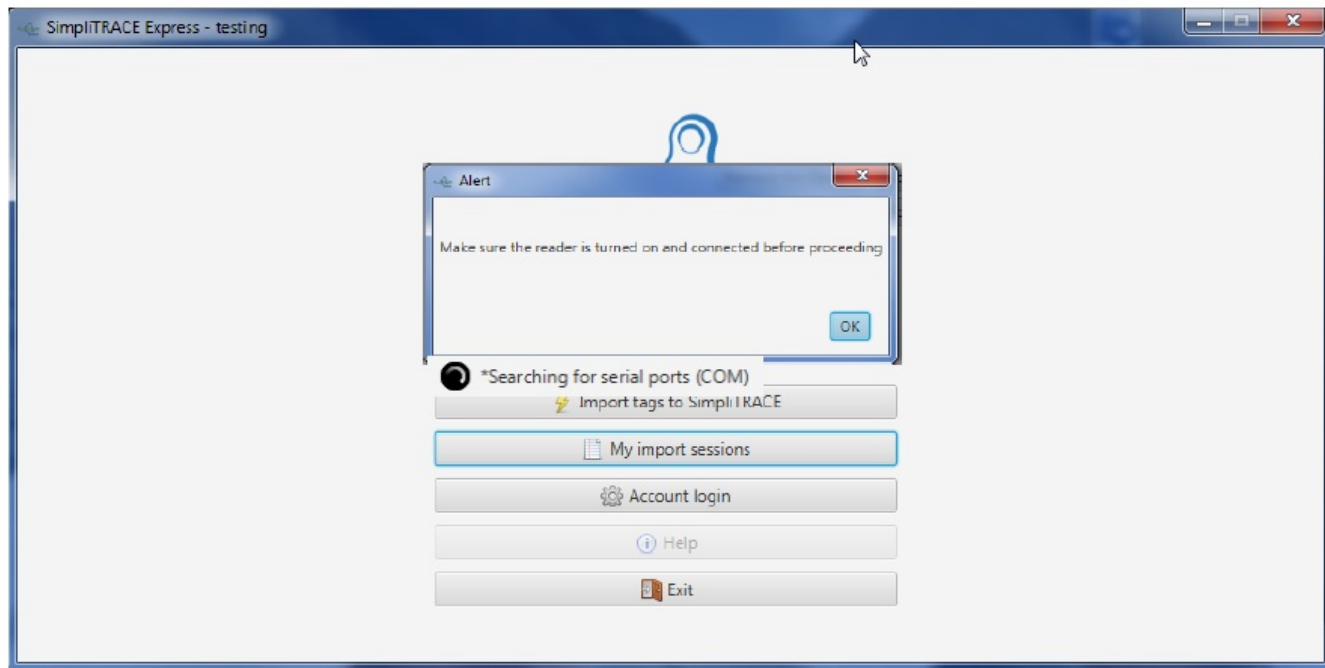


9. During your first use, you must enter your user name and your password for SimpliTRACE. If you do not have this information, contact Attestra's Customer Service or refer to Installation Steps.

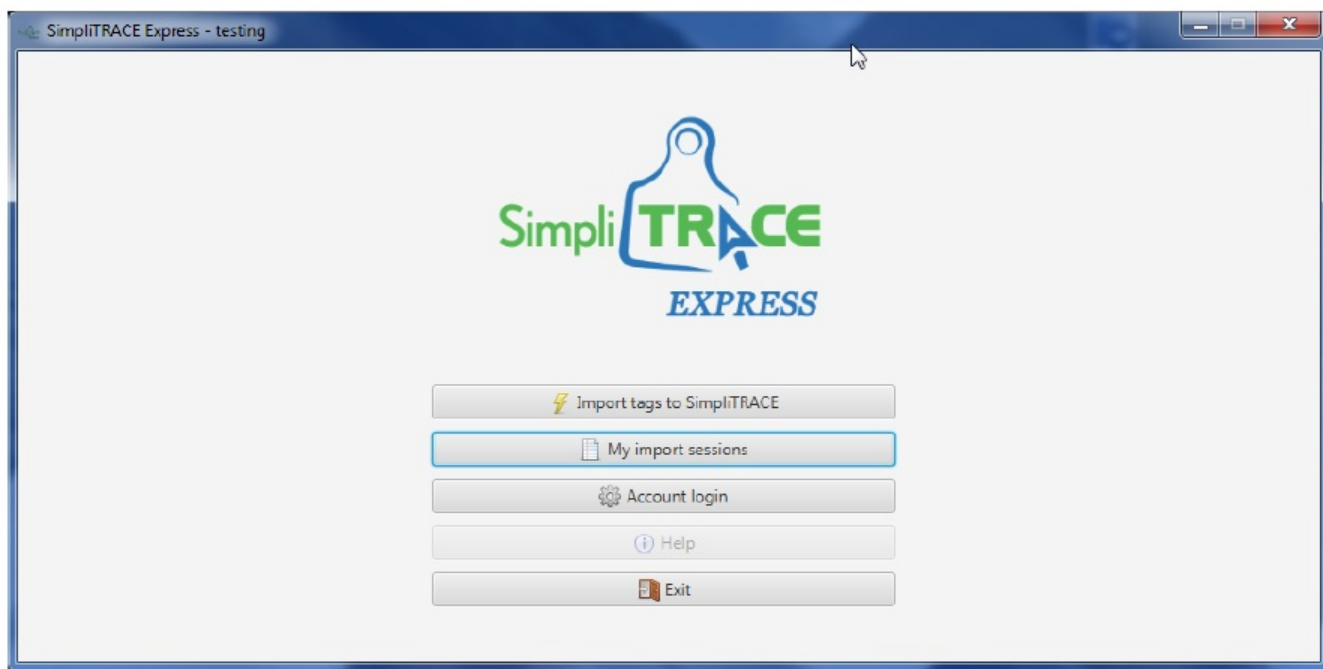


Once the installation is finished, the SimpliTRACE Express welcome page will be displayed. This page will open each time that you access the application to import data from your stick reader. A message will remind you to connect your stick reader to the computer and turn it on. Click the OK button to access the application's menu.

SimpliTRACE Express welcome page



Application Menu



We invite you to consult the User Guide or the video guide at <https://attestra.com/en/traceability/livestock/simplitrace/> to find out more about the functions in this application.

Attestra

555 Roland-Therrien Boulevard, Suite 050 Longueuil (Québec) J4H 4E8

Telephone: 450-677-1757

Toll free: 1-866-270-4319

Fax: 450-679-6547


Toll-free fax: 1-866-473-4033

Website: www.attestra.com

Attestra reserves all property rights. Any full or partial reproduction, transmission by electronic or by any other means, modification, use for commercial purposes or public release are prohibited without the prior written

consent of Attestra.
Downloading and Installing – SimpliTRACE Express

Documents / Resources

	<p>Attestra Simplitrace Express On Your Computer [pdf] User Guide</p> <p>Simplitrace Express On Your Computer, Simplitrace, Express On Your Computer, Your Computer, Computer</p>
---	---

References

- [Attestra - Chef de file en systèmes de traçabilité](#)
- [SimpliTRACE - Attestra](#)
- [Technological Tools - Attestra](#)
- [java.com/en/download/](#)