

 **ATTACK SHARK**  
**X85PRO RGB**  
**Triple Mode**  
**Keyboard**



# ATTACK SHARK X85PRO RGB Triple Mode Keyboard Instruction Manual

[Home](#) » [ATTACK SHARK](#) » ATTACK SHARK X85PRO RGB Triple Mode Keyboard Instruction Manual 

## Contents

- [1 ATTACK SHARK X85PRO RGB Triple Mode Keyboard](#)
- [2 On-Screen Instructions](#)
- [3 Hot Swappable Operation Steps](#)
- [4 Documents / Resources](#)
  - [4.1 References](#)



**ATTACK SHARK X85PRO RGB Triple Mode Keyboard**



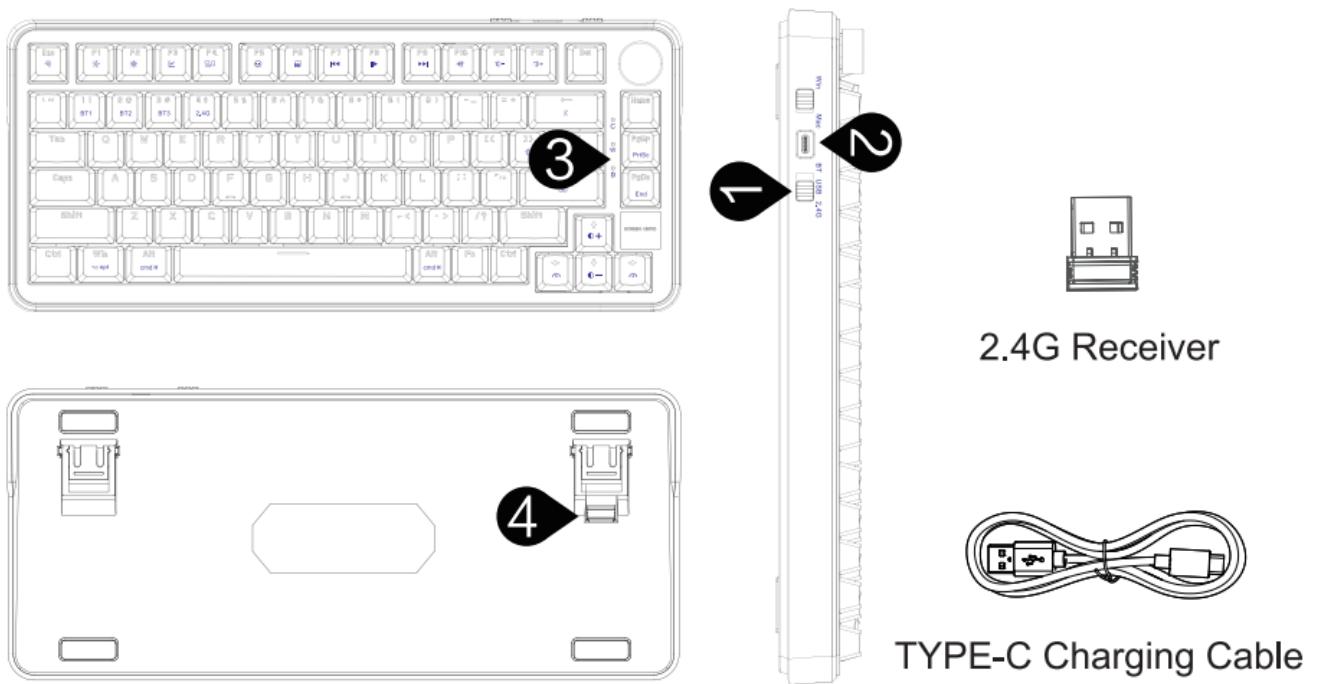
Thank you very much for purchasing our product, and hope it can bring you a new operation and feeling. At the same time, we look forward to getting your valuable suggestions on our products, and we will continue to provide you with better products and services.

#### **Contents list:**

1. X85PRO keyboard xl
2. TYPE-C charging cable xl
3. 2.4G receiver xl
4. . DIY tool xl
5. Manual xl

#### **Quick Start Guide:**

- Three-stage switch: Bluetooth/ Wired/ 2.4G Type-c interface Caps/ WIN lock/ battery/ light 2.4G receiver storage place



### Compatible System:

It can run on computer Windows, MACOS and mobile phone system or computer with Bluetooth version.

### Indicator Light Description:

- Indicator C: Caps, on when locked, off when unlocked.
- Indicator light W: Lock WIN, lock is on, unlock is off.
- Indicator light (battery mark): Charging light, red light when charging, extinguishes when fully charged, flashes slowly when low battery.

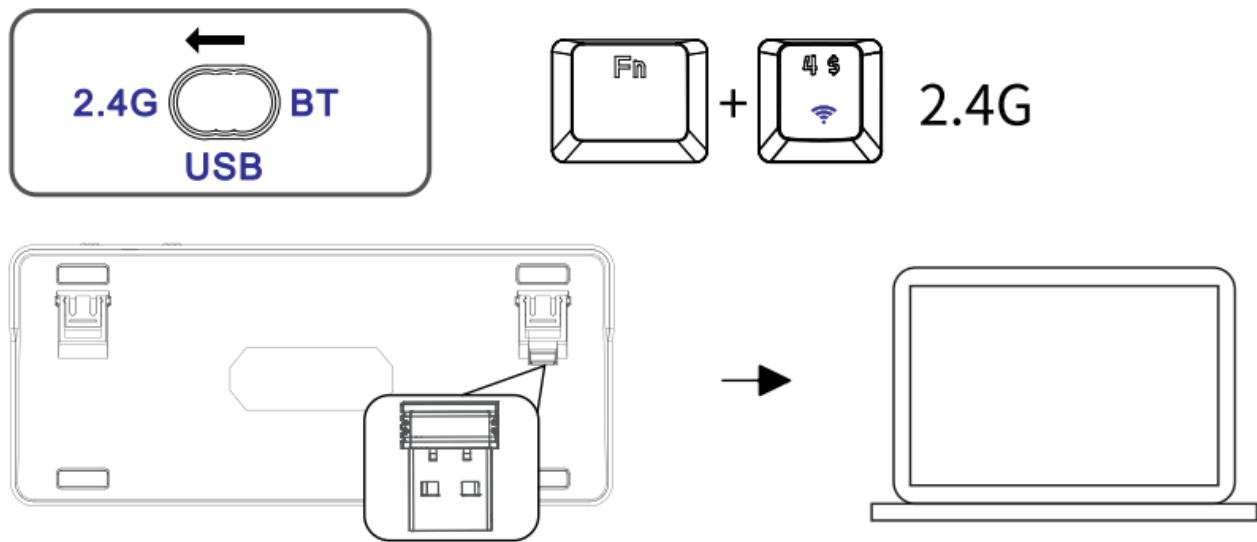
### Hibernate:

In wireless mode, release the keys for 3 minutes to enter standby. The keyboard backlight goes out and lights up when pressing any key. When pressing a key to wake up the keyboard, the key value must trigger the function. In wired mode, the keyboard follows the computer to sleep. It will enter sleep after 30 minutes of standby; the first key press will be invalid and the keyboard will wake up. The second key value is valid.

### Battery Indicator:

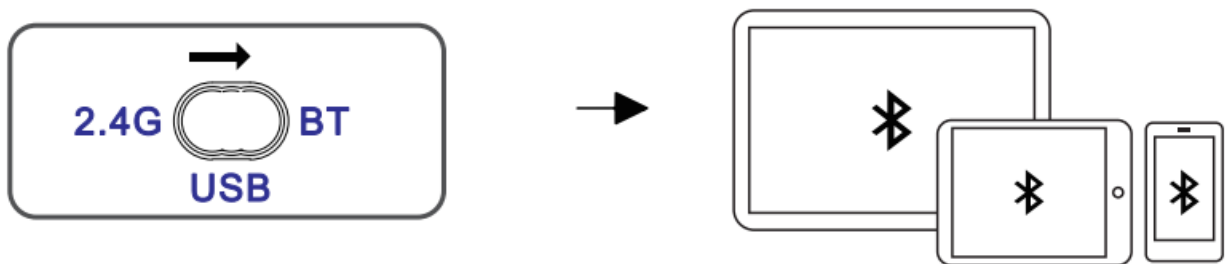
In wireless mode, when the voltage is less than 3.4V, the backlight and screen are turned off, the button functions are used normally, and the low-voltage light flashes slowly. Shut down if less than 3.1 V. It returns to normal after plugging in the wired charging.

### 2.4G Receiver Connection:



**2.4G mode:** 2.4G mode: Insert the dedicated receiver that has been coded, move the three-position switch to the far left, and the keyboard can be used normally. Or short press FN+4 to turn on 2.4G mode, and the keyboard can be used normally. (Long press FN+4 for 2.4G code pairing, the indicator light flashes quickly, exit the code pairing after successful pairing, the mode light stays on for 2S, and after 30 seconds when the paired device cannot be found, the code goes out after exiting the code pairing mode, and the keyboard goes to sleep.)

#### Bluetooth connection:

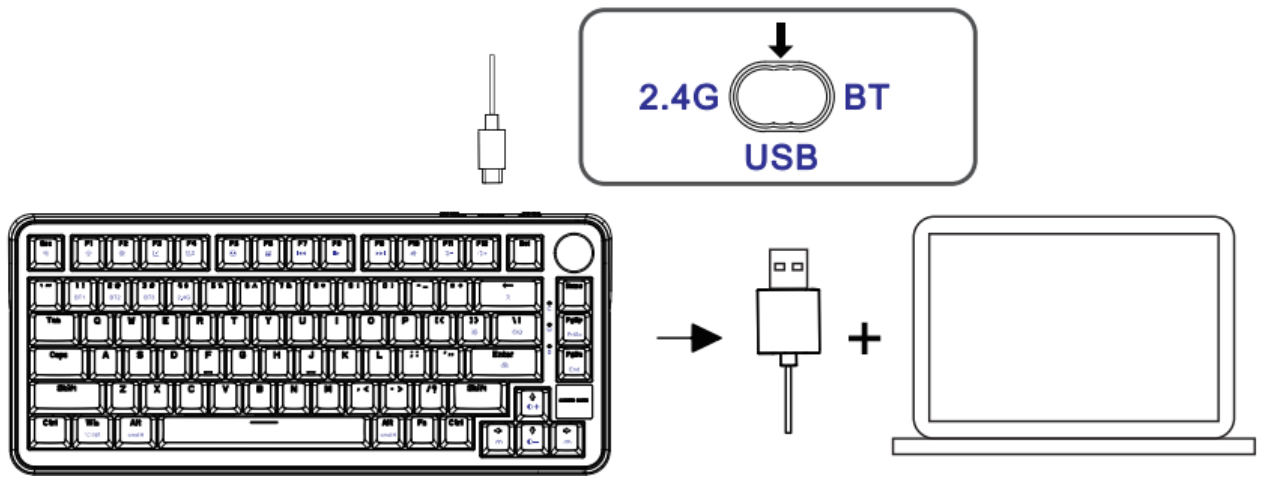


**Bluetooth mode:** Move the three-position switch to the far right.

#### There are three Bluetooth channels in total:

Short press FN+1: Bluetooth 1 (name: X85PRO 5.0\_1) FN+2: Bluetooth 2 (name: X85PRO 5.0\_2) FN+3: Bluetooth 3 (name: X85PRO 5.0\_3) Open the device that needs to be paired for Bluetooth pairing. If the pairing is successful, the keyboard can be used normally. When multiple Bluetooth devices are connected at the same time, short press the corresponding Bluetooth key to switch between Bluetooth devices. (Long press the corresponding Bluetooth key to pair the Bluetooth code, the red\blue\yellow indicator light flashes quickly, and the indicator light stays on for 2S after the device is connected. If the device is not connected, the indicator light goes out and the keyboard goes to sleep.)light turns off and the keyboard enters sleep.)

#### Wired connection:



Wired mode: first insert the cable into the TYPE-C interface, and then connect the other end to the computer, turn the three-position switch to the middle, and the keyboard can be used normally.

### Multimedia and function keys (automatically identify the operating system)



**Tip:** Press the key combination Fn+BackSpace, the backlight is off, and the number keys 1 to 0 are on to display

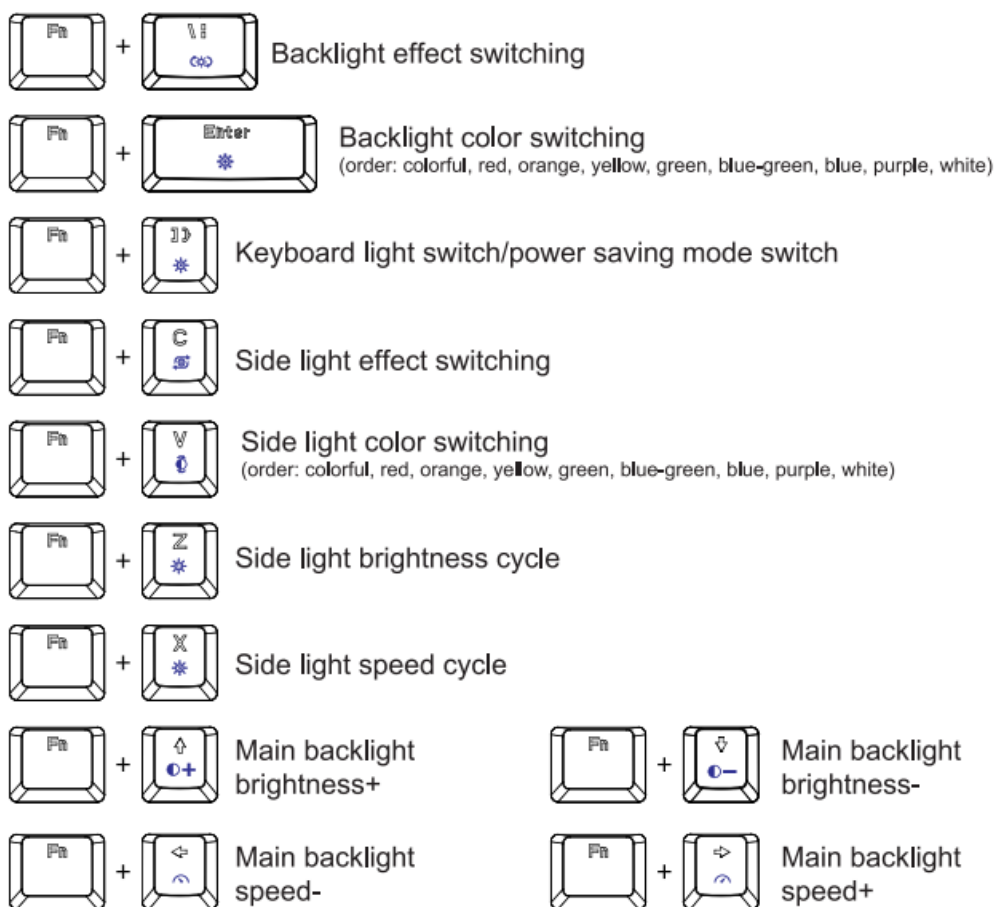
the percentage of power, for example: 1 is on, indicating 10% power, 1 and 2 are on, indicating 20% power. and so on. (Below 30% red, below 50% yellow, above 50% green).

## On-Screen Instructions

1. Turn on the computer to display LOGO, and then jump to the main screen.
2. The content displayed on the main screen: date, time, power, system, connection mode, lock WIN, uppercase and lowercase, etc.
3. Menu interface: The left and right knobs are the functions of turning up and down the menu, and pressing the button down confirms the entry or selection.

**Tip:** FN+knob, switch screen operation and volume control.

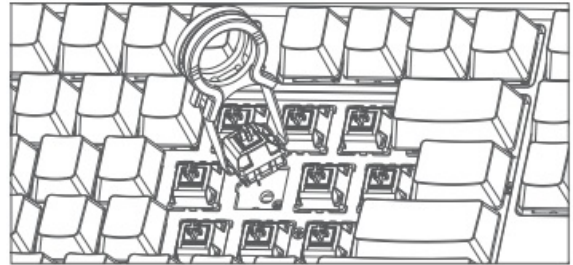
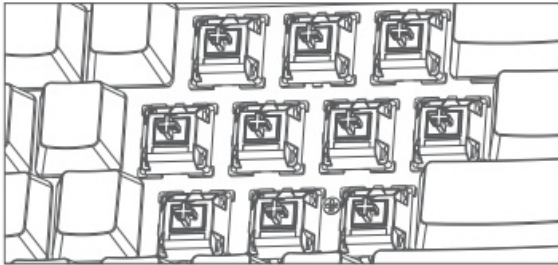
## Lighting Operation Instructions



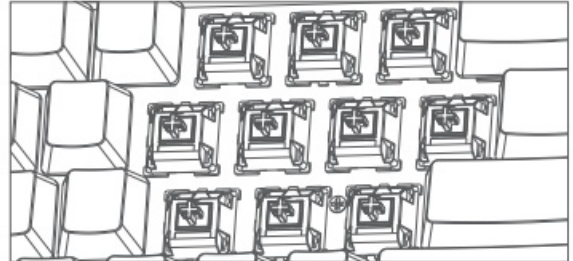
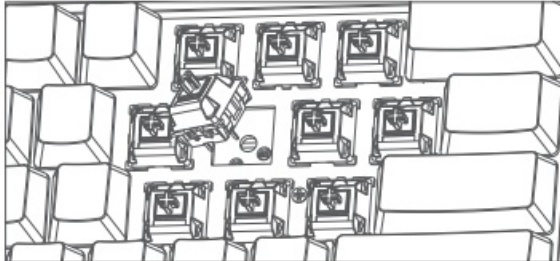
## Hot Swappable Operation Steps

Hot swappable: It can replace different switch, customize your favorite tactile and auditory feedback, the 3/5pin switch seat is compatible with most mechanical switch.

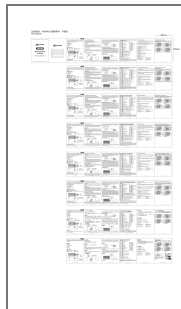
1. Pull out the keycap with a key puller
2. Pull out the switch with a switch puller



3. Proofreading pins and holes
4. Press the switch vertically



## Documents / Resources



[ATTACK SHARK X85PRO RGB Triple Mode Keyboard](#) [pdf] Instruction Manual  
X85PRO, X85PRO RGB Triple Mode Keyboard, RGB Triple Mode Keyboard, Triple Mode Keyboard, Mode Keyboard, Keyboard

## References

- [User Manual](#)

[Manuals+.](#) [Privacy Policy](#)

This website is an independent publication and is neither affiliated with nor endorsed by any of the trademark owners. The "Bluetooth®" word mark and logos are registered trademarks owned by Bluetooth SIG, Inc. The "Wi-Fi®" word mark and logos are registered trademarks owned by the Wi-Fi Alliance. Any use of these marks on this website does not imply any affiliation with or endorsement.