



**X11 Triple Mode
Lightweight
Mouse**



ATTACK SHARK X11 Triple Mode Lightweight Mouse Instruction Manual

[Home](#) » [ATTACK SHARK](#) » **ATTACK SHARK X11 Triple Mode Lightweight Mouse Instruction Manual** 

Contents

- [1 ATTACK SHARK X11 Triple Mode Lightweight Mouse](#)
- [2 Product Description](#)
- [3 PACKING LIST](#)
- [4 Button Function Description](#)
- [5 Connection mode](#)
- [6 2.4G connection method](#)
- [7 Wired mode connection method](#)
- [8 PRECAUTIONS](#)
- [9 Documents / Resources](#)
 - [9.1 References](#)
- [10 Related Posts](#)



ATTACK SHARK X11 Triple Mode Lightweight Mouse



Thank you very much for purchasing our product, and hope it can bring you a new operation and feeling. At the same time, we look forward to getting your valuable suggestions on our products, and we will continue to provide you with better products and services.

Product Description

1. Product model: X11
2. Product interface type: USB-Type-C
3. Product connection method: USB, 2.4G, Bluetooth
4. Product optical sensor: Original phase PAW3311
5. Transmission frequency: 2402MHz—2480MHz
6. Rate of return (HZ): 125/250/500/1000 HZ (driver adjustable)
7. Frame rate (IPS): 400|PS
8. Maximum acceleration (G): 40G
9. DPI and light color: 800 (red)-1600 (green)-2400 (blue)-3200 (yellow)-5000 (cyan)-22000 (purple)
10. Charging current: $\geq 280\text{mA}$
11. Charging voltage: 4.25v-5.25v
12. Product weight: 59g#3g
13. Product size: 128*64*40.5mm
14. Data cable interface (length): Type-C/1.5 meters
15. Wireless transmission distance: 10 meters
16. Switch brand and service life: Huanyu 20 million times
17. When the mouse is placed on the charger, the dynamic white light of the charger will run from bottom to top. When the charger is full, it will turn off. By default, the neon light will go out after 10 minutes when the charger is

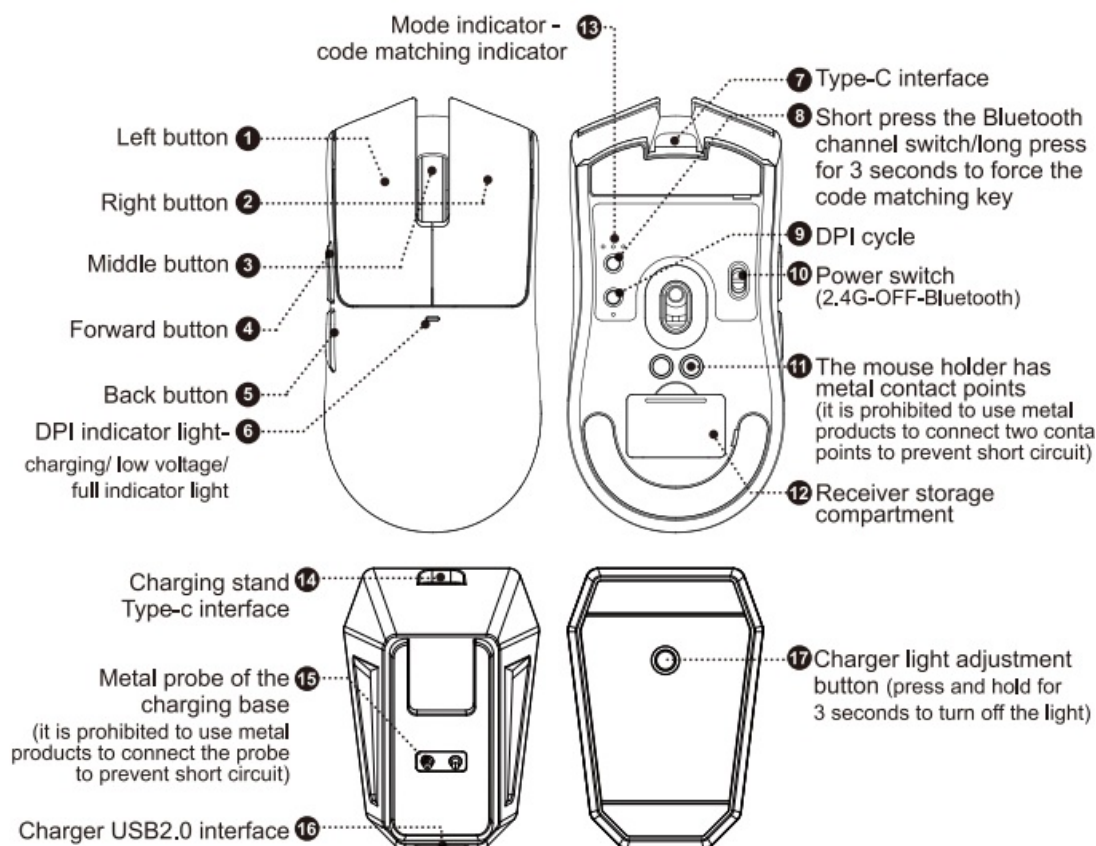
powered on.

18. Support operating systems: XP, Win7, Win8, win10, win11, Mac OS, Android, Linux, etc.

PACKING LIST

- Mouse*1
- 2.4G receiver*1
- Instruction manual*1
- Charging base*1
- Cable*1

Button Function Description

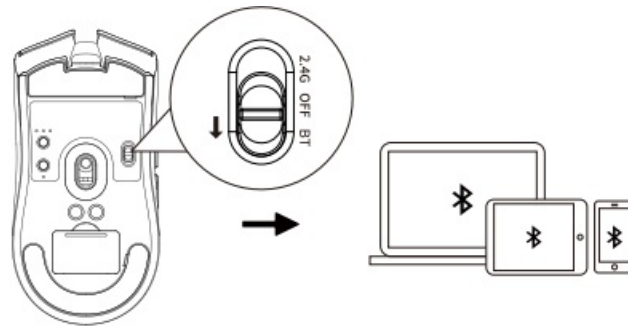


Kind tips:

1. Sleep mode
 1. The mouse stops working and immediately enters shallow sleep.
 2. The mouse will enter deep sleep if there is no operation for 10 minutes.
2. Sleep wake-up method
 1. Shallow sleep mobile wake-up
 2. Deep sleep button wake-up
3. Hardware connection: Insert the product's USB plug into the USB 1.1 or above port (when the product is used for the first time, an automatic hardware installation prompt will pop up in the lower right corner of the computer)

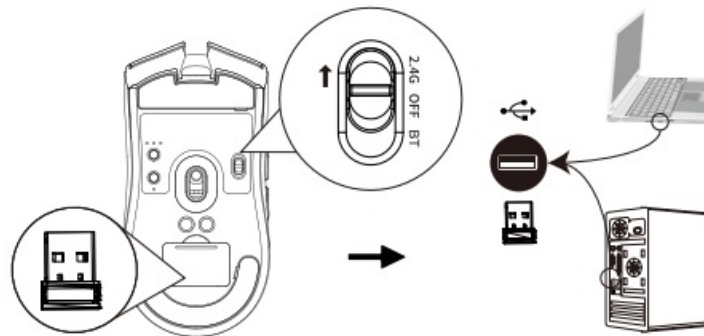
Connection mode

Bluetooth connection method:



1. The power switch must be in the Bluetooth position, and the Bluetooth mode lights are green (BT1) and blue (BT2);
2. Short press the 8 button to select the Bluetooth channel. When BT1 is selected, the Bluetooth channel light of BT flashes green. When BT2 is selected, the BT2 channel light flashes blue;
3. Press and hold the 8 button for about three seconds, the Bluetooth channel 1 mode light will flash green quickly. At that time, please turn on the Bluetooth of your mobile phone or other device that needs to be paired to search. When "X11 mouse 1" appears, please connect in time. After the connection is successful, the code matching light will stay on green for about 1 second, and then turn off; Press and hold the 8 button for about three seconds, the Bluetooth channel 2 mode light will flash blue quickly. At that time, please turn on the Bluetooth of your mobile phone or other device that needs to be paired to search. When "X11 mouse 2" appears, please connect in time. After the connection is successful, the pairing light will stay on blue for about 1 second, and then turn off.

2.4G connection method

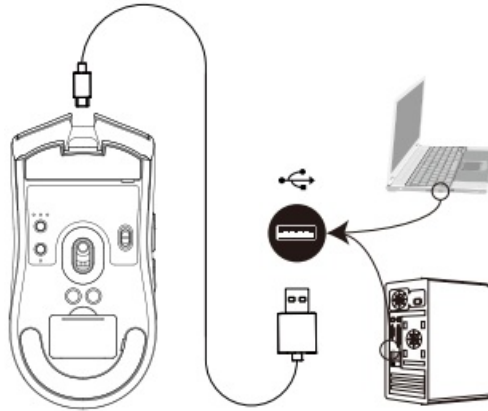


1. When you want to use the 2.4G mode of the mouse, turn the power switch to the 2.4G position, then take out the 2.4G receiver of the mouse and plug the receiver into a free USB port of the computer. At this time, the computer will automatically install the configuration. software, when the computer prompts that the installation is complete and can be used, the mouse can be connected to the computer. If the computer does not respond when you plug in the receiver, you need to change another USB port. At this time, the computer will automatically code and install the corresponding adaptation software. Generally, the computer will prompt: The installation is complete and can be used, which means that the mouse is successfully connected to the computer.
2. If there is a connection failure or signal loss in the 2.4G signal, please follow the steps below:
 1. Turn the power switch to 2.4G;
 2. Press and hold the code matching button, the code matching mode light flashes red quickly;
 3. After the code is successfully matched, the mode light turns red for about one\ second, and then goes

out.

Wired mode connection method


Use the provided TYPE-C cable to connect it to the computer. When the cable is plugged in, the mouse defaults to wired mode and is charging. When you move the mouse, the computer screen pointer can move and the mouse can be used normally.



PRECAUTIONS

- It is forbidden to immerse the mouse in liquid or spray the mouse with liquid
- It is forbidden to use the mouse in high temperature and high humidity environment
- Do not place the mouse in an open flame Violence against pressing the mouse is prohibited
- Do not disassemble the mouse
- It is prohibited to use fast charger to charge the mouse

Documents / Resources

	ATTACK SHARK X11 Triple Mode Lightweight Mouse [pdf] Instruction Manual X11 Triple Mode Lightweight Mouse, X11, Triple Mode Lightweight Mouse, Mode Lightweight Mouse, Lightweight Mouse, Mouse
---	--

References

- [User Manual](#)

[Manuals+](#), [Privacy Policy](#)

This website is an independent publication and is neither affiliated with nor endorsed by any of the trademark owners. The "Bluetooth®" word mark and logos are registered trademarks owned by Bluetooth SIG, Inc. The "Wi-Fi®" word mark and logos are registered trademarks owned by the Wi-Fi Alliance. Any use of these marks on this website does not imply any affiliation with or endorsement.