



Atrust t68L Thin Clientt68L Client VMware Desktop User Guide

[Home](#) » [Atrust](#) » Atrust t68L Thin Clientt68L Client VMware Desktop User Guide 

Contents

- [1 Atrust t68L Thin Client VMware Desktop User Guide](#)
 - [1.1 Power Button and I/O Ports](#)
 - [1.2 Assembling the AC Adapter](#)
 - [1.3 Getting Connected](#)
 - [1.4 Getting Started](#)
 - [1.5 Configuring the Time Zone](#)
 - [1.6 Returning to the Quick Connection Screen](#)
 - [1.7 Accessing Microsoft Remote Desktop Services](#)
 - [1.8 Accessing Citrix Services](#)
 - [1.9 Accessing VMware View Services](#)
- [2 Documents / Resources](#)
 - [2.1 References](#)
- [3 Related Posts](#)

Atrust t68L Thin Client VMware Desktop User Guide



Atrust t68L Thin Client

Quick Start Guide

Thank you for purchasing Atrust thin client solution.

Read this Quick Start Guide to set up your t68L and access Microsoft, Citrix, or VMware desktop virtualization services quickly.

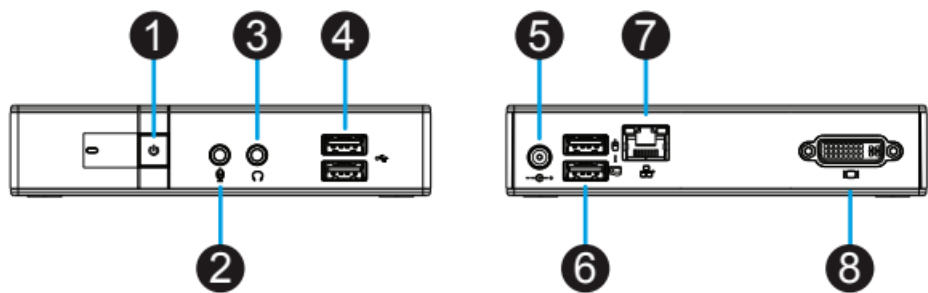
For more information, please refer to the User's Manual for t68L.

NOTE: Your warranty will be **voided** if the warranty seal on the product is broken or removed.



Sample Barcode

Power Button and I/O Ports



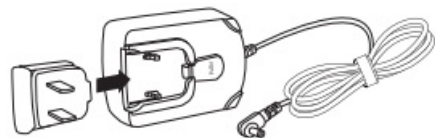
No.	Component	Description
1	Power button	<ul style="list-style-type: none">Press to turn on the thin client.Press to wake up the thin client from System Sleep mode (see Topic 4 for Suspend feature).Long press to power off the thin client.
2	Microphone port	Connects to a microphone.
3	Headphone port	Connects to a set of headphones or a speaker system.
4	USB port	Connects to a USB device.
5	DC IN	Connects to an AC adapter.
6	USB port	Connects to a mouse or keyboard.
7	LAN port	Connects to your local area network.
8	DVI-I port	Connects to a monitor.

Assembling the AC Adapter

To assemble the AC adapter for your t68L, please do the following:

1. Unpack your thin client package and take out the AC adapter and its detached plug.
2. Slide the plug into the AC adapter until it clicks into place.

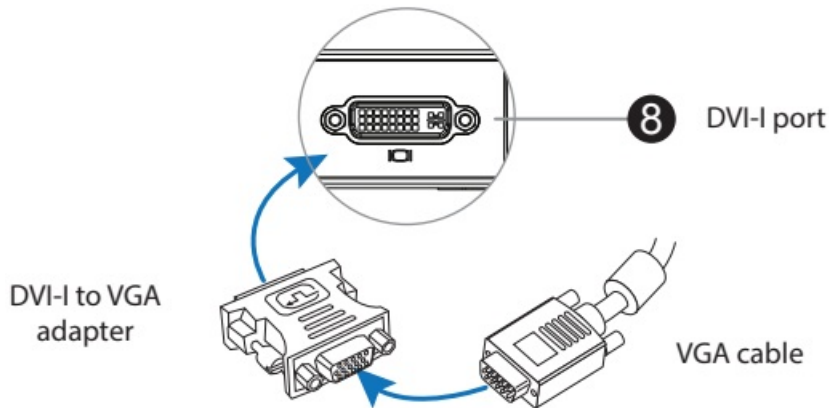
NOTE: The supplied plug may vary with your area.



Getting Connected

To make connections for your t68L, please do the following:

1. Connect USB ports ⑥ to a keyboard and mouse separately.
2. Connect the LAN port ⑦ to your local network with an Ethernet cable.
3. Connect the DVI-I port ⑧ to a monitor, and then turn the monitor on. If only the VGA monitor is available, use the supplied DVI-I to VGA adapter.



4. Connect the DC IN ⑤ to a power outlet using the AC adapter supplied.

Getting Started

To start using your t68L, please do the following:

1. Ensure that your monitor is connected and turned on.
NOTE: Please note that you need to connect and turn on your monitor before powering up the thin client. Otherwise, the client may fail to set an appropriate resolution for the monitor.
2. Press the Power button to turn on the client. Wait a moment for Atrust Quick Connection screen to appear.
3. Go to ⑤ to set the time zone for the first time use.
If the time zone had been set:
 - (a) Go to ⑦ for accessing Microsoft Remote Desktop services.
 - (b) Go to ⑧ for accessing Citrix services.
 - (c) Go to ⑨ for accessing VMware View or Horizon View services.


Atrust Quick Connection Screen

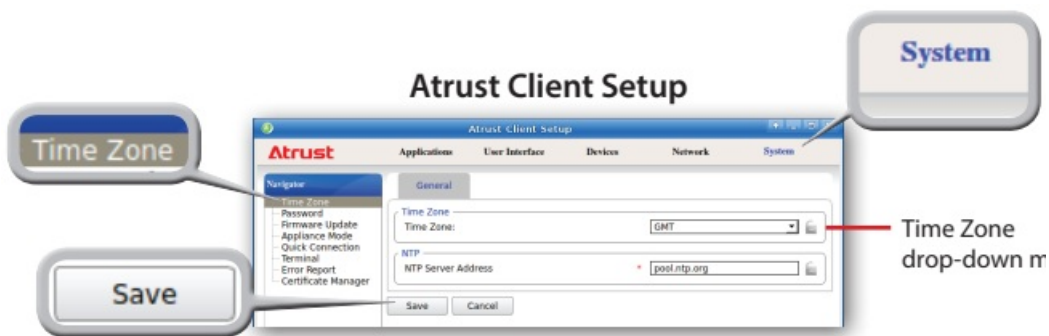


Power Off	Click the icon to suspend , shut down , or restart the system.
Local Desktop	Click the icon to enter the local Linux desktop. To return to this screen from the local Linux desktop, see 6 .
Setup	Click the icon to launch Atrust Client Setup.
Mixer	Click the icon to configure audio settings.
Network	Indicates the network type (wired or wireless) and status. Click the icon to configure network settings.

Configuring the Time Zone

To set the time zone for your t68L, please do the following:

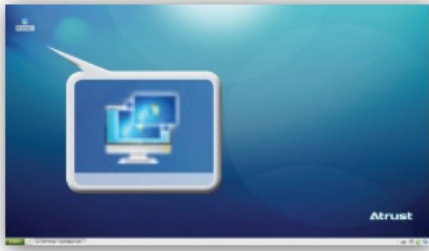
1. Click the **Setup**  icon to launch Atrust Client Setup.
2. On Atrust Client Setup, click **System** > **Time Zone**.



3. Click the **Time Zone drop-down menu** to select the desired time zone.
4. Click **Save** to apply, and then close Atrust Client Setup.


Returning to the Quick Connection Screen

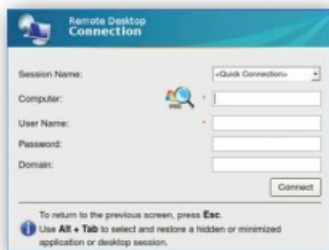
To return to **Atrust Quick Connection screen** when on local Linux desktop, please double click **Atrust Quick Connection** on that desktop.




Accessing Microsoft Remote Desktop Services

To access Microsoft Remote Desktop services, please do the following:

1. Click  on Atrust Quick Connection screen.
2. On the appeared window, type in the computer name or IP address of the computer, user name, password, and domain (if any), and then click Connect.



NOTE: To discover available MultiPoint Server systems over your network, click , select the desired system, and then click **OK**. Type in data manually if the desired system cannot be found.


NOTE: To return to **Atrust Quick Connection screen**, press **Esc**.

3. The remote desktop will be displayed on the screen.

Accessing Citrix Services

Connecting to the Server

To connect to the server through which virtual desktops and applications are accessible, please do the following:

1. Click  on Atrust Quick Connection screen.
2. On the appeared **Atrust Citrix Connection screen**, enter the appropriate IP address / URL / FQDN of the server, and then click **Log On**.

NOTE: FQDN is the acronym of Fully Qualified Domain Name.


Atrust Citrix Connection Screen



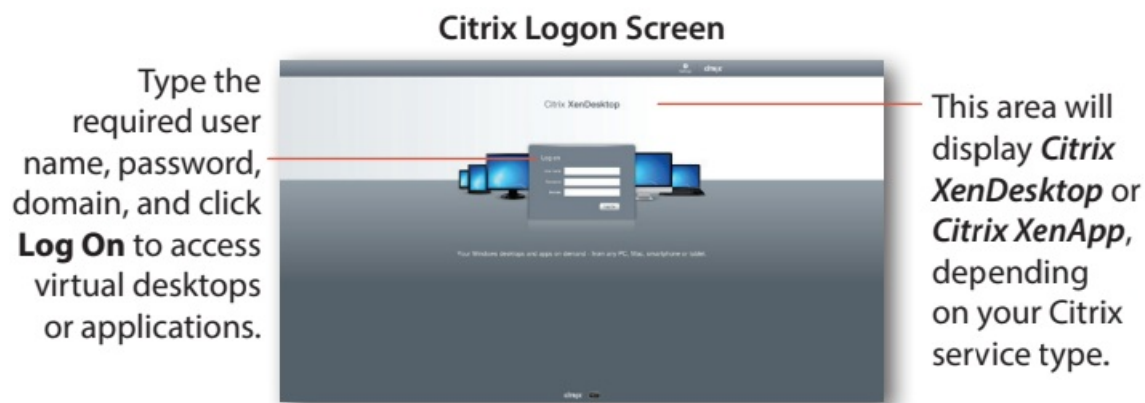
NOTE: To return to **Atrust Quick Connection screen**, press **Esc**.

Logging On to Citrix Services

When connected, the **Citrix Logon screen** appears. The appeared screen **may vary with** the service type and version.

NOTE: A message “This Connection is Untrusted” might appear. Consult the IT administrator for details and ensure the connection is secure first. To import a certificate, click **Setup**  **> System > Certificate Manager > Add**. To bypass, click **I Understand the Risks > Add Exception > Confirm Security Exception**.

The following is an example of Citrix Logon screens.



NOTE: To return to **Atrust Citrix Connection screen**, press **Esc**.

NOTE: On **Desktop Selection** or **Application selection screen**, you can

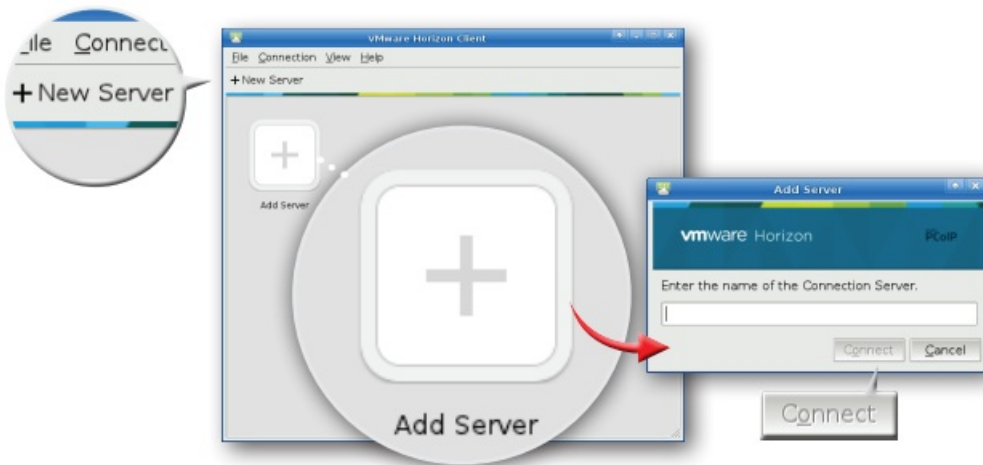
- Use **Alt + Tab** to select and restore a hidden or minimized application.
- Click **Log off** on the top of the screen to return to **Citrix Logon screen**.
- Press **Esc** to return to **Atrust Citrix Connection screen** directly.

Accessing VMware View Services


To access VMware View or Horizon View services, please do the following:



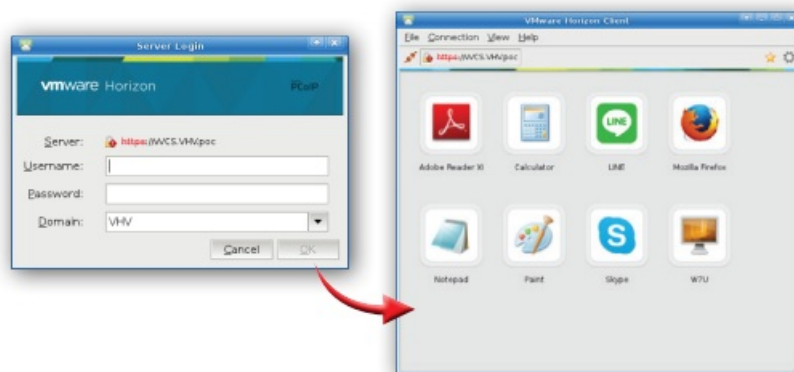
1. Click on **VMware View** Atrust Quick Connection screen.
2. On the opened window, double-click **Add Server** icon or click **New Server** in the top-left corner. A window appears prompting for the name or IP address of the VMware View Connection Server.
NOTE: To return to **Atrust Quick Connection screen**, close the opened windows.
3. Enter the required information, and then click **Connect**.



NOTE: A window might appear with a certificate message about the remote server. Consult the IT administrator for details and ensure the connection is secure **first**. To import a certificate through a USB flash

drive or a remote server, on Atrust Quick Connection screen, click **Setup**  > **System > Certificate Manager > Add**. To bypass, click **Connect Insecurely**.

4. A Welcome window might appear. Click **OK** to continue.
5. A window appears prompting for the credentials. Enter your user name, password, click the Domain drop-down menu to select the domain, and then click **OK**.



6. A window appears with available desktops or applications for the provided credentials. Double click to select the desired desktop or application.
7. The virtual desktop or application will be displayed on the screen.

Version 1.00

© 2014-15 Atrust Computer Corp. All rights reserved.

Documents / Resources



[Atrust t68L Thin Clientt68L Client VMware Desktop](#) [pdf] User Guide
t68L Thin Clientt68L Client VMware Desktop, t68L, Thin Clientt68L Client VMware Desktop, Cli
entt68L Client VMware Desktop, Client VMware Desktop, VMware Desktop, Desktop

References

- ^{MH}[Search - Manual-Hub.com](#)