



Atrust MT180W Mobile Thin Client Solution User Guide

[Home](#) » [Atrust](#) » Atrust MT180W Mobile Thin Client Solution User Guide 

Atrust MT180W Mobile Thin Client Solution User Guide



Thank you for purchasing Atrust mobile thin client solution. Read this guide to set up your mt180W and access Microsoft, Citrix, or VMware desktop virtualization services quickly. For more information, please refer to the User's Manual for mt180W.

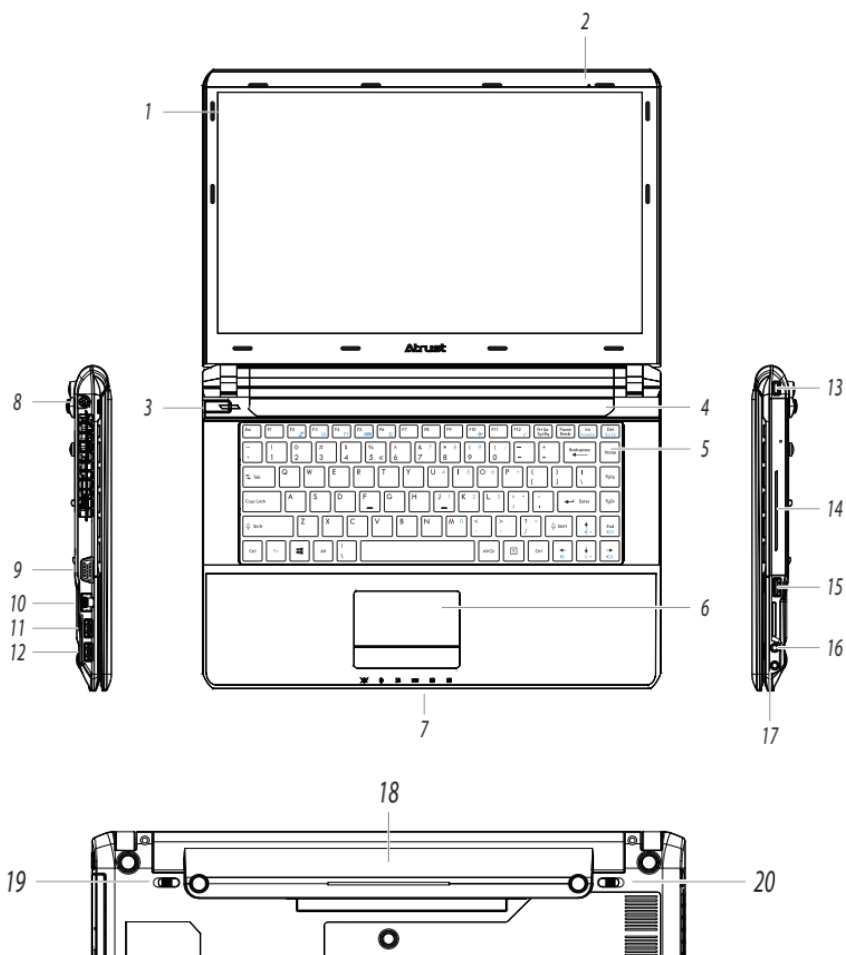
NOTE: Your warranty will be voided if the warranty seal on the product is broken or removed.

Contents

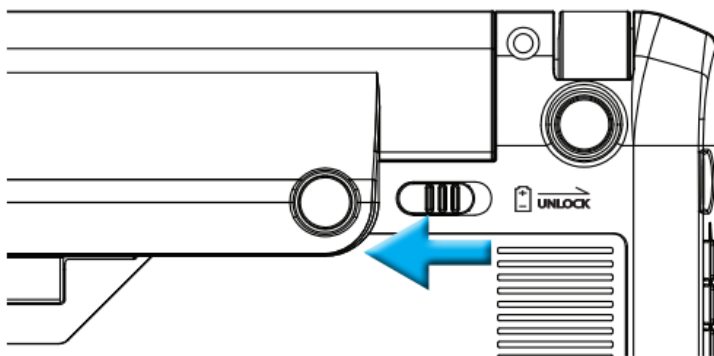
- [1 Exterior Components](#)
- [2 Getting Started](#)
- [3 Service Access](#)
- [4 Accessing Citrix Services with Internet Explorer](#)
- [5 Accessing Citrix Services through the Receiver Shortcut](#)
- [6 Accessing Microsoft Remote Desktop Services](#)
- [7 Accessing VMware View and Horizon View Services](#)
- [8 Documents / Resources](#)
 - [8.1 References](#)
- [9 Related Posts](#)

Exterior Components

1. LCD Display
2. Built-in Microphone
3. Power Button
4. Built-in Speaker x 2
5. Keyboard 19. Left Battery Latch
6. Touchpad 20. Right Battery Latch
7. LED x 6
8. DC IN
9. VGA Port
10. LAN Port
11. USB Port (USB 2.0)
12. USB Port (USB 3.0)
13. Kensington Security Slot
14. Smart Card Slot (optional)
15. USB Port (USB 2.0)
16. Microphone Port
17. Headphone Port
18. Lithium-ion Battery



NOTE: To use the Lithium-ion battery, slide it into the battery compartment until it clicks into place, and then slide left the right battery latch to lock the battery securely.



Slide left completely to ensure the battery is securely locked.

Getting Started

To start using your mt180W, please do the following:

1. Press the Power button on the front panel of your mt180W to turn it on.
2. Your mt180W will log in to Windows Embedded 8 Standard automatically with the default standard user account (see table below for details).




Two Prebuilt User Accounts		
Account Name	Account Type	Password
Administrator	Administrator	Atrustadmin
User	Standard user	Atrustuser

NOTE: Your mt180W is UWF-enabled. With Unified Write Filter, all system changes will be discarded after restart. To change the default, click Atrust Client Setup on Start screen, and then click System > UWF to make changes. A restart is required to apply the changes.

NOTE: To activate your Windows, disable UWF first. Next, move your mouse to the bottom-right corner on the desktop or Start screen, select Settings > Change PC settings > Activate Windows, and then follow the on-screen instructions to complete the task online or offline (by telephone; contact information will be shown on the screen in the process). For details on volume activation, visit <http://technet.microsoft.com/en-us/library/ff686876.aspx>.

Service Access

You can access remote / virtual desktop or application services simply through the default standard shortcuts available on the desktop:

Shortcut	Name	Description
	Citrix Receiver	Double click to access Citrix services. NOTE: If the secure network connection is not implemented in your Citrix environment, you might not be able to access Citrix services through Citrix Receiver of this new version. Alternatively, Citrix allows service access simply through a Web browser. Try to use the built-in Internet Explorer (see instructions below) if you have problems with Citrix Receiver.
	Remote Desktop Connection	Double click to access Microsoft Remote Desktop services.
	VMware Horizon View Client	Double click to access VMware View or Horizon View services.

Accessing Citrix Services with Internet Explorer

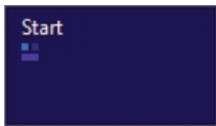
To quickly access Citrix services with the Internet Explorer, just open the browser, enter the IP address / URL / FQDN of the server where the Citrix Web Interface is hosted to open the service page (NOTE: For XenDesktop 7.0 or the later, consult your IT administrator for the appropriate IP address / URL / FQDN).

Accessing Citrix Services through the Receiver Shortcut

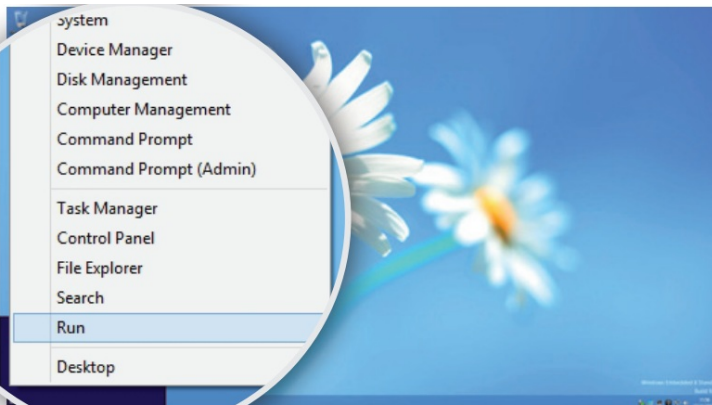
To access Citrix services through the Receiver shortcut, please do the following:

1. With an administrator account, import the required safety certificate for Citrix services. Consult your IT administrator for necessary assistance.

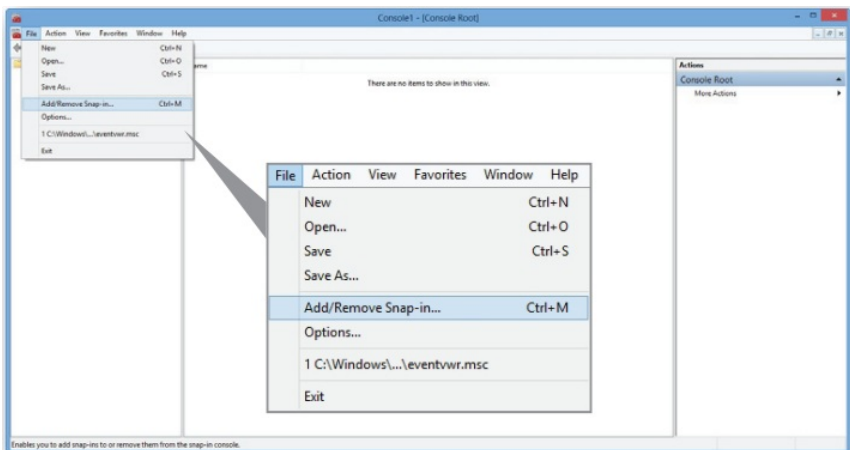
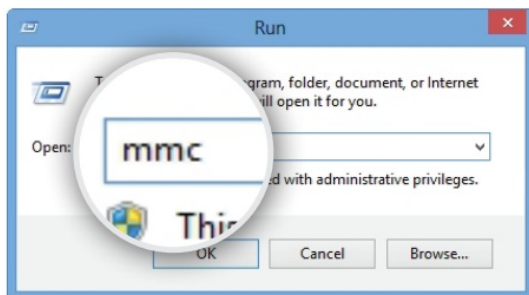
- a. On the desktop, move the mouse to the bottom-left corner, and then right click on the appeared



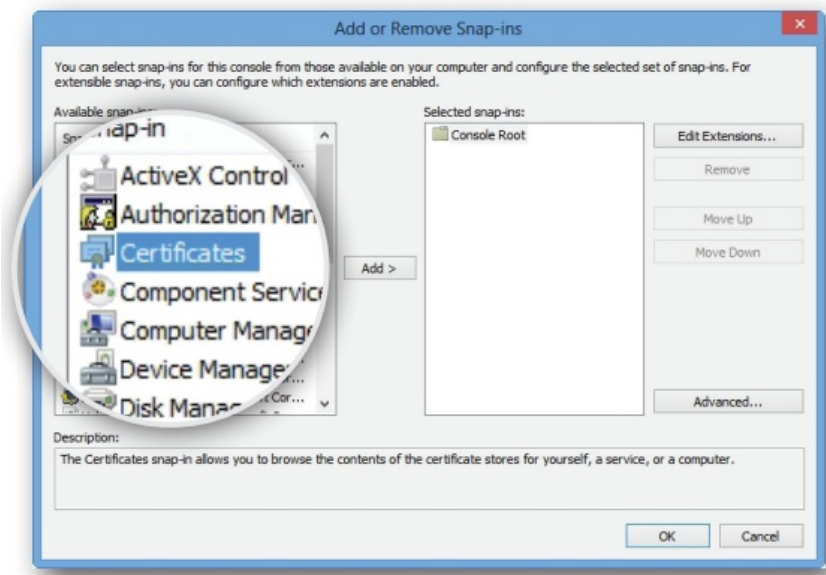
. A popup menu appears.



- b. Click to select Run on that popup menu.
- c. Enter mmc on the opened window, and then press Enter.
- d. On the Console window, click the File menu to select Add/Remove Snap-in.




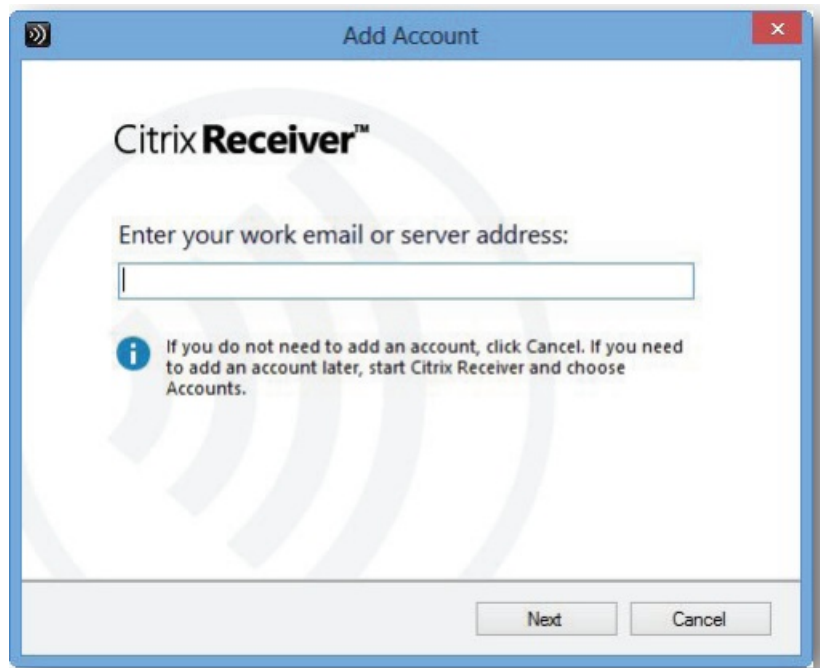
- e. On the opened window, click Certificates > Add > Computer account > Local computer > OK to add the Certificates snap-in.



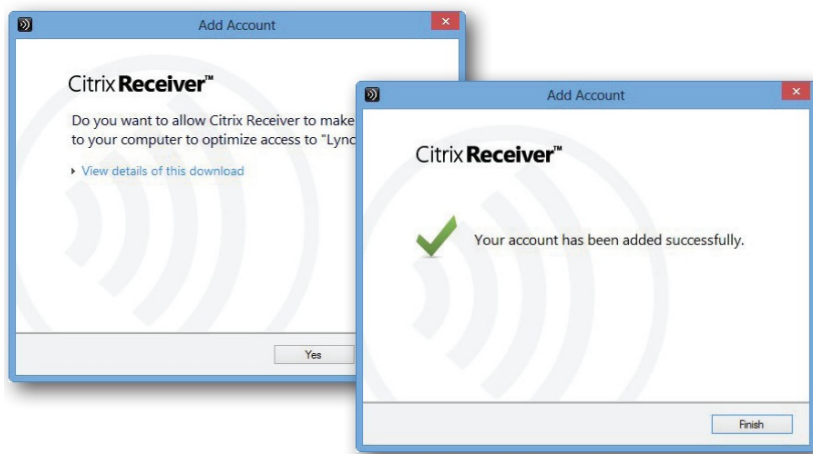
- f. On the Console window, click to expand the group tree of Certificates, right-click on Trusted Root Certification Authorities, and then select All Tasks > Import on the popup menu.
- g. Follow the Certificate Import Wizard to import your certificate, and then close the Console window when it's done.



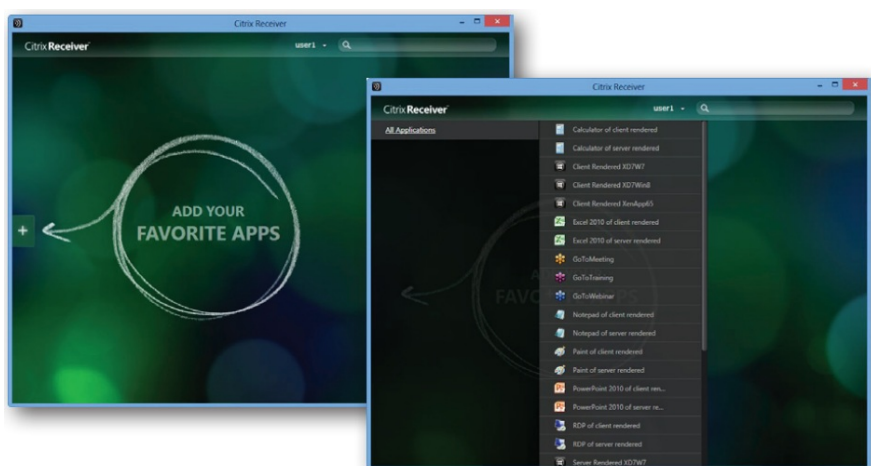
2. Double click the Receiver shortcut  on the desktop.
3. A window appears prompting for the work email or server address. Consult your IT administrator for proper information to provide here, enter the required data, and then click **Next** to continue.



4. . Sign in with credentials for your Citrix services, and then in the opened window, click **Yes** to optimize your Citrix access. When it's completed, success message appears. Click **Finish** to continue.




5. A window appears allowing you to add favorite apps (virtual desktops and applications) for the provided credentials. Click to select the desired application(s). The selected application(s) will appear on that window.

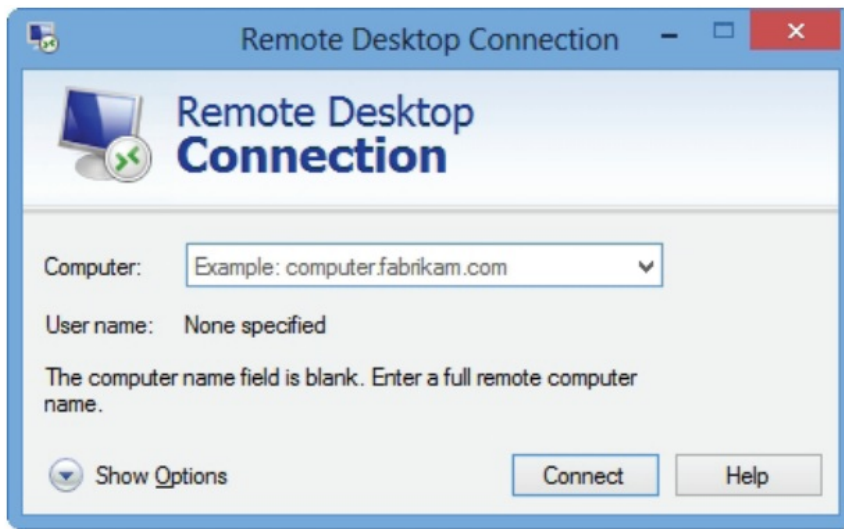


6. Now you can click to launch the desired application. The virtual desktop or application will be displayed on the screen.

Accessing Microsoft Remote Desktop Services


To quickly access Remote Desktop services, please do the following:

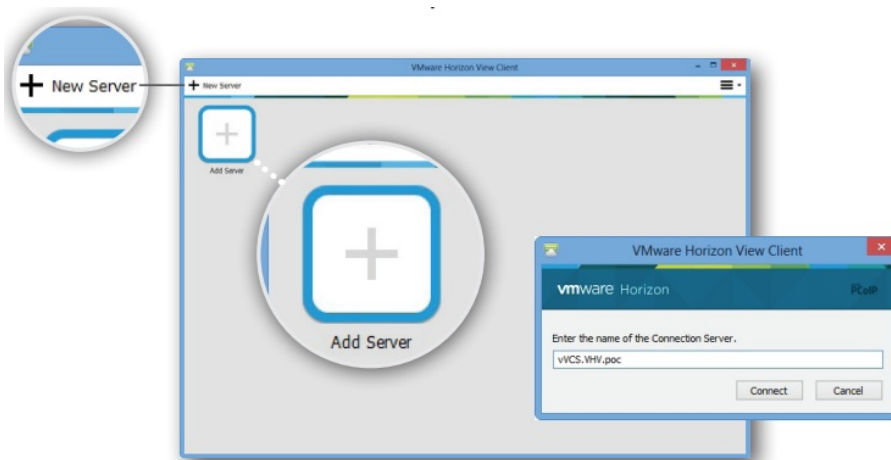
1. Double click the Remote Desktop Connection shortcut  on the desktop.
2. Enter the name or IP address of the remote computer on the opened window, and then click Connect.
3. Enter your credentials on the opened window, and then click **OK**.
4. A window may appear with a certificate message about the remote computer. Consult the IT administrator for details and ensure the connection is secure first. To bypass, click **Yes**.
5. The remote desktop will be displayed in full-screen.



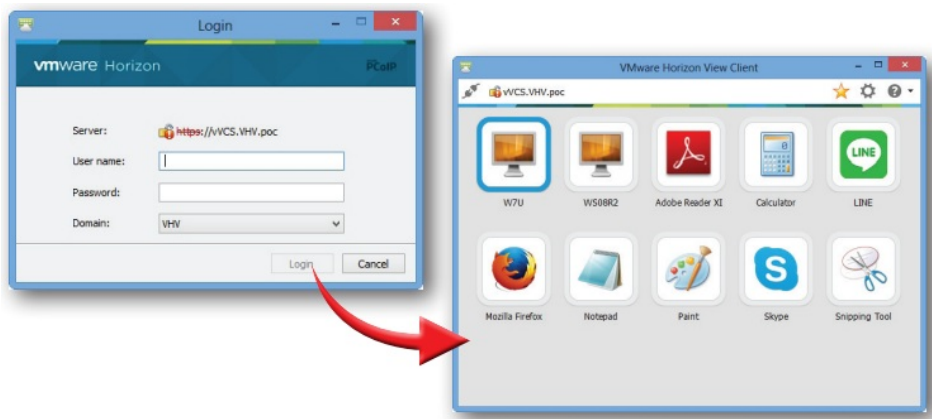
Accessing VMware View and Horizon View Services

To quickly access VMware View or Horizon View services, please do the following:

1. Double click the VMware Horizon View Client shortcut  on the desktop.
2. A window appears allowing you to add the name or IP address of the View Connection Server.
3. Double-click Add Server icon or click New Server in the top-left corner. A window appears prompting for the name or IP address of the View Connection Server. Enter the required information, and then click Connect.




4. A window may appear with a certificate message about the remote computer. Consult the IT administrator for details and ensure the connection is secure first. To bypass, click Continue.
5. A window may appear with a Welcome message. Click OK to continue.
6. Enter your credentials on the opened window, and then click Login.
7. A window appears with available desktops or applications for the provided credentials. Double-click to select the desired desktop or application.






8. The desired desktop or application will be displayed on the screen

Atrust

Documents / Resources

	<p>Atrust MT180W Mobile Thin Client Solution [pdf] User Guide 01, MT180W, MT180W Mobile Thin Client Solution, Mobile Thin Client Solution, Thin Client Solution, Client Solution, Solution</p>
---	---

References

-  [Technical documentation | Microsoft Learn](#)
-  [Managing Activation Using the Volume Activation Management Tool \(VAMT\) | Microsoft Learn](#)
-  [Search - Manual-Hub.com](#)