

Atrust Computer Corp Atrust A66 All In One Thin Client Solution



Atrust Computer Corp Atrust A66 All In One Thin Client Solution User Guide

[Home](#) » [Atrust Computer Corp](#) » Atrust Computer Corp Atrust A66 All In One Thin Client Solution User Guide 

Contents

- [1 Atrust Computer Corp Atrust A66 All In One Thin Client Solution](#)
- [2 Exterior Components](#)
- [3 Getting Connected](#)
- [4 Getting Started](#)
- [5 Configuring the Time Zone](#)
- [6 Accessing Citrix Services](#)
- [7 Accessing VMware View Services](#)
- [8 Documents / Resources](#)
 - [8.1 References](#)
- [9 Related Posts](#)

Atrust

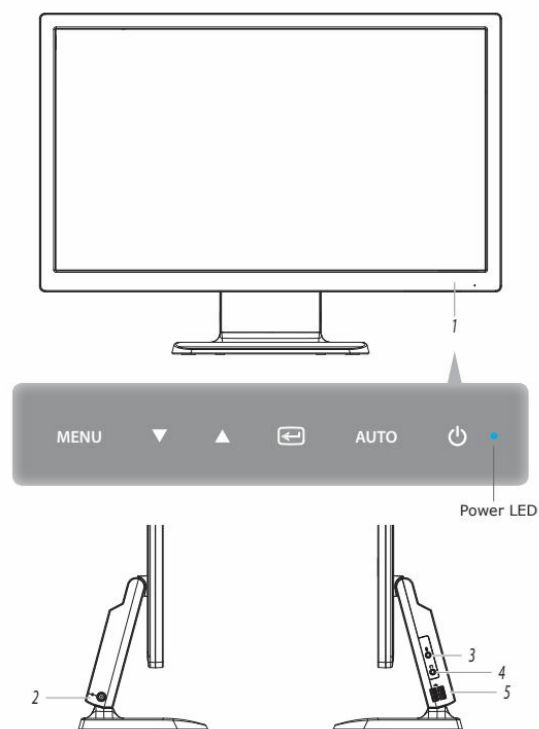
Atrust Computer Corp Atrust A66 All In One Thin Client Solution



Thank you for purchasing the Atrust All-in-One thin client solution. Read this guide to set up your A66 and quickly access Microsoft, Citrix, or VMware desktop virtualization services. For more information, please refer to the User's Manual for A66.

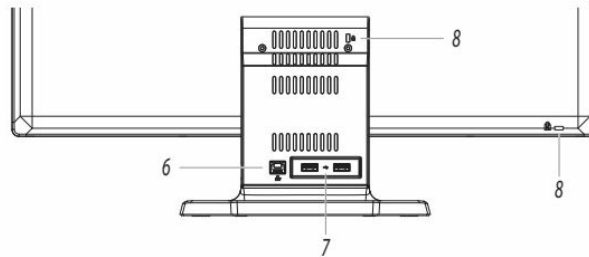
NOTE: Your warranty will be voided if the warranty seal on the product is broken or removed.


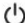
Exterior Components



1. Touch Controls
2. DC IN
3. Microphone Port
4. Headphone Port

5. USB Port x 2
6. LAN Port
7. USB Port x 2
8. Kensington Security Slot x 2



Touch Controls		Description
MENU		<ul style="list-style-type: none">• Tap to enter OSD (On-Screen Display) menu to adjust the display brightness, contrast, OSD language etc.• On OSD menu, tap to return to the previous screen or exit.
▼▲		<ul style="list-style-type: none">• Tap to highlight a setting item on OSD menu.• Tap to decrease / increase the value of a setting item.
		Tap to select a highlighted setting item.
AUTO		Tap to adjust the display brightness.
		<ul style="list-style-type: none">• In Power-off state, tap to turn on your A66.• In Power-on state, tap to enter / exit the Display Sleep mode.• In Power-on state, long press (until the Power LED is off) to force power off your A66.

LED	Signal	Meaning
Power LED	Off	The client is off.
	Blue	The client is on.
		The client is on and the display is in <i>Screensaver / Sleep</i> mode.
	Blue blinking	Blinking pattern - about 2 sec. ON, 1 sec. OFF The client is <i>suspended</i> .


Getting Connected

To make connections for your A66, please do the following:

1. Connect a keyboard and mouse to your A66.
2. Connect the LAN port to your local network with an Ethernet cable.
3. Connect other peripherals to your A66 if needed.
4. Connect the DC IN to a power outlet using the supplied AC adapter.

Getting Started

To start using your A66, please do the following:

1. Tap the Power control  (at the bottom right of the panel frame) to turn on the client. Wait a moment for Atrust Quick Connection screen to appear.
2. Go to 4 to set the time zone for the first-time use.

If the time zone had been set:

- Go to 6 for accessing Microsoft Remote Desktop services.
- Go to 7 for accessing Citrix services.
- Go to 8 to access VMware View and Horizon View services.

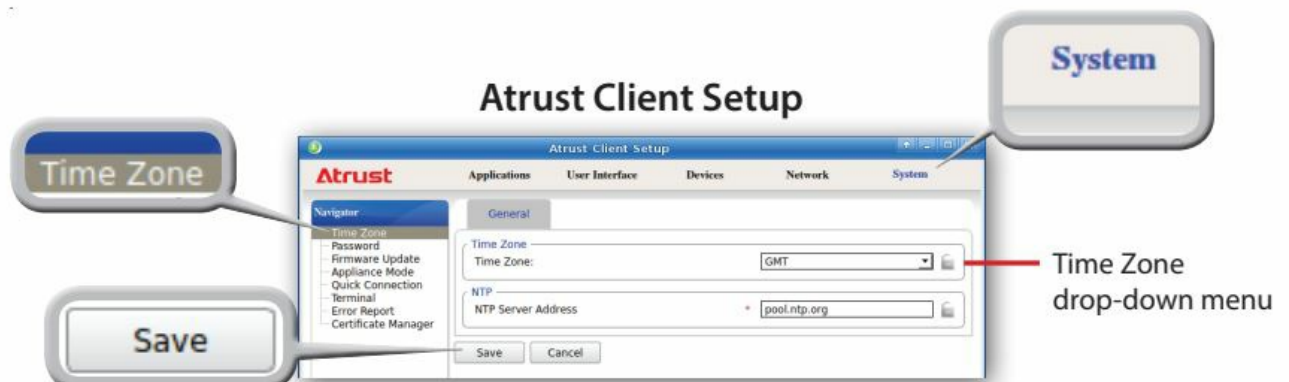


Icon	Description
Power Off	Click the icon to suspend , shut down , or restart the system.
Local Desktop	Click the icon to enter the local Linux desktop. To return to this screen from the local Linux desktop, double-click Atrust Quick Connection on that desktop.
Setup	Click the icon to launch the Atrust Client Setup.
Mixer	Click the icon to configure audio settings.
Network	Indicates the network type (wired or wireless) and status. Click the icon to configure network settings.

Configuring the Time Zone

To set the time zone for your A66, please do the following:

1. Click the Setup  icon to launch Atrust Client Setup.
2. On Atrust Client Setup, click System > Time Zone.



3. Click the Time Zone drop-down menu to select the desired time zone.

4. Click Save to apply, and then close Atrust Client Setup.


Returning to the Quick Connection Screen

To return to the Atrust Quick Connection screen when on a local Linux desktop, please double-click Atrust Quick Connection on that desktop.




Accessing Microsoft Remote Desktop Services

To access Microsoft Remote Desktop services, please do the following:

1. Click  on Atrust Quick Connection screen.
2. On the window, type in the computer name or IP address of the computer, user name, password, and domain (if any), and then click Connect.



NOTE: To discover available MultiPoint Server systems over your network, click , select the desired system, and then click OK. Type in data manually if the desired system cannot be found.

NOTE: To return to Atrust Quick Connection screen, press Esc.

3. The remote desktop will be displayed on the screen.

Accessing Citrix Services

Connecting to the Server

To connect to the server through which virtual desktops and applications are accessible, please do the following:

1. Click on the Atrust Quick Connection screen.
2. On the Atrust Citrix Connection screen, enter the appropriate IP address / URL / FQDN of the server, and then click Log On.

NOTE: FQDN is the acronym of Fully Qualified Domain Name.


Atrust Citrix Connection Screen



NOTE: To return to Atrust Quick Connection screen, press Esc.

Logging On to Citrix Services

When connected, the Citrix Logon screen appears. The appeared screen may vary with the service type and version.

NOTE: A message “This Connection is Untrusted” might appear. Consult the IT administrator for details and ensure the connection is secure first. To import a certificate, click Setup  > System > Certificate Manager > Add. To bypass, click I Understand the Risks > Add Exception > Confirm Security Exception. The following is an example of Citrix Logon screens.

Type the required user name, password, domain, and click **Log On** to access virtual desktops or applications.



This area will display *Citrix XenDesktop* or *Citrix XenApp*, depending on your Citrix service type.


NOTE: To return to the Atrust Citrix Connection screen, press Esc.

NOTE: On Desktop Selection or Application selection screen, you can

- Use the Alt + Tab to select and restore a hidden or minimized application.
- Click Log off on the top of the screen to return to the Citrix Logon screen.
- Press Esc to return to the Atrust Citrix Connection screen directly.

Accessing VMware View Services

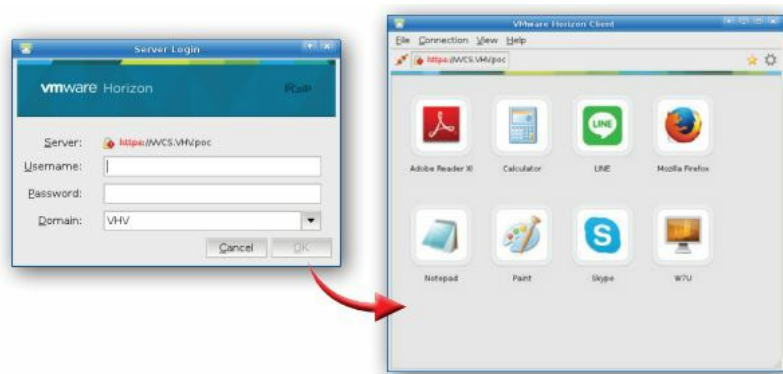
To access VMware View or Horizon View services, please do the following:

1. Click  on the Atrust Quick Connection screen.
2. On the opened window, double-click Add Server icon or click New Server in the top-left corner. A window appears prompting for the name or IP address of the VMware View Connection Server.
NOTE: To return to Atrust Quick Connection screen, close the opened windows.
3. Enter the required information, and then click Connect.



NOTE: A window might appear with a certificate message about the remote server. Consult the IT administrator for details and ensure the connection is secure first. To import a certificate through a USB flash drive or a remote server, on Atrust Quick Connection screen, click Setup  > System > Certificate Manager > Add. To bypass, click Connect Insecurely.


4. A Welcome window might appear. Click OK to continue.
5. A window appears prompting for the credentials. Enter your user name, and password, click the Domain drop-down menu to select the domain, and then click OK.



6. A window appears with available desktops or applications for the provided credentials. Double-click to select the desired desktop or application.
7. The virtual desktop or application will be displayed on the screen.

- 2014-15 Atrust Computer Corp. All rights reserved.

Documents / Resources

	<p>Atrust Computer Corp Atrust A66 All In One Thin Client Solution [pdf] User Guide Atrust A66 All In One Thin Client Solution, Atrust A66, All In One Thin Client Solution, Thin Client Solution, Client Solution, Solution</p>
---	--

References

-  [Manual-Hub.com](https://www.manual-hub.com) - Free PDF manuals!
- [User Manual](#)

Manuals+. Privacy Policy

This website is an independent publication and is neither affiliated with nor endorsed by any of the trademark owners. The "Bluetooth®" word mark and logos are registered trademarks owned by Bluetooth SIG, Inc. The "Wi-Fi®" word mark and logos are registered trademarks owned by the Wi-Fi Alliance. Any use of these marks on this website does not imply any affiliation with or endorsement.