



ATOMSTACK M50 50W Double Ultra-Fine Compressed Spot Laser Module Instruction Manual

[Home](#) » [ATOMSTACK](#) » ATOMSTACK M50 50W Double Ultra-Fine Compressed Spot Laser Module Instruction Manual 

ATOMSTACK

M50 50W Double Ultra-Fine Compressed Spot Laser Module
Instruction Manual





Contents

- [1 Part 1: Security Statment and warning](#)
- [2 Part 2: Disclaimer and warning](#)
- [3 Part 3: Laser Module Instruction](#)
- [4 Part 4: Function description of adapter board](#)
- [5 Part 5: installation steps](#)
- [6 Part 6: Cautions LASER BEAM CAN DAMAGE EYES](#)
- [7 Part 7: Maintenance instructions and warning](#)
- [8 Documents / Resources](#)
- [9 Related Posts](#)

Part 1: Security Statment and warning

Before Using the laser engraving, please read this safety guide carefully, it mentions situations that require special attention and includes warnings of unsafe practices that can cause damage to your property or even endanger your personal safety.

1. This product is a laser engraver system components, must be installed in other manufacturers of laser engraver for And the product belongs to Class 4 laser products, the laser system itself must meet the requirements of IEC 60825-1 latest version, otherwise the product is prohibited to be used.
2. Your laser engraver shall have a protective housing which, when in place, prevents human access to laser radiation.
3. If a protective housing is equipped with an access panel which provides “walk-in” access then:
 - a) means shall be provided so that any person inside the protective housing can prevent activation of a laser hazard that is equivalent to Class 3B or Class 4.
 - b) a warning device shall be situated so as to provide adequate warning of emission of laser radiation equivalent to Class 3R in the wavelength range below 400 nm and above 700 nm, or of laser radiation equivalent to Class 3B or Class 4 to any person who might be within the protective housing.
 - c) where “walk-in” access during operation is intended or reasonably foreseeable, emission of laser radiation that is equivalent to Class 3B or Class 4 while someone is present inside the protective housing of a Class 1, Class 2, or Class 3R product shall be prevented by engineering

NOTE Methods to prevent human access to radiation when persons are inside the protective housing can include pressure sensitive floor mats, infrared detectors. etc.
4. The laser itself has a protective cover, the protective cover is fastened by screws. When the laser is installed

on the laser engraver, the protective cover should be checked to be reliably locked, and can not be removed in the energized state.

5. The housing of the laser engraver should have an interlock function. When the housing is opened or removed, the laser can be automatically turned off.
6. The laser engraver should have an emergency stop button, which can immediately stop the output of the laser when pressed under unexpected circumstances.
7. The laser engraver should have a reset button, which can resume work under the condition of confirming safety after lifting the interlock or emergency stop.
8. Laser engraver should use physical keys, dongle, password system and other ways to manage and control, to prevent personnel without security training operation of this kind of equipment.
9. On the laser engraver any window or channel that can actively observe or passively receive the laser radiation should be set up warning marks.
10. If the laser burns the skin or eyes, please go to a nearby hospital for examination and treatment immediately.

Part 2: Disclaimer and warning

This product is not a toy and is not suitable for people under 15 years of age. Do not allow children to touch the laser Module. Please be careful when operating in scenes with children.

This product is a laser module, visit <http://www.atomstack3d.com/laserengraverdownload> for complete “user manual” and the latest instructions and warnings. Shenzhen AtomStack Technologies Co., Ltd. (Atomstack) reserves the right to update this Disclaimer and Safe Operation Guidelines.

Please be sure to read this document carefully before using the product to understand your legal rights, responsibilities and safety instructions; Otherwise, it may bring property loss, safety accident and hidden danger of personal safety. Once you use this product, you shall be deemed to have understood, accepted and accepted all terms and contents of this document. User undertakes to be responsible for his or her actions and all consequences arising therefrom. User agrees to use the Product only for legitimate purposes and agrees to the entire terms and contents of this document and any relevant policies or guidelines that AtomStack may establish. You understand and agree that AtomStack may not be able to provide you with the cause of the damage or accident and provide you with AtomStack’s after-sale service unless you provide the original engraving or cutting files, engraving software configuration parameters used, operating system information, video of the engraving or cutting process, and Operational steps prior to the occurrence of a problem or failure.

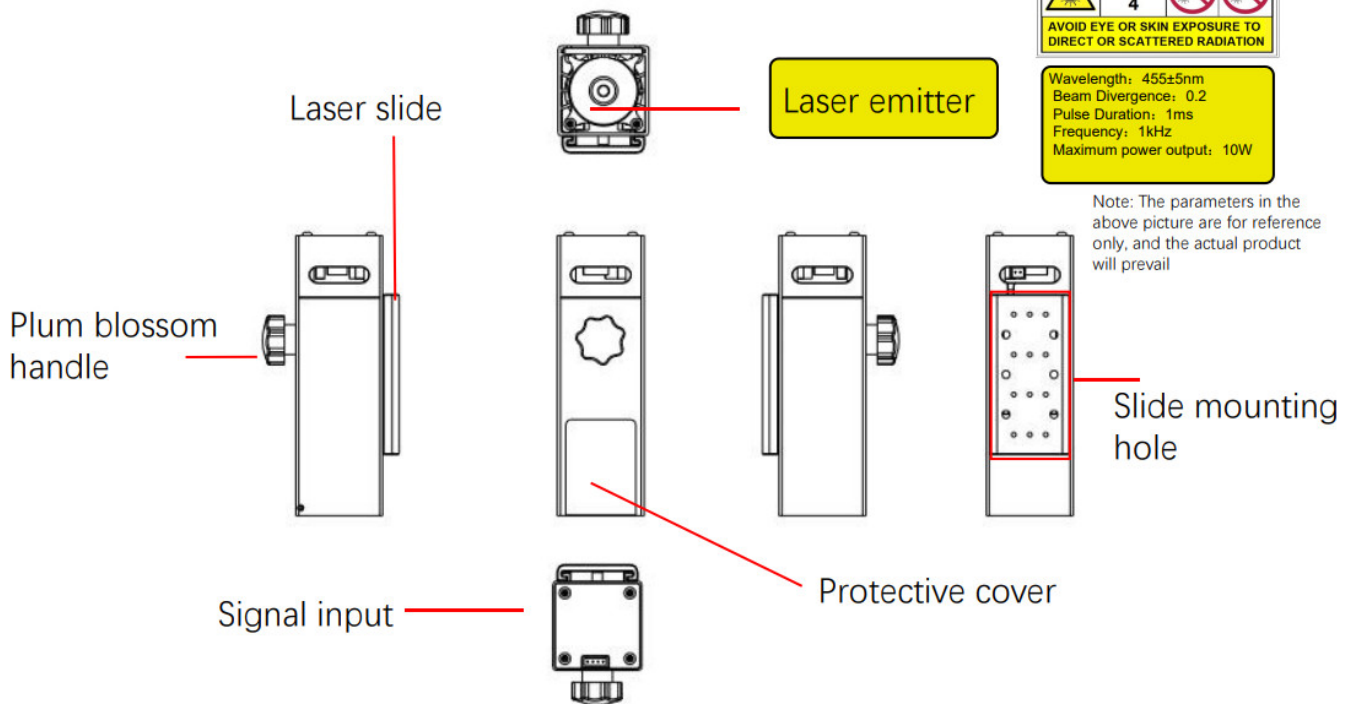
AtomStack is not liable for any and all losses arising from the user’s failure to use the product in accordance with this manual.

Atomstack has the ultimate right to interpret the document, subject to legal compliance. Atomstack reserves the right to update, modify, or terminate the Terms without prior notice.

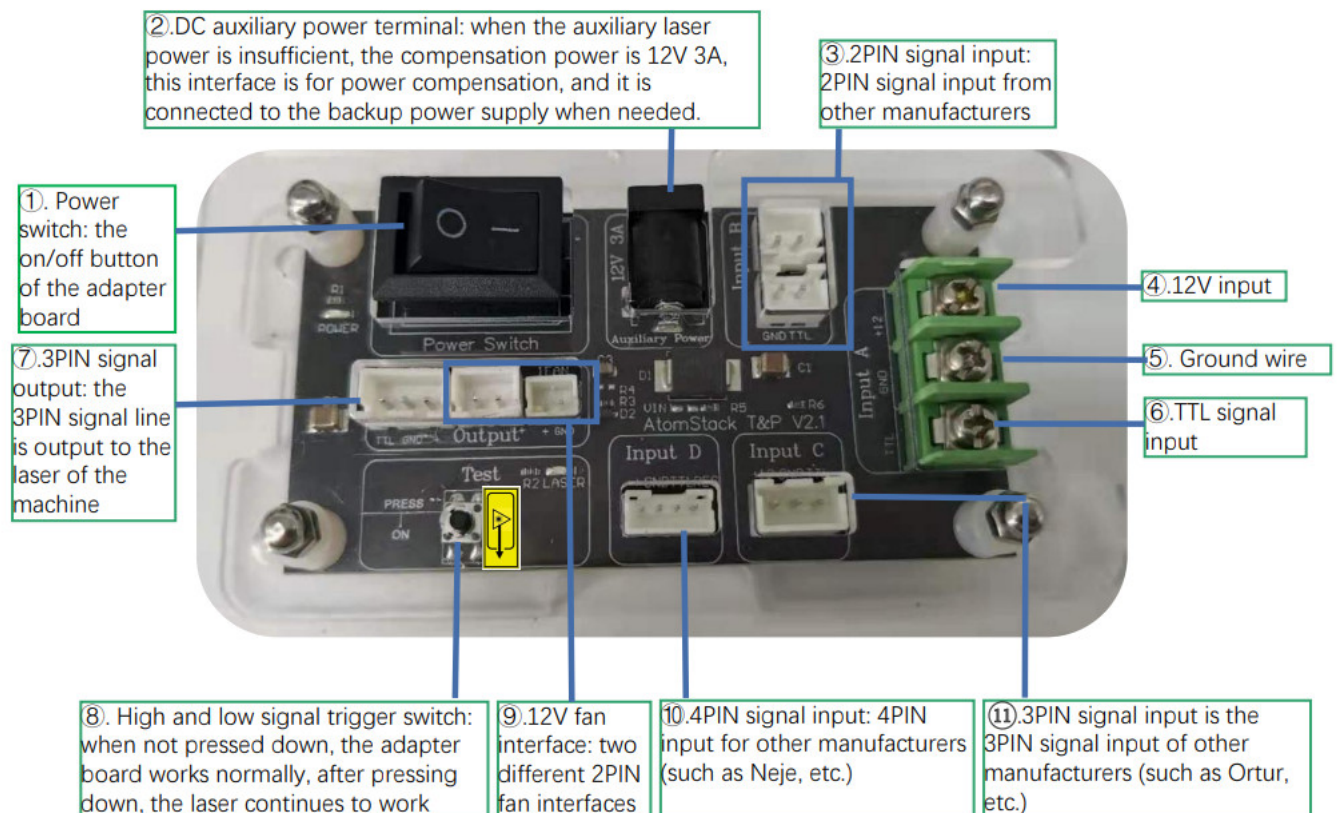
Part 3: Laser Module Instruction



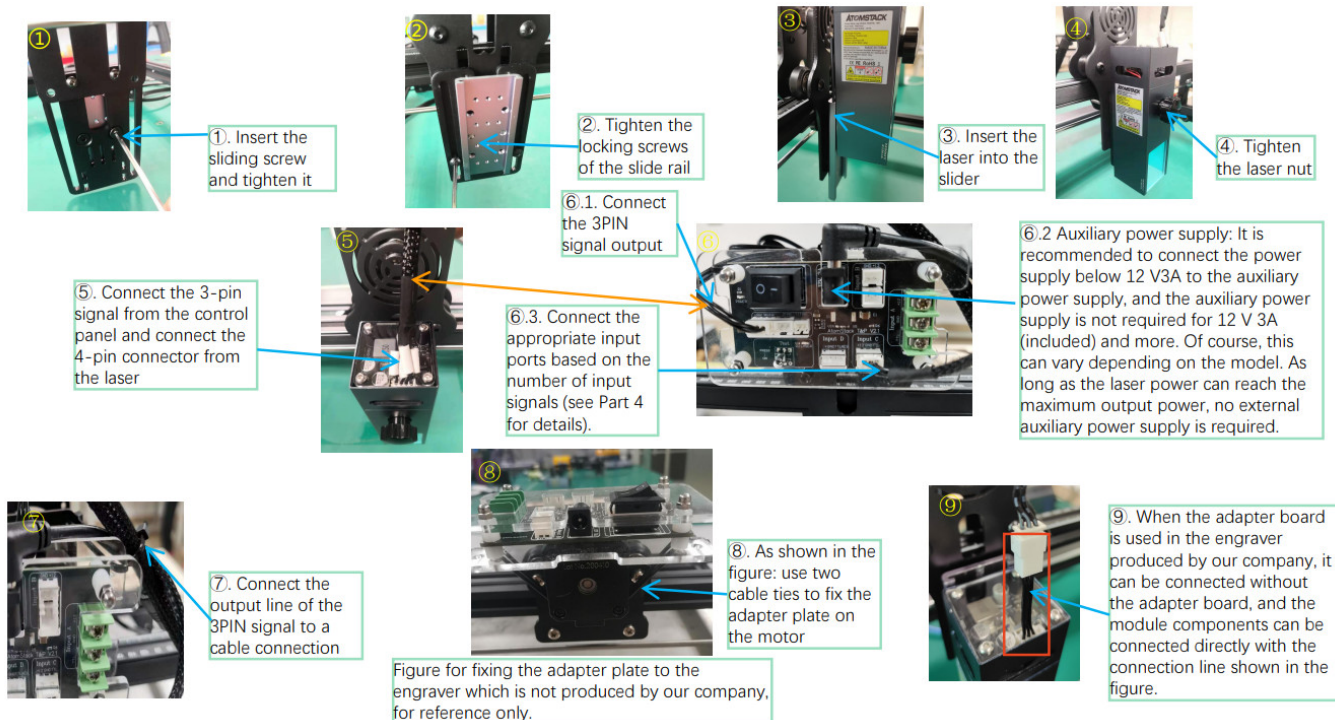
Note: The parameters in the above picture are for reference only, and the actual product will prevail



Part 4: Function description of adapter board



Part 5: installation steps



Part 6: Cautions LASER BEAM CAN DAMAGE EYES

Laser Light can damage the human eyes and skin. Do not expose the eye or skin to laser light directly. This Laser product has an optical lens and emits a collimated laser beam. The light from this product, both direct and reflected, is very harmful as it can propagate a long distance while maintaining high optical density. When handling the product, wear appropriate safety glasses (OD5+) to protect eyes from laser light including reflected and stray light. The reflected and stray light spilling into an unintended area should be attenuated and/or absorbed.

Part 7: Maintenance instructions and warning

This product uses a highly integrated design and requires no maintenance. However, if the laser system installed with this product needs to be repaired or tuned, please:

1. Unplug the power cord on the laser, so that the laser is in a state of power failure;
2. If you need laser assistance for tuning, please:
 1. All present personnel wear protective glasses, ODS+ protective glass is needed ;
 2. Make sure there are no flammable or explosive materials around;
 3. The position and direction of the laser are fixed to ensure that the laser will not accidentally move and shine on people, animals, flammable, explosive and other dangerous and valuable objects during debugging.
 4. Don't look at lasers
 5. Do not shine the laser on the mirror object, lest the laser reflection cause accidental injury.

ATOMSTACK

For detailed warranty policy, please visit our official website at: www.atomstack3d.com

For Laser Engraver technical support and service, please email: support@atomstack3d.com

Manufacturer: Shenzhen AtomStack Technologies Co., Ltd.

Address: AB301,New Chabridge Industrial Park,No.3,Baolong 6th Rd.,Longgang
Dist.Shenzhen,Guangdong,CHINA 518116


Scan the code to enter the engraving machine discussion group

Scanner APPLICATION: QR code reader/Barcode scanner or any APP with scanner



<http://qr71.cn/olsRvn/qOe2nx8>

Documents / Resources

	<p>ATOMSTACK M50 50W Double Ultra-Fine Compressed Spot Laser Module [pdf] Instruction Manual</p> <p>M50, 50W Double Ultra-Fine Compressed Spot Laser Module, Compressed Spot Laser Module , Spot Laser Module, Laser Module, M50, Module</p>
---	---

Manuals+