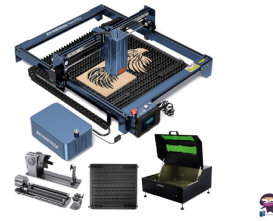


ATOMSTACK A40 Pro Laser Engraving Machine



# ATOMSTACK A40 Pro Laser Engraving Machine User Manual

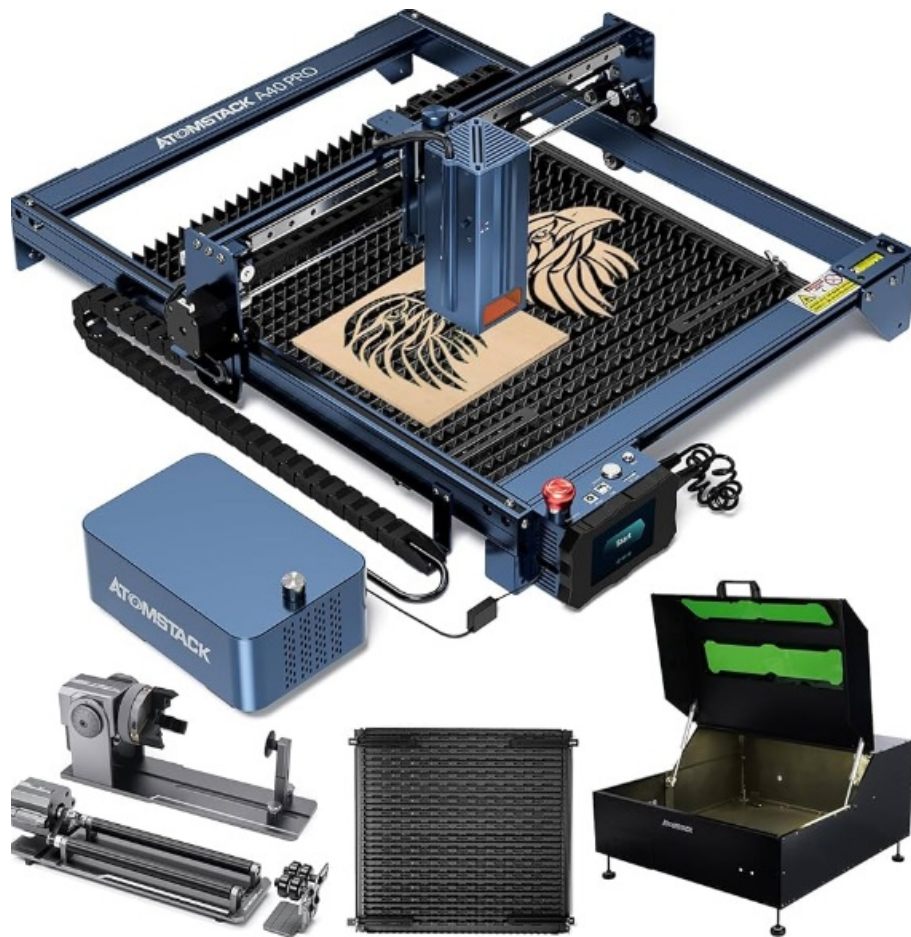
[Home](#) » [ATOMSTACK](#) » ATOMSTACK A40 Pro Laser Engraving Machine User Manual 

## Contents

- [1 ATOMSTACK A40 Pro Laser Engraving Machine](#)
- [2 Product Usage Instructions](#)
- [3 Software Download](#)
- [4 Initial Device Adding/Network Setting](#)
- [5 Devices Switching/Adding](#)
- [6 Functional Description](#)
- [7 Creation/ Engraving](#)
- [8 Search a camera in LAN](#)
- [9 Video Recording](#)
- [10 Camera Reset](#)
- [11 Documents / Resources](#)
  - [11.1 References](#)
- [12 Related Posts](#)



**ATOMSTACK A40 Pro Laser Engraving Machine**



## Specifications

- Device Compatibility: Android, iOS
- Network Support: 2.4 GHz Wi-Fi band

## Product Usage Instructions

### Software Download

Scan the QR codes below with your mobile phone to install the app for Android or iOS.

### Initial Device Adding/Network Setting

1. Go to the APP homepage and click the “Add Engraver” button to start device setup.
2. Note down the Wi-Fi name and password prompted on the page, and click the “Setting up WLAN” button.
3. Select the engraver’s Wi-Fi name in the WLAN page and wait for successful connection.
4. If connection fails, troubleshoot by ensuring the device is powered on, checking phone’s WLAN status, disconnecting from other devices, and turning off mobile data.
5. Once connected successfully, you can control the device remotely via your phone.
6. For a better experience, set up the Wi-Fi network by clicking the “WiFi Setting” button.

### Devices Switching/Adding

1. To switch devices, click on device icons in the Personal Center or add new devices by clicking the “+” button.

## Functional Description

Set up device functions on the APP homepage after connecting. Use the 'Position correction' function to calibrate red cross positioning if misaligned.

## Frequently Asked Questions (FAQ)

- **Q: What should I do if the Wi-Fi connection fails during setup?**

A: If the Wi-Fi connection fails, check the distance between the device and router, ensure operating on 2.4GHz band, and verify correct Wi-Fi password.

- **Q: How can I calibrate the red cross laser if it is misaligned?**

A: Use the 'Position correction' function in the list on the APP homepage to calibrate the red cross positioning.

## Software Download

Scan the QR codes below with your mobile phone to install the app.

Andorid:

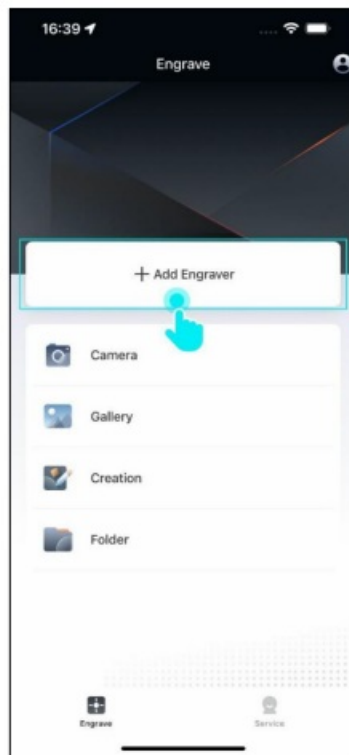


iOS:

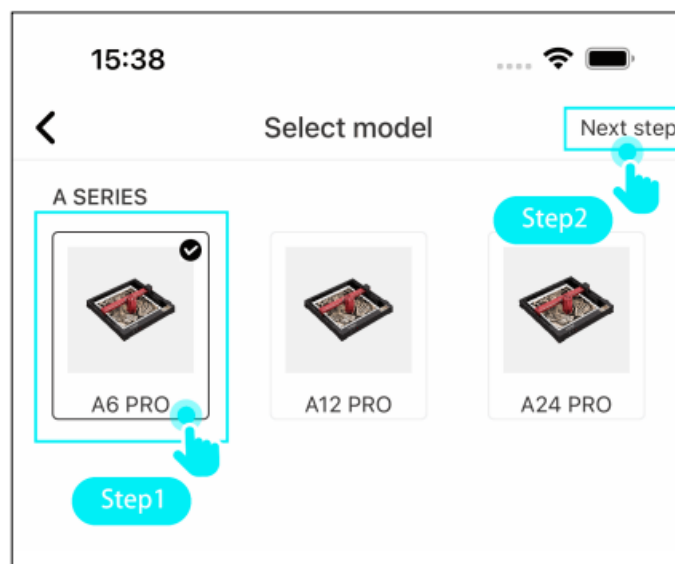


## Initial Device Adding/Network Setting

1. Go to APP homepage, click "Add Engraver" button at the top to start device setup .



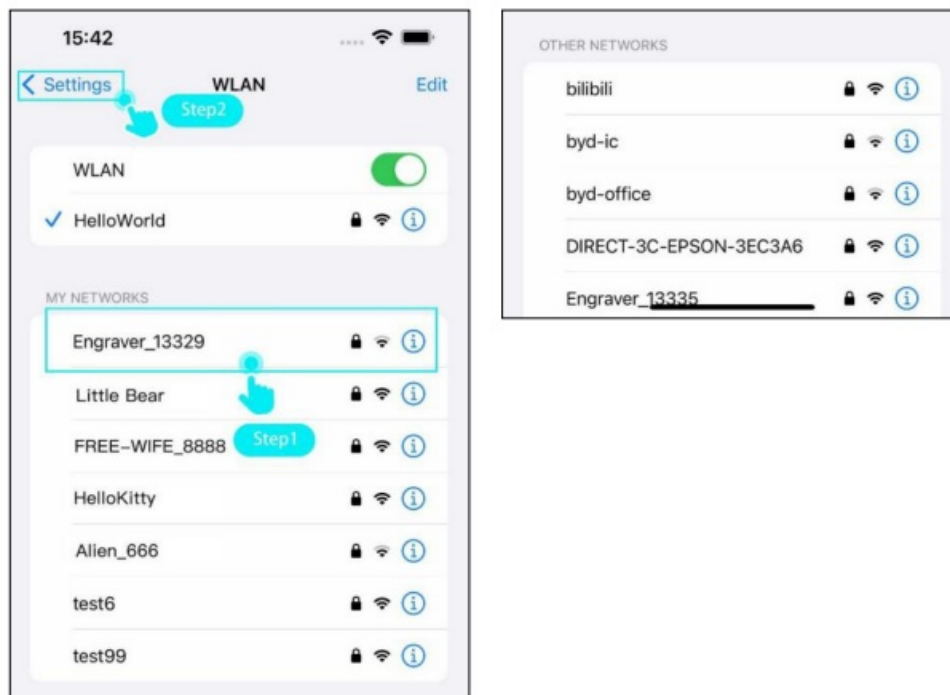
2. Select your device model then click “Next step”.



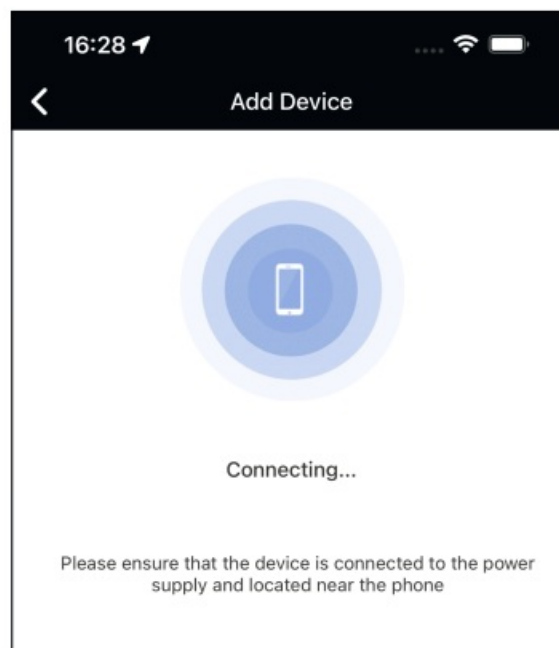
3. Please note down wifi name and password prompted on the page, and click “Setting up WLAN ” button.



4. Select the engraver wifi name in WLAN page. After the engraver wifi is successfully connected, click the “Back” button in the upper left corner to return to APP homepage .



5. Appreciate your patience for the phone establishing a connection with the device, and try to keep the phone as close to the device as possible.

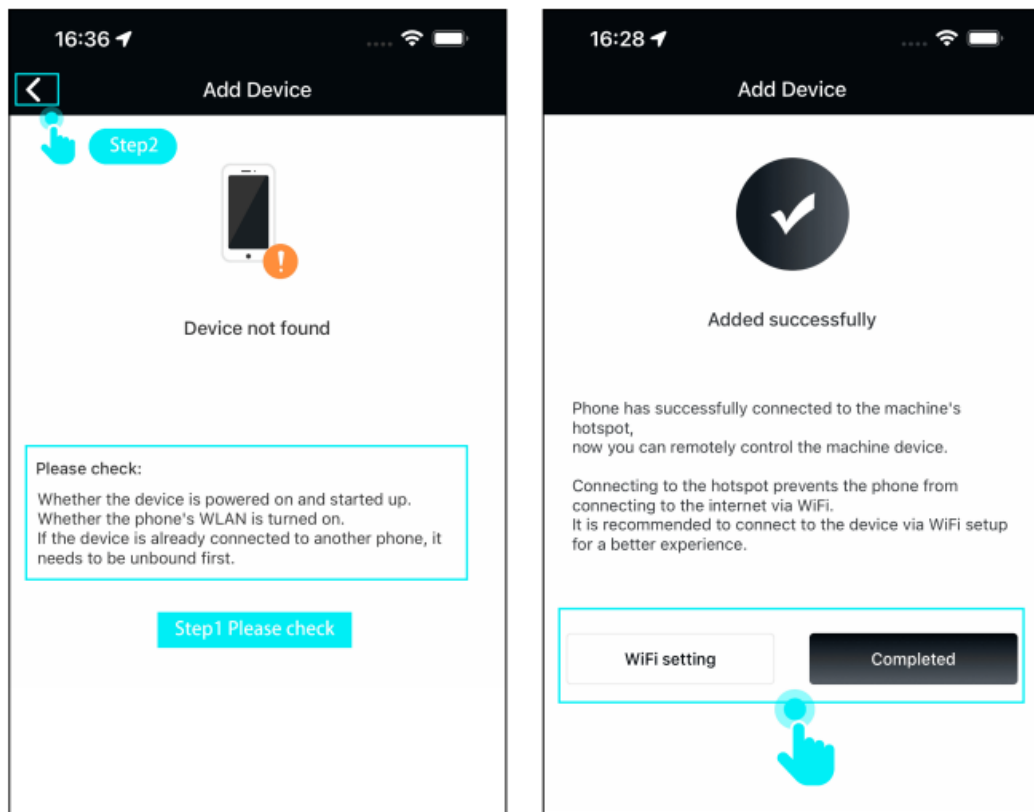


6. Please check the followings if the connection fails :

- Whether the device is powered on and started up.
- Whether the WLAN on your phone is enabled.
- If the device has been connected to another phone, you need to disconnect that phone's connection first.
- Turn off the mobile data on your phone.
- Please try restarting the device and try again.

The prompted "Added successfully" means that your phone has successfully connected to the device, and now you can control the device remotely via your phone. If the device's working environment supports a WiFi network, we recommend setting the WiFi network for a better experience.

If you do not need WiFi setting, you can directly click the "Completed" button to return to the APP homepage. If you need to set the WiFi, click the "WiFi Setting" button, and the WiFi setting introduction is followed.



7. Click “WiFi setting”, enter the correct WiFi name and password then click “Next” button.

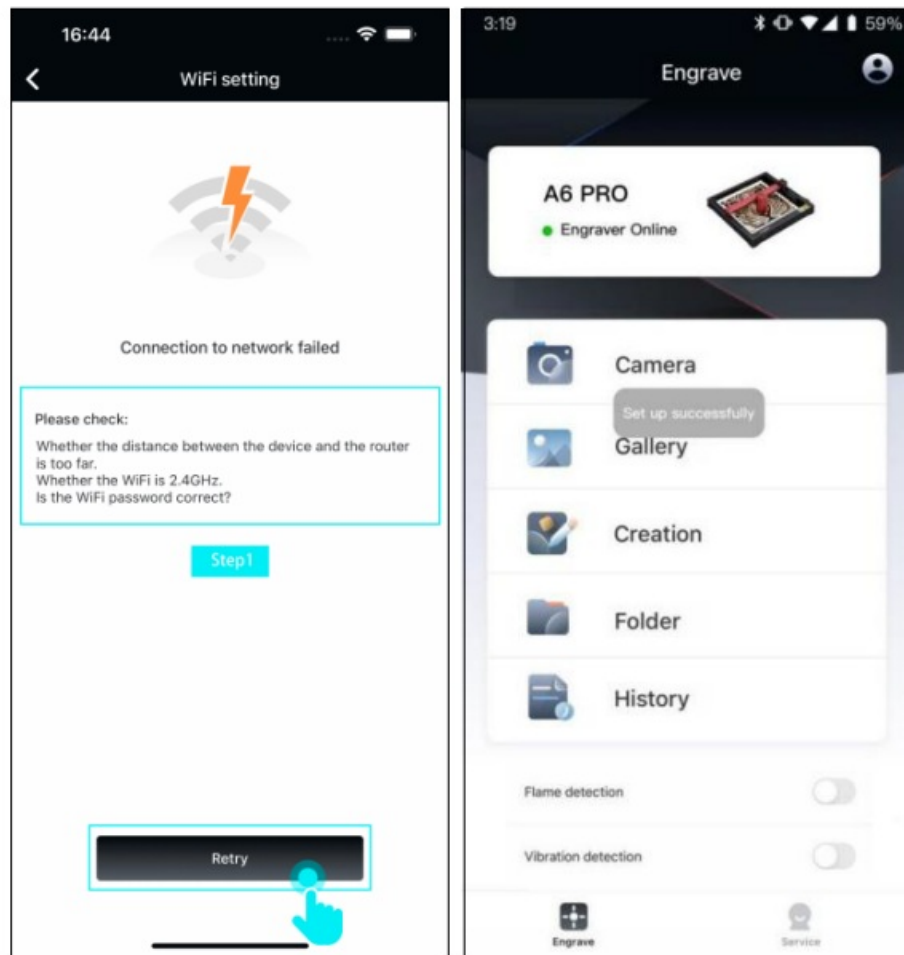
**Note :** WIFI setting only supports connections on the 2.4 GHz Wi-Fi band.



8. If it prompts “Connection to network failed”, please check followings, click “Retry” button to redo WiFi setting.

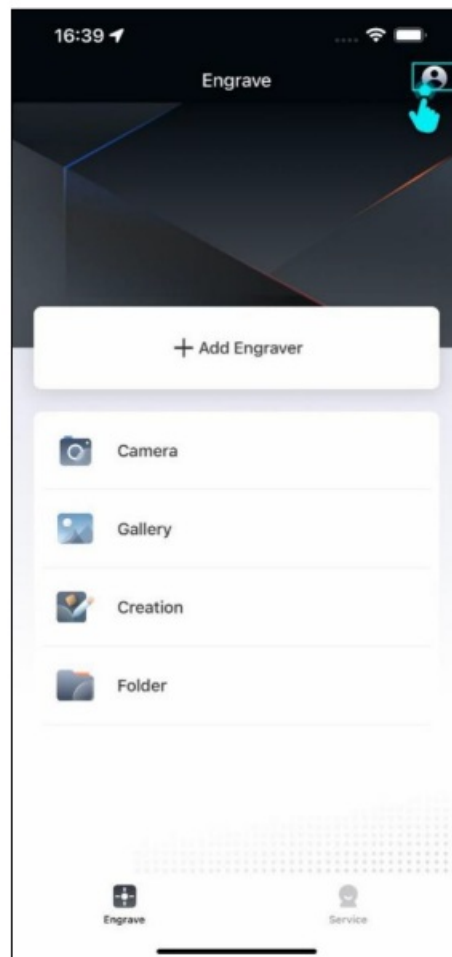
- Check if the distance between the device and the router is too far. Check if the WiFi is operating on the 2.4GHz band.
- Check if the WiFi password is correct.
- When WiFi setting is successful, it switches to APP homepage, and users can remotely control the device

via WiFi from phones.

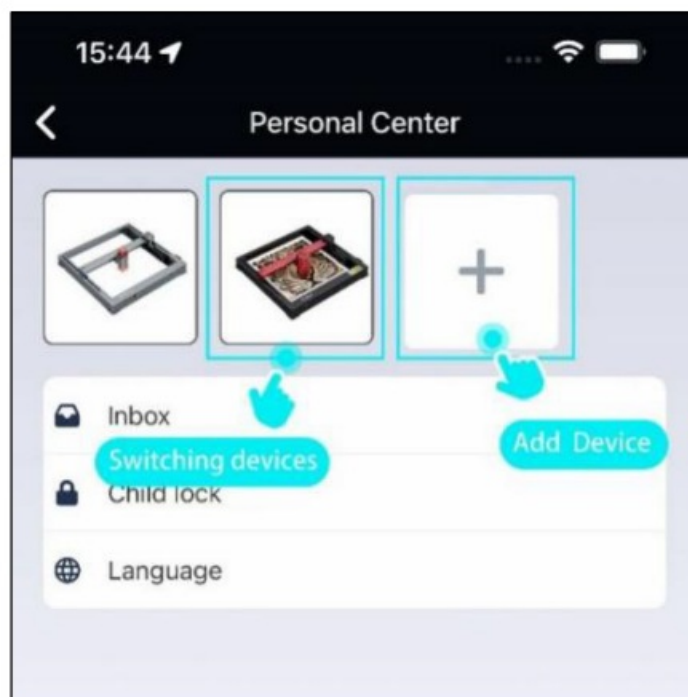


## Devices Switching/Adding

1. If you need to replace a device that has been previously connected, you can click “Personal Center” button at the top right corner of APP homepage.



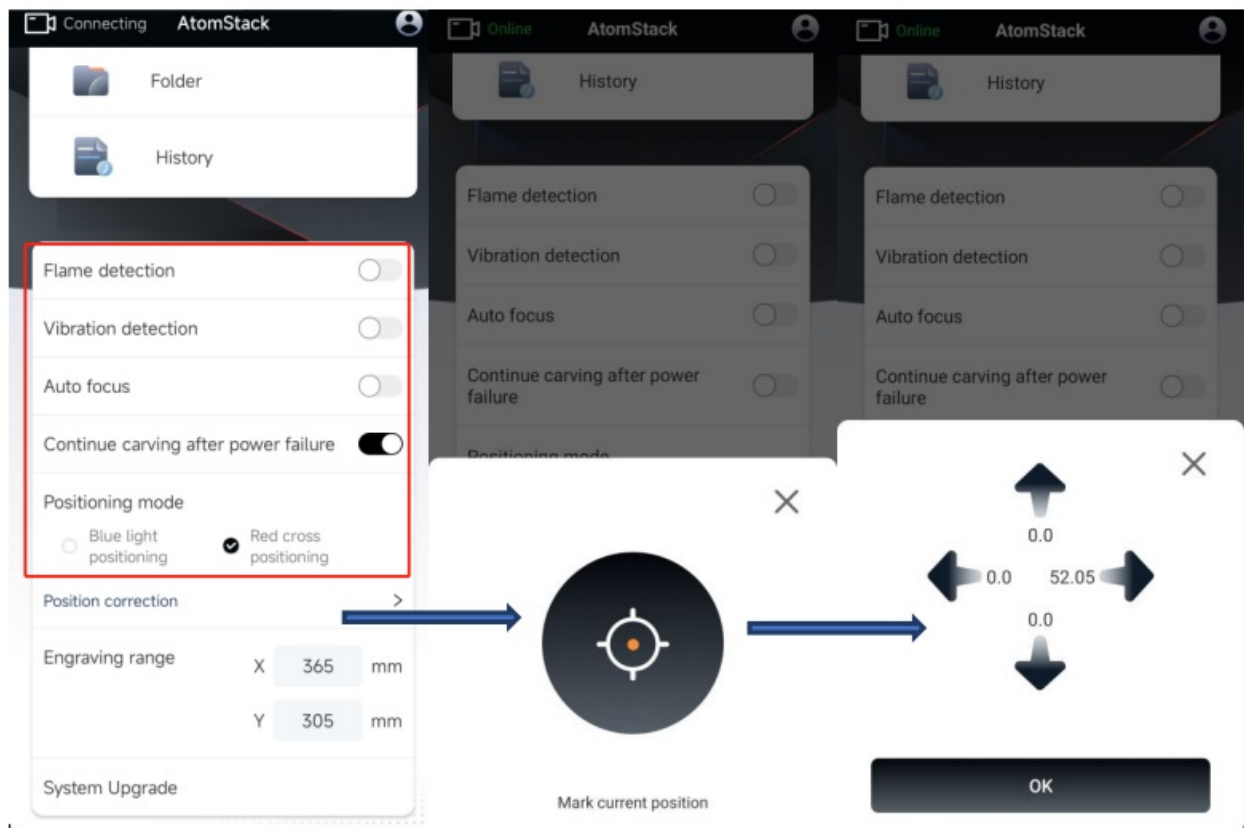
2. All previously added devices are displayed at the top, you can click on these device icons to switch between devices. Alternatively, click “+”button to add new devices.



## Functional Description

You can set up device functions on APP homepage after the device is connected. If your device does not support a particular function, that option will not be displayed on homepage. When your red cross laser is misaligned, you can use 'Position correction' function in list to calibrate the red cross positioning.





**Flame** detection: When enabled, it triggers when a fire occurs directly below the laser. Laser module automatically returns to the origin, and buzzer sounds. Machine resumes to work after restarting. (If supported)

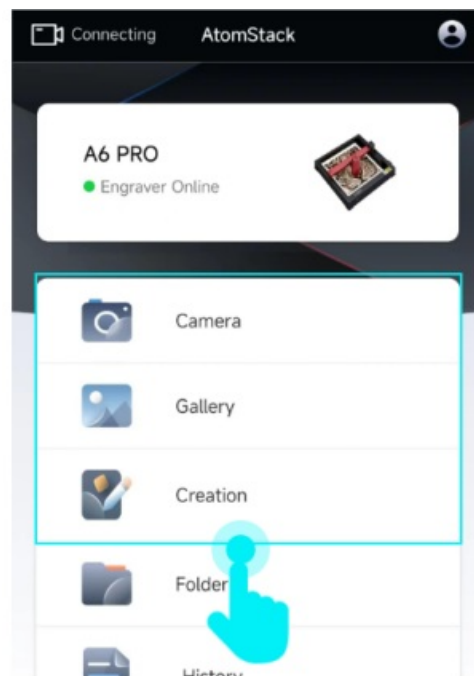
**Auto-focus:** After enabling, the machine will automatically focus before engraving, and then engrave after focusing. (If supported)

**Tilt** detection: When enabled, it triggers when the angle between the machine and the horizontal plane is between 15° and 20°. Machine automatically stops working, and buzzer sounds. Click “confirm” on display screen to dismiss the alert. (If supported)

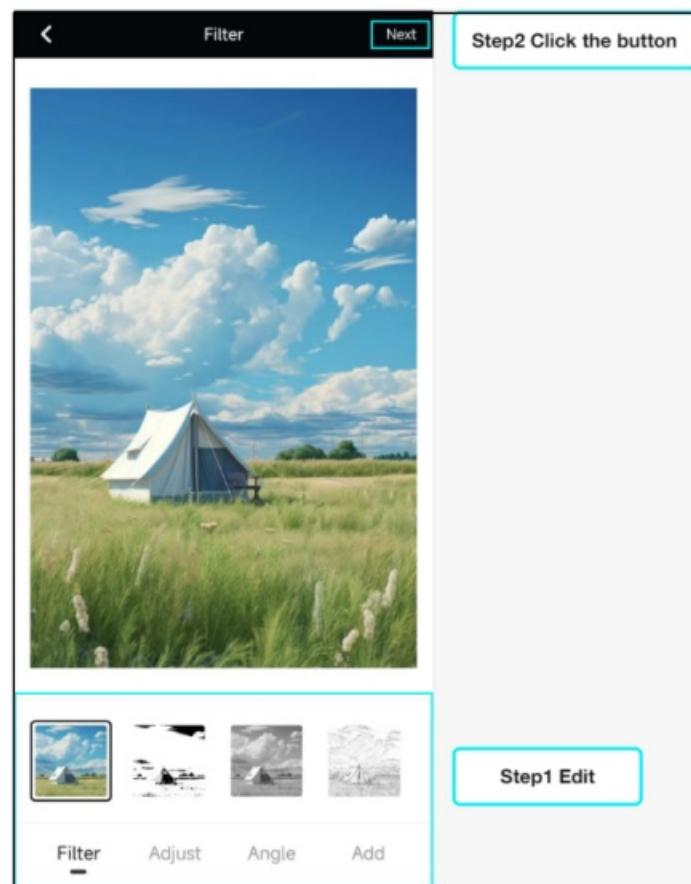
**Resume** Engraving upon Power Failure Recovery: When enabled, if machine stops due to a power outage during engraving, the unfinished engraving work can be continued after reconnecting the machine. (If supported)

## Creation/ Engraving

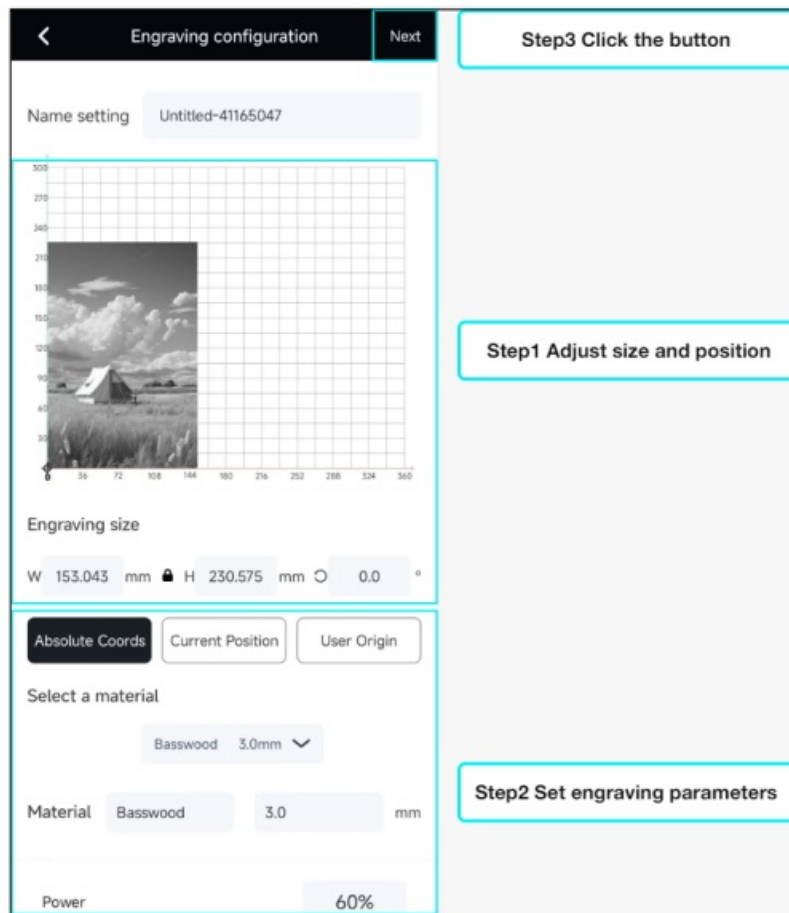
1. You can create your engraving works by Photoing/Importing album pictures/Starting from scratch in APP homepage.



2. In the creation page, you can add filters, adjust colors, and rotate images. You can also add text, materials, and barcodes to the workspace, click “Next” button in the upper right corner of the page after creation is completed.



3. In engraving configuration page, you can set dimension, position, materials, engraving parameters, etc. click “Next” button in the upper right corner of the page after configuration is completed **Attention:** U disk or TK card needs to be inserted to device before engraving.

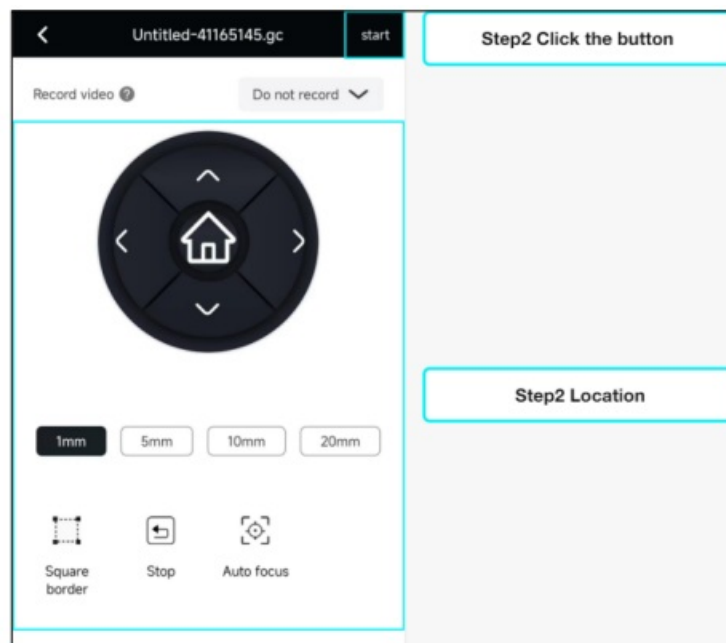


- **Starting Position:**
- **Absolute Coordinates:** Engrave based on the object's coordinates on the workspace, corresponding to the coordinates on the material.
- **Current Position:** Engrave based on the current coordinates of the laser as the starting position.
- **User Origin:** Engrave based on the user-set origin coordinates as the starting position.

Material Selection:

You can automatically load preset engraving parameters by selecting official preset materials.

- **Power:** Engraving power used for this layer.
  - **Speed:** Engraving speed used for this layer.
  - **Air Assist:** Enable air assist (if supported).
  - **Passes:** Number of repetitions for engraving on this layer.
  - **Cutting Start Z-axis Down Distance:** The distance the laser Z-axis descends before cutting begins (if supported).
  - **Z-axis Down Distance After Each Cut:** The distance the laser Z-axis descends after each cut (if supported).
  - **Line Interval:** The spacing between consecutive lines when engraving with the laser.
  - **Engraving Direction:** Set the engraving direction for bitmap engraving, with options for "Horizontal" and "Vertical".
  - **Bidirectional Engraving:** Set the engraving mode for bitmap engraving, with "Bidirectional" for higher efficiency but lower quality, and "Unidirectional" for lower efficiency but better quality.
4. In the move page, you can control laser to move along the X/Y axis, set the origin, frame, and fire. When ready, click "Start" to engrave.

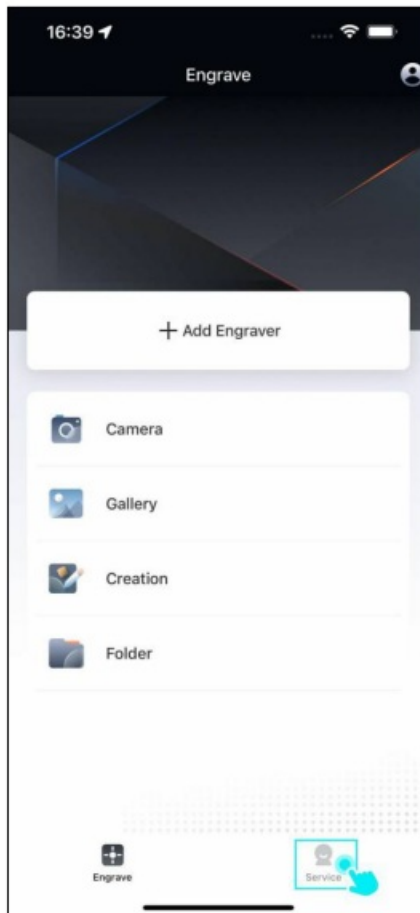


- Rectangle Border: Laser will move along the rectangular boundary of the pattern on the material so that you can preview the engraving area. Stop: Forcefully stop any movement of the laser.
  - Set Start from: Set laser to start engraving from the current coordinates of the laser.
  - Move to Start Point: Move laser to the user-defined starting point. Set as Center: Set the current coordinates of laser as the engraving center.
  - Move to Center: Move laser to the user-defined center point. Distance: Distance of the laser's movement on X/Y axis .
  - Fire: Test the laser output at different power levels.
  - Focus: Auto focus laser on Z-axis. (If supported)
5. Go to engraving page, you can adjust the current engraving power/-speed in real time, or pause/stop the current engraving project. It prompts finish on page after project is completed .

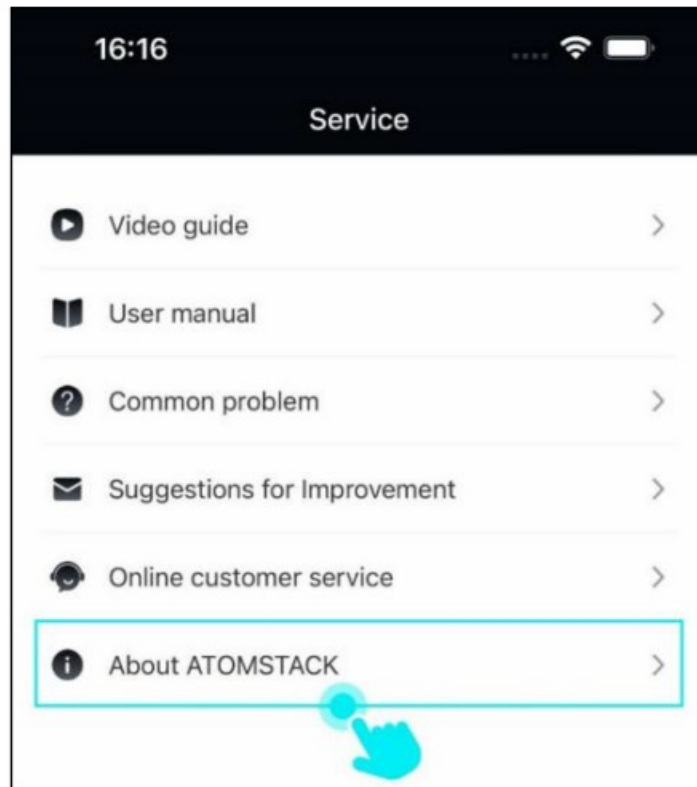


## 6. Software update

1. Click the “Service” button at the bottom right corner of APP homepage.



2. Click "About ATOMSTACK" button.

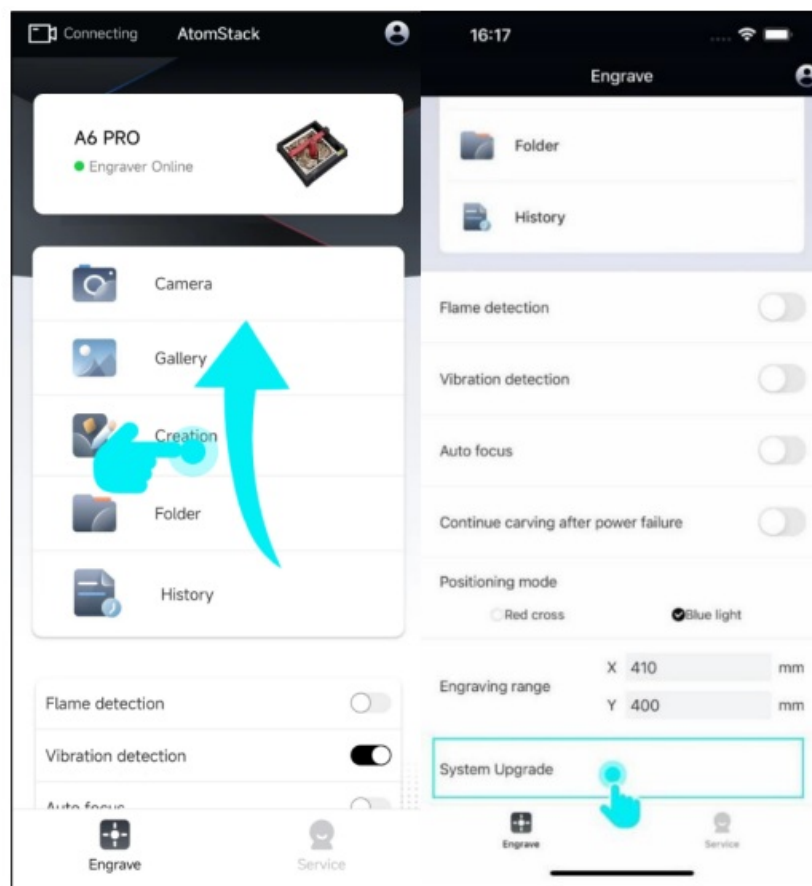


3. Click “Software Version” to check if current software version is the latest one, you will be prompted to update the software if there is a new version available.

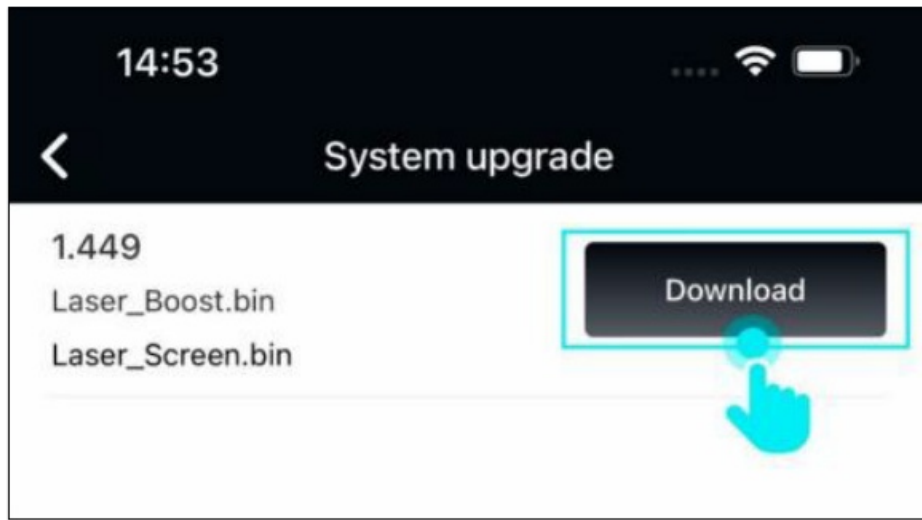


## Firmware update

1. After the device is added successfully, drag upward on the APP homepage and click the “System Update” button at bottom of the list.

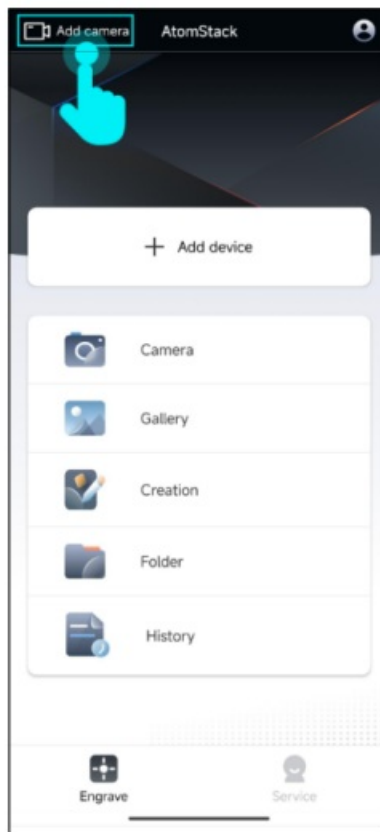


2. If the system detects a new firmware version which can be updated, the firmware version information displayed is list, click “Download” button to update the firmware.

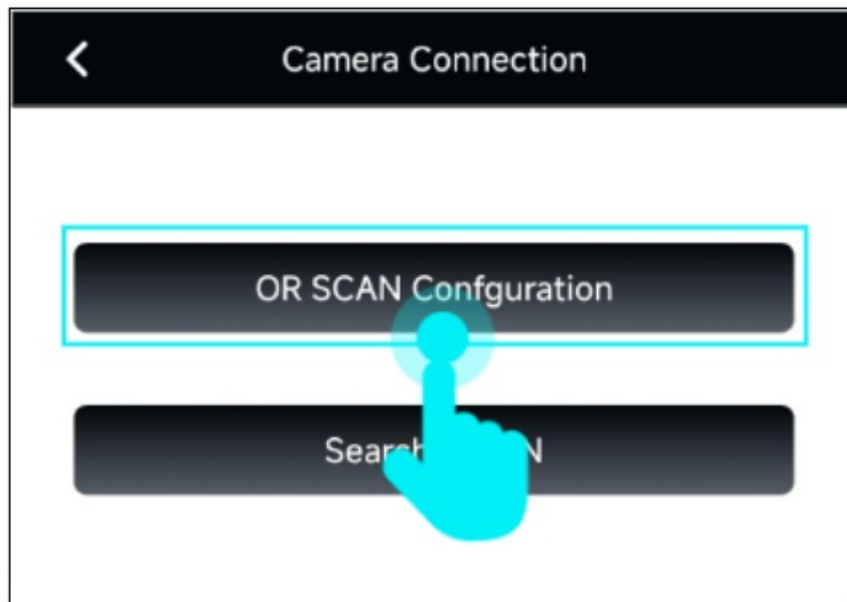


### Add a camera

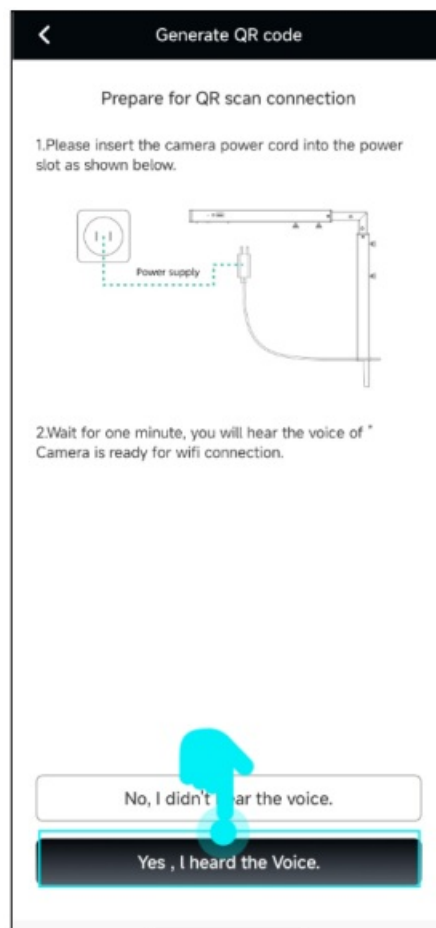
1. Go to APP homepage, click “Add camera” button in the upper left corner to start adding a camera.



2. Click “QR SCAN Configuration” on Camera Connection page.

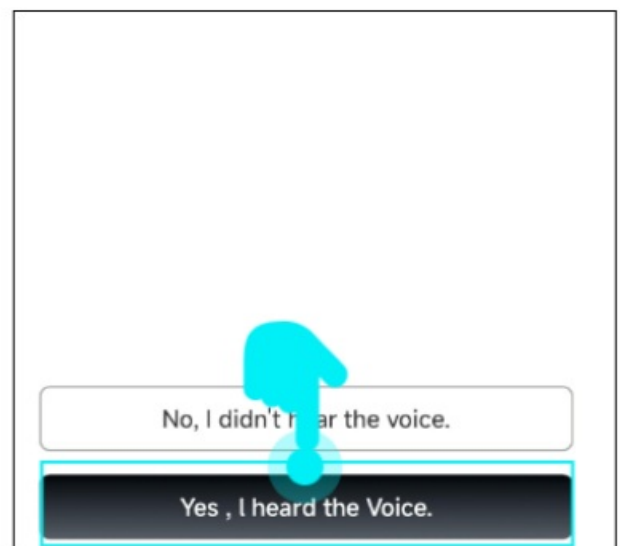
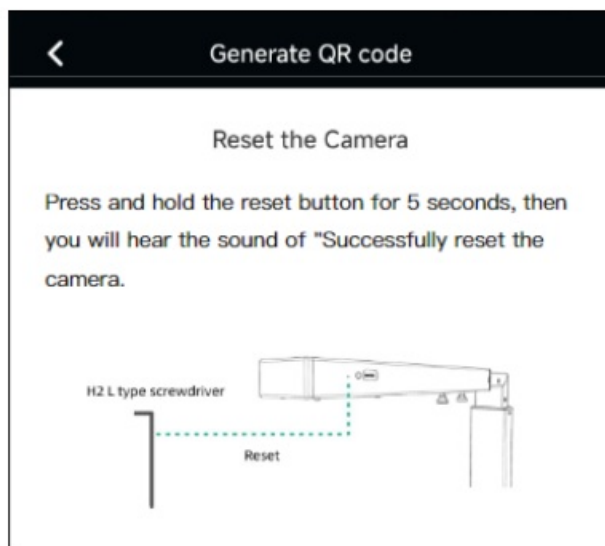


3. Connect the camera power cord to the power slot and wait for one minute. You will hear the voice of “Camera is ready for WiFi connection”, click “Yes, I heard the Voice”.

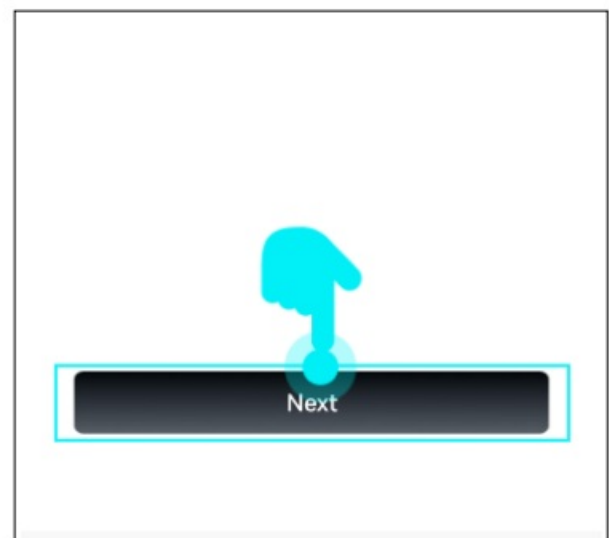


If you don't hear the voice of “Camera is ready for WiFi connection”, you need to follow the prompts to reset the camera till you hear the voice of “Successfully reset the camera.”, click “Yes, I heard the Voice” button to redo the camera addition steps.



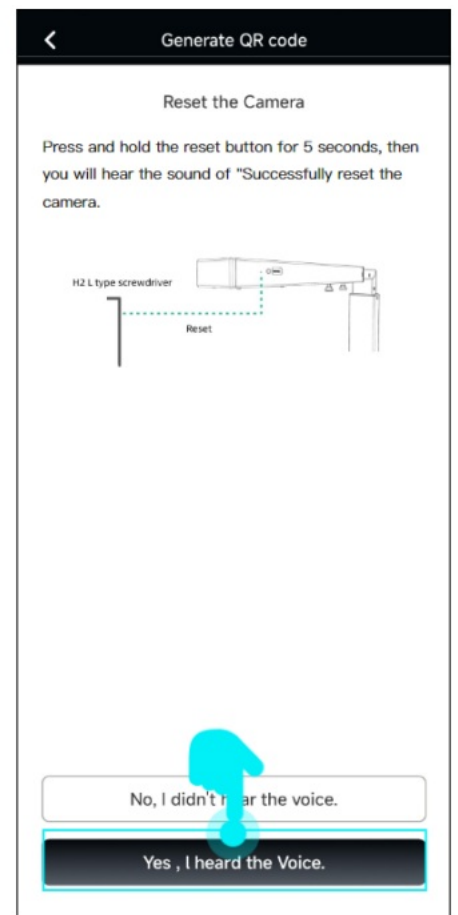


4. Fill in WiFi name and password and click "Next" on WiFi setting page.

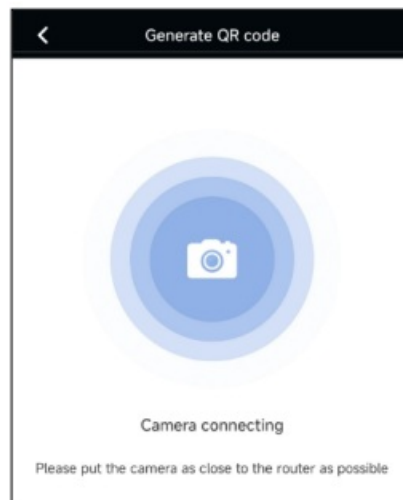


5. Align the QR code generated on your phone to the camera and keep it at a distance of about 10-20cm. Then you will hear a beep sound, click "Yes, I heard the Voice".

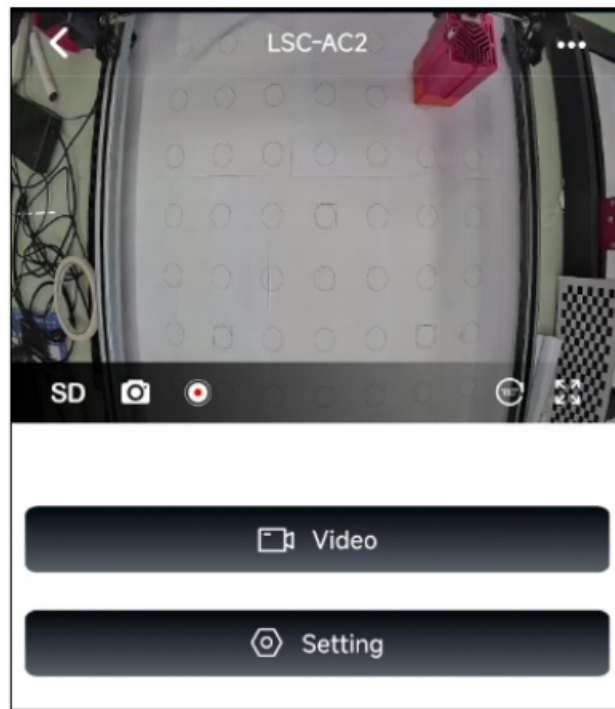
If you don't hear the beep sound, you need to follow the prompts to reset the camera till you hear the voice of "Successfully reset the camera.", click "Yes, I heard the Voice" button to redo the camera addition steps.



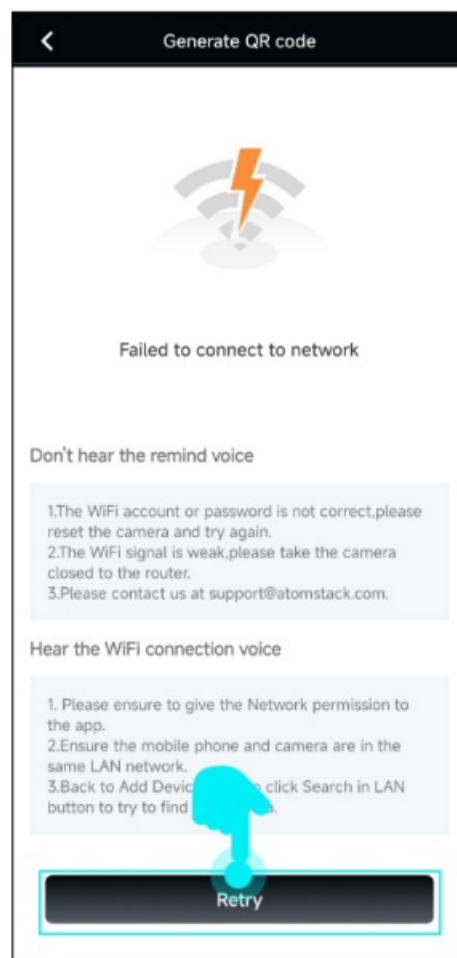
6. Please place the camera as close as possible to the router and wait for the WiFi configuration result.



7. WiFi configuration is successful, page switches to camera setting, now you can fully use various functions.

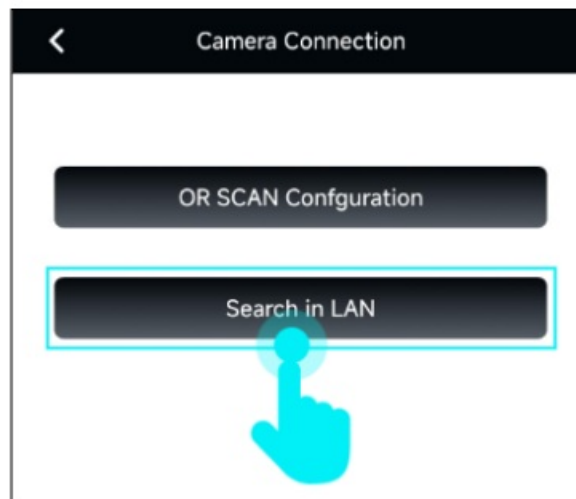


If the WiFi configuration fails, you need to troubleshoot as per the checklist prompted, click “Retry” button below to redo WiFi setting after completing troubleshooting.

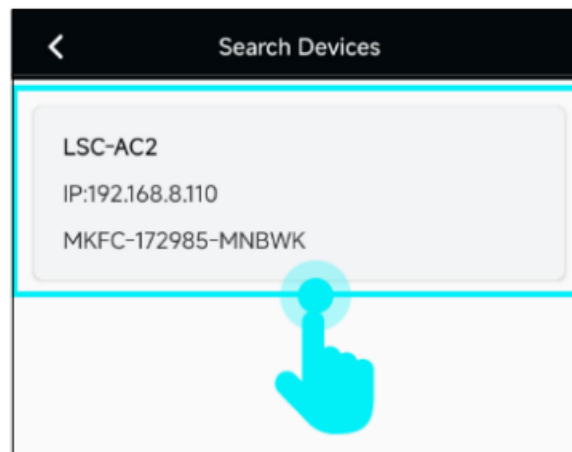


## Search a camera in LAN

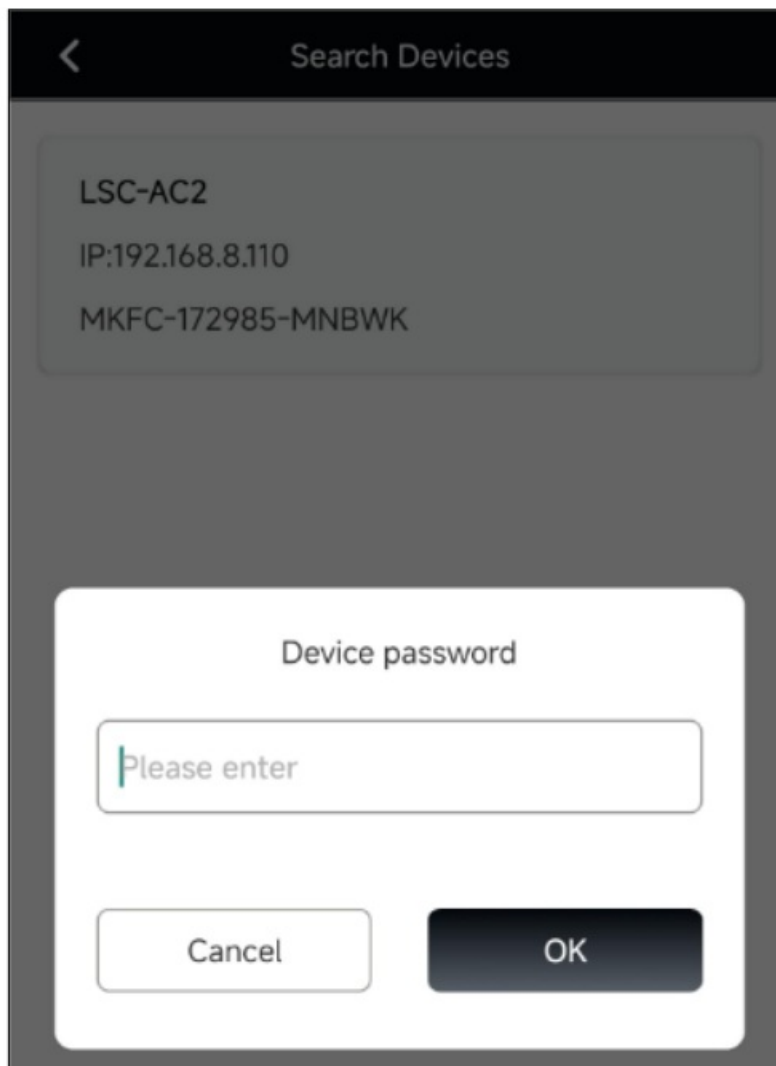
1. After a camera is added through WiFi setting, other phones can add it by searching this camera in LAN. Click “Search in LAN” on Camera Connection page.



2. Go to "Search Devices" page, click the camera information block in list.

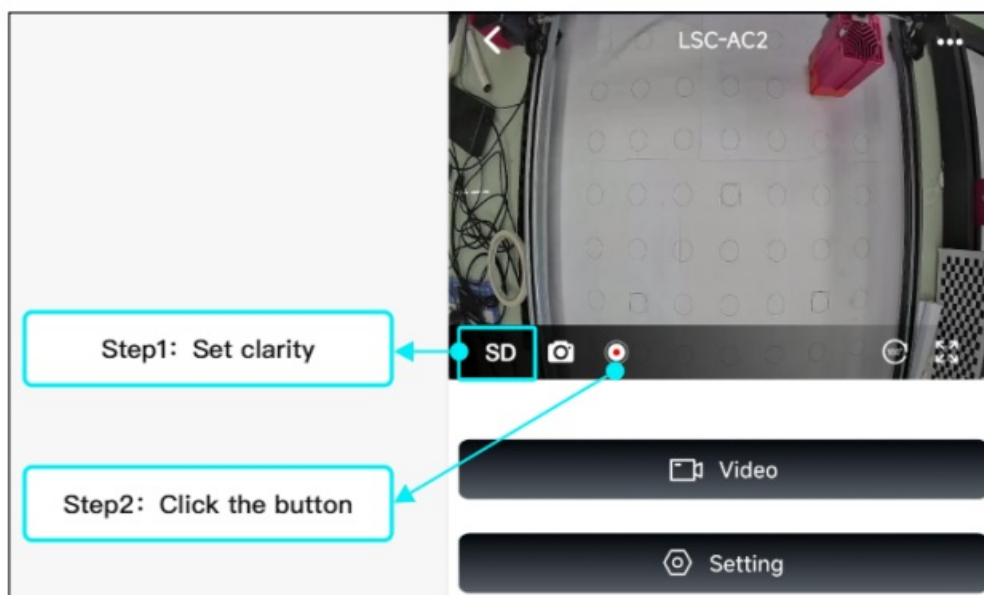


3. The interface will pop up a camera password input box, fill it with correct password (the default password is "admin"), you can complete the camera connection.

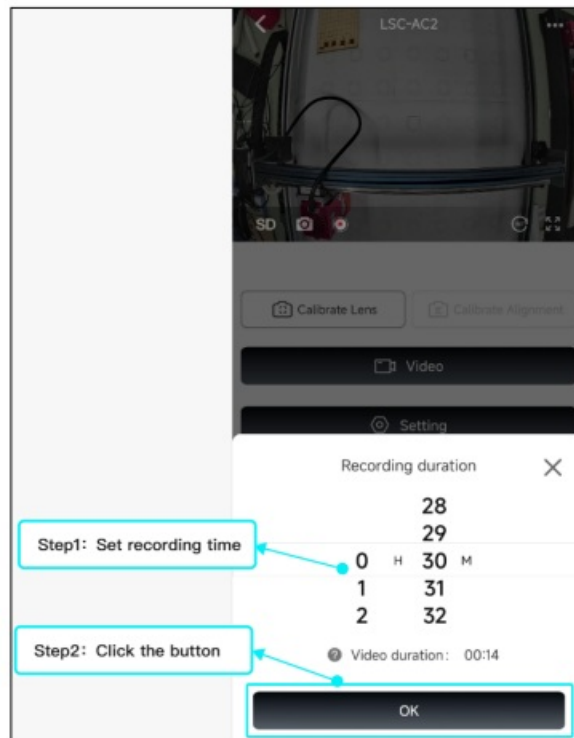


## Video Recording

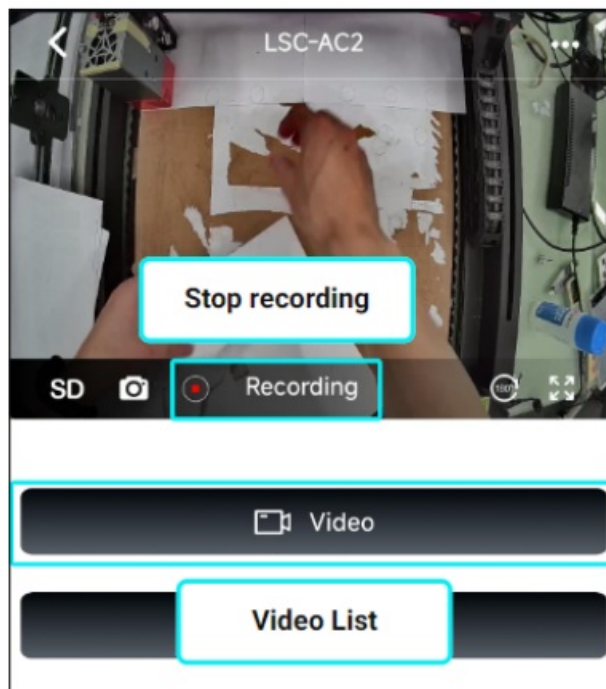
1. On camera homepage, you can switch camera video clarity by clicking the SD/HD button, SD represents standard-definition video and HD represents high-definition video. Click video recording icon on the page to start video recording.



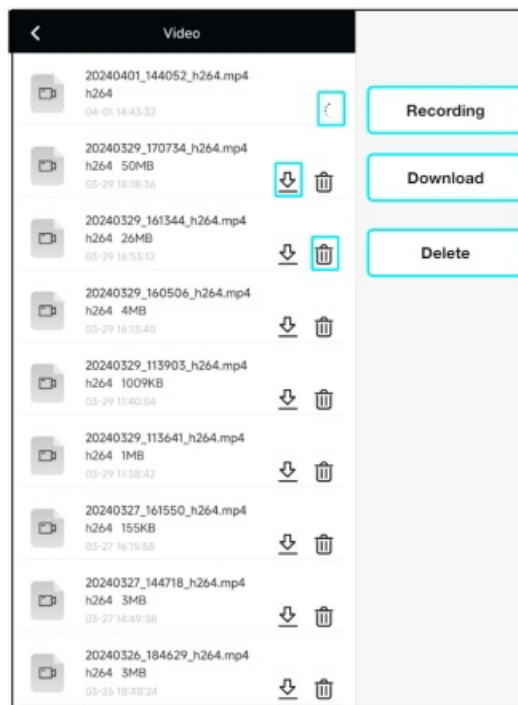
2. Firstly, you can set the duration of this video recording, and clicking "OK" button to finish setting.



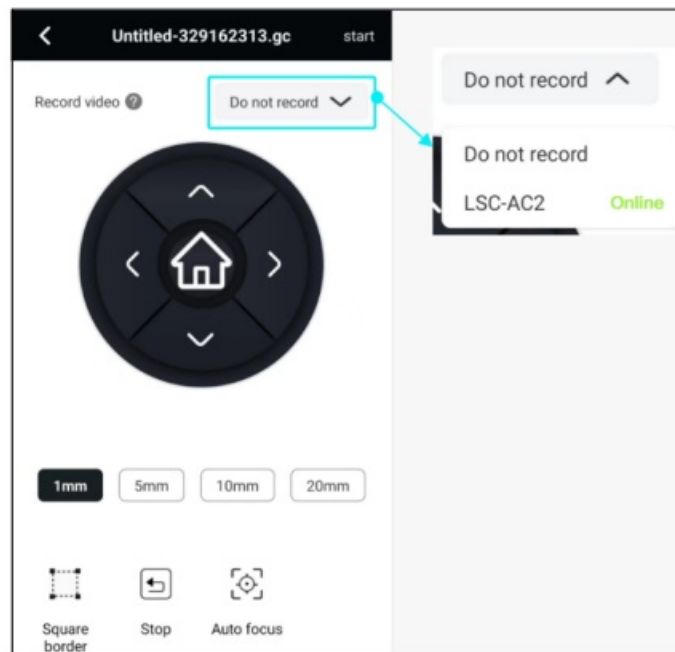
3. You can click the recording icon again to stop current video recording during the recording. Click “Video” button on the page to go to video list if you would like to check the video just recorded.



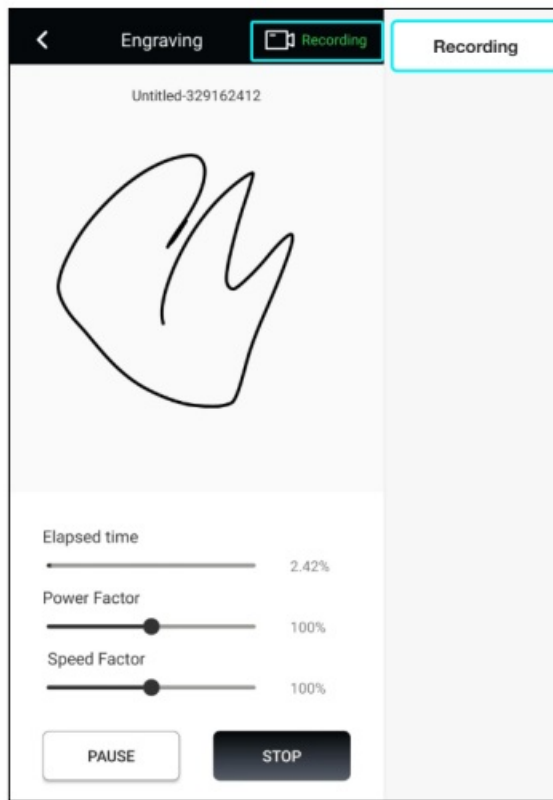
4. You can view all recorded/in progress videos and download/de-lete them in video list.



5. Apart from camera homepage, also you can click “Record video” at top of move page and select the needed camera to record engraving process.

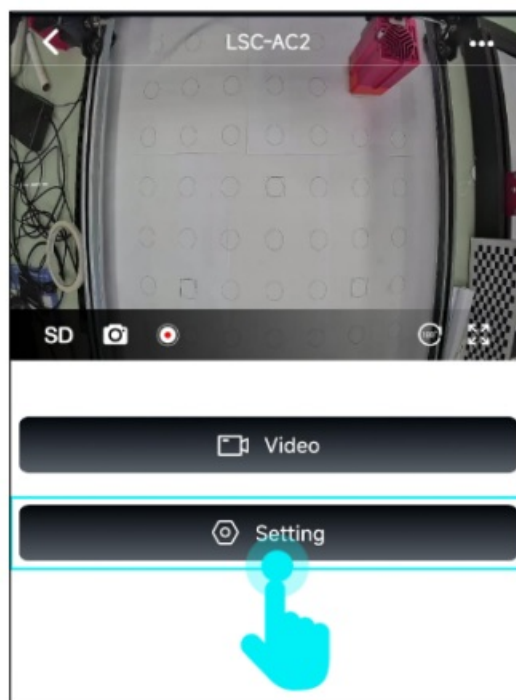


6. Select the camera to start engraving, the camera automatically records the entire carving process until it is completed.



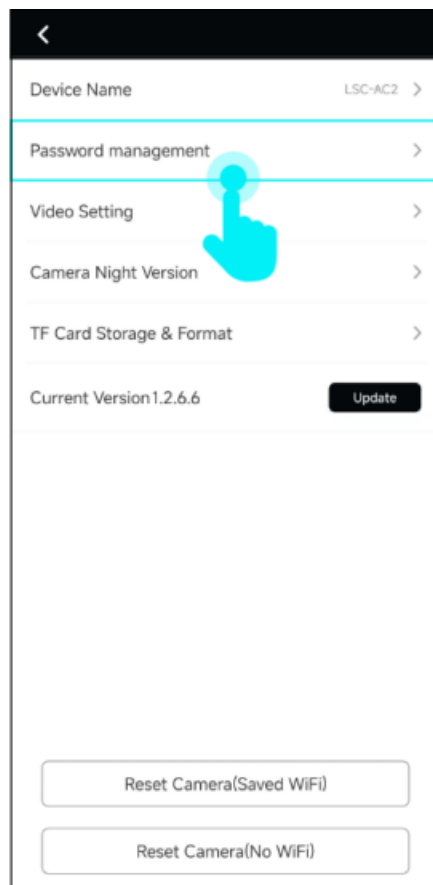
## Change camera password

1. Click "Setting" button on the camera homepage to change password.

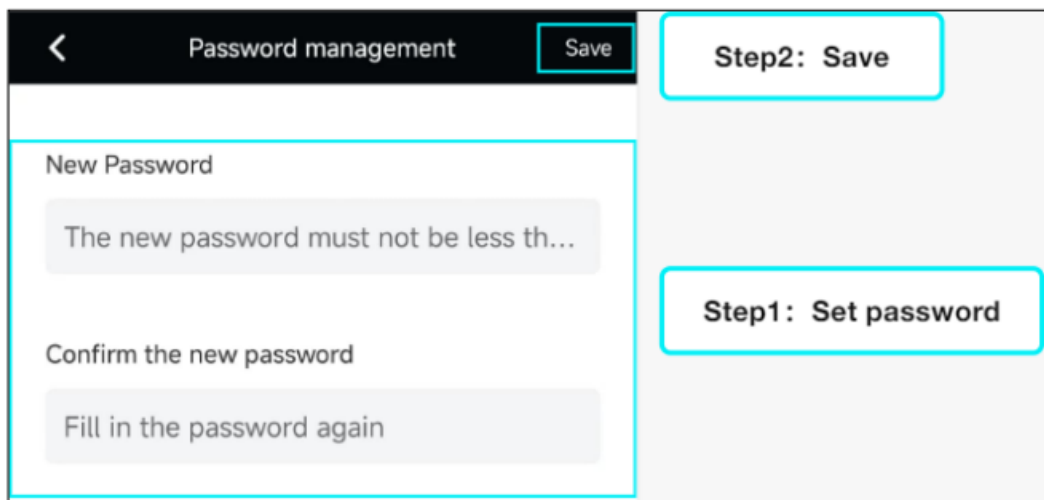


2. Click "Password management" button on page.





3. On password management page, set a new password for camera firstly, then click “Save” button to save the new password.

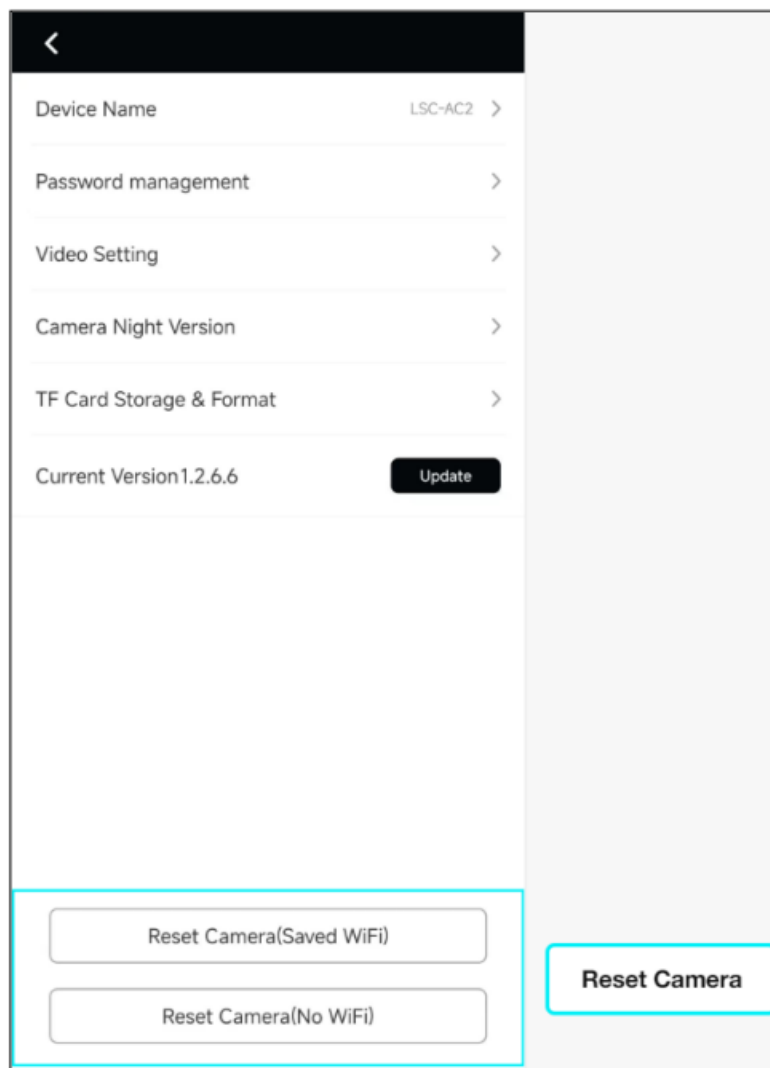


## Camera Reset


You can reset the camera on camera page by selecting “Reset Camera (Saved WiFi)” or “Reset Camera (No WiFi)” options.

**Reset Camera (Saved WiFi):** This option resets the camera but retains the WiFi configuration data. After the camera restarts, the mobile phone can continue to connect to the camera, and the camera settings return to their default values.

**Reset Camera (No WiFi):** This option resets the camera and deletes the WiFi configuration data. After the camera restarts, the mobile phone will need to re-add the camera, and the camera settings will return to their default values.



## Documents / Resources

|   |  |
|---|--|
|  | <a href="#">ATOMSTACK A40 Pro Laser Engraving Machine</a> [pdf] User Manual<br>A40 Pro Laser Engraving Machine, A40 Pro, Laser Engraving Machine, Engraving Machine, Machine |
|---|--|

## References

- [User Manual](#)

[Manuals+](#), [Privacy Policy](#)

This website is an independent publication and is neither affiliated with nor endorsed by any of the trademark owners. The "Bluetooth®" word mark and logos are registered trademarks owned by Bluetooth SIG, Inc. The "Wi-Fi®" word mark and logos are registered trademarks owned by the Wi-Fi Alliance. Any use of these marks on this website does not imply any affiliation with or endorsement.