

ATOLL ELECTRONIQUE AM200 Sig Signature Streamer
Soundlab



ATOLL ELECTRONIQUE AM200 Sig Signature Streamer Soundlab Owner's Manual

[Home](#) » [ATOLL ELECTRONIQUE](#) » ATOLL ELECTRONIQUE AM200 Sig Signature Streamer Soundlab Owner's
Manual 

Contents

- [1 ATOLL ELECTRONIQUE AM200 Sig Signature Streamer
Soundlab](#)
- [2 FAQ](#)
- [3 YOU WILL FIND ENCLOSED](#)
- [4 INFORMATION](#)
- [5 OVERVIEW](#)
- [6 CONNECTINGS](#)
- [7 WARRANTY AND MAINTENANCE](#)
- [8 TECHNICAL DATA](#)
- [9 Documents / Resources](#)
 - [9.1 References](#)
- [10 Related Posts](#)



ATOLL ELECTRONIQUE AM200 Sig Signature Streamer Soundlab



FAQ

Frequently Asked Questions

- **Q:** How do I activate the Trigger function on the amplifier?
 - **A:** To activate the Trigger function, ensure the On/Off button on the amplifier is in the off position (0) while connecting a device with a 12V Trigger outlet to the Trigger input on the amplifier.
- **Q:** What should I do if my amplifier does not power on?
 - **A:** Check the power plug connection, the internal fuse, and ensure the ON/OFF button is in the correct position. If the issue persists, contact customer support.
- **Q:** Can I use the amplifier in Bridge Mono Mode with any speakers?
 - **A:** It is recommended to use compatible speakers when operating the amplifier in Bridge Mono Mode to prevent damage to the equipment.

You have just bought an amplifier with exceptional audiophile performance. We really thank you for your confidence in our products. To get the best part of your amplifier, please read carefully this manual.

YOU WILL FIND ENCLOSED

- A power amplifier AM200 Signature.
- One power lead.
- This manual with the certificate of guarantee.

INFORMATION

CAUTIONS

- Do not make any connections when your device is powered on.
- Put your device in a dry and well-ventilated place, far from a source of heat.
- Avoid putting something on your amplifier.
- Strictly respect polarity + & -, as well as the left and right connections.
- Avoid any short-cut.
- Do not plug-in two speakers in parallel on the same output.

ADVISES

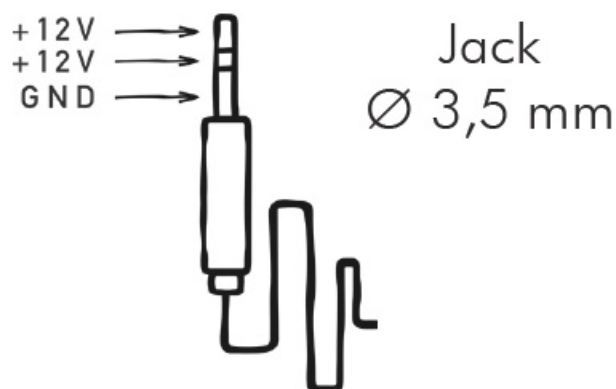
- To optimize the performance of your device, you should switch it on at least half an hour before any listening, the time for the power stage to reach its ideal working temperature.
- Your device will give you optimal listening quality after this timelapse.
- Between two uses, it is, therefore, preferable to let the device on so that it remains at its optimum temperature.
- At night or when you leave your home, it is best to use the main switch to turn off the device.
- To optimize the sound quality of your system, we recommend that you choose good-quality connection cords. Do not hesitate to ask your specialist dealer for advice.
- Your amplifier is equipped with a temporized switch on. A relay protects loudspeakers on the output power stage from over-voltage.

OVERVIEW

CONNECTINGS + TRIGGER



1. Ampli input and output (line).
2. General power plug and ON/OFF button (with internal fuse).
3. Left channel output.
4. Right channel output.
5. 12V Trigger input(1).



1. **Trigger input:** This input allows the control ON/OFF of your amplifier simultaneously to any device with a 12V Trigger outlet. For the system to operate, the On/Off button on your AM200 must remain in the off position (0). If the switch is in the ON position (I), the amplifier will work but not the Trigger function.
2. **Info:** Trigger cable must be a Male to Male stereo jack plug Ø 3,5 mm (1/8").

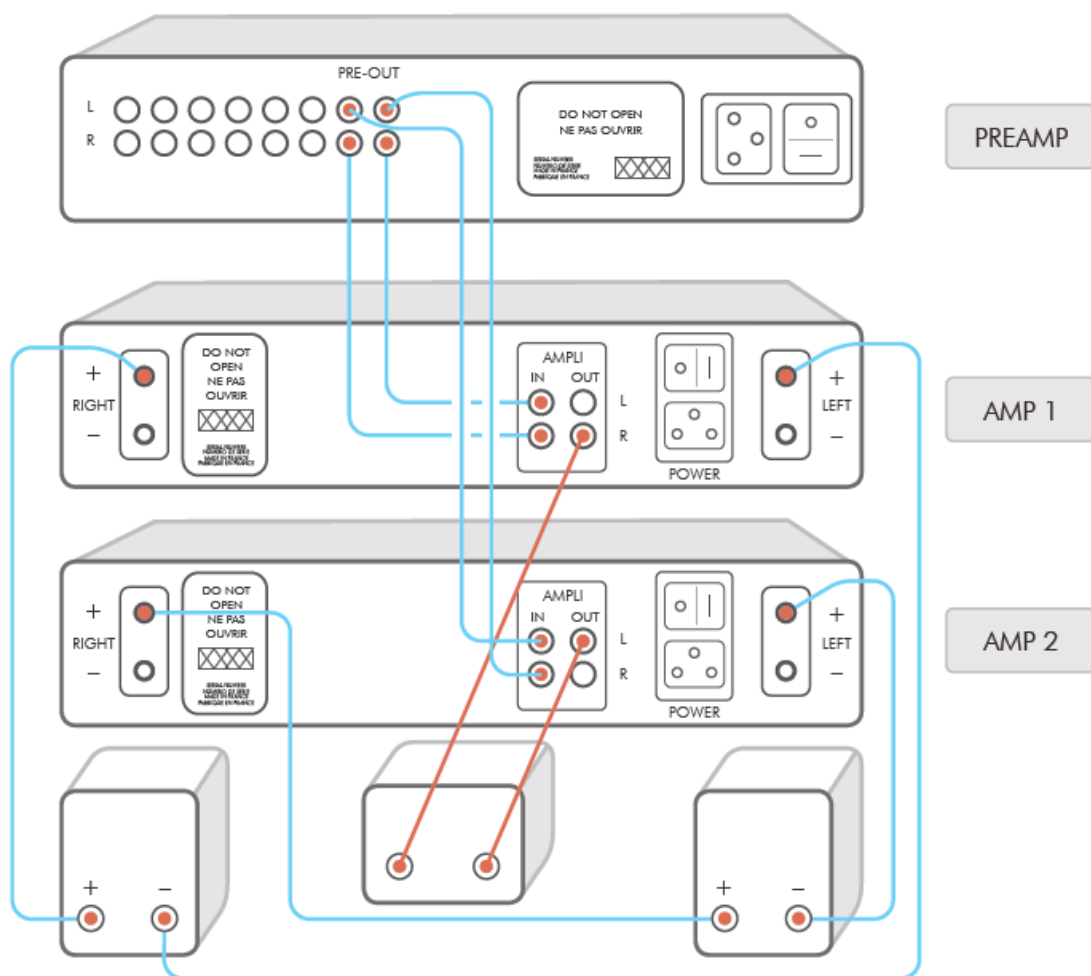
DETAILS OF FUNCTIONS



6. Power indicator led.

CONNECTINGS

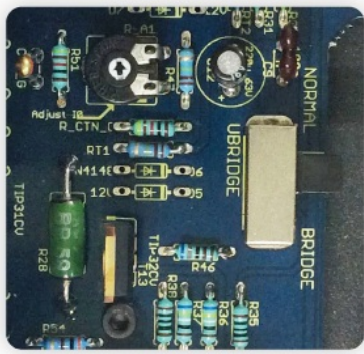
(**Configuration:** 1 Preamplifier & 2 bridged mono amplifier).



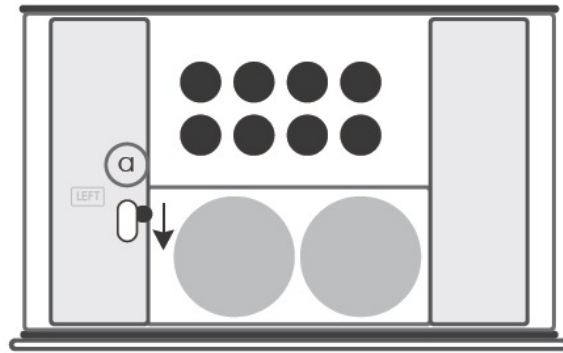
BRIDGE MONO MODE

To transform your Power Amplifier from Stereo to Mono, you have to push the switch a placed inside the appliance as shown below:

Warning: be sure that your amplifier is unplugged and that no other appliance is plug-in during this operation.



a



Internal view

E.C. MARKING

- E.C. marking certified the conformity with low tension directive 73/23/CEE, directive CEM 89/336/CEE, and national transpositions.

WARRANTY AND MAINTENANCE

WARRANTY CONDITIONS

- The guarantee is two years period from the date of purchase.
- We recommend you to ask your dealer to fill the guarantee and to conserve it. The guarantee is only available for appliances that have been used correctly.

WARRANTY FORM ~ MODEL AM200 Sig

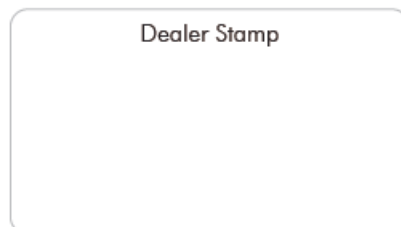
To present to your dealer with the invoice when returning back the appliance:

ATOLL ELECTRONIQUE®

Bd des Merisiers 50370 BRECEY FRANCE

- **Date of purchase:**
- **Place of purchase:**
- **Buyer signature:**

Dealer Stamp



MAINTENANCE

- Before any cleaning, switch off your device. Use a soft and dry rag to clean up the appliance.
- Never use acetone, white-spirit, ammoniac, or any kind of product containing an abrasive agent. Never try to clean up inside the appliance.

TECHNICAL DATA

- **Power Wrms/ch./8Ω (230v):** 120 W
- **Power Wrms/ch./4Ω (230v):** 200 W
- **Impulse power Wrms/ch.:** 300 W
- **Power supply:** 2×340 VA
- **Total of capacitors:** 57 280 μF
- **Number of inputs:** 2
- **Switch OFF consumption:** 0 W
- **ON consumption:** 20 W – 600 W
- **Input impedance:** 220 kΩ
- **Sensitivity:** 1,77 V
- **Signal/Noise ratio:** 100 dB
- **Distortion at 1 kHz:** 0,05%
- **Frequency response:** 5 Hz – 100 kHz
- **Rising time:** 1,5 μs
- **Dimensions:** 440×295×95 mm
- **Weight:** 12 Kg

ATOLL ELECTRONIQUE® is a French brand that designs, manufactures and markets all of its products.

www.atoll-electronique.com

Documents / Resources



[ATOLL ELECTRONIQUE AM200 Sig Signature Streamer Soundlab](#) [pdf] Owner's Manual
AM200 Sig Signature Streamer Soundlab, AM200 Sig, Signature Streamer Soundlab, Streamer Soundlab, Soundlab

References

- [User Manual](#)

[Manuals+](#), [Privacy Policy](#)

This website is an independent publication and is neither affiliated with nor endorsed by any of the trademark owners. The "Bluetooth®" word mark and logos are registered trademarks owned by Bluetooth SIG, Inc. The "Wi-Fi®" word mark and logos are registered trademarks owned by the Wi-Fi Alliance. Any use of these marks on this website does not imply any affiliation with or endorsement.