



# ATMS1602 WiFi Smart Timer and Energy Monitor Instruction Manual

[Home](#) » [ATMS](#) » ATMS1602 WiFi Smart Timer and Energy Monitor Instruction Manual 



## WiFi Smart Timer & Energy Monitor Operating Instructions

### Contents

- [1 Download and Install Mobile App:](#)
- [2 Register Account](#)
- [3 Add New Device](#)
- [4 Count down timer](#)
- [5 Meter Function](#)
- [6 Share Device](#)
- [7 Create Group](#)
- [8 Specification](#)
- [9 Connection Diagrams](#)
- [10 Documents / Resources](#)
  - [10.1 References](#)

### Download and Install Mobile App:

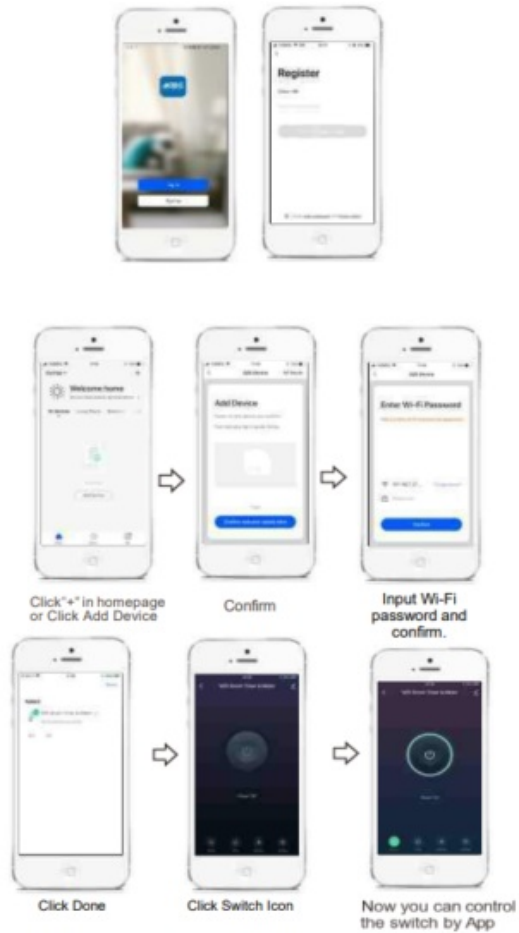
Connect your phone to local Wi-Fi first.

Use your phone to scan the QR code below to Download and install the App.



<https://a.smart321.com/acdcsmartundefined>

## Register Account

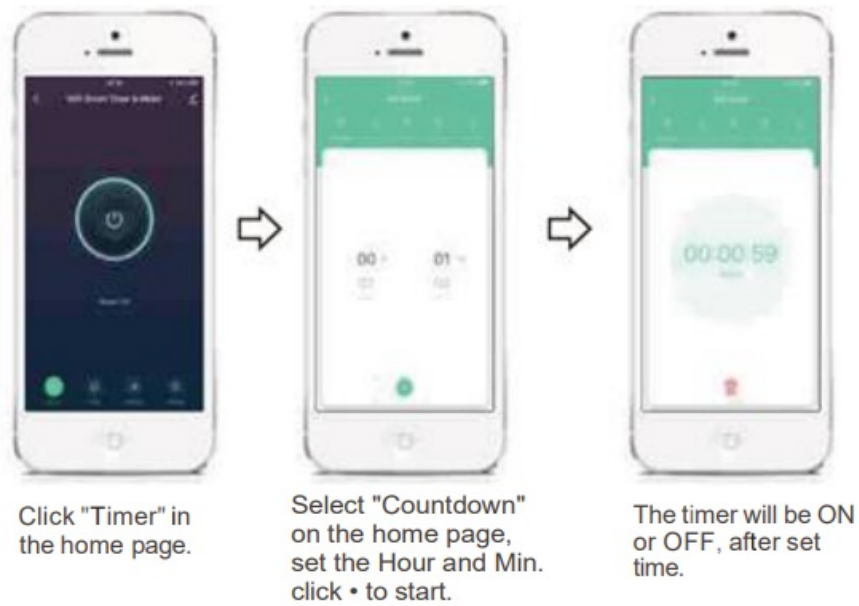


## Add New Device

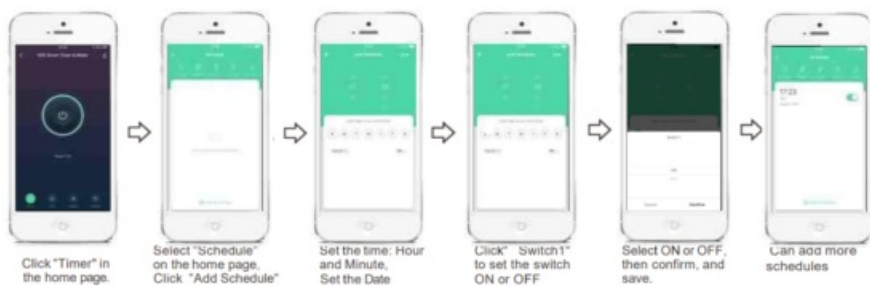
Connect the Device with the mains supply (100-250VAC), for the connection diagrams see section 4. Press and hold the button for about 5 seconds until the Red Led blinks fast.



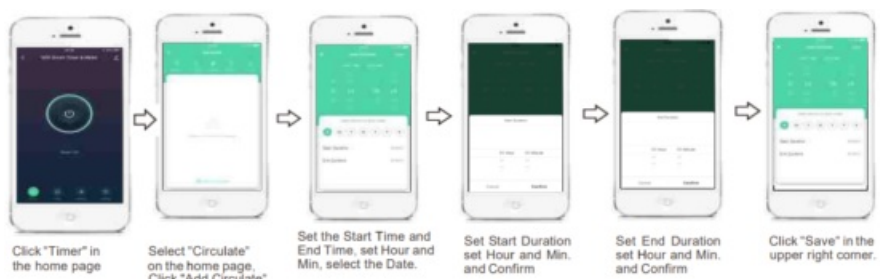
## Count down timer



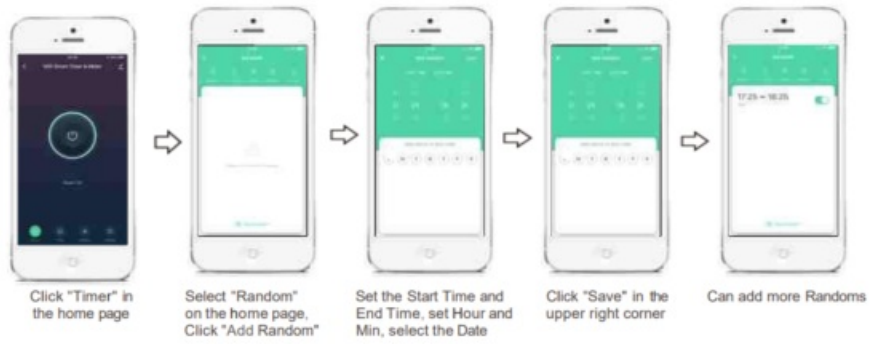
## Set scheduled programs.



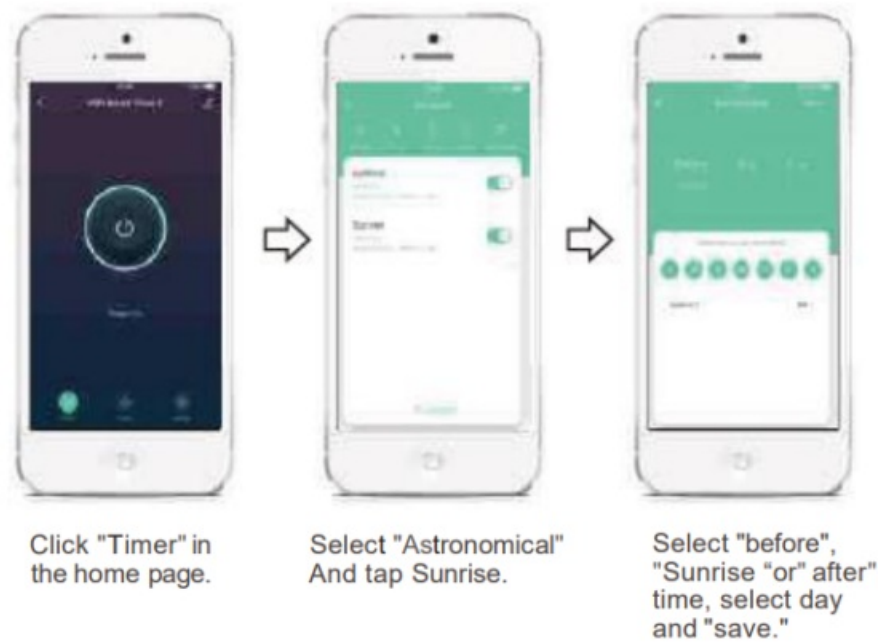
## Circulate Function



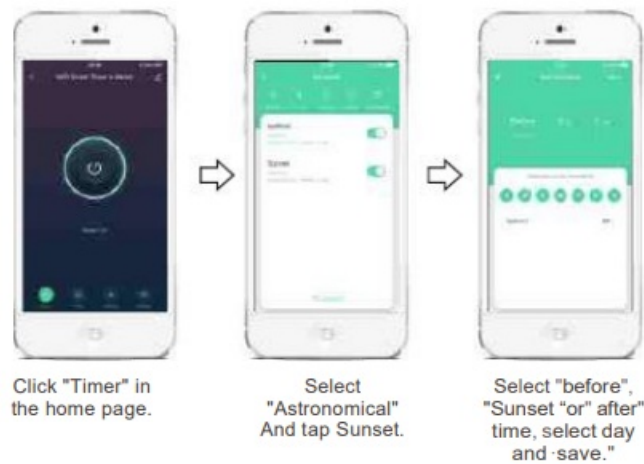
## Random Function



## Astronomical Function set Sunrise time



## Astronomical Function set Sunset time



## Meter Function



Click "Electric" in the home page

The App can display:

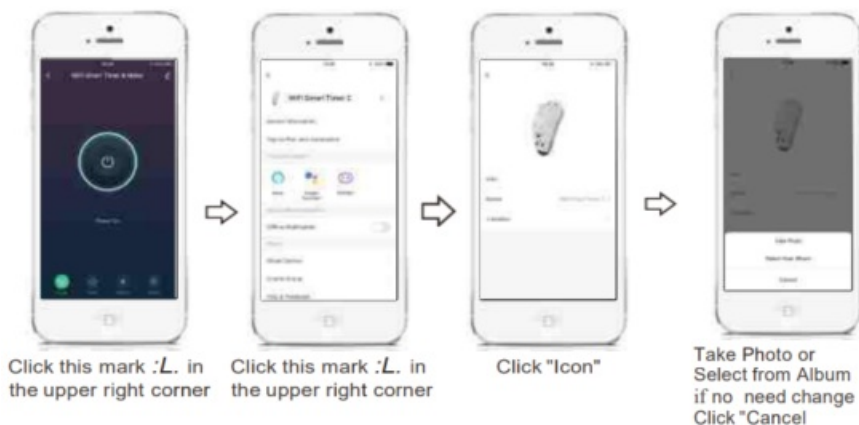
Power (W), Current (mA), Voltage (V), Daily Consumption:(KWh)

Monthly Consumption:(KWh)

Total Consumption:(KWh),

When the measured power is less than 3 W, the App displays Power(W) and Current (mA) as both "0", but as the consumption accumulates the meter will account and measure.

### Modify Device Icon



### Modify Device Name



## Share Device



## Create Group

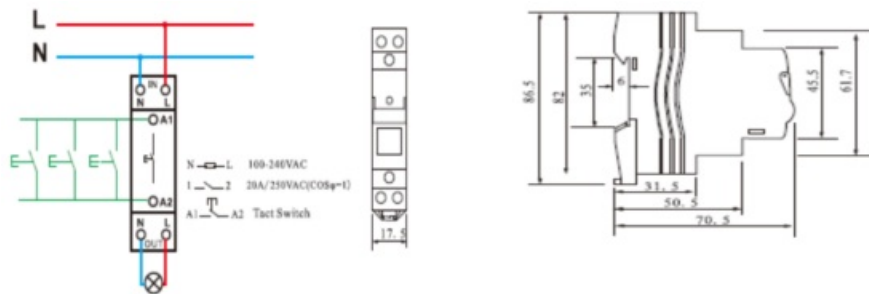


## Specification

- Rated Voltage: 100-240VAC 50-60HZ.
- Rated Current: 20A 250VAC(Cos(j) 1)
- Contact Configuration: 1NO(SPST-NO)
- Wi-Fi Frequency: 2.4GHZ
- Mounting: DIN RAIL 35 mm (EN60715)
- Ambient temperature range: ( -10°C to 60°C)
- Can set 30 ON/OFF programs per day or per week.
- Countdown time, from 1 Min to 23 hours 59 Mins.

- If the product is disconnected from the network, the timer retains all programs set up by Mobile App and works according to the set programs.
- With memory function, When the product contact is in the close state, after a power failure the product contacts keeps the closed state.
- Also, can be controlled by tactile switch from terminal A1 and A2
- Can be shared with 20 users by Mobile App.
- Limit current 20A, if load exceeds 22A, the product will automatically disconnect load circuit.
- With Bluetooth function, when the WIFI signal is disconnected for 5 minutes, you can use the mobile APP to control the on and off of the product through Bluetooth.

## Connection Diagrams



## Documents / Resources



[ATMS ATMS1602 WiFi Smart Timer and Energy Monitor](#) [pdf] Instruction Manual  
 ATMS2002, ATMS1602, ATMS1602 WiFi Smart Timer and Energy Monitor, ATMS1602, WiFi Smart Timer and Energy Monitor, Timer and Energy Monitor, Energy Monitor

## References

- [User Manual](#)

[Manuals+](#). [Privacy Policy](#)

This website is an independent publication and is neither affiliated with nor endorsed by any of the trademark owners. The "Bluetooth®" word mark and logos are registered trademarks owned by Bluetooth SIG, Inc. The "Wi-Fi®" word mark and logos are registered trademarks owned by the Wi-Fi Alliance. Any use of these marks on this website does not imply any affiliation with or endorsement.